

PROFILE
 Scale: Horiz. 1"=40'
 Vert. 1"=5'

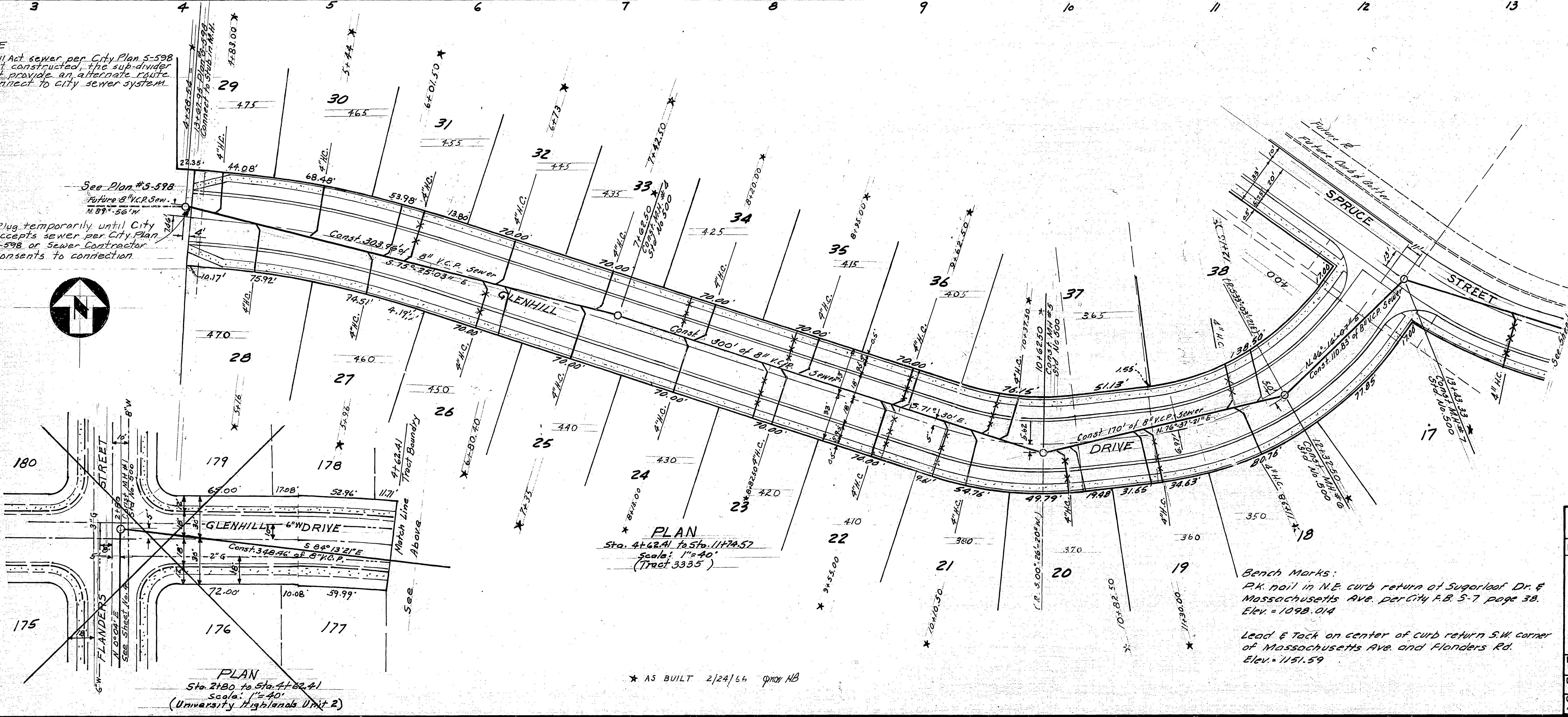
NOTE
 If 1911 Act sewer per City Plan 5-598 is not constructed, the sub-divider must provide an alternate route to connect to city sewer system.

See Plan #5-598
 Future 8" V.C.P. Sewer
 11.87' x 56" W

Plug temporarily until City accepts sewer per City Plan 5-598 or Sewer Contractor consents to connection.

GENERAL NOTES

1. Construction shall be in accordance with the City of Riverside Department of Public Works, Std. Specifications No. 461 and Standard Drawings.
2. It shall be the responsibility of the contractor to clear the right of way in accordance with the provisions of the law as it affects each utility including irrigation lines and appurtenances, and at no cost to the City.
3. Joints in vitrified clay pipe sewers shall conform to A.S.T.M. Std. C-425-60T, or the latest revision thereof.
4. Pipe shall be bedded per Case I, Std. Dwg. No. 452, unless otherwise specified on plan.
5. Location of wyes and laterals to be determined in field.
6. All stubs and laterals to be constructed in accordance with Std. Dwg. 14562. Stubs shall be plugged & capped.



PLAN
 Sta. 4+62.41 to Sta. 11+78.57
 Scale: 1"=40'
 (Tract 3335)

Bench Marks:
 P.K. nail in N.E. curb return at Superloop Dr. & Massachusetts Ave. per City P.B. 5-7 page 38. Elev. = 1098.014

Lead & Tack on center of curb return S.W. corner of Massachusetts Ave. and Flanders Rd. Elev. = 1151.59

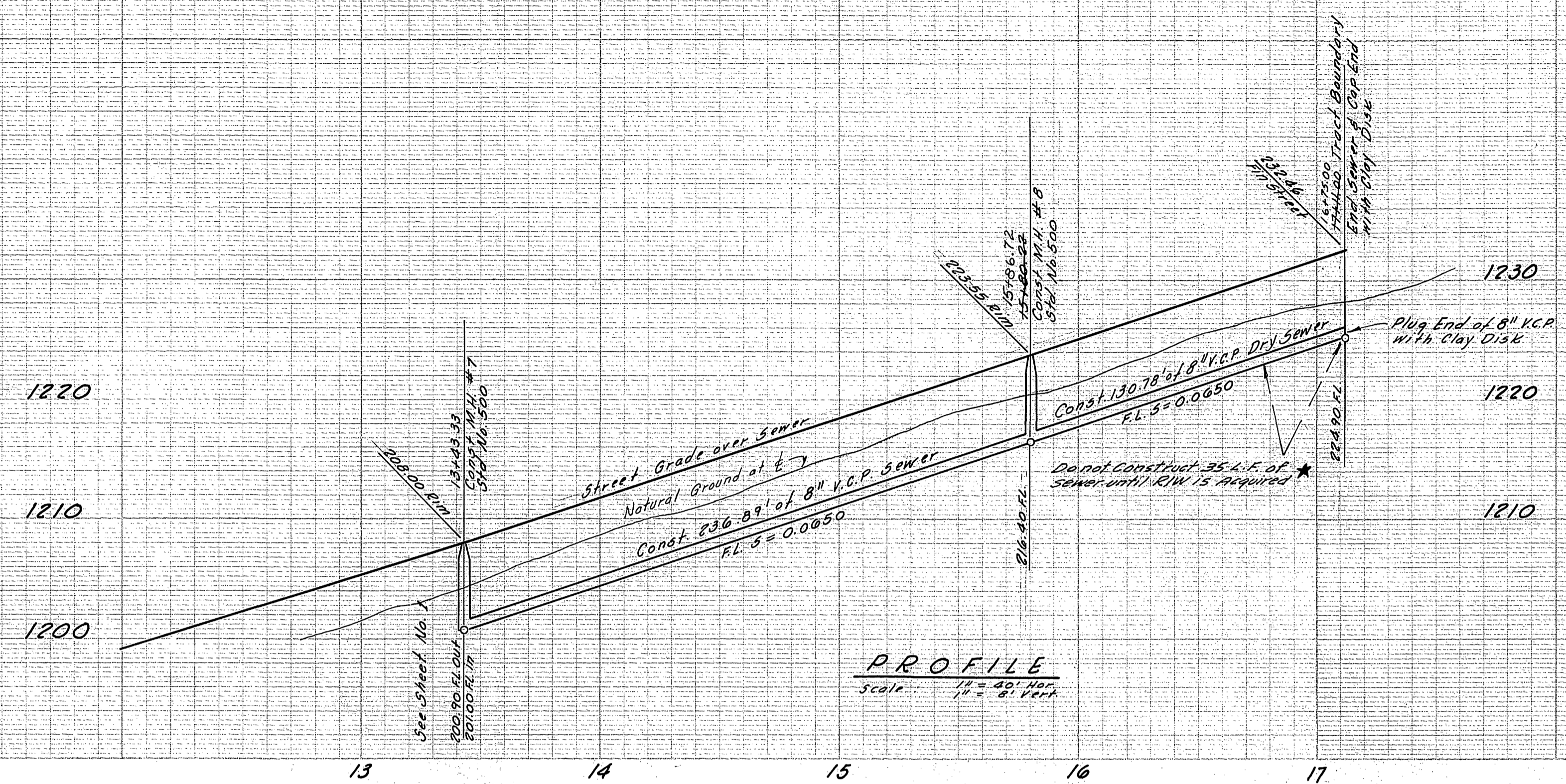
* AS BUILT 2/24/66 gpony AB

CRAWLEY & HAWKINS
 SURVEYORS AND ENGINEERS
 Riverside, California

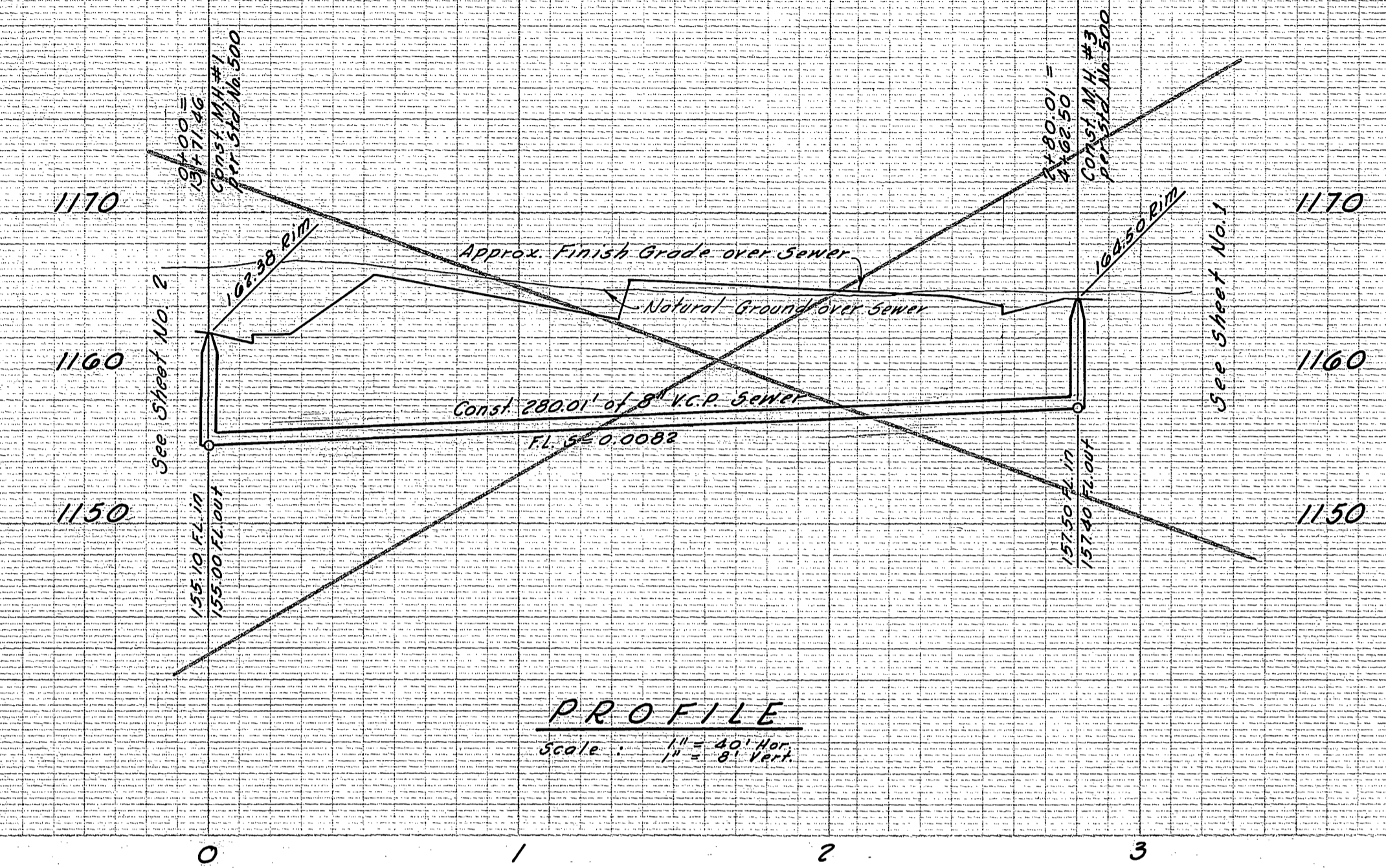
Approved: *George O. Crawley* Field Eng.
 Date: 5-1-65
 C.R.E. No. 9455 12-158

| REVISIONS | | |
|-----------|------|-------------|
| MARK | DATE | DESCRIPTION |
| | | |
| | | |
| | | |

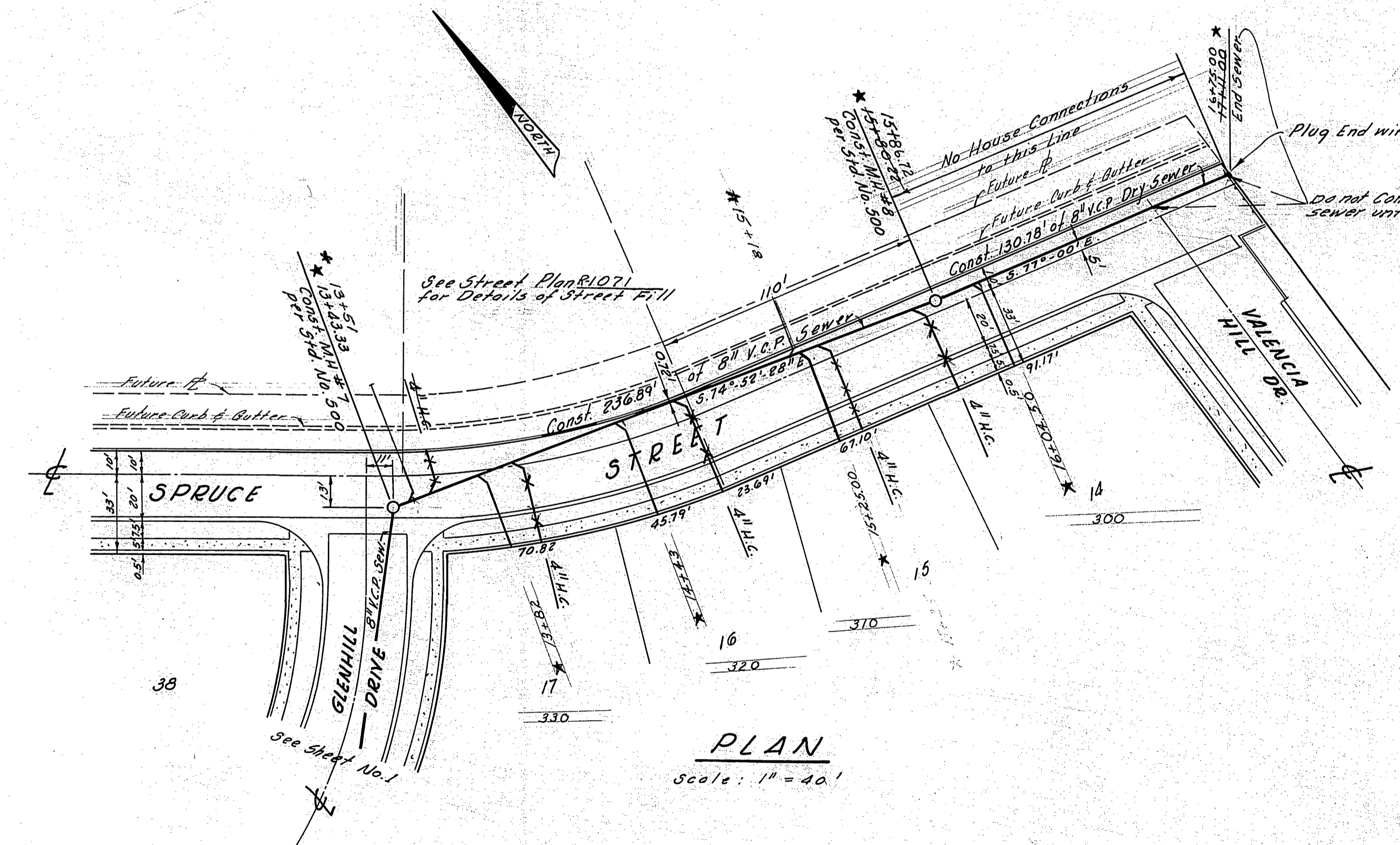
| | |
|---|---|
| CITY OF RIVERSIDE, CALIFORNIA DEPARTMENT OF PUBLIC WORKS | |
| SEWER PLAN AND PROFILE | |
| TRACT NO. 3335 | |
| GLENHILL DRIVE | |
| Sta. 4+62.41 to Sta. 11+78.57 | |
| DESIGNED BY <i>LDH</i> | SUBMITTED BY <i>LDH</i> |
| DRAWN BY <i>LDH</i> | APPROVED BY <i>George O. Crawley</i> DIRECTOR OF PUBLIC WORKS |
| CHECKED BY <i>G.S. Hawkins</i> | RECOMMENDED BY <i>LDH</i> |
| DATE 5-1-65 | PROJ. NO. 5-642 |
| | SHEET 1 OF 3 |



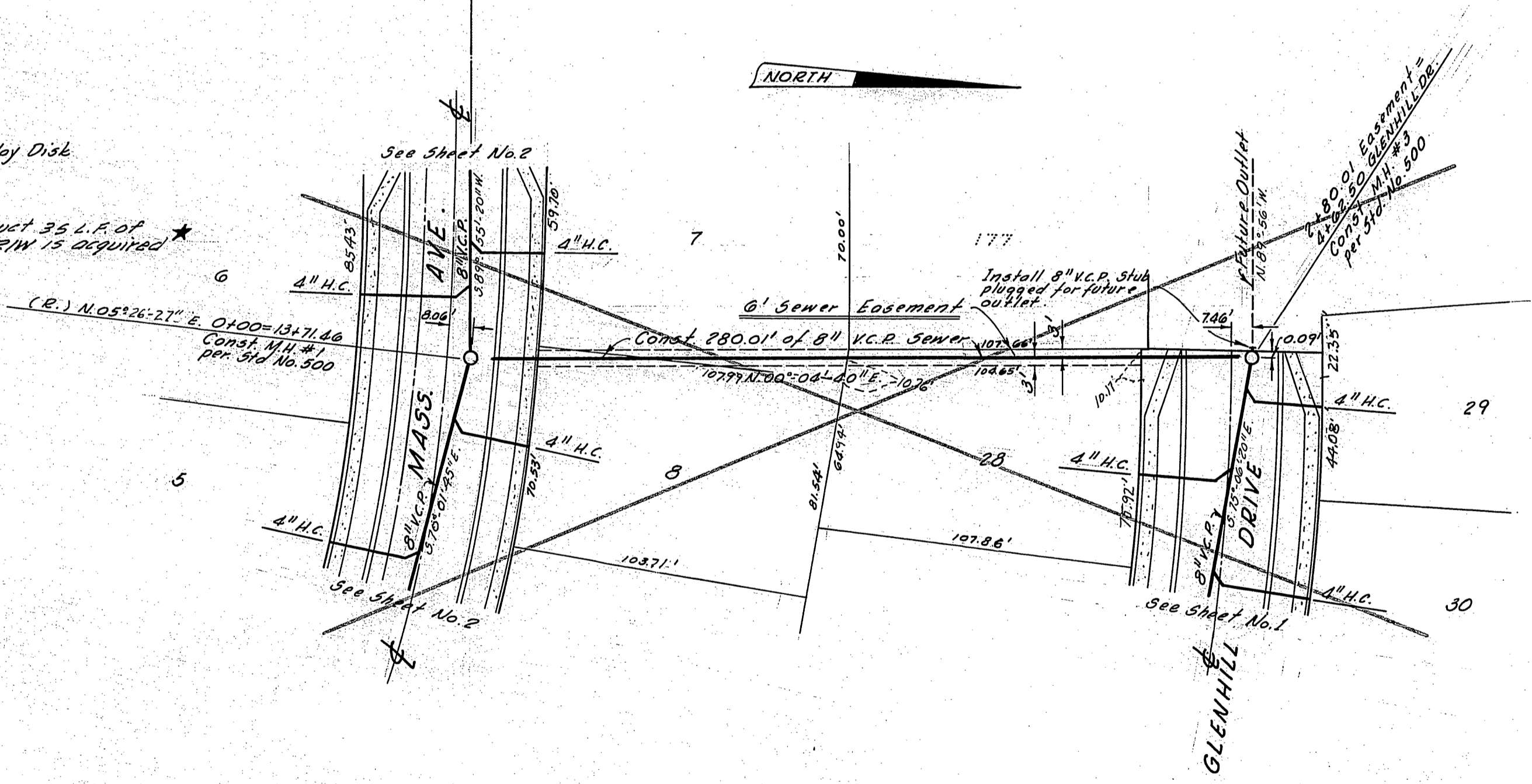
PROFILE
Scale: 1" = 40' Vert.



PROFILE
Scale: 1" = 40' Vert.



PLAN
Scale: 1" = 40'



PLAN
Scale: 1" = 40'

Branch Marks:
 * 1/2" nail in NE curb return of Sugarloaf Dr. & Massachusetts Ave. per City Ed. 5.1, page 30. Elev. = 1098.014.
 * Lead & Tack on center of curb return SW corner of Massachusetts Ave. and Flanders Rd. Elev. = 1151.59.

* AS BUILT 2/24/66 JMW:MB

| | | | | |
|---|--|---|--|---|
| CRAWLEY & HAWKINS SURVEYORS AND ENGINEERS Riverside, California Approved: <i>George O. Crawley</i> Field Bk. 65 Date: 5-7-65 R.E. No. 9453 | CITY OF RIVERSIDE, CALIFORNIA DEPARTMENT OF PUBLIC WORKS | | SEWER PLAN & PROFILE TRACT NO. 3335 SPRUCE STREET Sta. 13+43.33 to Sta. 17+11.00 EASEMENT Sta. 0+00 to Sta. 2+80-01 | PROJECT NO. 3-642 |
| | DESIGNED BY LCM DRAWN BY LH CHECKED BY BGS | APPROVED BY: <i>[Signature]</i> OFFICE ENGINEER: <i>[Signature]</i> PARK DEPARTMENT: <i>[Signature]</i> TRAFFIC DIVISION: <i>[Signature]</i> ASSISTANT CITY ENG. <i>[Signature]</i> | | APPROVED BY: <i>[Signature]</i> DIRECTOR OF PUBLIC WORKS |
| V.O. 158 | | DATE: 10-4-66 | HORIZ. SCALE: 1" = 40' VERT. SCALE: 1" = 8' | FILE NO. |