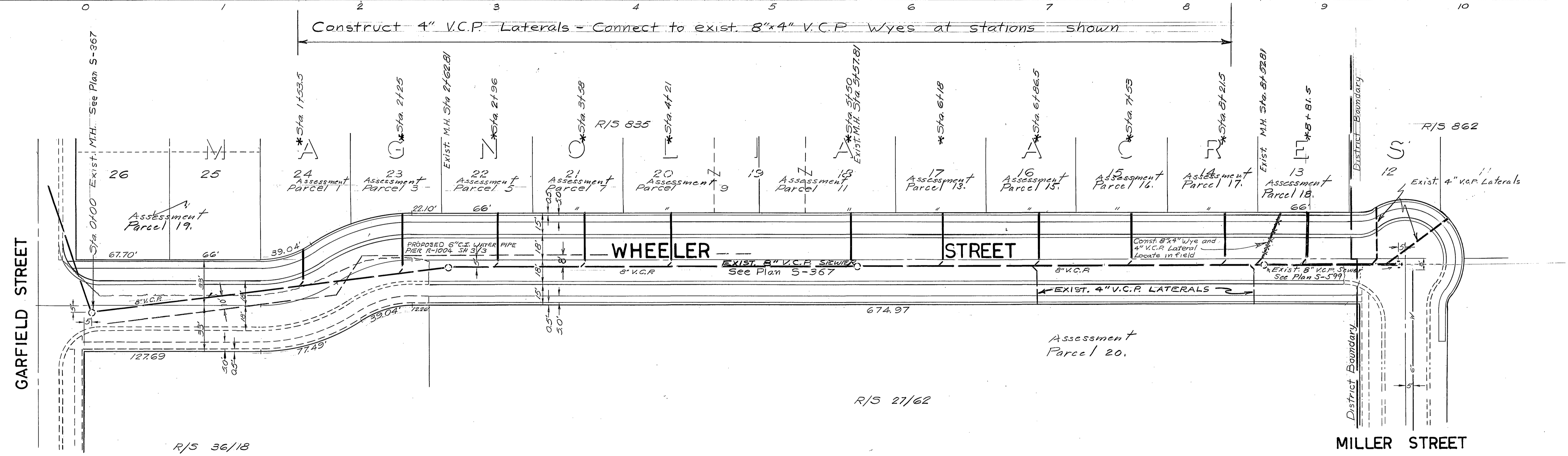


Scale:  
Horizontal 1"=40'  
Vertical 1"=4'

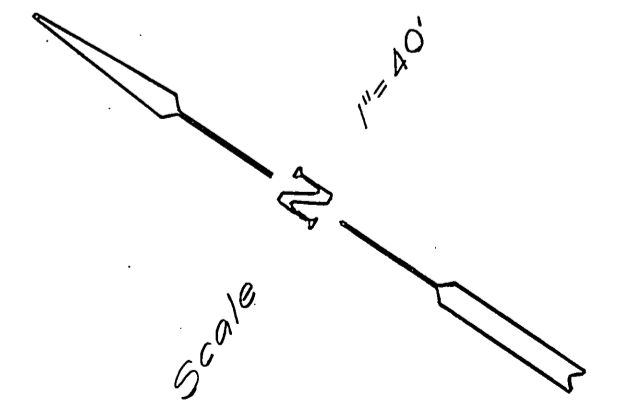
B.M. Elev. 756.51  
P.K. nail in curb 1' east of east  
end of curb return N.E. cor.  
of Sherman Dr. and Garfield St.



R/S 36/18

R/S 27/62

\* AS BUILT 9.25.67



CITY OF RIVERSIDE, CALIFORNIA DEPARTMENT OF PUBLIC WORKS				WHEELER STREET IMPROVEMENT DISTRICT		ACC. NO. 6056
APPROVED BY OFFICE ENGINEER PARK DEPARTMENT TRAFFIC DIVISION ASSISTANT CITY ENG.				APPROVED BY <i>[Signature]</i> DIRECTOR OF PUBLIC WORKS		PROJECT NO.  S-646
DESIGNED BY RRS DRAWN BY J.C. CHECKED BY R.M.				DATE 2-14-67		SHEET 1 OF 1
				HORIZ. SCALE: 1" = 40'		FILE NO.