

Note: Begin sewer const. at sta. 3490.00
 Other sewers shown are existing
 per Riv City Plan No. 5-521.
 Laterals to be located in the field.

* AS BUILT 1-22-67 M.E.S.

Bench Mark: Top of 4" I.P. filled with Conc.
 at South West Corner of Sec. 31
 Elevation 1138.41

GENERAL NOTES

1. Construction shall be in accordance with the City of Riverside, Department of Public Works, Standard Specifications No. 461 and Standard Drawings.
2. It shall be the responsibility of the contractor to clear the right of way in accordance with the provisions of the law as it affects each utility including irrigation lines and appurtenances and at no cost to the City.
3. Joints in vitrified clay pipe sewers shall conform to ASTM Standard C-425-60T, or the latest revision thereof.
4. Pipe shall be bedded per Case I, Standard Drawing No. 452, unless otherwise specified on plan.
5. Location of wyes and laterals to be determined in the field.
6. All stubs and laterals to be constructed in accordance with Standard Drawing No. 562. Stubs shall be plugged and capped.

REVISIONS		
MARK	DATE	DESCRIPTION
(PENTAGON SHEET)	4/1/66	MANHOLES RECONSTRUCTED & GRADES CHANGED THROUGHOUT. SEE M.D. RECORDS & TRACING 8065 APPROVED

F.B. 865-53 853-23 837-53 & 56

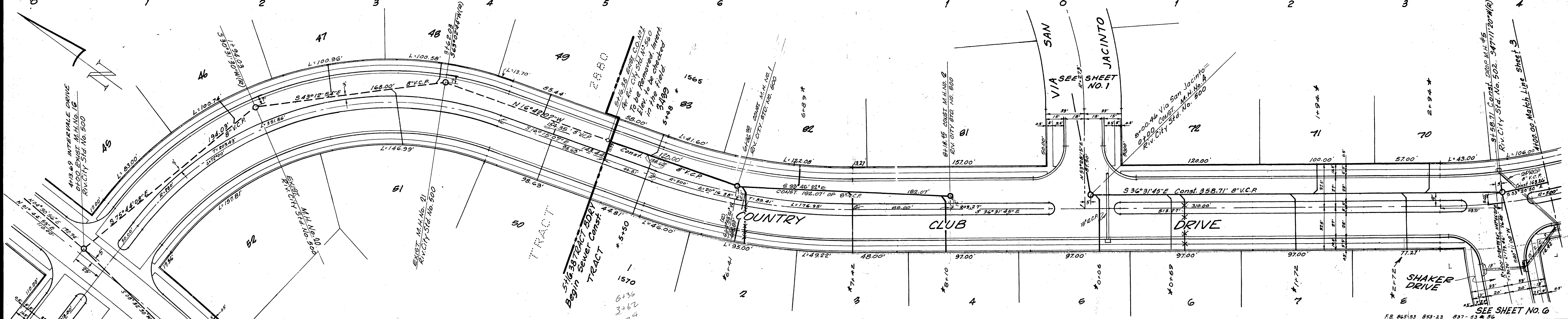
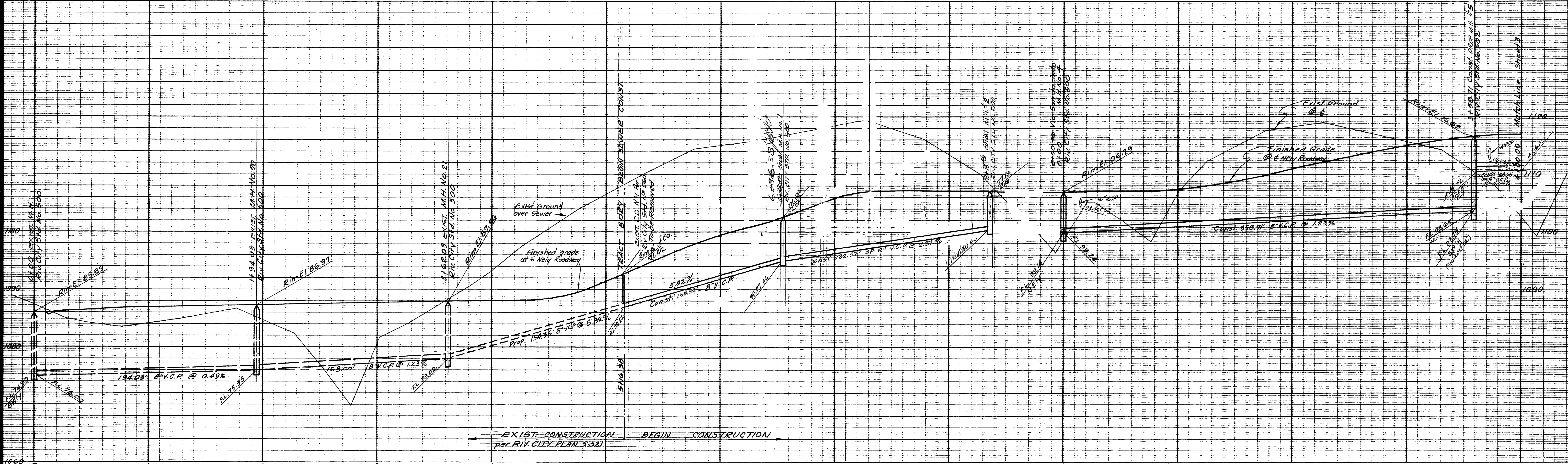
J. F. DAVIDSON-CIVIL ENGINEER
 R.E. NO. 862
 RIVERSIDE, CALIFORNIA
 APPROVED BY *J.F. Davidson* DATE 11/18/64

CITY OF RIVERSIDE, CALIFORNIA
DEPARTMENT OF PUBLIC WORKS

Sewer PLAN & PROFILE
TRACT 3499
VIA SAN JACINTO 5/6 VIA VALLARTA
 Sta. 3+49.06 to Sta. 8+00.06

HORIZ. SCALE 1"=40' VERT. SCALE 1"=8'

DESIGNED BY	CHECKED BY <i>B.H.S.</i>	APPROVED BY <i>J.F. Davidson</i>
DRAWN BY	DATE 6/65	NO. 5-648
RECOMMENDED BY	ASSISTANT CITY ENGINEER	SHEET 1 OF 9



NOTE: Begin sewer const. at sta. 5+12.39
 Other sewer shown is EXIST. per RIV.
 City Plan No. 5-521.
 Laterals to be located in the field.

* AS BUILT 1-24-67 ABC:RF

Bench Mark: Top of 4" I.P. filled with Conc.
 at South West Corner of Sec. 31
 Elevation 1138.41

REVISIONS	
MARK	DATE
(ENTIRE SHEET)	4/1/66
MANHOLES RENUMBERED & GRADES CHANGED THROUGHOUT	
BY W.D. Davidson 4/20/66	
APPROVED	
Hans	

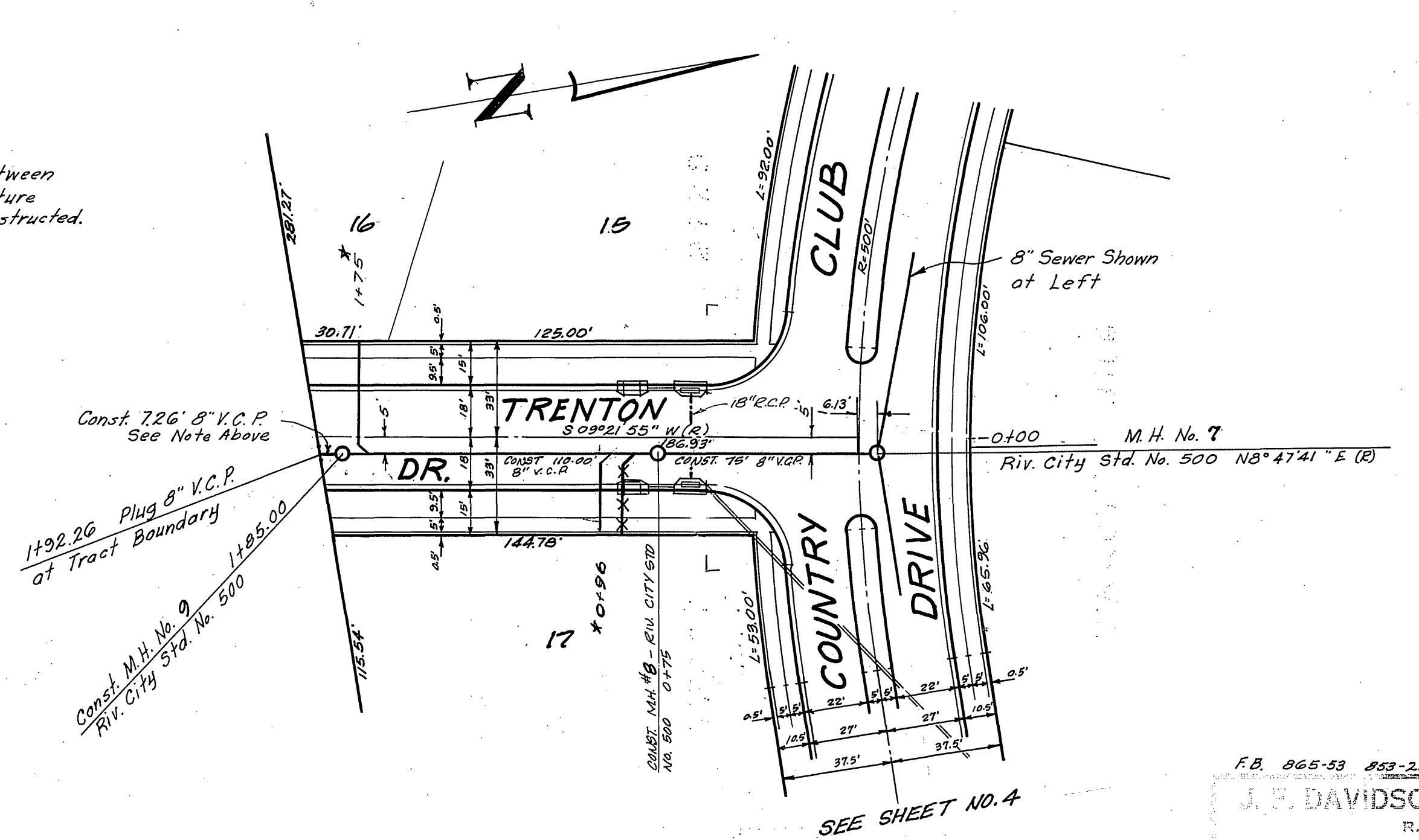
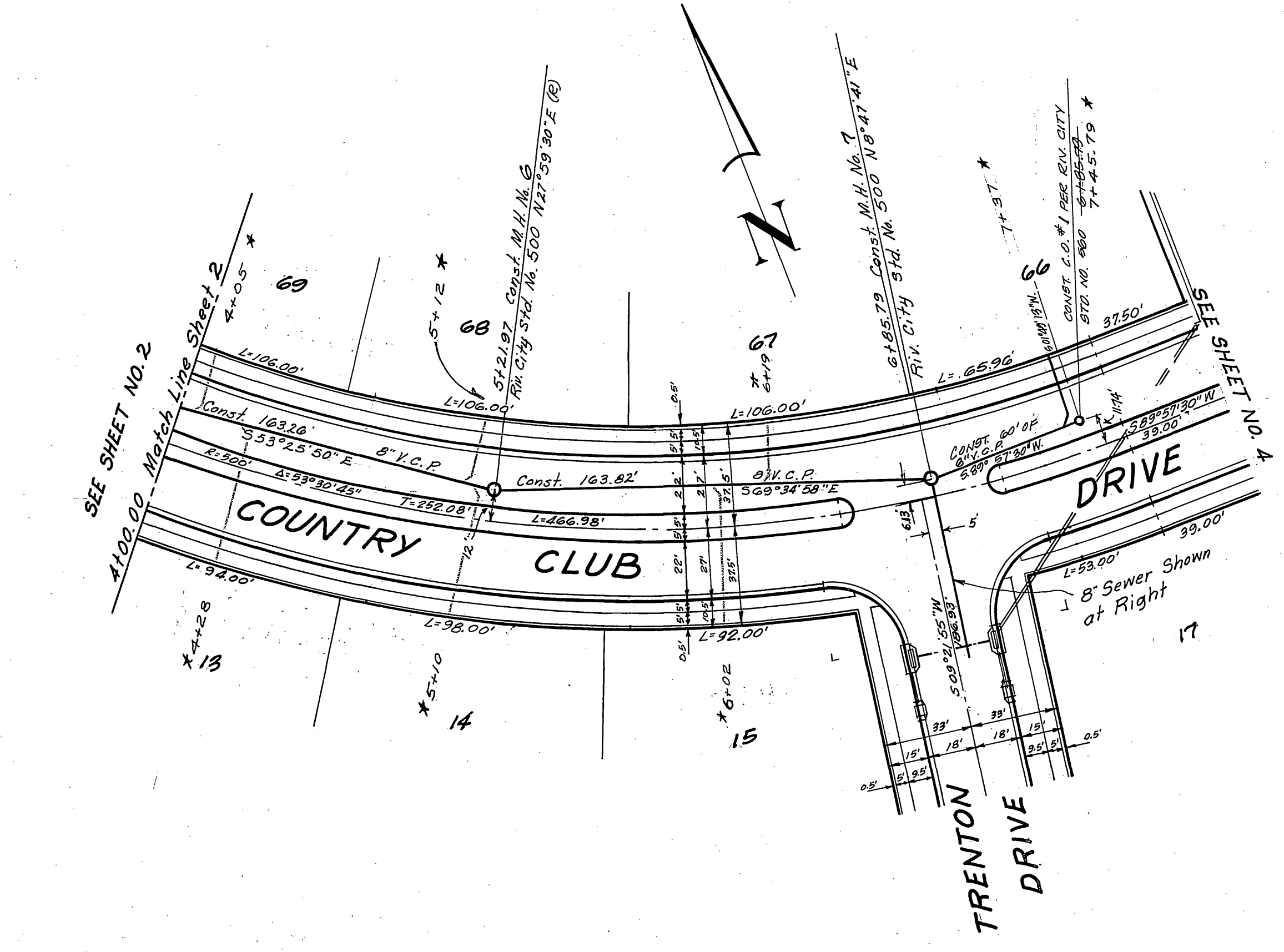
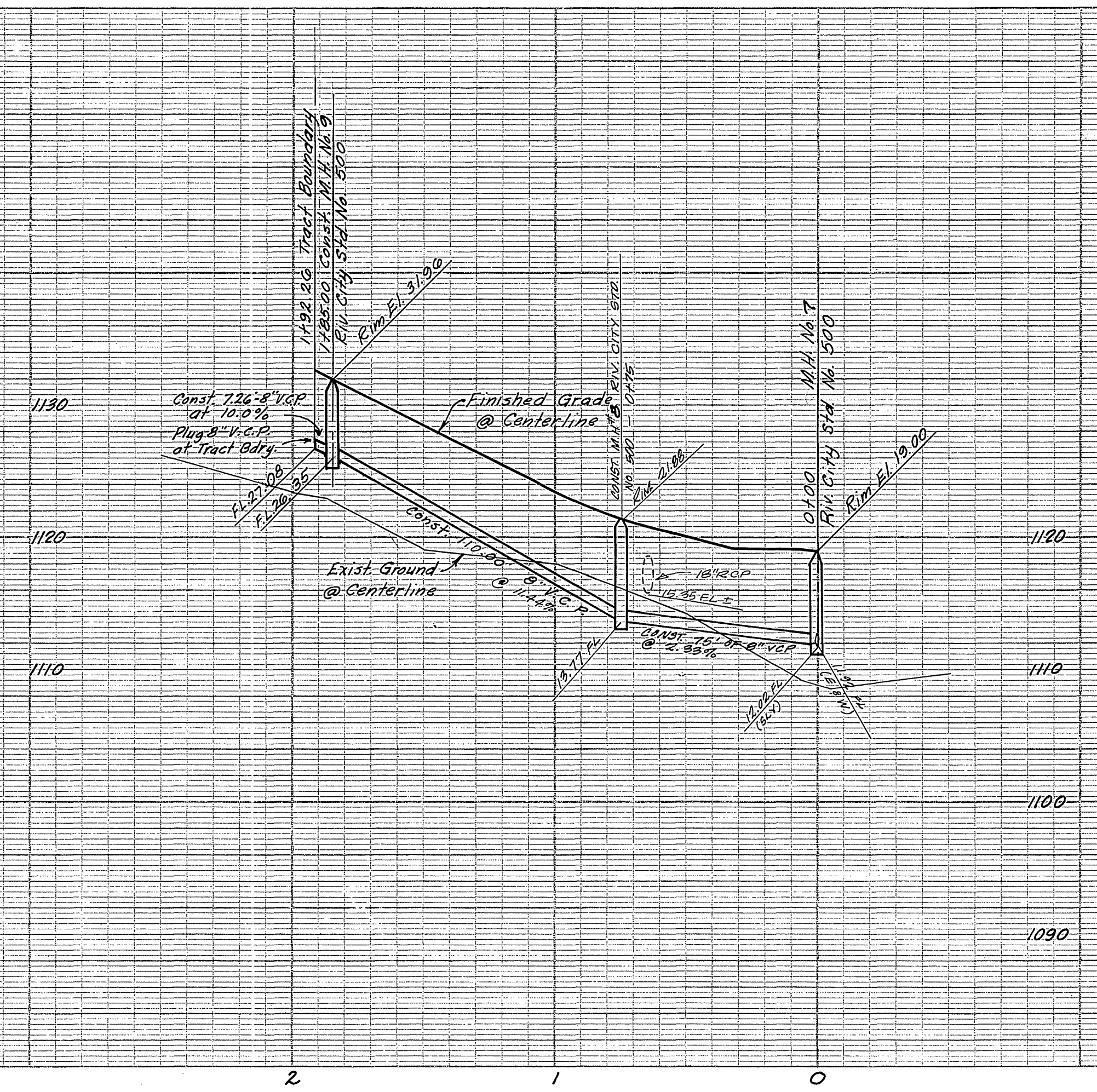
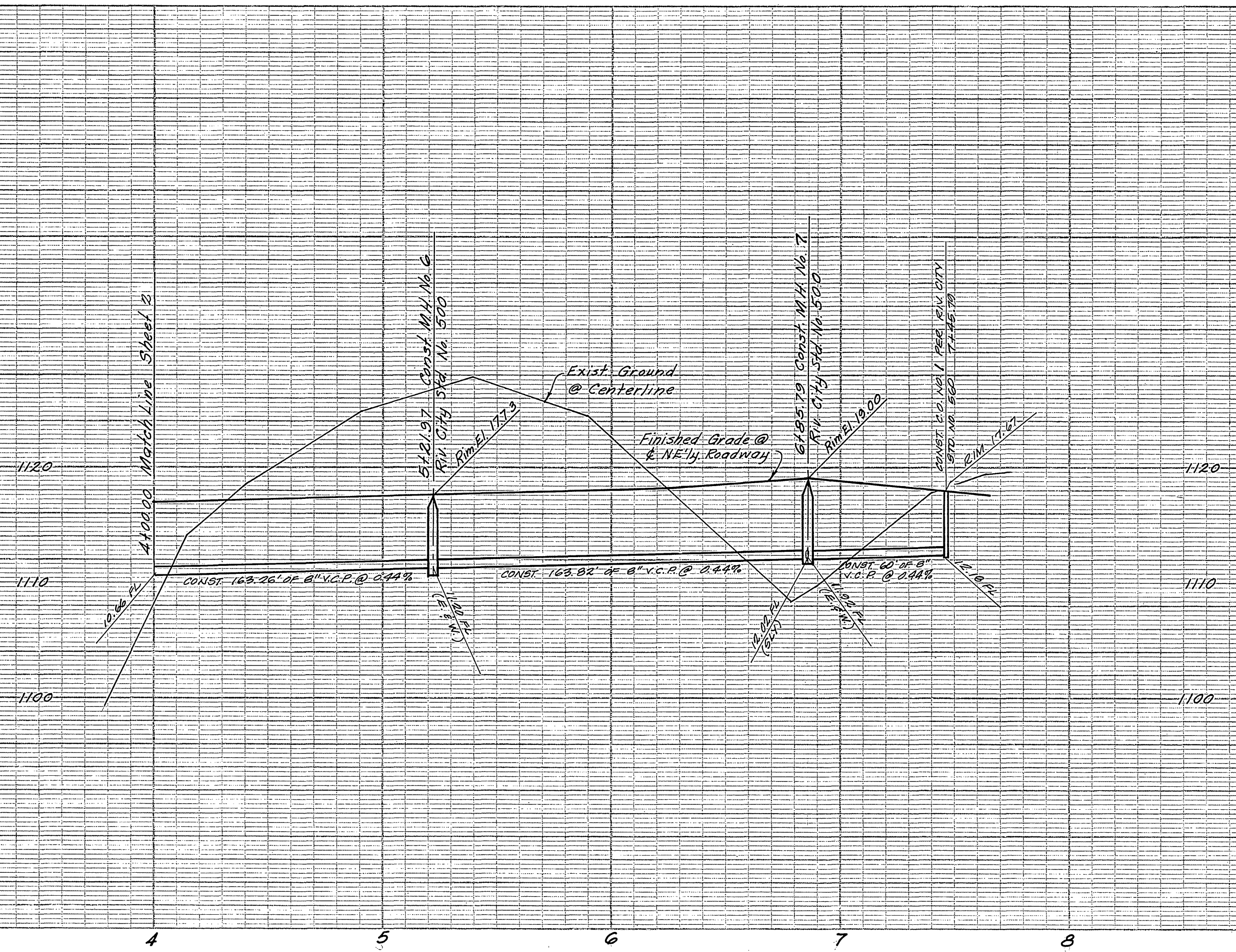
J. F. DAVIDSON-CIVIL ENGINEER
 R.E. NO. 862
 RIVERSIDE, CALIFORNIA
 APPROVED BY *[Signature]* DATE 11/16/64

CITY OF RIVERSIDE, CALIFORNIA
 DEPARTMENT OF PUBLIC WORKS

Sewer PLAN & PROFILE
TRACT 3439
COUNTRY CLUB DRIVE
 VIA SAN JACINTO to SHAKER DR.
 HORIZ. SCALE 1"=40' VERT. SCALE 1"=8'

DESIGNED BY
 DRAWN BY
 RECOMMENDED BY *[Signature]*
 ASSISTANT CITY ENGINEER

APPROVED BY *[Signature]*
 Director of Public Works
 DATE 3-7-66
 NO. 3-648
 SHEET 2 OF 9



Note:
No connections to sewer between
Tract Boundary & last structure
until sewer upstream is constructed.

Note: Laterals to be located
in the field.

* AS BUILT 1-24-67

Bench Mark: Top of 4" I.P. filled with Conc.
at South West Corner of Sec. 31
Elevation: 1138.41'

F.B. 065-53 853-23 837-53 & 56

J. P. DAVIDSON - CIVIL ENGINEER
R.E. NO. 862
RIVERSIDE, CALIFORNIA

APPROVED BY *George E. McCarty* DATE 11/10/66
R.E. 10688

CITY OF RIVERSIDE, CALIFORNIA
DEPARTMENT OF PUBLIC WORKS

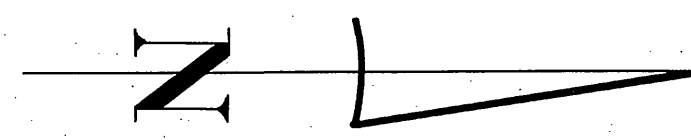
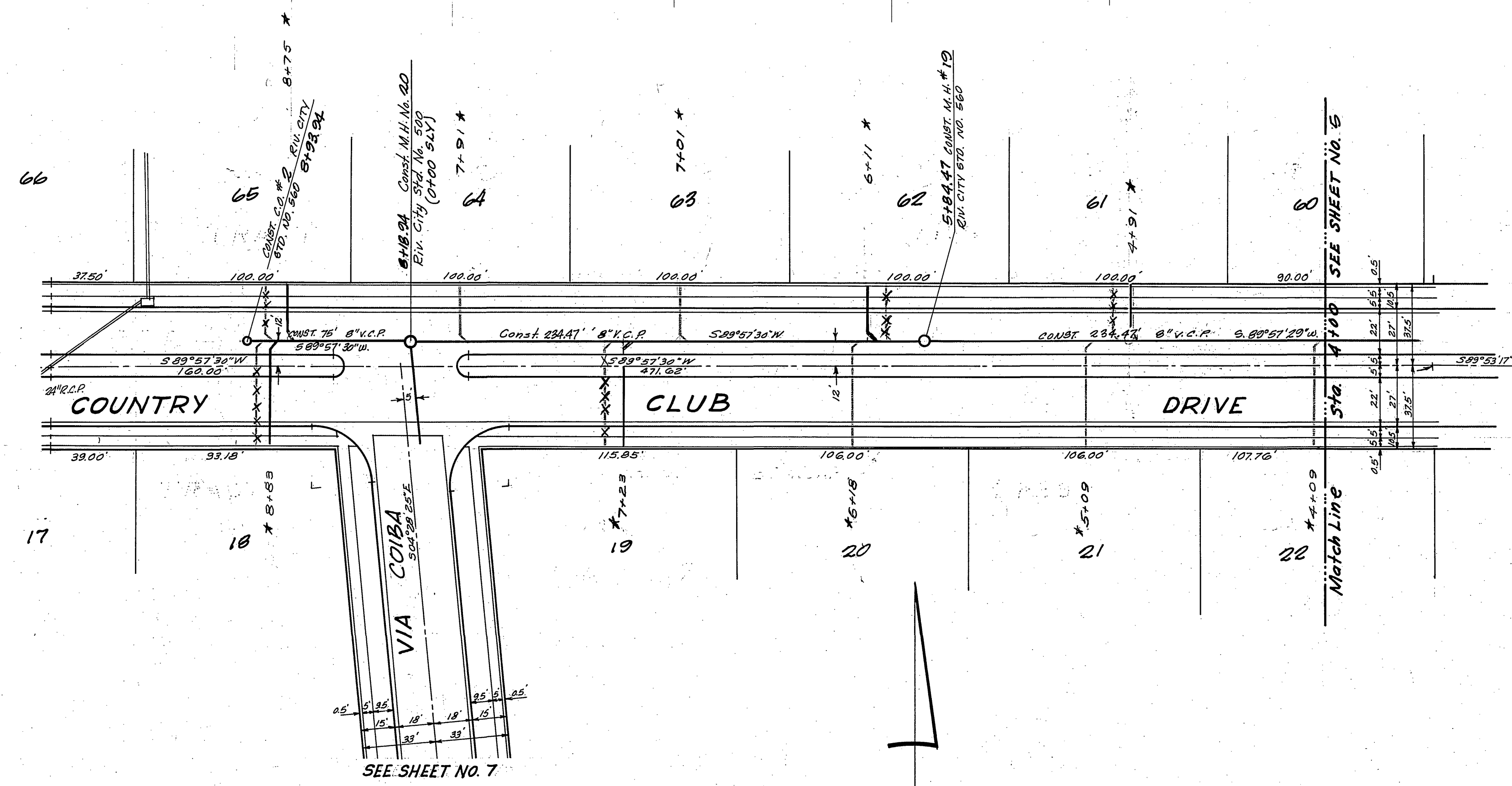
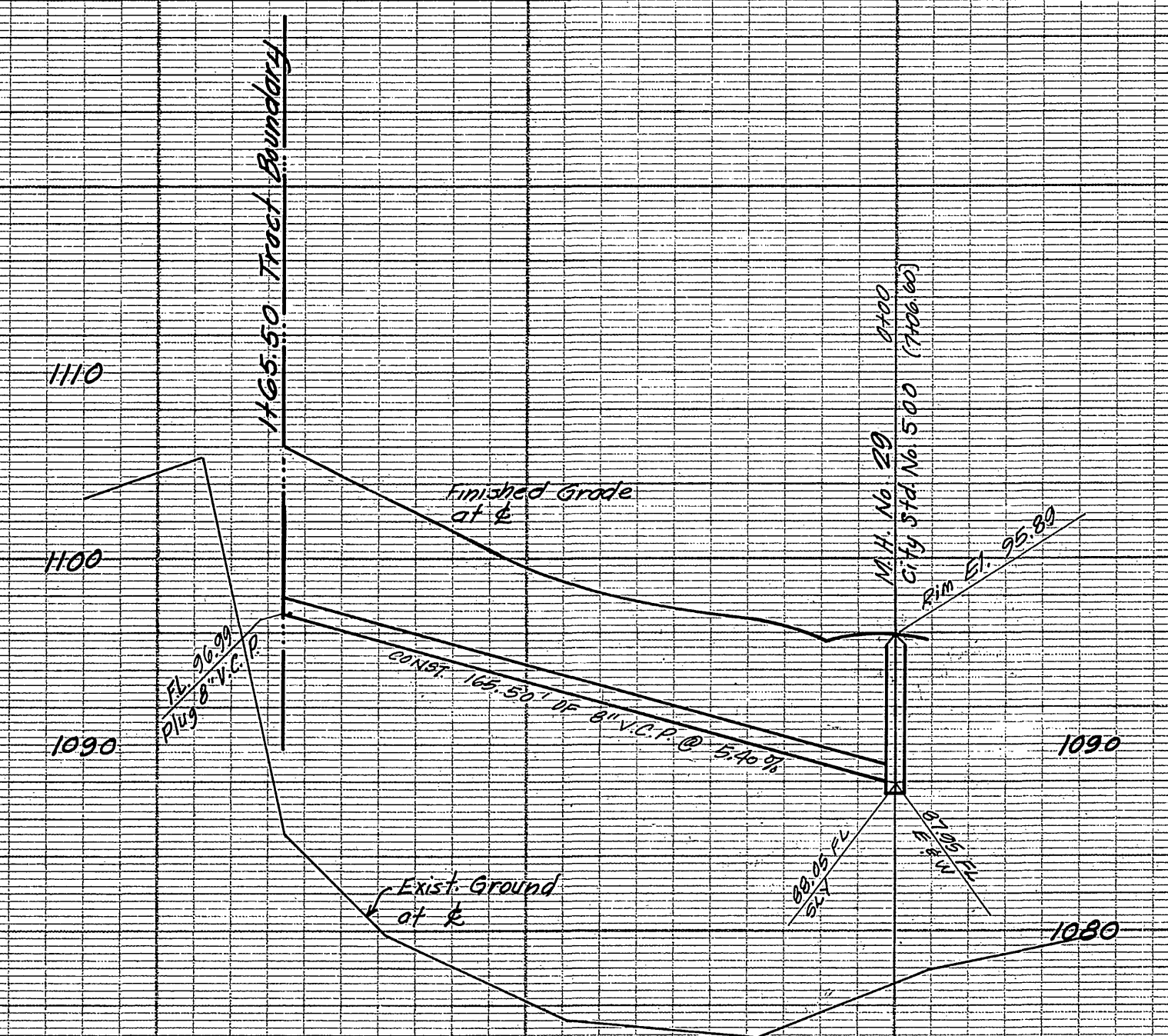
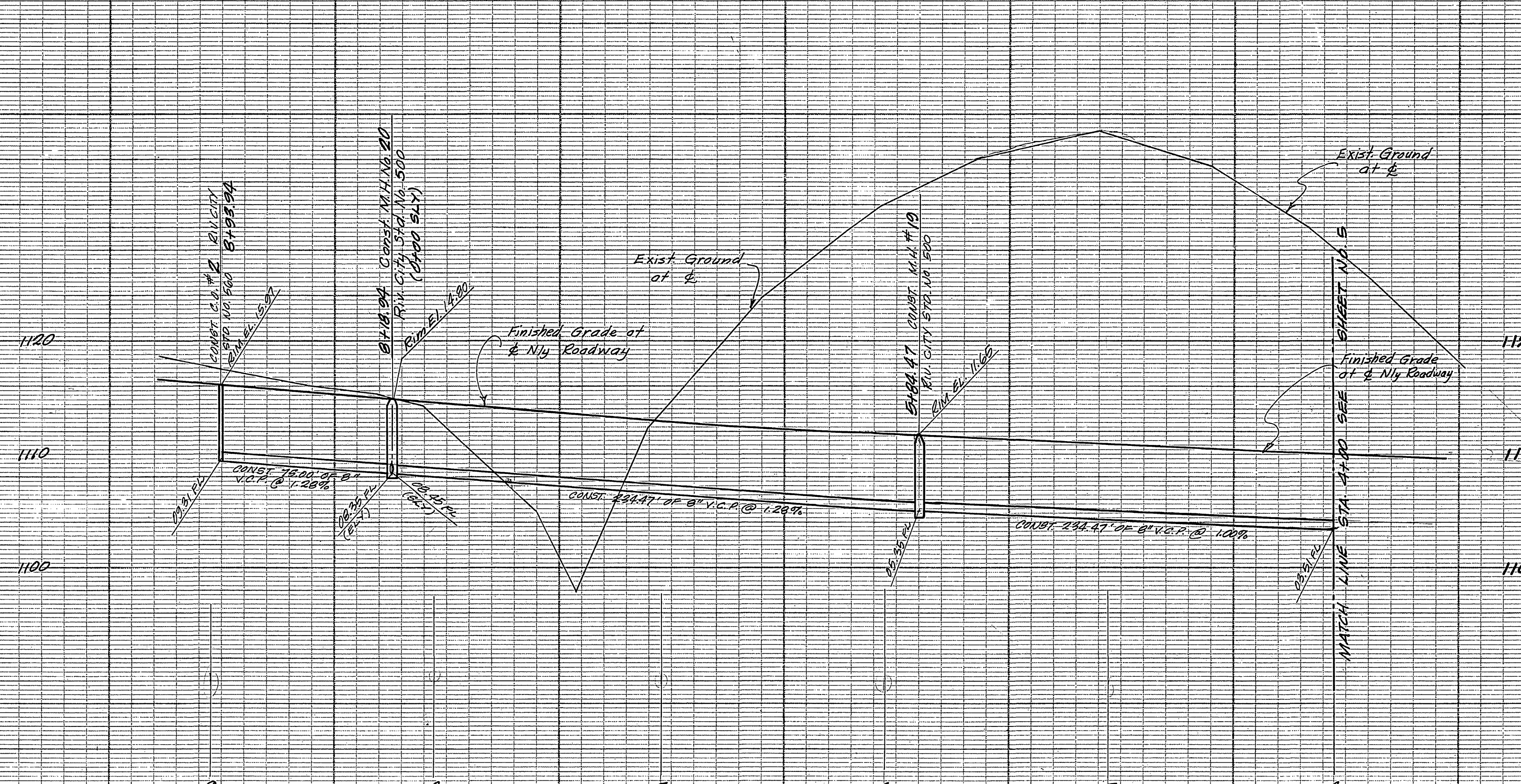
Sewer PLAN & PROFILE
TRACT 9499
TRENTON DRIVE

COUNTRY CLUB DRIVE
HORIZ. SCALE 1"=40' VERT. SCALE 1"=8'

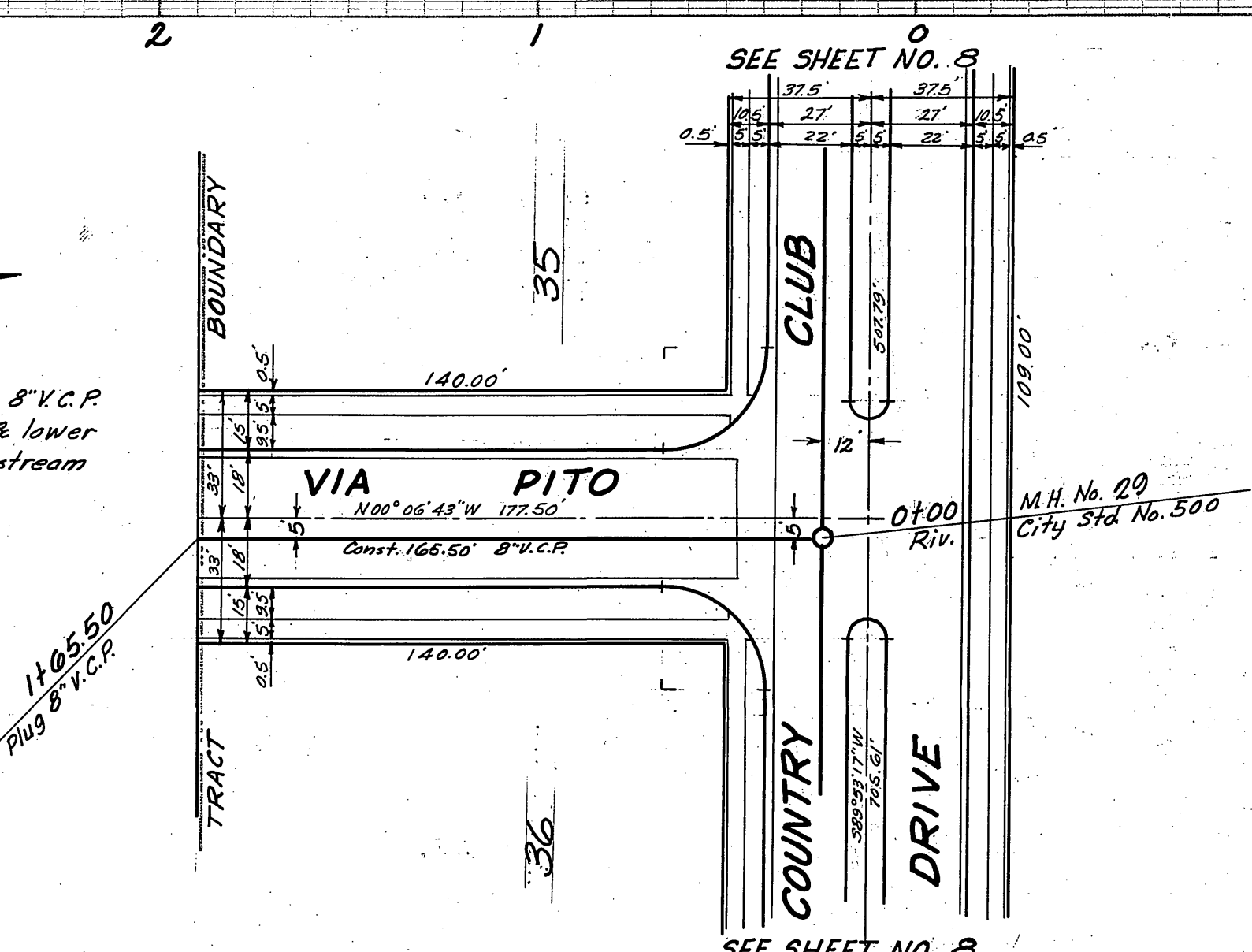
APPROVED BY *Harry W. ...*
Director of Public Works

NO. **S-648**
DATE **3-7-66** SHEET **3**

ENTIRE SHEET 4/1/66
MANHOLES REINFORCED &
GRADES CHANGED THROUGHOUT
BY *W. B. ...*
APPROVED



Note: No connections to 8" V.C.P. between tract boundary & lower structure until sewer upstream is constructed.



* AS BUILT 1-24-67 KRS

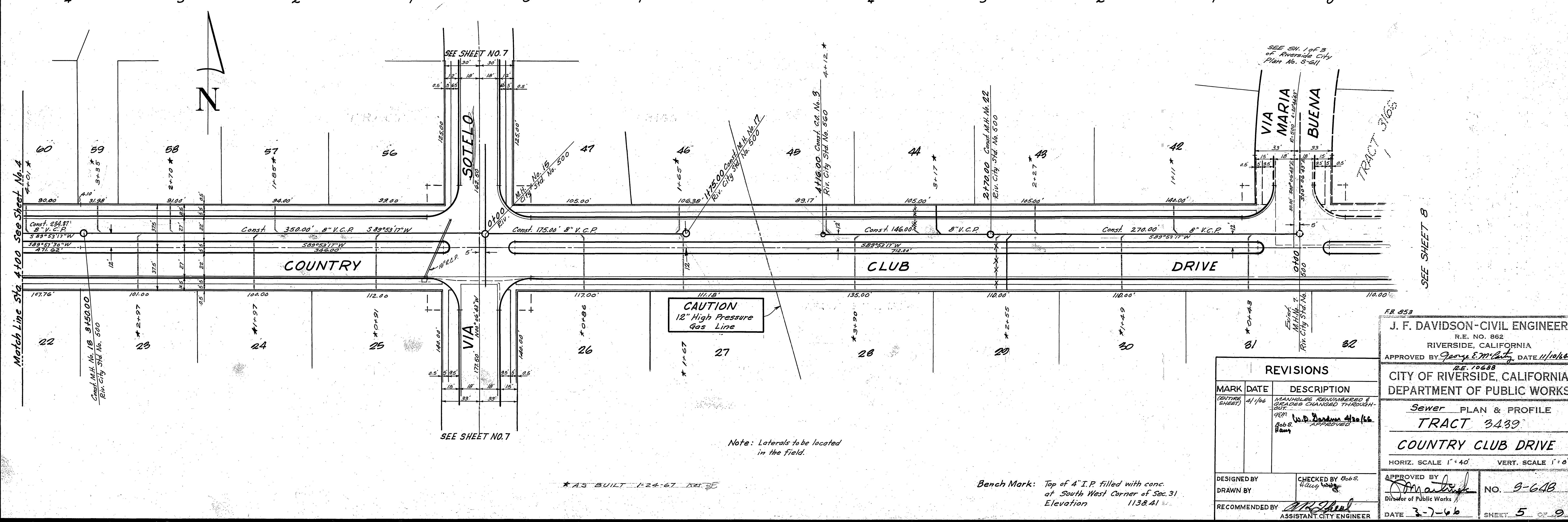
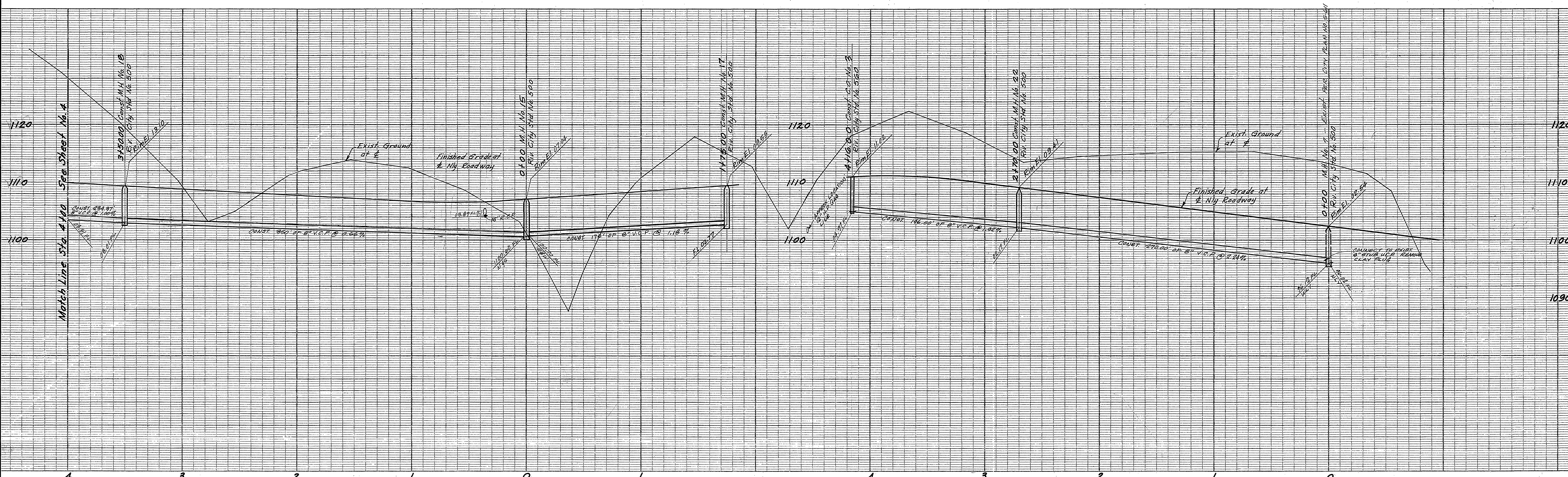
Note: Laterals to be located in the field.

Bench Mark: Top of 4" I.P. filled with conc. at South West Corner of Sec. 31. Elevation 1138.41

J. F. DAVIDSON - CIVIL ENGINEER
R.E. NO. 862
RIVERSIDE, CALIFORNIA
APPROVED BY *George E. M. Lutz* DATE 11/10/64
E.E. 10228

REVISIONS		DESCRIPTION
MARK	DATE	
(ENTIRE SHEET)	4/1/66	MANHOLES RENUMBERED & GRADES CHANGED THROUGHOUT J.F. Davidson B.S. Rain

CITY OF RIVERSIDE, CALIFORNIA DEPARTMENT OF PUBLIC WORKS	
Sewer PLAN & PROFILE TRACT 3439 VIA PITO COUNTRY CLUB DRIVE	
HORIZ. SCALE 1" = 40'	VERT. SCALE 1" = 8'
APPROVED BY <i>William B. Davidson</i> DIRECTOR OF PUBLIC WORKS	PROJ. NO. 5-648
DATE 3-7-66	SHEET 4 OF 9



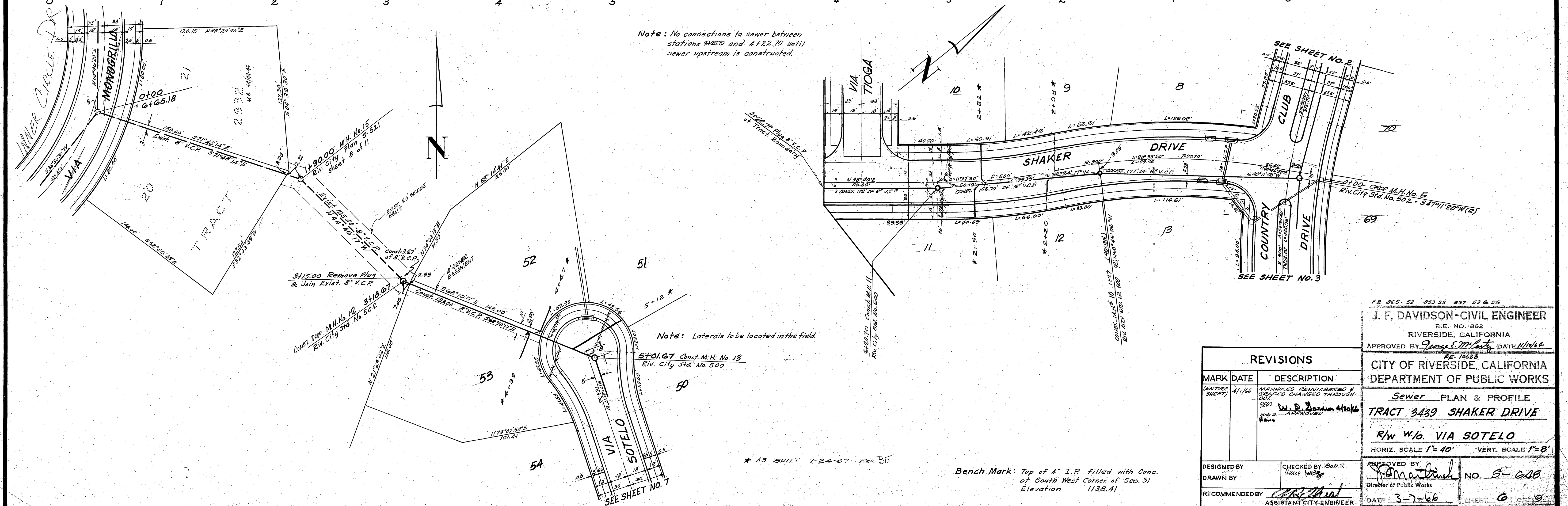
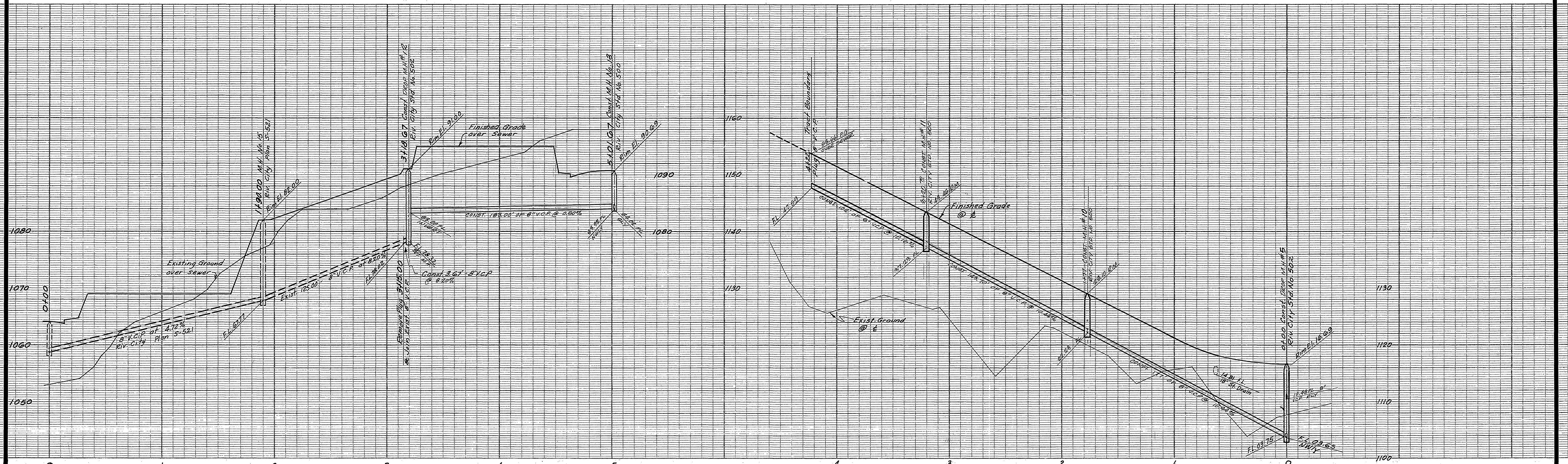
Note: Laterals to be located in the field.

* A.S. BUILT 1-24-67

Bench Mark: Top of 4" I.P. filled with conc. of South West Corner of Sec. 31 Elevation 1138.41

REVISIONS	
MARK	DESCRIPTION
41/106	MANHOLE RENUMBERED & LOCATION CHANGED THROUGHOUT
92/1	W.D. Davidson (Signature)
906.5	Ham

FR 853
J. F. DAVIDSON - CIVIL ENGINEER
 R.E. NO. 862
 RIVERSIDE, CALIFORNIA
 APPROVED BY *George E. M. Kelly* DATE 11/10/66
 R.E. 10688
CITY OF RIVERSIDE, CALIFORNIA
DEPARTMENT OF PUBLIC WORKS
 Sewer PLAN & PROFILE
TRACT 3439
 COUNTRY CLUB DRIVE
 HORIZ. SCALE 1" = 40' VERT. SCALE 1" = 8'
 DESIGNED BY
 DRAWN BY
 RECOMMENDED BY
 ASSISTANT CITY ENGINEER
 APPROVED BY
 Director of Public Works
 DATE 3-7-66
 NO. 9-648
 SHEET 5 OF 9



REVISIONS		
MARK	DATE	DESCRIPTION
(ENTER SHEET)	11/66	MANHOLES REMEMBERED & GRADES CHANGED THROUGHOUT
		W. D. Dorman, Jr. APPROVED

F.B. 865-53 853-23 837-53 & 56

J. F. DAVIDSON-CIVIL ENGINEER
 R.E. NO. 862
 RIVERSIDE, CALIFORNIA

APPROVED BY *George S. McElroy* DATE 11/14/66
 R.E. 10688

CITY OF RIVERSIDE, CALIFORNIA
 DEPARTMENT OF PUBLIC WORKS

Sewer PLAN & PROFILE
TRACT 3439 SHAKER DRIVE
 R/W W/O VIA SOTELO

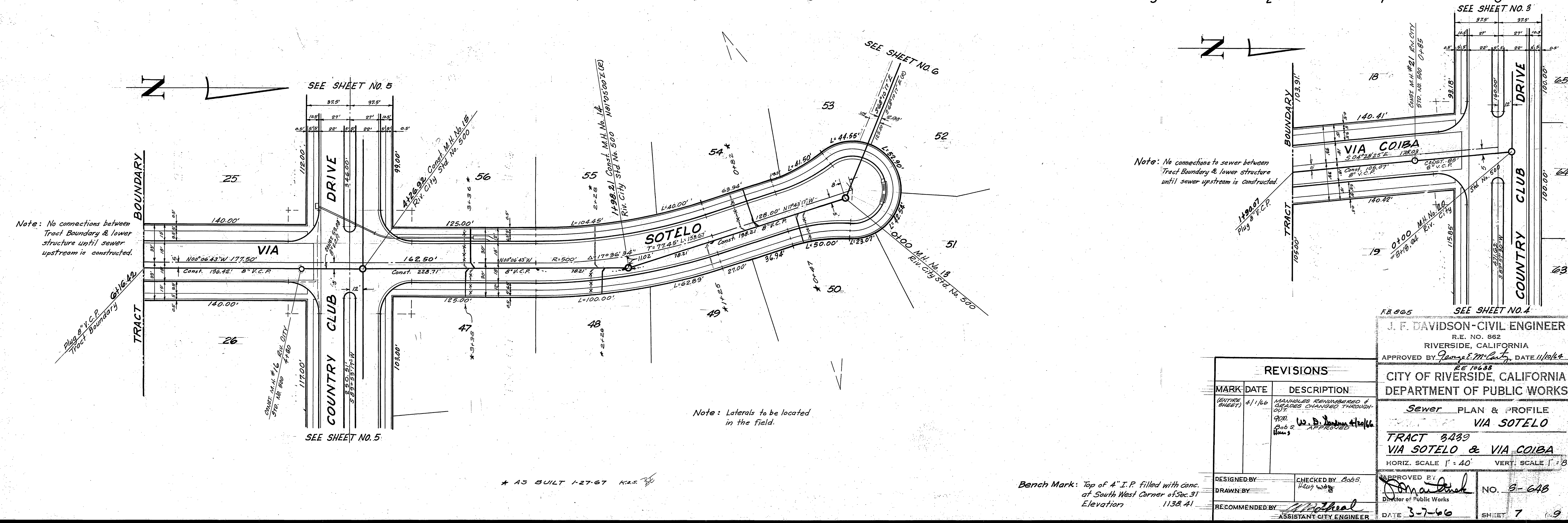
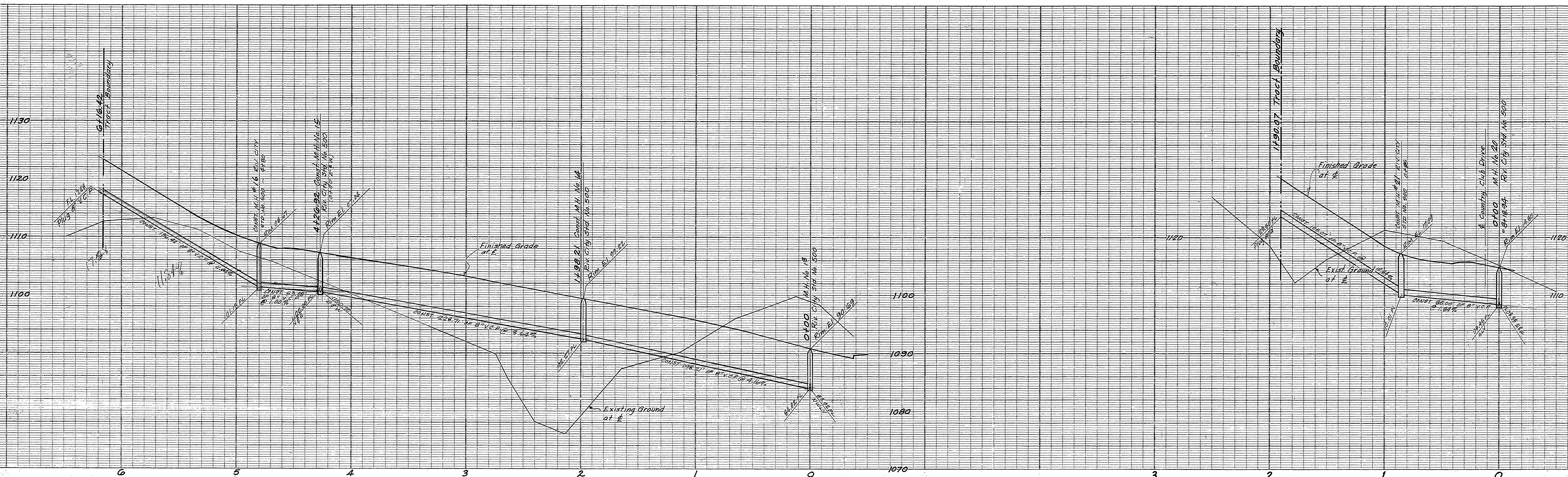
HORIZ. SCALE 1"=40' VERT. SCALE 1"=8'

DESIGNED BY
 DRAWN BY
 RECOMMENDED BY *W.D. Dorman, Jr.* ASSISTANT CITY ENGINEER

CHECKED BY Bob's *Wiley*

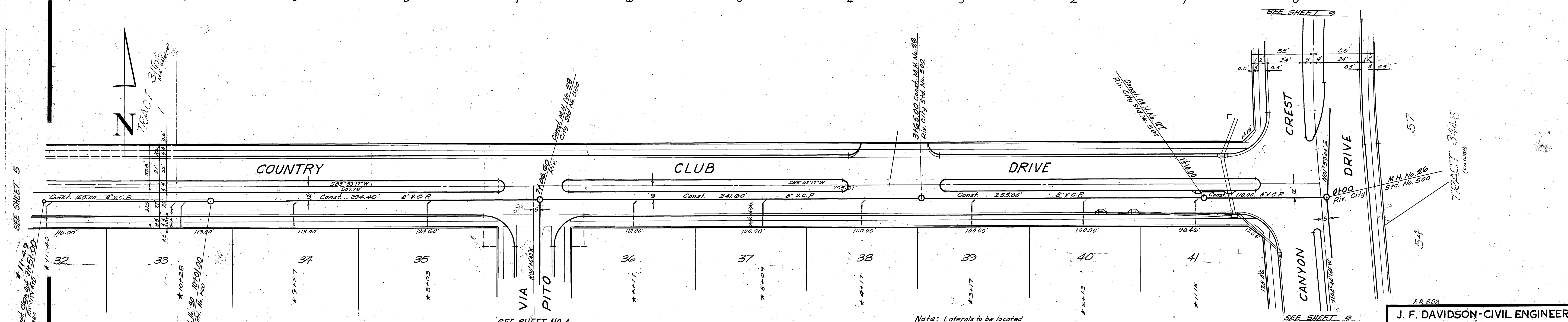
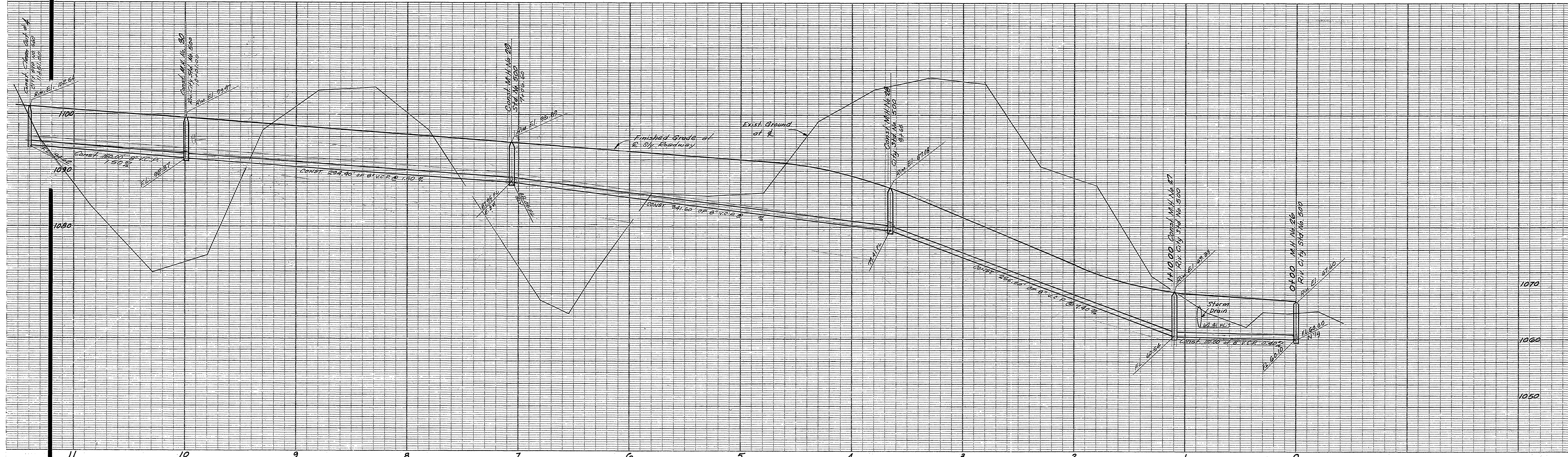
APPROVED BY *Tom...* NO. 5-CAB
 Director of Public Works

DATE 3-7-66 SHEET 6 OF 9



REVISIONS		
MARK	DATE	DESCRIPTION
(ENTIRE SHEET)	4/1/66	MANHOLE REARRANGED, & GRADES CHANGED THROUGHOUT.
		W. D. Davidson

J. F. DAVIDSON-CIVIL ENGINEER
 R.E. NO. 862
 RIVERSIDE, CALIFORNIA
 APPROVED BY *George E. M. Coats*, DATE 11/10/64
 R.E. 10638
 CITY OF RIVERSIDE, CALIFORNIA
 DEPARTMENT OF PUBLIC WORKS
 Sewer PLAN & PROFILE
 VIA SOTELO
 TRACT 3439
 VIA SOTELO & VIA COIBA
 HORIZ. SCALE 1" = 40' VERT. SCALE 1" = 8'
 DESIGNED BY: [Signature]
 DRAWN BY: [Signature]
 RECOMMENDED BY: [Signature] ASSISTANT CITY ENGINEER
 APPROVED BY: [Signature] Director of Public Works
 NO. 3-648
 DATE 3-7-66 SHEET 7



SEE SHEET 5

SEE SHEET 9

SEE SHEET NO. 4

SEE SHEET 9

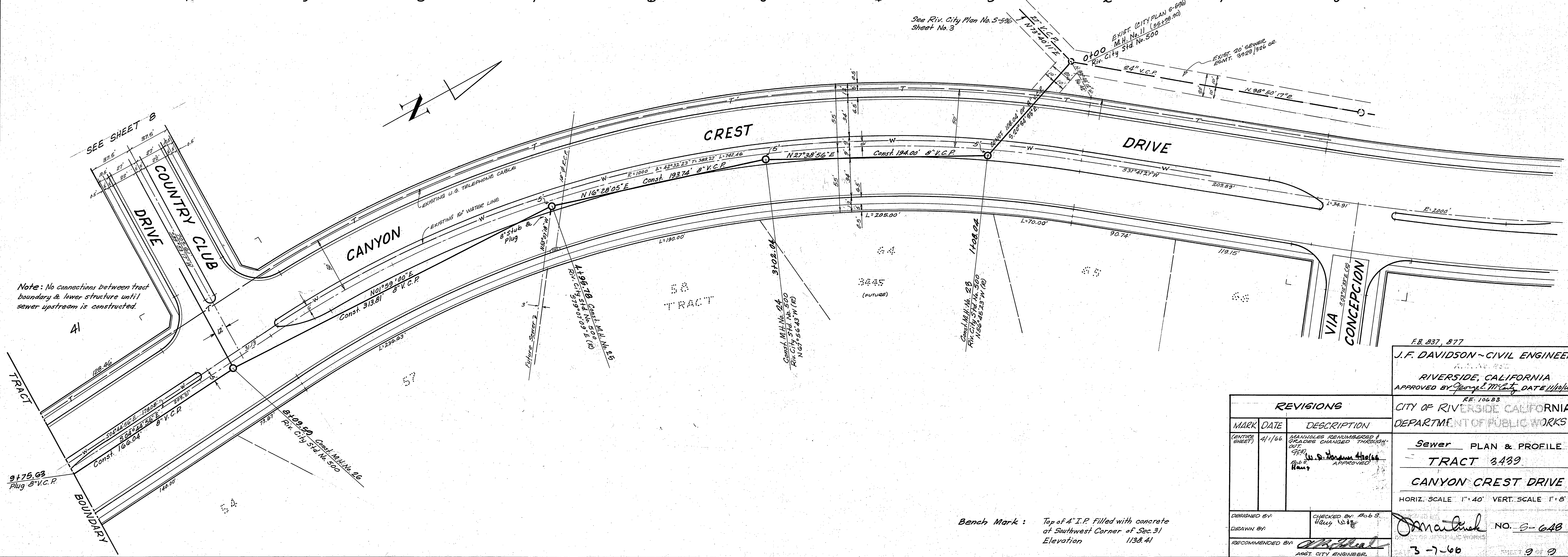
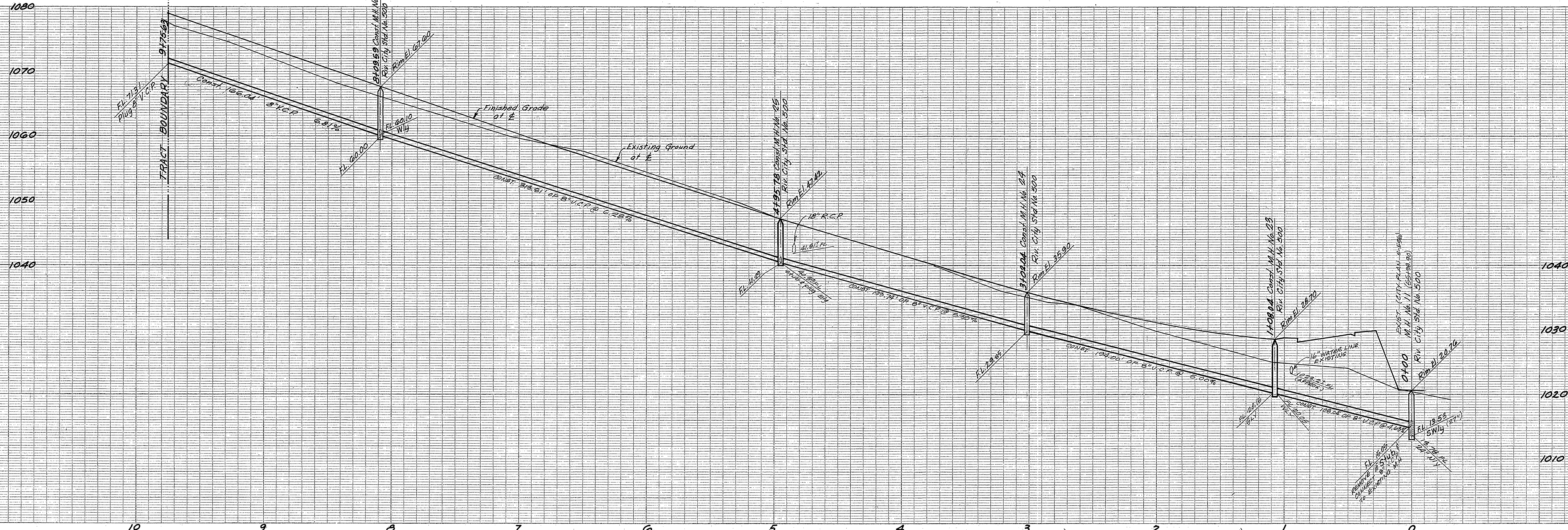
Note: Laterals to be located in the field.

★ AS BUILT 1-27-67

Bench Mark: Top of A.I.P. filled with concrete of Southwest Corner of Sec. 31 Elevation 1138.1

REVISIONS		
MARK	DATE	DESCRIPTION
(ENTIRE SHEET)	4/1/66	MANHOLES RE-NUMBERED & GRADES CHANGED THROUGHOUT
	2/2/67	W.D. Davidson 4/2/66
	2/2/67	APPROVED

J. F. DAVIDSON-CIVIL ENGINEER
 RIVERSIDE, CALIFORNIA
 APPROVED BY *George M. Galt* DATE 11/10/66
 R.S. 10688
 CITY OF RIVERSIDE, CALIFORNIA
 DEPARTMENT OF PUBLIC WORKS
 Sewer PLAN & PROFILE
 TRACT 3489
 COUNTRY CLUB DRIVE
 HORIZ. SCALE 1"=40' VERT. SCALE 1"=8'
 DESIGNED BY
 DRAWN BY
 RECOMMENDED BY *W.D. Davidson* ASSISTANT CITY ENGINEER
 CHECKED BY *Bob B.*
 APPROVED BY *George M. Galt* Director of Public Works
 DATE 3-7-66
 NO. 5-648
 SHEET 8 9



Note: No connections between tract boundary & lower structure until sewer upstream is constructed.

Bench Mark : Top of A.I.P. filled with concrete of Southwest Corner of Sec. 31 Elevation 1138.41

F.B. 837, 877

J.F. DAVIDSON - CIVIL ENGINEER
 RIVERSIDE, CALIFORNIA
 APPROVED BY *J.F. Davidson* DATE 11/14/66

REVISIONS		DESCRIPTION
MARK	DATE	DESCRIPTION
(NONE)	11/1/66	MANHOLES RENUMBERED & GRADES CHANGED THROUGHOUT

CITY OF RIVERSIDE CALIFORNIA
 DEPARTMENT OF PUBLIC WORKS

Sewer PLAN & PROFILE
TRACT 3439
CANYON CREST DRIVE

HORIZ. SCALE 1"=40' VERT. SCALE 1"=8'

DESIGNED BY: *J.F. Davidson*
 DRAWN BY: *J.F. Davidson*
 RECOMMENDED BY: *J.F. Davidson*

CHECKED BY: *Bob S. Hays*
 AGENT CITY ENGINEER

NO. *9-648*
 3-7-66