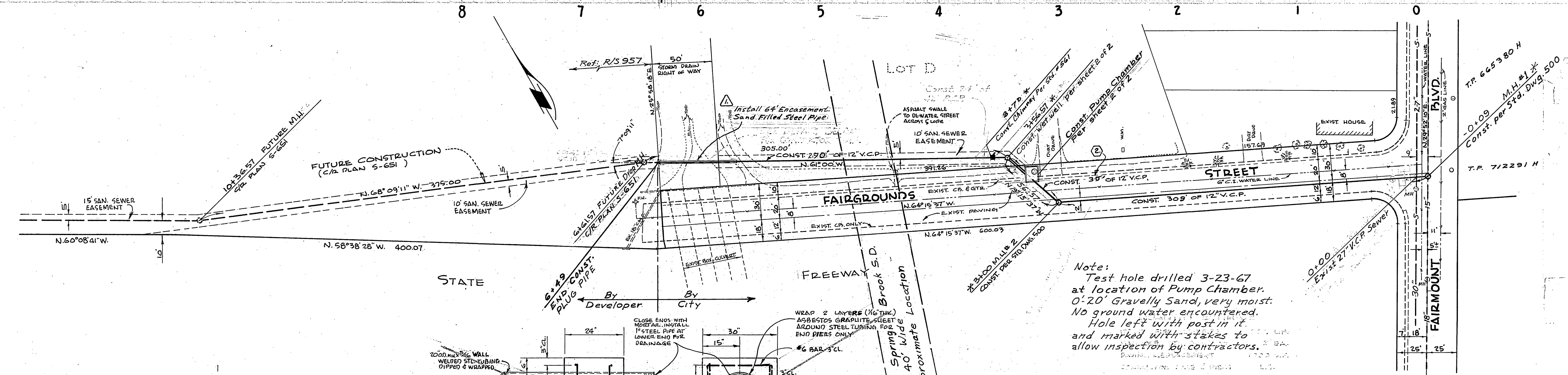
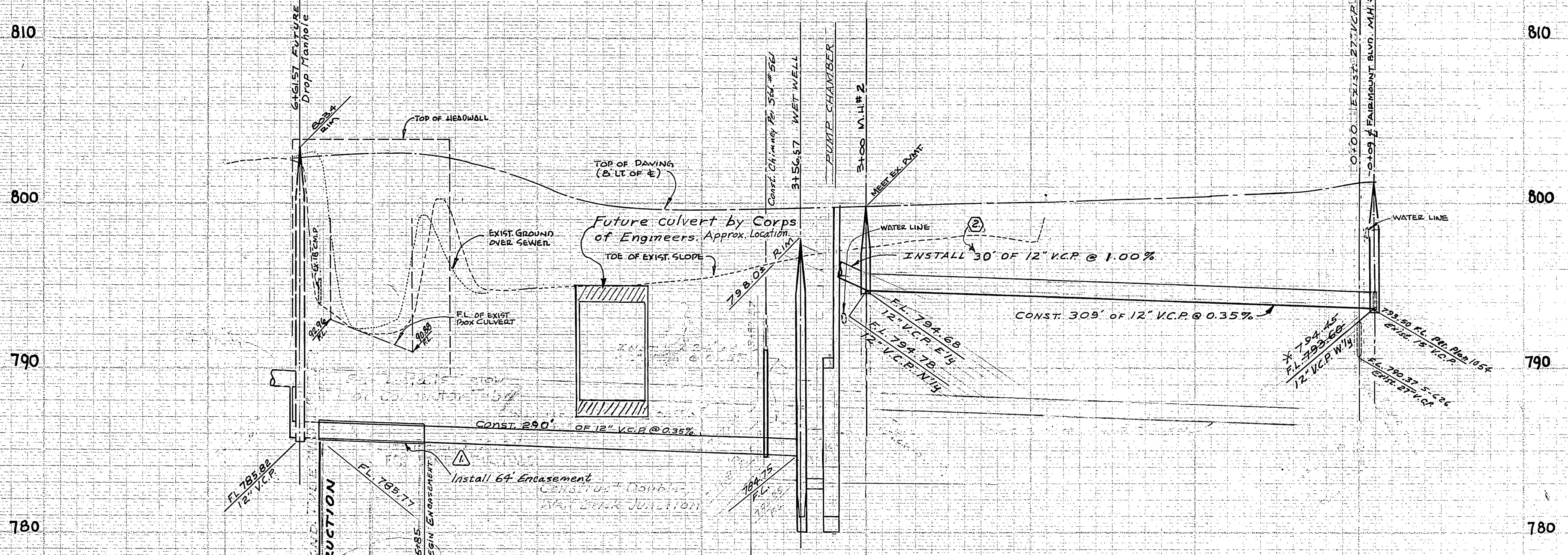


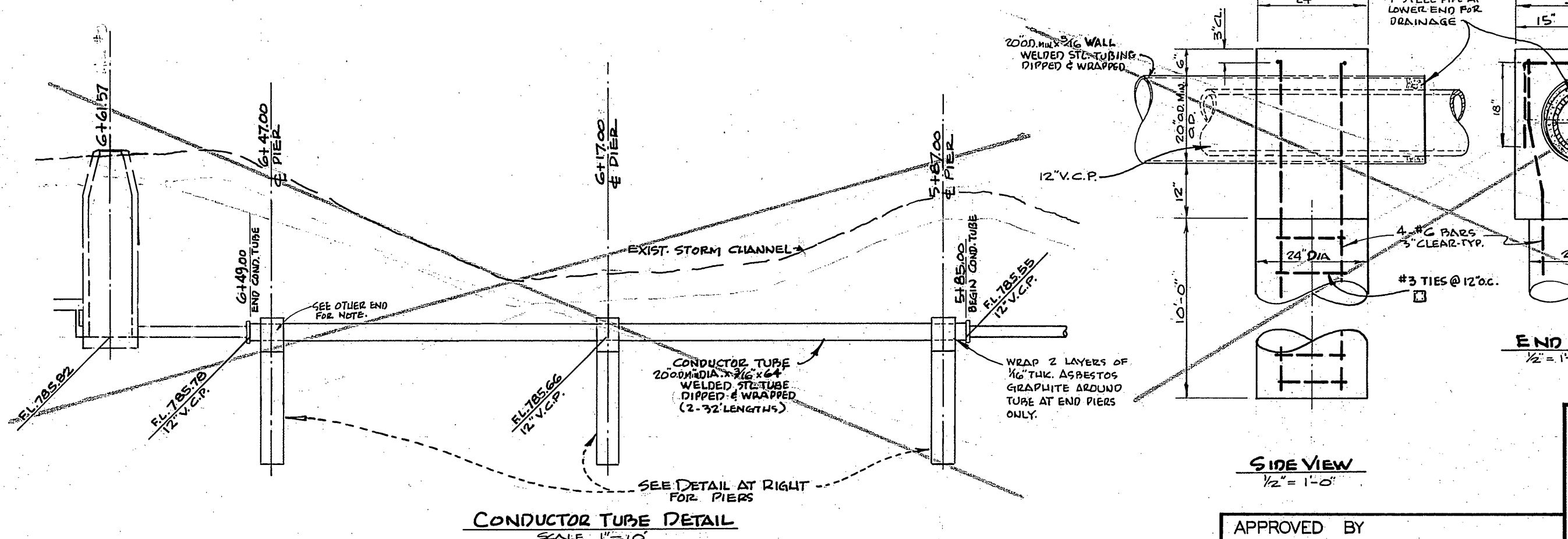
8 7 6 5 4 3 2 1 0



BENCH MARK:  
SPIKE & LEAD IN LEADWALL OF BRIDGE  
CULVERT - SOUTH SIDE CRESTMARE AVE. 500'  
EAST OF REDWOOD DR. ELEV. 796.22

- GENERAL NOTES:
- The contractor shall be responsible for the proper placement of Public Works, Street Light, and other related structures.
  - It shall be the responsibility of the contractor to obtain the right of way in accordance with the provisions of the law as it affects such utility location.
  - The contractor shall be responsible for the proper placement of all structures and appurtenances.
  - The contractor shall be responsible for the proper placement of all structures and appurtenances.
  - The contractor shall be responsible for the proper placement of all structures and appurtenances.
  - The contractor shall be responsible for the proper placement of all structures and appurtenances.
  - The contractor shall be responsible for the proper placement of all structures and appurtenances.
  - The contractor shall be responsible for the proper placement of all structures and appurtenances.

Note:  
Test hole drilled 3-23-67  
at location of Pump Chamber.  
0'-20" Gravelly Sand, very moist.  
No ground water encountered.  
Hole left with post in it  
and marked with stakes to  
allow inspection by contractors.



CONDUCTOR TUBE DETAIL  
SCALE 1"=1'-0"

APPROVED BY  
*[Signature]*  
SEWAGE TREATMENT SUPERINTENDENT

ALBERT A. WEBB ASSOCIATES  
CIVIL ENGINEERS  
RIVERSIDE, CALIFORNIA  
APPROVED BY *[Signature]* DATE 11/1/65  
R.E. No. 9876

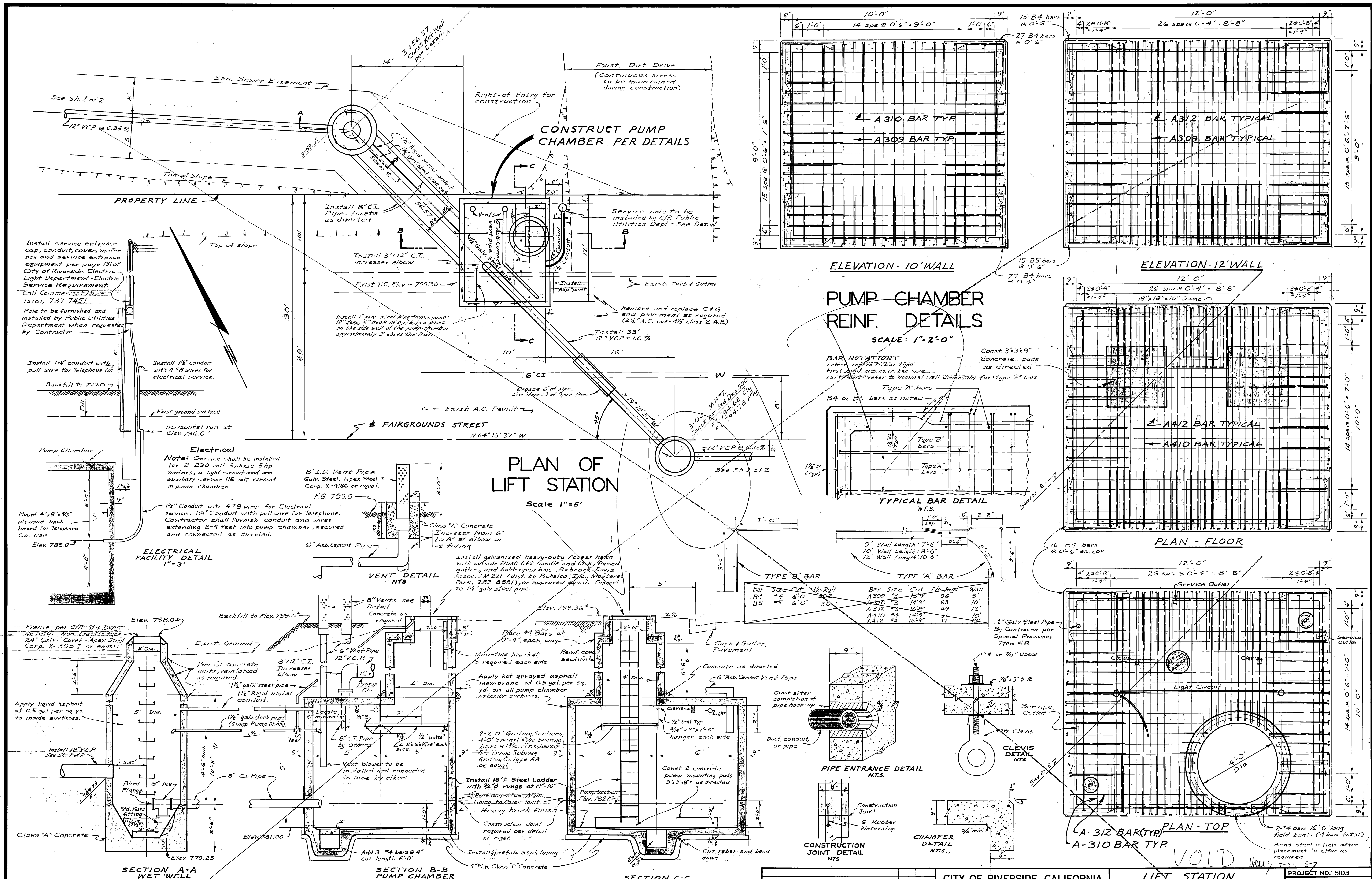
DESIGNED BY D.B.B. DRAWN BY D.B.B. CHECKED BY *[Signature]*

CITY OF RIVERSIDE, CALIFORNIA  
DEPARTMENT OF PUBLIC WORKS  
APPROVED BY *[Signature]* DATE 12-12-66  
DIRECTOR OF PUBLIC WORKS

SEWER PLAN AND PROFILE  
**FAIRGROUNDS ST. SEWER**  
WESTERLY FROM FAIRMOUNT BLVD. TO  
WESTERLY SIDE OF SPRINGBROOK STORM CHANNEL  
OFFSITE SEWER FOR ZONING CASES R-87-645 AND R-48-623

PROJECT NO. 5103  
**S-651 A**  
SHEET 1 OF 2  
FILE NO. 64-308 B





Install service entrance cap, conduit, cover, meter box and service entrance equipment per page 131 of City of Riverside Electric Light Department - Electric Service Requirement. Call Commercial Division 15101 787-7451.

Pole to be furnished and installed by Public Utilities Department when requested by Contractor.

Install 1 1/2" conduit with pull wire for Telephone Co.

Install 1 1/2" conduit with 4 #8 wires for electrical service.

Backfill to 799.0

Horizontal run at Elev. 796.0

Exist. ground surface

Pump Chamber

Mount 4" x 8" x 3/8" plywood back board for Telephone Co. use.

Elev. 785.0

**Electrical**

Note: Service shall be installed for 2-230 volt 3 phase 5hp motors, a light circuit and an auxiliary service 115 volt circuit in pump chamber.

1 1/2" Conduit with 4 #8 wires for Electrical service. 1 1/2" Conduit with pull wire for Telephone. Contractor shall furnish conduit and wires extending 2-4 feet into pump chamber, secured and connected as directed.

8" I.D. Vent Pipe Galv. Steel, Apex Steel Corp. X-4186 or equal. F.G. 799.0

Class "A" Concrete Increase from 6" to 8" at elbow or at fitting

6" Asb. Cement Pipe

Install galvanized heavy-duty Access Hatch with outside flush lift handle and lock, formed gutters and hold-open bar. Babcock Davis Assoc. AM 221 (dist. by Bohalco, Inc., Monterey Park, 283-8881), or approved equal. Connect to 1 1/2" galv. steel pipe.

Place #4 Bars at 0'-4", each way

Reinf. concrete section

Apply hot sprayed asphalt membrane at 0.5 gal. per sq. yd. on all pump chamber exterior surfaces.

Concrete as directed

6" Asb. Cement Vent Pipe

Clevis

1/2" bolt typ.

3/16" x 2" x 1'-6" hanger each side

Const 2 concrete pump mounting pads 3' x 3' x 9" as directed

Pump Suction Elev. 782.75

Install 18" x 8" Steel Ladder with 3/4" x 3" rungs at 4'-16"

Prefabricated Asph. Lining to cover joint

Heavy brush finish

Construction Joint required per detail at right.

Install prefab. asph. lining

4" Min. Class "C" Concrete

Frame per C/R Std. Dwg. No. 3310. Non-Ferrous Type, 24" galv. Cover, Apex Steel Corp. X-3051 or equal.

Apply liquid asphalt at 0.5 gal per sq. yd. to inside surfaces.

Install 12" V.C.P. See Sp. 1 of 2

Blind Flange

8" Tee

Std. flange fitting (1/2" x 2 1/2")

Class "A" Concrete

Elev. 779.25

Elev. 798.0

Backfill to Elev. 799.0

Exist. Ground

8" x 12" C.I. Increaser Elbow

1 1/2" galv. steel pipe

1 1/2" Rigid metal conduit.

1 1/2" galv. steel pipe (Sump Pump bush)

1 1/2"

8" Vents - see Detail

Concrete as required

6" Vent Pipe 12" V.C.P.

1 1/2" x 2 1/2" x 1/4" each side

1/2" bolts

1/2" x 2 1/2" x 1/4" each side

5'

Vent blower to be installed and connected to pipe by others

8" C.I. Pipe

4'-16" min.

10'-8" min.

9'-6"

Elev. 781.00

Elev. 779.36

Place #4 Bars at 0'-4", each way

Reinf. concrete section

Apply hot sprayed asphalt membrane at 0.5 gal. per sq. yd. on all pump chamber exterior surfaces.

Concrete as directed

6" Asb. Cement Vent Pipe

Clevis

1/2" bolt typ.

3/16" x 2" x 1'-6" hanger each side

Const 2 concrete pump mounting pads 3' x 3' x 9" as directed

Pump Suction Elev. 782.75

Install 18" x 8" Steel Ladder with 3/4" x 3" rungs at 4'-16"

Prefabricated Asph. Lining to cover joint

Heavy brush finish

Construction Joint required per detail at right.

Install prefab. asph. lining

4" Min. Class "C" Concrete

Bench Mark:  
Spike & Lead in headwall of bridge culvert, South side of Crestmore Ave. 500'± East of Redwood Dr. Elev. 796.22

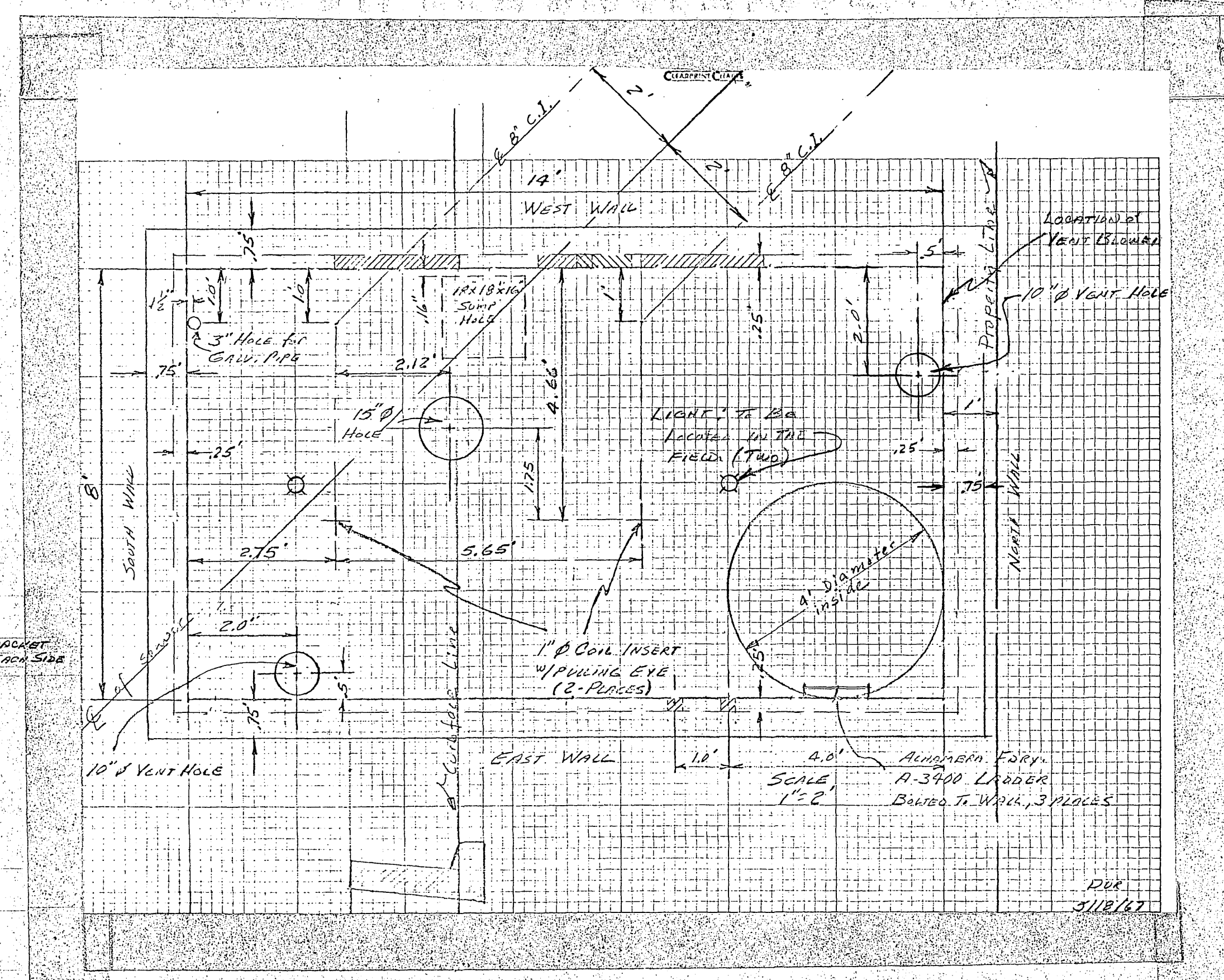
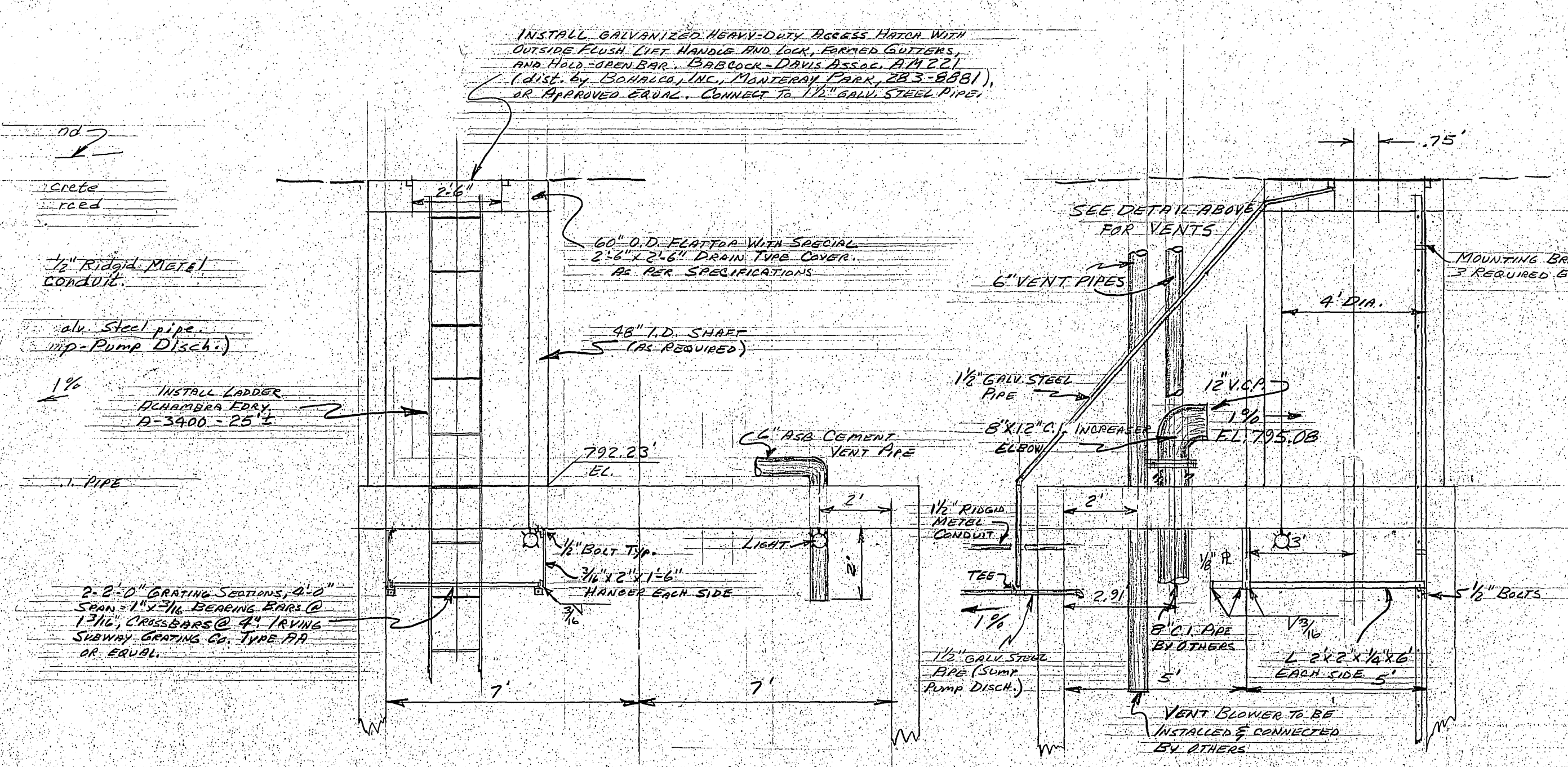
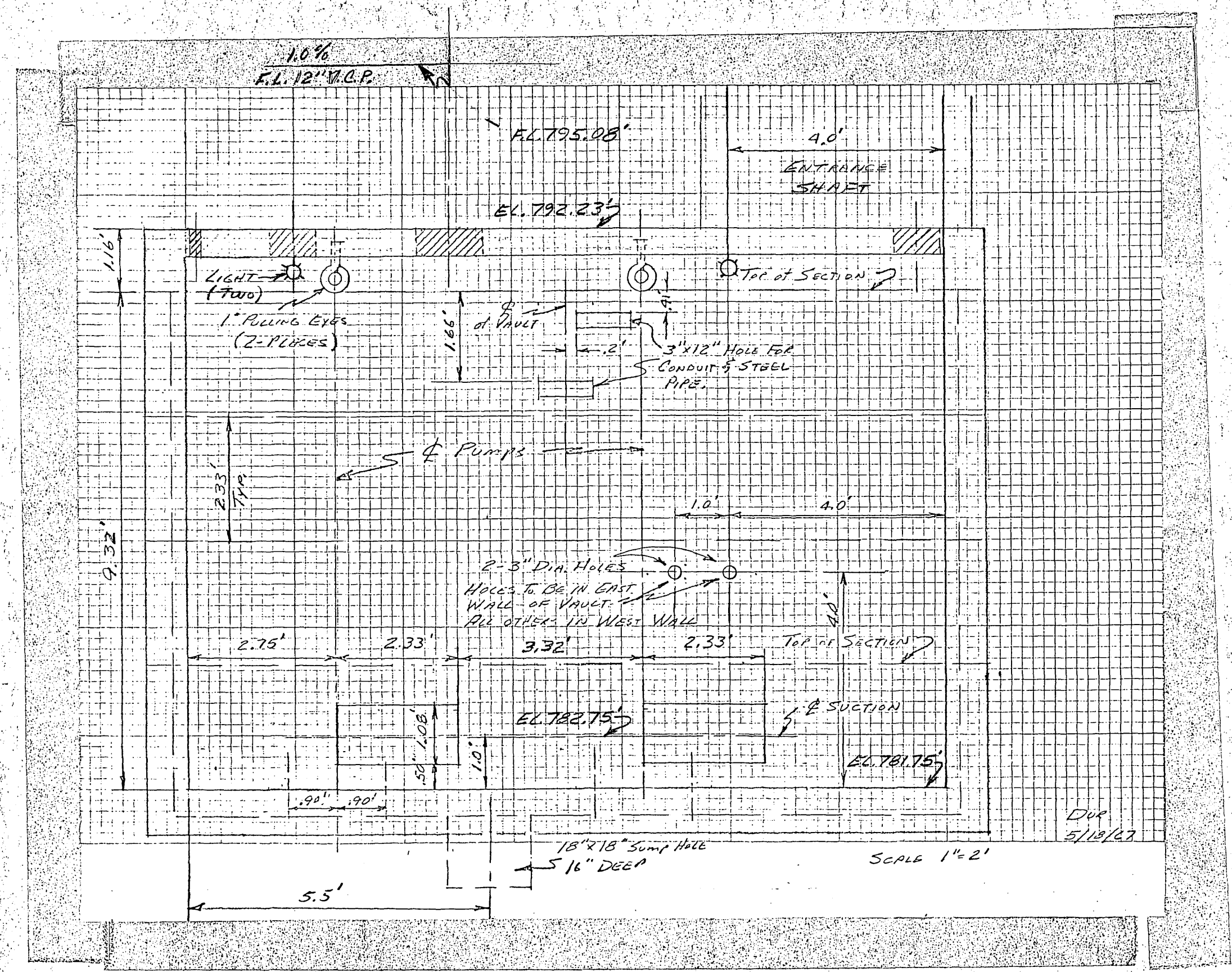
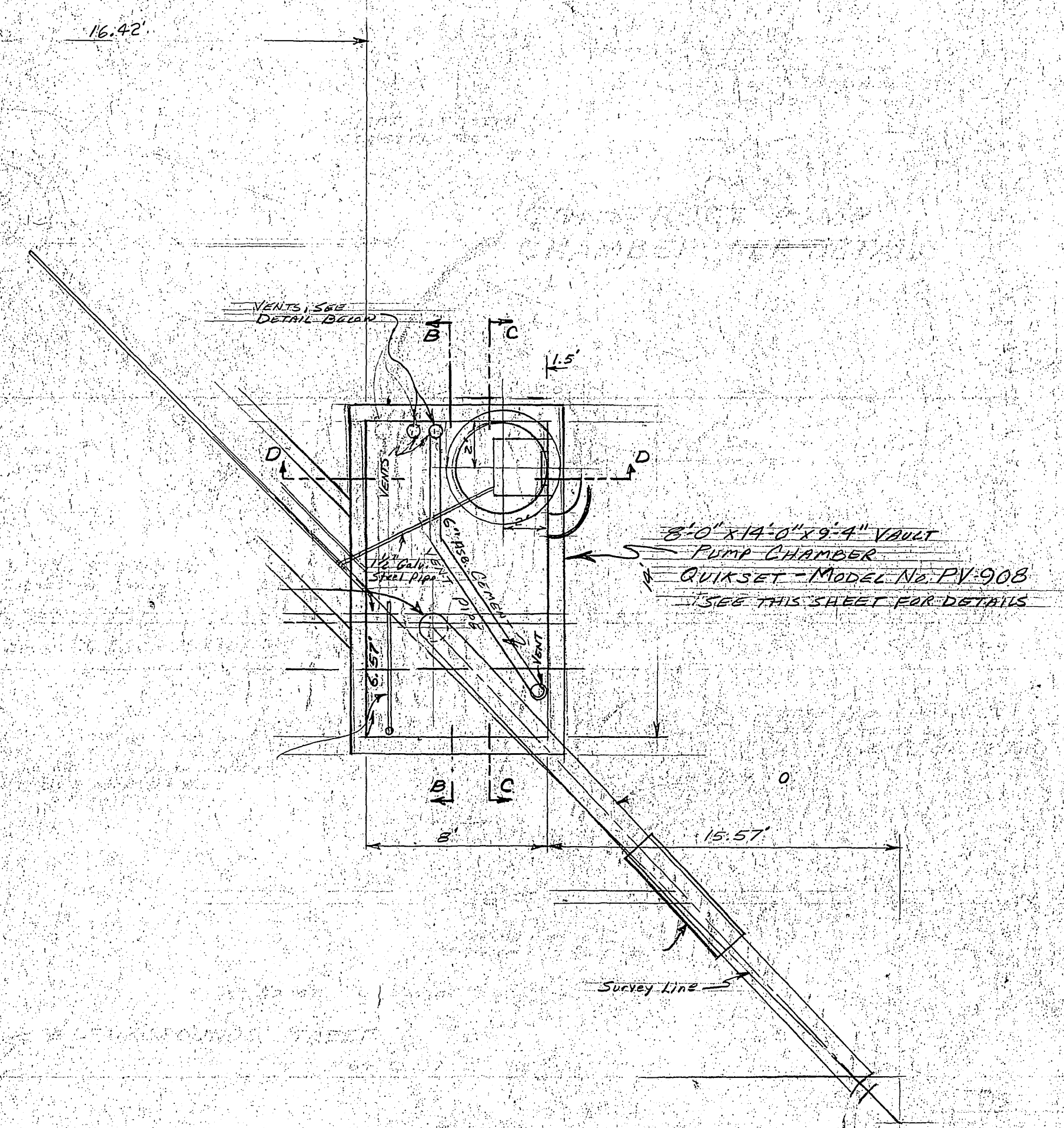
**ELEVATION SECTION DETAIL**  
Scale 1"=3'

APPROVED BY  
*H.C. Parker*  
SEWAGE TREATMENT SUPERINTENDENT

CITY OF RIVERSIDE, CALIFORNIA		LIFT STATION		PROJECT NO. 5103
DEPARTMENT OF PUBLIC WORKS		FAIRGROUNDS ST. SEWER		S-651A
APPROVED BY	BY DATE	APPROVED BY	DATE	
OFFICE ENGINEER	12-10-68	DIRECTOR OF PUBLIC WORKS	12-12-68	
PARK DEPARTMENT		TRAFFIC DIVISION		
ASSISTANT CITY ENG.	12-15			
DESIGNED BY	RET	DRAWN BY	DKC/RET	CHECKED BY
REVISIONS		APPR.	DATE	
WESTERLY FROM FAIRMOUNT BLVD. TO WESTERLY SIDE OF SPRINGBROOK STORM CHNL. OFFSITE SEWER FOR ZONING CASES R-97-645 AND R-48-623		SCALE: AS SHOWN		FILE NO.

SHEET 2 OF 2





SCALE 1"=3'

PUMP CHAMBER

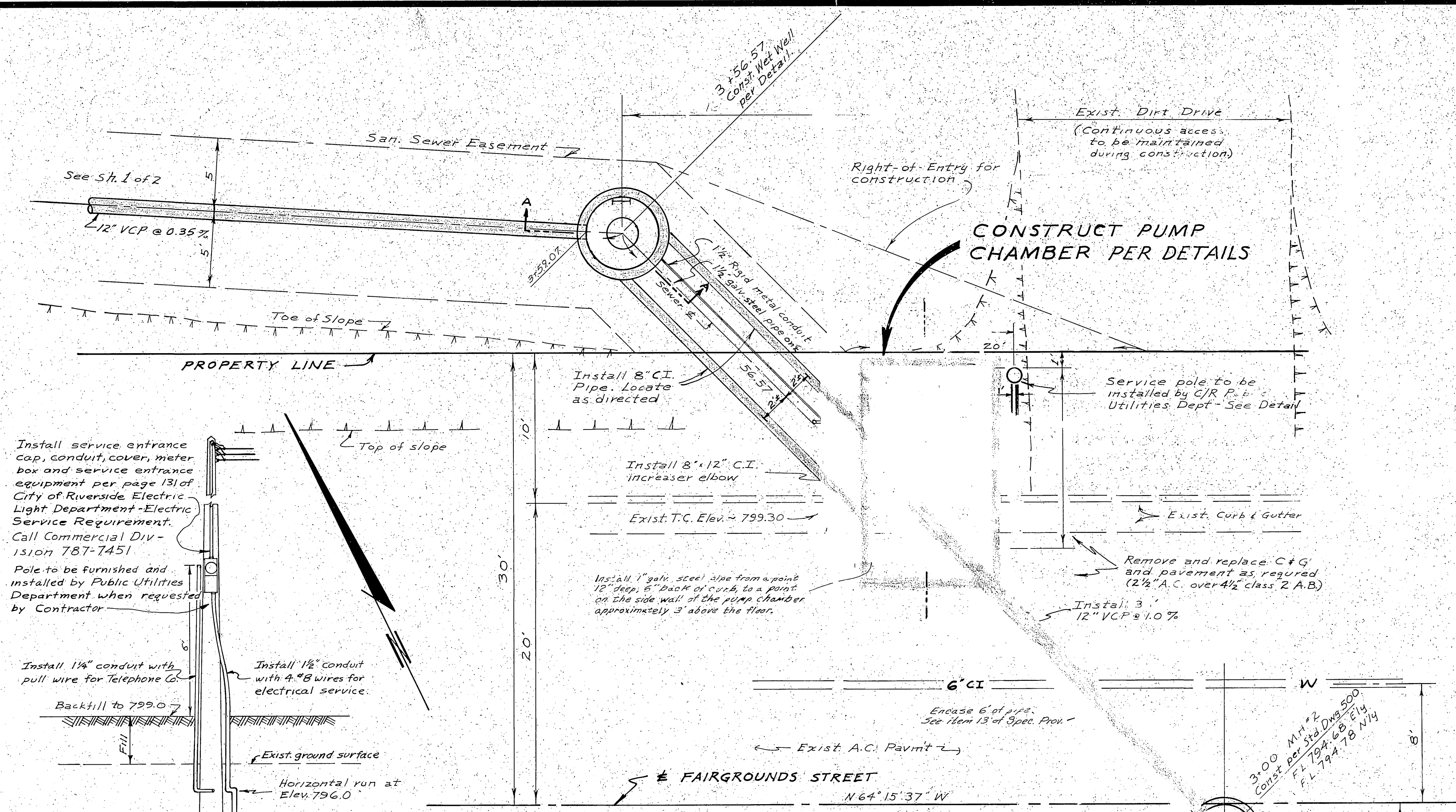
USE ALTERNATE B, PRECUT PUMP CHAMBER, DIM. 14'-0" x 10'-0" WDG. 5/26/67

PROJECT No. 5103

S 651A

2 of 2





### PLAN OF LIFT STATION

Scale 1"=5'

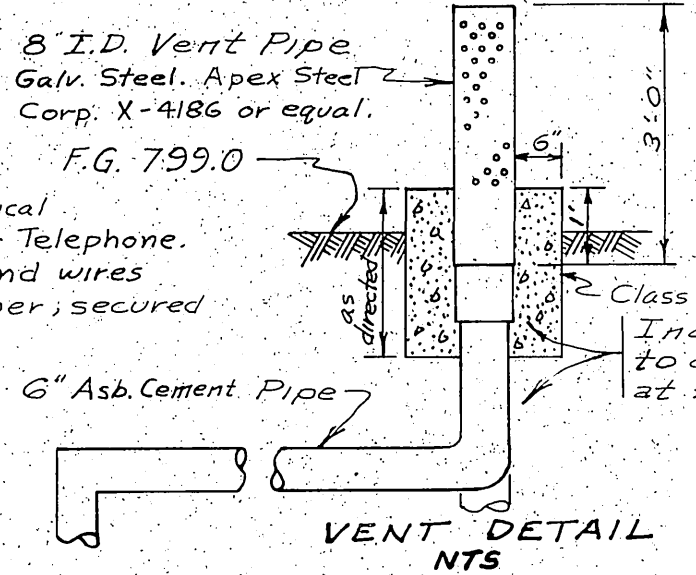
Install service entrance cap, conduit, cover, meter box and service entrance equipment per page 131 of City of Riverside Electric Light Department - Electric Service Requirement. Call Commercial Division 787-7451. Pole to be furnished and installed by Public Utilities Department when requested by Contractor.

Install 1 1/2" conduit with pull wire for telephone Co. Install 1 1/2" conduit with 4 #8 wires for electrical service. Backfill to 799.0. Horizontal run at Elev. 796.0.

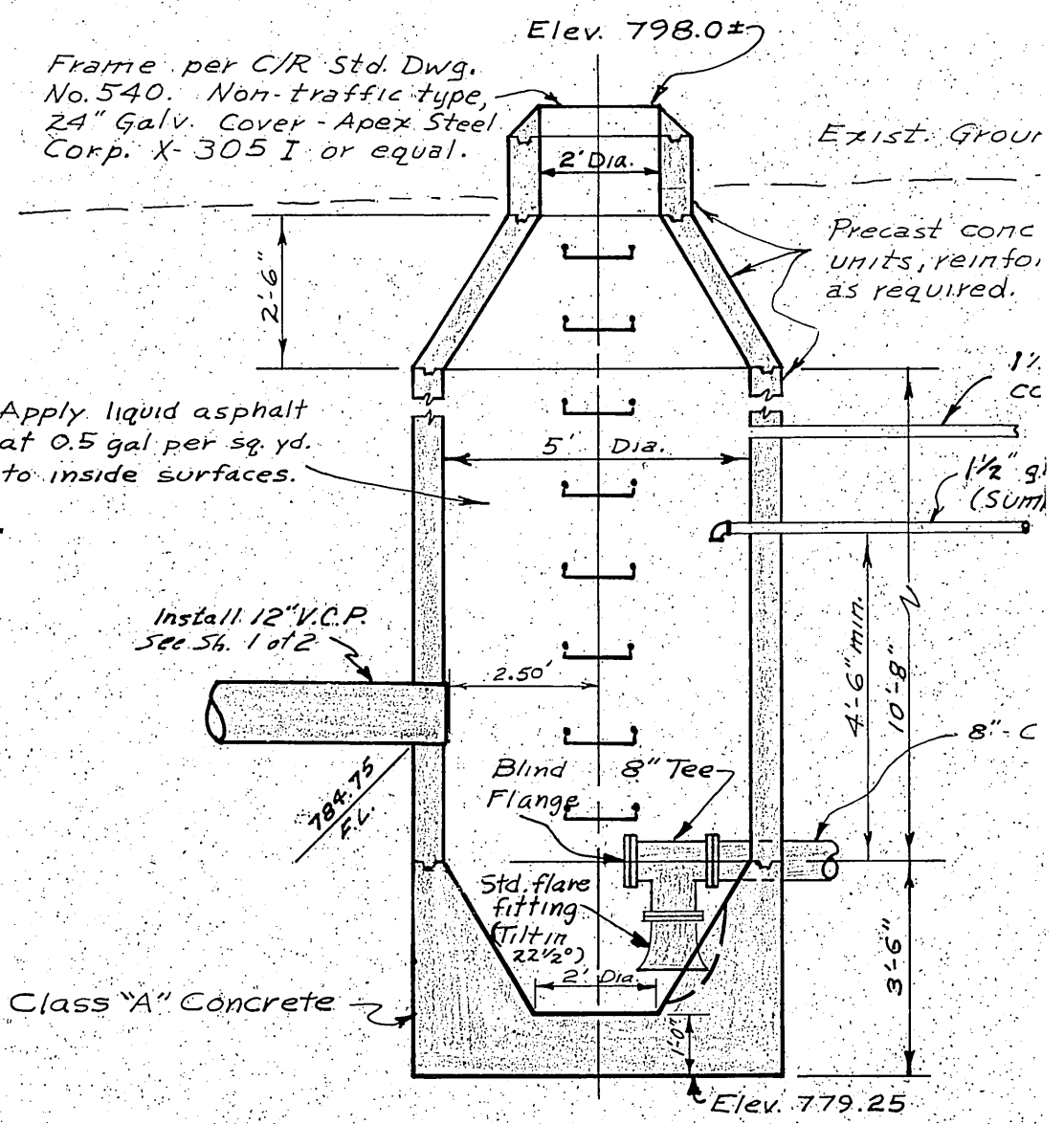
**Electrical**  
Note: Service shall be installed for 2-230 volt 3 phase 5hp motors, a light circuit and an auxiliary service 115 volt circuit in pump chamber.

Mount 4"x8"x 5/8" plywood back board for Telephone Co. use. Elev. 785.0.

**ELECTRICAL FACILITY DETAIL**  
1"=3'

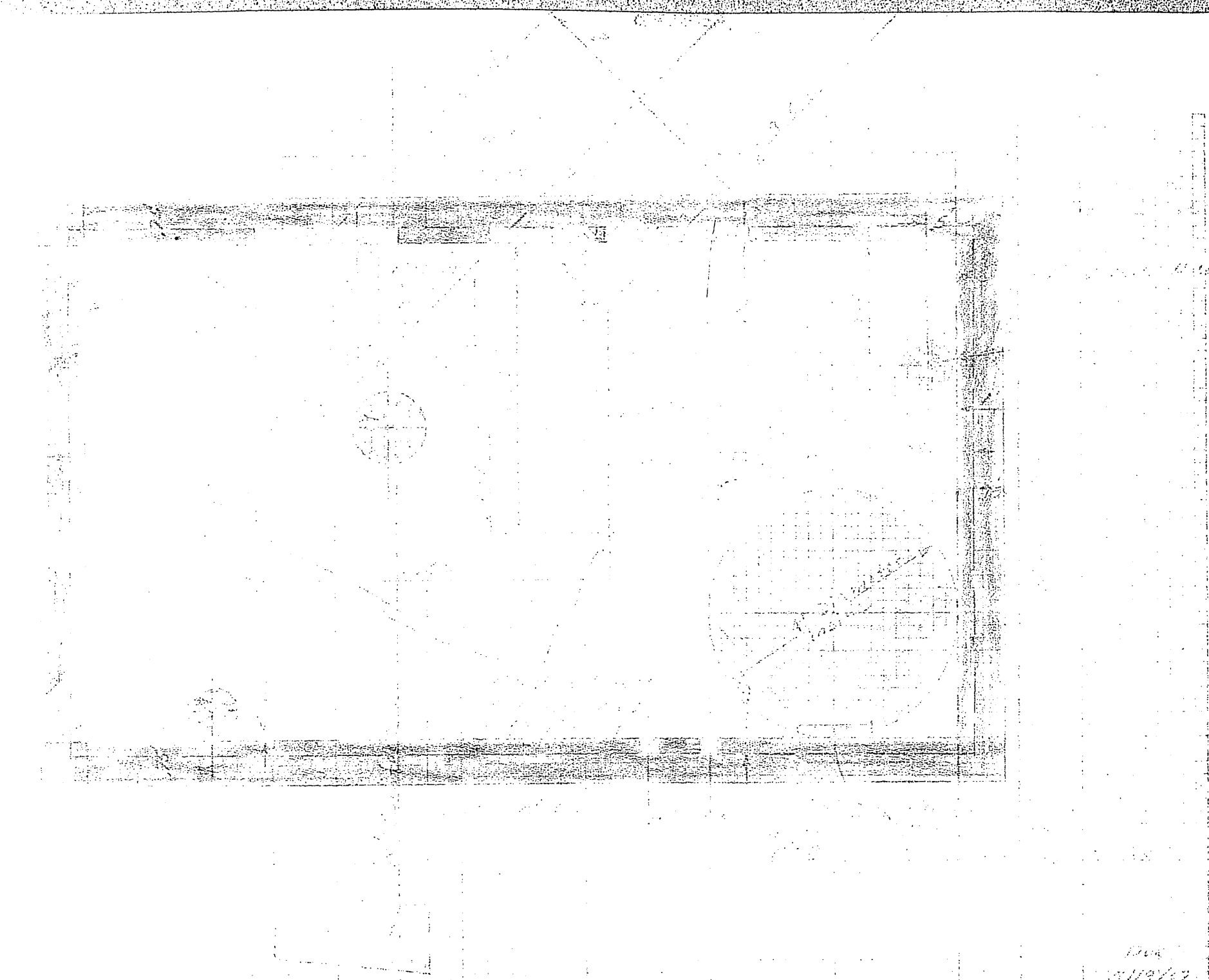
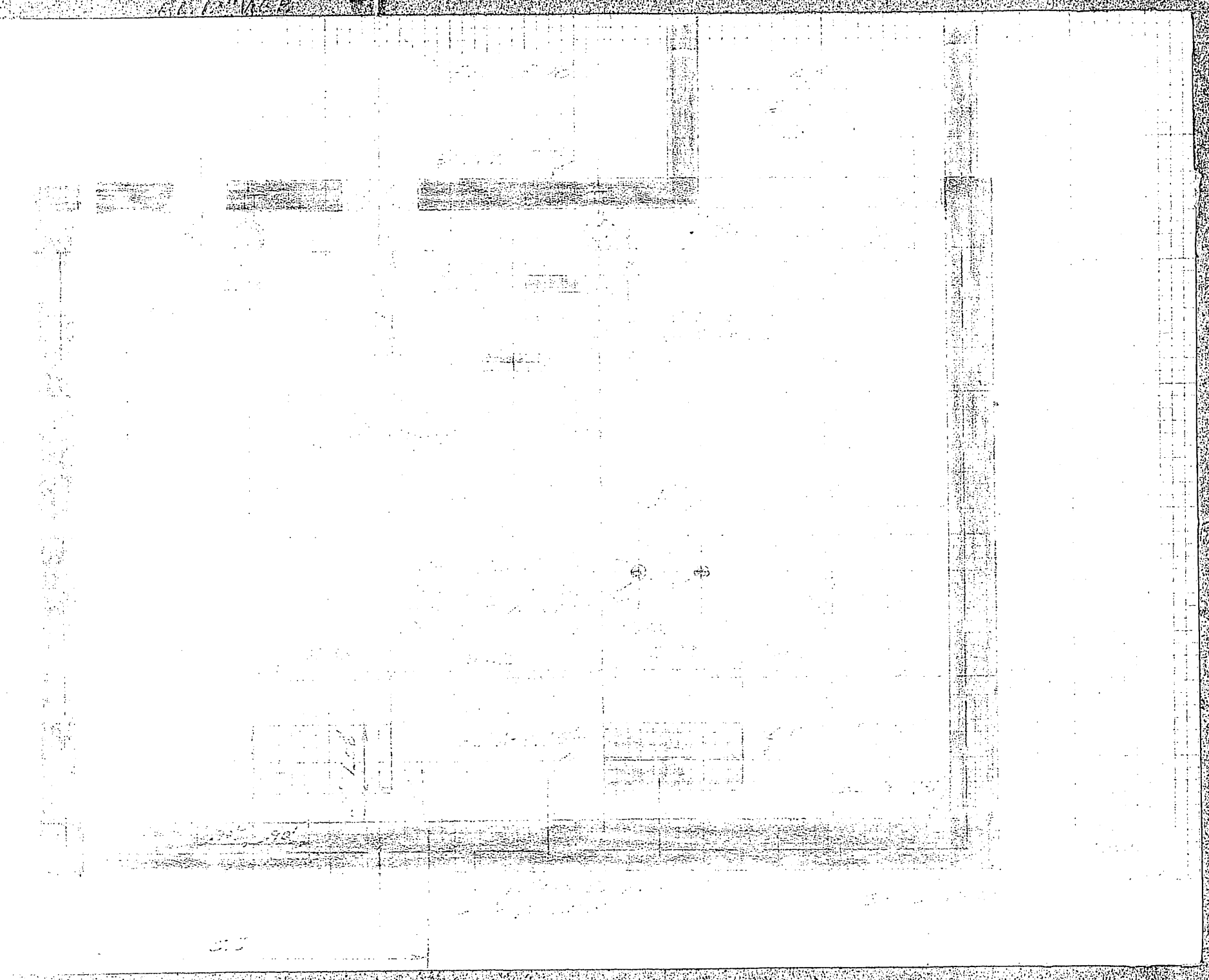


**VENT DETAIL**  
NTS



**SECTION A-A**  
WET WELL

**Bench Mark:**  
Spike & Lead in headwall of bridge culvert, South side of Crestmore Ave. 500' ± East of Redwood Dr. Elev. 796.22.



APPROVED BY  
*H.C. Parker*  
SEWAGE TREATMENT SUPERINTENDENT

CITY OF RIVERSIDE, CALIFORNIA DEPARTMENT OF PUBLIC WORKS		LIFT STATION FAIRGROUNDS ST. SEWER		S-651A
APPROVED BY DATE	APPROVED BY DATE	DESIGNED BY DATE	DRAWN BY DATE	CHECKED BY DATE
General Revision	REVISIONS	APPROVAL	DATE	SCALE: AS SHOWN
WESTERLY FROM FAIRMOUNT BLVD TO WESTERLY SIDE OF SPRINGBROOK STORMWATER TREATMENT ZONING CASES 100' AND 100'			SHEET 2 OF 2	