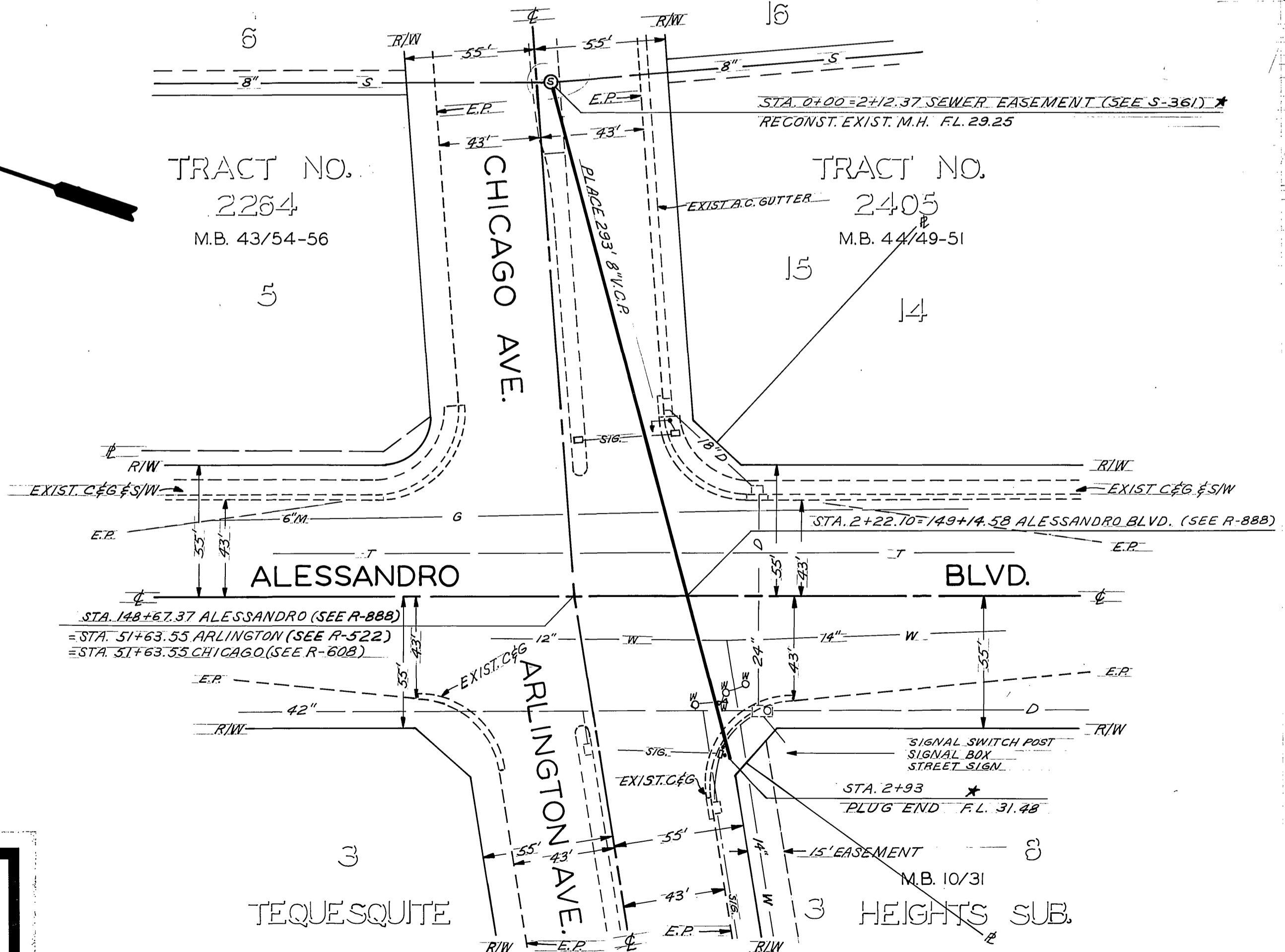
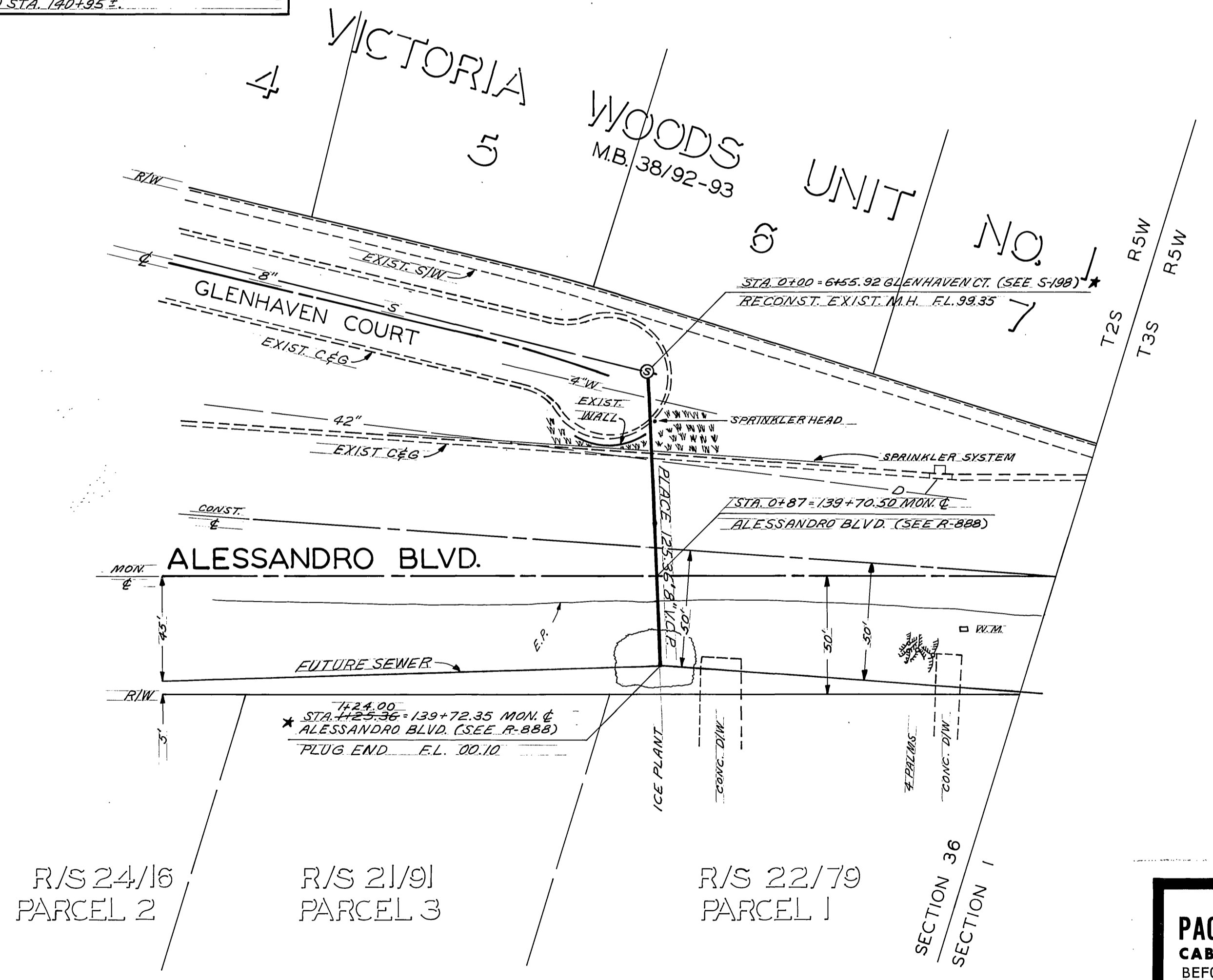


F.B. L1, 42 ELEV. 1111.10
 8. M. NO. 15 COUNTY CHISELED T. 20Y
 CURB @ A.P.E.LY SIDE ALESSANDRO.
 @ STA. 140+95.2

F.B. L1, 43 & F.B. P-6, 49 ELEV. 1136.736
 B.M. 12A NAIL IN CENTER OF SELLY
 CURB RETURN OF CHICAGO & ALESSANDRO.

- GENERAL NOTES:**
- CONTRACTOR SHALL REPLACE ALL CURB AND GUTTER DISPLACED OR DAMAGED BY HIS OPERATIONS.
 - CONTRACTOR SHALL CONTACT ELLIS KINDIG (PARK SUPERINTENDENT) AT 787-7201 AT LEAST 48 HOURS PRIOR TO EXCAVATING AT GLENHAVEN COURT. ANY DAMAGE TO SPRINKLER SYSTEM, CONTROLLERS, OR ELECTRICAL SYSTEM SHALL BE REPAIRED BY THE CONTRACTOR.
 - CONTRACTOR SHALL NOT DEPOSIT PILES OF DIRT ON PLANTED AREAS.
 - NO ADDITIONAL COMPENSATION SHALL BE ALLOWED FOR THE ABOVE ITEMS.



R/S 24/16 PARCEL 2
 R/S 21/91 PARCEL 3
 R/S 22/79 PARCEL 1

**-CAUTION-
 PACIFIC TELEPHONE
 CABLES UNDERGROUND
 BEFORE EXCAVATING**

CALL COLLECT:
 7:30 A.M. to 5 P.M. & Holidays
 After Hours

Orange County	714-633-0811	714-547-6606
Riverside County	714-684-0071	714-547-6606
Inyo County	714-684-0071	714-547-6606
San Bernardino County	714-684-0071	714-547-6606
Los Angeles County	213-621-3111	24 HOUR SERVICE
Ventura County	213-621-3111	24 HOUR SERVICE
San Diego County	714-298-6995	714-232-0027

FOR FREE CABLE LOCATING SERVICE

CITY OF RIVERSIDE, CALIFORNIA DEPARTMENT OF PUBLIC WORKS			ALESSANDRO BLVD. SEWERS		PROJECT NO. 5076
APPROVED BY	BY	DATE	APPROVED BY	DATE	S-662
OFFICE ENGINEER	DR	11/14/66	D. J. [Signature]	11/14/66	SHEET 1 OF 1
PARK DEPARTMENT	DR	11/14/66	DIRECTOR OF PUBLIC WORKS		FILE NO.
TRAFFIC DIVISION					
ASSISTANT CITY ENG.		11/14/66			
DESIGNED BY DCH	DRAWN BY NB	CHECKED BY DCH	DATE 6-1-66	HORIZ. SCALE: 1" = 40'	VERT. SCALE: 1" = 4'

* AS BUILT 9-30-66 9044