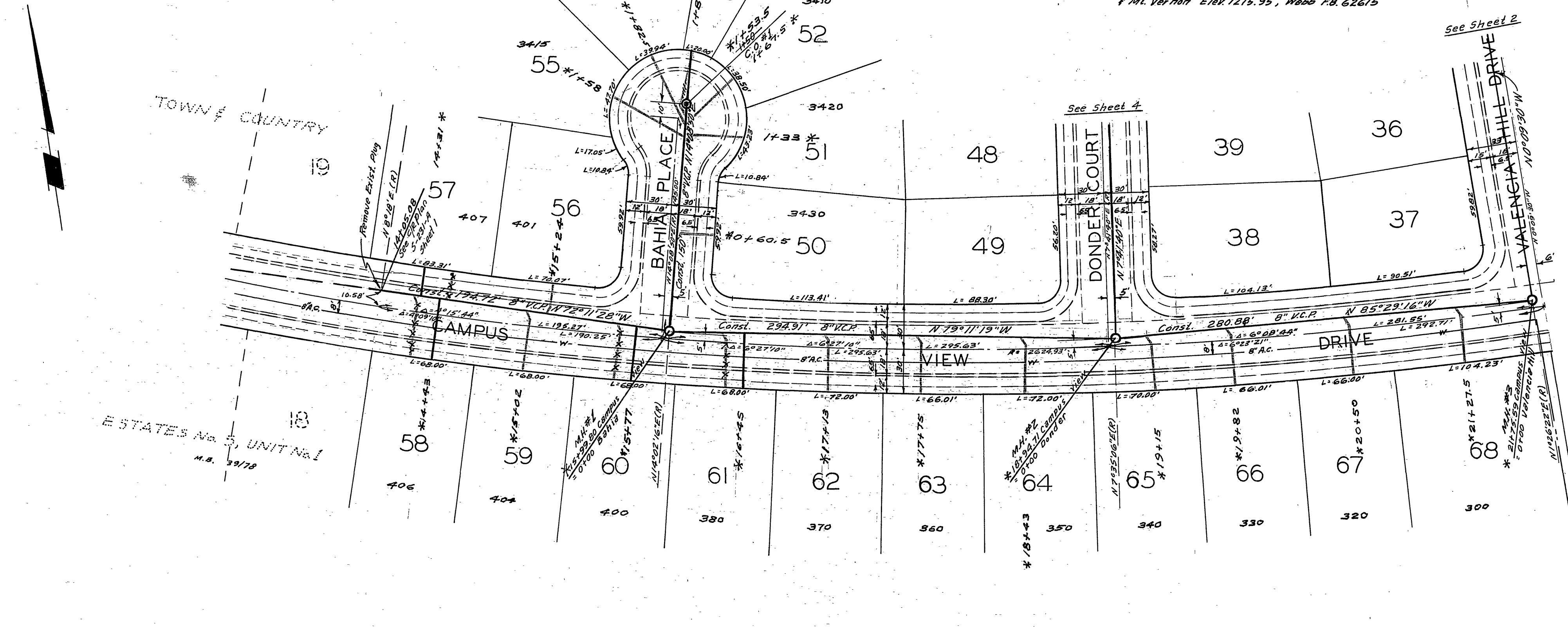


BENCH MARK:
 Top capped Man Intersection Blaine St.
 + Mt. Vernon Elev. 1215.95, Wobs. FB. 62615



- GENERAL NOTES**
- Construction shall be in accordance with the City of Riverside, Department of Public Works, Standard Specifications No. 451 and Standard Drawings.
 - It shall be the responsibility of the contractor to cover the right of way in accordance with the provisions of the law as it affects such utility including irrigation, drainage, and other utilities and at no cost to the City.
 - Joints in vitrified clay pipe sewers shall conform to ASTM Standard C-425-60T, or the latest revision thereof.
 - Pipe shall be bedded per Case 1, Standard Drawing No. 452, unless otherwise specified on plan.
 - Location of wyes and laterals to be obtained in the field.
 - All stubs and laterals to be constructed in accordance with Standard Drawing No. 502, Shown Shown as plugged and capped.
 - Prior to construction of sewer, Contractor is to expose existing sewer and contact Engineer for verification of existing elevations.

QUANTITY ESTIMATE

8" Vitrified Clay Pipe	2,565	L.F.
4" Vitrified Clay Pipe	2,344	L.F.
4" X 8" Wye	68	Eq.
Manhole Standard No. 500	9	Eq.
Cleanout Standard No. 560	2	Eq.
Pavement Replacement	450	S.F.

*AS BUILT 10-3-67 K.S.P.

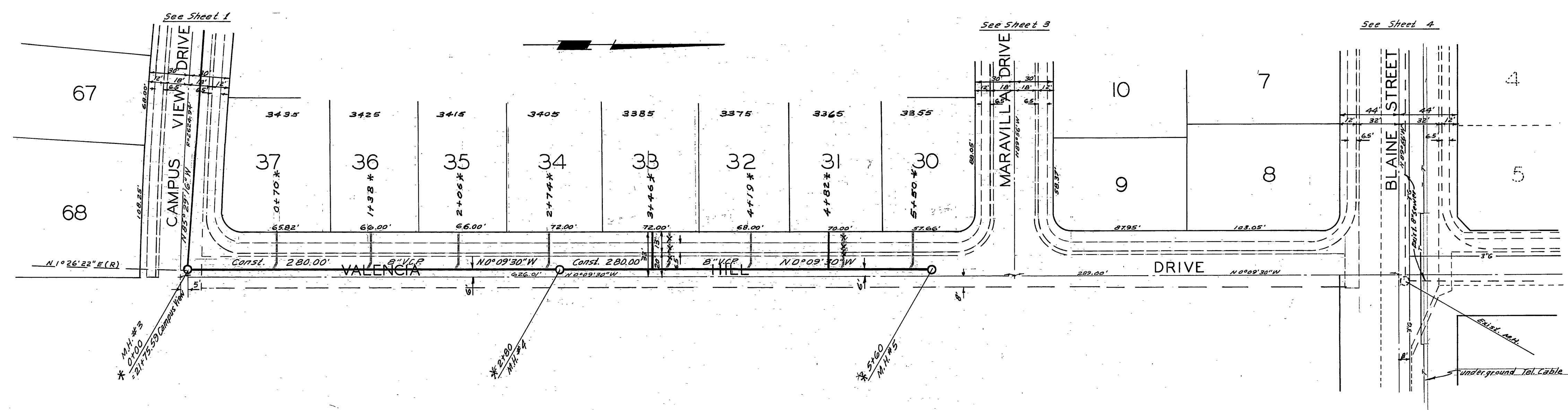
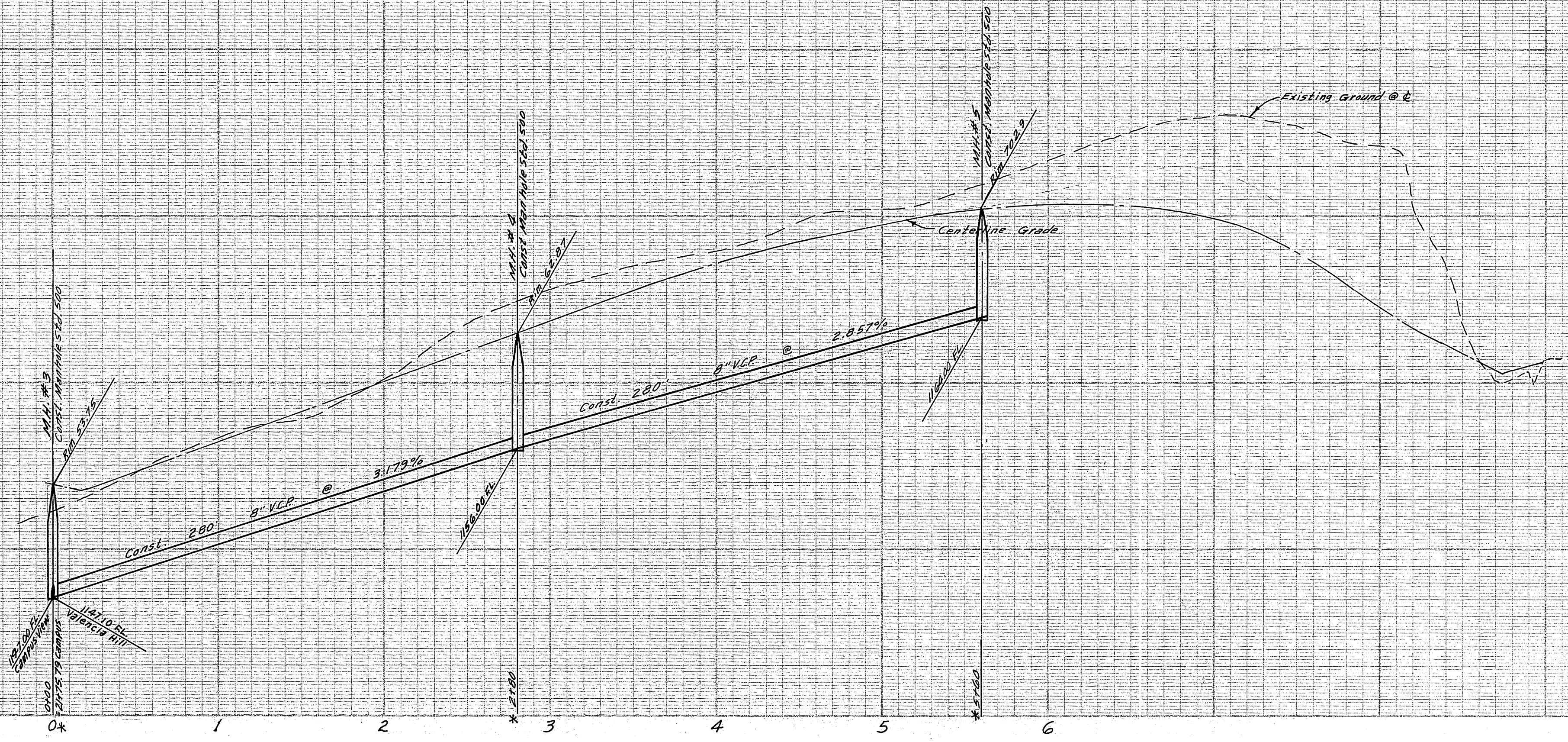
The contractor shall be responsible for the location and location of any underground utility lines or structures shown on these plans are obtained by a search of the applicable records. In the best of our knowledge, those who are existing utilities except as shown on these plans.

The contractor is responsible for the location and location of any underground utility lines or structures shown on these plans are obtained by a search of the applicable records. In the best of our knowledge, those who are existing utilities except as shown on these plans.

ALBERT A. WEBB ASSOCIATES CIVIL ENGINEERS RIVERSIDE, CALIFORNIA APPROVED BY: <i>[Signature]</i> DATE 5/10/66 R.E. No. 9876	MARK: _____ REVISIONS: _____ APPR. DATE: _____ DESIGNED BY: _____ DRAWN BY: <i>BEL</i> CHECKED BY: <i>KEG</i>	CITY OF RIVERSIDE, CALIFORNIA DEPARTMENT OF PUBLIC WORKS APPROVED BY: <i>[Signature]</i> DATE 6/12/66 OFFICE ENGINEER PARK DEPARTMENT TRAFFIC DIVISION ASSISTANT CITY ENG.	APPROVED BY: <i>[Signature]</i> DATE 6-14-67 DIRECTOR OF PUBLIC WORKS	SEWER PLAN & PROFILE CAMPUS VIEW DRIVE BAHIA PLACE TRACT NO. 2881	PROJECT NO. 5-669 SHEET 1 OF 4 FILE NO. 66-84-B
		W.O. 66-84 FOR: <i>[Signature]</i> F.B. 626		HORIZ. SCALE: 1" = 50' VERT. SCALE: 1" = 5'	

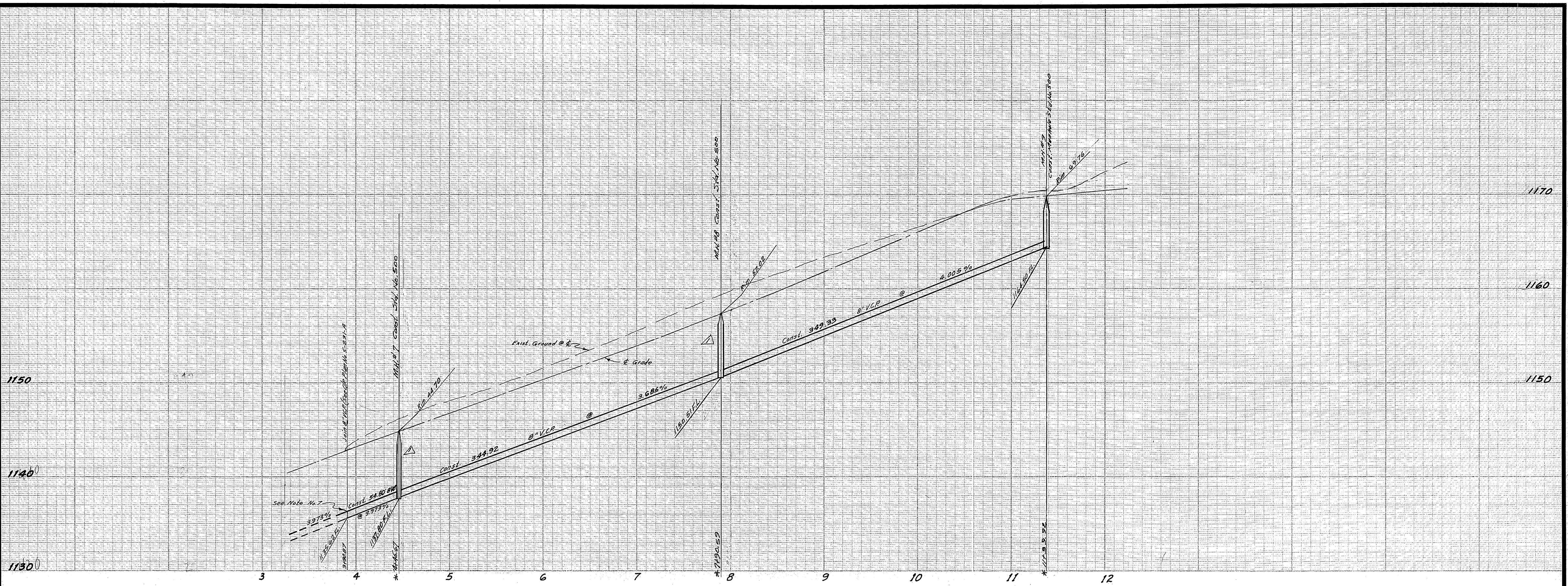
1150
1140

1170
1160

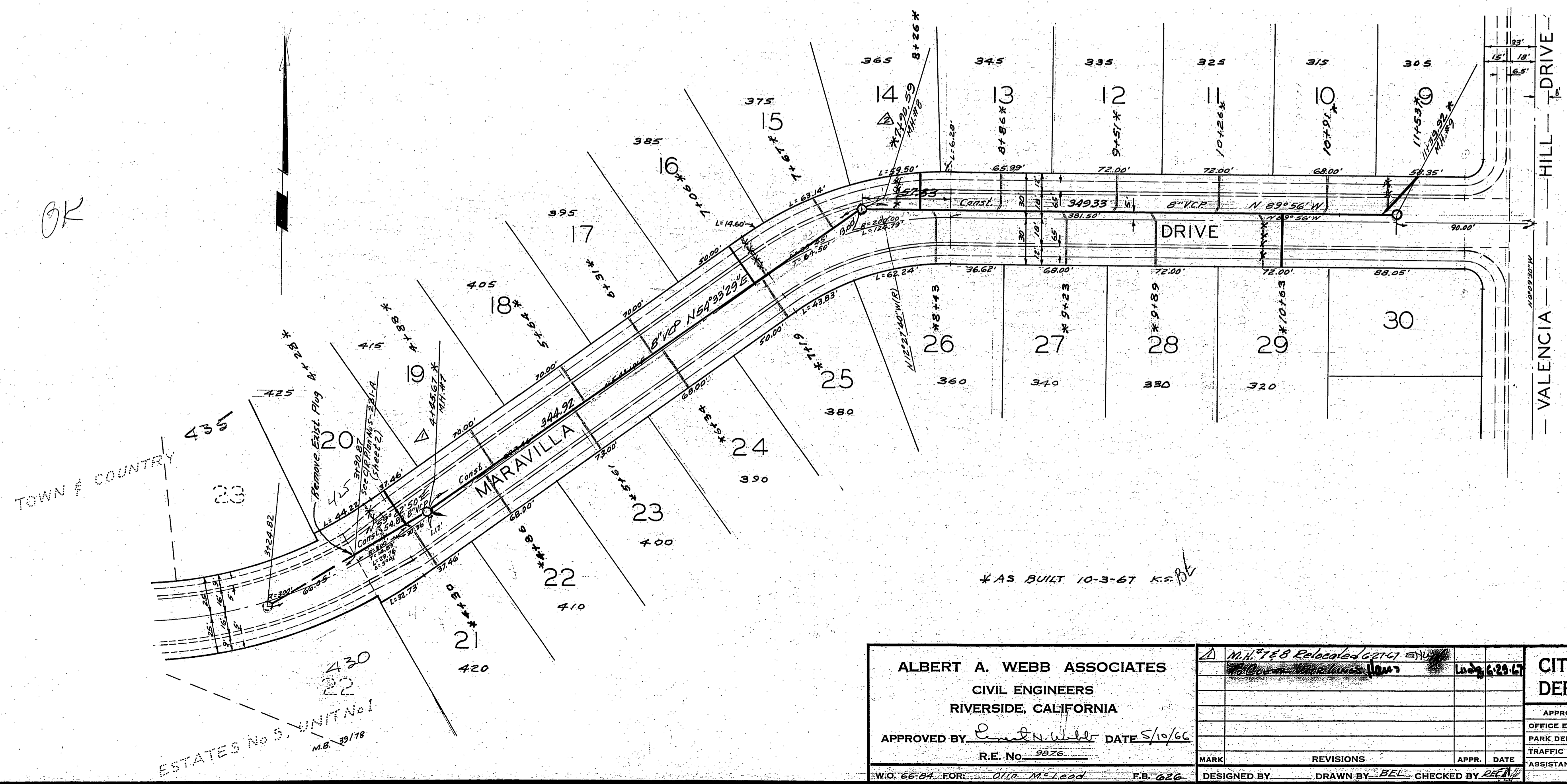


*AS BUILT 10-3-67 K.S.F.

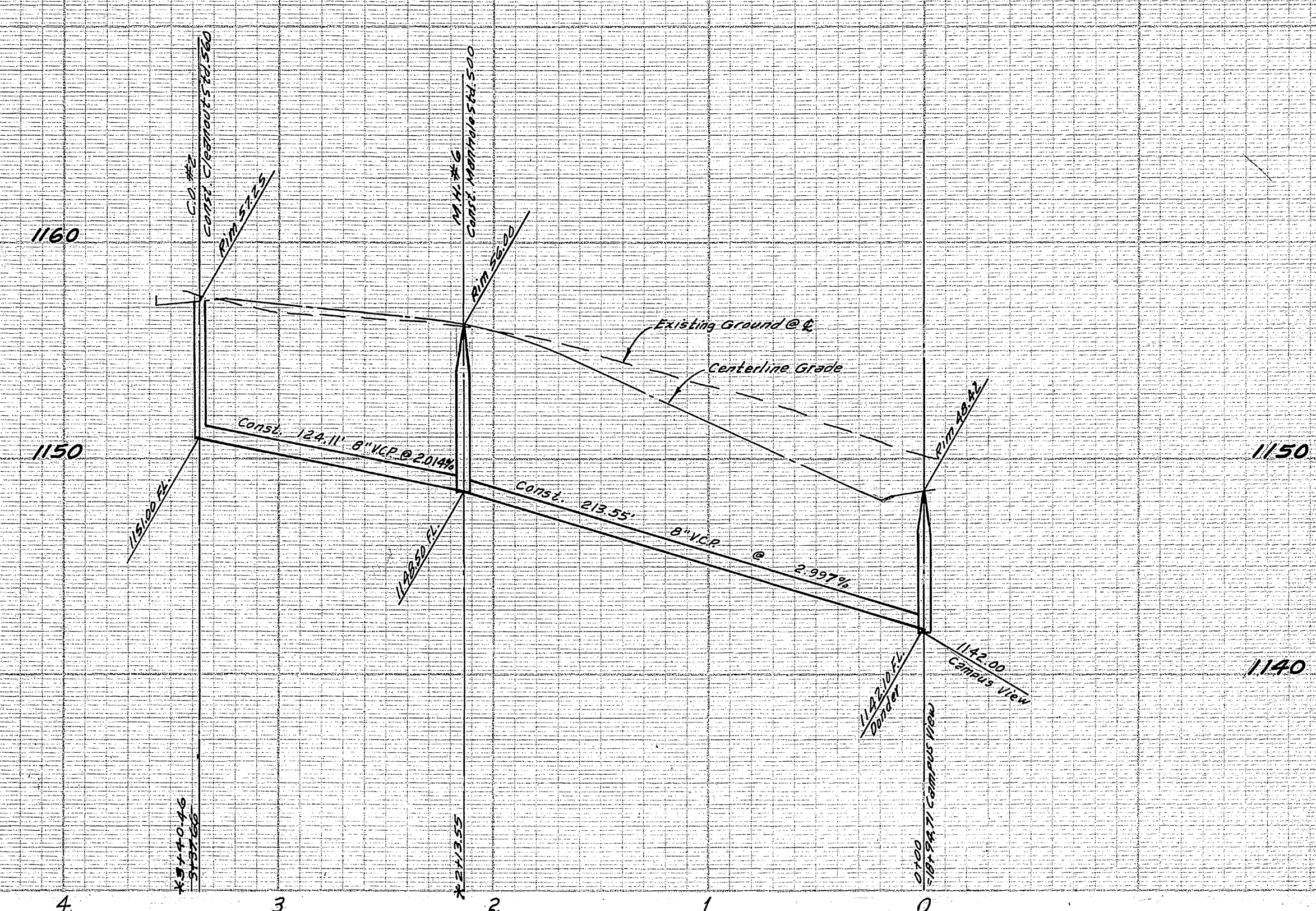
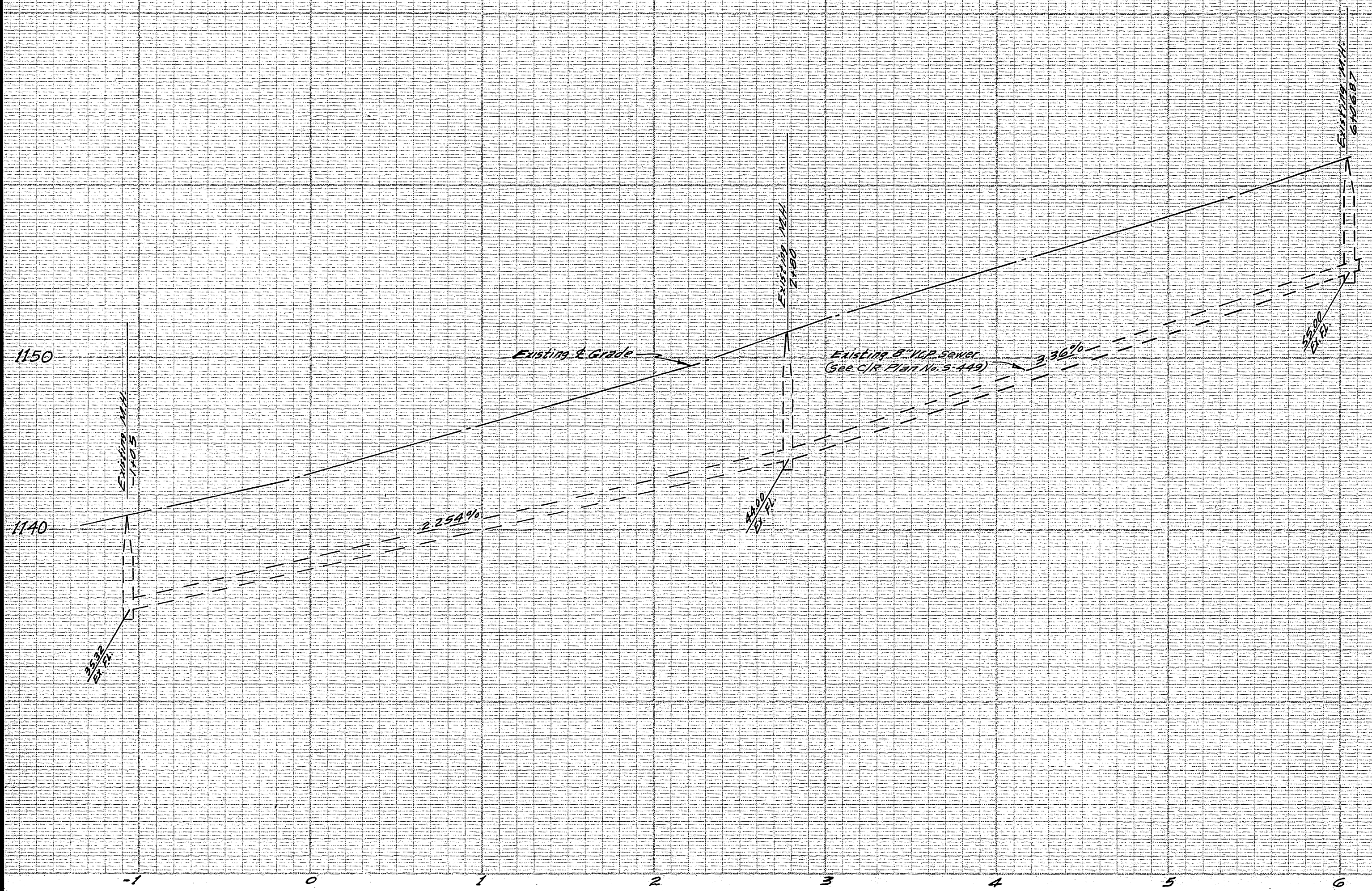
ALBERT A. WEBB ASSOCIATES CIVIL ENGINEERS RIVERSIDE, CALIFORNIA APPROVED BY: <i>R. Webb</i> DATE 5/19/66 R.E. No. 2876	CITY OF RIVERSIDE, CALIFORNIA DEPARTMENT OF PUBLIC WORKS APPROVED BY: <i>M. B. ...</i> DATE 6-12-67 OFFICE ENGINEER PARK DEPARTMENT TRAFFIC DIVISION ASSISTANT CITY ENG.	SEWER PLAN & PROFILE VALENCIA HILL DRIVE TRACT NO. 2881		PROJECT NO. S-669
		HORIZ. SCALE: 1" = 50' VERT. SCALE: 1" = 5'		SHEET 2 OF 4 FILE NO. 66-84-B
W.O. 66-84 FOR: <i>DIV. M.C. 223</i>	F.B. 626	DESIGNED BY: <i>BEL</i>	DRAWN BY: <i>BEL</i>	CHECKED BY: <i>RECC</i>



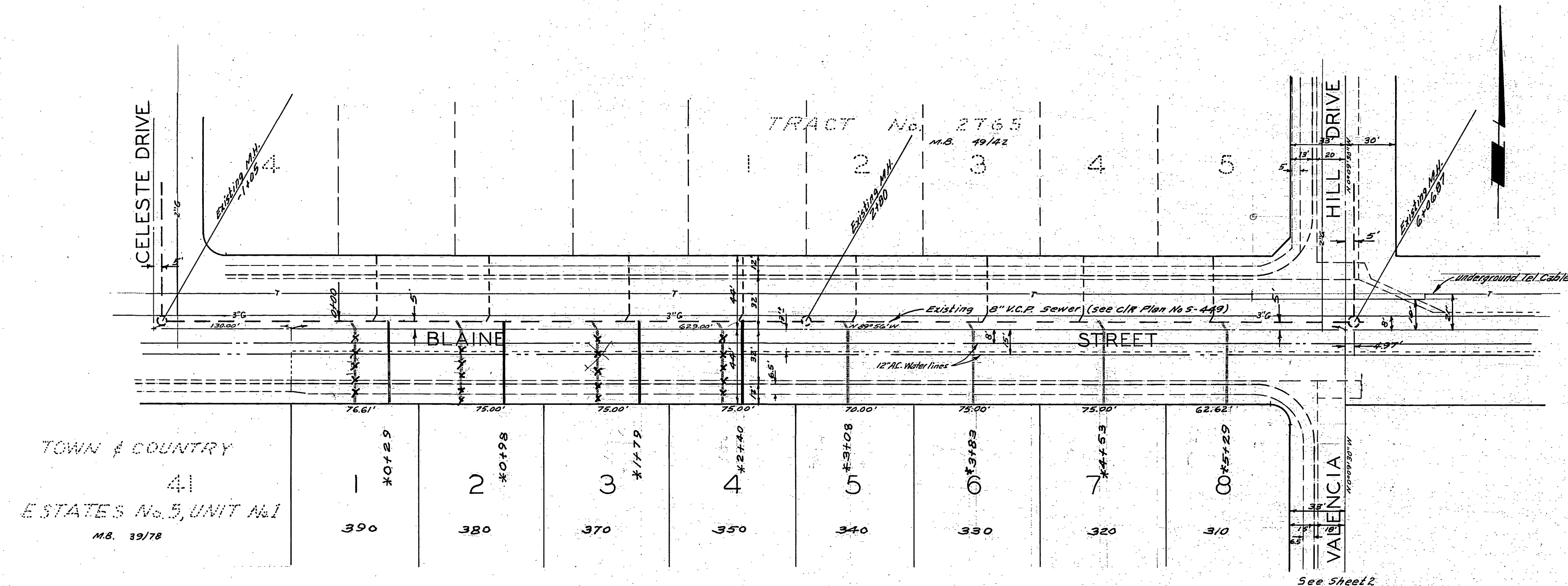
BENCH MARK:
 1/2" capped Man Intersection Blaine St.
 1/4 MI. Vernier, Elev. 1218.95, Webb FB. 626/5



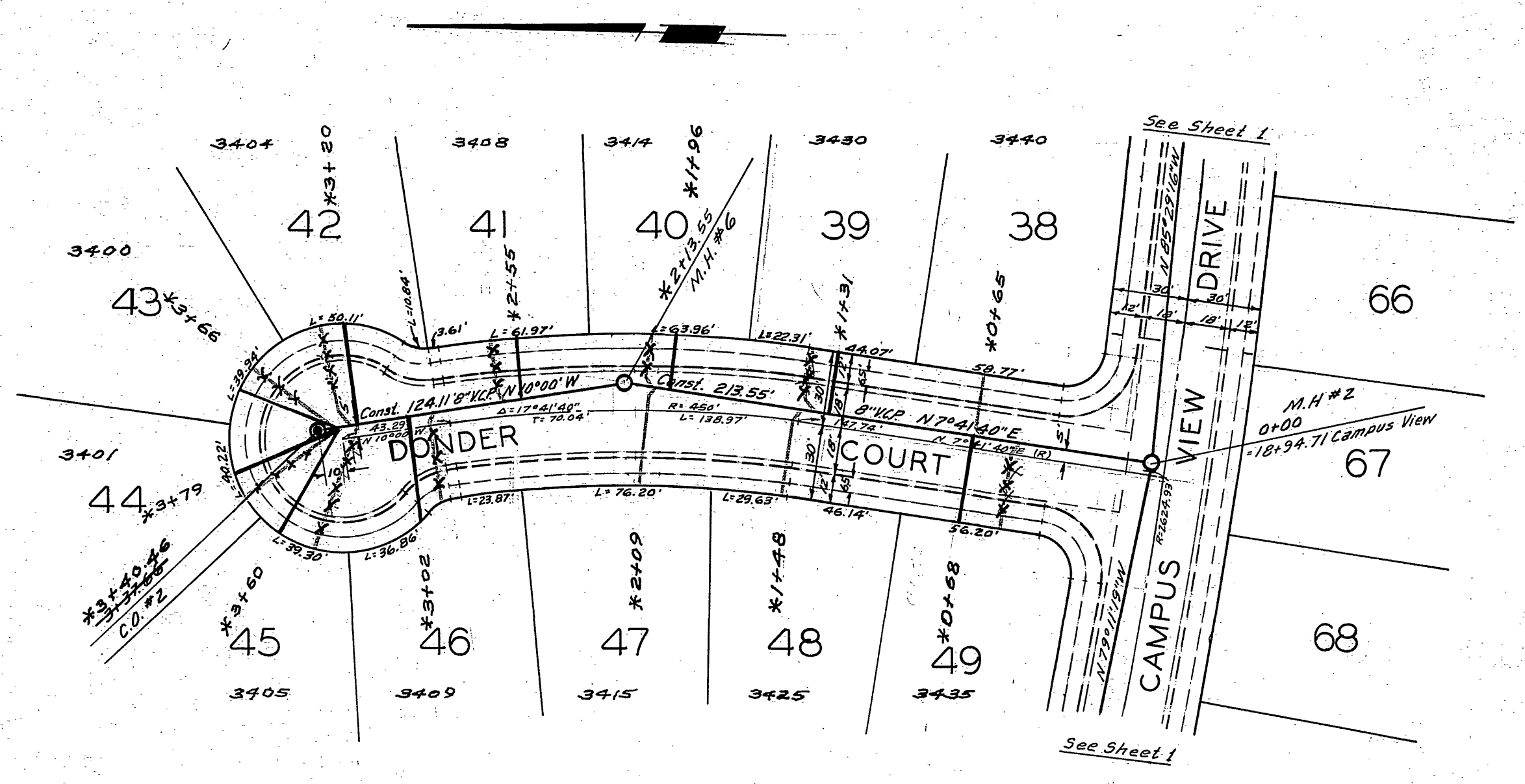
ALBERT A. WEBB ASSOCIATES CIVIL ENGINEERS RIVERSIDE, CALIFORNIA APPROVED BY: <i>[Signature]</i> DATE 5/10/66 R.E. No. 9876	CITY OF RIVERSIDE, CALIFORNIA DEPARTMENT OF PUBLIC WORKS APPROVED BY: <i>[Signature]</i> DATE 6-14-67 OFFICE ENGINEER PARK DEPARTMENT TRAFFIC DIVISION ASSISTANT CITY ENGINEER	SEWER PLAN & PROFILE MARAVILLA DRIVE TRACT NO. 2881		PROJECT NO. S-669
		HORIZ. SCALE: 1" = 50' VERT. SCALE: 1" = 5'		SHEET 3 OF 4 FILE NO. 66-84-B



BENCH MARK:
 Top capped Man Intersection Blaine St.
 & Mt. Vernon. E/OV 12.5.95, W&B FB 626/5



TOWN & COUNTRY
 41
 E STATES No. 5, UNIT No. 1
 M.S. 39/78



*AS BUILT 10-3-67 (C.S. RE)

ALBERT A. WEBB ASSOCIATES CIVIL ENGINEERS RIVERSIDE, CALIFORNIA APPROVED BY: <i>[Signature]</i> DATE 5/10/68 R.E. No. 9876	CITY OF RIVERSIDE, CALIFORNIA DEPARTMENT OF PUBLIC WORKS APPROVED BY: <i>[Signature]</i> DATE 6-14-67 OFFICE ENGINEER: <i>[Signature]</i> DATE 7/26/67 PARK DEPARTMENT: <i>[Signature]</i> TRAFFIC DIVISION: <i>[Signature]</i> ASSISTANT CITY ENG. <i>[Signature]</i>	SEWER PLAN & PROFILE BLAINE STREET DONDER COURT TRACT NO. 2881 HORIZ. SCALE: 1" = 50' VERT. SCALE: 1" = 5'	PROJECT NO. 5-669
			SHEET 4 OF 4 FILE NO. 66-84-B
W.O. 66-84 FOR: <i>[Signature]</i> M.S. Lead F.B. 626	DESIGNED BY: <i>[Signature]</i> DRAWN BY: <i>[Signature]</i> CHECKED BY: <i>[Signature]</i>		