

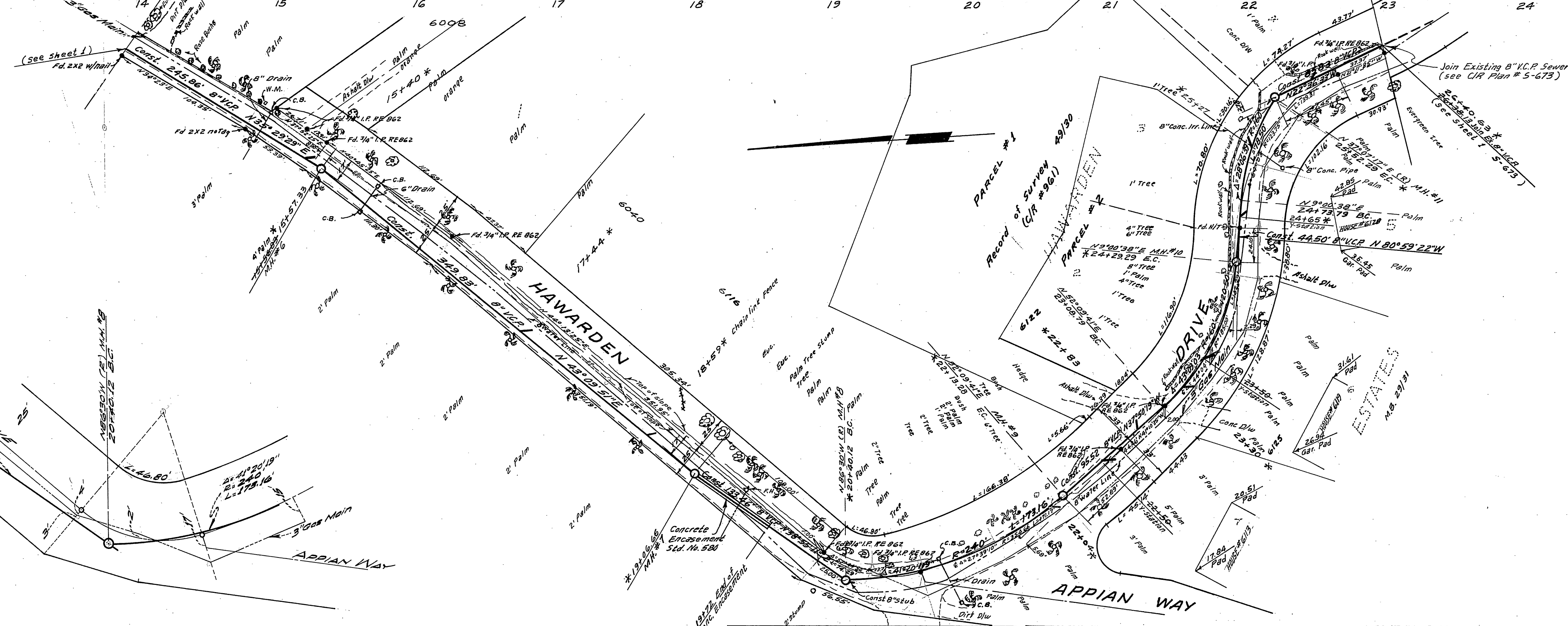
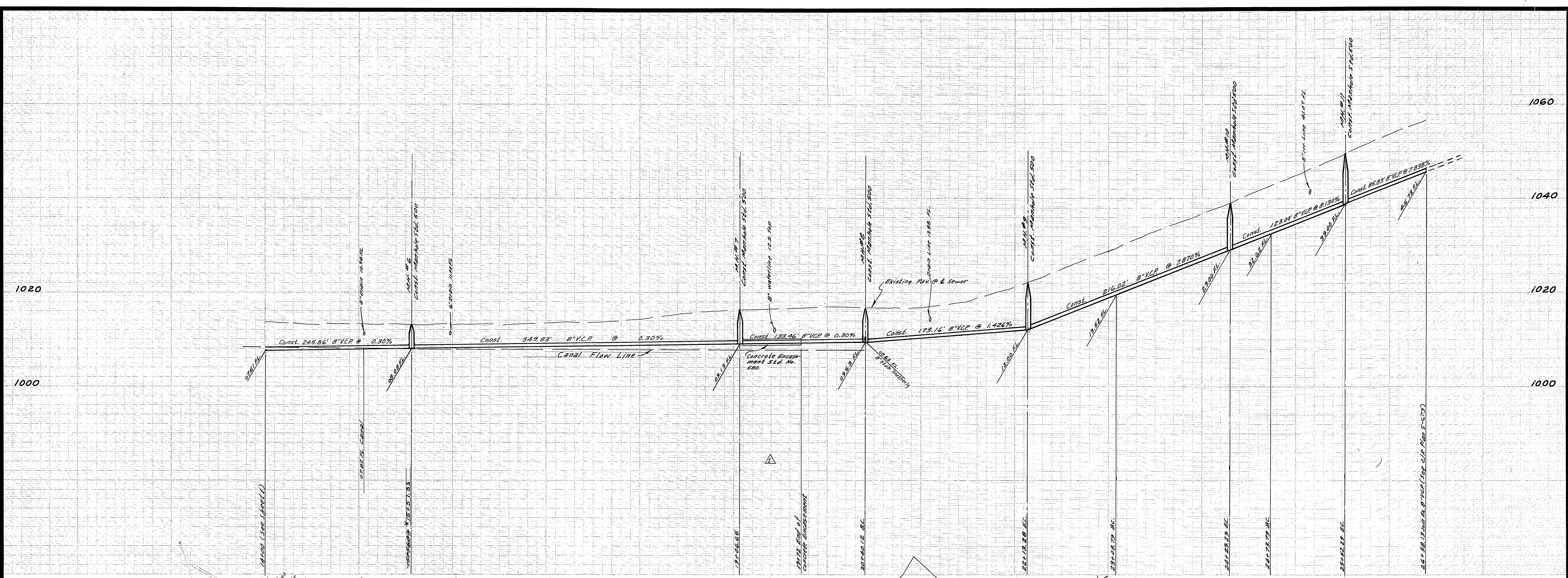
QUANTITY ESTIMATE

Manhole Standard No. 500	11 Ea.
8" Vitrified Clay Pipe	2,440 L.F.
Pavement Replacement	6,534 S.F.
Concrete Encasement Std. No. 500	65 L.F.
4" X 8" Wyes	8 Ea.

ALBERT A. WEBB ASSOCIATES CIVIL ENGINEERS RIVERSIDE, CALIFORNIA APPROVED BY <i>[Signature]</i> DATE 6/2/66 R.E. No. 9876	CITY OF RIVERSIDE, CALIFORNIA DEPARTMENT OF PUBLIC WORKS APPROVED BY <i>[Signature]</i> DATE 10/15/65 OFFICE ENGINEER PARK DEPARTMENT TRAFFIC DIVISION ASSISTANT CITY ENG.	SEWER PLAN & PROFILE TRACT 3269 SEWER EXTENSION From Hawarden Drive to Arlington Ave. to 500' S. of Anno St. SEWER EX. 3269-1	INDEXED <input checked="" type="checkbox"/> MD PROJECT NO.
			SHEET 1 OF 2 FILE NO. 65-9-B

W.O. 65-9 FOR: City of Riverside F.B. 631 DESIGNED BY B.E.C. DRAWN BY B.E.L. CHECKED BY

- Indexed - 10-3-66 BBS



BENCH MARK:
 Elev. 1013.16, R.R. spike RR. NW. Cor. Anna + Hawarden
 C/P. FB. 70/27, Webb FB. 63/15

SPECIAL NOTE:
 The locations shown by station are the upper limit for a final location between the down stream property line and the station shown. The contractor shall contact each resident owner to determine the most suitable location for each wye.

DETAIL OF GAS LINE LOCATION AT MH #B
 SCALE 1"=40'

WAS BUILT 8-24-67 KR

ALBERT A. WEBB ASSOCIATES CIVIL ENGINEERS RIVERSIDE, CALIFORNIA APPROVED BY: <i>[Signature]</i> DATE: 6/1/66 R.E. No. 2976 W.O. 65-9 FOR: City of Riverside F.B. 63/	CITY OF RIVERSIDE, CALIFORNIA DEPARTMENT OF PUBLIC WORKS APPROVED BY: <i>[Signature]</i> DATE: 7/15/66 OFFICE ENGINEER: <i>[Signature]</i> DATE: 7/15/66 PARK DEPARTMENT: <i>[Signature]</i> DATE: 7/15/66 TRAFFIC DIVISION: <i>[Signature]</i> DATE: 7/15/66 ASSISTANT CITY ENGINEER: <i>[Signature]</i> DATE: 7/15/66	SEWER PLAN & PROFILE TRACT 3269 SEWER EXTENSION Hawarden Drive from Arlington Ave. to 500' S. of Anna St. DATE: 10-13-66 HORIZ. SCALE: 1" = 50' VERT. SCALE: 1" = 10'	PROJECT NO. S-672 SHEET 2 OF 2 FILE NO. 65-9-B
		DESIGNED BY: <i>[Signature]</i> DRAWN BY: <i>[Signature]</i> CHECKED BY: <i>[Signature]</i>	