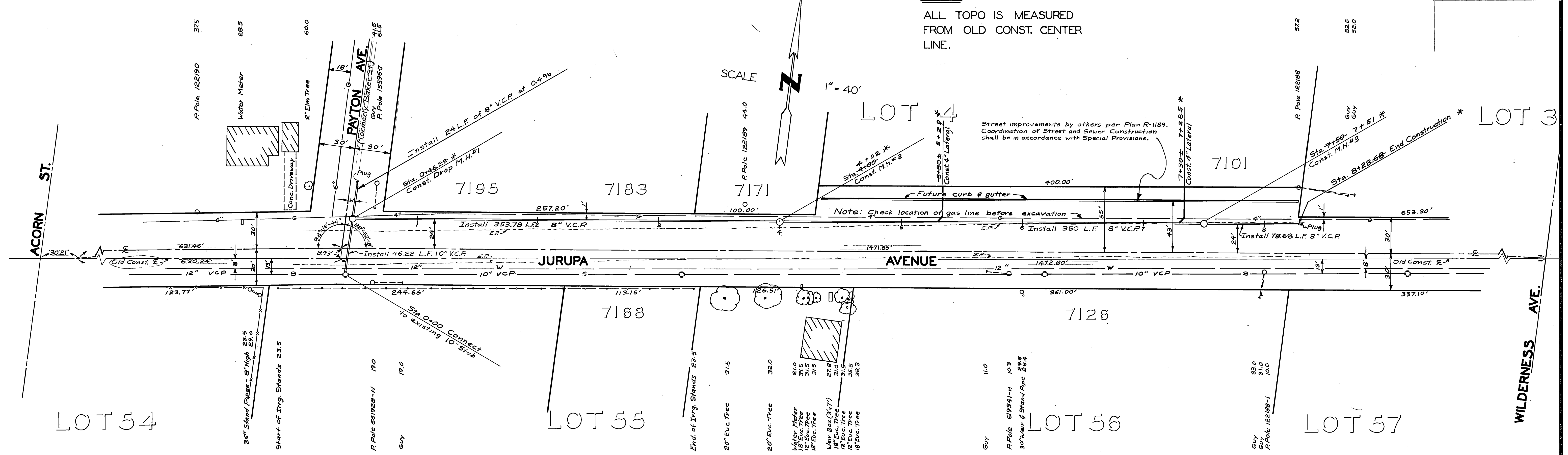
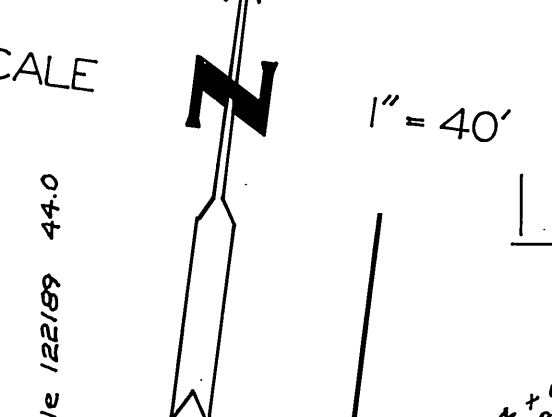


MC CLASKEY

BENCH MARK
60' Spike in Pole #12663-J
N'y side of Jurupa 300' ±
W'y of Wilderness, Elev. 771.65

NOTE:
ALL TOPO IS MEASURED
FROM OLD CONST. CENTER
LINE.



LOT 54

LOT 55

LOT 56

LOT 57

TRACT

References:
File M.P. -1-667
Plan R-258

*AS BUILT 7-7-67 K.S.

REF: FB714/65-72 — FB.645/71-78

CITY OF RIVERSIDE, CALIFORNIA DEPARTMENT OF PUBLIC WORKS		JURUPA AVENUE SEWER EXTENSION EAST OF ACORN		PROJECT NO. 5105 S-674
APPROVED BY	BY	DATE	APPROVED BY	
OFFICE ENGINEER	[Signature]	1-3-77	[Signature]	
PARK DEPARTMENT			DIRECTOR OF PUBLIC WORKS	
TRAFFIC DIVISION				
ASSISTANT CITY ENG.			DATE 2-2-67	
DESIGNED BY [Signature]	DRAWN BY D.C.K.	CHECKED BY [Signature]	HORIZ. SCALE: 1" = 40'	VERT. SCALE: 1" = 4'
			FILE NO.	