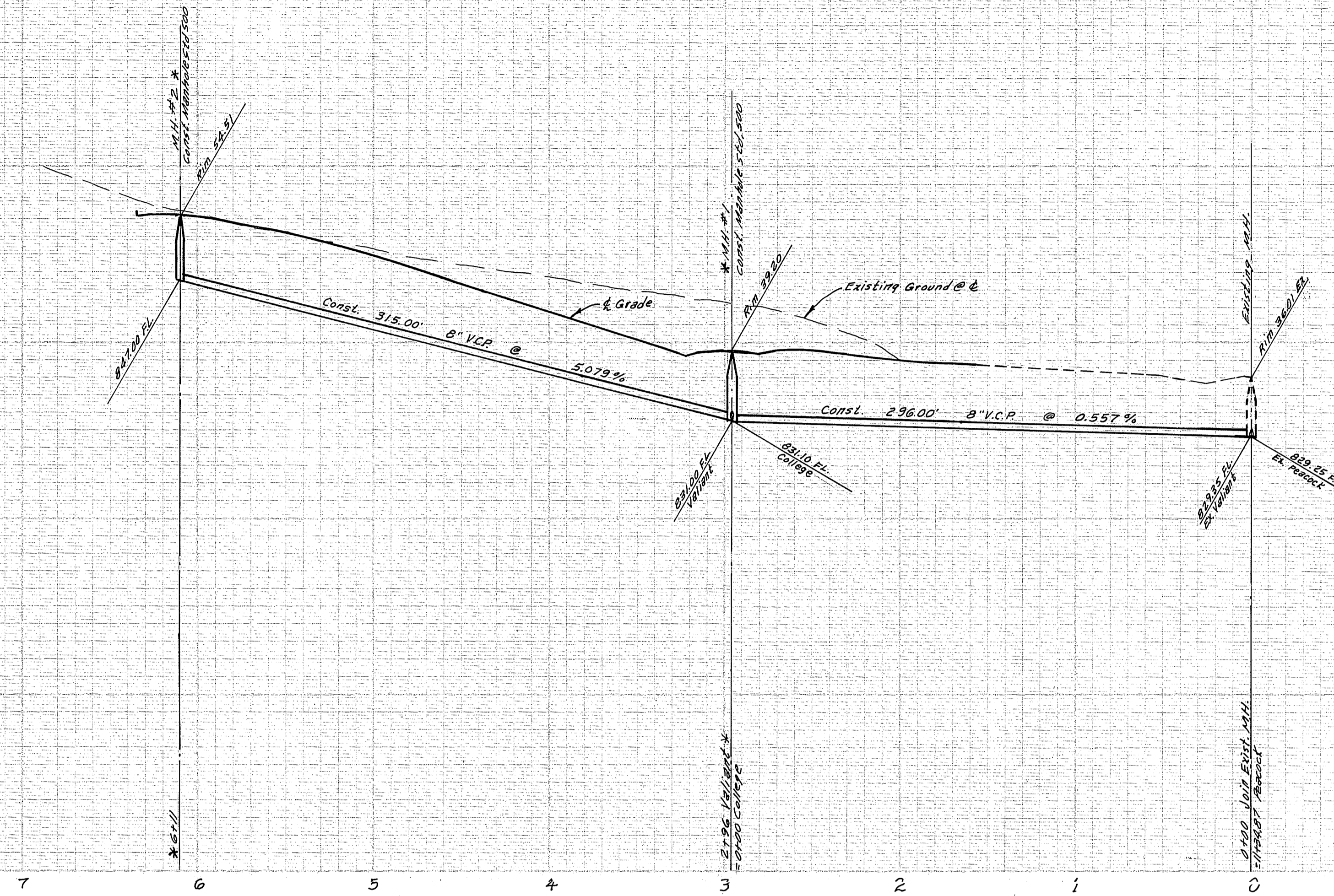


860

840

840

820



Bench Mark: Webb F.B. 542/63  
 Elev. 864.04, Chiseled "X" on top of curb  
 south side of Sierra Glen 140' West of  
 intersection Sierra Glen & Peacock.

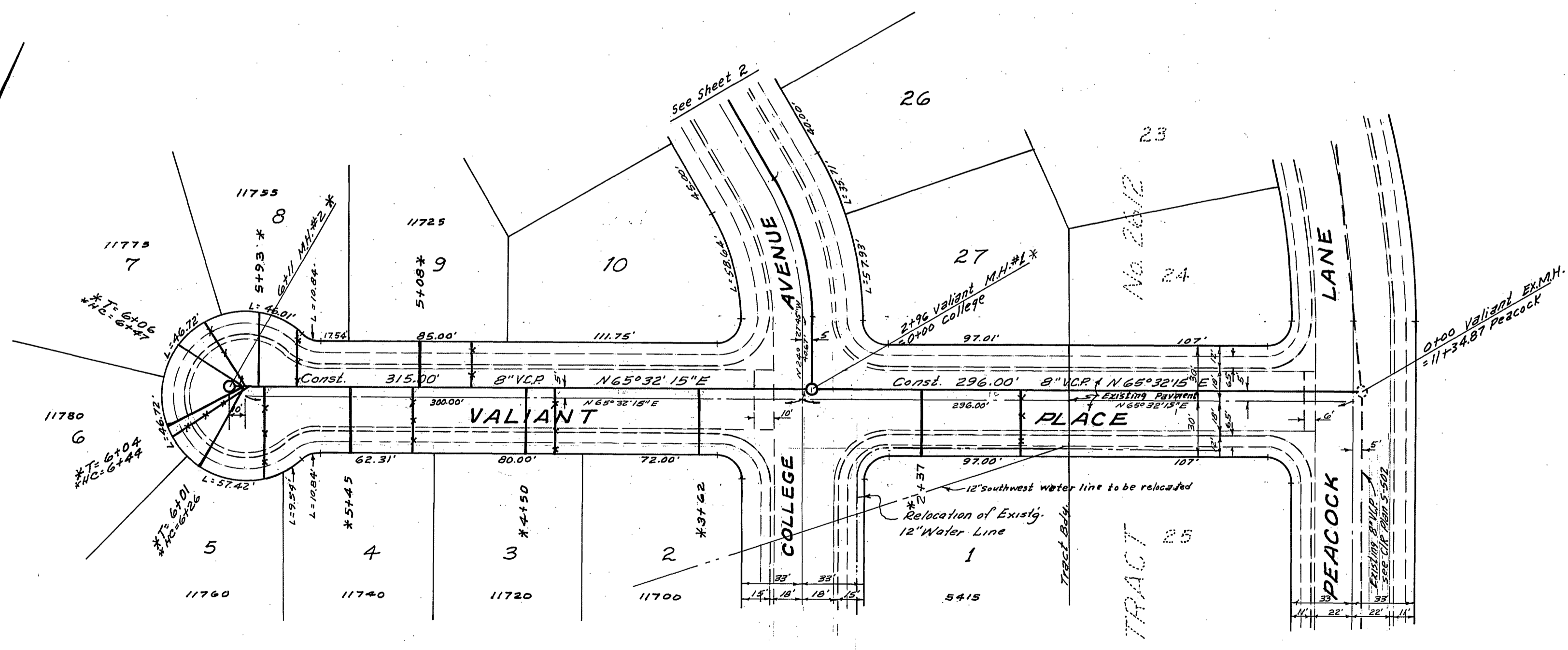
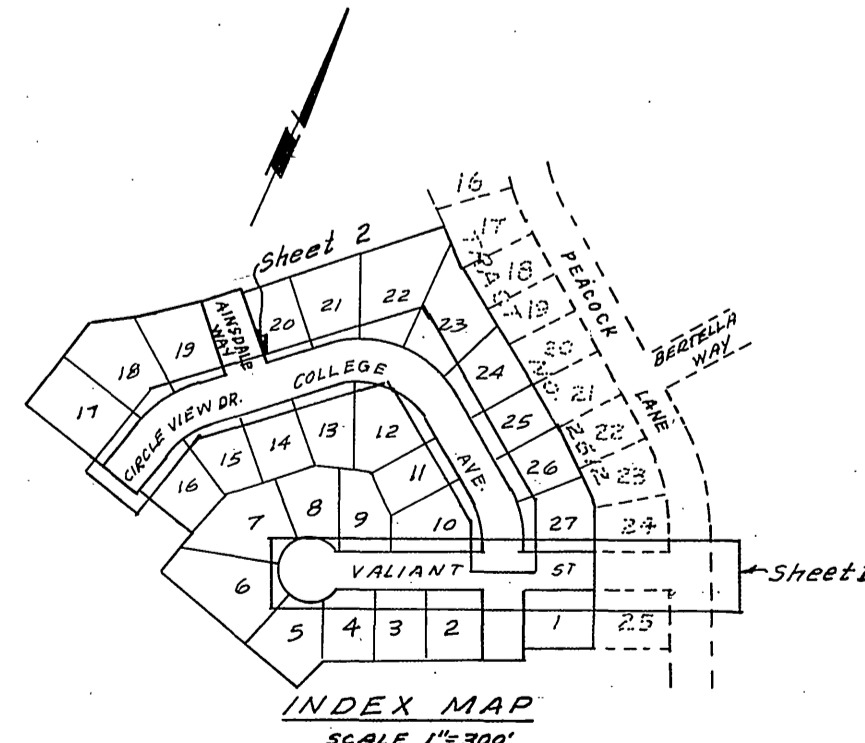
GENERAL NOTES

- Construction shall be in accordance with the City of Riverside, Department of Public Works, Standard Specifications No. 451-551, Standard Drawings.
- It shall be the responsibility of the contractor to clear the site of use in accordance with the provisions of the specifications.
- Joints shall be in accordance with A.S.T.M. Specifications C-425-64, Type I or III or to A.S.T.M. Specifications C-594-62 ("Daggs Type") with certain exceptions or modifications on file with the City Engineer.
- Pipe shall be bedded per Class II, Standard Drawing No. 45, unless otherwise specified on plan.
- Location of trees and laterals to be determined at the direction of owner.
- All shafts and laterals to be constructed in accordance with Standard Drawing No. 502. Stubs shall be plugged and capped.
- Manhole frames and covers to be set to proposed pavement grades.
- Laterals are to be 4" and extended to property line.
- Prior to construction of sewer, Contractor is to expose existing sewer and contact Engineer for vertical alignment.

QUANTITY ESTIMATE

8" Vitrified Clay Pipe	1,463	L.F.
4" Vitrified Clay Pipe	908	L.F.
Man hole Standard No. 500	4	Ea.
Cleanout Standard No. 560	1	Ea.
4" X 8" Tees	27	Ea.
Pavement Replacement	400	S.F.

\* See Special Note on Sheet 2 of 2.



\* AS BUILT 6-12-68 K.S.B.

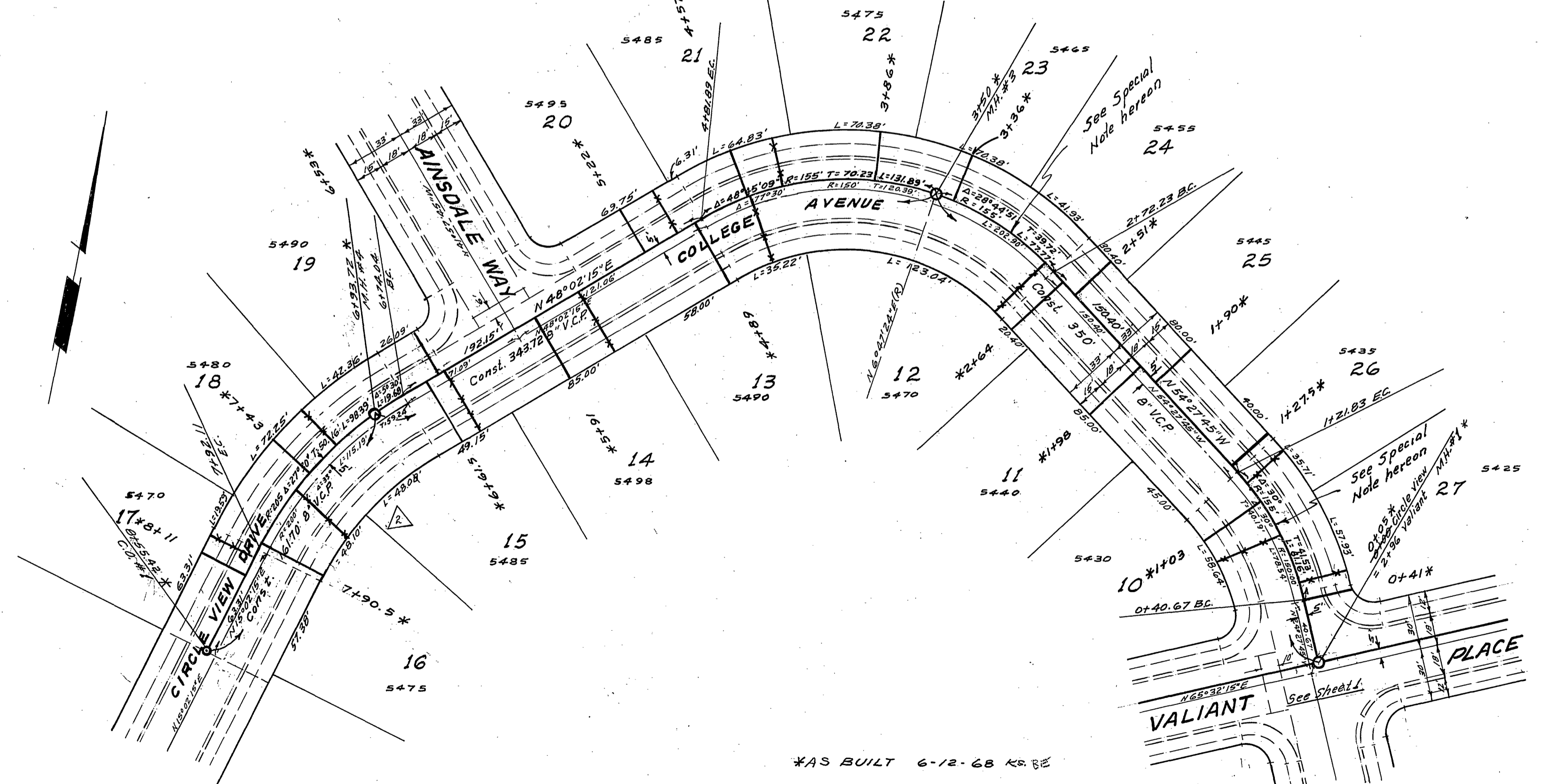
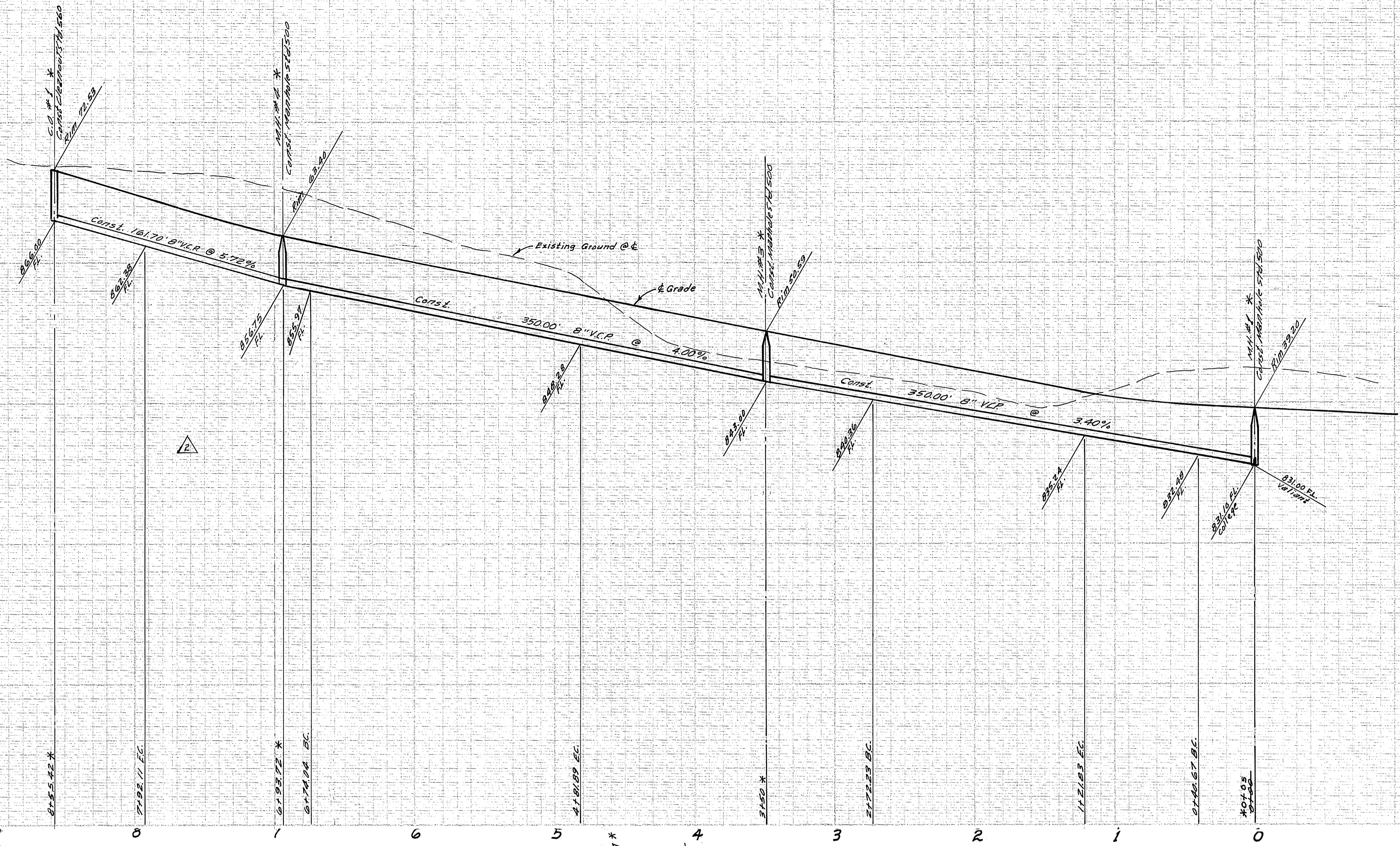
ALBERT A. WEBB ASSOCIATES CIVIL ENGINEERS RIVERSIDE, CALIFORNIA		CITY OF RIVERSIDE, CALIFORNIA DEPARTMENT OF PUBLIC WORKS		PROJECT NO. <b>S-678</b>
APPROVED BY: <i>[Signature]</i> R.E. No. 3976	DATE: 3/1/69	OFFICE ENGINEER: <i>[Signature]</i> PARK DEPARTMENT: <i>[Signature]</i> TRAFFIC DIVISION: <i>[Signature]</i> ASSISTANT CITY ENGINEER: <i>[Signature]</i>	APPROVED BY: <i>[Signature]</i> DIRECTOR OF PUBLIC WORKS	SHEET <b>1</b> OF <b>2</b>
W.O. 66-89 FOR: Johnson-Myersburgh Bldg. F.B. 623		DESIGNED BY: BEL DRAWN BY: BEL CHECKED BY: BEL		DATE: 1-16-69
SEWER PLAN & PROFILE <b>VALIANT PLACE</b> <b>TRACT No. 3761</b>				HORIZ. SCALE: 1" = 50' VERT. SCALE: 1" = 10' FILE NO. 66-89-B

880

860

840

820



Bench Mark: Webb FB 542169  
 Elev. 864.04, Chiselled 'X' on top of curb  
 south side of Sierra Glen 148' West of  
 intersection Sierra Glen & Pascock.

**SPECIAL NOTE**  
 From Sta. 0+40.67 BC to Sta. 1+21.83 EC and from Sta. 1+21.83 BC to Sta. 1+40.67 EC contractor shall use 4'0" lengths of 8" V.C.P. Sewer Pipe.

ALBERT A. WEBB ASSOCIATES CIVIL ENGINEERS RIVERSIDE, CALIFORNIA APPROVED BY: <i>[Signature]</i> DATE: 3/1/68 R.E. No. 2276	CITY OF RIVERSIDE, CALIFORNIA DEPARTMENT OF PUBLIC WORKS OFFICE ENGINEER: <i>[Signature]</i> PARK DEPARTMENT: <i>[Signature]</i> TRAFFIC DIVISION: <i>[Signature]</i> ASSISTANT CITY ENGINEER: <i>[Signature]</i>	SEWER PLAN & PROFILE CIRCLE VIEW DRIVE COLLEGE AVENUE TRACT No. 3761	PROJECT NO.
			S-678
W.O. 66-89 FOR: Johnson, Myrskog & Blvs. F.B. 623 DESIGNED BY: BEL DRAWN BY: BEL CHECKED BY: BEL	REVISIONS MARK: _____ DATE: _____ APPR. DATE: _____	DATE: 1-16-69 HORIZ. SCALE: 1" = 50' VERT. SCALE: 1" = 10'	SHEET 2 OF 2 FILE NO. 66-89-B