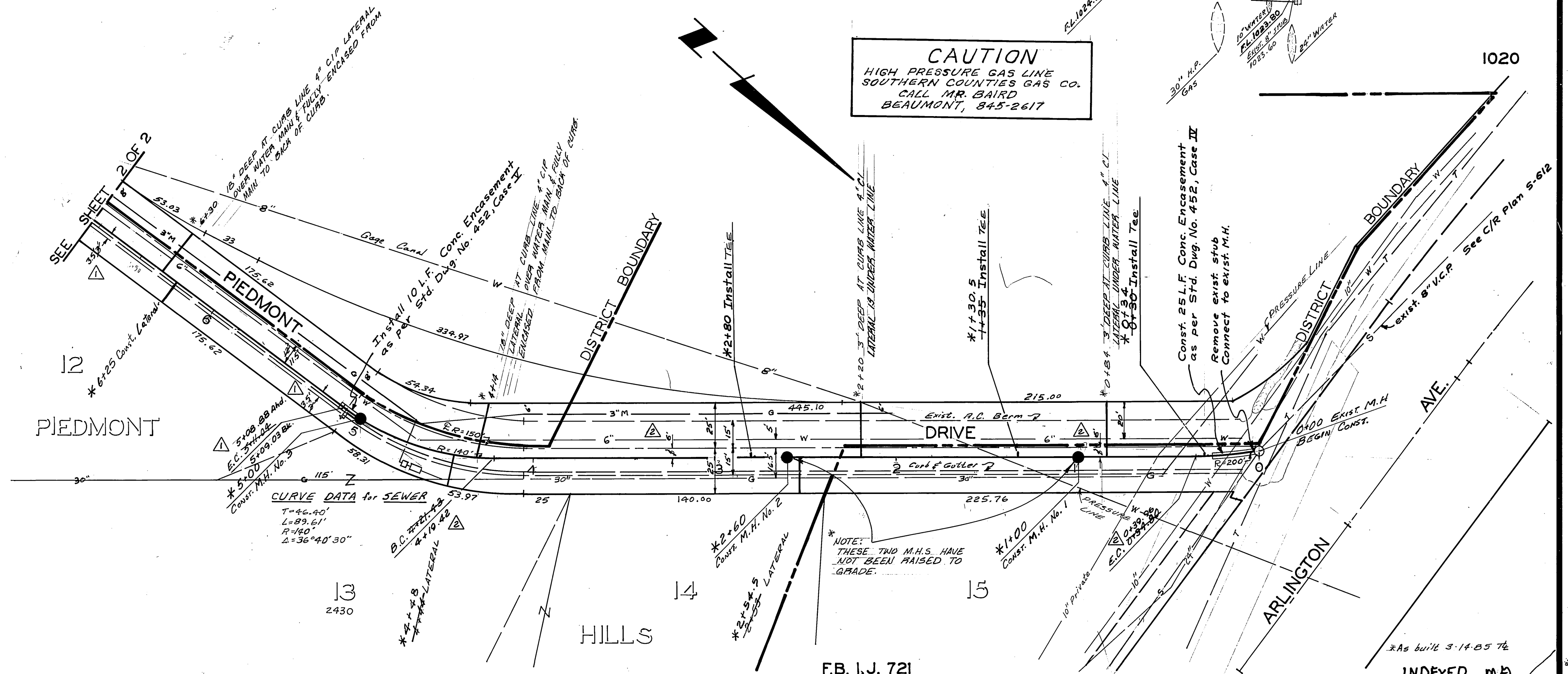


CAUTION
 HIGH PRESSURE GAS LINE
 SOUTHERN CALIFORNIA GAS CO.
 CALL MR. BAIRD
 BEAUMONT, 845-2617

- Notes:**
- 1) Sewer laterals shall be 4" V.C.P. constructed per City of Riverside Std. Dwg. No. 562 and shall be located in the field.
 - 2) Manholes No. 3 through 6 shall have eccentric cones.

Quantities:

4" V.C.P.	104	L.F.
8" V.C.P.	1410	L.F.
8"x4" TEES	11	E.A.
Manholes	6	E.A.
Cleanout	1	E.A.
Conc. Encasement	35	L.F.
Pavement Replacement	1426	L.F.
Rock Excavation	46	C.Y.



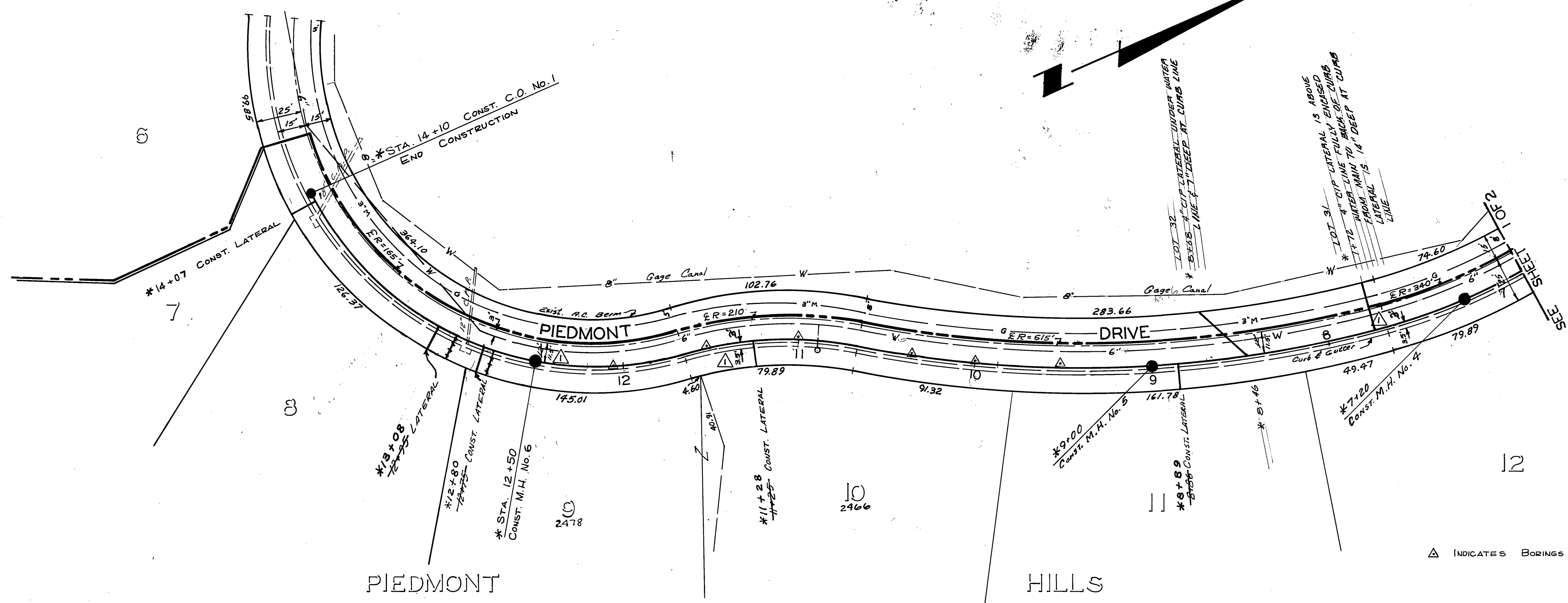
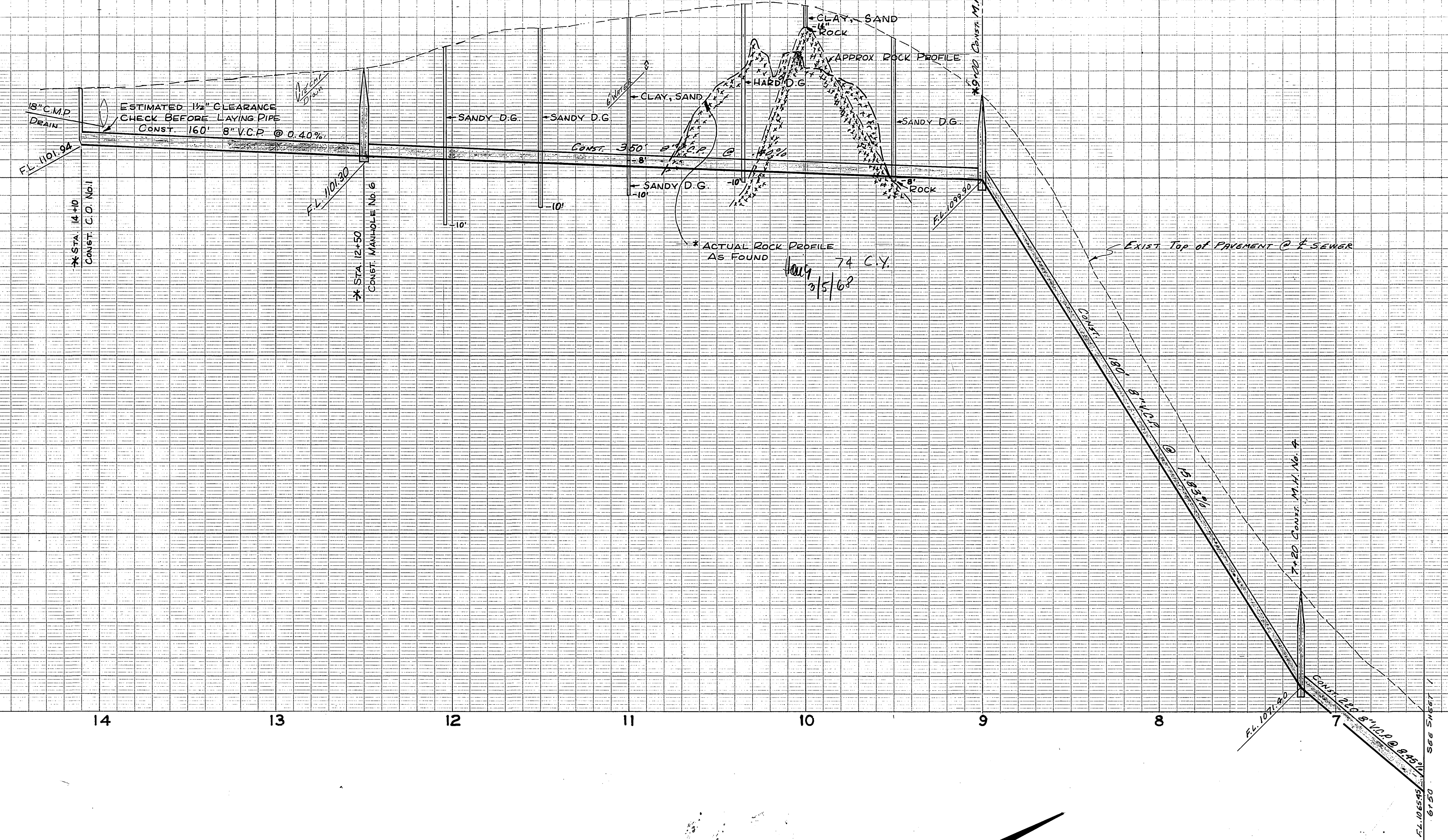
*AS BUILT 4-19-68 K.S.

F.B. I, J, 721 CITY OF RIVERSIDE, CALIFORNIA DEPARTMENT OF PUBLIC WORKS		INDEXED m.b. PROJECT NO. 6069	
APPROVED BY OFFICE ENGINEER PARK DEPARTMENT TRAFFIC DIVISION ASSISTANT CITY ENG.		APPROVED BY William B. Gardner DIRECTOR OF PUBLIC WORKS	
DESIGNED BY DRAWN BY DUS/KS CHECKED BY J.H.G.		DATE 10/27/67 HORIZ. SCALE: 1" = 40' VERT. SCALE: 1" = 4' FILE NO.	

S-680
 SHEET 1 OF 2

1110
1100
1090
1080
1070

1110
1100
1090
1080
1070



*AS BUILT 4-19-68 AS

*As built 3-14-85 TE

FB, I, J, 721

DESIGNED BY	DRAWN BY	CHECKED BY
DATE	DATE	DATE
REVISIONS	APPR.	DATE

CITY OF RIVERSIDE, CALIFORNIA DEPARTMENT OF PUBLIC WORKS		
APPROVED BY	BY	DATE
OFFICE ENGINEER	W. B. GARDNER	12-21-68
PARK DEPARTMENT		
TRAFFIC DIVISION		
ASSISTANT CITY ENG.		

PIEDMONT DRIVE
SANITARY SEWER DISTRICT

PROJECT NO. 6069
S-680
SHEET 2 OF 2
FILE NO.

HORIZ. SCALE: 1" = 40'
VERT. SCALE: 1" = 4'