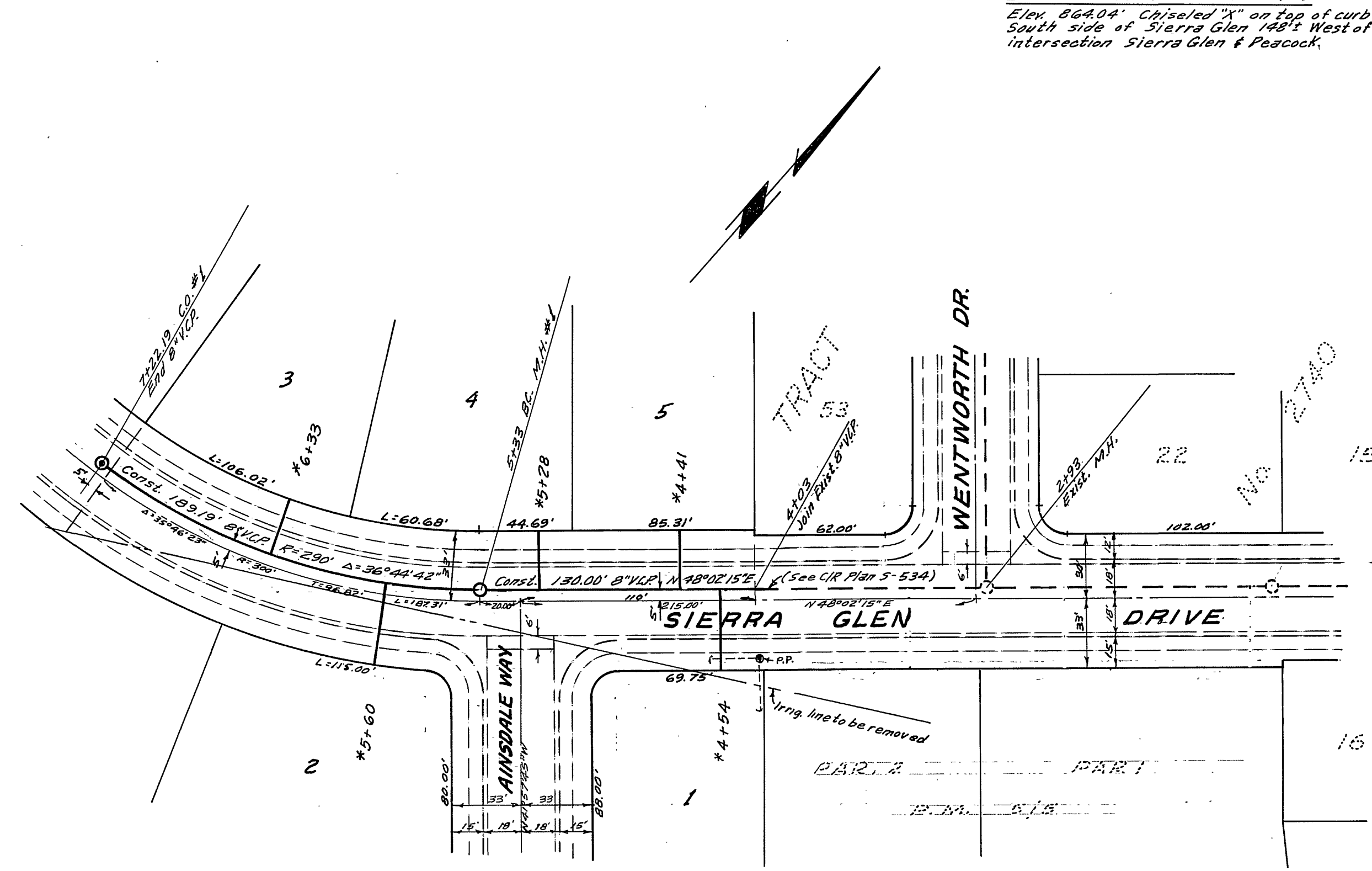
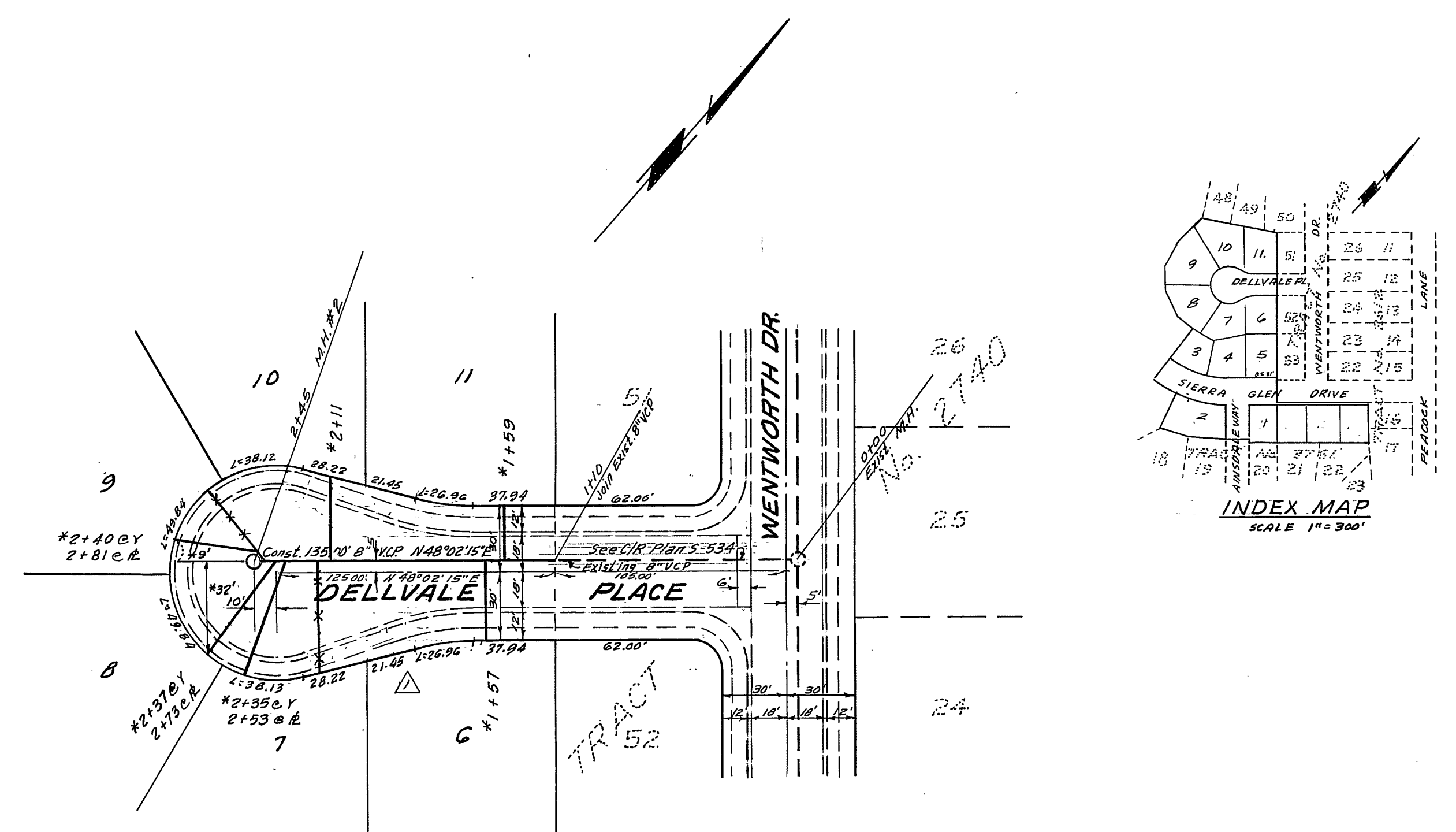


Bench Mark: Webb FB. 542/69
 Elev. 864.04' Chiseled "X" on top of curb
 South side of Sierra Glen 188' West of
 intersection Sierra Glen & Pascoak

- GENERAL NOTES
1. It shall be the responsibility of the contractor to clear the right of way in accordance with the provisions of the law as it affects each utility, including irrigation lines and appurtenances and at no cost to the City.
 2. Joints shall be in accordance with A.S.T.M. Specifications C-535-64-Type F with or to A.S.T.M. Specifications C-534-64 (Lead Seal) with certain exceptions or modifications on file with the City Engineer.
 3. Pipe shall be bedded per Case II, Standard Drawing No. 452, unless otherwise specified on plan.
 4. Location of eyes and laterals to be determined at the direction of the owner.
 5. All stubs and laterals to be constructed in accordance with Standard Drawing No. 562. Stubs shall be plugged and capped.
 6. Manhole frames and covers to be set to proposed pavement grade after the final paving of the streets.
 7. Laterals are to be 4" and extended to property line.
 8. Prior to construction of sewer, Contractor is to expose existing sewer and contact Engineer for verification of existing sewer.
 9. Construction shall be in accordance with Standard Specifications for Public Works Construction, 1973 Edition, and City of Riverside Standard Drawings.
 10. A plug shall be installed and will remain in place where the new sewer connects to the existing sewer until the new sewer is accepted by the City.



NOTICE TO CONTRACTOR
 The existence and location of any underground utility pipes or structures shown on these plans are obtained by a search of the available records. To the best of our knowledge, there are no existing utilities except as shown on these plans.
 The contractor is required to take due precautionary measures to protect the utility lines shown and any other lines not shown on these plans.

ALBERT A. WEBB ASSOCIATES CIVIL ENGINEERS RIVERSIDE, CALIFORNIA APPROVED BY: <i>Emmet Newell</i> DATE: 6/1/69 R.E. No. 9876	CITY OF RIVERSIDE, CALIFORNIA DEPARTMENT OF PUBLIC WORKS APPROVED BY: <i>John Marshall</i> DATE: 6/23/69 DIRECTOR OF PUBLIC WORKS	*AS BUILT 6-77 KET	INDEXED S.R. PROJECT NO.
		SEWER PLAN & PROFILE DELLVALE PLACE SIERRA GLEN DRIVE TRACT No. 7499	SHEET 1 OF 1 FILE NO. 76-21-B
W.O. 66-90 FOR: Johnson Myerscough Bldg. F.B. 623 DESIGNED BY: BEL DRAWN BY: BEL CHECKED BY: REC	APPROVED BY: <i>Edward Dellvale</i> DATE: 6/1/69 TRACT Number 7499 REVISIONS:	APPROVED BY: <i>John Marshall</i> DATE: 6/23/69 ASSISTANT CITY ENGINEER	HORIZ. SCALE: 1" = 50' VERT. SCALE: 1" = 10'