

INDEX		
SHEET	TITLE SHEET	
1	PLAN & PROFILE	HOLE AVE. PUMP STATION TO STA. 8+00
2	"	STA. 8+00 TO STA. 18+00
3	"	STA. 18+00 TO STA. 28+00
4	"	STA. 28+00 TO STA. 38+00
5	"	STA. 38+00 TO STA. 48+00
6	"	STA. 48+00 TO STA. 58+00
7	"	STA. 58+00 TO STA. 65+91.54
8	"	STA. 65+90.70 TO STA. 76+00
9	"	STA. 76+00 TO GENERAL HOSPITAL
10	HOLE AVE. PUMP STATION DETAILED PLAN & SECTIONS	
11	MANHOLE DETAILED PLANS & SECTIONS	
12		

# RIVERSIDE CALIFORNIA



DEPARTMENT OF PUBLIC WORKS

## HOLE AVE. FORCE MAIN PHASE I

LENGTH OF PROJECT = 8303 Feet = 1.57 Mile

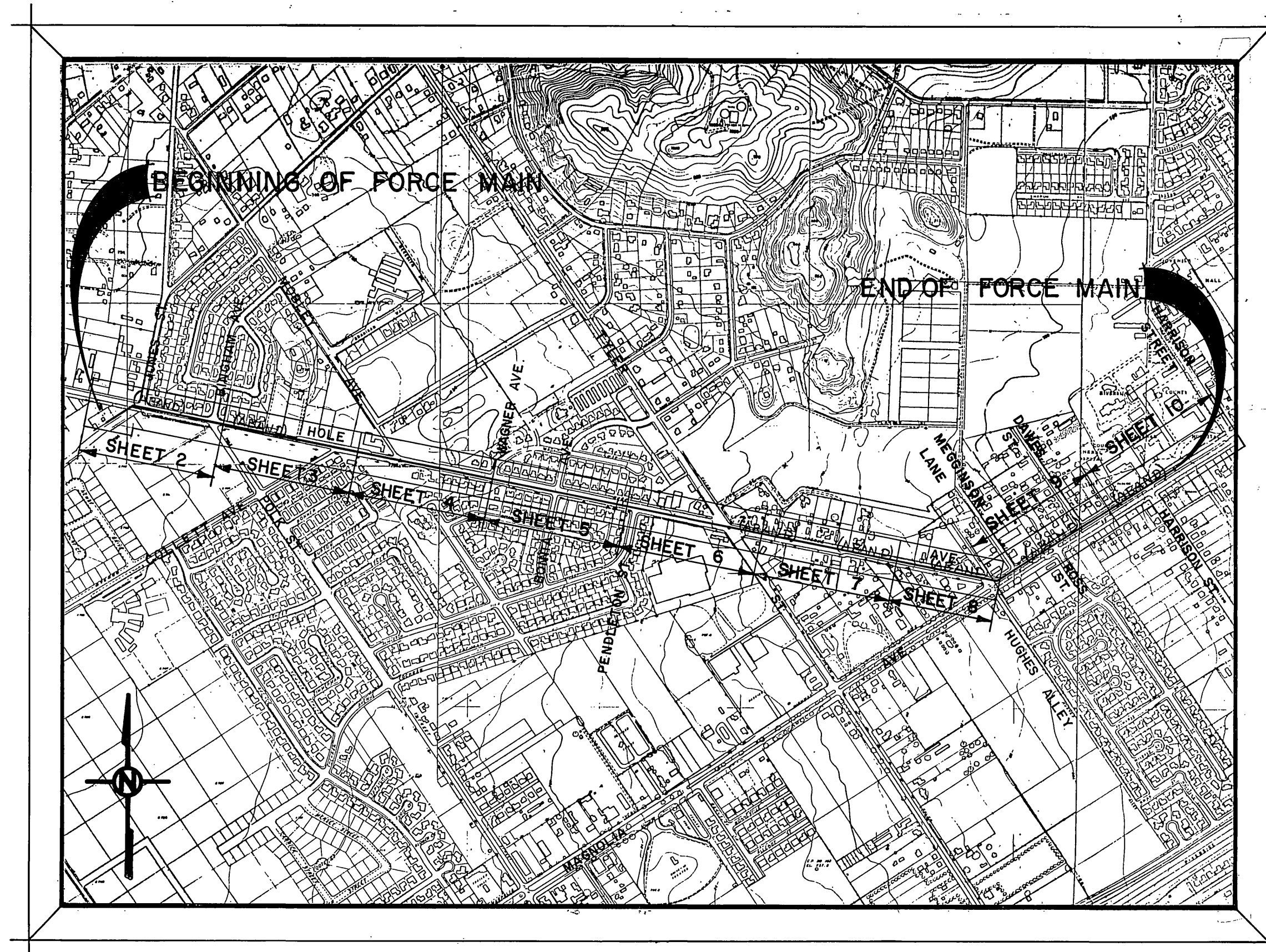
### CONSTRUCTION LEGEND

- FM. HOLE AVE. FORCE MAIN, SIZES NOTED ON PLANS & PROFILES. (TECHITE PIPE WAS USED)
- FLANGED FITTINGS, SIZES NOTED ON PLANS & PROFILES.
- BELL & SPIGOT FITTINGS, SIZES NOTED ON PLANS & PROFILES.

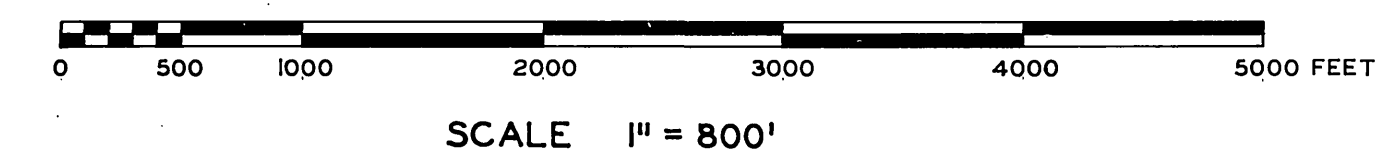
- CENTER LINE
- RIGHT-OF-WAY LINE
- SUBDIVISION LOT LINE

### EXISTING CULTURE & UNDERGROUND LEGEND

- | EXISTING UNDERGROUND UTILITIES |               |                    |           |
|--------------------------------|---------------|--------------------|-----------|
| SANITARY SEWER                 | 8"VCP - S     | TELEPHONE CONDUIT  | T - T     |
| WATER LINE                     | 8"CI - W      | ELECTRICAL CONDUIT | E - E     |
| STORM DRAIN                    | 24"RCP - SD   | STREET LIGHTING    | SL - SL   |
| CULVERT                        | 15"CONC - C   | TRAFFIC SIGNAL     | SIG - SIG |
| IRRIGATION LINE                | 20" IRR - IRR | FIRE ALARM         | F - F     |
| GAS LINE                       | 3" M - G      | ABANDONED UTILITY  | - - - - - |



PROJECT LOCATION PLAN



- ### EXISTING TOPOGRAPHY
- |                                      |   |                                       |
|--------------------------------------|---|---------------------------------------|
| (S) SANITARY SEWER MH                | (O) POWER POLE                          | RAILROAD TRACKS                       |
| (C) SANITARY SEWER CLEANOUT          | (O---) GUY POLE                         | RAILROAD SIGN                         |
| (D) STORM DRAIN MH                   | (O---) POLE & GUY ANCHOR                | (TS) RAILROAD SIGNAL                  |
| (I) IRRIGATION WHR                   | (PB) PULL BOX                           |                                       |
| (W) WATER MH                         | (T) TRAFFIC SIGN                        |                                       |
| (G) GAS MH                           | (P) PARKING METER                       |                                       |
| (E) ELECTRIC MH                      | (F) FIRE ALARM BOX                      | STREET LIGHT                          |
| (T) TELEPHONE MH OR VAULT            |   | TRAFFIC SIGNAL                        |
|                                      |   | TRAFFIC SIGNAL ON MAST ARM            |
|                                      |   | TRAFFIC CONTROL BOX                   |
|                                      |   | TRAFFIC SIGNAL DETECTOR               |
|                                      |   | PEDESTRIAN CONTROL FOR TRAFFIC SIGNAL |
| WATER METER                          | (G) GAS METER                           |                                       |
| (F) FIRE HYDRANT                     | (M) MAIL BOX                            |                                       |
| (S) SPRINKLER HEAD                   | (E) ELECTRICAL CONDUIT IN CROSS SECTION |                                       |
| (V) WATER VALVE                      |   |                                       |
| (G) GAS VALVE                        |   |                                       |
| (F) HYDRANT OR FAUCET                |   |                                       |
| CONCRETE                             |   | TREE SHOWING DIAMETER IN INCHES       |
| ASPHALT                              |   | PALM SHOWING DIAMETER IN INCHES       |
| EDGE OF PAVEMENT                     |   | SHRUBBERY                             |
| BUILDING                             |   | TREE STUMP DIAMETER IN INCHES         |
| UNDERGROUND OR OVERHANGING STRUCTURE |   |                                       |
| BLOCK WALL                           |   | TOP OF SLOPE                          |
| BOARD FENCE                          |   | TOE OF SLOPE                          |
| WIRE FENCE                           |   | DIRECTION OF FLOW                     |
| CHAIN LINK FENCE                     |   |                                       |

**-CAUTION-**  
PACIFIC TELEPHONE  
CABLES UNDERGROUND  
BEFORE EXCAVATING  
CALL COLLECT

7:30 A.M. to 5 P.M. & Holidays  
 Orange County 714-633-0811 714-547-6606  
 Riverside County 714-684-0071 714-547-6606  
 Inyo County 714-684-0071 714-547-6606  
 San Bernardino County 714-684-0071 714-547-6606  
 Los Angeles County 213-621-3111  
 Ventura County 213-621-3111  
 San Diego County 714-298-0595 714-232-0027

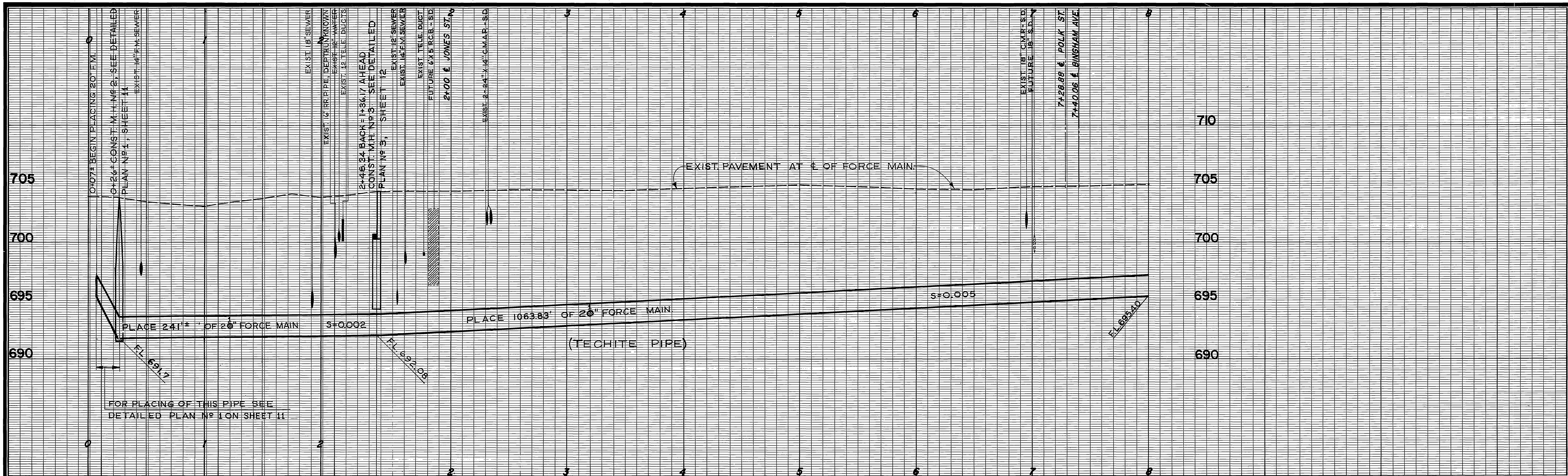
FOR FREE CABLE LOCATING SERVICE

**HOLE AVE. FORCE MAIN PHASE I**

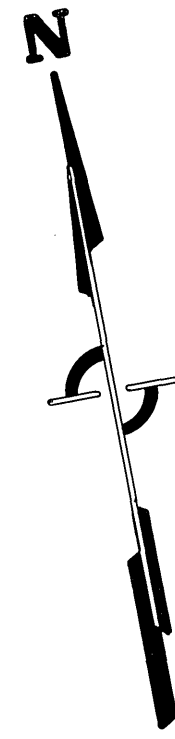
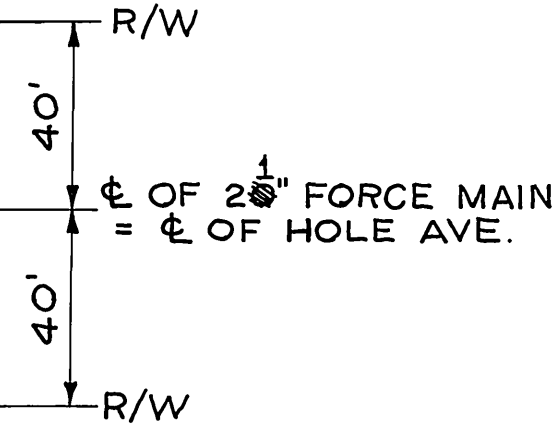
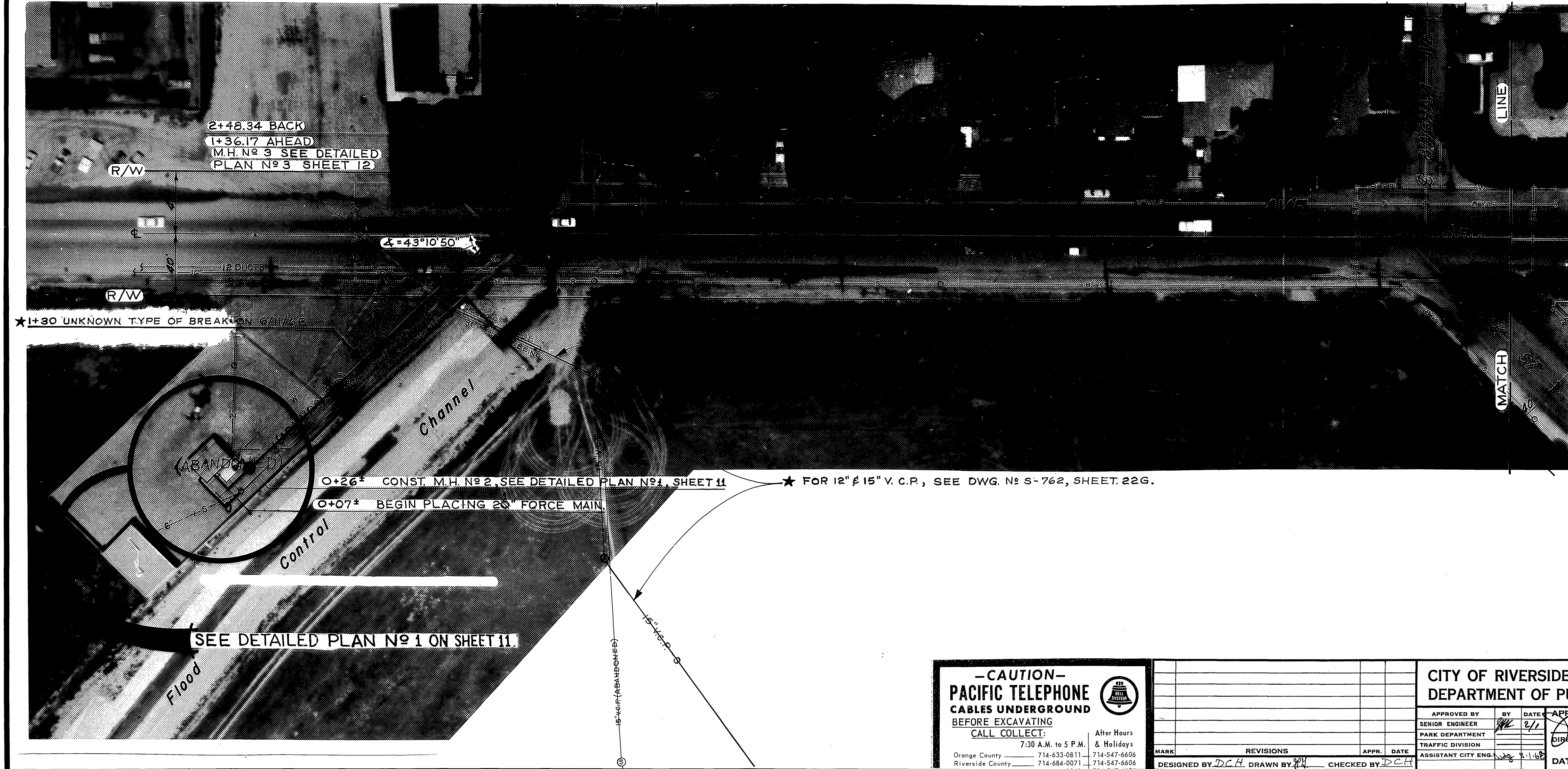
APPROVED BY	BY DATE	APPROVED BY	INDEXED M.B.
OFFICE ENGINEER	<i>[Signature]</i> 2/7/68	<i>[Signature]</i>	PROJECT NO. 5100
PARK DEPARTMENT		DIRECTOR OF PUBLIC WORKS	<b>S-687</b>
TRAFFIC DIVISION			SHEET 1 OF 12
ASSISTANT CITY ENG.		DATE 2-7-68	

DESIGNED BY D.C.H. DRAWN BY J.P.H. CHECKED BY D.C.H. 6-5-NO.





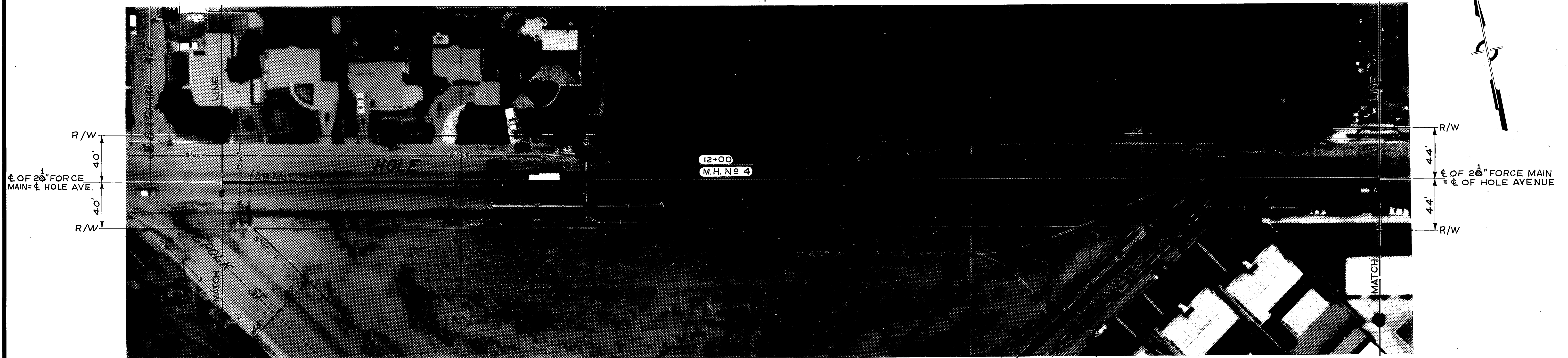
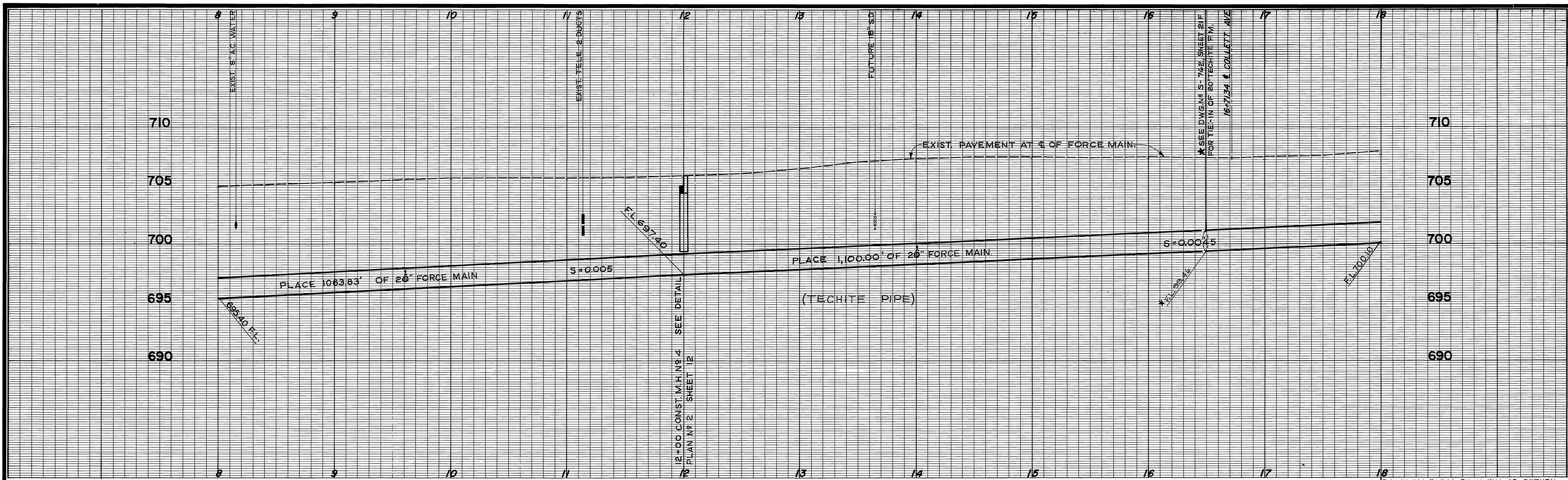
B.M. ELEV. 704.109 PK NAIL IN NE CB RETURN AT JONES & HOLE - FB. 704/29  
 B.M. ELEV. 704.43 PK NAIL IN CB RETURN AT HOLE & BINGHAM - FB. 704/28



NOTE:  
 WHERE 20" PIPE IS CALLED FOR, 21" PIPE MAY BE USED (TYPICAL)  
 AS BUILT 21" TECHITE FORCE MAIN.

<p align="center"><b>-CAUTION-</b>  <b>PACIFIC TELEPHONE</b>  <b>CABLES UNDERGROUND</b>  <b>BEFORE EXCAVATING</b>  <b>CALL COLLECT:</b>          7:30 A.M. to 5 P.M. &amp; Holidays          Orange County 714-633-0811 714-547-6606          Riverside County 714-684-0071 714-547-6606</p>		<p align="center">CITY OF RIVERSIDE, CALIFORNIA          DEPARTMENT OF PUBLIC WORKS</p>		<p align="center">HOLE AVE. FORCE MAIN          PHASE I</p>		<p>ACCOUNT NO. 5100</p>
		<p>APPROVED BY: <i>[Signature]</i> DATE: 2/1/68          SENIOR ENGINEER</p>		<p>APPROVED BY: <i>[Signature]</i> DATE: 2-7-68          DIRECTOR OF PUBLIC WORKS</p>		<p align="center"><b>S-687</b></p>
<p>DESIGNED BY: DCH DRAWN BY: JH CHECKED BY: DCH</p>		<p>REVISIONS: _____</p>		<p>TRAFFIC DIVISION</p>		<p>SHEET 2 OF 12</p>
<p>HORIZ. SCALE: 1" = 40'</p>		<p>VERT. SCALE: 1" = 4'</p>		<p>66-PROJECT NO.</p>		



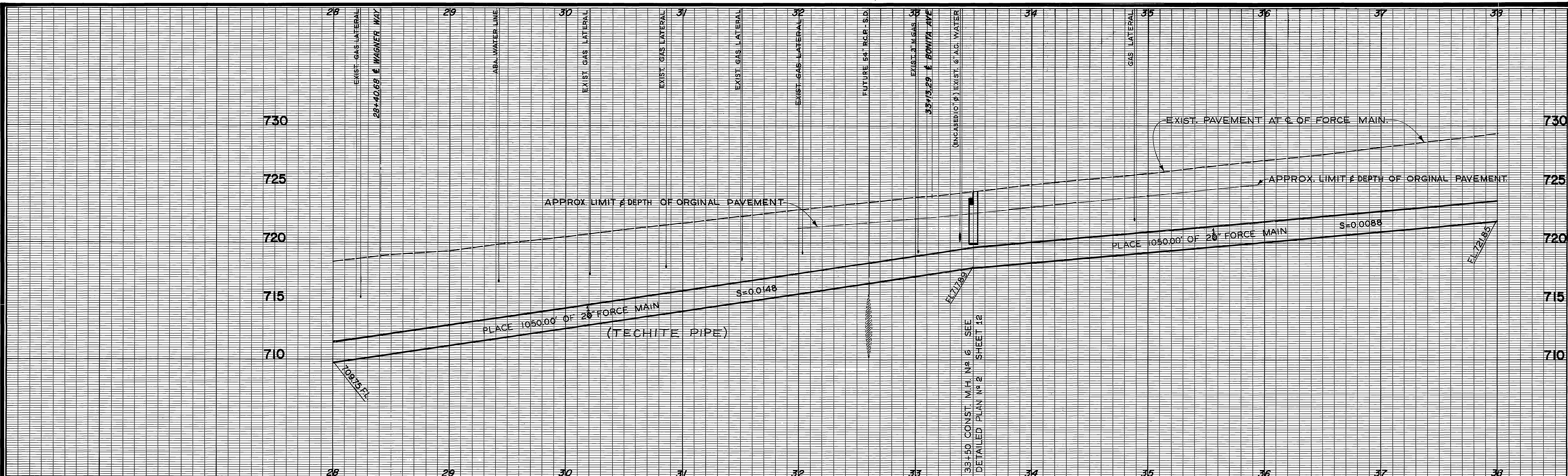


<p align="center"><b>-CAUTION-</b>  <b>PACIFIC TELEPHONE</b>  <b>CABLES UNDERGROUND</b>          BEFORE EXCAVATING          CALL COLLECT:</p> <p align="center">7:30 A.M. to 5 P.M. After Hours          &amp; Holidays</p> <p>Orange County 714-633-0811 714-547-6606          Riverside County 714-984-0071 714-547-6606</p>	<p align="center">CITY OF RIVERSIDE, CALIFORNIA          DEPARTMENT OF PUBLIC WORKS</p>		<p align="center">HOLE AVE. FORCE MAIN          PHASE I</p>		<p>ACCOUNT NO. 5100</p>
	<p>APPROVED BY: <i>[Signature]</i> DATE: 2/11/68          SENIOR ENGINEER          PARK DEPARTMENT          TRAFFIC DIVISION          ASSISTANT CITY ENGINEER</p>		<p>APPROVED BY: <i>[Signature]</i> DATE: 2-7-68          DIRECTOR OF PUBLIC WORKS</p>		<p align="center"><b>S-687</b></p>
<p>DESIGNED BY: DCH DRAWN BY: [ ] CHECKED BY: DCH</p>		<p>DATE: 2-7-68</p>		<p align="center">Plan &amp; Profile          Sta. 8+00 to Sta. 18+00</p>	
<p>HORIZ. SCALE: 1" = 40' VERT. SCALE: 1" = 4'</p>		<p>SHEET 3 OF 12</p>		<p>9-6- PROJECT NO.</p>	



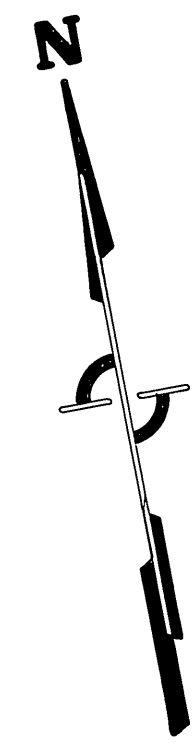




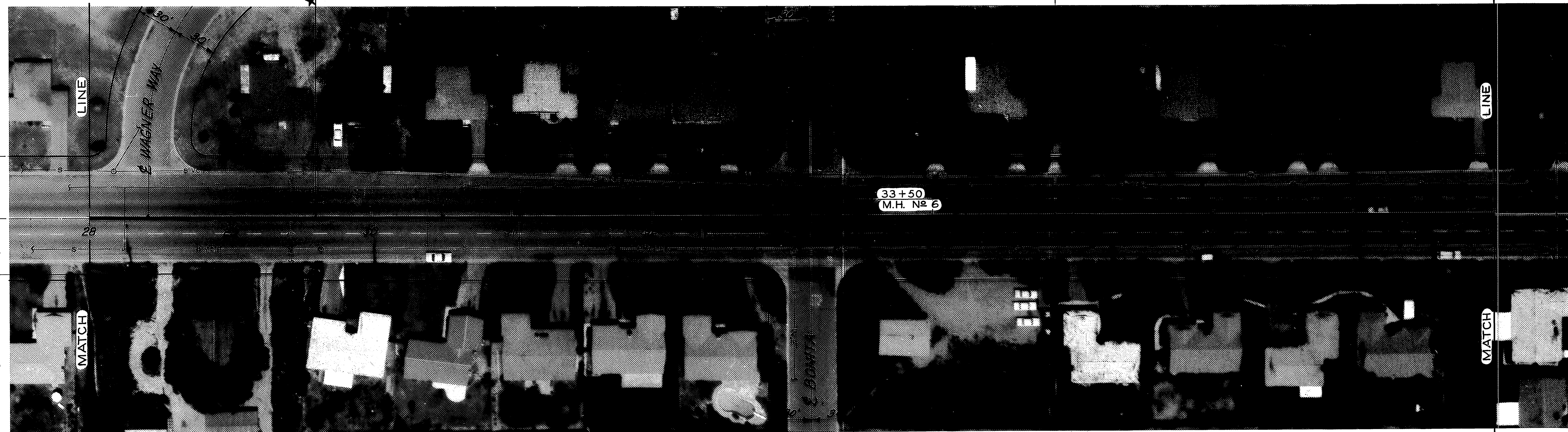


B.M. ELEV. 710.85 PK NAIL IN S. CB HOLE AT PROJECTED & OF MOBLEY.  
 B.M. ELEV. 739.11 PK NAIL IN W. CB TYLER 175' S'LY HOLE Y-1/41

9 1/2" 50' 40' CIRCUMFERENTIAL BREAK ON TOP OF PIPE ON THE DATE OF 9/22/71

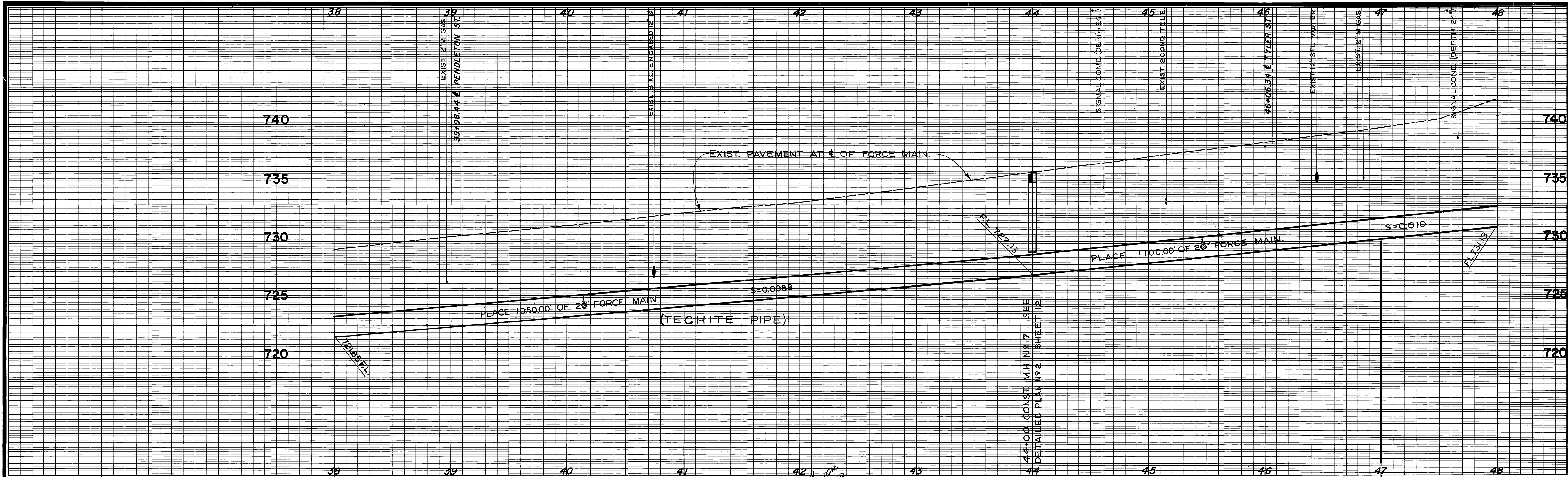


4'-4" R/W  
 & OF 20" FORCE MAIN = & OF HOLE AVENUE  
 4'-0" R/W



CITY OF RIVERSIDE, CALIFORNIA DEPARTMENT OF PUBLIC WORKS		HOLE AVE. FORCE MAIN PHASE I		ACCOUNT NO. 5100
APPROVED BY SENIOR ENGINEER PARK DEPARTMENT	BY <i>me/77</i>	DATE 2-7-68	APPROVED BY <i>Waltuch</i> DIRECTOR OF PUBLIC WORKS	S-687
MARK	REVISIONS	APPR. DATE	DATE	SHEET 5 OF 12
DESIGNED BY DCH	DRAWN BY	CHECKED BY DCH	DATE	HORIZ. SCALE: 1" = 40' VERT. SCALE: 1" = 4'

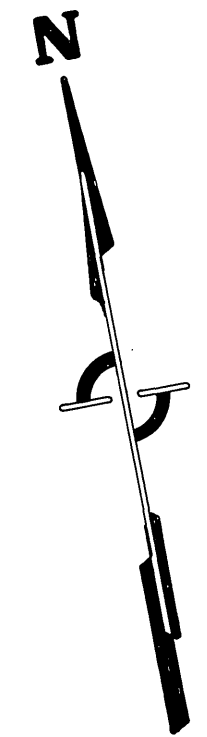




*THIS LINE HAS BEEN ABANDONED AS A SEWER AND HAS BEEN CONVERTED TO A STORM DRAIN*

B.M. ELEV. 739.11 PK NAIL IN W CB RET. TYLER 175' S'LY HOLE Y-1/41

BEGINNING OF SAND AREA



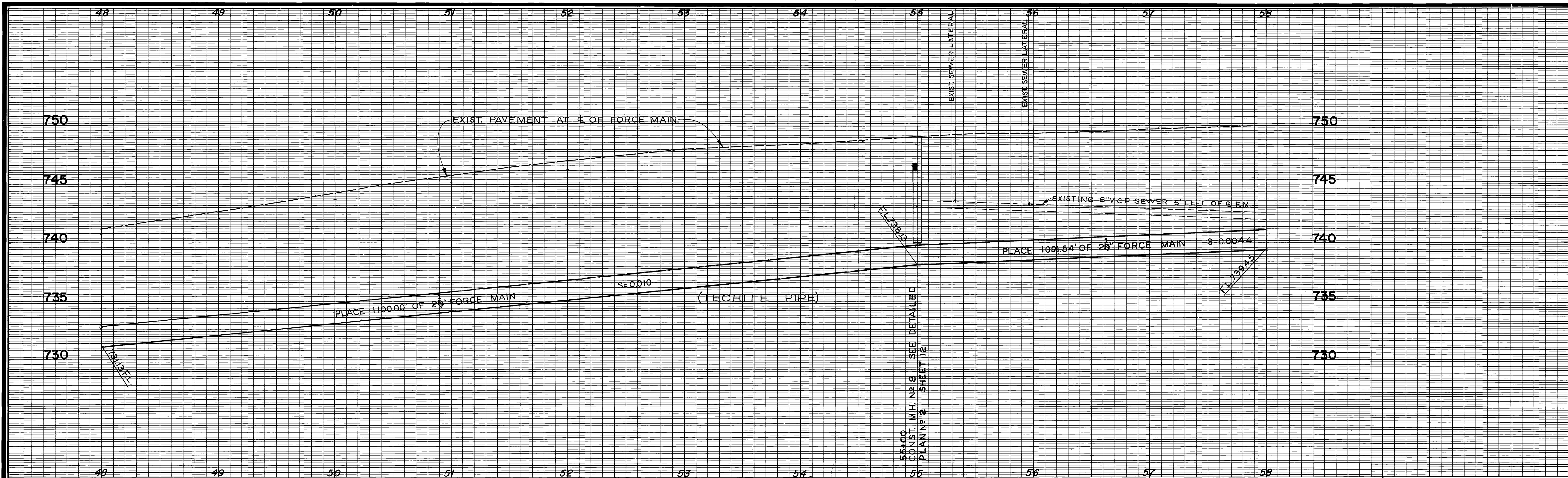
R/W  
4'4"  
 $\epsilon$  OF 24" FORCE MAIN =  $\epsilon$  OF HOLE AVENUE  
4'4"  
R/W



**CAUTION**  
PACIFIC TELEPHONE  
CABLES UNDERGROUND  
BEFORE EXCAVATING  
CALL COLLECT:  
After Hours  
7:30 A.M. to 5 P.M. & Holidays  
Orange County 714-633-0811 714-547-6606  
Riverside County 714-684-0071 714-547-6606  
Inyo County 714-684-0071 714-547-6606  
San Bernardino County 714-684-0071 714-547-6606  
Los Angeles County 213-621-3111 24 HOUR SERVICE  
Ventura County 213-621-3111  
San Diego County 714-298-0595 714-232-0027  
FOR FREE CABLE LOCATING SERVICE

CITY OF RIVERSIDE, CALIFORNIA DEPARTMENT OF PUBLIC WORKS		HOLE AVE. FORCE MAIN PHASE I Plan & Profile Sta. 38+00 to Sta. 48+00		ACCOUNT NO. 5100  <b>S-687</b> SHEET 6 OF 12
APPROVED BY SENIOR ENGINEER PARK DEPARTMENT TRAFFIC DIVISION ASSISTANT CITY ENG.	BY DATE [Signature] 2/7/68	APPROVED BY DIRECTOR OF PUBLIC WORKS [Signature]	DATE 2-7-68	HORIZ. SCALE: 1" = 40' VERT. SCALE: 1" = 4'
DESIGNED BY: DCA DRAWN BY: [Signature] CHECKED BY: DCA		9-9- PROJECT NO.		





B.M. ELEV. 739.11 PK NAIL IN W. CB.  
TYLER 175' SLY HOLE Y-1/41  
B.M. ELEV. 757.175 RR SPK IN PEPPER  
TREE CTR OF MAG AVE 35' ±  
5'LY OF C/L MEGGINSON LANE  
FB 693/12

← SAND AREA →

★ 51+10 CIRCUMFERENTIAL  
TYPE OF BREAK ON BOTTOM OF  
PIPE ON THE DATE OF 2/3/71  
★ 51+30 CIRCUMFERENTIAL  
TYPE OF BREAK ON BOTTOM  
OF PIPE ON THE DATE OF 2/2/71

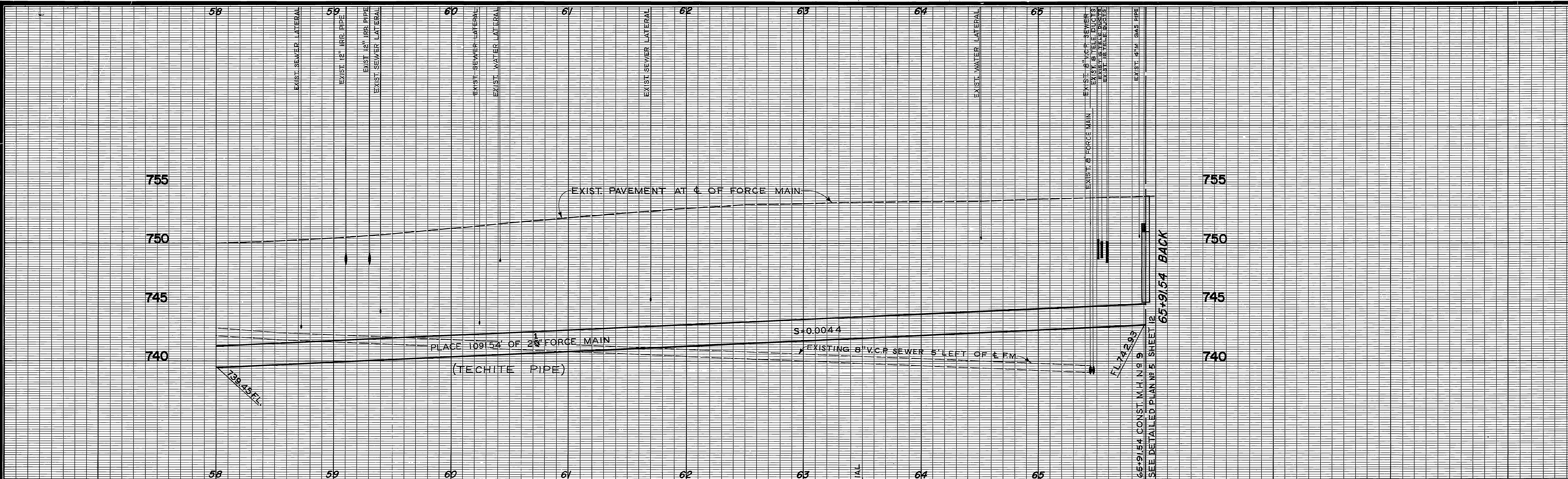
★ 54+00 CIRCUMFERENTIAL  
TYPE OF BREAK ON BOTTOM  
OF PIPE ON THE DATE 9/29/70



R/W  
4.4'  
C OF 28" FORCE MAIN  
= C OF HOLE AVENUE.  
30'  
R/W

CITY OF RIVERSIDE, CALIFORNIA DEPARTMENT OF PUBLIC WORKS		HOLE AVE. FORCE MAIN PHASE I		ACCOUNT NO. 5100
APPROVED BY SENIOR ENGINEER TRAFFIC DIVISION		APPROVED BY <i>[Signature]</i> DIRECTOR OF PUBLIC WORKS		S-687
DESIGNED BY DCH DRAWN BY JJA CHECKED BY DCH		DATE 2-7-68		SHEET 7 OF 12
HORIZ. SCALE: 1" = 40'		VERT. SCALE: 1" = 4'		6-6- PROJECT NO.





B.M. ELEV. 757.175 RR. SPK. IN PEPPER TREE CTR. OF MAG. AVE. 35' ± E. LY. OF C/R MEGGINSON LANE, F.B. 633/12.

SAND AREA

REMOVE & REPLACE CURB & GUTTER TO MATCH EXISTING.

★ 63+50 CIRCUMFERENTIAL TYPE OF BREAK ON BOTTOM OF PIPE ON DATE OF 10/11/65



R/W 4.4' 30' R/W  
 C. OF 24" FORCE MAIN = C. OF HOLE AVENUE

NOTE:  
 1. FOR ADDITIONAL TRAFFIC SIGNAL CONDUIT LOCATIONS CONTACT TRAFFIC DIVISION AT 787-7366

**-CAUTION- PACIFIC TELEPHONE CABLES UNDERGROUND BEFORE EXCAVATING**

CALL COLLECT:

Orange County	714-633-0811	714-547-6606
Riverside County	714-684-0071	714-547-6606
Inyo County	714-684-0071	714-547-6606
San Bernardino County	714-684-0071	714-547-6606
Los Angeles County	213-621-3111	24 HOUR SERVICE
Ventura County	213-621-3111	24 HOUR SERVICE
San Diego County	714-298-0595	714-232-0027

FOR FREE CABLE LOCATING SERVICE

**-CAUTION- PACIFIC TELEPHONE CABLES UNDERGROUND BEFORE EXCAVATING**

CALL COLLECT:

Orange County	714-633-0811	714-547-6606
Riverside County	714-684-0071	714-547-6606

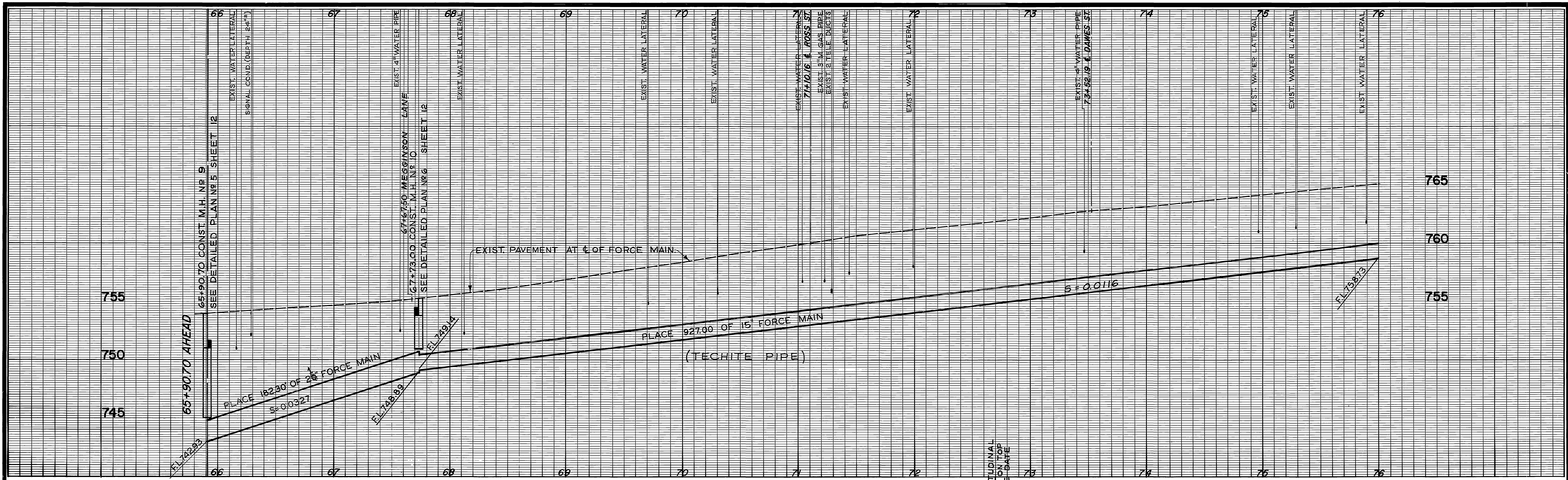
MARK	REVISIONS	APPR.	DATE

CITY OF RIVERSIDE, CALIFORNIA DEPARTMENT OF PUBLIC WORKS			
APPROVED BY	BY	DATE	APPROVED BY
		1/71	
PARK DEPARTMENT		DIRECTOR OF PUBLIC WORKS	
TRAFFIC DIVISION			
ASSISTANT CITY ENG.		DATE 2-7-68	

HOLE AVE. FORCE MAIN  
 PHASE I  
 Plan & Profile  
 Sta. 58+00 to Sta. 65+91.54  
 HORIZ. SCALE: 1" = 40'  
 VERT. SCALE: 1" = 4'

ACCOUNT NO. 5100  
**S-687**  
 SHEET 8 OF 12  
 68-PROJECT-NO.





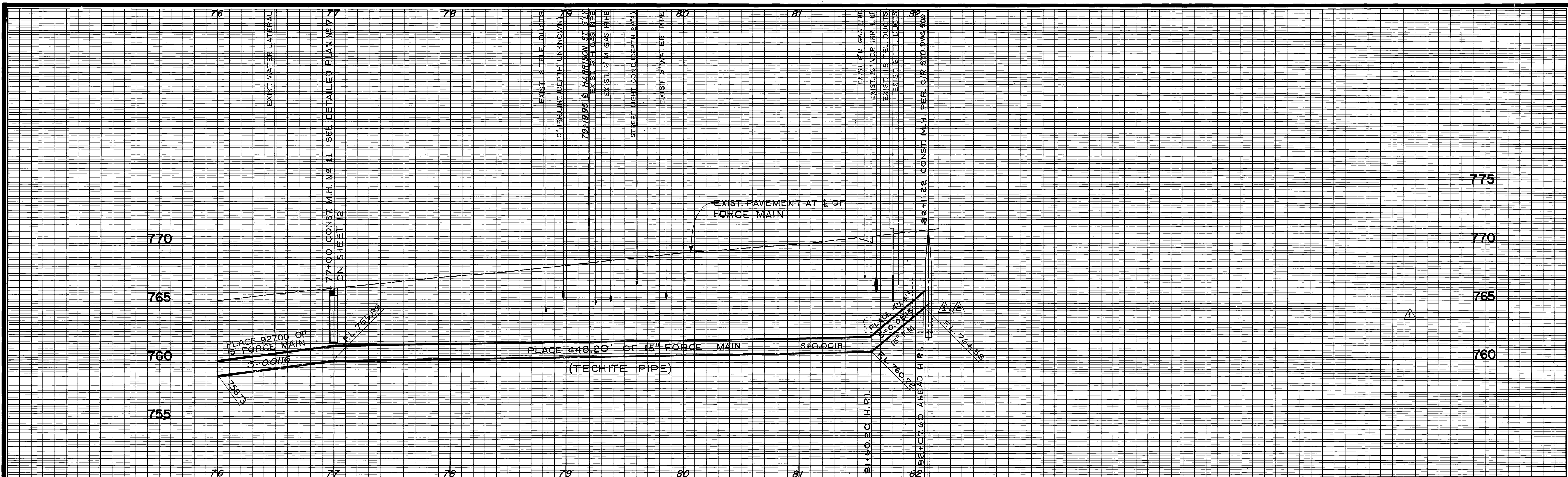
★ 72+70 LONGITUDINAL TYPE OF BREAK ON TOP OF PIPE ON THE DATE OF 1/12/71



NOTE:  
 1. WHERE 15" PIPE IS SHOWN, 14" PIPE MAY BE USED (SEE SPECIAL PROVISIONS).  
 2. FOR ADDITIONAL TRAFFIC SIGNAL CONDUIT LOCATIONS CONTACT TRAFFIC DIVISION AT 787-7366. INDEXED BY CD.

<p align="center"><b>-CAUTION-</b>  <b>PACIFIC TELEPHONE</b>  <b>CABLES UNDERGROUND</b>          BEFORE EXCAVATING          CALL COLLECT:</p> <p align="center">7:30 A.M. to 5 P.M. After Hours &amp; Holidays          Orange County 714-633-0811 714-547-6606          Riverside County 714-684-0071 714-547-6606</p>	<p align="center">CITY OF RIVERSIDE, CALIFORNIA          DEPARTMENT OF PUBLIC WORKS</p>		<p align="center">HOLE AVE. FORCE MAIN          PHASE I</p>		<p>ACCOUNT NO. 5100</p>
	<p>APPROVED BY: <i>[Signature]</i> DATE: 2/1</p> <p>SENIOR ENGINEER</p>		<p>APPROVED BY: <i>[Signature]</i> DATE: 2-7-69</p> <p>DIRECTOR OF PUBLIC WORKS</p>		<p align="center">S-687</p>
<p>DESIGNED BY: DCH DRAWN BY: JH CHECKED BY: DCH</p>		<p>TRAFFIC DIVISION</p> <p>ASSISTANT CITY ENG. <i>[Signature]</i></p>		<p align="center">Plan &amp; Profile          Sta. 65+90.70 to Sta. 76+00</p>	
		<p>HORIZ. SCALE: 1" = 40' VERT. SCALE: 1" = 4'</p>		<p align="center">SHEET 9 OF 12</p>	

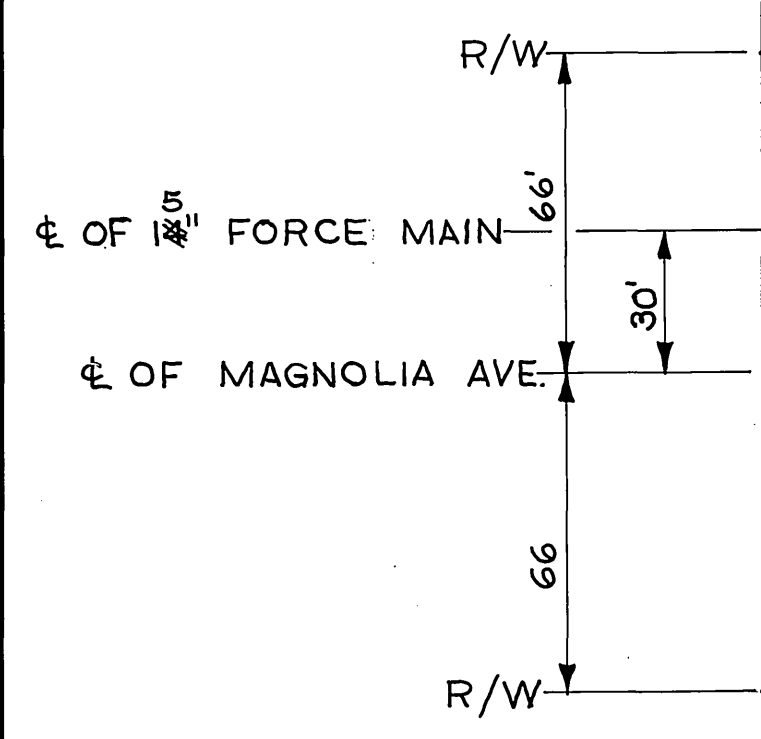
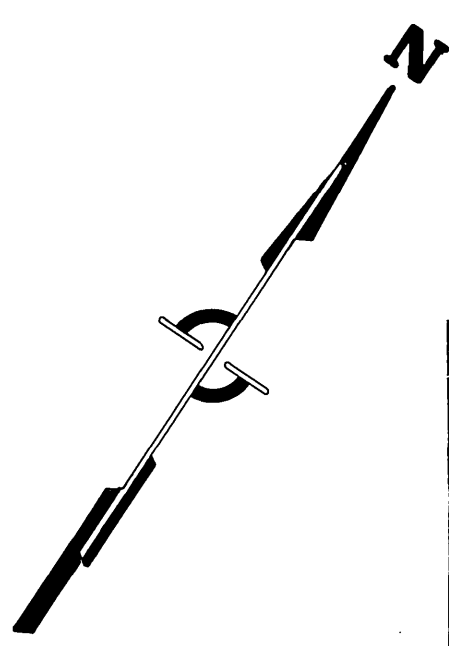




B.M. 757.175 R.R. SPK. IN PEPPER TREE CTR. OF MAG. AVE. 35' ELY. OF C/L MEGGINSON LANE, F.B. 639/12

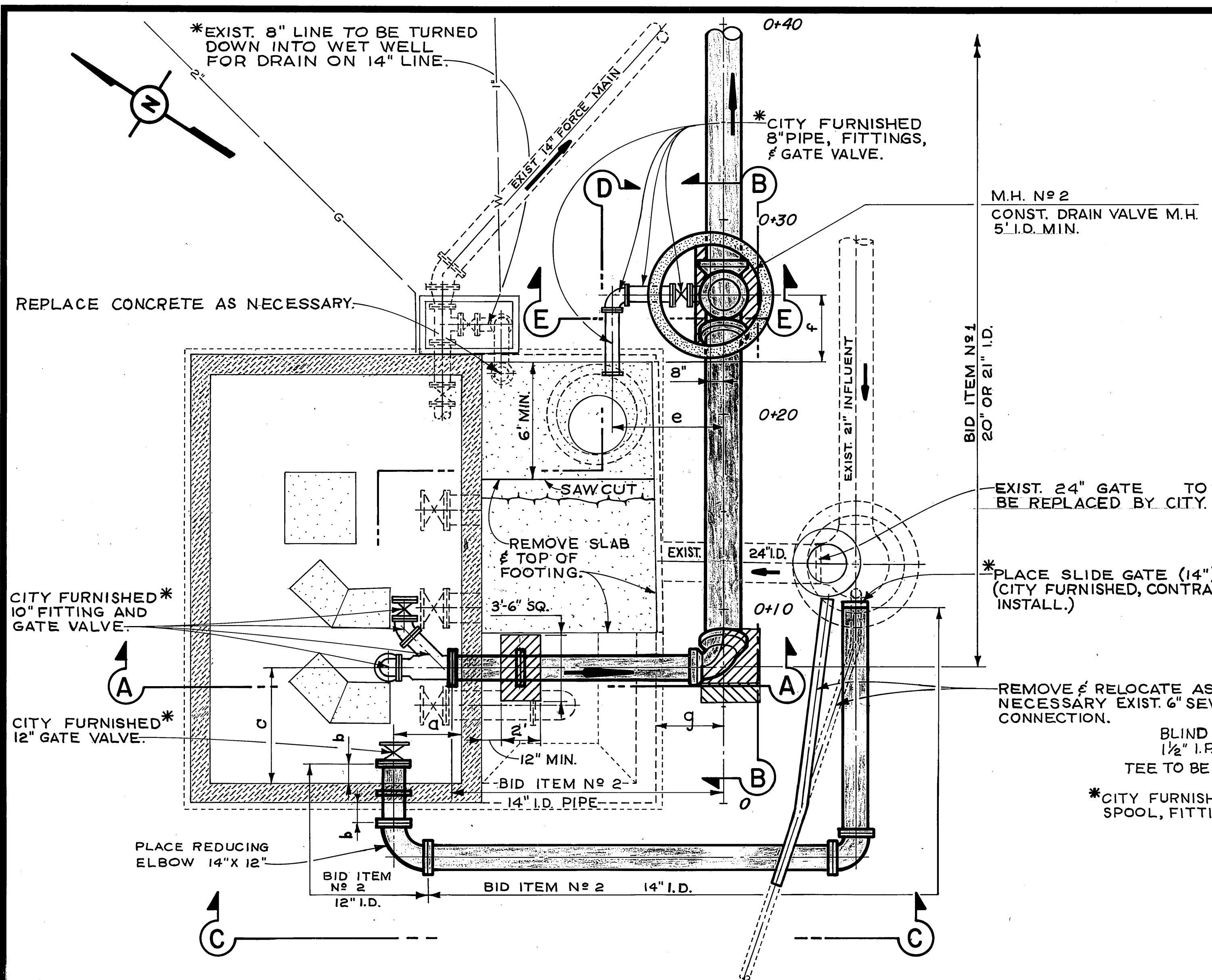
NOTE :  
WHERE 15" PIPE IS SHOWN, 14" PIPE MAY BE USED (SEE SPECIAL PROVISIONS).

★ 82+00 BLOWOUT TYPE OF BREAK LOCATED TO TOP OF PIPE ON THE DATE OF 10/19/70



<p align="center"><b>-CAUTION-</b> PACIFIC TELEPHONE CABLES UNDERGROUND BEFORE EXCAVATING CALL COLLECT</p> <p align="center">After Hours 7:30 A.M. to 5 P.M. &amp; Holidays 714-633-0811 714-547-6606 714-684-0071 714-547-6606</p>	<p>REVISED LOCATION OF END OF LINE. <i>DeH</i></p>	<p align="center">CITY OF RIVERSIDE, CALIFORNIA DEPARTMENT OF PUBLIC WORKS</p>		<p align="center">HOLE AVE. FORCE MAIN PHASE I Plan &amp; Profile Sta. 76+00 to General Hospital</p>	<p align="center">INDEXED BY CD ACCOUNT NO. 5100 <b>S-687</b> SHEET 10 OF 12</p>
	<p>ADDED M.H. PER C.O. N° 1</p>	<p>APPROVED BY <i>[Signature]</i> BY DATE <i>2-23-68</i></p> <p>SENIOR ENGINEER</p>	<p>APPROVED BY <i>[Signature]</i> BY DATE <i>2-23-68</i></p> <p>TRAFFIC DIVISION</p>	<p>APPROVED BY <i>[Signature]</i> BY DATE <i>2-23-68</i></p> <p>DIRECTOR OF PUBLIC WORKS</p>	<p>DATE <i>2-7-68</i></p>
	<p>DESIGNED BY <i>DeH</i> DRAWN BY <i>[Signature]</i> CHECKED BY <i>DeH</i></p>	<p>MARK REVISIONS APPR. DATE</p>	<p>ASSISTANT CITY ENG. <i>[Signature]</i></p>	<p>HORIZ. SCALE: 1" = 40' VERT. SCALE: 1" = 4'</p>	<p>6-6- PROJECT NO.</p>
	<p align="center">SEE DETAILED PLAN N° 8 ON SHEET 12.</p>				



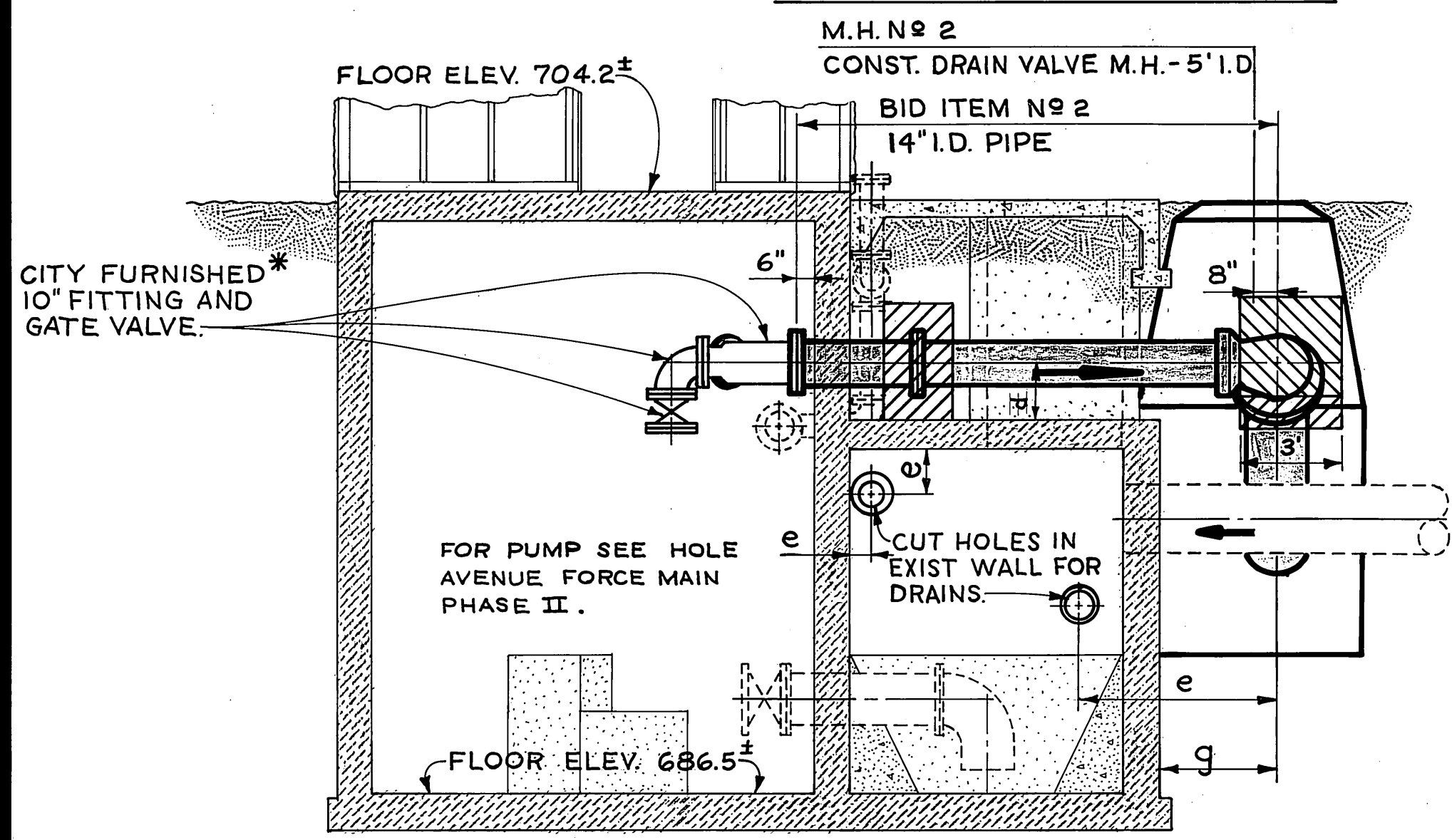


- DIMENSIONS;**
- a. - DEPENDS ON FITTINGS TO BE FURNISHED BY PUMP SUPPLIER.
  - b. - DITTO, 12" MIN.
  - c. - DEPENDS ON PUMP DIMENSIONS.
  - d. - 18"
  - e. CITY FURNISHED SPOOL AND FITTING DIMENSIONS GOVERN.
  - f. - 3' UNLESS CONTRACTOR NEEDS MORE ROOM FOR M.H.
  - g. - MIN. 3'

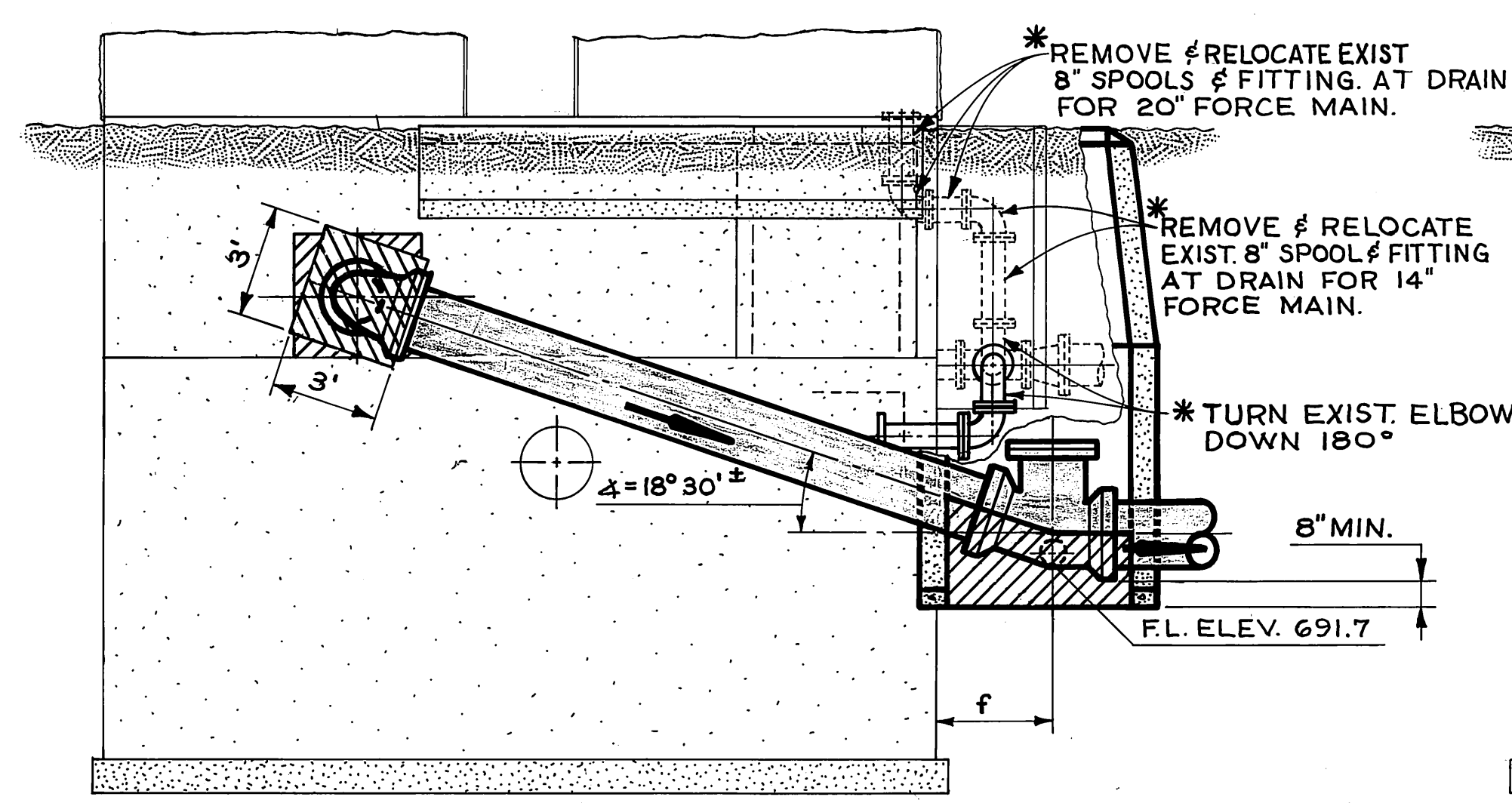
- NOTES;**
1. PAVEMENT REMOVAL AND REPLACEMENT SHALL BE AS DIRECTED BY THE ENGINEER.
  2. ALL FITTINGS MAY BE FLANGED, SLEEVED, OR B.F.S. EXCEPT INSIDE DRY WELL AND WHERE NOTED.
  3. CONTRACTOR SHALL INSTALL CITY FURNISHED FITTINGS AND VALVES WITHIN DRYWELL AND DRAIN M.H. PRIOR TO TESTING THE PIPE RUN. CONTRACTOR TO FURNISH BOLTS AND GASKETS.
  4. FOR REINFORCING STEEL IN EXISTING WALLS SEE DRAWING NO S-511 SHEETS 11 & 12. (AVAILABLE ON REQUEST)
  5. FOR MANHOLE DETAILS NOT SHOWN SEE SHEET 12.

- LEGEND:**
- \* BID ITEM NO 6
  - CONC. THRUST BLOCKS, CONST AGAINST UNDISTURBED GRD., SANDBAG ENDS.

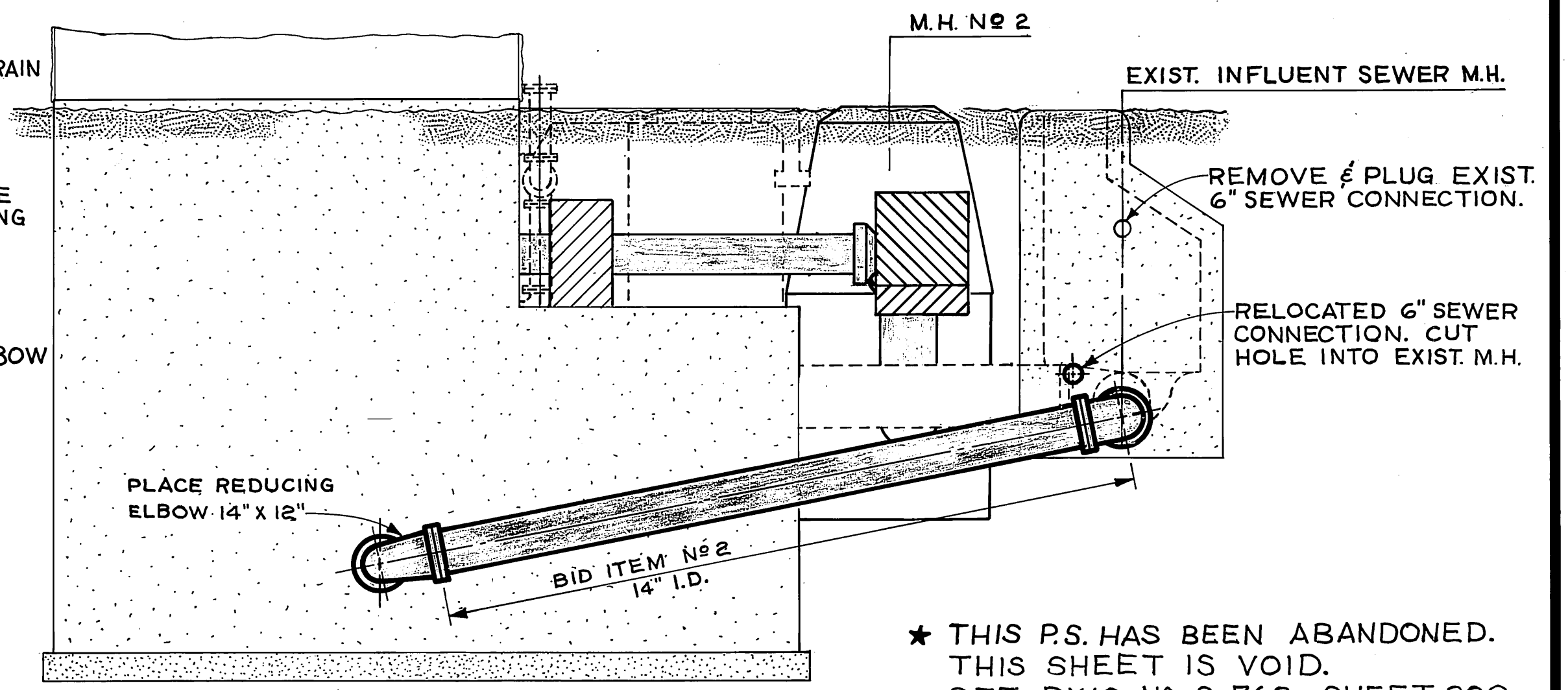
(ABANDONED)  
**DETAILED PLAN NO 1**



**SECTION A-A**

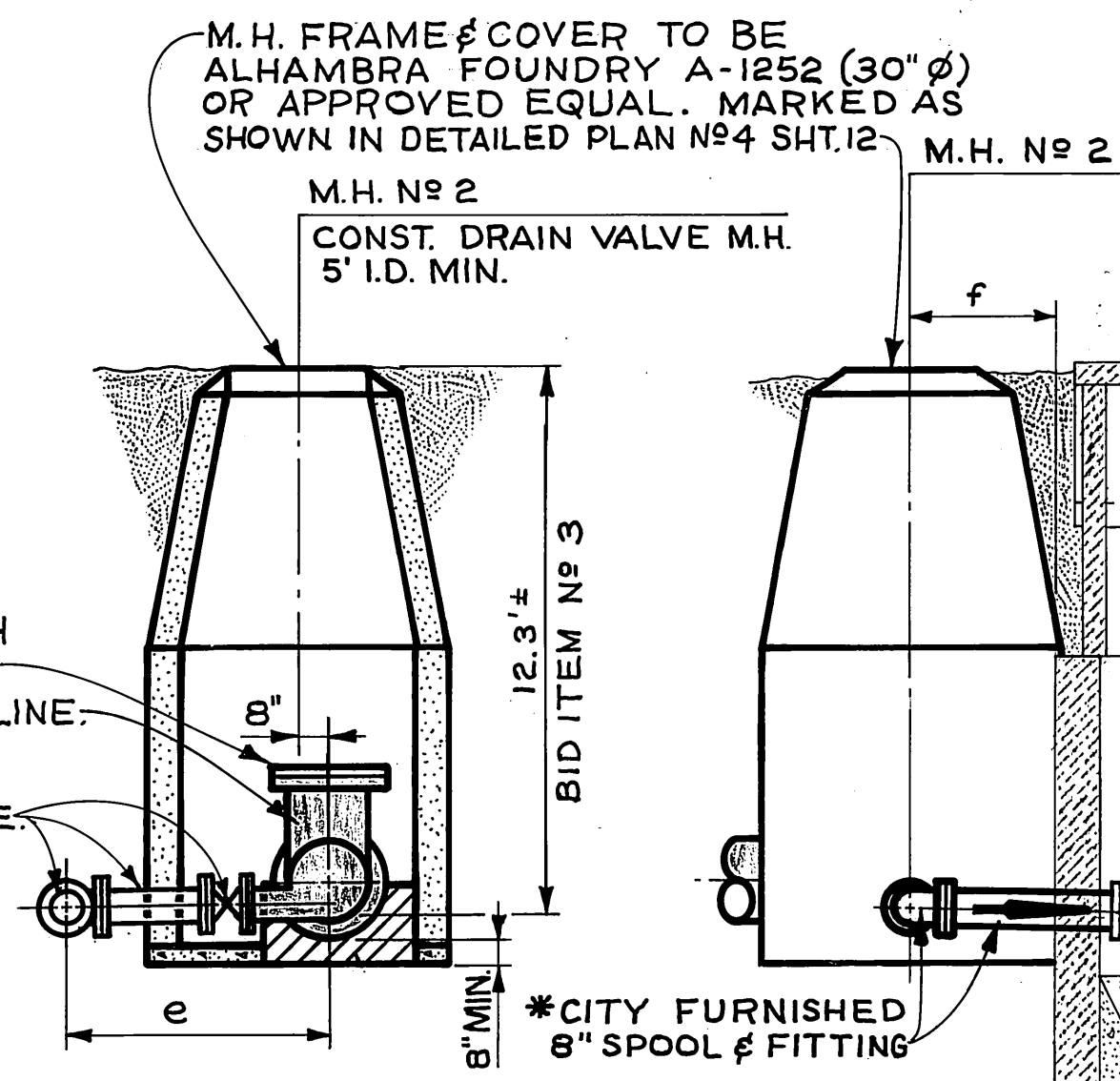


**SECTION B-B**

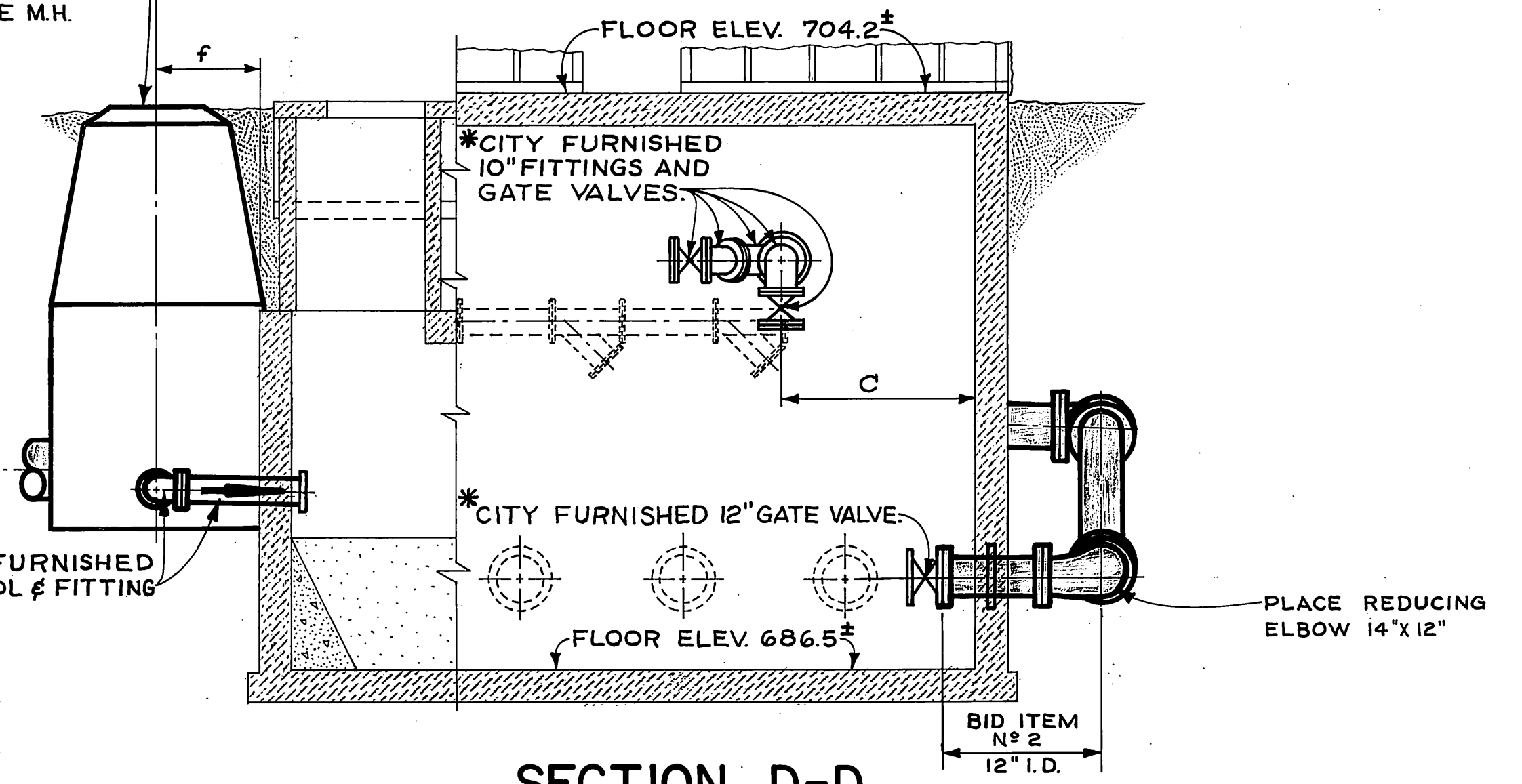


**SECTION C-C**

**SECTION E-E**



**SECTION D-D**

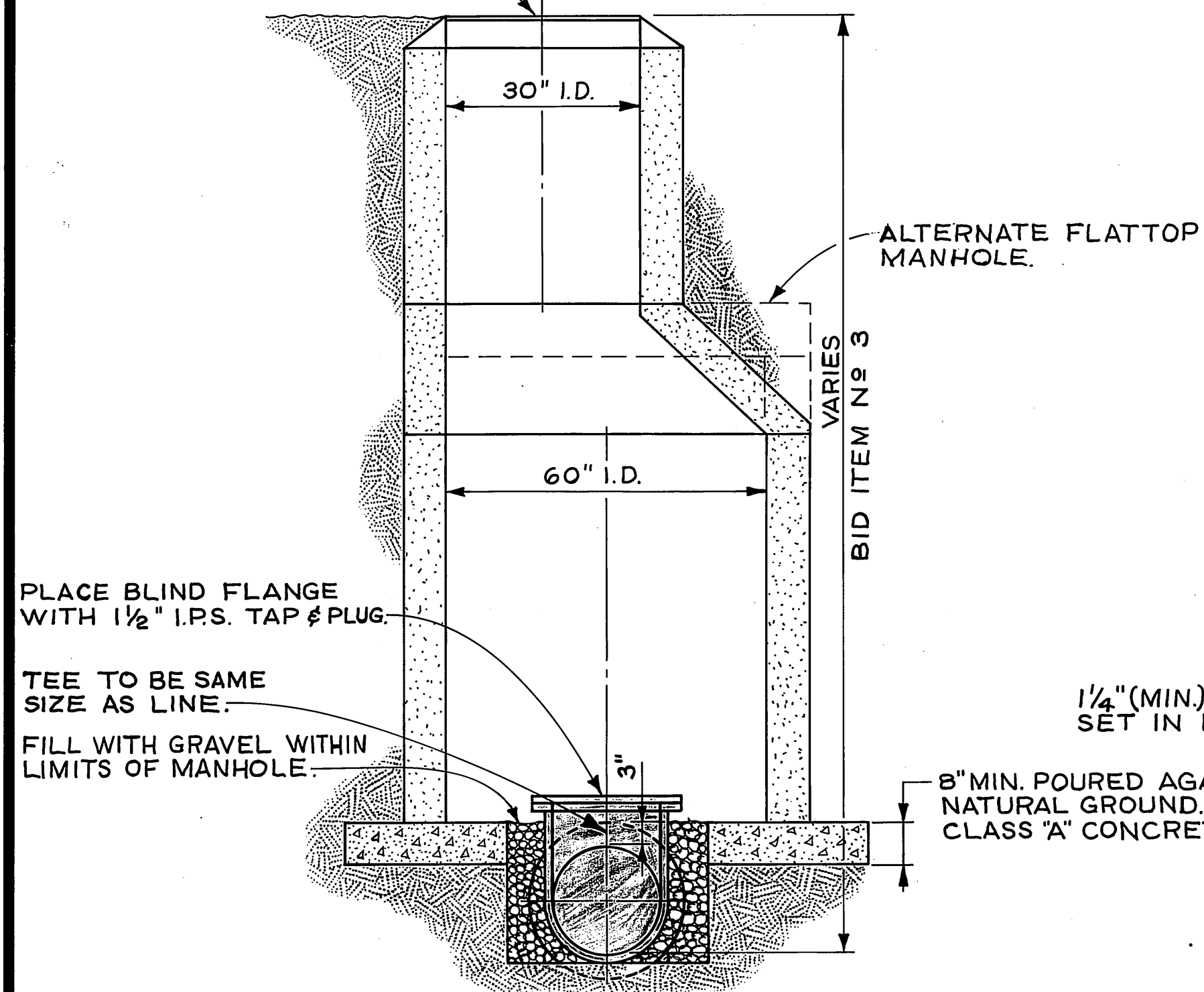


\* THIS P.S. HAS BEEN ABANDONED.  
THIS SHEET IS VOID.  
SEE DWG. NO S-762, SHEET 22G.

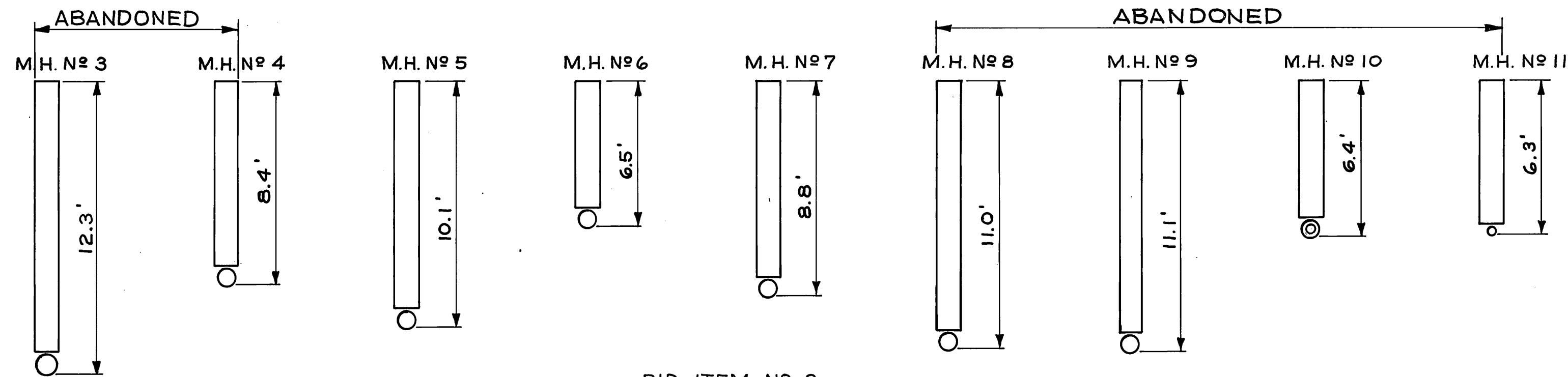
CITY OF RIVERSIDE, CALIFORNIA DEPARTMENT OF PUBLIC WORKS		HOLE AVE. FORCE MAIN PHASE I		ACCOUNT NO. 5100
APPROVED BY: [Signature] DATE: 2-7-48		APPROVED BY: [Signature] DATE: 2-7-48		S-687
OFFICE ENGINEER		DIRECTOR OF PUBLIC WORKS		SHEET 11 OF 12
TRAFFIC DIVISION		ASSISTANT CITY ENG.		SCALE 1" = 4'-0"
DESIGNED BY: DCH	DRAWN BY: [Signature]	APPR. DATE: [Signature]	CHECKED BY: DCH	



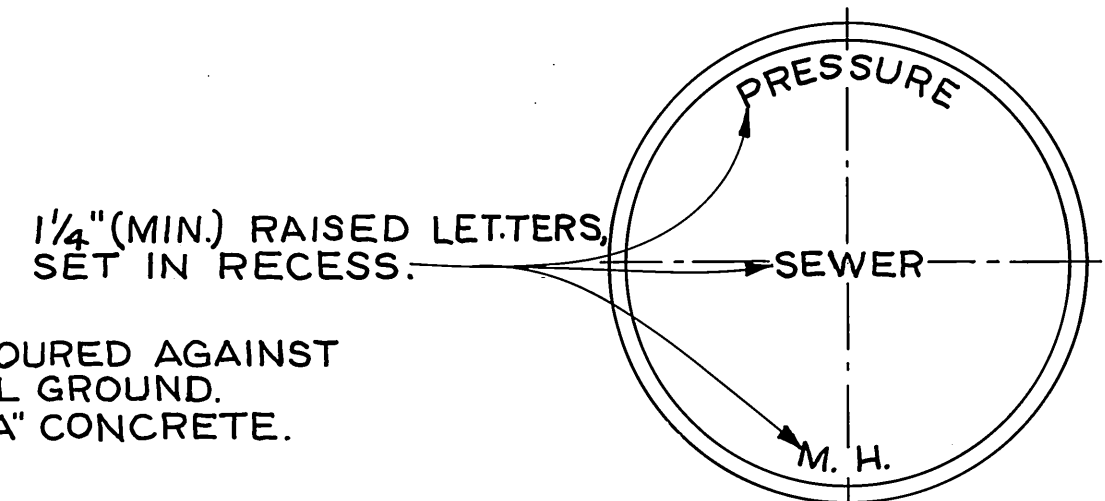
M.H. FRAME & COVER TO BE ALHAMBRA FOUNDRY A-1252 (30" Ø) OR APPROVED EQUAL, MARKED AS SHOWN IN DETAILED PLAN N<sup>o</sup> 4



SECTION F-F



BID ITEM N<sup>o</sup> 3  
**MANHOLE DEPTHS**  
NOT TO SCALE

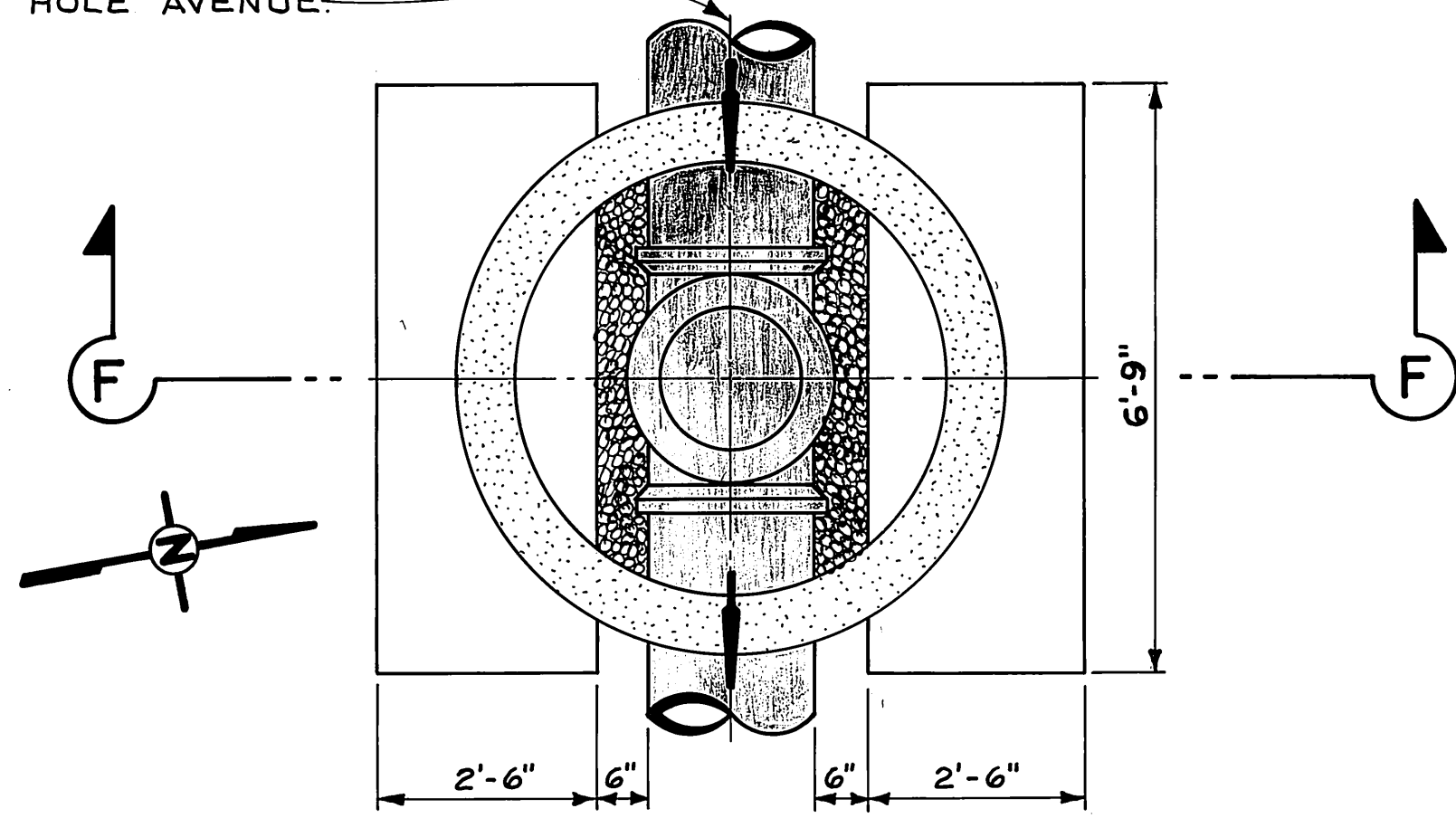


TO BE USED ON MANHOLES 2-11 INCLUSIVE.

**DETAILED PLAN N<sup>o</sup> 4**

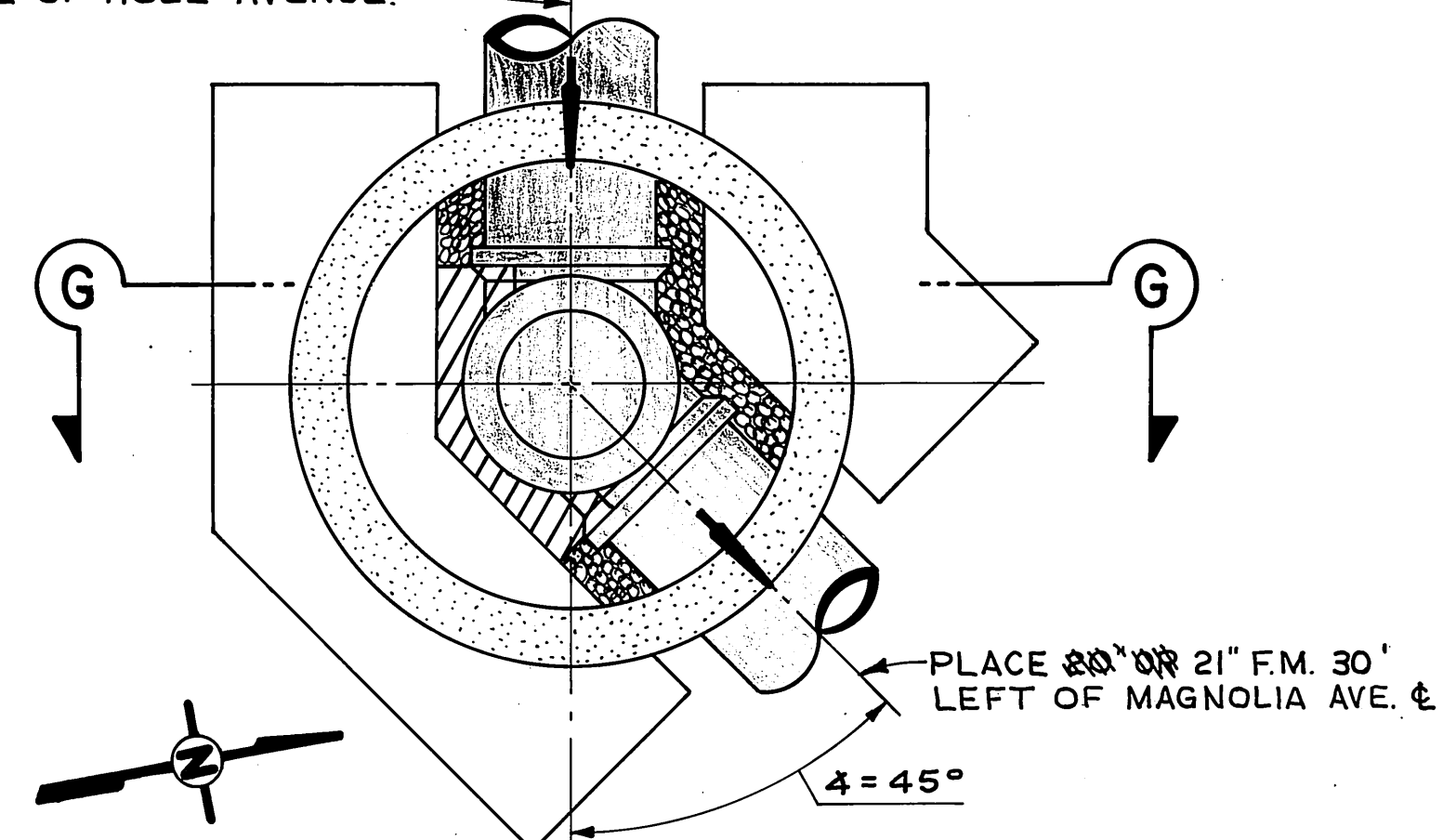
SCALE = 1" = 1'-0"

PLACE 20" OR 21" F.M. ON E. OF HOLE AVENUE.



MANHOLE N<sup>o</sup> 4 THRU 8  
**DETAILED PLAN N<sup>o</sup> 2**

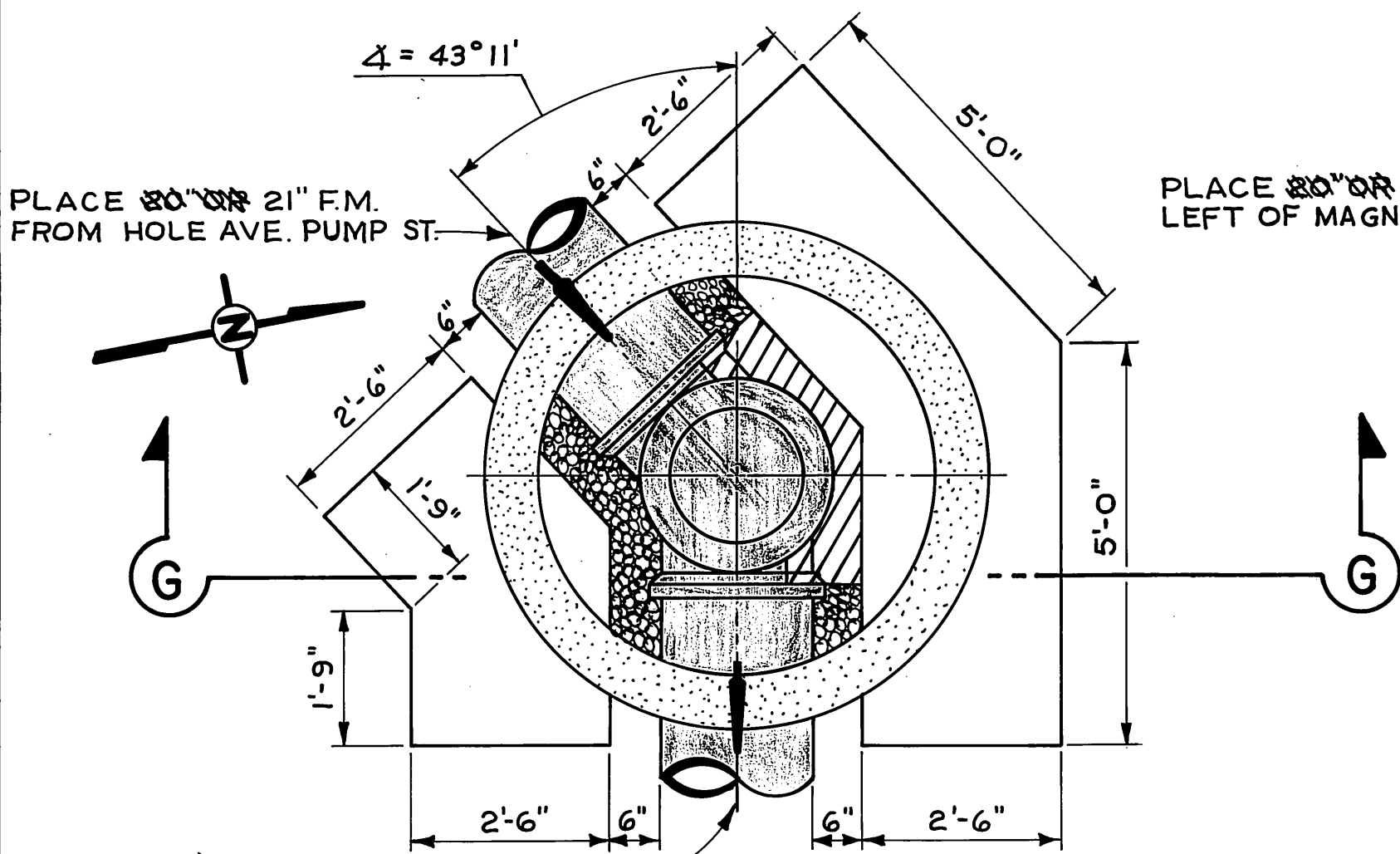
PLACE 20" OR 21" F.M. ON E. OF HOLE AVENUE.



NOTE: ALL DIMENSIONS, EXCEPT AS NOTED, ARE THE SAME AS ON DETAILED PLAN N<sup>o</sup> 3.  
MANHOLE N<sup>o</sup> 9 (ABANDONED)

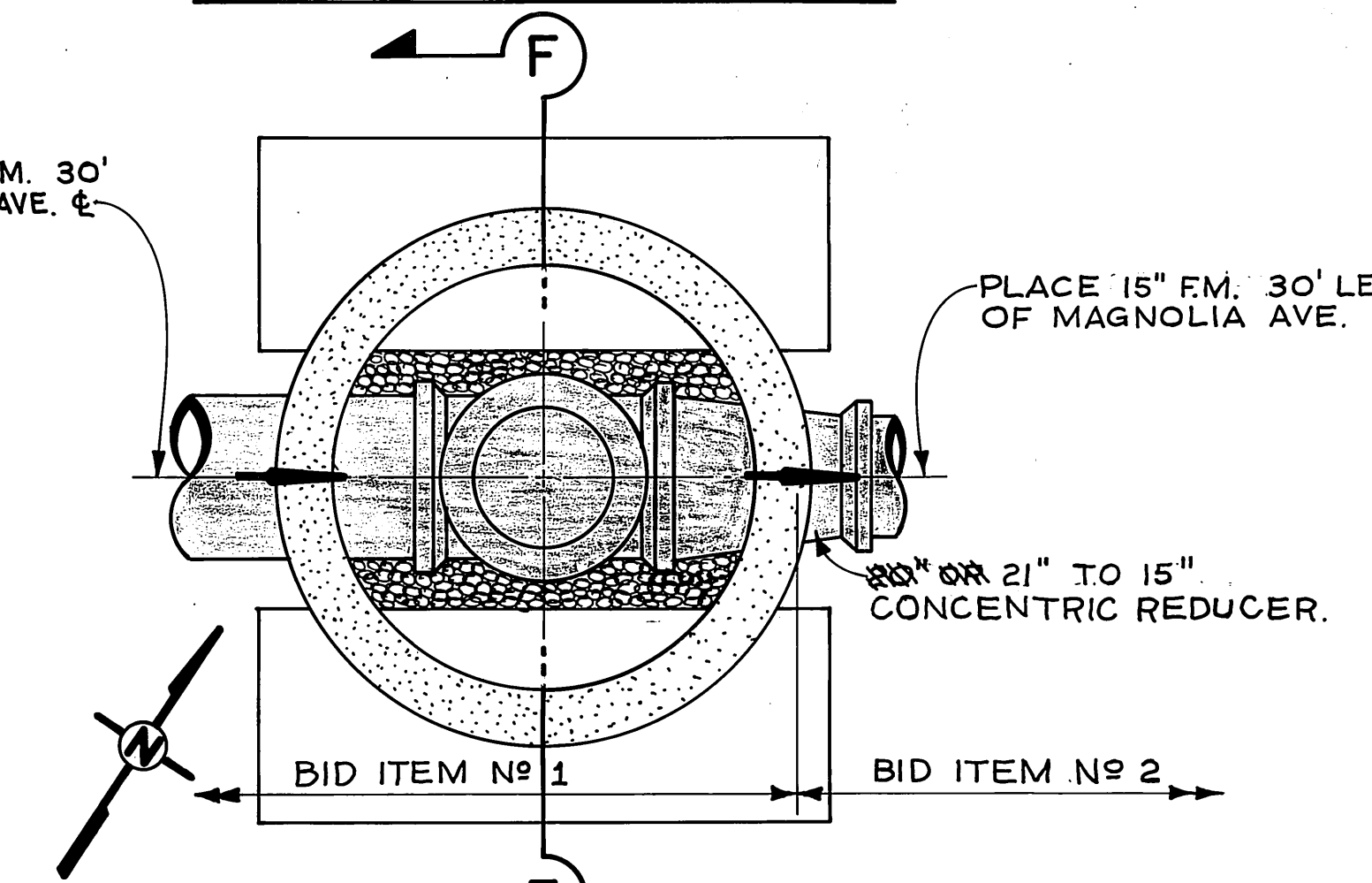
**DETAILED PLAN N<sup>o</sup> 5**

PLACE 20" OR 21" F.M. FROM HOLE AVE. PUMP ST.



MANHOLE N<sup>o</sup> 3  
**DETAILED PLAN N<sup>o</sup> 3**  
(ABANDONED)

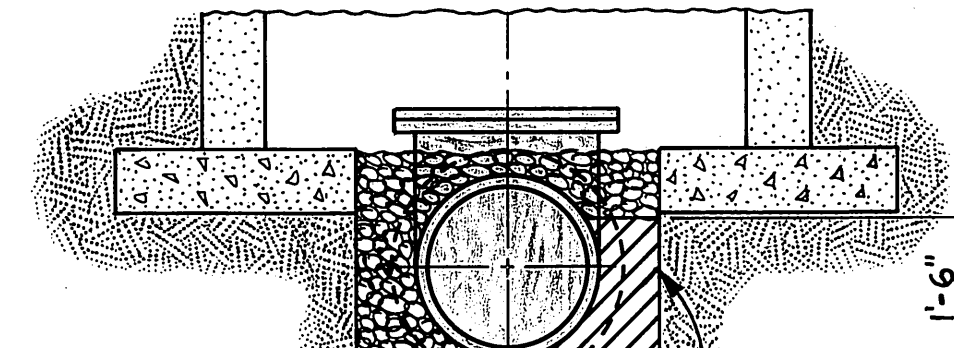
PLACE 20" OR 21" F.M. 30' LEFT OF MAGNOLIA AVE. E.



NOTE: ALL DIMENSIONS, EXCEPT AS NOTED, ARE THE SAME AS ON DETAILED PLAN N<sup>o</sup> 2.

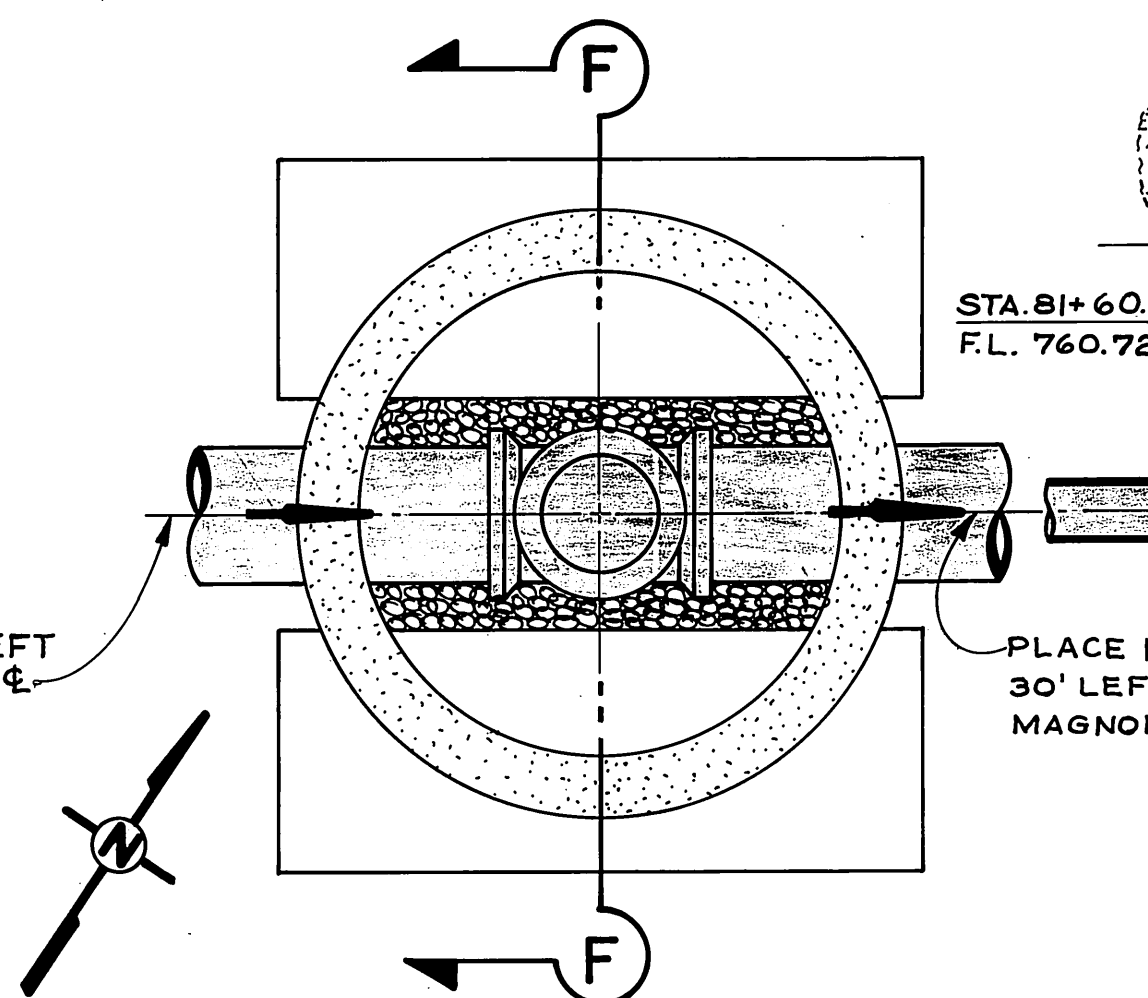
MANHOLE N<sup>o</sup> 10  
**DETAILED PLAN N<sup>o</sup> 6**  
(ABANDONED)

(ABANDONED)



**SECTION G-G**

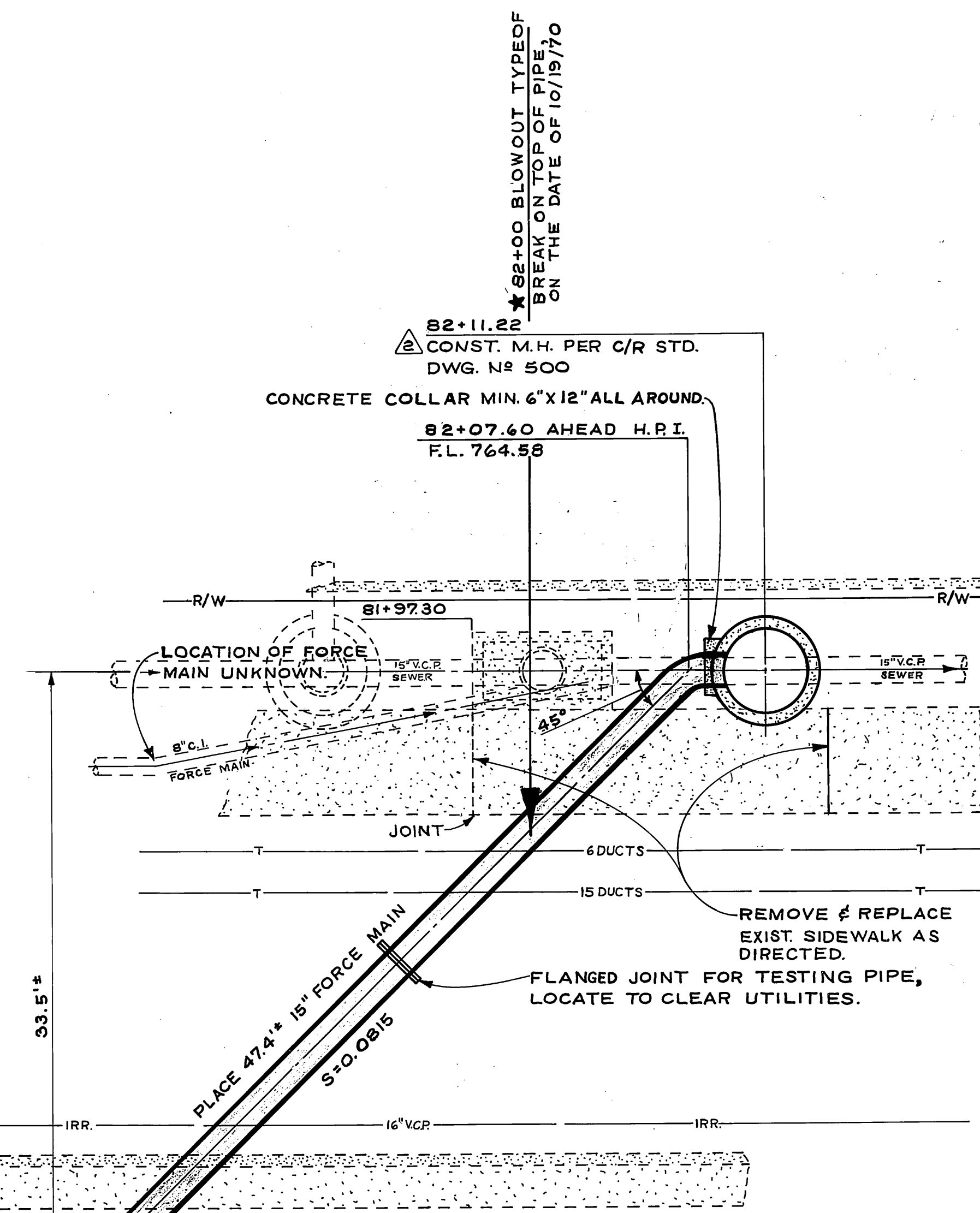
NOTE: ALL DIMENSIONS, EXCEPT AS NOTED, ARE THE SAME AS ON SECTION F-F.



NOTE: ALL DIMENSIONS, EXCEPT AS NOTED, ARE THE SAME AS ON DETAILED PLAN N<sup>o</sup> 2.

**DETAILED PLAN N<sup>o</sup> 7**  
(ABANDONED)

(ABANDONED)



NOTES:  
1. IF MAGNOLIA SEWER, NYE TO SW PUMP STATION IS NOT IN SERVICE BY THE TIME WORK IN THIS VICINITY IS DONE, CONTRACTOR SHALL BUILD M.H. AROUND EXISTING 15" V.C.P. & LEAVE IT IN SERVICE, PUT TEMPORARY PLUG ON END OF 15" F.M. IN M.H.  
2. WHERE 15" PIPE IS SHOWN, 14" PIPE MAY BE USED (SEE SPECIAL PROVISION)  
2. 15" TECHITE PIPE WAS USED ON THIS FORCE MAIN.

(ABANDONED)  
**DETAILED PLAN N<sup>o</sup> 8**  
SCALE 1" = 5'-0"

REVISED LOCATION OF END OF LINE. <i>PCB</i>	DATE: 2-23-68	CITY OF RIVERSIDE, CALIFORNIA DEPARTMENT OF PUBLIC WORKS	HOLE AVE. FORCE MAIN PHASE I Manhole Detailed Plans & Sections	ACCOUNT NO. 5100 <b>S-687</b> SHEET 12 OF 12
ADDED M.H. PER C.O. N <sup>o</sup> 1	DATE: 5-29-68			
APPROVED BY: <i>[Signature]</i>	DATE: 2-7-68	APPROVED BY: <i>[Signature]</i>	SCALE 1" = 2'-0" OR AS NOTED	
DESIGNED BY: DCH	DRAWN BY: <i>[Signature]</i>	CHECKED BY: DCH		