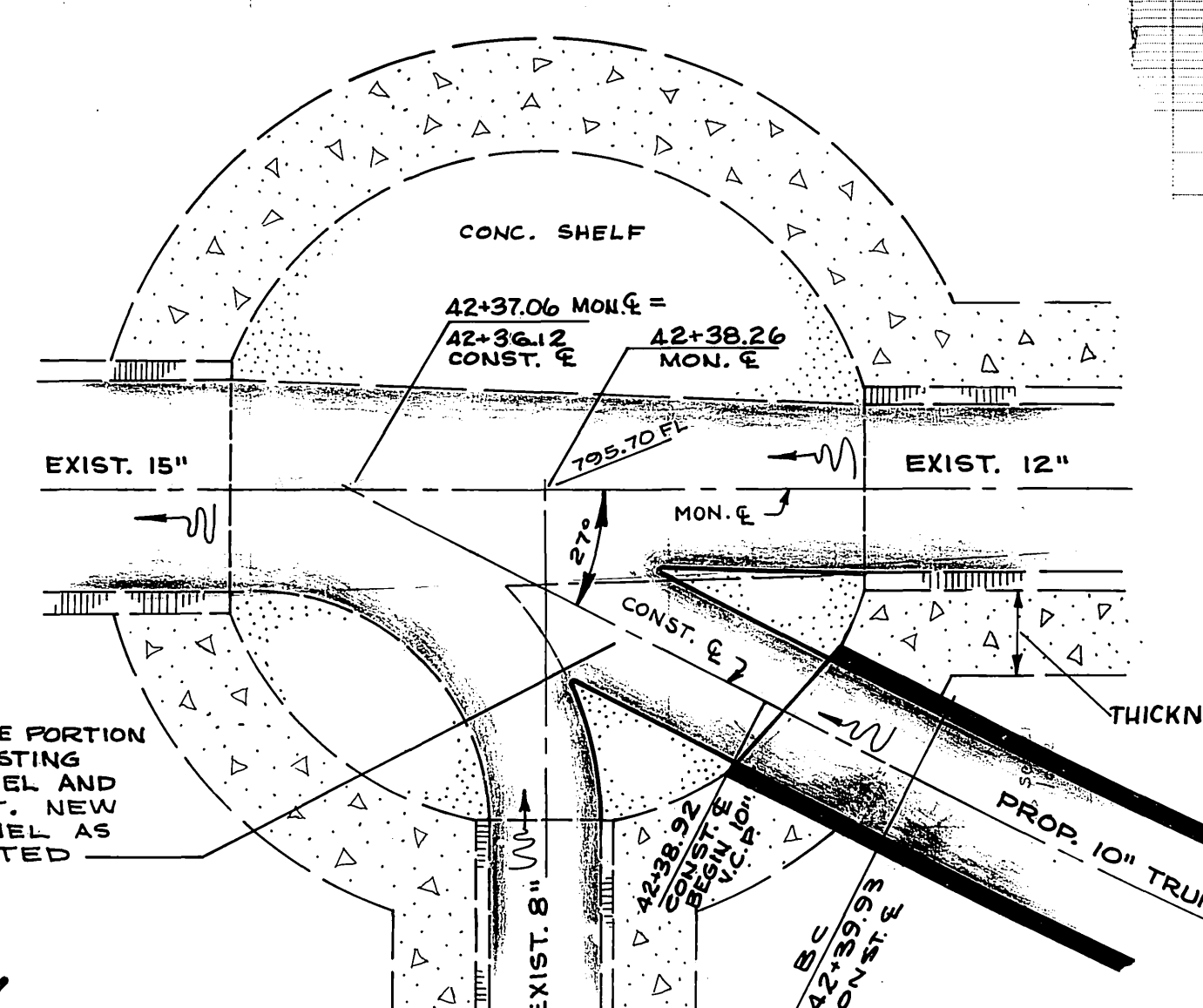


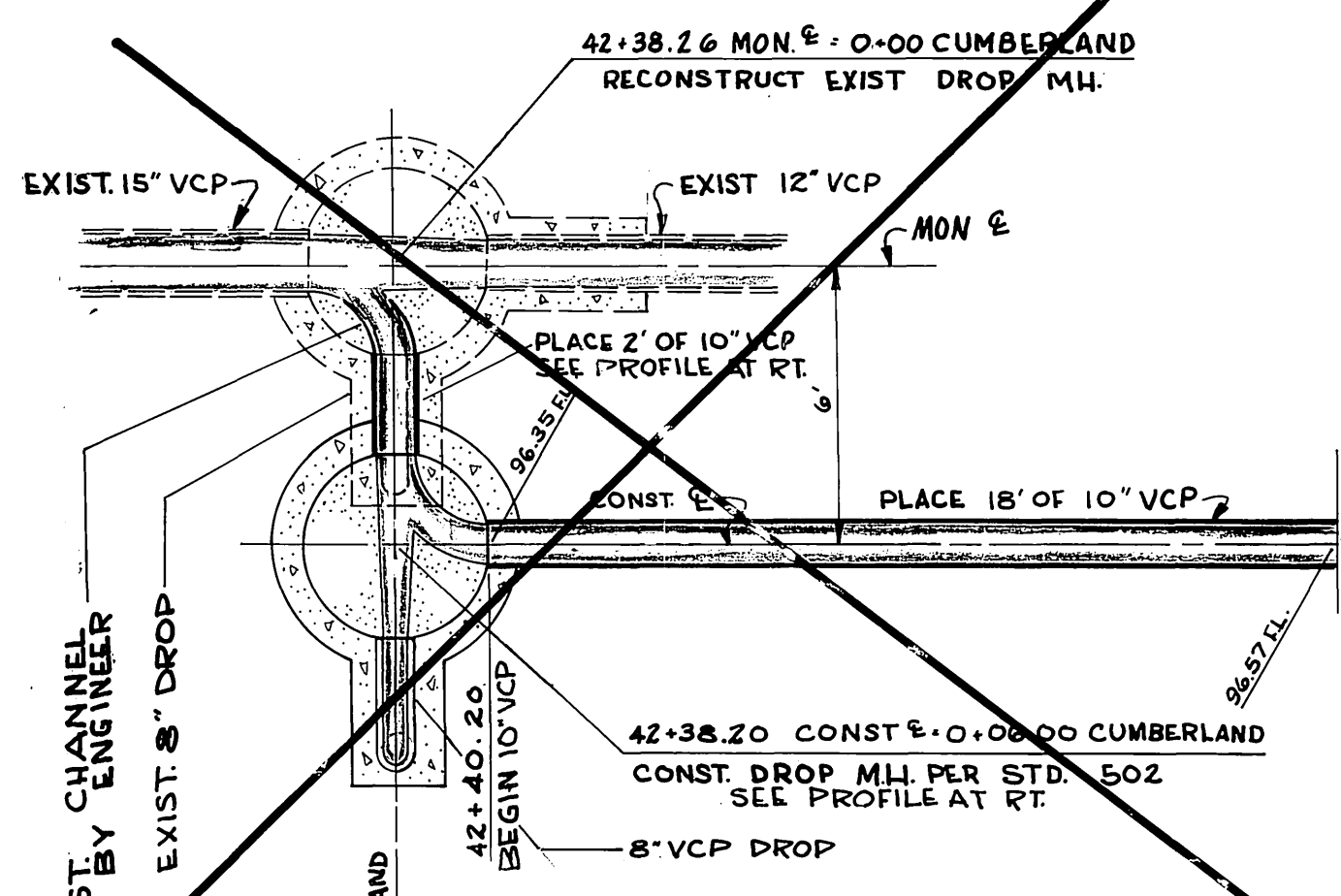
TYPICAL SECTION
SCALE: HOR. 1" = 10', VERT. 1" = 4'

GENERAL NOTES

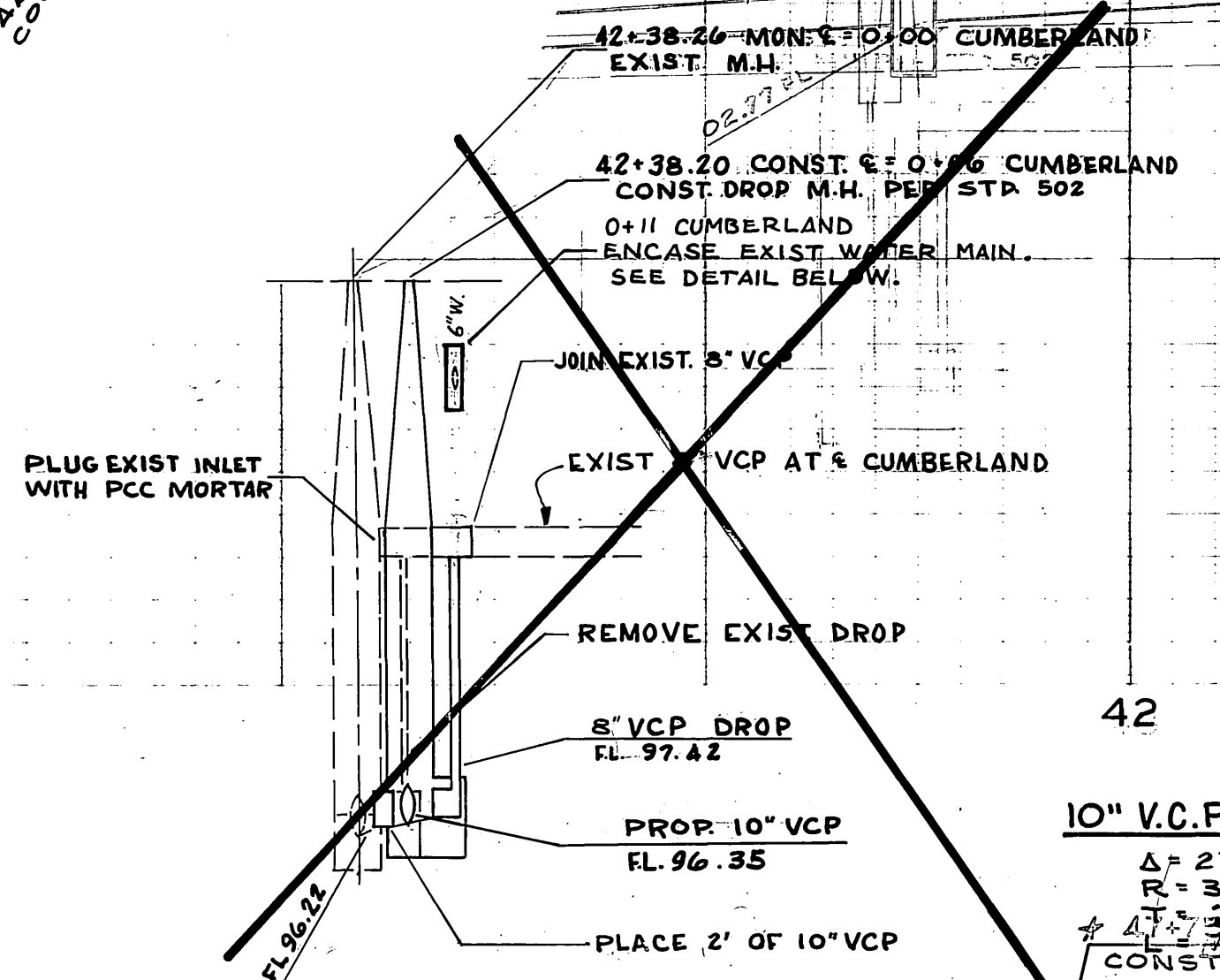
1. THE CONTRACTOR MAY USE APPROVED PRECAST CONCRETE MANHOLE SECTIONS IN LIEU OF BRICK CONSTRUCTION.
2. PIPE SHALL BE BEDDED PER CASE I, STD. DWG. 452
3. MANHOLES SHALL BE SET TO EXISTING GRADE.
4. EXACT DEPTHS OF EXISTING SEWER LATERALS ARE UNKNOWN.
5. THE CONTRACTOR SHALL EXPOSE THE BOTTOM OF THE ELECTRICAL CONDUIT AT STATION 52+91 BEFORE CUT SHEETS ARE ISSUED.
6. CURVES SHALL BE INSTALLED USING 2 FOOT JOINTS WITH 2.9° DEFLECTION PER JOINT EXCEPT AS INDICATED IN THE SPECIAL PROVISIONS.
7. NO PAVEMENT REPLACEMENT OVER TRENCH, EXCEPT AREA IN PALM AVE AS SHOWN ON PLAN. SEE SHEET 3 FOR PAVEMENT REPLACEMENT DETAIL.
8. UPPER 3" OF BACKFILL TO BE 90% RELATIVE COMPACTION. THE REMAINDER SHALL BE 85% RELATIVE COMPACTION.



DETAIL "A"
SCALE 1" = 1'
MANHOLE RECONSTRUCTION AT STA. 42+38.26 MON. E.



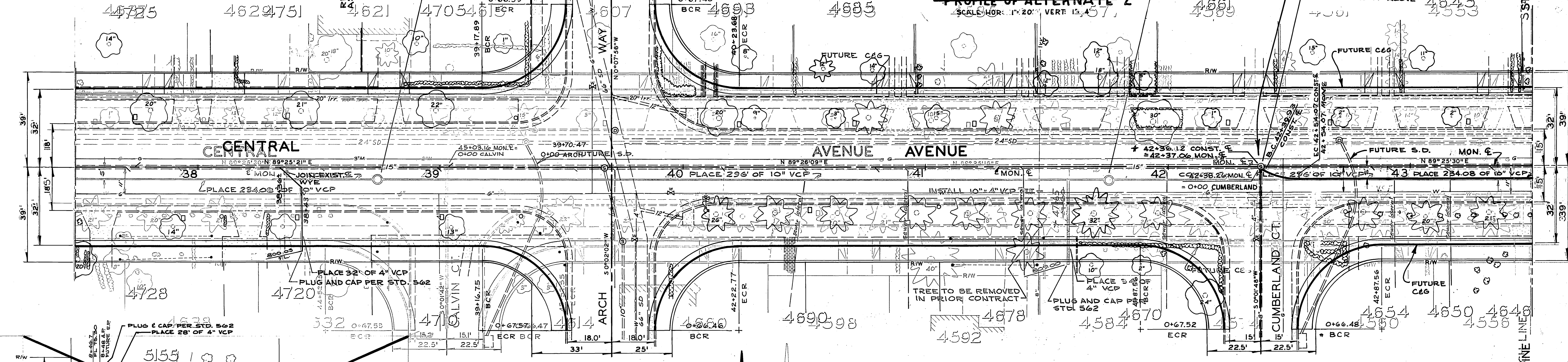
DETAIL OF ALTERNATE 2
SCALE 1" = 4'



PROFILE OF ALTERNATE 2
SCALE: HOR. 1" = 20', VERT. 1" = 5'

10" V.C.P. & CURVE DATA

$\Delta = 27^{\circ}00'00"$
 $R = 330.0'$
 $L = 157.28'$
 $T = 100.0'$
CONST. M.H. PER STD. 500

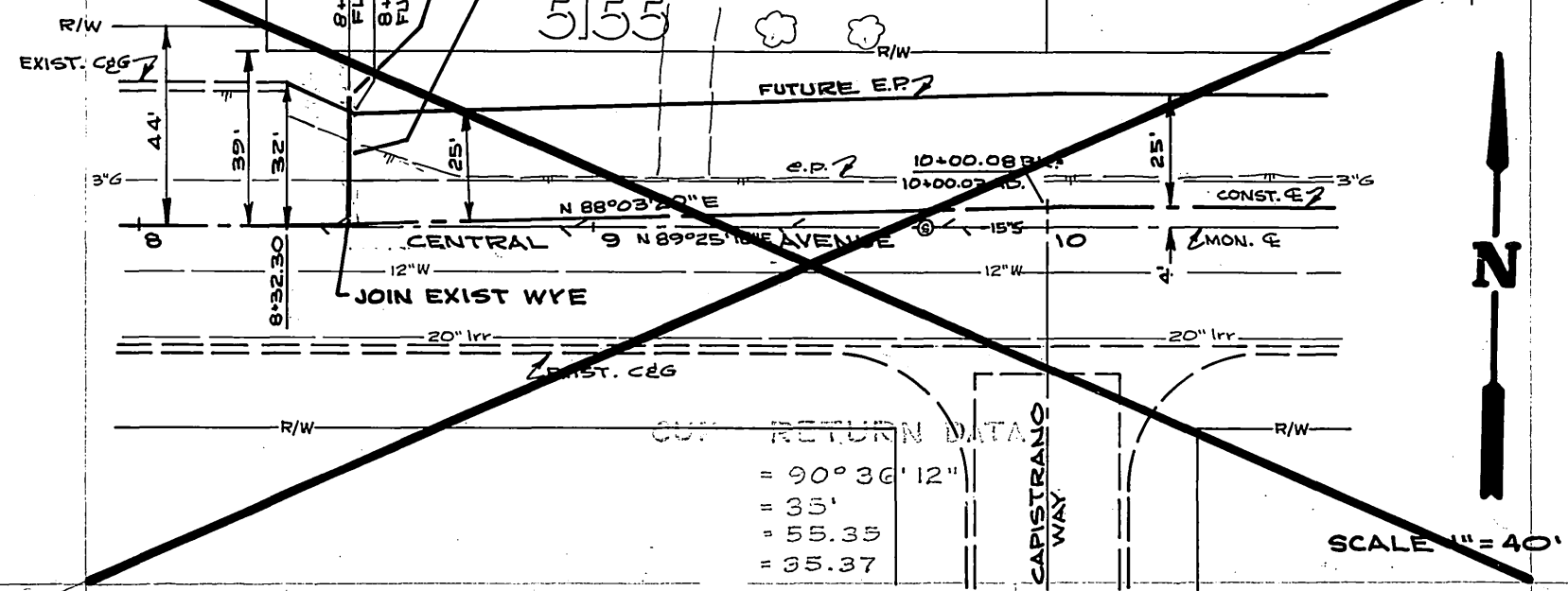


CURB RETURN DATA
 $\Delta = 89^{\circ}24'07"$
 $R = 35'$
 $L = 54.61$
 $T = 34.64$

CURB RETURN DATA
 $\Delta = 90^{\circ}35'39"$
 $R = 35'$
 $L = 55.34$
 $T = 35.37$
* AS BUILT 8-1-69 B.M.

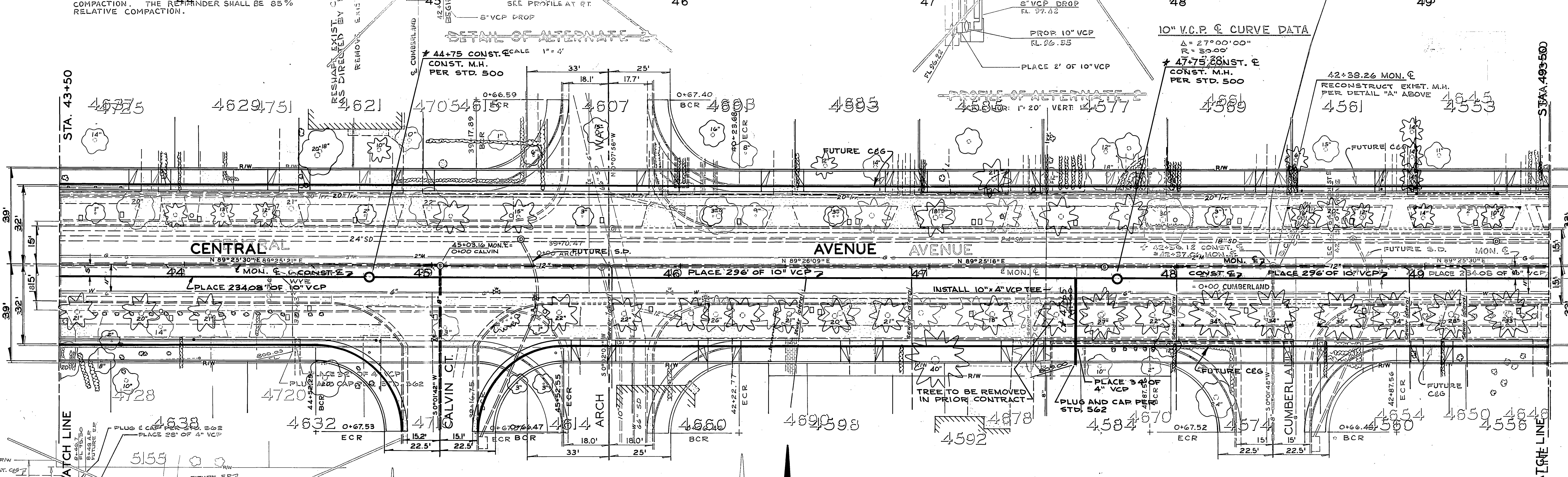
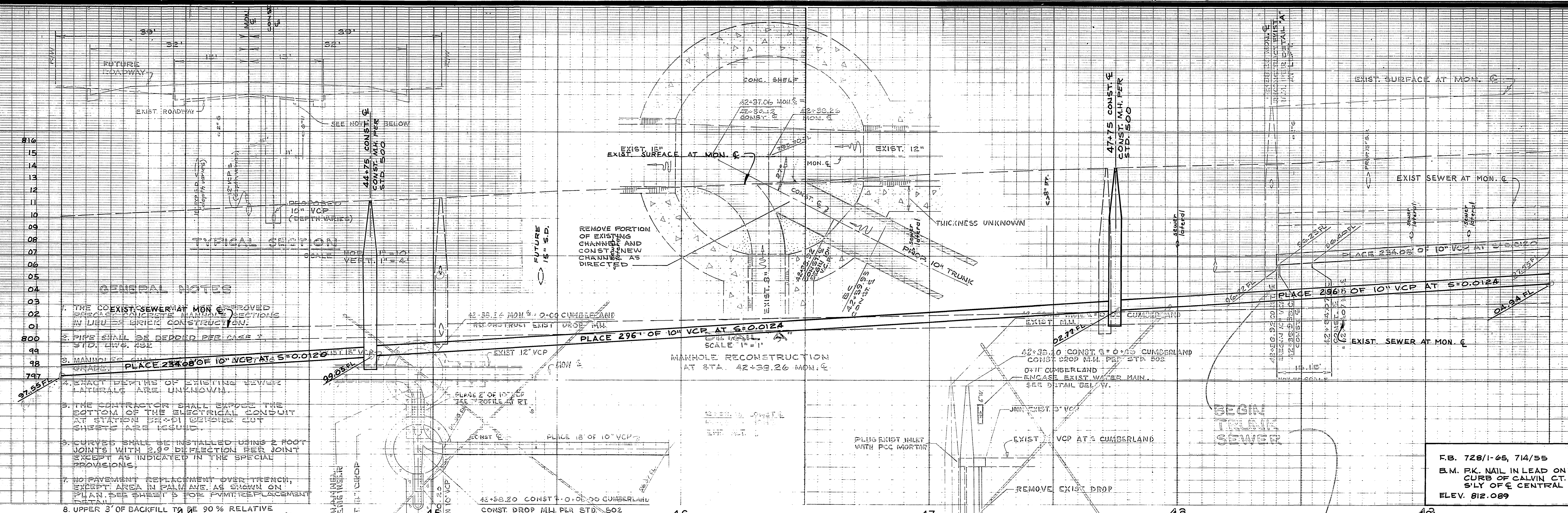
CURB RETURN DATA
 $\Delta = 89^{\circ}23'42"$
 $R = 35'$
 $L = 54.81$
 $T = 34.63$

ALIGNMENT CHANGE PER WATER DIV. 12/17/77		CITY OF RIVERSIDE, CALIFORNIA DEPARTMENT OF PUBLIC WORKS		PROJECT NO. 5113	
APPROVED BY: [Signature]		APPROVED BY: [Signature]		S-689	
DESIGNED BY: [Signature]		DRAWN BY: [Signature]		SHEET 1 OF 3	
CHECKED BY: [Signature]		DATE: 12/11/77		FILE NO.	



ENCASEMENT DETAIL
SCALE 1" = 1'

MATCH LINE LINE S STA. 43+50



CURB RETURN DATA $\Delta = 90^{\circ} 36' 12''$ $R = 35'$ $L = 55.35$ $T = 35.37$		CURB RETURN DATA $\Delta = 89^{\circ} 23' 34''$ $R = 35'$ $L = 54.61$ $T = 34.63$		CURB RETURN DATA $\Delta = 89^{\circ} 24' 07''$ $R = 35'$ $L = 54.61$ $T = 34.64$		CURB RETURN DATA $\Delta = 90^{\circ} 35' 39''$ $R = 35'$ $L = 55.34$ $T = 35.37$ <i>* AS BUILT 8-1-69 B.M.</i>		CURB RETURN DATA $\Delta = 89^{\circ} 23' 42''$ $R = 35'$ $L = 54.81$ $T = 34.63$	
CITY OF RIVERSIDE, CALIFORNIA DEPARTMENT OF PUBLIC WORKS		CITY OF RIVERSIDE, CALIFORNIA DEPARTMENT OF PUBLIC WORKS		CITY OF RIVERSIDE, CALIFORNIA DEPARTMENT OF PUBLIC WORKS		CITY OF RIVERSIDE, CALIFORNIA DEPARTMENT OF PUBLIC WORKS		CITY OF RIVERSIDE, CALIFORNIA DEPARTMENT OF PUBLIC WORKS	
APPROVED BY: [Signature] DATE: 5-77		APPROVED BY: [Signature] DATE: 5-77		APPROVED BY: [Signature] DATE: 5-77		APPROVED BY: [Signature] DATE: 5-77		APPROVED BY: [Signature] DATE: 5-77	
DESIGNED BY: BTG DRAWN BY: [Name] CHECKED BY: [Name]		DESIGNED BY: BTG DRAWN BY: [Name] CHECKED BY: [Name]		DESIGNED BY: BTG DRAWN BY: [Name] CHECKED BY: [Name]		DESIGNED BY: BTG DRAWN BY: [Name] CHECKED BY: [Name]		DESIGNED BY: BTG DRAWN BY: [Name] CHECKED BY: [Name]	

- GENERAL NOTES**
1. THE COEXIST. SEWER AT MON. 6 APPROVED BRICK CONCRETE MANHOLE SECTIONS IN LIEU OF BRICK CONSTRUCTION.
 2. PIPE SHALL BE BEDDED PER CASE 1 STD. LOW. RSE
 3. MANHOLE GRADES: PLACE 234.08 OF 10" VCP AT S=0.0126 (ST. 43+50)
 4. EXACT DEPTHS OF EXISTING SEWER LATERALS ARE UNKNOWN.
 5. THE CONTRACTOR SHALL EXPOSE THE BOTTOM OF THE ELECTRICAL CONDUIT AT STATION 43+50.11 BEFORE CUT SHEETS ARE ISSUED.
 6. CURVES SHALL BE INSTALLED USING 2 FOOT JOINTS WITH 2.0° DEFLECTION PER JOINT EXCEPT AS INDICATED IN THE SPECIAL PROVISIONS.
 7. NO PAVEMENT REPLACEMENT OVER TRENCH, EXCEPT AREA IN PALM AVE. AS SHOWN ON PLAN. SEE SHEET 5 FOR PAVEMENT REPLACEMENT DETAIL.
 8. UPPER 3" OF BACKFILL TO BE 90% RELATIVE COMPACTION. THE REMAINDER SHALL BE 85% RELATIVE COMPACTION.

F.B. 728/1-65, 714/35
 B.M. P.K. NAIL IN LEAD ONLY CURB OF CALVIN CT. 110' S'LY OF E. CENTRAL AVE.
 ELEV. 812.089

10" V.C.P. & CURVE DATA
 $\Delta = 27^{\circ} 00' 00''$
 $R = 39.00'$
 $L = 19.10'$
 $T = 10.23'$
 $\Delta = 27^{\circ} 28' 28''$
 $R = 39.00'$
 $L = 19.10'$
 $T = 10.23'$

ALIGNMENT CHANGE: PERI WATER DIVISION 2-13-66	CITY OF RIVERSIDE, CALIFORNIA DEPARTMENT OF PUBLIC WORKS	CITY OF RIVERSIDE, CALIFORNIA DEPARTMENT OF PUBLIC WORKS	CITY OF RIVERSIDE, CALIFORNIA DEPARTMENT OF PUBLIC WORKS
APPROVED BY: [Signature] DATE: 5-77	APPROVED BY: [Signature] DATE: 5-77	APPROVED BY: [Signature] DATE: 5-77	APPROVED BY: [Signature] DATE: 5-77
DESIGNED BY: BTG DRAWN BY: [Name] CHECKED BY: [Name]	DESIGNED BY: BTG DRAWN BY: [Name] CHECKED BY: [Name]	DESIGNED BY: BTG DRAWN BY: [Name] CHECKED BY: [Name]	DESIGNED BY: BTG DRAWN BY: [Name] CHECKED BY: [Name]

CENTRAL AVE. TRUNK SEWER
 CUMBERLAND TO PABMM
 PROJECT NO. 5113
S-689
 SHEET 2 OF 33
 HORIZ. SCALE: 1" = 20'
 VERT. SCALE: 1" = 4'
 FILE NO.

