

NOTE: BEFORE EXCAVATING Call Gate Canal Co., 683-8228, Bob Schulte.

* AS BUILT 8-22-67 K5

-CAUTION- PACIFIC TELEPHONE CABLES UNDERGROUND BEFORE EXCAVATING

CALL COLLECT:

Orange County	714-633-0811	714-547-6606
Riverside County	714-684-0071	714-547-6606
Inyo County	714-684-0071	714-547-6606
San Bernardino County	714-684-0071	714-547-6606
Los Angeles County	213-621-3111	24 HOUR SERVICE
Ventura County	213-621-3111	
San Diego County	714-298-0595	714-232-0027

FOR FREE CABLE LOCATING SERVICE

Approved By Irrigation Div.
Edward J. O'Connell
 CIVIL ENGINEER
 DATE 6-5-67

ALBERT A. WEBB ASSOCIATES
 CIVIL ENGINEERS
 RIVERSIDE, CALIFORNIA

APPROVED BY: *Albert A. Webb* DATE 4/10/67
 R.E. No. 9876

CITY OF RIVERSIDE, CALIFORNIA
 DEPARTMENT OF PUBLIC WORKS

APPROVED BY: *John J. ...* DATE 6-15-67
 OFFICE ENGINEER
 PARK DEPARTMENT
 TRAFFIC DIVISION
 ASSISTANT CITY ENG.

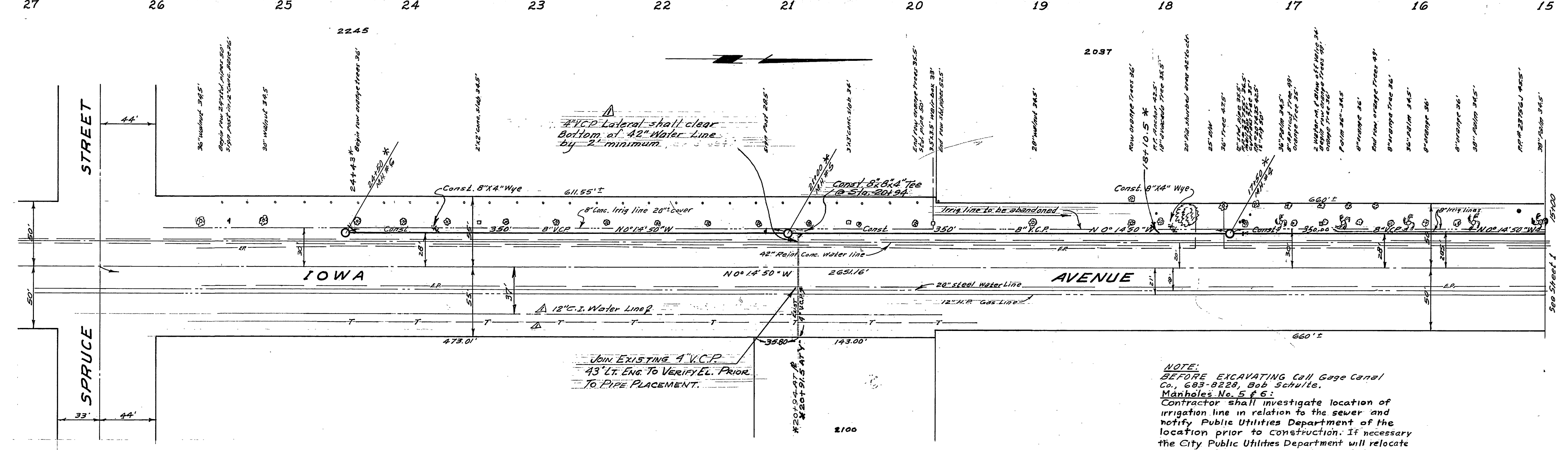
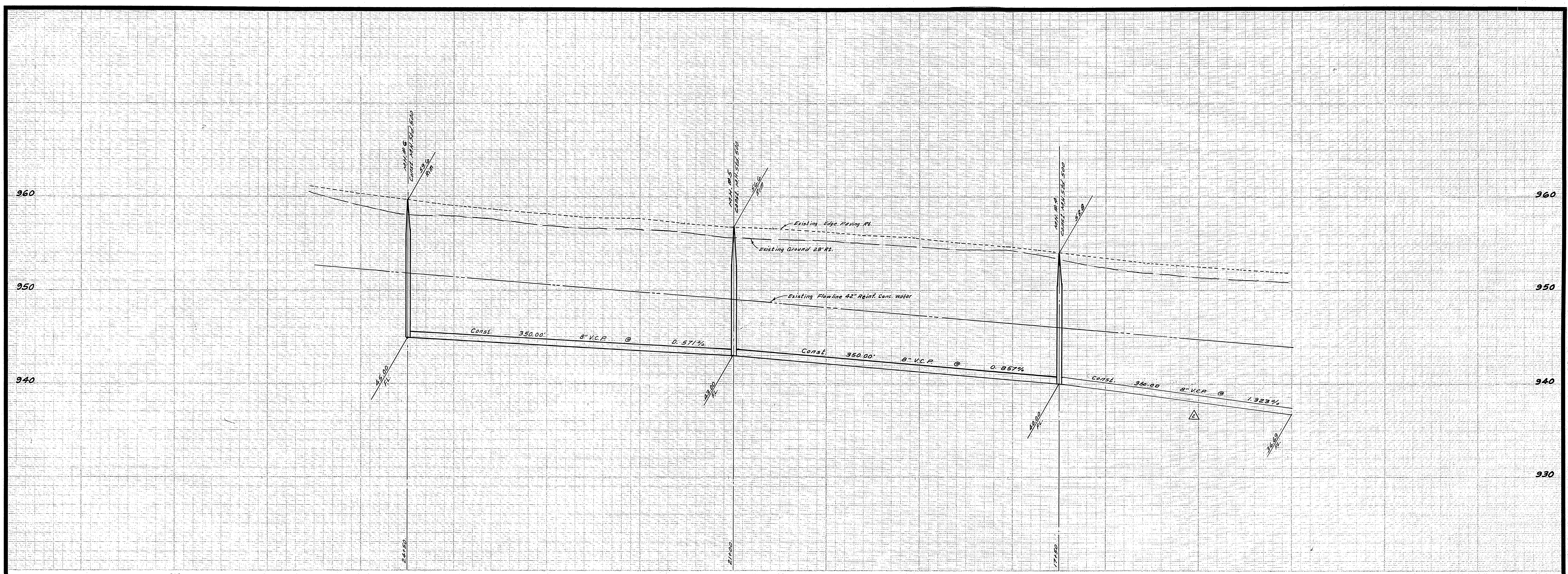
SEWER PLAN & PROFILE

IOWA AVENUE
 OFFSITE SEWER EXTENSION
 698' South of Marlborough Ave. to Spruce St.

PROJECT NO. S-694
 SHEET 1 OF 2
 FILE NO. 67-84-B

QUANTITY ESTIMATE

8" Vitrified Clay Pipe	1752 LF.
Manhole Standard No. 500	6 Ea.
18" I.D. smooth steel pipe	45 LF.
6" Vitrified Clay Pipe	29 LF.
8"x4" Wye	3 Ea.
4" Vitrified Clay Pipe	81 LF.
Chimney Standard No. 561 (5 feet)	1 Ea.



BENCH MARK
Elev. 927.56, Railroad spike in power pole No. 183083 located at the north west corner of Iowa Ave. and Marlborough Ave.

STREET 44'
SPRUCE 33'
IOWA AVENUE
473.01'
2100
660.5'

*AS BUILT 8-23-67 K3

NOTE:
BEFORE EXCAVATING Call Gage Canal Co., 683-8228, Bob Schulte.
Manholes No. 5 & 6:
Contractor shall investigate location of irrigation line in relation to the sewer and notify Public Utilities Department of the location prior to construction. If necessary the City Public Utilities Department will relocate the irrigation line around the manholes.

Approved By Irrigation Div.
Howard L. O'Connell
GEN. SUPT. CHIEF ENGINEER
DATE 6-5-67

ALBERT A. WEBB ASSOCIATES
CIVIL ENGINEERS
RIVERSIDE, CALIFORNIA
APPROVED BY *A. Webb* DATE 4/15/67
R.E. No. 3876

DESIGNED BY	REVISIONS	APPR. DATE
BEEL	1. revised grade from 175.50 to 175.50 E.W. 7/24/67	W.L.B. 7/24/67
	2. Water & Gas Line Added/Clipping Removed 7/26/67	W.L.B. 7/26/67
		6-20-67
		6-15-67

CITY OF RIVERSIDE, CALIFORNIA DEPARTMENT OF PUBLIC WORKS		
APPROVED BY	BY	DATE
OFFICE ENGINEER	<i>John Smith</i>	6-15-67
PARK DEPARTMENT		
TRAFFIC DIVISION		
ASSISTANT CITY ENGINEER		

SEWER PLAN & PROFILE		PROJECT NO.
IOWA AVENUE		5-694
OFFSITE SEWER EXTENSION		
698' South of Marlborough Ave. to Spruce St.		SHEET 2 OF 2
HORIZ. SCALE: 1" = 50'	VERT. SCALE: 1" = 5'	FILE NO. 67-81-B