

INDEX		
SHEET 1	TITLE SHEET	
" 2	LATERAL EXTENSIONS	STA. 8+00 TO STA. 13+00
" 3	"	STA. 13+00 TO STA. 18+00
" 4	"	STA. 23+50 TO STA. 29+00
" 5	PLAN & PROFILE OF SEWER EXTENSION,	STA. 33+25 TO STA. 35+12

RIVERSIDE CALIFORNIA



DEPARTMENT OF PUBLIC WORKS MADISON STREET SEWER Lateral Extensions, Evans to Lincoln & Sewer Extension - Sta. 33+24 to Sta. 35+11.20

CONSTRUCTION LEGEND

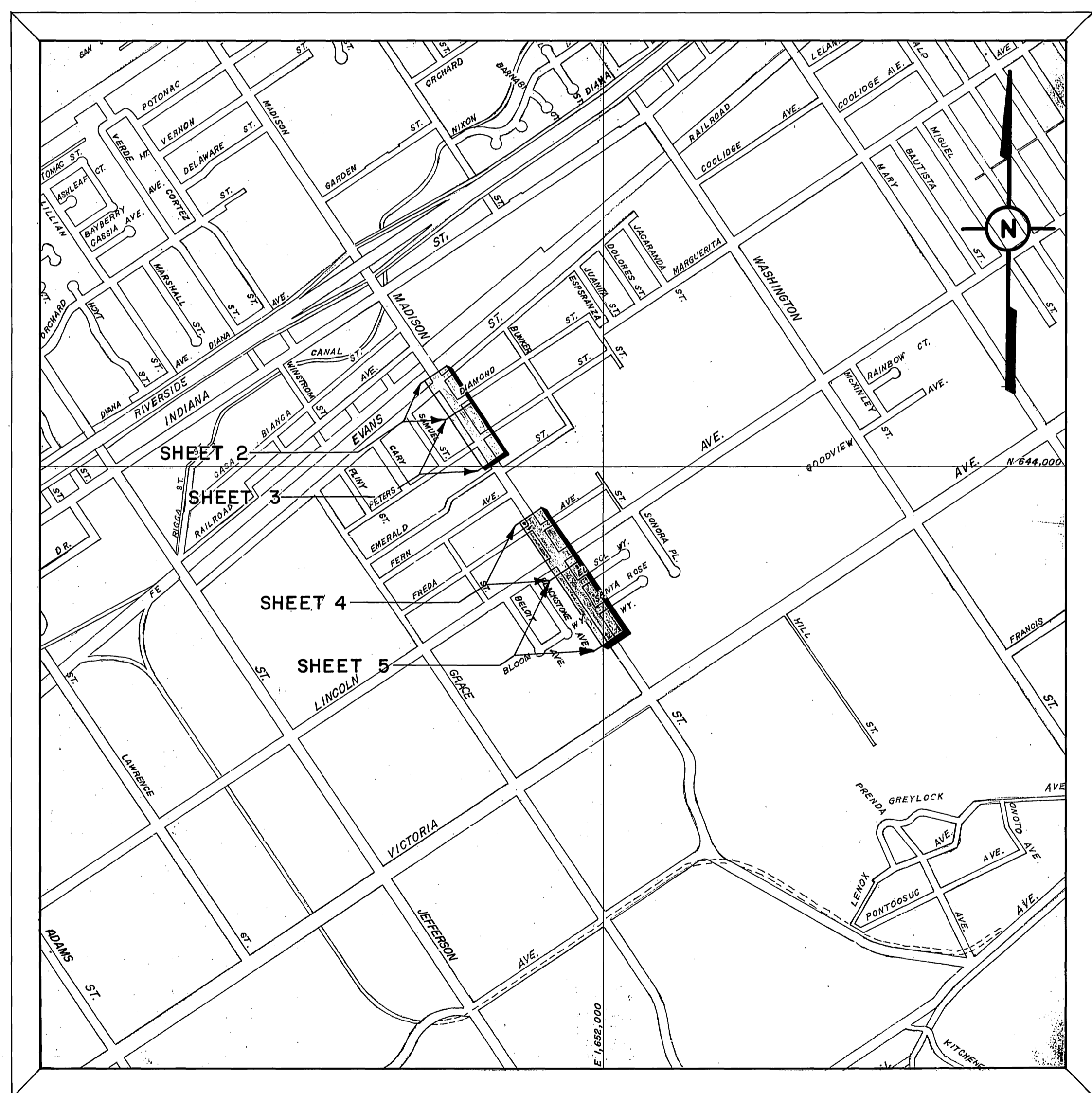
	CONSTRUCT CURB & GUTTER PER C/R STD. DWG. 200		M.H. WYE LATERAL
	CONSTRUCT DRIVEWAY APPROACH PER C/R STD. DWG. 302		SANITARY SEWER
	CONSTRUCT SIDEWALK PER C/R STD. DWG.		STORM DRAIN
	CONSTRUCT A.C. OVERLAY		REMOVE TREE
	REMOVE EXISTING A.C. & CONCRETE AS NOTED.		TRANSPLANT TREES
			ADJUST EXISTING MANHOLE TO GRADE.

CENTER LINE	— C —
RIGHT-OF-WAY LINE	— R/W —
SUBDIVISION LOT LINE	— L —

EXISTING CULTURE & UNDERGROUND LEGEND

EXISTING UNDERGROUND UTILITIES

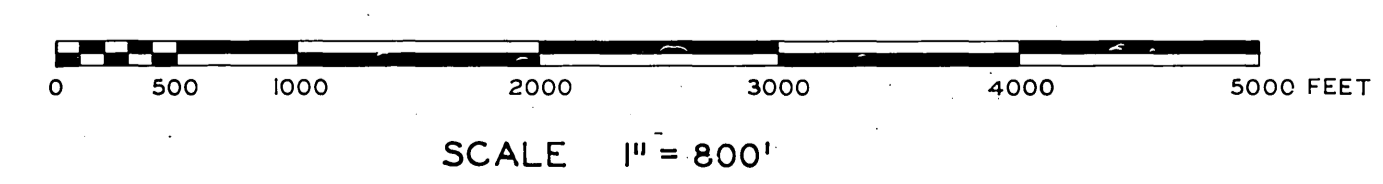
SANITARY SEWER	— 8" VCP — S —	TELEPHONE CONDUIT	— T — — T —
WATER LINE	— 6" CI — W —	ELECTRICAL CONDUIT	— E — — E —
STORM DRAIN	— 24" RCP — SD —	STREET LIGHTING	— SL — — SL —
CULVERT	— 15" CONC — C —	TRAFFIC SIGNAL	— SIG — — SIG —
IRRIGATION LINE	— 20" IRR — IRR —	FIRE ALARM	— F — — F —
GAS LINE	— 3" M — G —	ABANDONED UTILITY	— - - - -



EXISTING TOPOGRAPHY

	SANITARY SEWER MH		POWER POLE		RAILROAD TRACKS
	SANITARY SEWER CLEANOUT		GUY POLE		RAILROAD SIGN
	STORM DRAIN MH		POLE & GUY ANCHOR		RAILROAD SIGNAL
	IRRIGATION WEIR		PULL BOX		STREET LIGHT
	WATER MH		TRAFFIC SIGN		TRAFFIC SIGNAL
	GAS MH		PARKING METER		TRAFFIC SIGNAL ON MAST ARM
	ELECTRIC MH		FIRE ALARM BOX		TRAFFIC CONTROL BOX
	TELEPHONE MH OR VAULT		WATER METER		TRAFFIC SIGNAL DETECTOR
	FIRE HYDRANT		GAS METER		PEDESTRIAN CONTROL FOR TRAFFIC SIGNAL
	SPRINKLER HEAD		MAIL BOX		TREE SHOWING DIAMETER IN INCHES
	WATER VALVE		ELECTRICAL CONDUIT IN CROSS SECTION		PALM SHOWING DIAMETER IN INCHES
	GAS VALVE		BLOCK WALL		SHRUBBERY
	HYDRANT OR FAUCET		BOARD FENCE		TREE STUMP DIAMETER IN INCHES
	CONCRETE		WIRE FENCE		TOP OF SLOPE
	ASPHALT		CHAIN LINK FENCE		TOE OF SLOPE
	EDGE OF PAVEMENT				DIRECTION OF FLOW
	BUILDING				
	UNDERGROUND OR OVERHANGING STRUCTURE				

PROJECT LOCATION PLAN

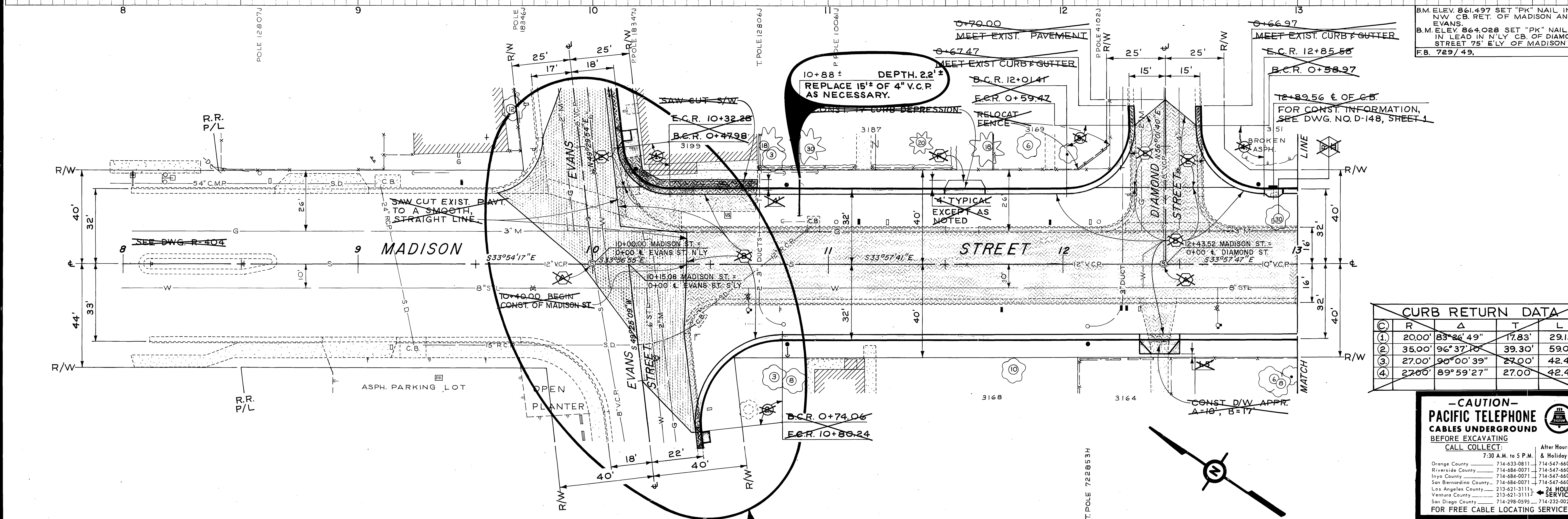
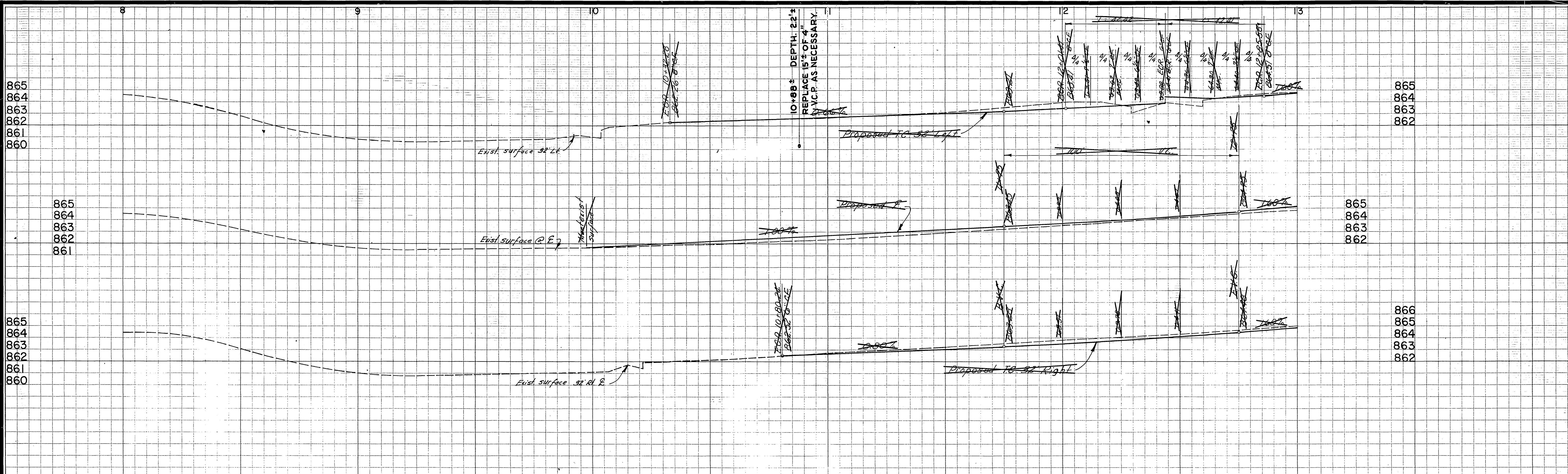


- CAUTION -
PACIFIC TELEPHONE
CABLES UNDERGROUND
BEFORE EXCAVATING

CALL COLLECT: 7:30 A.M. to 5 P.M. & Holidays
After Hours: 714-639-0811 / 714-547-6606

APPROVED BY	BY DATE	APPROVED BY	PROJECT NO. 5115
OFFICE ENGINEER			S - 698
PARK DEPARTMENT		DIRECTOR OF PUBLIC WORKS	
TRAFFIC DIVISION			
ASSISTANT CITY ENGINEER	DATE 8-28-67		SHEET 1 OF 5

DESIGNED BY: JPC DRAWN BY: JPC CHECKED BY: JPC S.S. NO.



B.M. ELEV. 861.497 SET "PK" NAIL IN NW CB. RET. OF MADISON AND EVANS
 B.M. ELEV. 864.028 SET "PK" NAIL IN LEAD IN N'LY CB. OF DIAMOND STREET 75' E'LY OF MADISON ST. F.B. 729/49.

12+89.56 ± OF C.B.
 FOR CONST. INFORMATION, SEE DWG. NO. D-148, SHEET 1

CURB RETURN DATA				
(C)	R	Δ	T	L
(1)	20.00'	83°26'49"	17.83'	29.13'
(2)	35.00'	96°37'10"	39.30'	59.02'
(3)	27.00'	90°00'39"	27.00'	42.42'
(4)	27.00'	89°59'27"	27.00'	42.41'

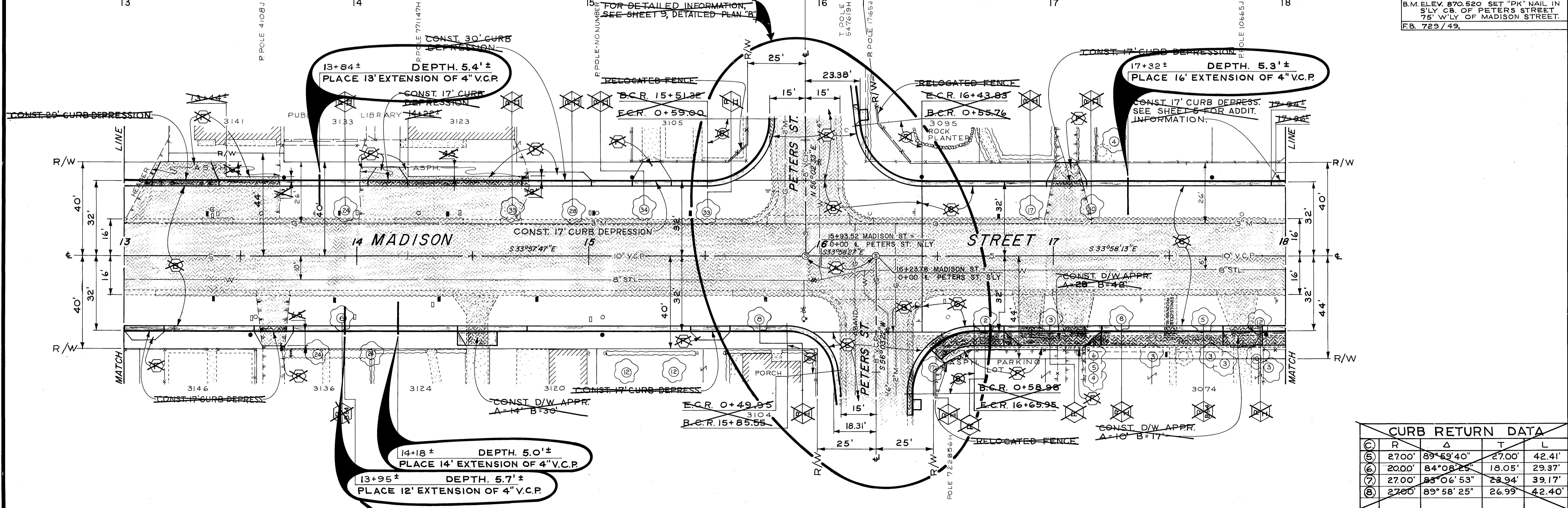
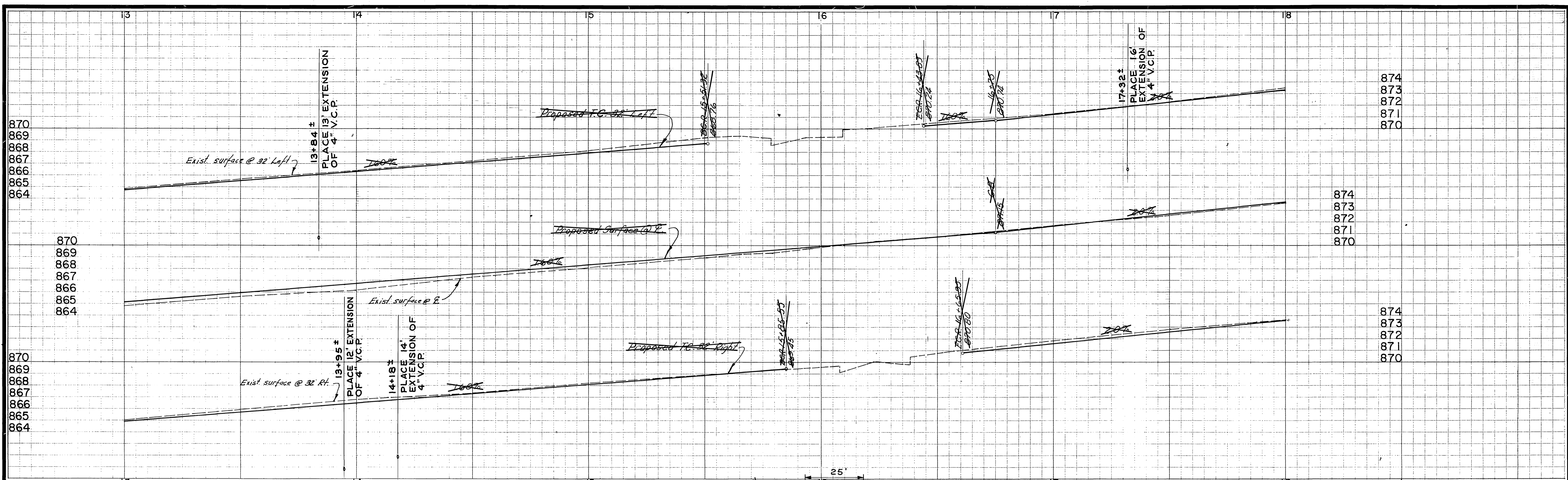
-CAUTION-
PACIFIC TELEPHONE
CABLES UNDERGROUND
 BEFORE EXCAVATING
 CALL COLLECT:

Orange County	714-633-0811	714-547-6606
Riverside County	714-684-0071	714-547-6606
Inyo County	714-684-0071	714-547-6606
San Bernardino County	714-684-0071	714-547-6606
Los Angeles County	213-621-3111	24 HOUR SERVICE
Ventura County	714-621-3111	24 HOUR SERVICE
San Diego County	714-298-0595	714-232-0027

FOR FREE CABLE LOCATING SERVICE

FOR DETAILED INFORMATION, SEE SHEET 9, DETAILED PLAN "A"

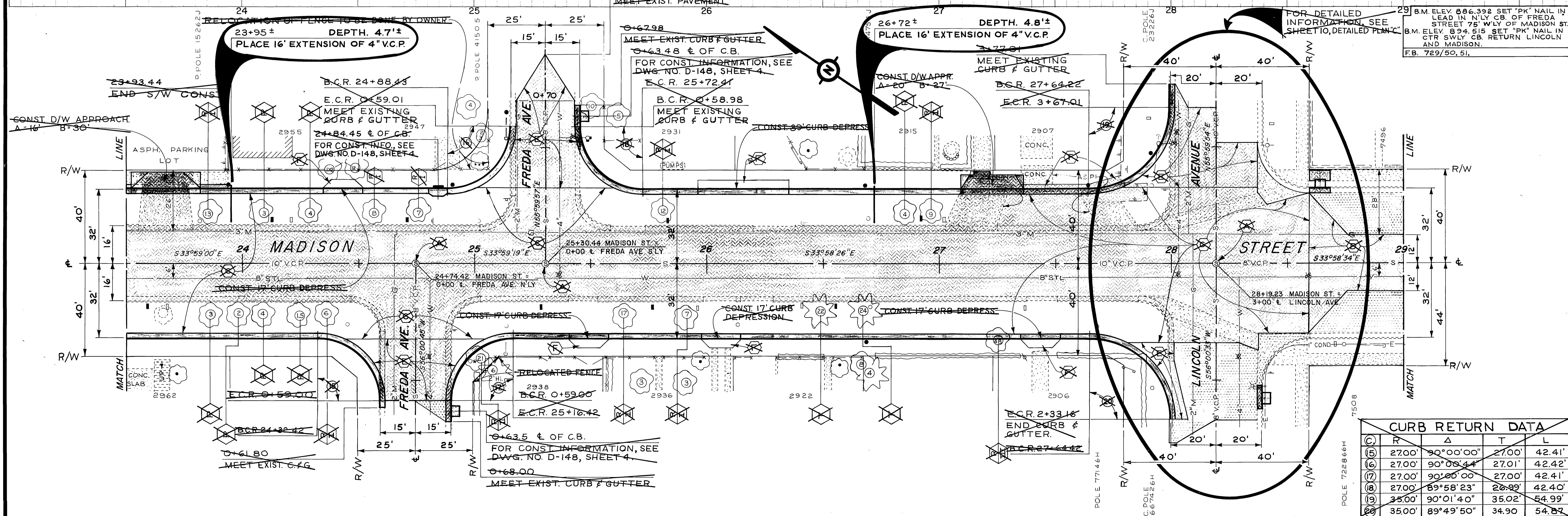
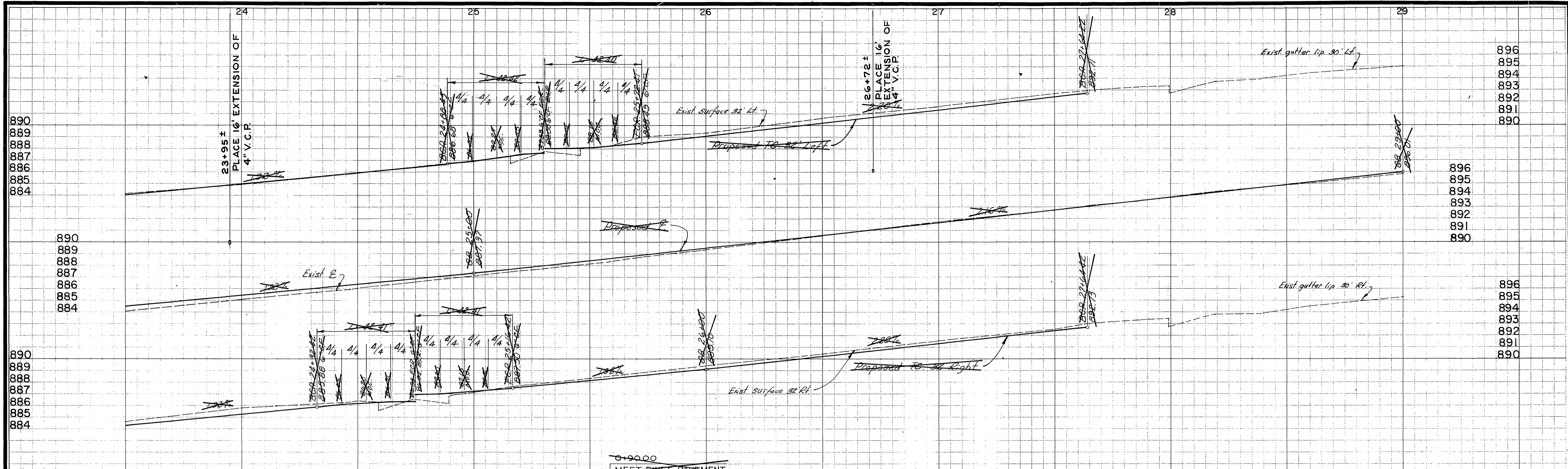
CITY OF RIVERSIDE, CALIFORNIA DEPARTMENT OF PUBLIC WORKS		MADISON STREET SEWER Lateral Extensions, Evans to Lincoln & Sewer Extension - Sta. 33+24 to Sta. 35+11.20		PROJECT NO. 5116 S-698
APPROVED BY OFFICE ENGINEER PARK DEPARTMENT TRAFFIC DIVISION ASSISTANT CITY ENGINEER	BY DATE <i>[Signature]</i> 1/28	APPROVED BY <i>[Signature]</i> DIRECTOR OF PUBLIC WORKS	DATE 5-28-67	SHEET 2 OF 5 HORIZ. SCALE: 1" = 20' VERT. SCALE: 1" = 4' S.S. PROJECT NO.
DESIGNED BY <i>[Signature]</i> DRAWN BY J.P.G. CHECKED BY D.C.H.	REVISIONS APPR. DATE	T. POLE 722653H T. POLE 690106H	T. POLE 12807J T. POLE 18346J T. POLE 18347U T. POLE 12806J T. POLE 10061J T. POLE 4108J	R.R. P/L ASPH. PARKING LOT OPEN PLANTER DIAMOND STREET EVANS STREET



B.M. ELEV. 870.520 SET "PK" NAIL IN SLY. CB. OF PETERS STREET 75' W/LY OF MADISON STREET. F.B. 729/49.

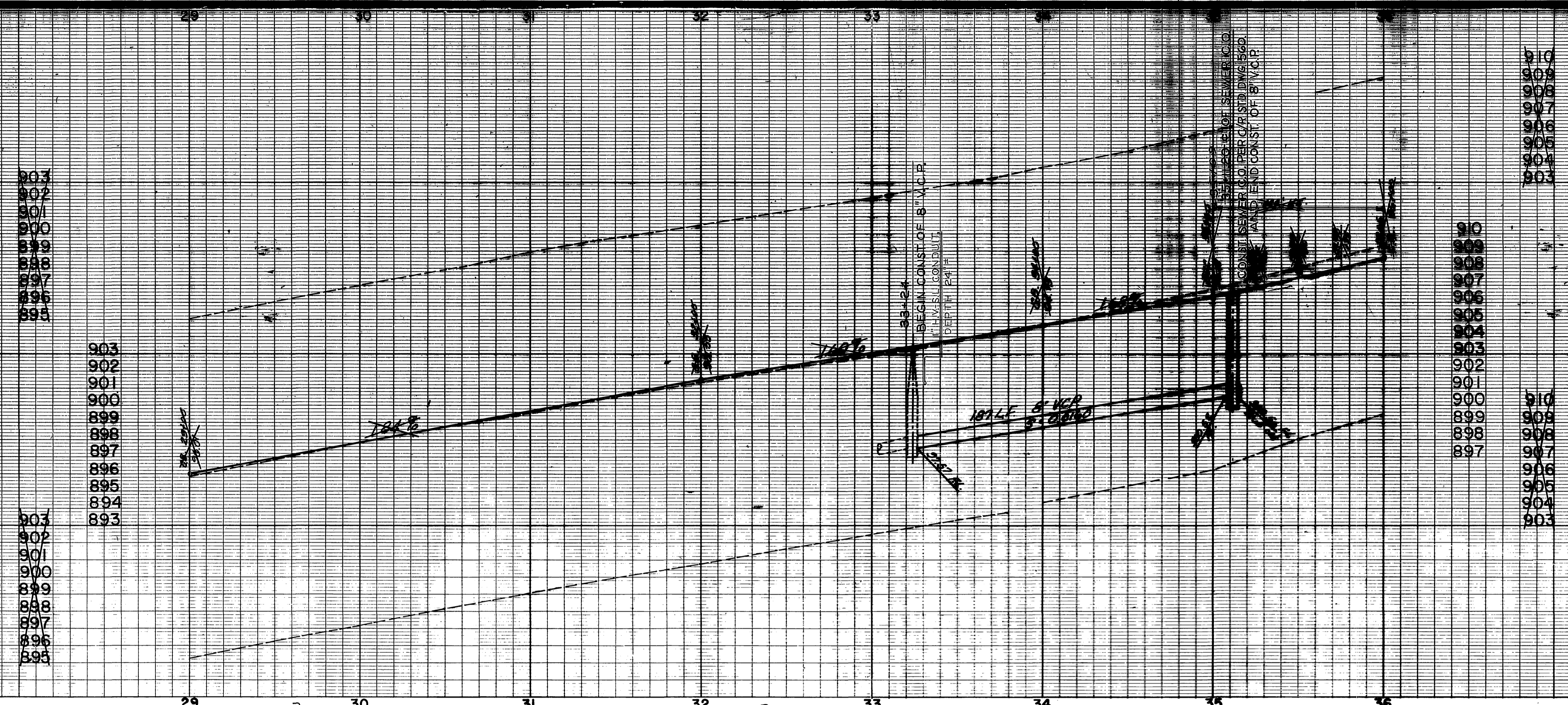
CURB RETURN DATA				
①	R	Δ	T	L
⑤	2700'	89°59'40"	27.00'	42.41'
⑥	2000'	84°08'25"	18.05'	29.37'
⑦	2700'	83°06'53"	23.94'	39.17'
⑧	2700'	89°58'25"	26.99'	42.40'

CITY OF RIVERSIDE, CALIFORNIA DEPARTMENT OF PUBLIC WORKS		MADISON STREET SEWER Lateral Extensions, Evans to Lincoln & Sewer Extension - Sta. 33+24 to Sta. 35+11.20		PROJECT NO. 5115 S-698
APPROVED BY: [Signature] OFFICE ENGINEER PARK DEPARTMENT TRAFFIC DIVISION ASSISTANT CITY ENG.	BY: [Signature] DATE: 7/28	APPROVED BY: [Signature] DIRECTOR OF PUBLIC WORKS	SHEET 3 OF 5 S.S. PROJECT NO.	
DESIGNED BY: [Signature] DRAWN BY: JPG CHECKED BY: JCA		DATE: 9-23-67		HORIZ. SCALE: 1" = 20' VERT. SCALE: 1" = 4'

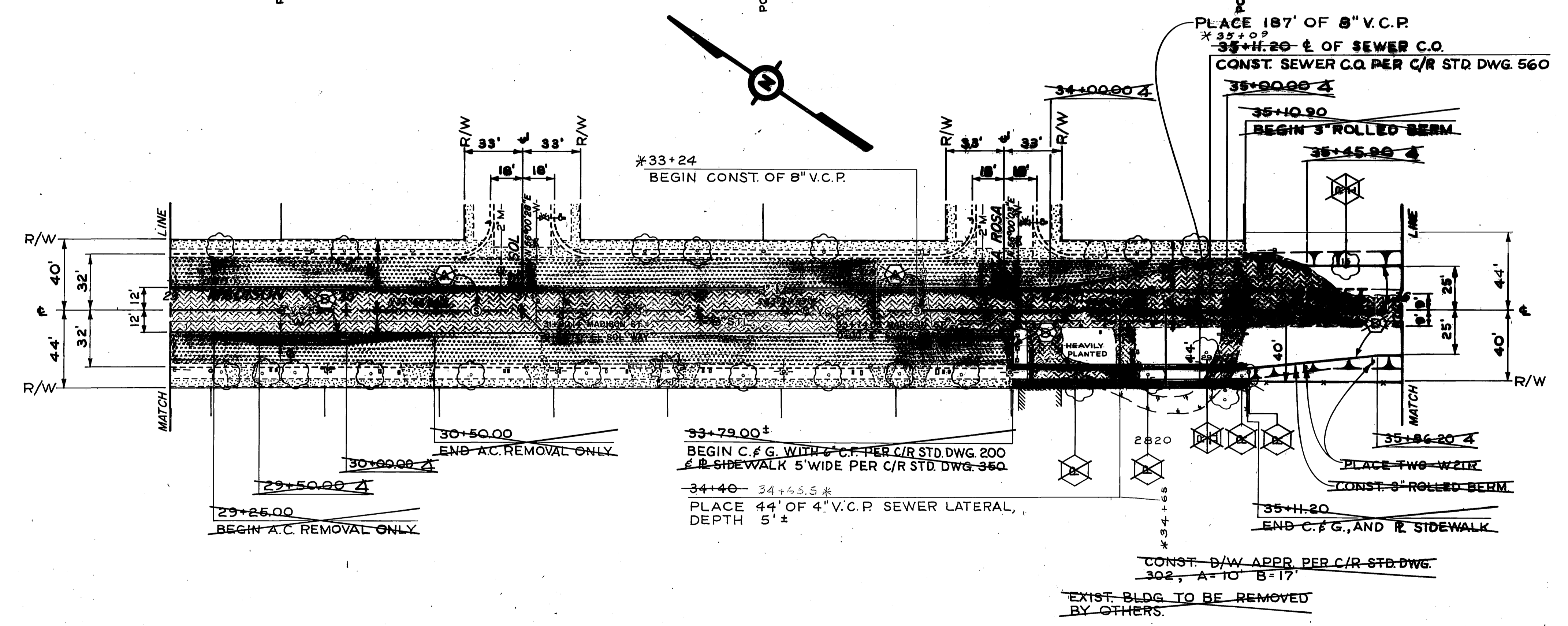


CURB RETURN DATA				
(C)	R	Δ	T	L
(5)	27.00'	90°00'00"	27.00'	42.41'
(6)	27.00'	90°06'44"	27.01'	42.42'
(7)	27.00'	90°00'00"	27.00'	42.41'
(8)	27.00'	89°58'23"	26.99'	42.40'
(9)	35.00'	90°01'40"	35.02'	54.99'
(20)	35.00'	89°49'50"	34.90'	54.87'

CITY OF RIVERSIDE, CALIFORNIA DEPARTMENT OF PUBLIC WORKS		MADISON STREET SEWER Lateral Extensions, Evans to Lincoln & Sta. 23+50 to Sta. 29+00		PROJECT NO. 5115 S-698
APPROVED BY <i>[Signature]</i> OFFICE ENGINEER	BY <i>[Signature]</i> PARK DEPARTMENT	DATE 8-29-67	APPROVED BY <i>[Signature]</i> DIRECTOR OF PUBLIC WORKS	SHEET 4 OF 5
DESIGNED BY D.S.	DRAWN BY J.P.G.	CHECKED BY D.C.H.	DATE 8-29-67	HORIZ. SCALE: 1" = 20' VERT. SCALE: 1" = 4' S.S. PROJECT NO.



B.M. ELEV. 894.515 SET "PK" NAIL IN CTR. SWLY CB. RETURN LINCOLN & MADISON.
 B.M. ELEV. 325.48 CHIS. X ON F.H. BOLT AT VICTORIA.
 F.B. 729/51, 701/82



POLE 62H2H

*AS BUILT 9-27-67 KFB

MARK	REVISIONS	APPR.	DATE
DESIGNED BY: <i>SS</i>	DRAWN BY: <i>JPG</i>	CHECKED BY: <i>POH</i>	

CITY OF RIVERSIDE, CALIFORNIA		DEPARTMENT OF PUBLIC WORKS	
APPROVED BY:	DATE:	APPROVED BY:	DATE:
OFFICE ENGINEER	7/27	<i>[Signature]</i>	8-25-67
PARK DEPARTMENT		DIRECTOR OF PUBLIC WORKS	
TRAFFIC DIVISION			
ASSISTANT CITY ENG.	208		

MADISON STREET SEWER
 Lateral Extensions, Evans to Lincoln &
 Sewer Extension - Sta. 33+24 to Sta. 35+11.2
 Plan & Profile of Sewer Extension
 Sta. 33+24 to Sta. 35+11.20

PROJECT NO. S115
S-698
 SHEET 5 OF 5
 S.S. PROJECT NO.

HORIZ. SCALE: 1" = 40'
 VERT. SCALE: 1" = 4'