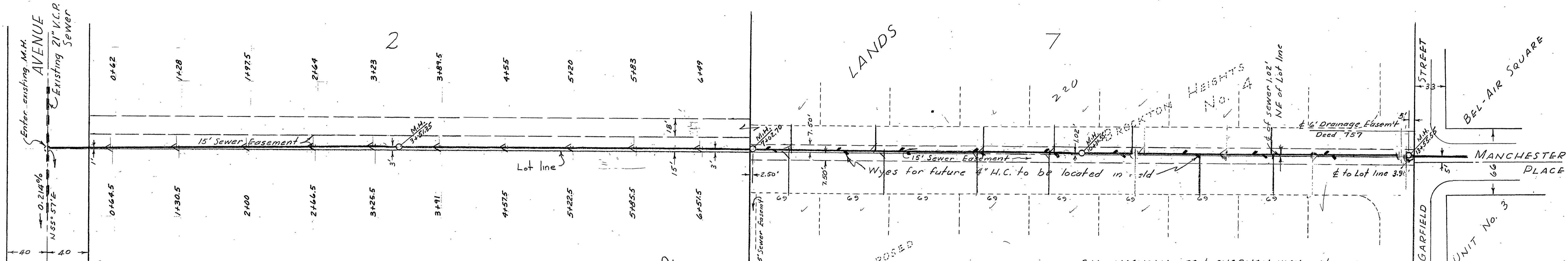
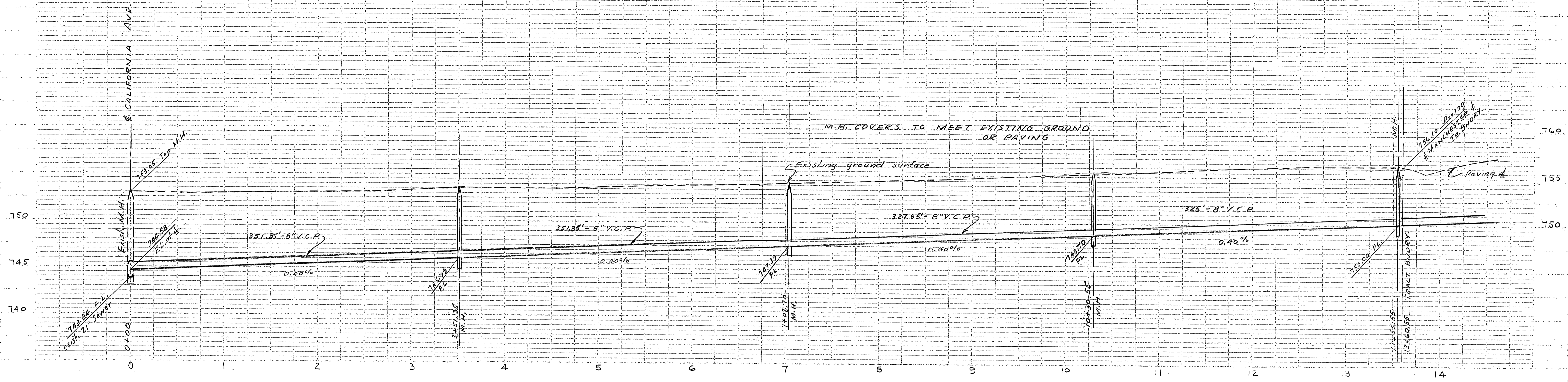


PROPERTY OF
CITY OF RIVERSIDE
DEPT. OF PUBLIC WORKS
ENGINEERING DIVISION

PROPERTY OF
CITY OF RIVERSIDE
DEPT. OF PUBLIC WORKS
ENGINEERING DIVISION

PROFILE
Vertical Scale - 1" = 5'



B.M. MAGNOLIA OPP. & SHERMAN WAY - N&L ON C.B. SO. SIDE OF ST. 772.29
B.M. CALIFORNIA '650' E. OF JACKSON - SP. IN P.P. # 6513J 751.63
B.M. STEEL GATE & WIER, N^o SIDE MAGNOLIA 773.34

SEWER LENGTHS SHOWN BETWEEN & OF M.H.s
ESTIMATE OF QUANTITIES

8" V.C.P.	2407 lin. ft.
4" HOUSE CONNECTIONS	620 lin. ft.
WYES	50
MANHOLES	7
CLEANOUT	1

PREPARED BY ALBERT A. WEBB ASSOCIATES, CIVIL ENGINEERS
APPROVED BY *Albert A. Webb* DATE *Jan 16, 56*
CITY OF RIVERSIDE, CALIFORNIA
DEPARTMENT OF PUBLIC WORKS
SEWER PLAN & PROFILE
OF
MANCHESTER PLACE
IN
BEL-AIR SQUARE UNIT NO. 3

APPROVED BY *J. M. ...*
DIRECTOR OF PUBLIC WORKS
DATE 1-17-56
NO. S-7
SHEET 1 OF 2

PROPERTY OF
CITY OF RIVERSIDE
DEPT. OF PUBLIC WORKS
ENGINEERING DIVISION

PROPERTY OF
CITY OF RIVERSIDE
DEPT. OF PUBLIC WORKS
ENGINEERING DIVISION

F.B. 289
W.O. 54-319

Reimb. Contr. # 18

