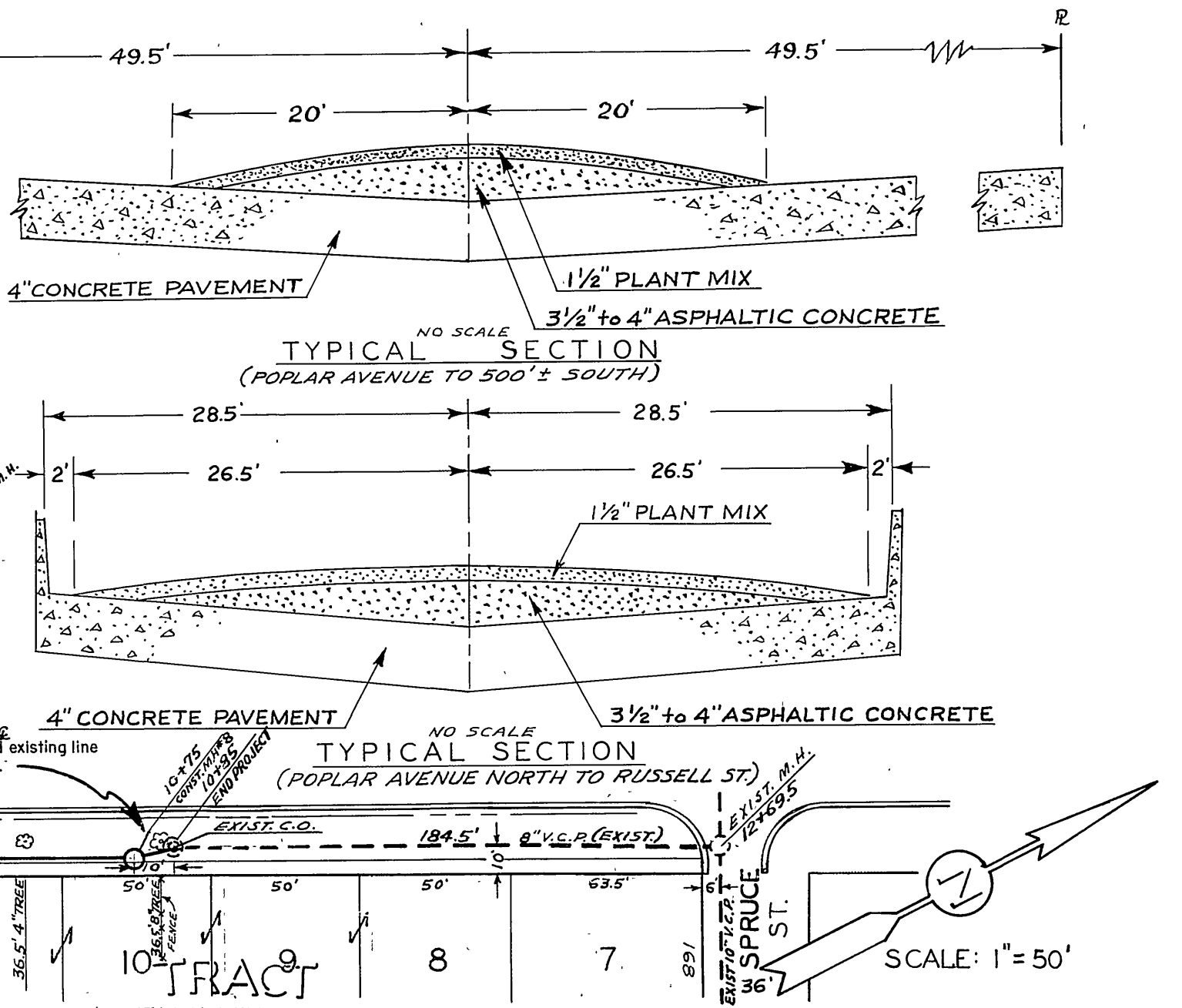
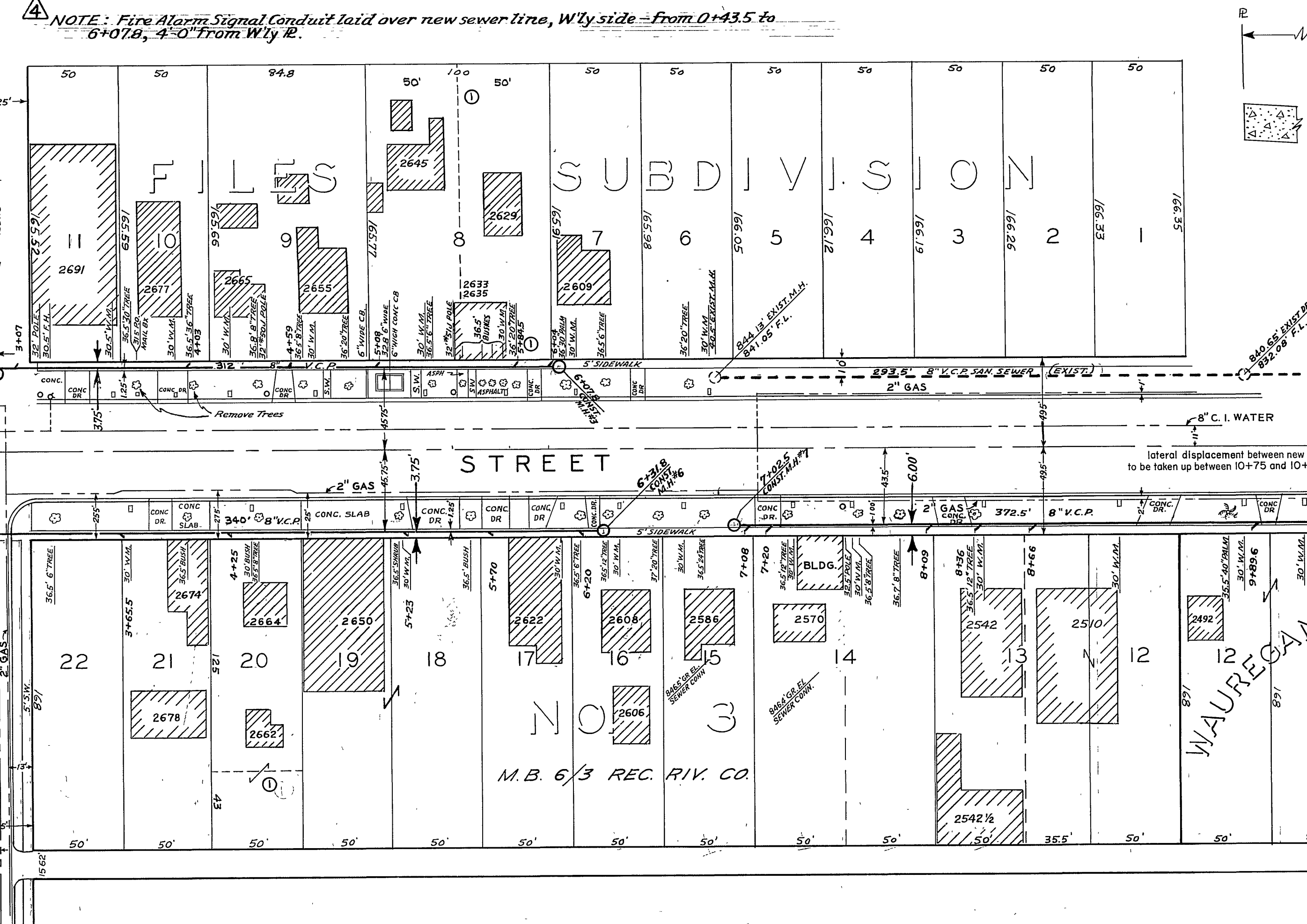
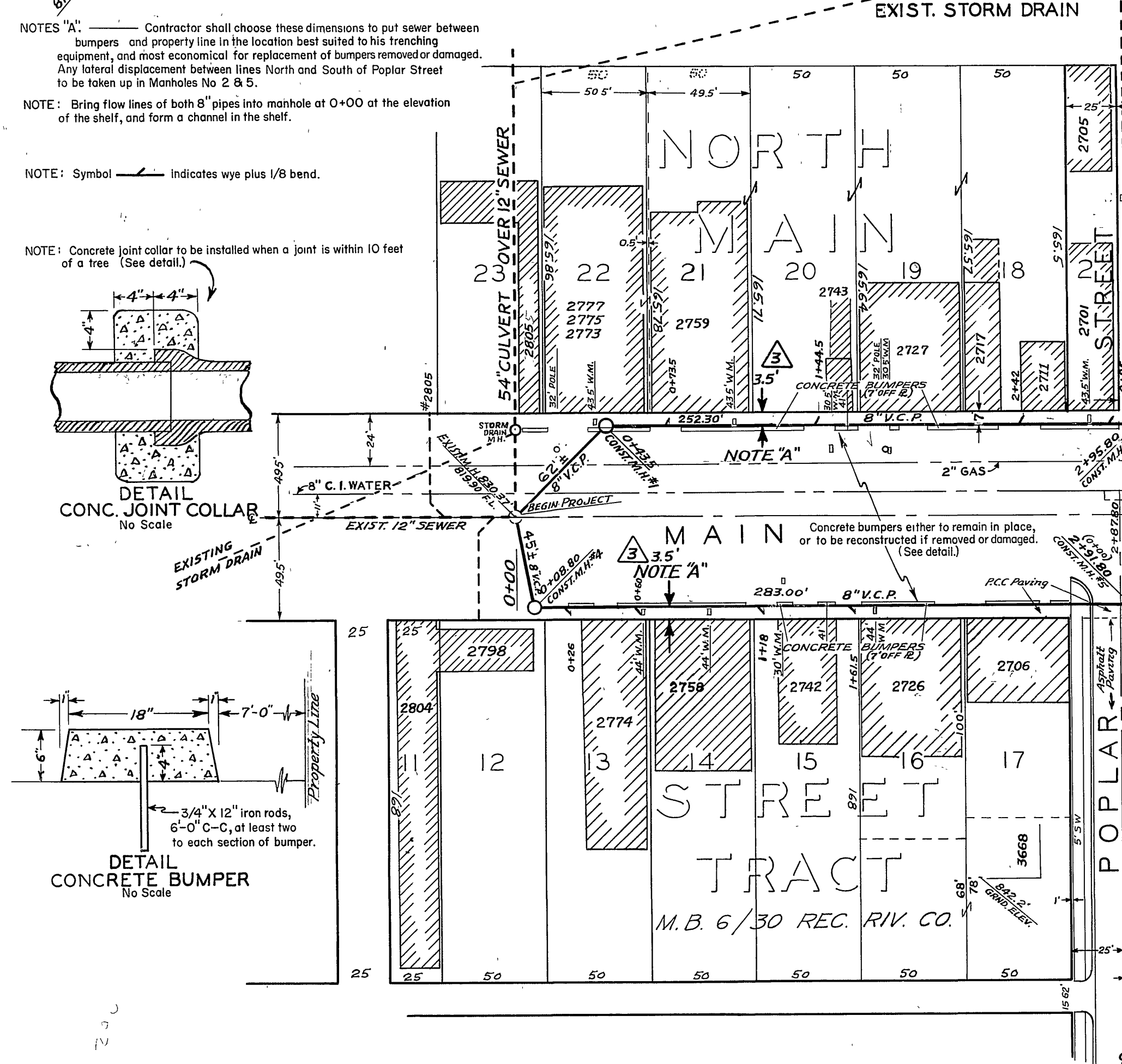


B.M. ELEV. 839.92 S&L IN E. CB. MAIN ST. 15' NO. OF N.P.L. POPLAR ST.
 B.M. ELEV. 830.93 V.S. 830.92 S&L IN W. CB. OF MAIN ST. OPP. L. RUSSELL ST.
 B.M. ELEV. 852.87 S&L IN SO. CB. POPLAR ST. 40'± W. OF C. ORANGE ST. (SEE B.M. BOOK)
 F.B. 596/41
 SCALES: HOR. 1" = 50', VERT. 1" = 5'
 REFERENCE DWGS. 1145 1039 972 & 740-A

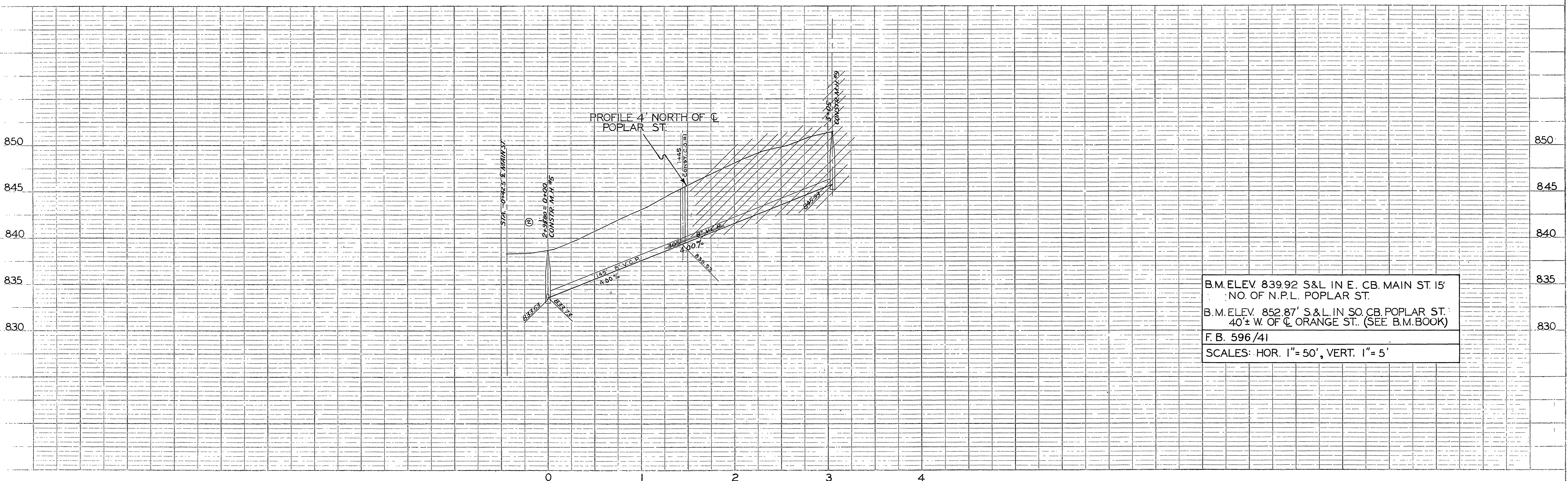
PROFILE	DATE	BY
PLANNED		
DESIGNED		
CHECKED		
APPROVED		



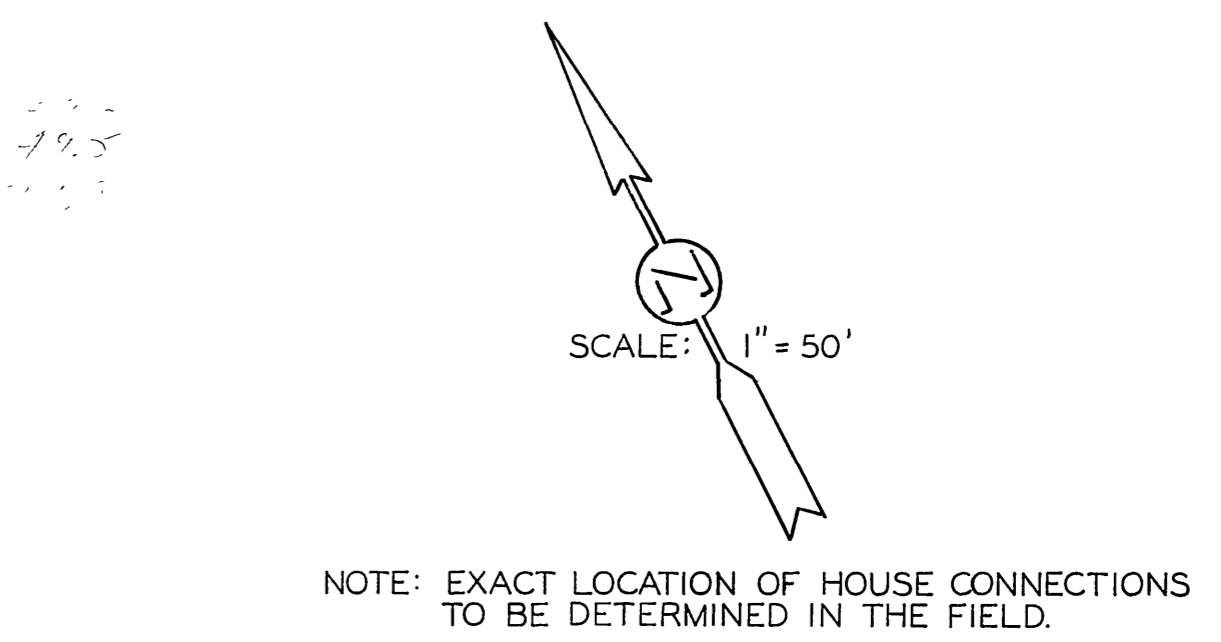
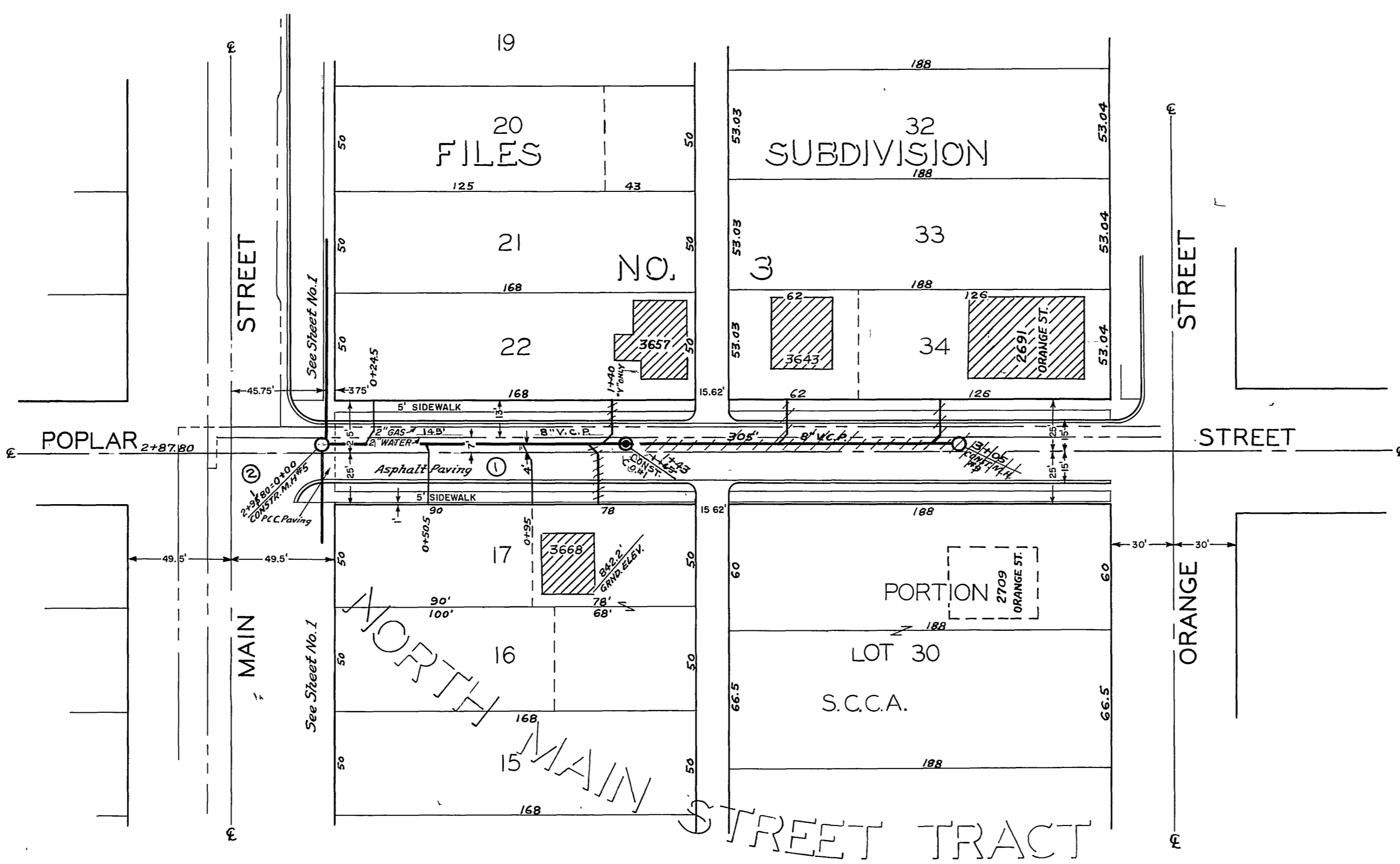
MARK	DATE	DESCRIPTION
①	6-27-57	After receipt of prelim. spreads
②	12-27-57	M.H. #1 F.L. wdg
③	3-14-58	As Built, Y' locations n.b.w.
④	3-17-58	Fire Alarm Signal Conduit.

CITY OF RIVERSIDE CALIFORNIA
 DEPARTMENT OF PUBLIC WORKS
 MAIN STREET
 SANITARY
 SEWER DISTRICT

APPROVED BY: *[Signature]*
 CHECKED BY: H.H.
 DIRECTOR OF PUBLIC WORKS
 DATE: June 14, 1957
 S-70
 SHEET 1 OF 2



PROFILE	DATE



PLAN	DATE

REVISIONS		CITY OF RIVERSIDE, CALIFORNIA DEPARTMENT OF PUBLIC WORKS	
DATE	DESCRIPTION	BY	DATE
9-12-57	SHORTENED MAIN LINE	wdg	
12-26-57	STATIONING	wdg	
3-14-58	AS BUILT WYE AND HOUSE CONNECTIONS	nsb	

DESIGNED BY W.S.	CHECKED BY H.H.	APPROVED BY <i>Demetrius</i> DIRECTOR OF PUBLIC WORKS	
		DATE June 14, 1957	SHEET 2 OF 2