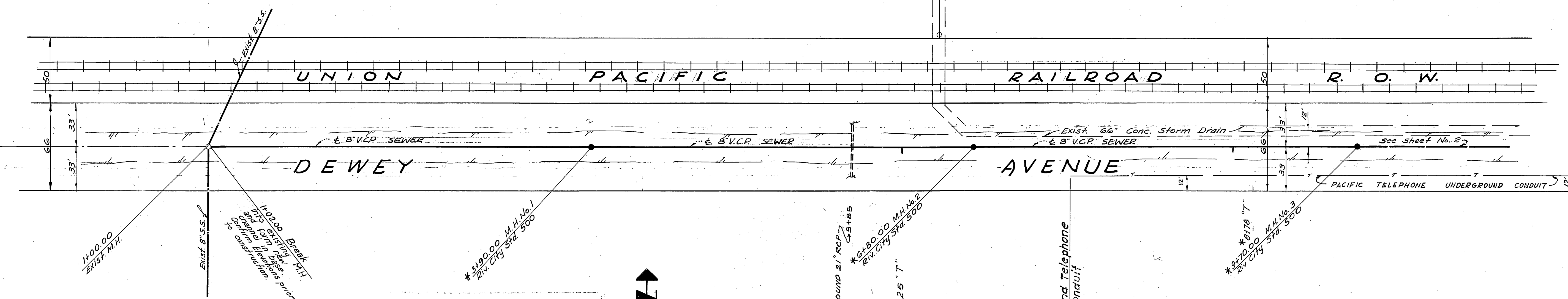


GENERAL NOTES

1. Construction shall be in accordance with the City of Riverside, Dept. of Public Works, standard specification N^o 461 and standard drawings.
2. It shall be the responsibility of the contractor to clear the right of way in accordance with the provisions of the law as it affects each utility including irrigation lines and appurtenance and at no cost to the City of Riverside.
3. Joints shall be in conformance to ASTM Specifications C-425-C4 Type I or III or to A.S.T.M. Specifications C-594-GGT (Band Steel) with certain exceptions or modifications on file with the City Engineer.
4. Pipe shall be bedded per Case I, standard drawing no. 452, unless otherwise specified on plan.
5. Location of Tees and laterals will be determined in the field by the owner.
6. All Tees to be constructed in accordance with Standard Drawing No. 562. Stubs shall be plugged and capped.
7. Precast manholes may be used after obtaining prior approval of the City Engineer.
8. Stubs at Manholes shall be 2' long, and plugged.



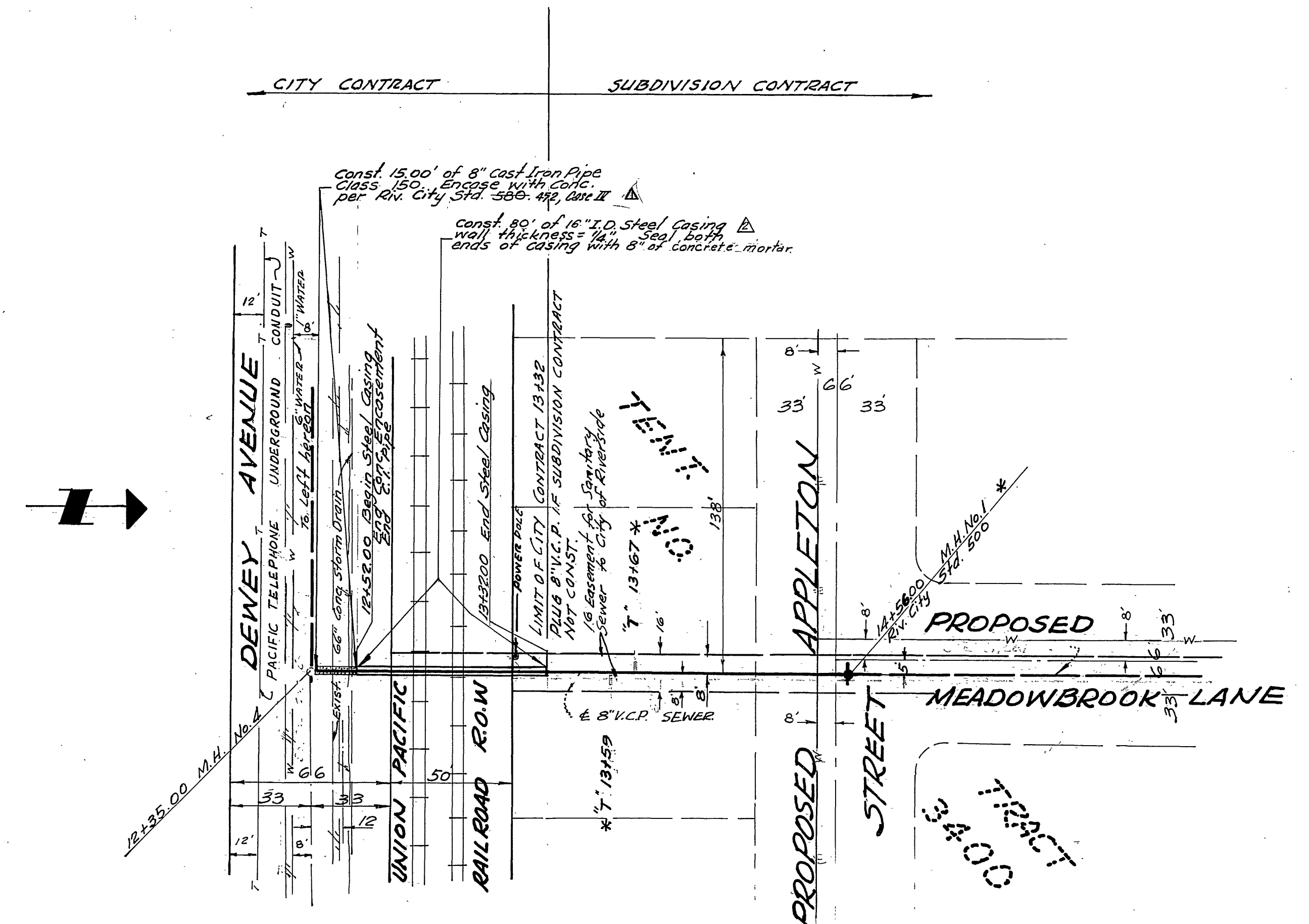
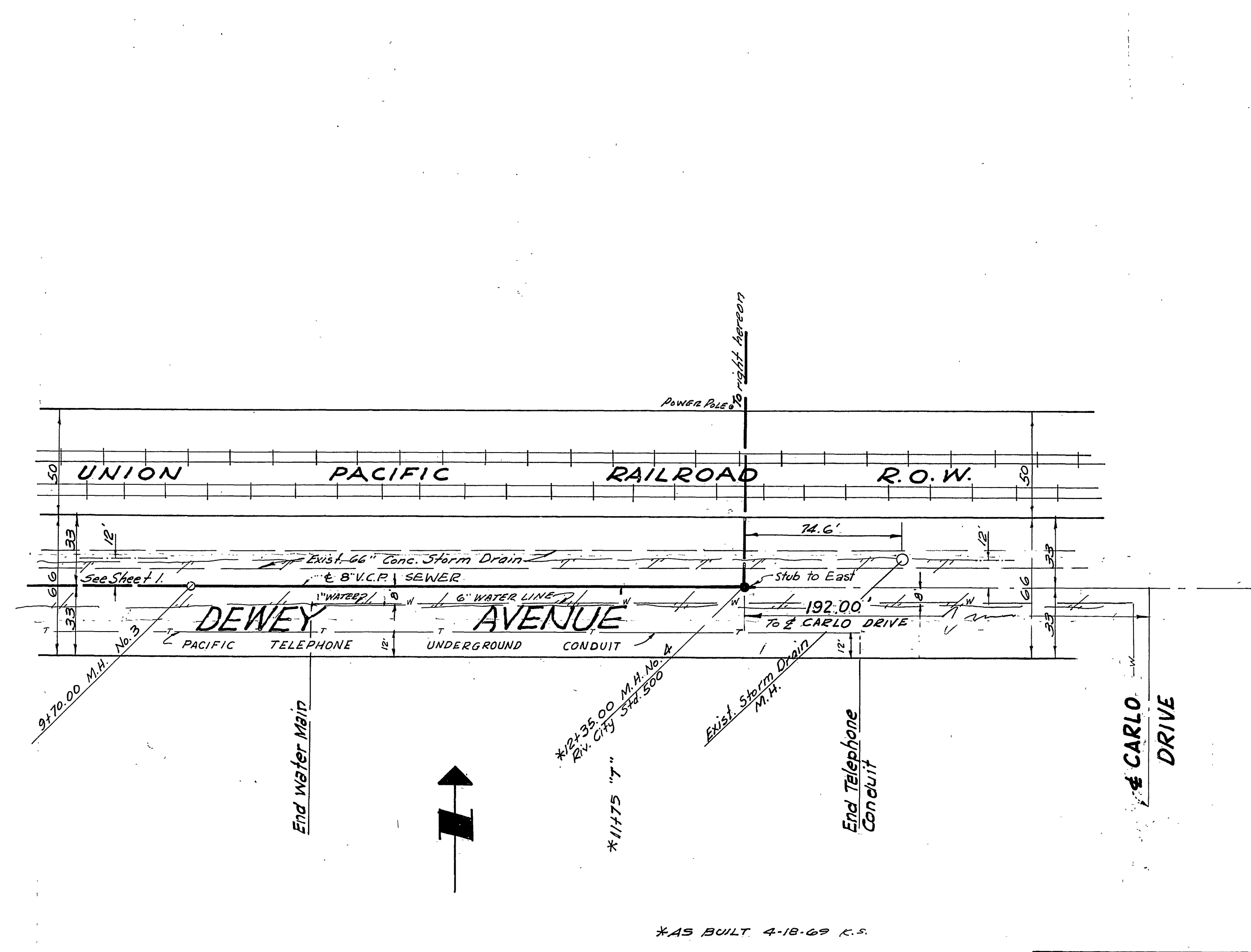
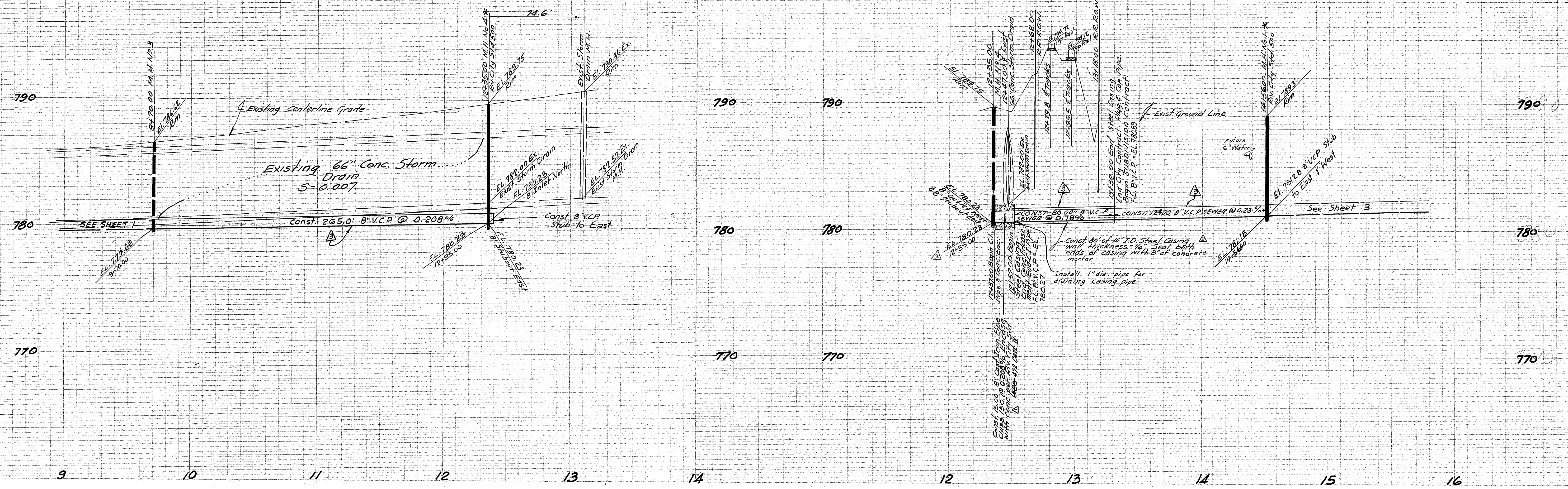
-CAUTION-
PACIFIC TELEPHONE
CABLES UNDERGROUND
BEFORE EXCAVATING
CALL COLLECT:

Orange County	714-633-0811	714-547-6606
Riverside County	714-684-0071	714-547-6606
Inyo County	714-684-0071	714-547-6606
San Bernardino County	714-684-0071	714-547-6606
Los Angeles County	213-621-3111	24 HOUR SERVICE
Ventura County	213-621-3111	24 HOUR SERVICE
San Diego County	714-298-0595	714-232-0027

FOR FREE CABLE LOCATING SERVICE

APPROVED BY:
Howard L. Crean 11-18-68
 CHIEF UTILITIES ENGINEER-WATER

BENCH MARK: ELEV. 814.146 P.K. nail in lead in center of N.W. curb return Palm Avenue and Jurupa Avenue. F.B. 720-36		TECHNOLOGICAL ENGINEER ORP <i>R. J. ...</i> RE. 7830 APR. 15, 1968
CITY OF RIVERSIDE, CALIFORNIA DEPARTMENT OF PUBLIC WORKS		TRACT NO. 3760 SEWER EXTENSION DEWEY AVENUE FROM: STEARNS STREET TO: 870' EASTERLY THEREOF
APPROVED: <i>[Signature]</i> DATE: 11/18/68 OFFICE ENGINEER	DESIGNED BY: <i>[Signature]</i> DRAWN BY: <i>[Signature]</i> CHECKED BY: <i>[Signature]</i>	INDEXED: <i>[Signature]</i> PROJECT: 110 SHEET 1 OF 2 FILE NO.



APPROVED BY:
Howard K. Cream 11-13-68
 CHIEF UTILITIES ENGINEER - WATER

MARK	REVISIONS	APPR.	DATE
△	CONNECTED STA. DWG. NO. FOR COMPLETE INSTALLATION		11-13-68
△	REVISED STEEL CASING SIZE FROM 18 TO 16 INCHES		11-13-68
△	REVISED GRADES & ELEVATIONS TO FIT AS BUILT JACKED CASING (SEE ENGINEERING, W.R.)		11-13-68

BENCH MARK: ELEV 814.146
 P.K. nail in lead in center of N.W. curb return Palm Avenue and Jurupa Avenue. F.B. 720-36

TECHNOLOGICAL ENGINEERING CORP
 7830 APR. 15, 1968

CITY OF RIVERSIDE, CALIFORNIA
 DEPARTMENT OF PUBLIC WORKS

TRACT NO. 3760
 SEWER EXTENSION
 DEWEY AVENUE
 FROM: 870' EASTERLY OF STEARNS STREET TO: 1135' EASTERLY OF STEARNS STREET
 EASEMENT
 FROM: DEWEY AVENUE TO: PROPOSED APPLETON STREET

PROJECT NO. S-700
 SHEET 2 OF 2
 FILE NO.

HORIZ. SCALE: 1" = 40' VERT. SCALE: 1" = 4'