

\*AS BUILT 5-9-69 K.S.

APPROVED BY:  
*Howard L. Cream* 11-13-68  
 CHIEF UTILITIES ENGINEER-WATER

BENCH MARK EL. 814.146  
 P.K. nail in lead in center of  
 N.W. curb return Palm Avenue and  
 Jurupa Avenue  
 R.S. 720-36

TECHNOLOGICAL ENGINEERING CORP.  
*P.R. Warwick*  
 P.R. WARWICK R.C.E. 7830  
 APRIL 15, 1968  
 DATE

CITY OF RIVERSIDE, CALIFORNIA  
 DEPARTMENT OF PUBLIC WORKS

APPROVED BY	BY	DATE
<i>[Signature]</i>	<i>[Signature]</i>	7/16/68
OFFICE ENGINEER		
PARK DEPARTMENT		
TRAFFIC DIVISION		
ASSISTANT CITY ENG.		

DESIGNED BY: \_\_\_\_\_ DRAWN BY: \_\_\_\_\_ CHECKED BY: *[Signature]*

TRACT NO. 3760  
 SEWER EXTENSION  
 EASEMENT  
 TO  
 MEADOWBROOK LANE

HORIZ. SCALE: 1" = 40'  
 VERT. SCALE: 1" = 4'

INDEXED M.I.  
 PROJECT NO.  
 S-701  
 SHEET 1 OF 2  
 FILE NO.



800

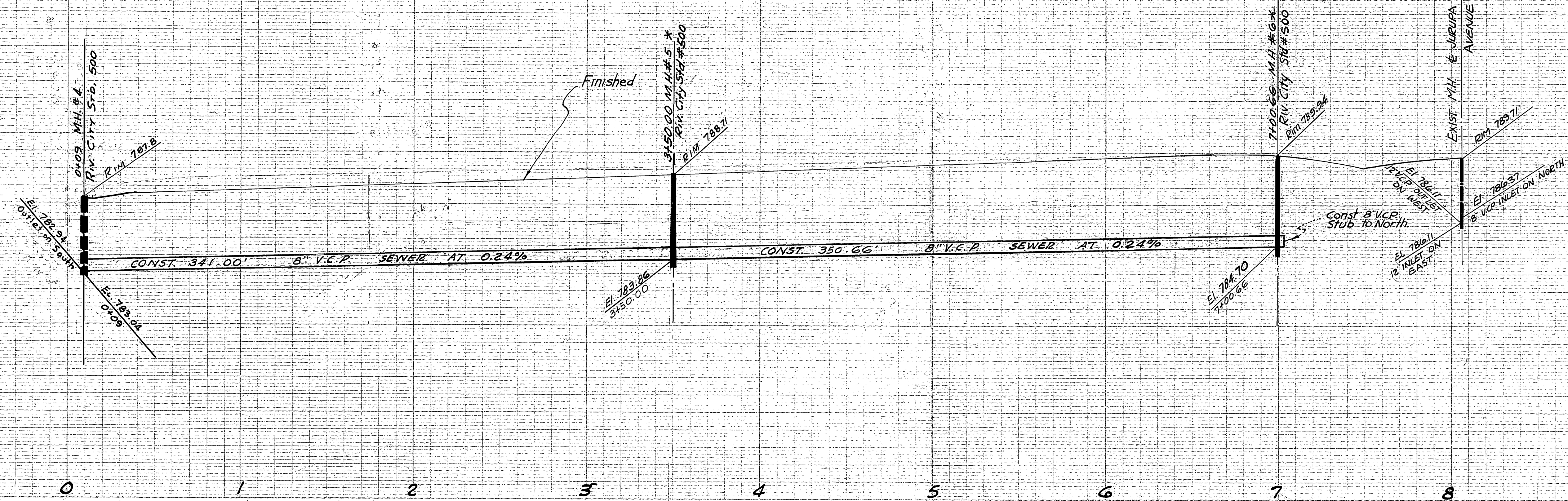
800

790

790

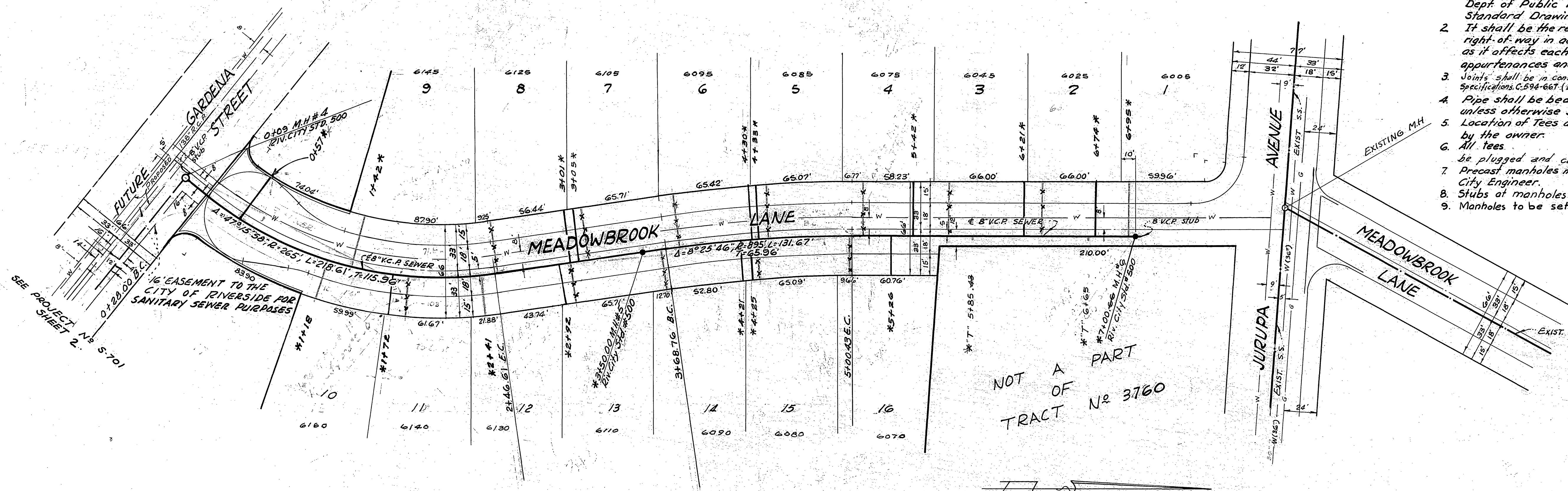
780

780



### GENERAL NOTES

1. Construction shall be in accordance with the City of Riverside Dept. of Public Works Standard Specification No. 461 and Standard Drawings.
2. It shall be the responsibility of the contractor to clear the right-of-way in accordance with the provisions of the law as it affects each utility including irrigation lines and appurtenances and at no cost to the City of Riverside.
3. Joints shall be in conformance to A.S.T.M. Specifications C-425 - 44 Type I or III or to A.S.T.M. Specifications C-594-667 (Bead Seal) with certain exceptions or modifications on file with the City Engineer.
4. Pipe shall be bedded per Case I, Standard Drawing No. 452, unless otherwise specified on plan.
5. Location of Tees and laterals will be determined in the field by the owner.
6. All Tees to be laid horizontal and all stubs shall be plugged and capped.
7. Precast manholes may be used after obtaining prior approval of the City Engineer.
8. Stubs of manholes shall be two feet long.
9. Manholes to be set to finished pavement grade on Meadowbrook Lane.



SEE PROJECT SHEET 2.  
 16' EASEMENT TO THE CITY OF RIVERSIDE FOR SANITARY SEWER PURPOSES  
 0+228.00 B.C.  
 3390

\*A3 BUILT 5-3-69 C.C.

BENCH MARK EL. 814.146 P.K. nail in lead in center of N.W. Curb return Palm Avenue and Jurupa Avenue. Station 720+36		TECHNOLOGICAL ENGINEERING CORP. R.R. WARWICK R.C.E. 7880 DATE: APRIL 15, 1968	
CITY OF RIVERSIDE, CALIFORNIA DEPARTMENT OF PUBLIC WORKS		SEWER IMPROVEMENTS TRACT No 3760 MEADOWBROOK LANE	
APPROVED BY: Howard L. Crean 11-13-68 CHIEF UTILITIES ENGINEER - WATER		PROJECT NO. S-701 SHEET 2 OF 2	
APPROVED BY: [Signature] OFFICE ENGINEER DATE: 11/15/68		FROM: GARDENA STREET TO: JURUPA AVENUE	
DESIGNED BY: [Signature] DRAWN BY: [Signature] CHECKED BY: [Signature]		HORIZ. SCALE: 1" = 40' VERT. SCALE: 1" = 4'	