

FILLMORE STREET

GENERAL NOTES

- CONSTRUCTION SHALL BE IN ACCORDANCE WITH THE CITY OF RIVERSIDE, DEPARTMENT OF PUBLIC WORKS, STANDARD SPECIFICATIONS NO. 461 AND STANDARD DRAWINGS.
- IT SHALL BE THE RESPONSIBILITY OF THE CONTRACTOR TO CLEAR THE RIGHT OF WAY IN ACCORDANCE WITH THE PROVISIONS OF THE LAW AS IT AFFECTS EACH UTILITY INCLUDING IRRIGATION LINES AND APPURTENANCES AND AT NO COST TO THE CITY. LOCATION OF TEES AND LATERALS TO BE DETERMINED AT THE DIRECTION OF THE OWNER.
- PIPE SHALL BE BEDDED PER CASE I, STANDARD DRAWING NO. 452, UNLESS OTHERWISE SPECIFIED ON PLAN.
- ALL STUBS AND LATERALS TO BE CONSTRUCTED IN ACCORDANCE WITH STANDARD DRAWING NO. 562. STUBS SHALL BE PLUGGED AND CAPPED AND SHALL BE 2' LONG.
- MANHOLE FRAMES AND COVERS TO BE SET TO PROPOSED PAVEMENT GRADES.
- LATERALS ARE TO BE 4" AND EXTENDED TO PROPERTY LINE.
- PRIOR TO CONSTRUCTION OF SEWER, CONTRACTOR IS TO EXPOSE EXISTING SEWER AND CONTACT ENGINEER FOR VERIFICATION OF EXISTING ELEVATIONS.
- JOINTS IN VITRIFIED CLAY PIPE SEWERS SHALL BE IN CONFORMANCE TO A.S.T.M. SPECIFICATIONS C-425-64 TYPE I OR III OR TO A.S.T.M. SPECIFICATIONS C-594-66T (BAND SEAL) WITH CERTAIN EXCEPTIONS OR MODIFICATIONS ON FILE WITH THE CITY ENGINEER.

QUANTITY ESTIMATE

BREAK INTO EX. M.H., FORM NEW CHAN.	1 EA.
ADJUST QTY. TO FIN. GRADE	7 EA.
4" V.C.P.	924 L.F.
8" V.C.P.	1660 L.F.
SADDLES	3 EA.
MANHOLES (STD. 500)	7 EA.
CLEANOUT	1 EA.

NOTICE TO CONTRACTOR
 THE EXISTENCE AND LOCATION OF ANY UNDERGROUND UTILITY PIPES OR STRUCTURES SHOWN ON THESE PLANS ARE OBTAINED BY A SEARCH OF THE AVAILABLE RECORDS. TO THE BEST OF OUR KNOWLEDGE, THERE ARE NO EXISTING UTILITIES EXCEPT AS SHOWN ON THESE PLANS.

THE CONTRACTOR IS REQUIRED TO TAKE DUE PRECAUTIONARY MEASURES TO PROTECT THE UTILITY LINES SHOWN AND ANY OTHER LINES NOT OF RECORD OR NOT SHOWN ON THESE PLANS.

BENCH MARK: FB. 706/46
 R.R. SPIKE IN POLE 005489L-H ON S.E. COR. FILLMORE & INDIANA.
 ELEV. 740.179

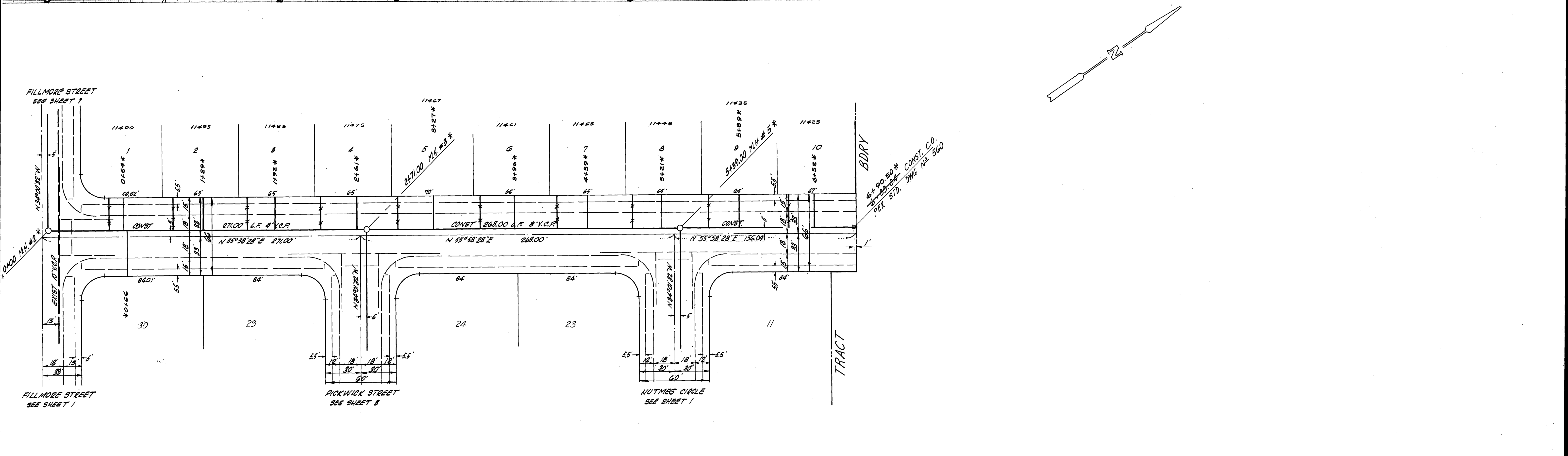
PLANS PREPARED UNDER SUPERVISION OF:
 JAMES E. WHITELAW, P.E.
 DATE: 6/14/65
 IN THE OFFICES OF
 VOORHEIS-TRINDLE-NELSON
 13794 BEACH BLVD
 WESTMINSTER, CALIFORNIA

NUTMEG CIRCLE

* AS BUILT 10-21-68 P.S. 30

CITY OF RIVERSIDE, CALIFORNIA DEPARTMENT OF PUBLIC WORKS		SEWER PLAN & PROFILE FILLMORE STREET NUTMEG CIRCLE TRACT NO. 3669		PROJECT NO. S-702
APPROVED BY OFFICE ENGINEER PARK DEPARTMENT TRAFFIC DIVISION ASSISTANT CITY ENG.	BY DATE 7/16/64 7/16/64 7/16/64 7/16/64	APPROVED BY DIRECTOR OF PUBLIC WORKS	SHEET 1 OF 3	
DESIGNED BY JL	DRAWN BY JL	CHECKED BY JL	FILE NO.	

HORIZ. SCALE: 1" = 40'
 VERT. SCALE: 1" = 4'

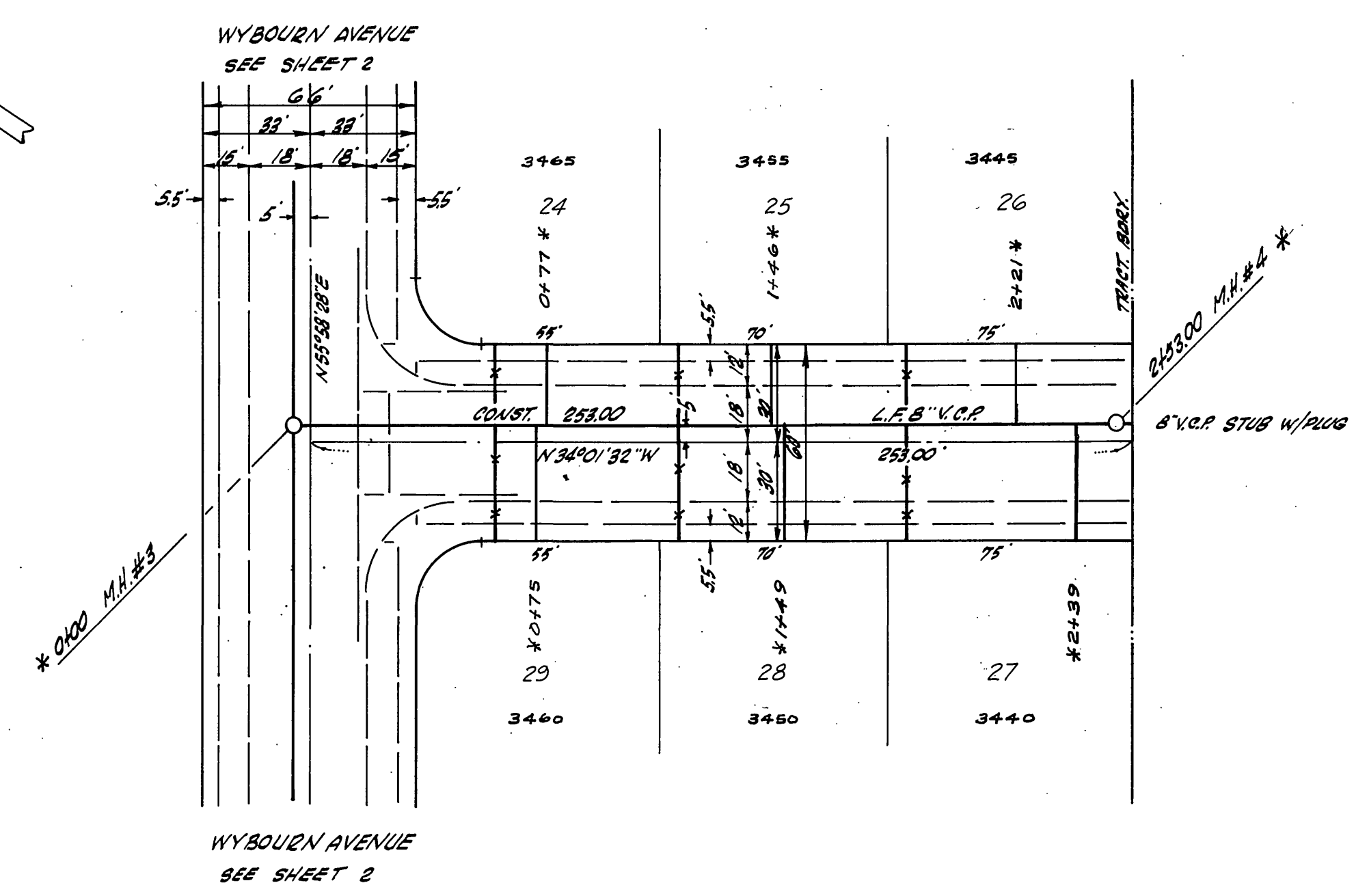
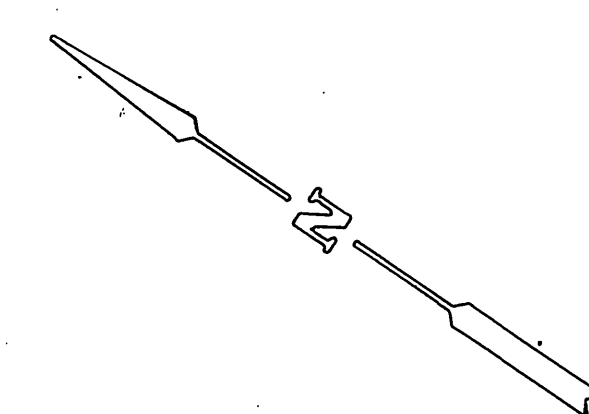


WYBOURN

AVENUE

*AS BUILT 10-21-68 K.F. 66

PLANS PREPARED UNDER SUPERVISION OF: <i>James E. Whitelan</i> DATE: 7/17/67 JAMES E. WHITELAN R.C.E. 14385 IN THE OFFICES OF VOORHEIS-TRINDLE-NELSON 13794 BEACH BLVD. WESTMINSTER, CALIFORNIA		CITY OF RIVERSIDE, CALIFORNIA DEPARTMENT OF PUBLIC WORKS APPROVED BY: <i>[Signature]</i> DATE: 7/26/67 OFFICE ENGINEER PARK DEPARTMENT TRAFFIC DIVISION ASSISTANT CITY ENG.	APPROVED BY: <i>[Signature]</i> DIRECTOR OF PUBLIC WORKS DATE: 6-14-67	PROJECT NO. S-702 SHEET 2 OF 3 FILE NO.
DESIGNED BY: JL DRAWN BY: JL CHECKED BY: JL	REVISIONS APPR. DATE	HORIZ. SCALE: 1" = 40' VERT. SCALE: 1" = 4'		



PICKWICK STREET

* AS BUILT 10-21-68 K.S.736

PLANS PREPARED UNDER SUPERVISION OF: <i>James E. Whitelaw</i> DATE: 7/1/69 JAMES E. WHITELAW REG. 14385 IN THE OFFICES OF VOORHEIS-TRINDLE-NELSON 13794 BEACH BLVD WESTMINSTER, CALIFORNIA		CITY OF RIVERSIDE, CALIFORNIA DEPARTMENT OF PUBLIC WORKS		PROJECT NO. S-702
DESIGNED BY: JL DRAWN BY: JL CHECKED BY: JL		APPROVED BY: <i>James E. Whitelaw</i> DATE: 6-14-69 OFFICE ENGINEER PARK DEPARTMENT TRAFFIC DIVISION ASSISTANT CITY ENG.		SHEET 3 OF 3 FILE NO.
		SEWER PLAN & PROFILE PICKWICK STREET TRACT N# 3669		HORIZ. SCALE: 1" = 40' VERT. SCALE: 1" = 4'