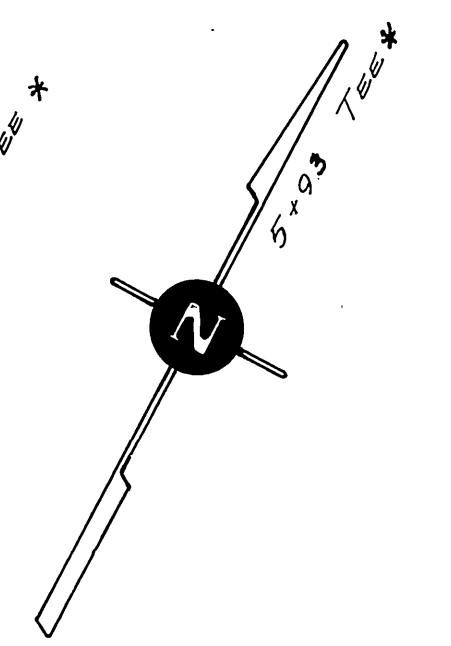


- GENERAL NOTES**
1. ALL MANHOLES SHALL BE CONSTRUCTED PER CITY OF RIVERSIDE STANDARD DRAWING No. 300, UNLESS OTHERWISE NOTED.
  2. SEWER LATERALS SHALL BE 4" V.C.P. CONSTRUCTED PER CITY OF RIVERSIDE STANDARD DRAWING No. 562.
  3. CHIMNEY PIPES SHALL BE CONSTRUCTED PER CITY OF RIVERSIDE STANDARD DRAWING No. 561.
  4. [S] INDICATES THAT LOCATION OF SEWER LATERAL HAS BEEN DETERMINED BY THE PROPERTY OWNER.
  5. ALL STUBS AT MANHOLES SHALL BE 2' LONG.
  6. [A] INDICATES LOCATION OF BORING TAKEN 12-5-67.

**QUANTITY ESTIMATE**

1.	10" VITRIFIED CLAY PIPE	350 L.F.
2.	8" VITRIFIED CLAY PIPE	3910 L.F.
3.	4" VITRIFIED CLAY PIPE	1935 L.F.
4.	10" V.C.P. TEES	3 EA.
5.	8" V.C.P. TEES	70 EA.
6.	CHIMNEY PIPE	86 V.F.
7.	SEWER MANHOLE	18 EA.
8.	DEEP MANHOLE	1 EA.
9.	SEWER CLEANOUT	1 EA.
10.	PAVEMENT REPLACEMENT OVER SEWER MAIN	4260 L.F.
11.	PAVEMENT REPLACEMENT OVER SEWER LATERALS	720 L.F.
12.	COARSER RUN ROCK BEDDING	1877 L.F.
13.	ROCK EXCAVATION	30 C.Y.



CITY OF RIVERSIDE, CALIFORNIA  
DEPARTMENT OF PUBLIC WORKS

STOVER-CAMPBELL  
ASSESSMENT DISTRICT

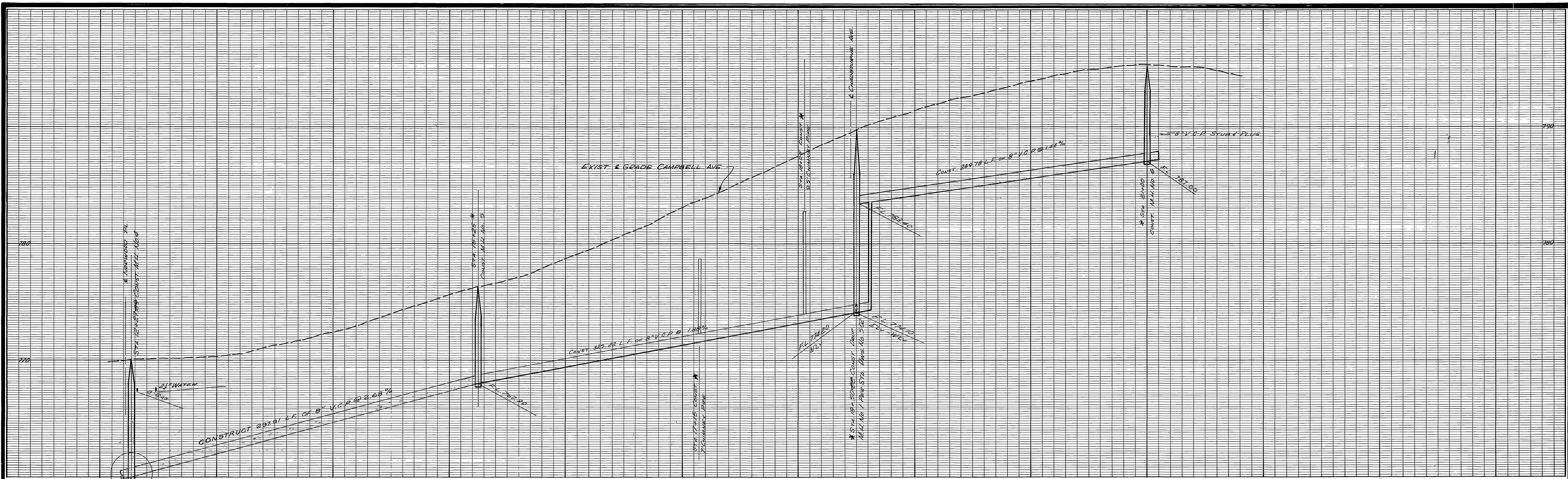
ACCOUNT No. 6074

APPROVED BY: [Signature]  
DATE: 5/29/68

CAMPBELL AVENUE

S-704

DESIGNED BY: [Signature] DRAWN BY: [Signature] CHECKED BY: [Signature]  
DATE: 5/29/68  
HORIZ. SCALE: 1" = 40' VERT. SCALE: 1" = 4'  
S.S. PROJECT NO.



12 13 14 15 16 17 18 19 20 21 22

SEE DETAIL ON SHEET ONE OF FIVE

14+84 INSTALL TEE ONLY \*

14+87 LATERAL \*

14+55 LATERAL \*

14+85 LATERAL \*

14+95 LATERAL \*

15+58 LATERAL \*

CHADBOURNE

SEE SHEET 4 OF 5

BLOCK 9

BLOCK 10



15+12 Lateral

15+90 TEE

14+68 TEE

15+51 TEE

16+41 Lateral

17+40 Lateral

17+85 Lateral

18+15 Lateral

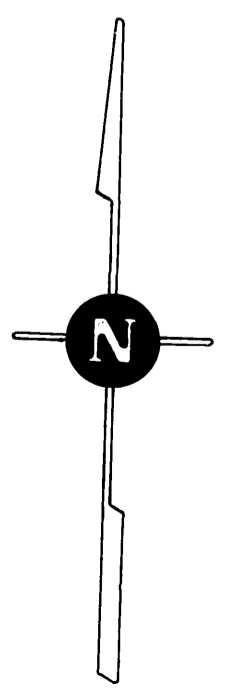
19+72 Lateral

20+65 Lateral

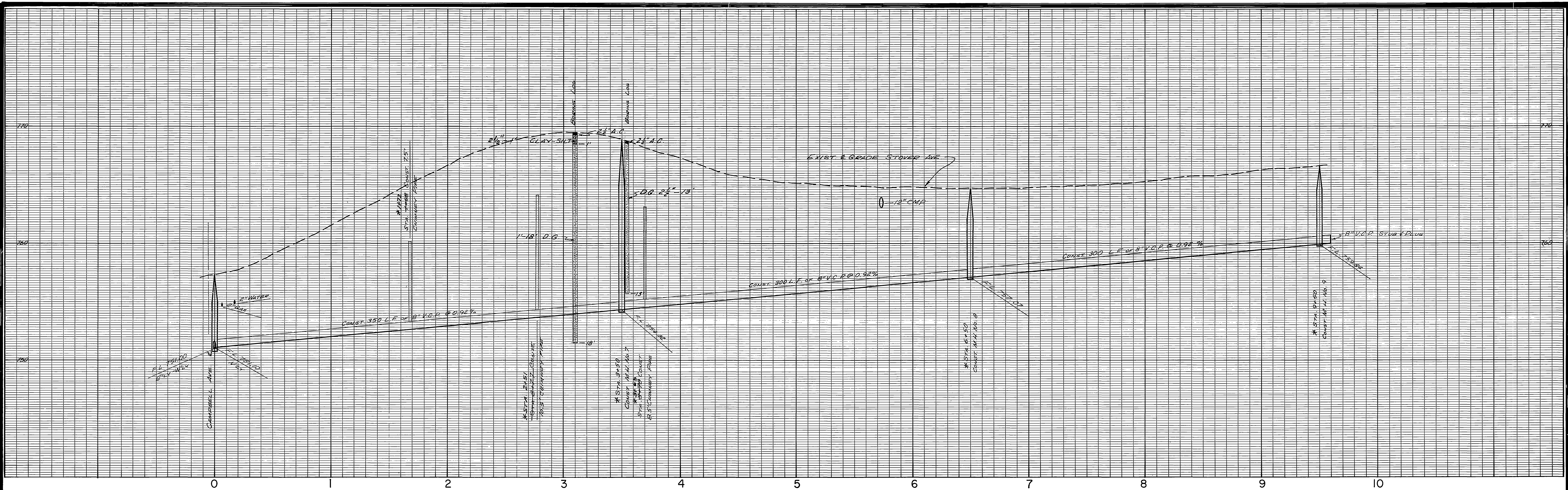
20+93 Lateral

BLOCK 11 HEIGHTS

\*45 BUILT 11-27-68 K.J. 10



CITY OF RIVERSIDE, CALIFORNIA DEPARTMENT OF PUBLIC WORKS		STOVER-CAMPBELL ASSESSMENT DISTRICT		ACCOUNT NO. 6074
APPROVED BY: SENIOR ENGINEER PARK DEPARTMENT TRAFFIC DIVISION ASSISTANT CITY ENG.		APPROVED BY: <i>[Signature]</i> DIRECTOR OF PUBLIC WORKS		S-704
DESIGNED BY: _____ DRAWN BY: <i>[Signature]</i> CHECKED BY: <i>[Signature]</i>		DATE: 5/23/68		SHEET 2 OF 5
MARK REVISIONS APPR. DATE		HORIZ. SCALE: 1" = 40' VERT. SCALE: 1" = 4'		S.S. PROJECT NO.



B.M. 752.71 R.D. SPIKE IN POLE No. 1071836E  
N.W. CORNER OF MITCHELL  
AND CAMPBELL.



CHADBOURNE  
BLOCK 7

BLOCK 8  
HEIGHTS

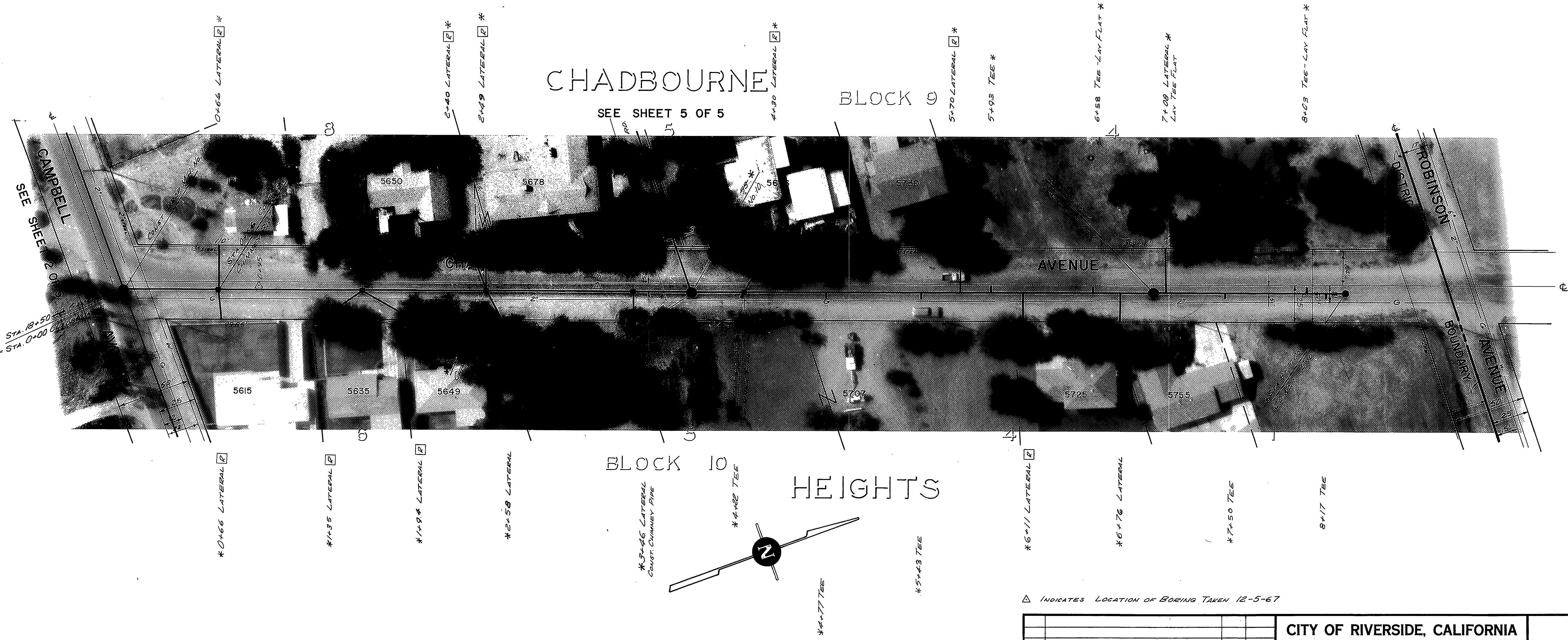
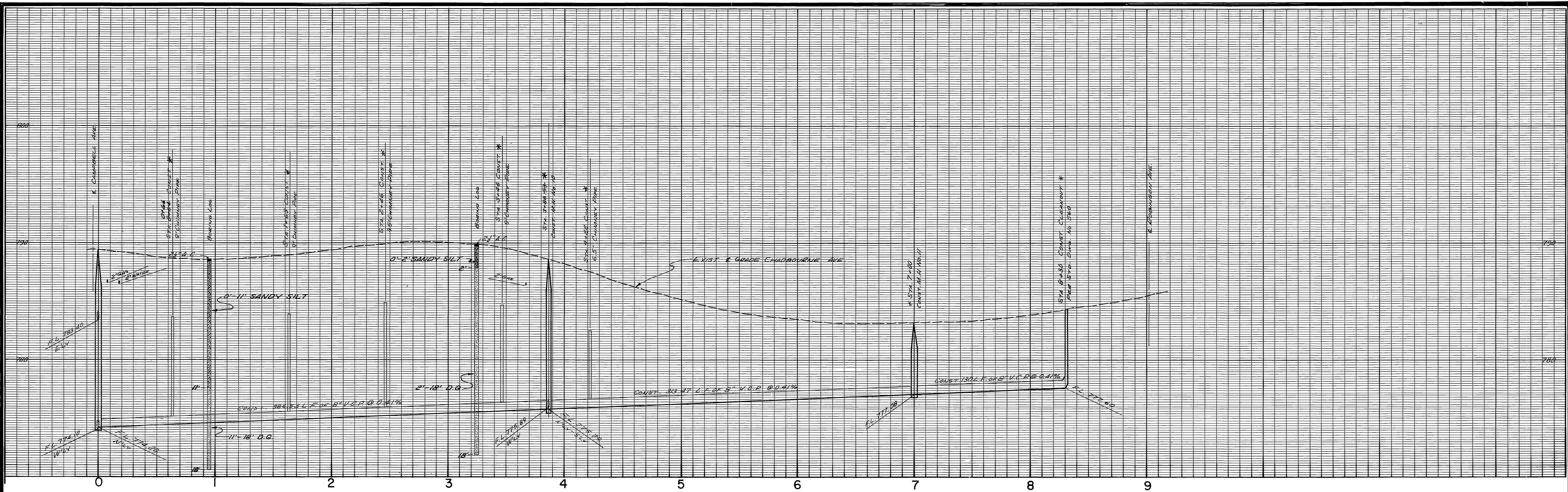
- 1417 TEE \*
- 1480 LATERAL \*
- 2449 TEE \*
- 3438 LATERAL \*
- LATERAL 4411 \*
- 4480 LATERAL \*
- 5457 LATERAL \*
- 6488 LATERAL \*
- 7488 TEE \*
- 8410 TEE \*
- 9432 LATERAL \*
- 4091 LATERAL \*
- 4109 TEE \*
- 4178 LATERAL \*
- 4251 LATERAL \*
- 4361 LATERAL \*
- 4380 LATERAL \*
- 4482 LATERAL \*
- 4549 LATERAL \*
- 4555 LATERAL \*
- 4770 LATERAL \*
- 48108 TEE \*
- 4848 TEE \*

\* AS BUILT 11-27-68 E.S.

\* INDICATES LOCATION OF BORING TAKEN 12-5-67

CITY OF RIVERSIDE, CALIFORNIA DEPARTMENT OF PUBLIC WORKS		STOVER-CAMPBELL ASSESSMENT DISTRICT.		ACCOUNT NO. 6074
APPROVED BY SENIOR ENGINEER PARK DEPARTMENT TRAFFIC DIVISION ASSISTANT CITY ENG.	BY DATE 2/26/68	APPROVED BY DIRECTOR OF PUBLIC WORKS	S-704	
STOVER AVENUE			SHEET 3 OF 5	
HORIZ. SCALE: 1" = 40' VERT. SCALE: 1" = 4'			S.S. PROJECT NO.	

755  
769  
706  
13



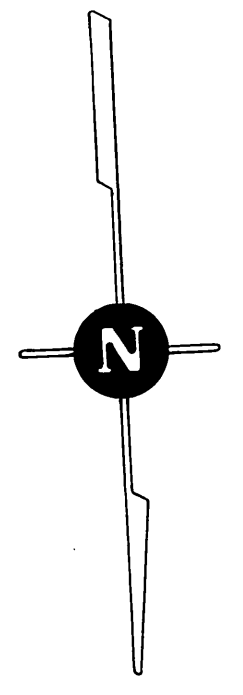
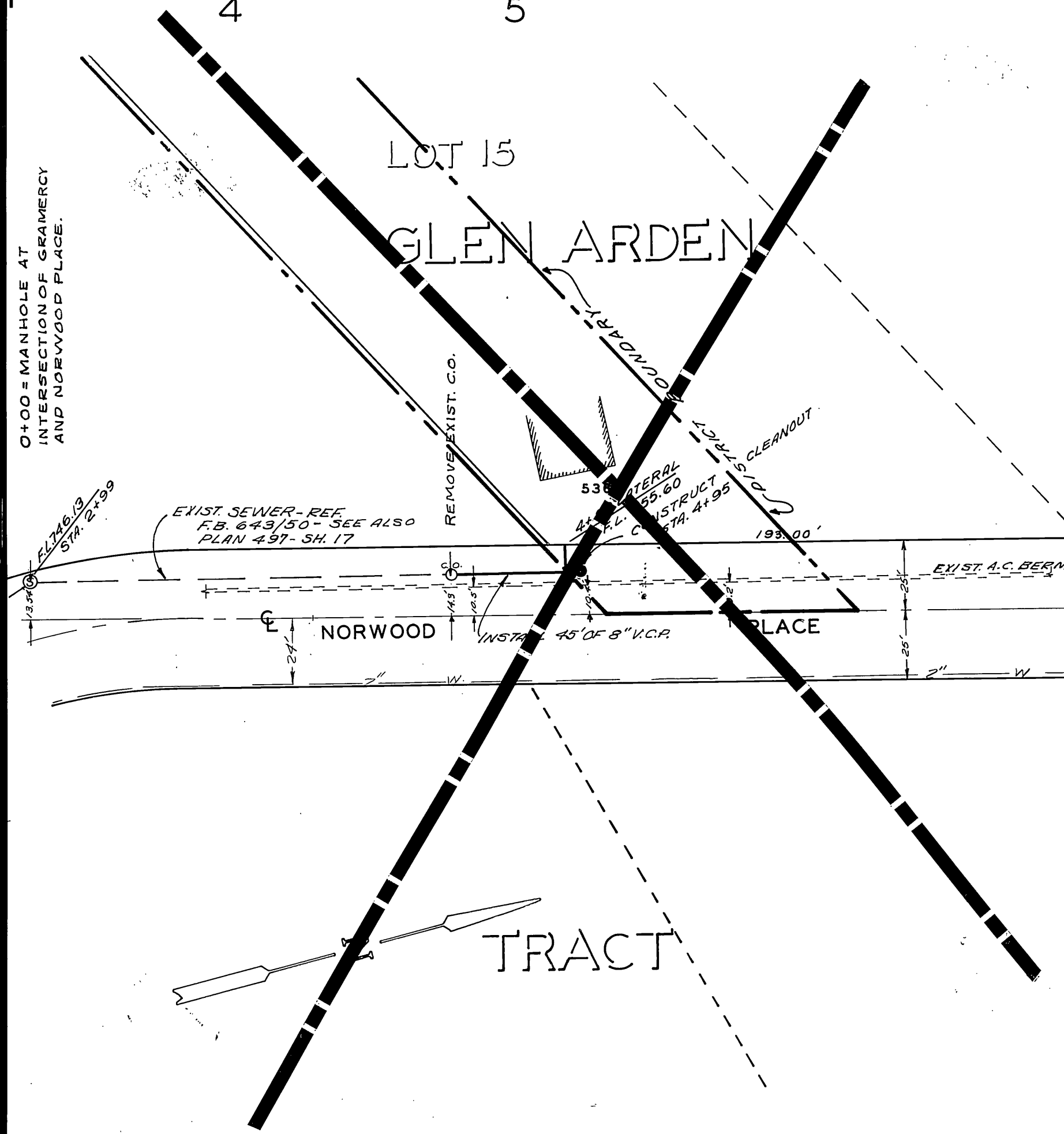
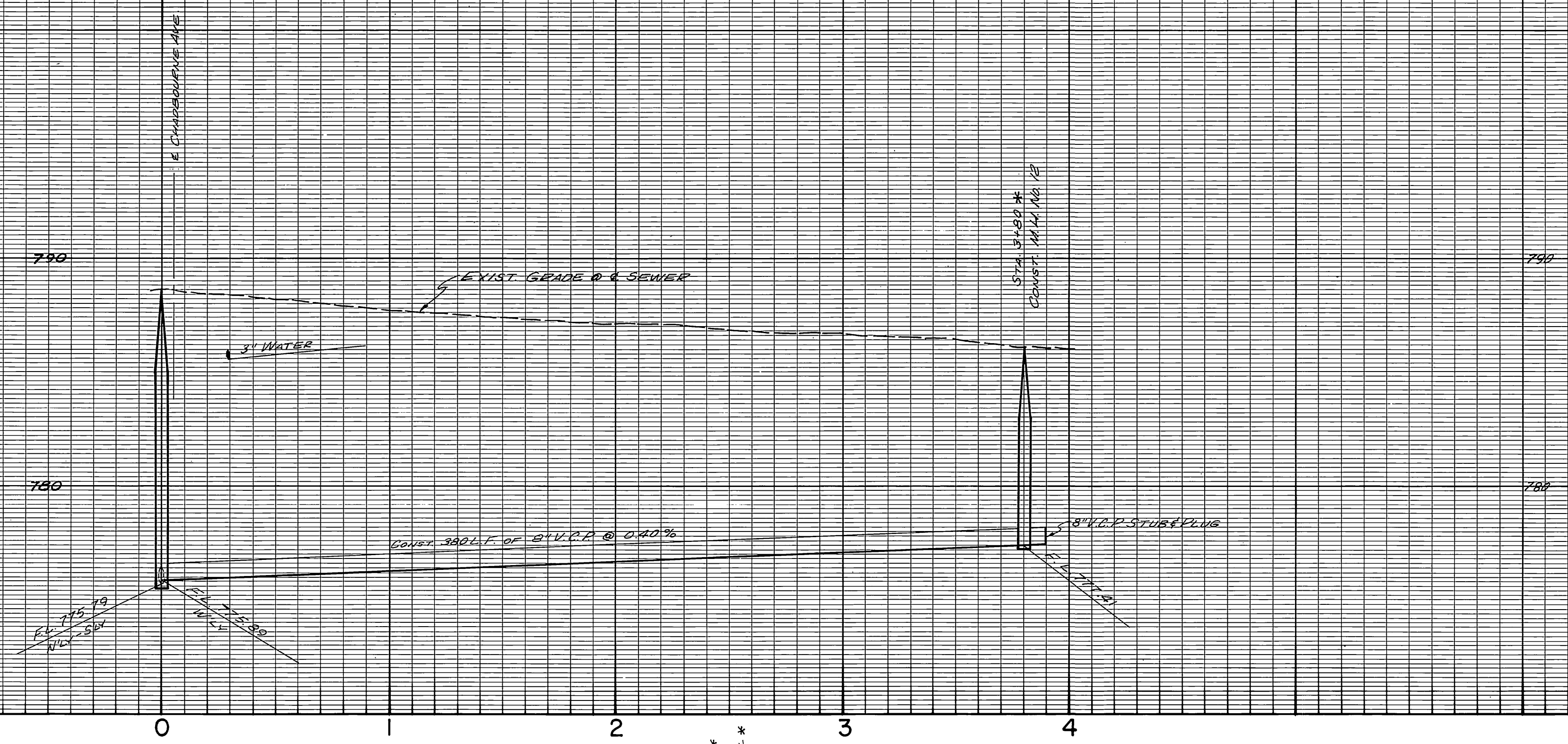
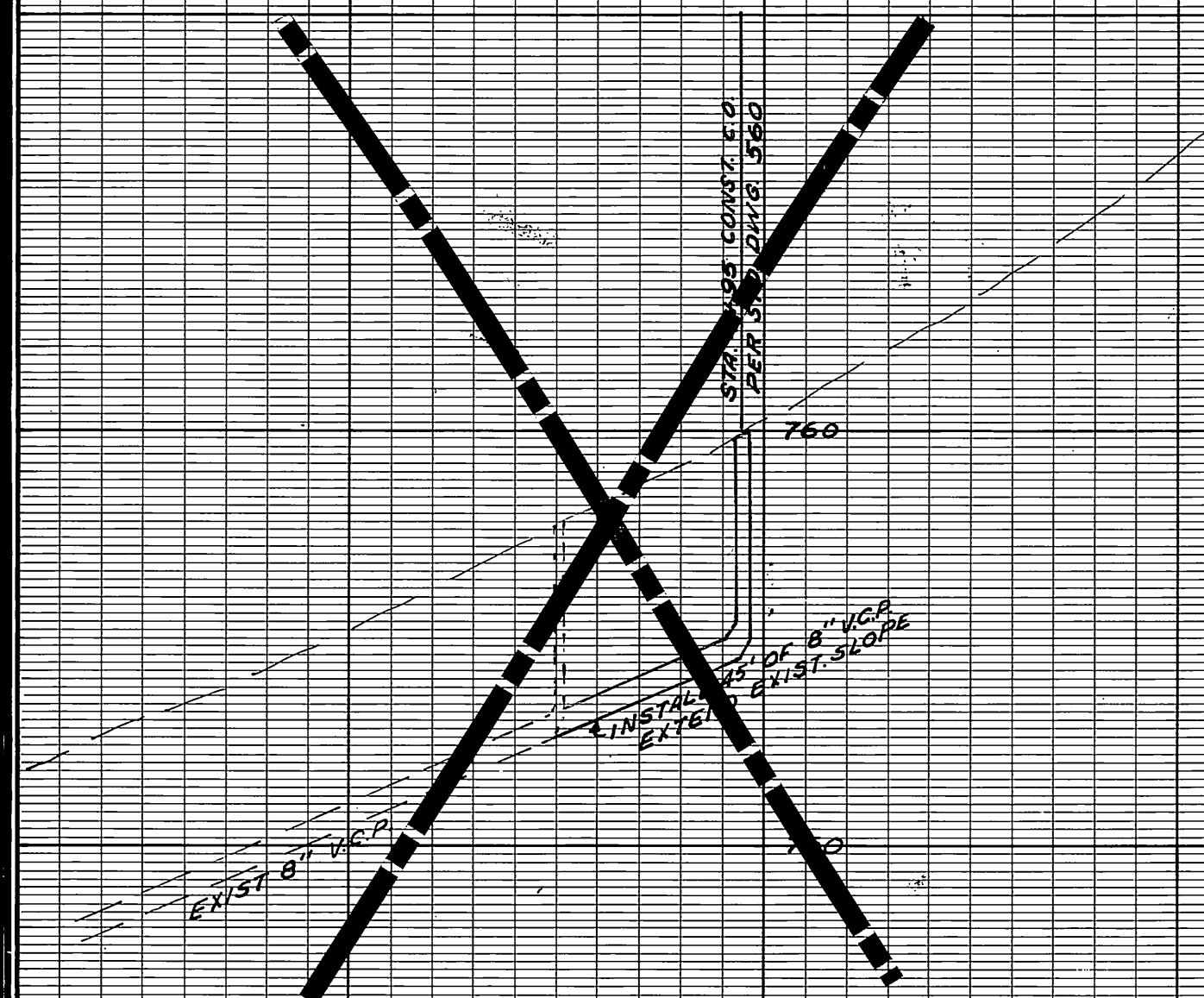
CHADBOURNE  
SEE SHEET 5 OF 5  
BLOCK 9

BLOCK 10  
HEIGHTS

△ INDICATES LOCATION OF BORING TAKEN 12-5-67

\* AS BUILT 11-23-68 R.F. 5'

CITY OF RIVERSIDE, CALIFORNIA DEPARTMENT OF PUBLIC WORKS		STOVER-CAMPBELL ASSESSMENT DISTRICT		ACCOUNT NO. 6074
APPROVED BY SENIOR ENGINEER PARK DEPARTMENT TRAFFIC DIVISION ASSISTANT CITY ENG.	BY DATE 7/26/68 [Signature]	APPROVED BY DIRECTOR OF PUBLIC WORKS [Signature]	S-704 SHEET 4 OF 5	
MARK REVISIONS DESIGNED BY DRAWN BY CHECKED BY	APPR. DATE DATE 5/29/68	HORIZ. SCALE: 1" = 40' VERT. SCALE: 1" = 4' S.S. PROJECT NO.		



\* AS BUILT 11-27-68 K.S.

CITY OF RIVERSIDE, CALIFORNIA DEPARTMENT OF PUBLIC WORKS				STOVER-CAMPBELL ASSESSMENT DISTRICT		ACCOUNT NO. 6074 S-704	
APPROVED BY SENIOR ENGINEER		BY PARK DEPARTMENT		DATE 5-15		APPROVED BY DIRECTOR OF PUBLIC WORKS	
MARK DESIGNED BY		REVISIONS DRAWN BY		APPR. DATE CHECKED BY		DATE 5/20/68	
HORIZ. SCALE: 1" = 40'				VERT. SCALE: 1" = 4'		SHEET 5 OF 5 S.S. PROJECT NO.	