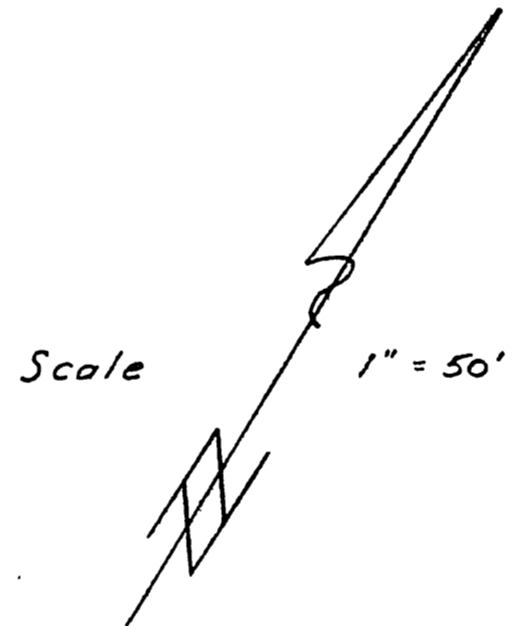


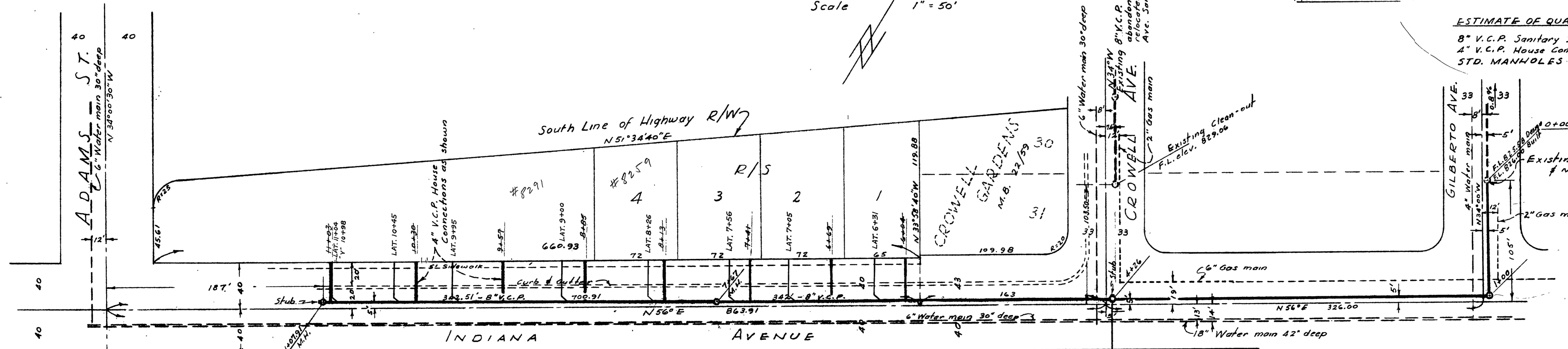
PROFILE	DATE
NO. 5-71	
DATE	
BY	
REVISIONS	
NO.	
DESCRIPTION	
DATE	
BY	



BENCH MARK - CAP. MON. INDIANA & CROWELL, ELEV. 834.84  
CONSTRUCTION TO BE IN ACCORDANCE WITH STANDARDS &  
SPECIFICATIONS OF THE CITY OF RIVERSIDE DEPT. OF PUBLIC  
WORKS.  
MANHOLE RIMS TO BE SET TO MEET EXISTING PAVING.

ESTIMATE OF QUANTITIES

8" V.C.P. Sanitary Sewer	1108 LIN. FT.
4" V.C.P. House Connections	280 LIN. FT.
STD. MANHOLES	4



0+00 = 9+13.31, M.H. #6 Sewer Plan for Crowell Gardens dated Sept. 1, 1954 - City NS 1402A  
Existing 8" V.C.P. Sanitary Sewer & Manhole (Join stub)

Red Lines 4-357 Laterals as built. NB  
ALBERT A. WEBB ASSOCIATES  
CIVIL ENGINEERS  
APPROVED BY *[Signature]* DATE 7/13/57  
CITY OF RIVERSIDE, CALIFORNIA  
DEPARTMENT OF PUBLIC WORKS

SEWER PLAN & PROFILE  
OF  
INDIANA AVENUE  
AND  
CROWELL AVENUE

HORIZ. SCALE 1" = 50' VERT. SCALE 1" = 5'  
APPROVED BY *[Signature]* NO. S-71  
DIRECTOR OF PUBLIC WORKS  
DATE Feb 5 1957 SHEET 1 OF 1

PLAN	DATE
NO. 5-71	
DATE	
BY	
REVISIONS	
NO.	
DESCRIPTION	
DATE	
BY	