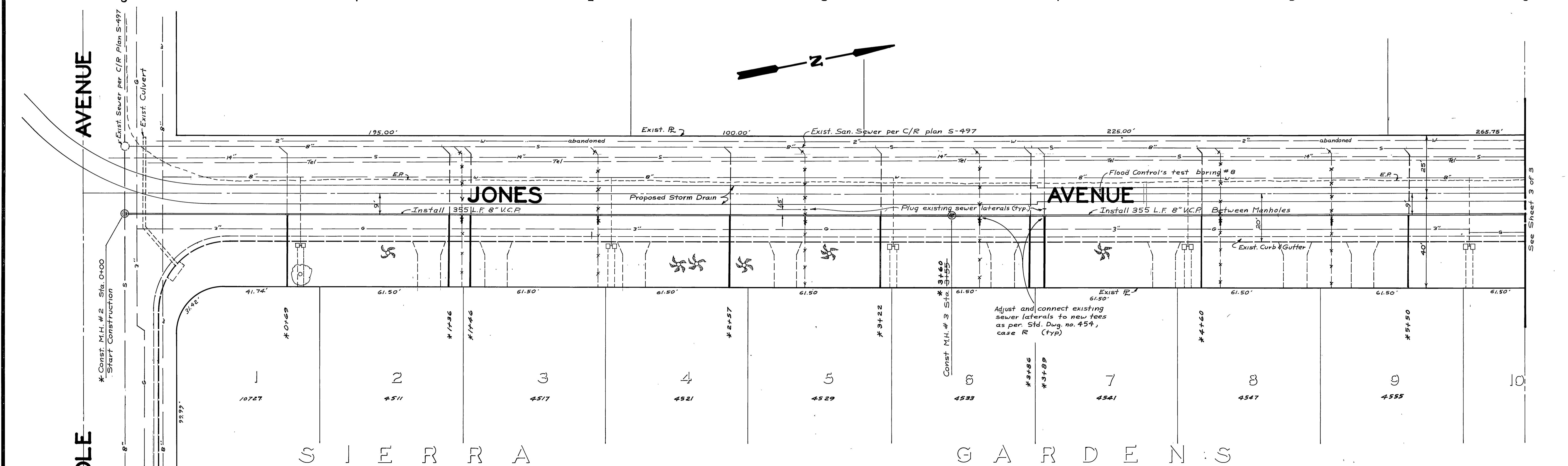
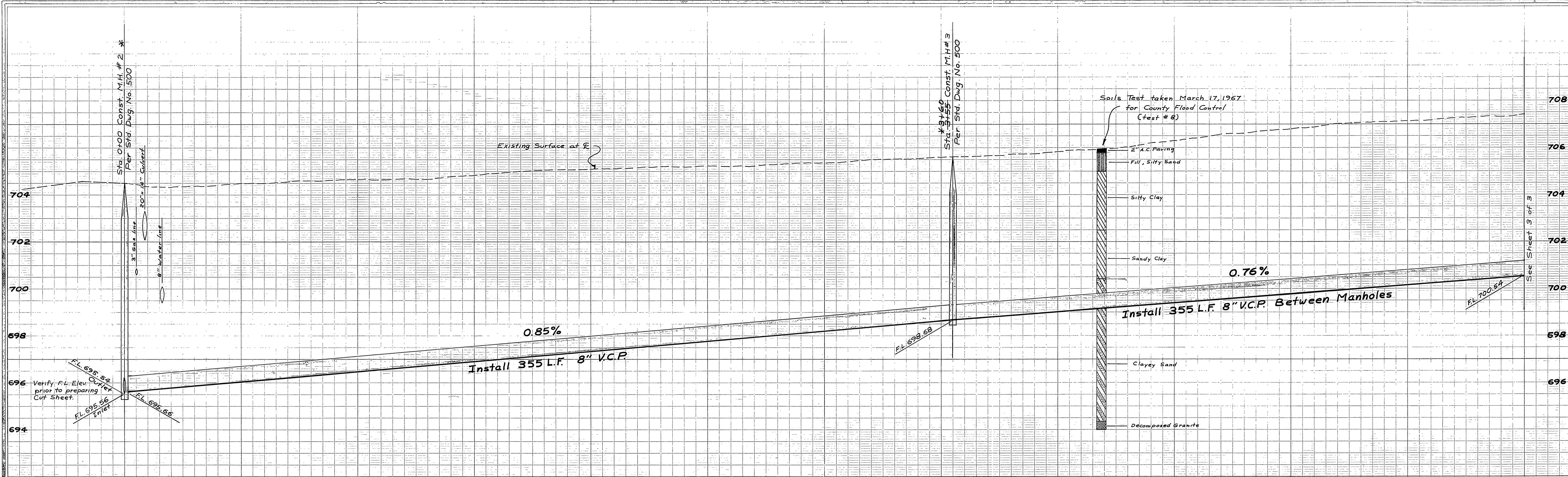


- CAUTION -
PACIFIC TELEPHONE
CABLES UNDERGROUND
 BEFORE EXCAVATING
CALL COLLECT:

Orange County	714-633-0811	714-547-6606
Riverside County	714-684-0071	714-547-6606
Inyo County	714-684-0071	714-547-6606
San Bernardino County	714-684-0071	714-547-6606
Los Angeles County	213-621-3111	24 HOUR SERVICE
Ventura County	213-621-3111	24 HOUR SERVICE
San Diego County	714-298-0595	714-232-0027

FOR FREE CABLE LOCATING SERVICE

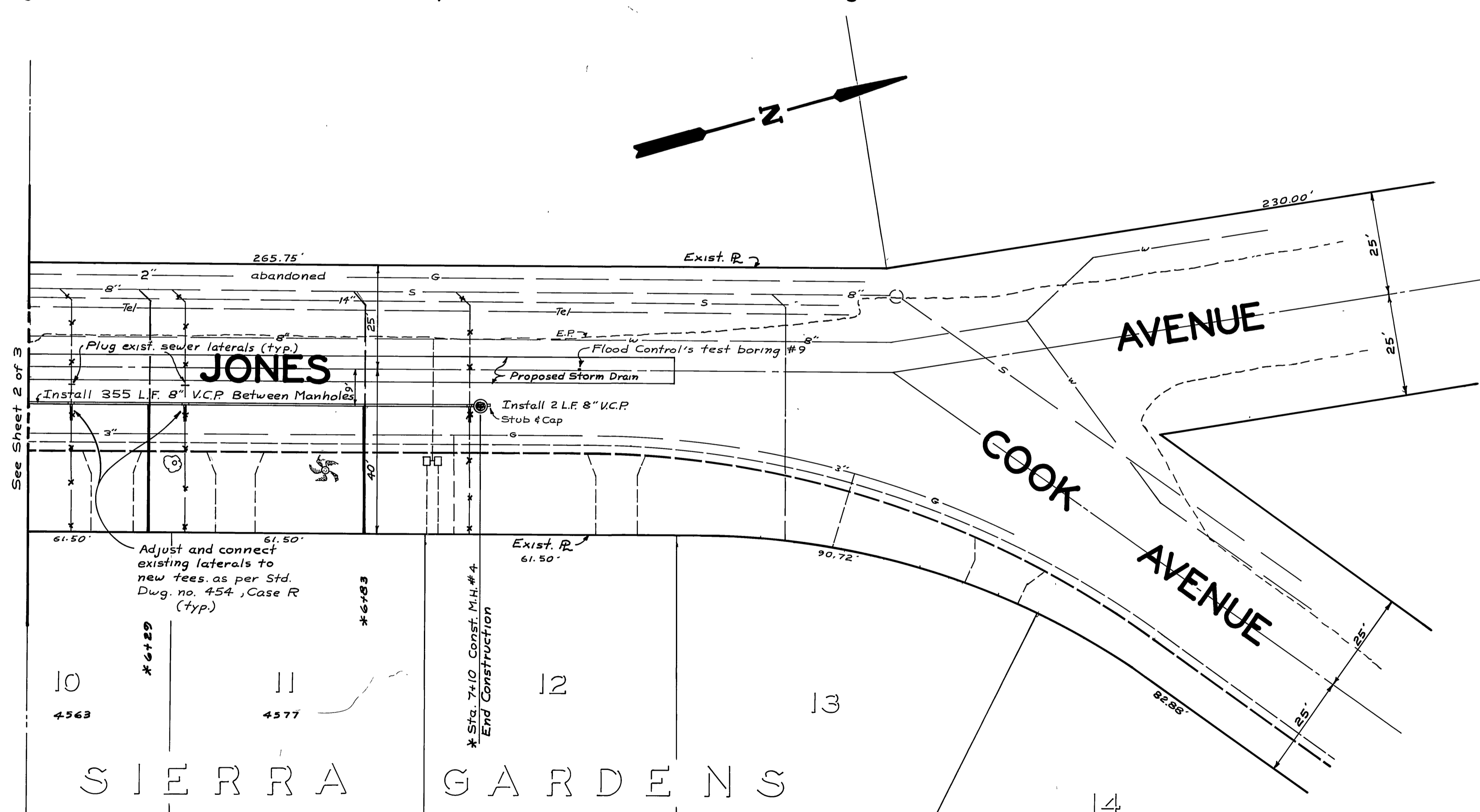
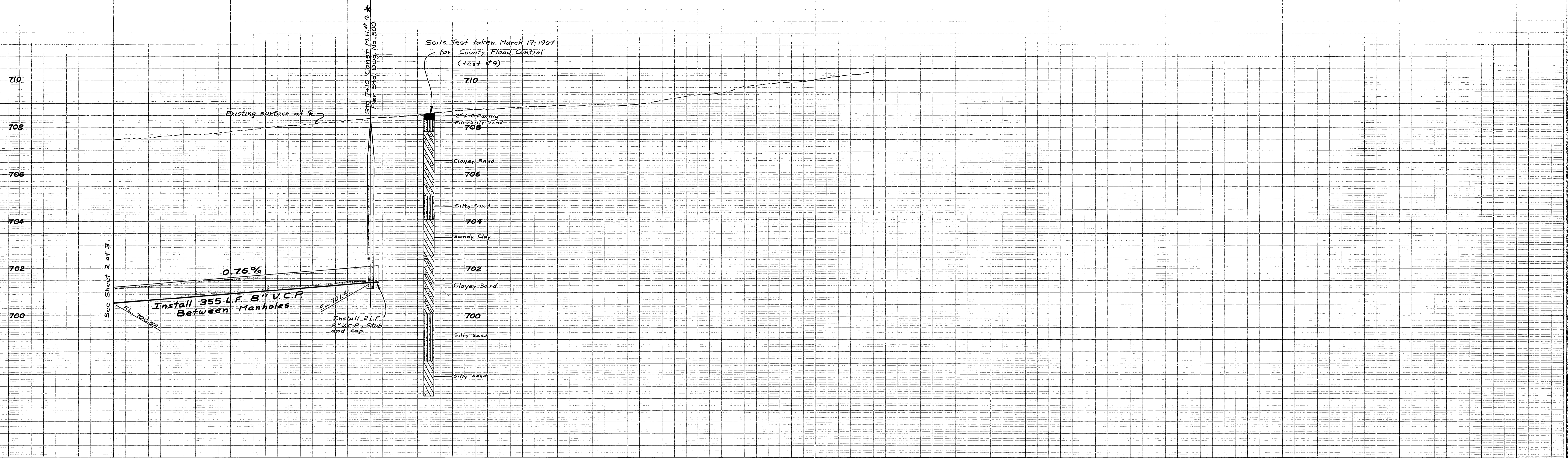
CITY OF RIVERSIDE, CALIFORNIA DEPARTMENT OF PUBLIC WORKS				HOLE & JONES AVENUE SEWER RELOCATIONS		PROJECT NO. 5118	
APPROVED BY OFFICE ENGINEER PARK DEPARTMENT		BY DATE 7/26/68		APPROVED BY <i>[Signature]</i> DIRECTOR OF PUBLIC WORKS		HOLE AVENUE	
TRAFFIC DIVISION				DATE 3-4-68		SHEET 1 OF 3	
DESIGNED BY DCK DRAWN BY DCK CHECKED BY				HORIZ. SCALE: 1" = 20'		VERT. SCALE: 1" = 2'	



-CAUTION-
PACIFIC TELEPHONE
CABLES UNDERGROUND
BEFORE EXCAVATING
CALL COLLECT:
 7:30 A.M. to 5 P.M. & Holidays
 After Hours
 Orange County 714-633-0811 714-547-8606
 Riverside County 714-684-0071 714-547-6606
 Inyo County 714-684-0071 714-547-6606
 San Bernardino County 714-684-0071 714-547-6606
 Los Angeles County 213-621-3111 24 HOUR SERVICE
 Ventura County 213-621-3111
 San Diego County 714-298-0595 714-232-0027
FOR FREE CABLE LOCATING SERVICE

*AS BUILT 6-7-68 K.S. 7E

CITY OF RIVERSIDE, CALIFORNIA DEPARTMENT OF PUBLIC WORKS		HOLE & JONES AVENUE SEWER RELOCATIONS		PROJECT NO. 5118 S-717
APPROVED BY: [Signature] OFFICE ENGINEER PARK DEPARTMENT TRAFFIC DIVISION ASSISTANT CITY ENG. [Signature]	BY: [Signature] DATE: 7/26/5-1 DATE: 3-4-68	JONES AVENUE		SHEET 2 OF 3 FILE NO.
DESIGNED BY: DCK DRAWN BY: DCK CHECKED BY:		HORIZ. SCALE: 1" = 20' VERT. SCALE: 1" = 2'		



-CAUTION-
PACIFIC TELEPHONE
CABLES UNDERGROUND
 BEFORE EXCAVATING
 CALL COLLECT:

Orange County	714-433-0811	714-547-6606
Riverside County	714-684-0071	714-547-6606
Inyo County	714-684-0071	714-547-6606
San Bernardino County	714-684-0071	714-547-6606
Los Angeles County	213-621-3111	24 HOUR SERVICE
Ventura County	213-621-3111	
San Diego County	714-298-0595	714-232-0027

FOR FREE CABLE LOCATING SERVICE

*AS BUILT 6-7-68 K.F. BE

DESIGNED BY <i>DCK</i>		DRAWN BY <i>DCK</i>		CHECKED BY	
APPROVED BY		DATE		APPROVED BY	
OFFICE ENGINEER		7/16/69		DIRECTOR OF PUBLIC WORKS	
PARK DEPARTMENT		24 HOUR SERVICE		DATE 3-4-69	
TRAFFIC DIVISION		ASSISTANT CITY ENG.		DATE 3-4-69	
MARK		REVISIONS		APPR. DATE	
CITY OF RIVERSIDE, CALIFORNIA		DEPARTMENT OF PUBLIC WORKS		HOLE & JONES AVENUE SEWER RELOCATIONS	
PROJECT NO. 5118		S-717		SHEET 3 OF 3	
HORIZ. SCALE: 1" = 20'		VERT. SCALE: 1" = 2'		FILE NO.	