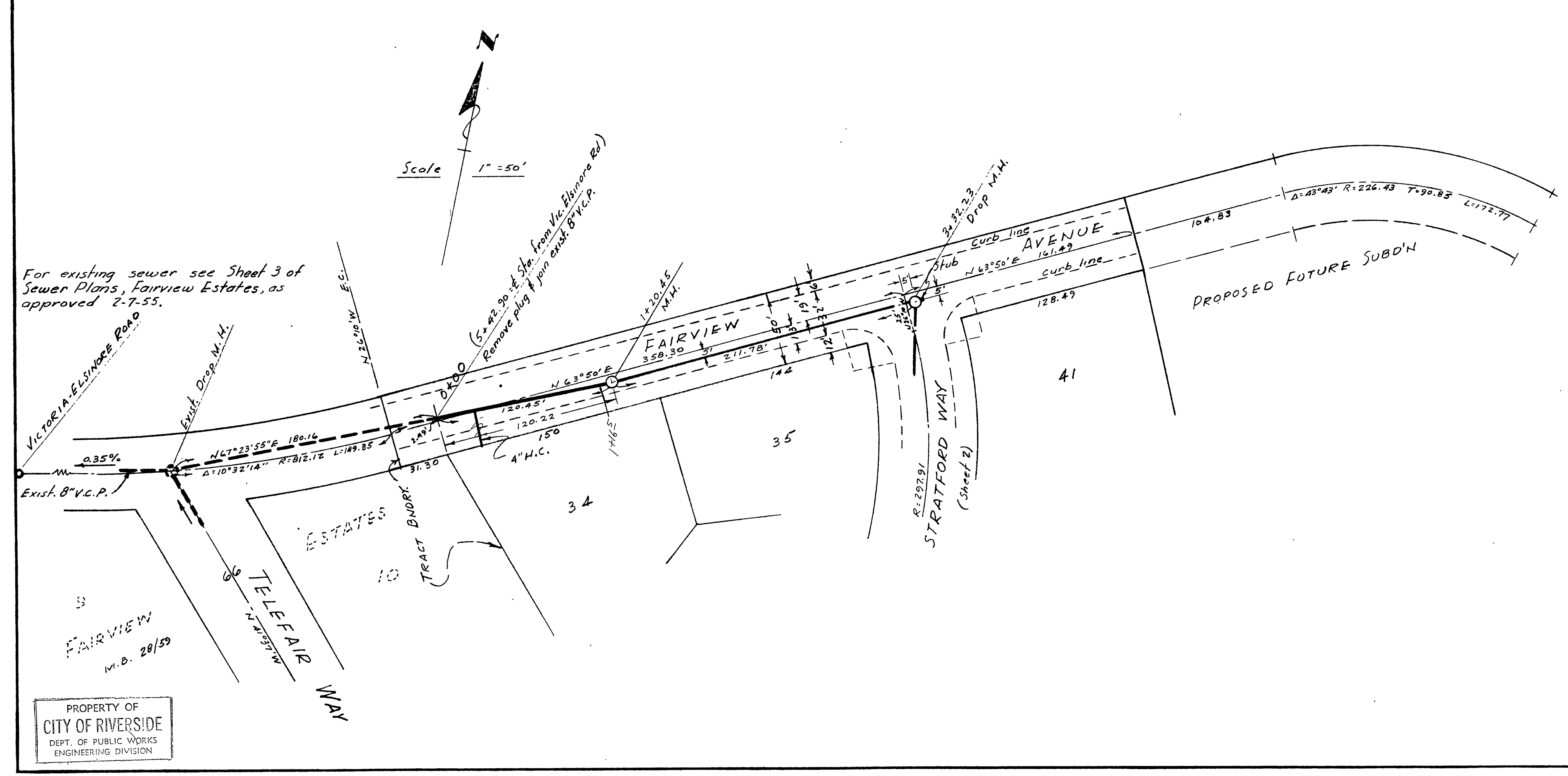


PROFILE	
SURVEYED	BY
PLOTTED	DATE
CHECKED	
NO.	



BENCH MARK - "X" ON GAGE CANAL BRIDGE AT VICTORIA-ELSINORE RD.  
ELEV. 1018.51

ESTIMATE OF QUANTITIES

8" V.C.P.	787 LIN. FT.
4" V.C.P. (9 H.C.)	290 LIN. FT.
MANHOLES - STD.	3
DROP	1

4" V.C.P. HOUSE CONNECTIONS TO BE LOCATED IN FIELD.

PLAN	
SURVEYED	BY
PLOTTED	DATE
CHECKED	
NO.	

For existing sewer see Sheet 3 of  
Sewer Plans, Fairview Estates, as  
approved 2-7-55.

PROPERTY OF  
CITY OF RIVERSIDE  
DEPT. OF PUBLIC WORKS  
ENGINEERING DIVISION

PREPARED BY ALBERT A. WEBB ASSOCIATES  
CIVIL ENGINEERS

APPROVED BY *Ernest M. Webb* DATE 2-14-57  
# 9876

CITY OF RIVERSIDE, CALIFORNIA  
DEPARTMENT OF PUBLIC WORKS

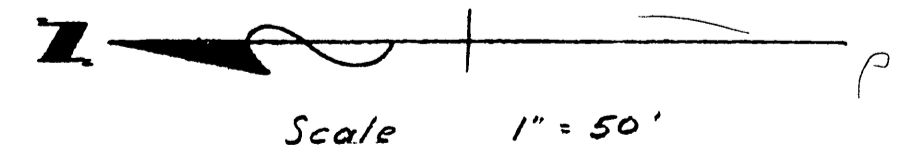
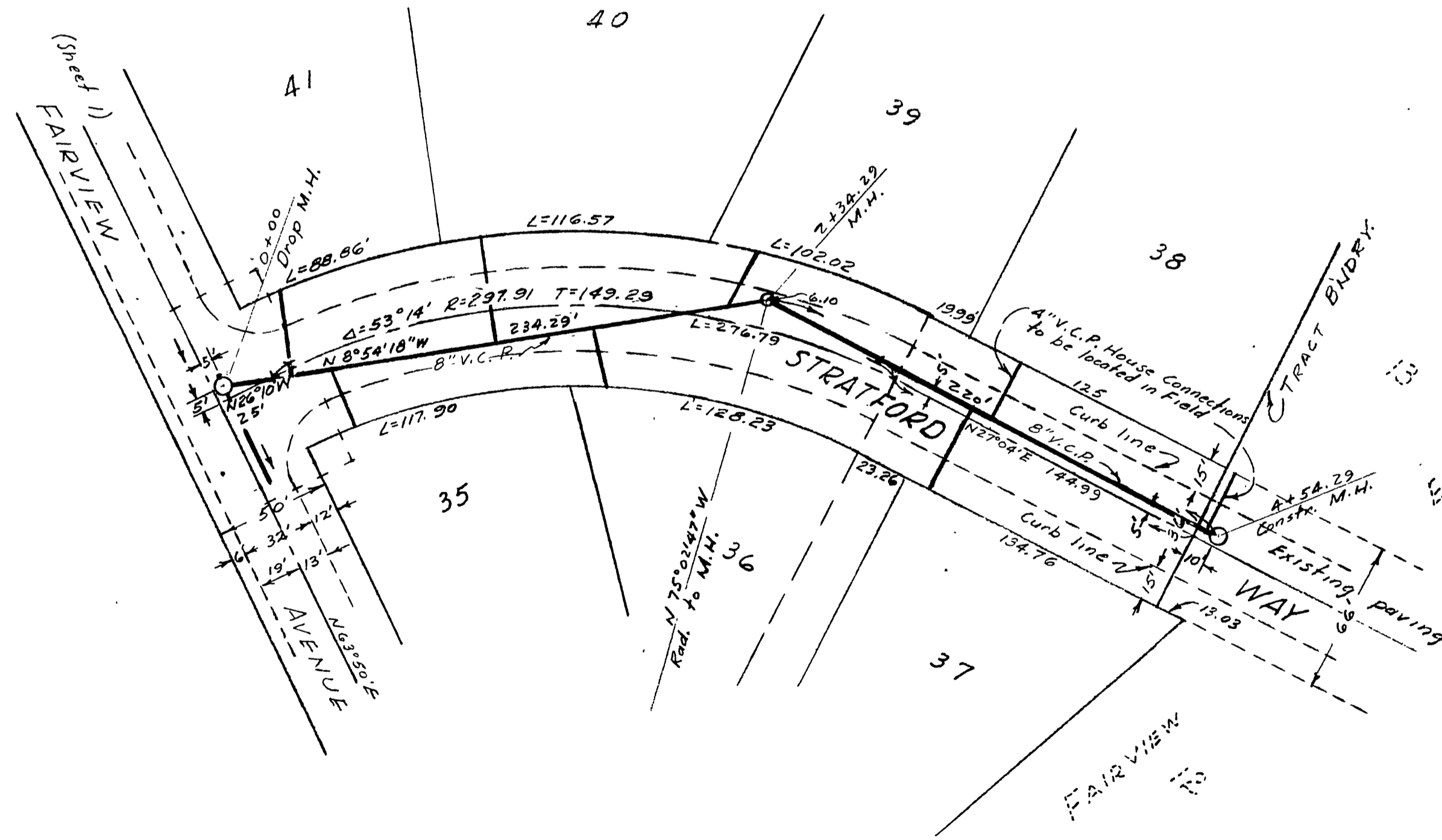
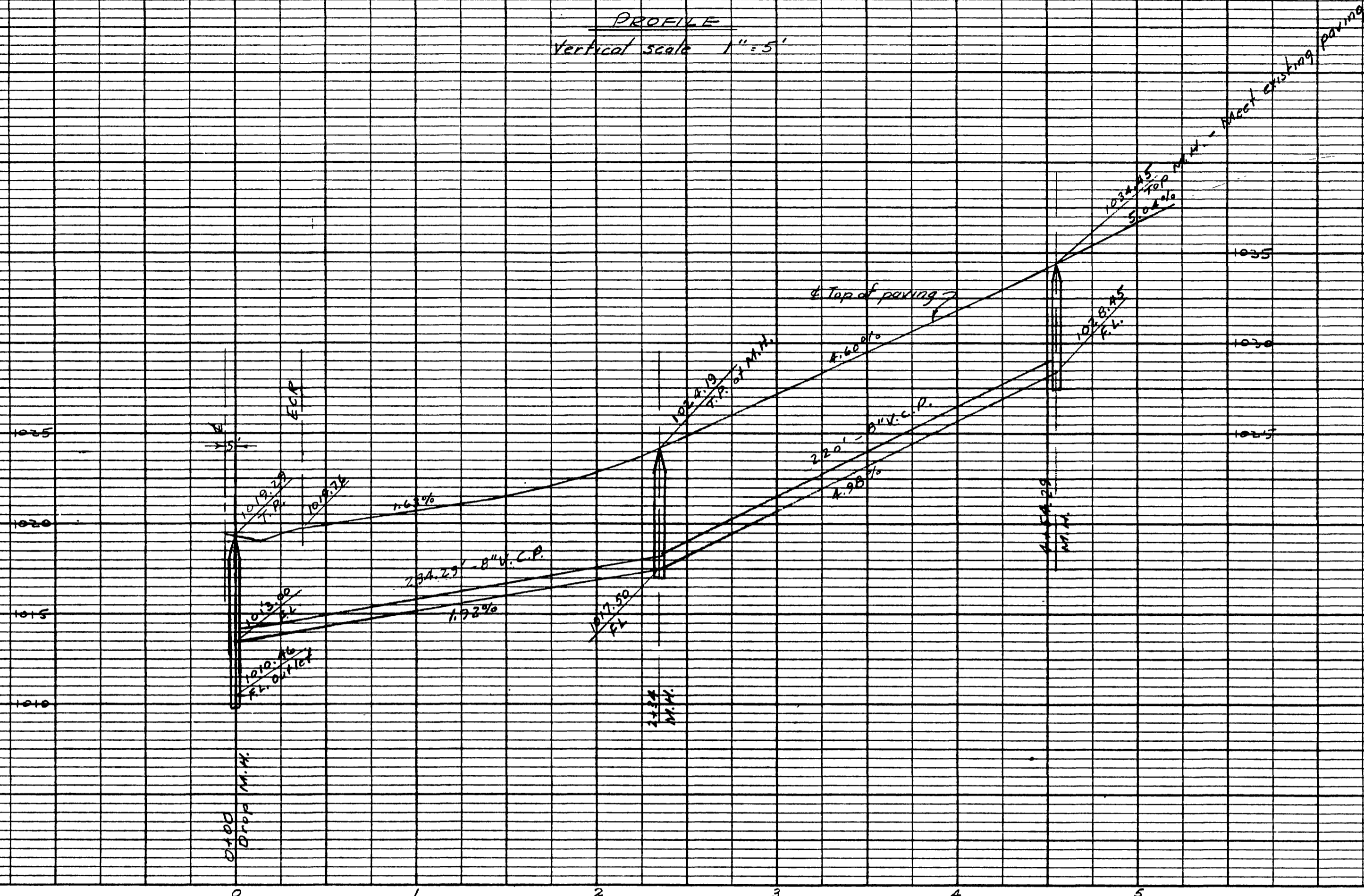
SEWER PLAN & PROFILE  
OF  
FAIRVIEW AVENUE  
IN  
FAIRVIEW ESTATES NO. 2

HORIZ. SCALE 1"=50' VERT. SCALE 1"=5'

APPROVED BY *James H. ...* NO. S-72  
DIRECTOR OF PUBLIC WORKS  
DATE March 6, 1957 SHEET 1 OF 2

F. B. 286  
W. O. 56-34





PROFILE	
SURVEYED	BY
NOTE BOOK	DATE
GRIDS CHECKED	
STRUCTURE/MOUNTING CHECKED	

PLAN	
SURVEYED	BY
ALIGNMENT CHECKED	DATE
RT. OF WAY CHECKED	

PREPARED BY ALBERT A. WEBB ASSOCIATES  
CIVIL ENGINEERS  
APPROVED BY *Emmett H. Webb* DATE 2-10-57  
CITY OF RIVERSIDE, CALIFORNIA  
DEPARTMENT OF PUBLIC WORKS

**SEWER PLAN & PROFILE  
OF  
STRATFORD WAY  
IN  
FAIRVIEW ESTATES NO. 2**

APPROVED BY *Emmett H. Webb* NO. S-72  
DIRECTOR OF PUBLIC WORKS  
DATE March 6, 1957 SHEET 2 OF 2