

INDEX	
SHEET 1	TITLE SHEET
" 2	NORWOOD PL., CAMPBELL TO ROBINSON
" 3	" " ROBINSON TO CYPRESS
" 4	" " CYPRESS TO ARLINGTON
" 5	ARLINGTON AVE., FROM NORWOOD, ELY
" 6	ROBINSON AVE., NORWOOD TO CHADBOURNE
" 7	CHADBOURNE AVE., ROBINSON TO CYPRESS
" 8	CINDY LANE, FROM CHADBOURNE, WLY
" 9	CYPRESS AVE., NORWOOD TO CHADBOURNE & 350' ELY
" 10	ARLINGTON AVE., STOVER TO NORWOOD

RIVERSIDE



CALIFORNIA

DEPARTMENT OF PUBLIC WORKS

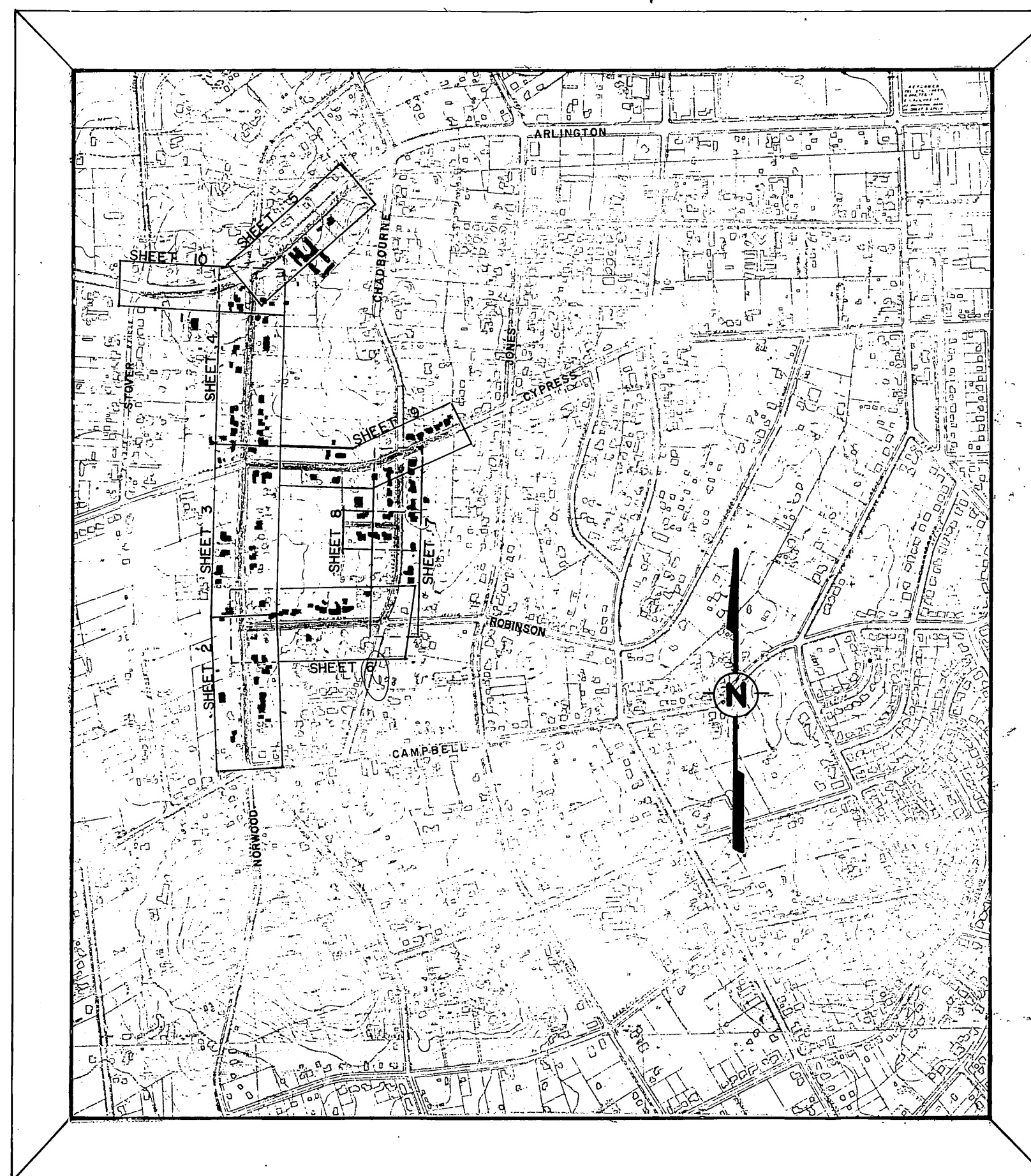
NORWOOD-CYPRESS ASSESSMENT DISTRICT

(SEWER)

X INDICATES,

LATERAL LOCATIONS FURNISHED BY PROPERTY OWNERS
ARE ON FILE AT DEPARTMENT OF PUBLIC WORKS

NOTE: USE CASE I BEDDING PER C/R
STD. DRW. 452
FOR MH SEE STD DRW 500



CONSTRUCTION LEGEND

	CONSTRUCT CURB & GUTTER PER C/R STD. DWG. 200		MANHOLE		CHIMNEY		LATERAL CLEANOUT		SANITARY SEWER
	CONSTRUCT DRIVEWAY APPROACH PER C/R STD. DWG. 302		CLEANOUT BOX M.H.		C.B.		STORM DRAIN		REMOVE TREE
	CONSTRUCT SIDEWALK PER C/R STD. DWG.		TRANSPLANT TREE CLASS I		TRANSPLANT TREE CLASS II		REMOVE TREE NO CLASS SIZE		TRANSPLANT TREE NO CLASS SIZE
	CONSTRUCT A.C. OVERLAY		ADJUST EXISTING MANHOLE TO GRADE.		CONSTRUCT A.C. OVER CLASS 3 A.B.		CENTER LINE		RIGHT-OF-WAY LINE
			SUBDIVISION LOT LINE						

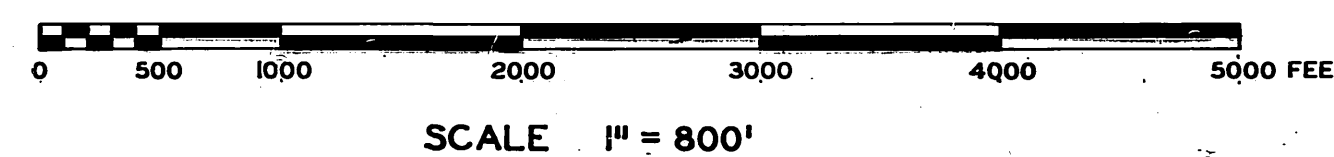
EXISTING CULTURE & UNDERGROUND LEGEND

EXISTING UNDERGROUND UTILITIES			
SANITARY SEWER	8" VCP - S	TELEPHONE CONDUIT	T - T
WATER LINE	6" CI - W	ELECTRICAL CONDUIT	E - E
STORM DRAIN	24" RCP - SD	STREET LIGHTING	SL - SL
CULVERT	18" CONC - C	TRAFFIC SIGNAL	SIG - SIG
IRRIGATION LINE	20" IRR - IRR	FIRE ALARM	F - F
GAS LINE	3" M - G	ABANDONED UTILITY	- - - - -

EXISTING TOPOGRAPHY

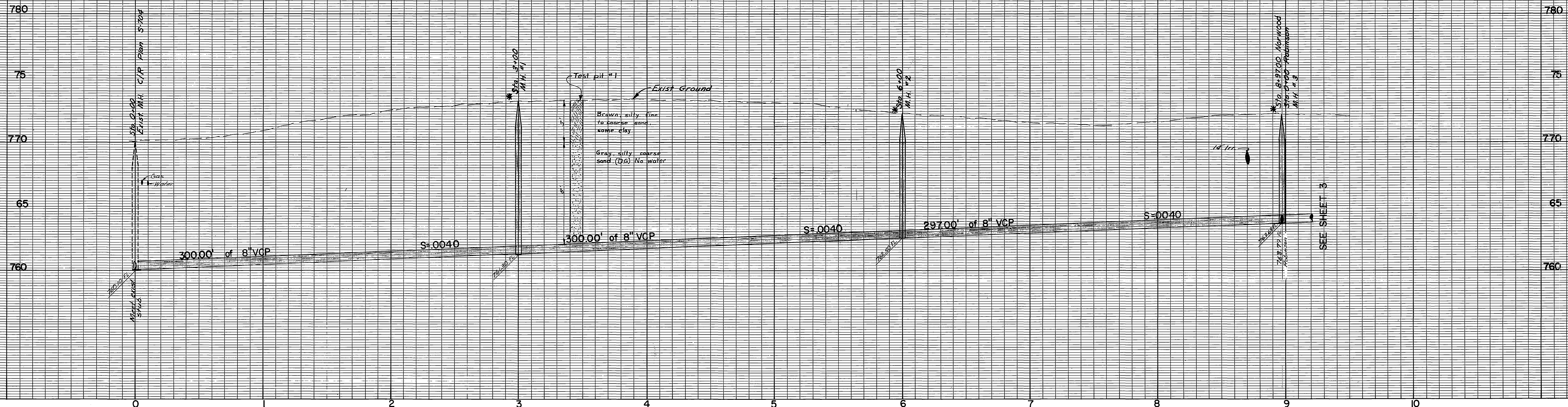
	SANITARY SEWER MH		POWER POLE		RAILROAD TRACKS
	SANITARY SEWER CLEANOUT		GUY POLE		RAILROAD SIGN
	STORM DRAIN MH		POLE & GUY ANCHOR		RAILROAD SIGNAL
	IRRIGATION WEIR		PULL BOX		STREET LIGHT
	WATER MH		TRAFFIC SIGN		TRAFFIC SIGNAL
	GAS MH		PARKING METER		TRAFFIC SIGNAL ON MAST ARM
	ELECTRIC MH		FIRE ALARM BOX		TRAFFIC CONTROL BOX
	TELEPHONE MH OR VAULT		GAS METER		TRAFFIC SIGNAL DETECTOR
	WATER METER		MAIL BOX		PEDESTRIAN CONTROL FOR TRAFFIC SIGNAL
	FIRE HYDRANT		ELECTRICAL CONDUIT IN CROSS SECTION		
	SPRINKLER HEAD				
	WATER VALVE				
	GAS VALVE				
	HYDRANT OR FAUCET				
	CONCRETE		TREE SHOWING DIAMETER IN INCHES		
	ASPHALT		PALM SHOWING DIAMETER IN INCHES		
	EDGE OF PAVEMENT		SHRUBBERY		
	BUILDING		TREE STUMP DIAMETER IN INCHES		
	UNDERGROUND OR OVERHANGING STRUCTURE		TOP OF SLOPE		
	BLOCK WALL		TOE OF SLOPE		
	BOARD FENCE		DIRECTION OF FLOW		
	WIRE FENCE				
	CHAIN LINK FENCE				

PROJECT LOCATION PLAN



* AS BUILT J.P.G. 6/22/70
7066

NORWOOD-CYPRESS ASSESSMENT DISTRICT			
APPROVED BY	BY DATE	APPROVED BY	PROJECT NO. 6079
OFFICE ENGINEER	M 1/4/69	<i>[Signature]</i>	S-720
TRAFFIC DIVISION		DIRECTOR OF PUBLIC WORKS	
ASSISTANT CITY ENG.	J.P.G. 1/3/69	DATE	
DESIGNED BY	DRAWN BY	CHECKED BY	S.S. NO.



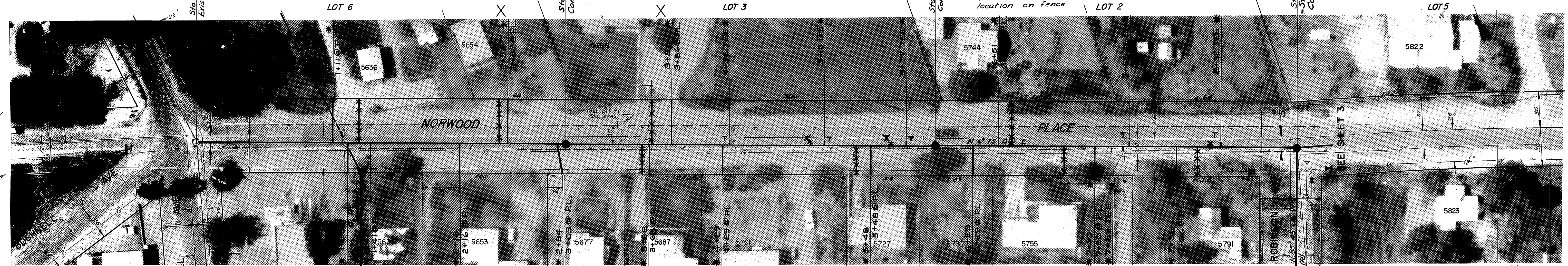
CHADBOURNE

BLOCK 3



X
Owner will mark
location on fence

BMI 1, 771.15, RR spike in Pole 28247J on NW cor. Campbell & Norwood 659/69
 BM6, 773.13, RR spike in Pole 28250J on west side Norwood, 400' Sly Robinson 704/53,64

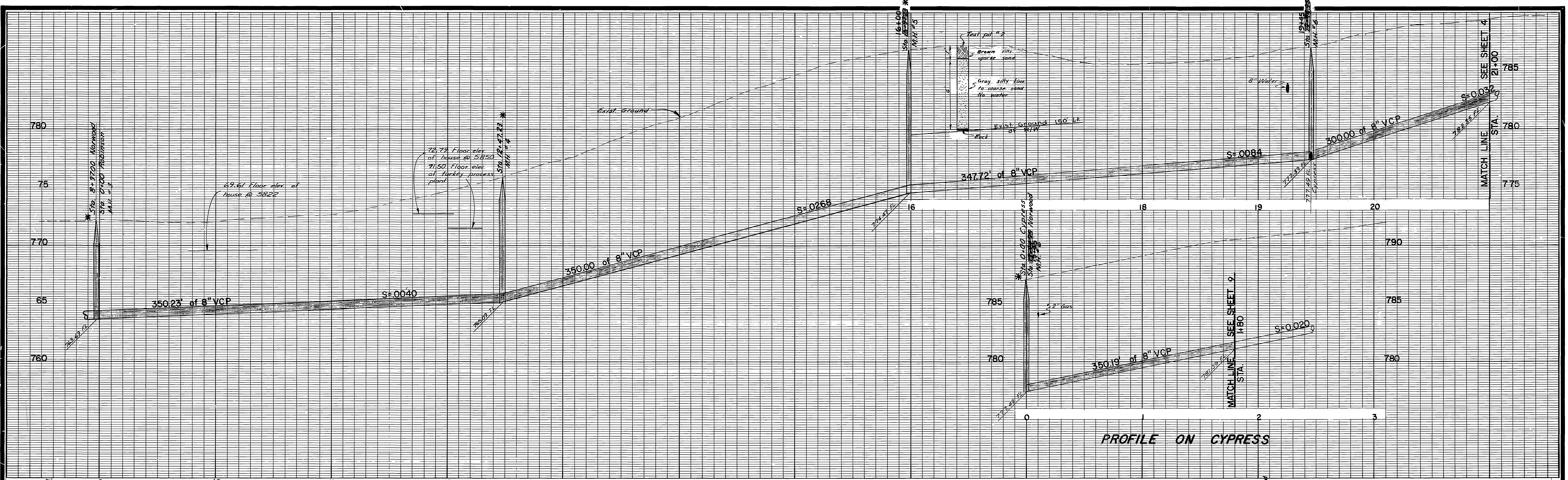


BLOCK 9
HEIGHTS

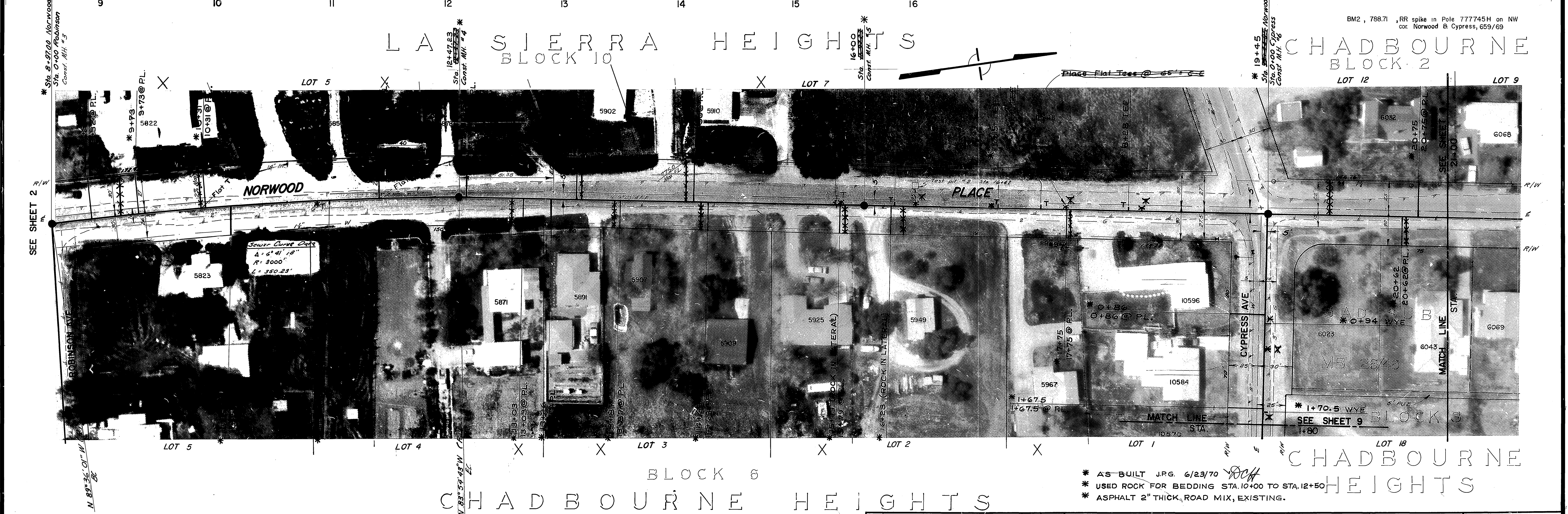
FOR ROBINSON
SEE SHEET 6

* AS BUILT J.P.G. 6/22/70
RCH

CITY OF RIVERSIDE, CALIFORNIA DEPARTMENT OF PUBLIC WORKS		NORWOOD-CYPRESS ASSESSMENT DISTRICT		ACCOUNT NO. 6079
APPROVED BY SENIOR ENGINEER PARK DEPARTMENT TRAFFIC DIVISION ASSISTANT CITY ENG.	BY DATE 1/13/69	APPROVED BY <i>[Signature]</i> DIRECTOR OF PUBLIC WORKS	SHEET 2 OF 10	
DESIGNED BY J. C. G. DRAWN BY G. S. CHECKED BY D. C. H.		DATE 1-13-69	HORIZ. SCALE: 1" = 40' VERT. SCALE: 1" = 4'	
		NORWOOD PLACE		S.S. PROJECT NO.



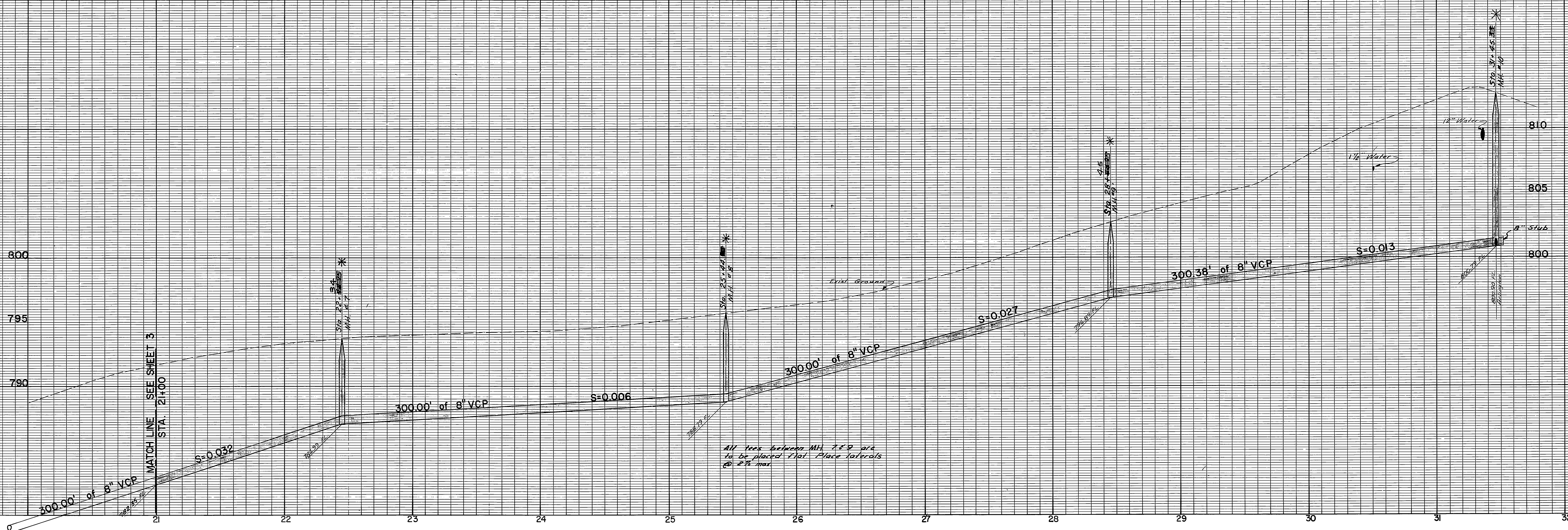
PROFILE ON CYPRESS



BM2, 768.71, RR spike in Pole 777745H on NW cor. Norwood & Cypress, 659/69

* AS-BUILT J.P.G. 6/23/70
 * USED ROCK FOR BEDDING STA. 10+00 TO STA. 12+50
 * ASPHALT 2" THICK, ROAD MIX, EXISTING.

CITY OF RIVERSIDE, CALIFORNIA DEPARTMENT OF PUBLIC WORKS		NORWOOD-CYPRESS ASSESSMENT DISTRICT	ACCOUNT NO. 6079
APPROVED BY PARK DEPARTMENT TRAFFIC ENGINEER	DATE 7/70	APPROVED BY <i>[Signature]</i> DIRECTOR OF PUBLIC WORKS	S720
MARK	REVISIONS	APPR. DATE	SHEET 3 OF 10
DESIGNED BY <i>[Signature]</i>	DRAWN BY <i>[Signature]</i>	CHECKED BY <i>[Signature]</i>	S.S. PROJECT NO.
		DATE 1-13-69	HORIZ. SCALE: 1" = 40' VERT. SCALE: 1" = 4'



All Tees between MH 27 & 29 are to be placed 1' from Place laterals @ 2' max



BM, 778.71, RR spk. in Pole
77745 H on NW cor.
Norwood & Cypress
BM, 812.65, PK nail in NE cor.
Norwood & Arlington
FB 659/69 & 704/37

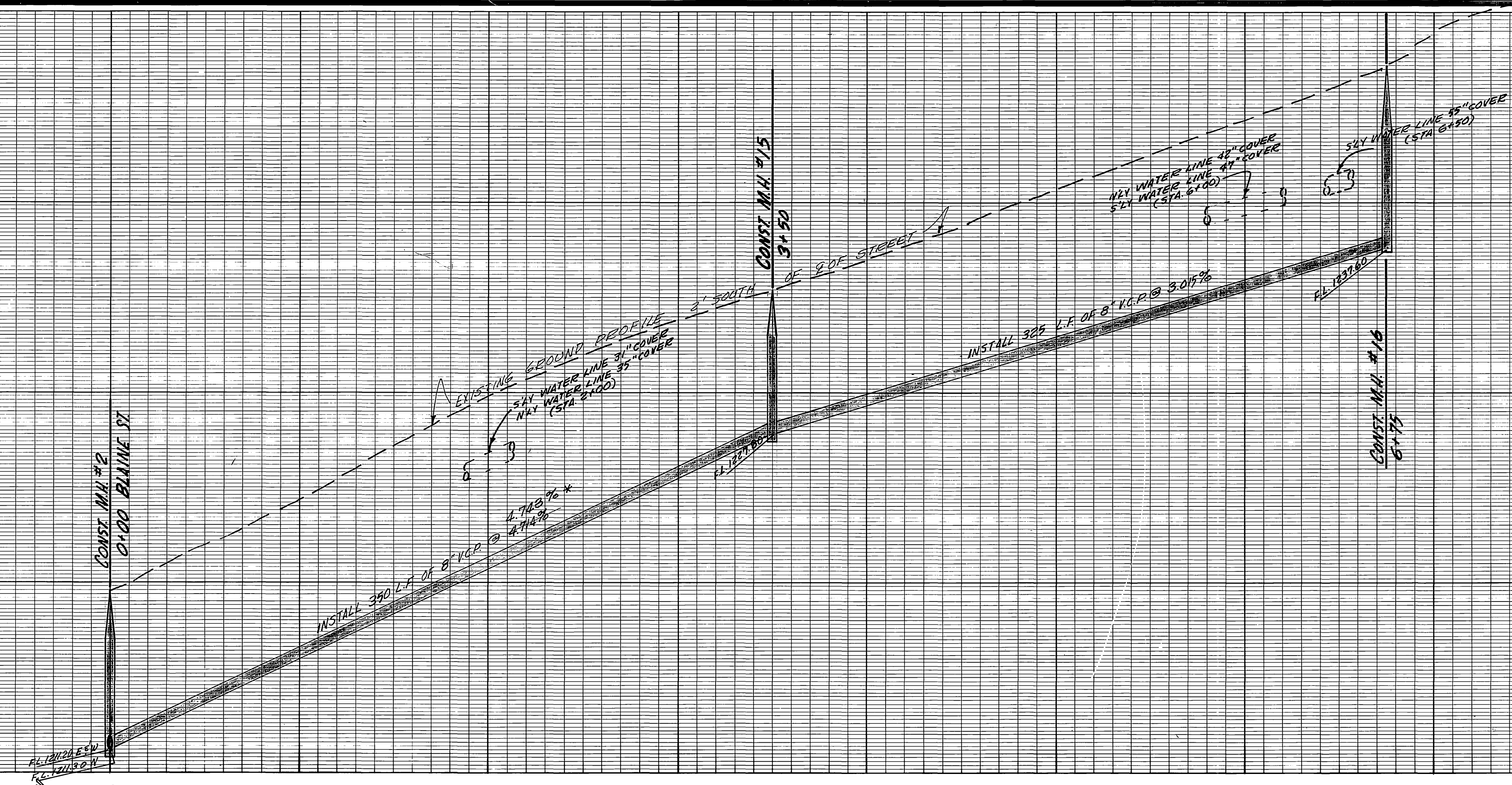
Caution, 12" water line
asbestos pipe

FOR ARLINGTON
SEE SHEET 5

* AS BUILT J.P.G. 6/23/70
* ASPHALT 1" THICK ROAD MIX, EXISTING.

CITY OF RIVERSIDE, CALIFORNIA DEPARTMENT OF PUBLIC WORKS		NORWOOD-CYPRESS ASSESSMENT DISTRICT		ACCOUNT NO. 6079
APPROVED BY	BY DATE	APPROVED BY	S-720	
SENIOR ENGINEER	12/70	<i>[Signature]</i>	SHEET 4 OF 10	
DIRECTOR OF PUBLIC WORKS				
MARK	REVISIONS	APPR. DATE	DATE 1-13-69	
DESIGNED BY <i>[Signature]</i>	DRAWN BY <i>[Signature]</i>	CHECKED BY <i>[Signature]</i>	HORIZ. SCALE: 1" = 40' VERT. SCALE: 1" = 4'	
			S.S. PROJECT NO.	

1240
1230
1220
1210



F.B.: M-1/63-79, M-2/47-59, 62
B.M.: PK NAIL IN D/W TO HOUSE NUMBER
7176 BELVEDERE @ W/S ALLEY ON S/S
BELVEDERE @ TERRACE DR. ELEV. 1249.22

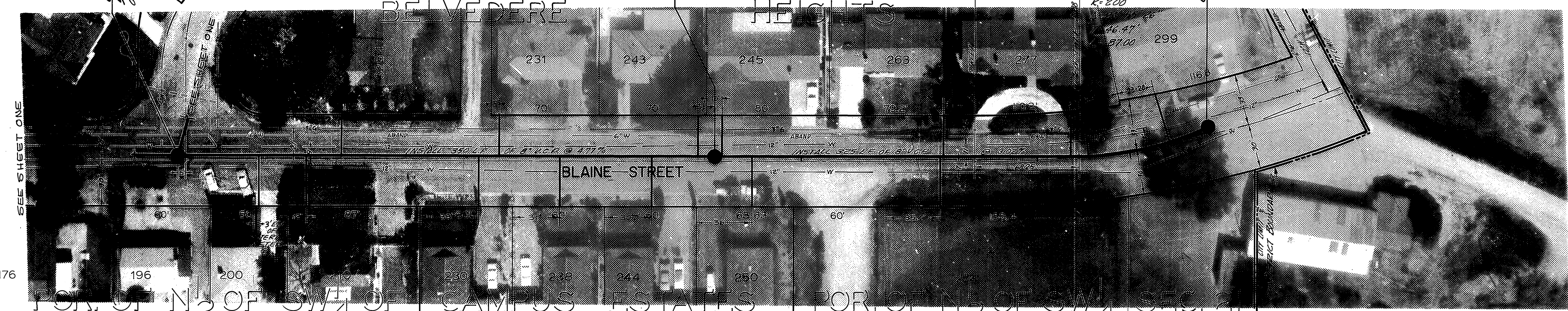
CONST. M.H. #2
5'-00.57' AHEAD (N.Y.) 0'-00.00' AHEAD
ON BLAINE ST.

CONST. M.H. #15
3'-50'

CONST. M.H. #16
6'-75'

CONST. M.H. #15
3'-50'

CONST. M.H. #16
6'-75'



SEE SHEET ONE

SEC. 21

*0-1485
*0-475 @ P.L.
CONST. LATERAL []

*0-180
*0-187 @ P.L.
CONST. LATERAL []

CONST. LATERAL []
*1-108

CONST. LATERAL []
*2-148

CONST. LATERAL []
*3-100

CONST. LATERAL []
*3-125
*3-173 @ P.L.

INSTALL TEE
*4-115

CONST. LATERAL []
*4-195

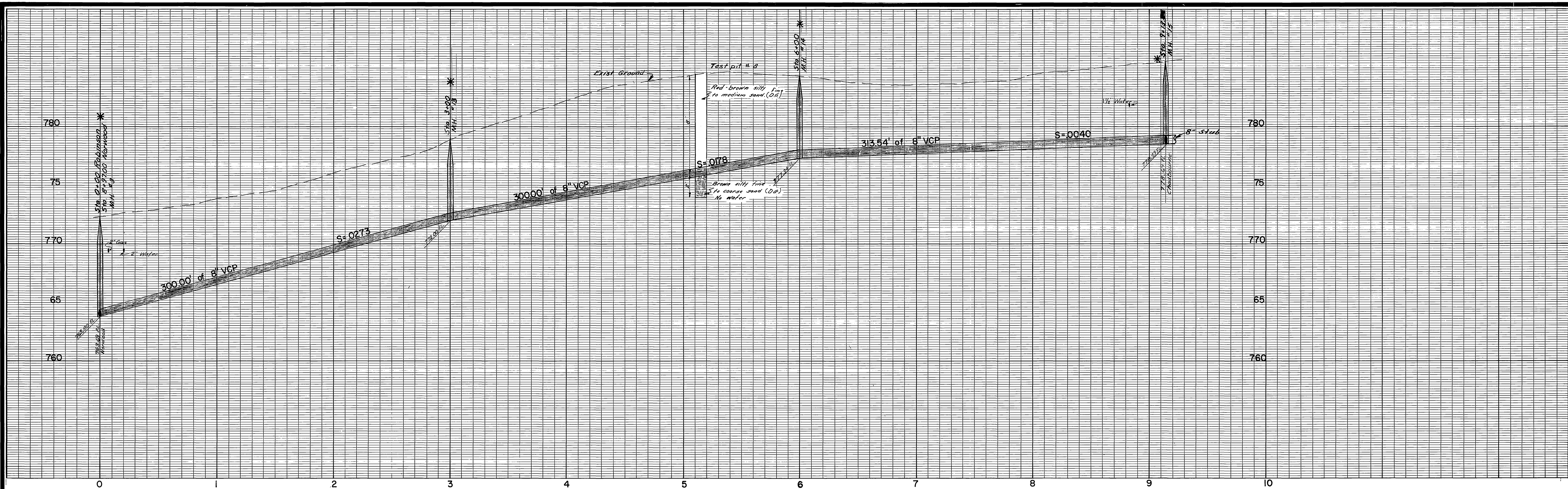
INSTALL TEE
*5-160

INSTALL TEE
*6-120

*45 BUILT 2-13-70 Norm

BY KARL 2-16-70

APPROVED BY CHIEF PUBLIC UTILITIES ENGINEER WATER DIVISION DATE 3/26/69	DESIGNED BY DRAWN BY CHECKED BY	CITY OF RIVERSIDE, CALIFORNIA PUBLIC WORKS DEPARTMENT		BELVEDERE HEIGHTS ASSESSMENT DISTRICT		ACCOUNT NO 810 DRAWING NUMBER
		APPROVED BY DIRECTOR OF PUBLIC WORKS DATE 6-5-69		BLAINE STREET		S-721 SHEET 5 OF 5
REVISIONS DATE 3/26/69		ASSISTANT CITY ENGR. DATE 6-5-69		HORIZ. SCALE: 1" = 40' VERT. SCALE: 1" = 4'		



BM 5, 786.61, RR spike in Pole 27746J on SE cor. Robinson & Chadbourne, 659/69
 BM 6, 773.13, RR spike in Pole 28250J on west side Norwood, 400 Sly Robinson 704/53,64

CHADBOURNE
 BLOCK 6

SEE SHEET 3



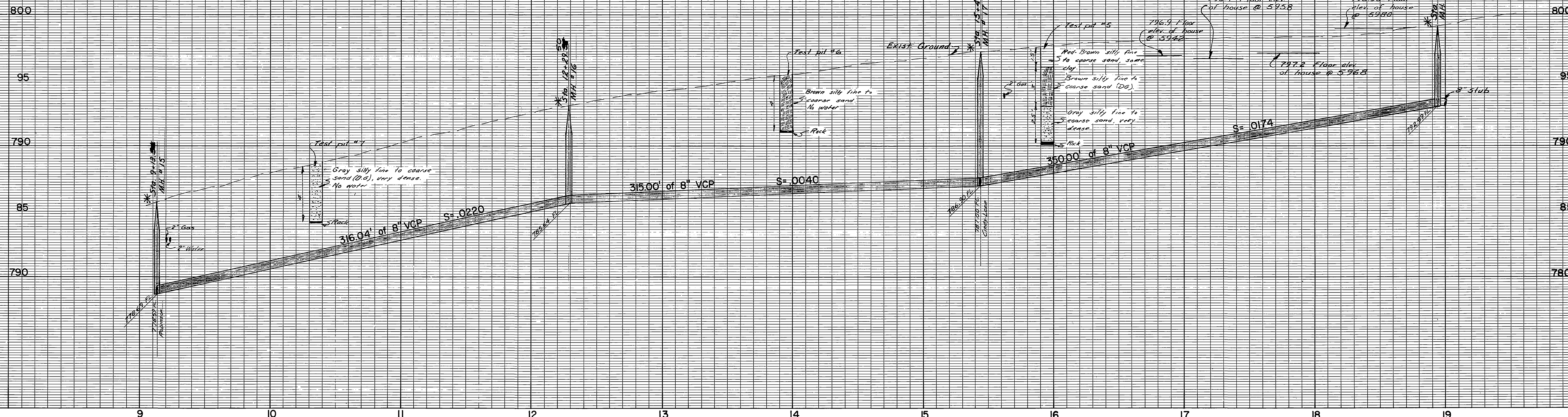
SEE SHEET 2

BLOCK 9
 HEIGHTS

FOR CHADBOURNE
 SEE SHEET 7

- * AS BUILT J.P.G. 6/24/70 DCH
- * STA. 0+00 TO 3+00 EXISTING 3" ASPHALT ROAD MIX.
- * STA. 3+00 TO 6+00 EXISTING 1 1/2" ASPHALT RD. MIX.
- * STA. 6+00 TO 9+13 EXISTING 1" ASPHALT RD. MIX.

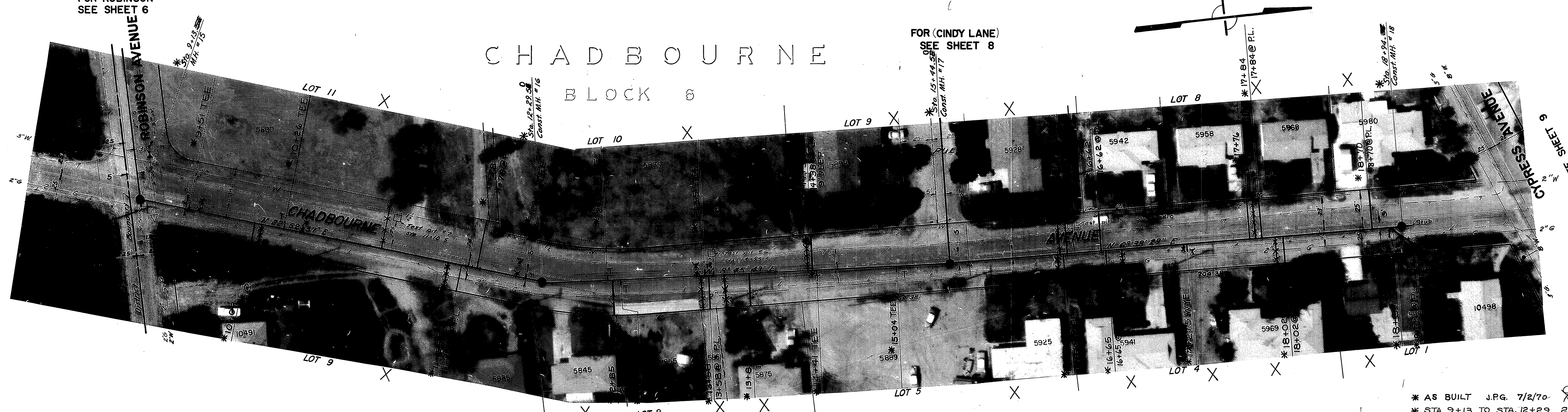
CITY OF RIVERSIDE, CALIFORNIA DEPARTMENT OF PUBLIC WORKS		NORWOOD - CYPRESS ASSESSMENT DISTRICT	ACCOUNT NO. 6079
APPROVED BY SENIOR ENGINEER <i>[Signature]</i>	BY DATE 1/13/69	APPROVED BY DIRECTOR OF PUBLIC WORKS <i>[Signature]</i>	S-720
MARK	REVISIONS	APPR. DATE	SHEET 6 OF 10
DESIGNED BY <i>[Signature]</i> DRAWN BY <i>[Signature]</i> CHECKED BY <i>[Signature]</i>		DATE 1-13-69	S.S. PROJECT NO.
		HORIZ. SCALE: 1" = 40'	VERT. SCALE: 1" = 4'



BM 5, 786.61, RR spike in Pole 27746 J on SE cor. Robinson & Chadbourne FB 659/69

FOR ROBINSON SEE SHEET 6

FOR (CINDY LANE) SEE SHEET 8



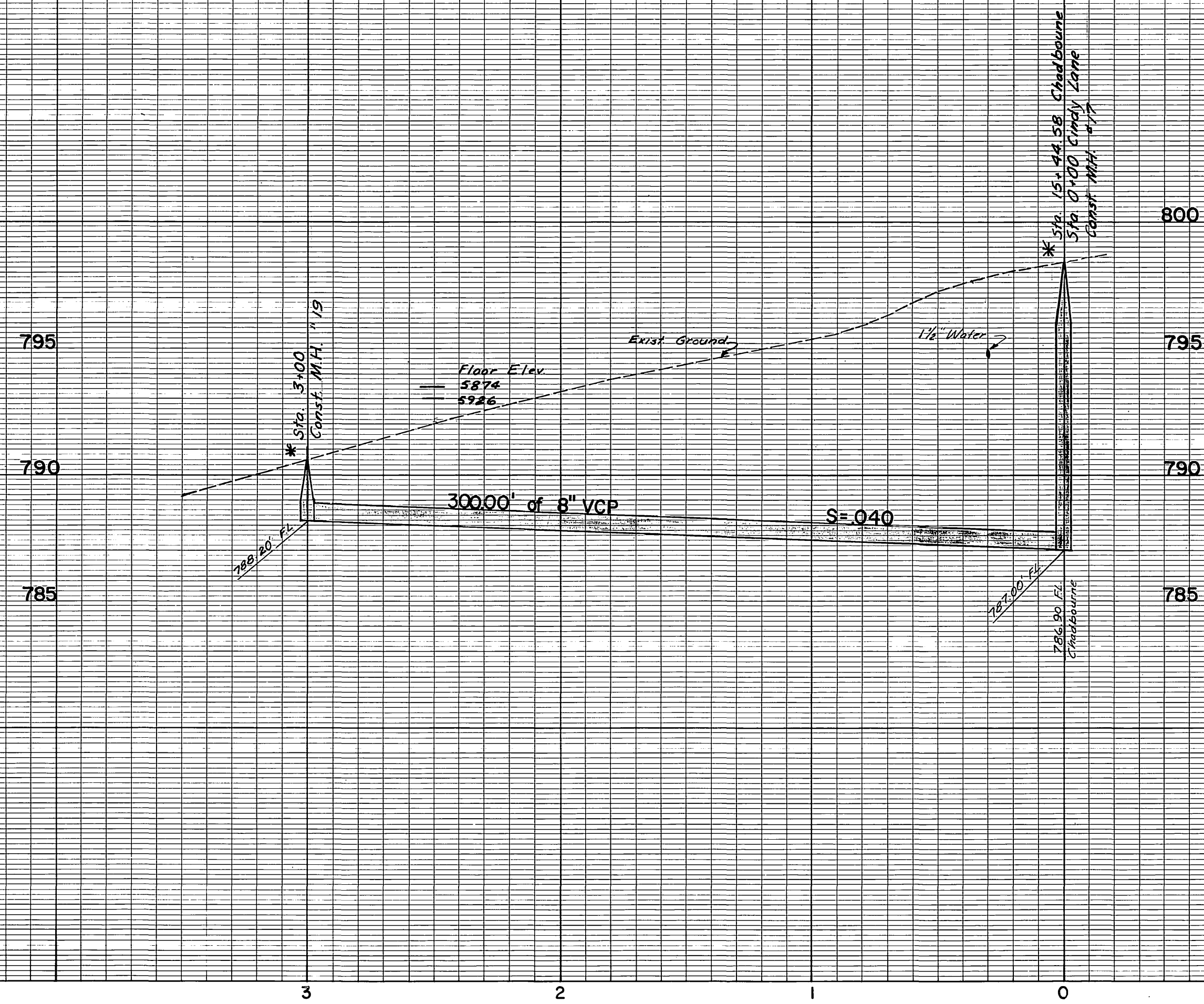
CHADBOURNE

BLOCK 6

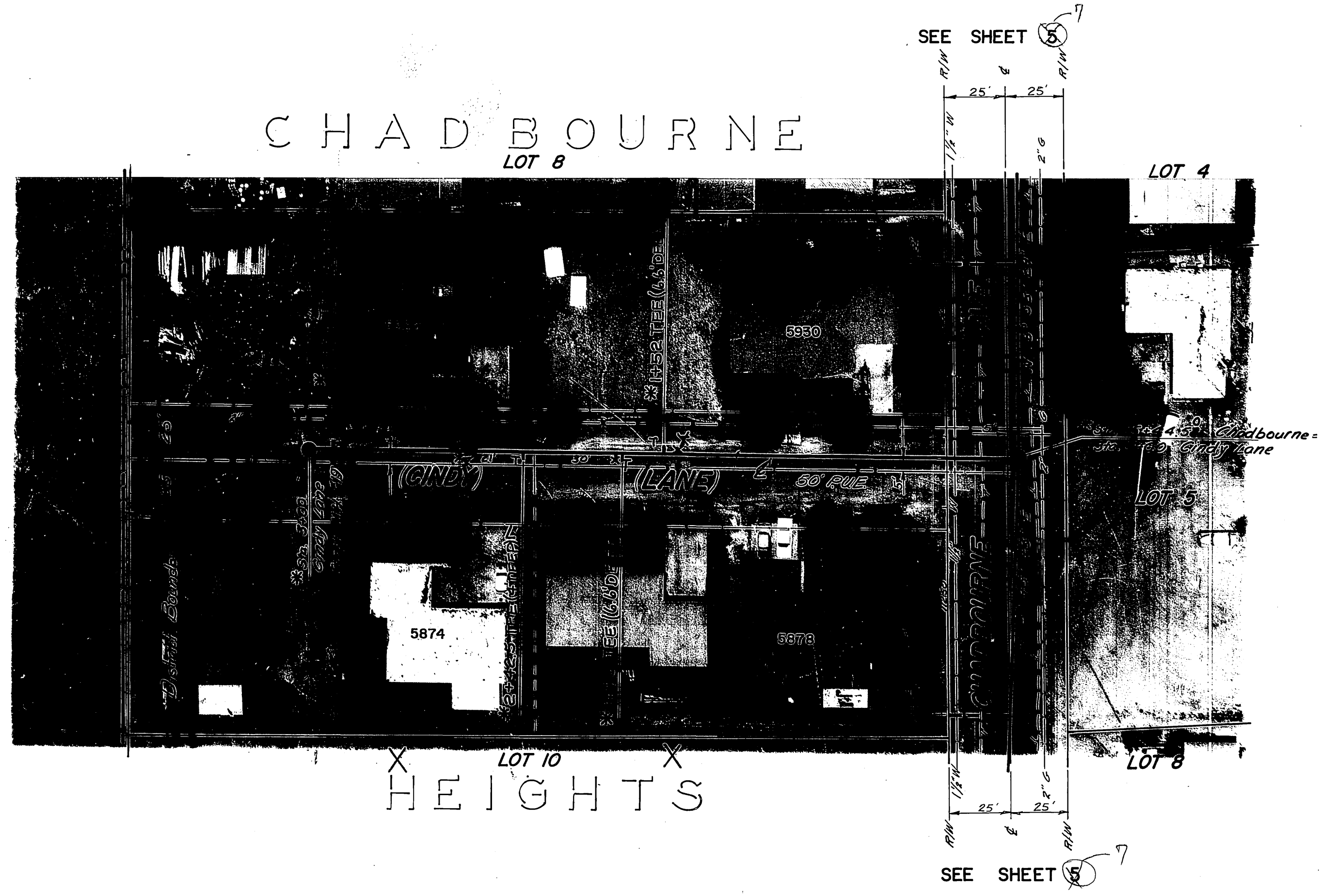
BLOCK 5 HEIGHTS

- * AS BUILT J.P.G. 7/2/70
- * STA. 9+13 TO STA. 12+29 2" ASPHALT ROAD MIX, EXISTING
- * STA. 12+29 TO STA. 18+94 1" ASPHALT ROAD MIX, EXISTING

CITY OF RIVERSIDE, CALIFORNIA DEPARTMENT OF PUBLIC WORKS		NORWOOD-CYPRESS ASSESSMENT DISTRICT		ACCOUNT NO. 6079
APPROVED BY	BY DATE	APPROVED BY	DATE	S-720
SENIOR ENGINEER	1/13/70	<i>[Signature]</i>	1-13-69	SHEET 7 OF 10
MARK DEPARTMENT	TRAFFIC DIVISION	DIRECTOR OF PUBLIC WORKS		S.S. PROJECT NO.
DESIGNED BY <i>[Signature]</i>	REVISIONS	APPR. DATE	CHECKED BY <i>[Signature]</i>	
HORIZ. SCALE: 1" = 40'		VERT. SCALE: 1" = 4'		

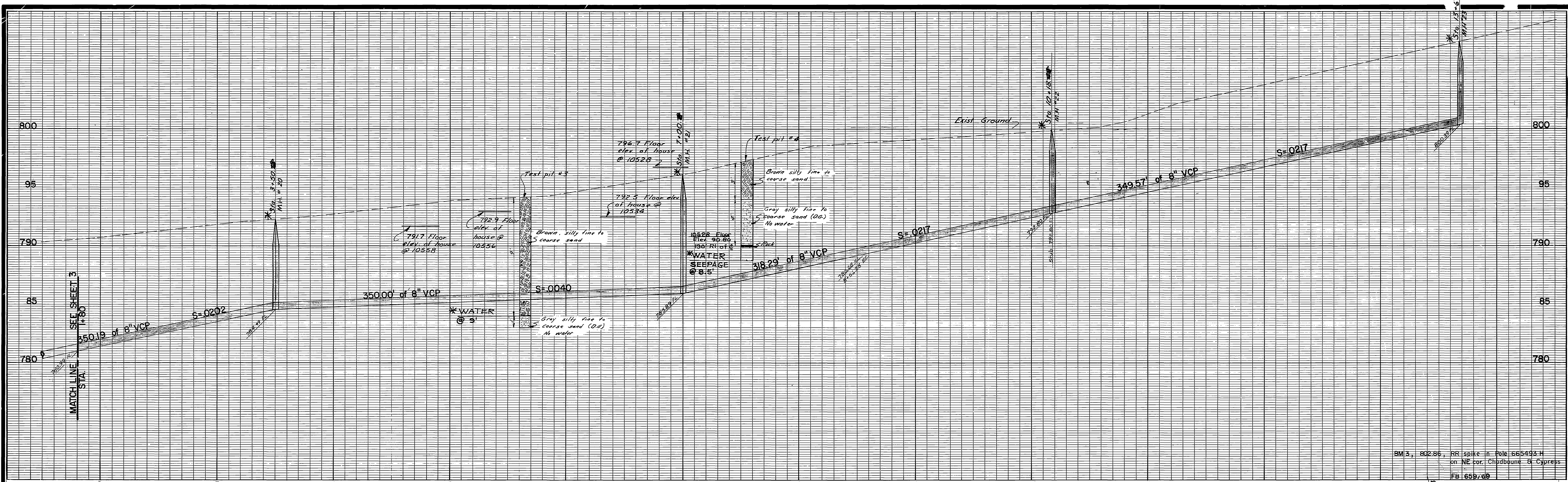


BM 3, 802.86, RR spike in Pole 665443 H on NE cor. Chadbourne & Cypress, FB 659/69



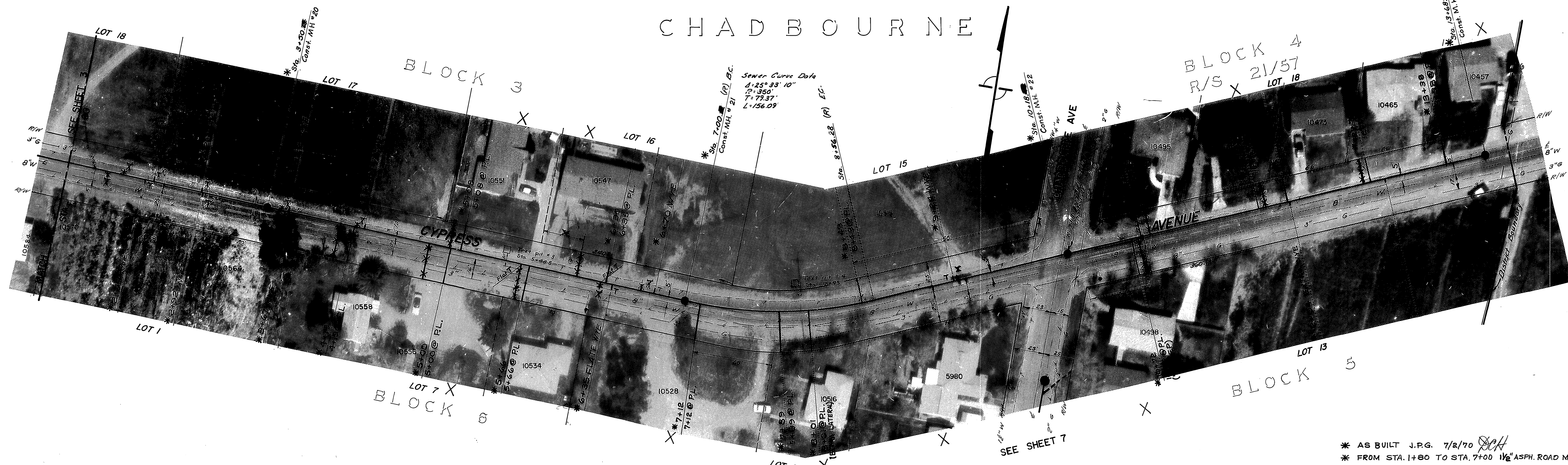
* AS BUILT J.P.G. 7/2/70 DCH

CITY OF RIVERSIDE, CALIFORNIA DEPARTMENT OF PUBLIC WORKS				NORWOOD - CYPRESS ASSESSMENT DISTRICT		ACCOUNT NO. 6079
APPROVED BY	BY	DATE	APPROVED BY	CINDY LANE		S-720
SENIOR ENGINEER	<i>[Signature]</i>	12/70	DIRECTOR OF PUBLIC WORKS	SHEET 8 OF 10		
MARK DEPARTMENT			DATE	HORIZ. SCALE: 1" = 40'		S.S. PROJECT NO.
TRAFFIC DIVISION			1-13-69	VERT. SCALE: 1" = 4'		
ASSISTANT CITY ENG.						
DESIGNED BY <i>[Signature]</i>	DRAWN BY <i>[Signature]</i>	CHECKED BY <i>[Signature]</i>				



BM 3, 802.86, RR spike in Pole 665493.H
on NE cor. Chadbourne & Cypress
FB 1659/88

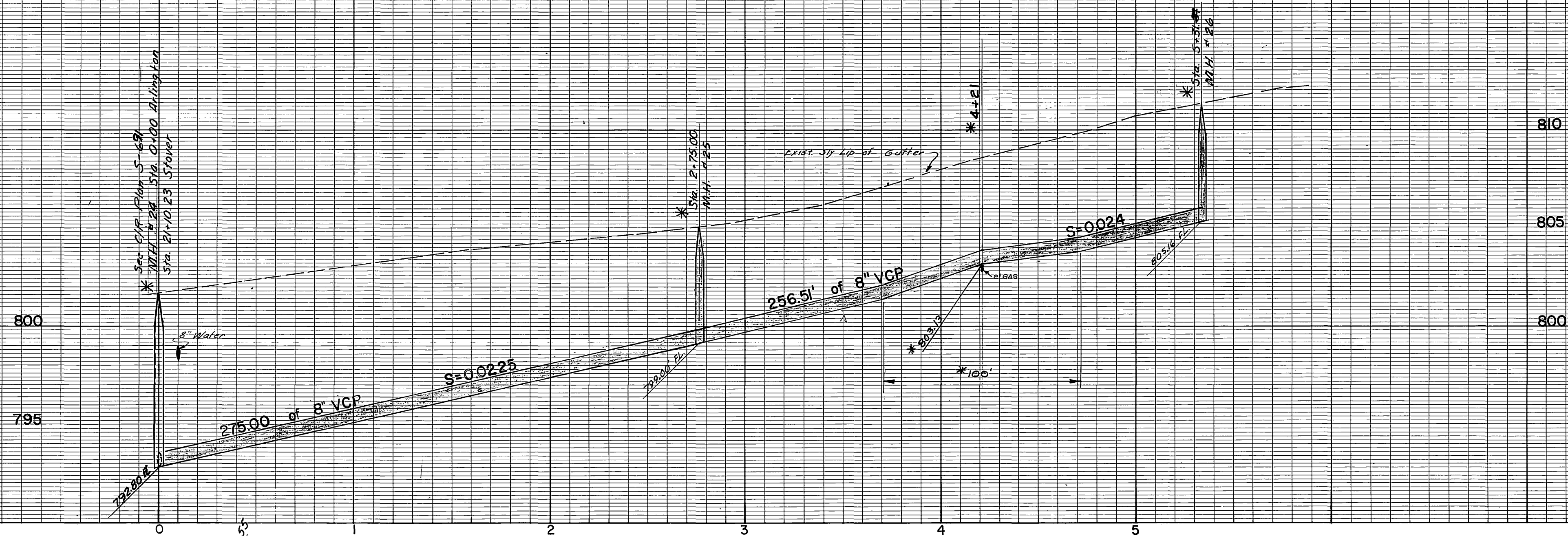
CHADBOURNE



HEIGHTS

* AS BUILT J.P.G. 7/2/70 *DC*
* FROM STA. 1+80 TO STA. 7+00 1 1/2" ASPH. ROAD MIX, EXISTING.
* FROM STA. 7+00 TO STA. 13+68 2" ASPH. ROAD MIX, EXISTING.

CITY OF RIVERSIDE, CALIFORNIA DEPARTMENT OF PUBLIC WORKS		NORWOOD-CYPRESS ASSESSMENT DISTRICT		ACCOUNT NO. 6079
APPROVED BY SENIOR ENGINEER <i>[Signature]</i>		APPROVED BY DIRECTOR OF PUBLIC WORKS <i>[Signature]</i>		S:720
TRAFFIC DIVISION ASSISTANT CITY ENG.		DATE 1-13-69		SHEET 9 OF 10
DESIGNED BY <i>[Signature]</i> DRAWN BY <i>[Signature]</i> CHECKED BY <i>[Signature]</i>		HORIZ. SCALE: 1" = 40'		VERT. SCALE: 1" = 4'
				S.S. PROJECT NO.



BM, 812.65, PK nail in NE cb return Norwood & Arlington FB 704/37



CHADBOURNE HEIGHTS

FOR ARLINGTON SEE SHEET 5

FOR NORWOOD SEE SHEET 4

* ASBUILT J.R.G. 7/2/70
* LATERALS MARKED ON C.F.

* Extend laterals to back of curb (6')

CITY OF RIVERSIDE, CALIFORNIA DEPARTMENT OF PUBLIC WORKS				NORWOOD-CYPRESS ASSESSMENT DISTRICT		ACCOUNT NO. 6079
APPROVED BY	BY	DATE	APPROVED BY	S-720		SHEET 10 OF 10
SENIOR ENGINEER	JRG	12/10	DIRECTOR OF PUBLIC WORKS			
MARK	REVISIONS	APPR. DATE	TRAFFIC DIVISION	ARLINGTON AVE.		S.S. PROJECT NO.
DESIGNED BY	LODGE	1-13-69	ASSISTANT CITY ENG.	HORIZ. SCALE: 1" = 40'		
CHECKED BY			DATE		VERT. SCALE: 1" = 4'	