

RIVERSIDE



CALIFORNIA

DEPARTMENT OF PUBLIC WORKS

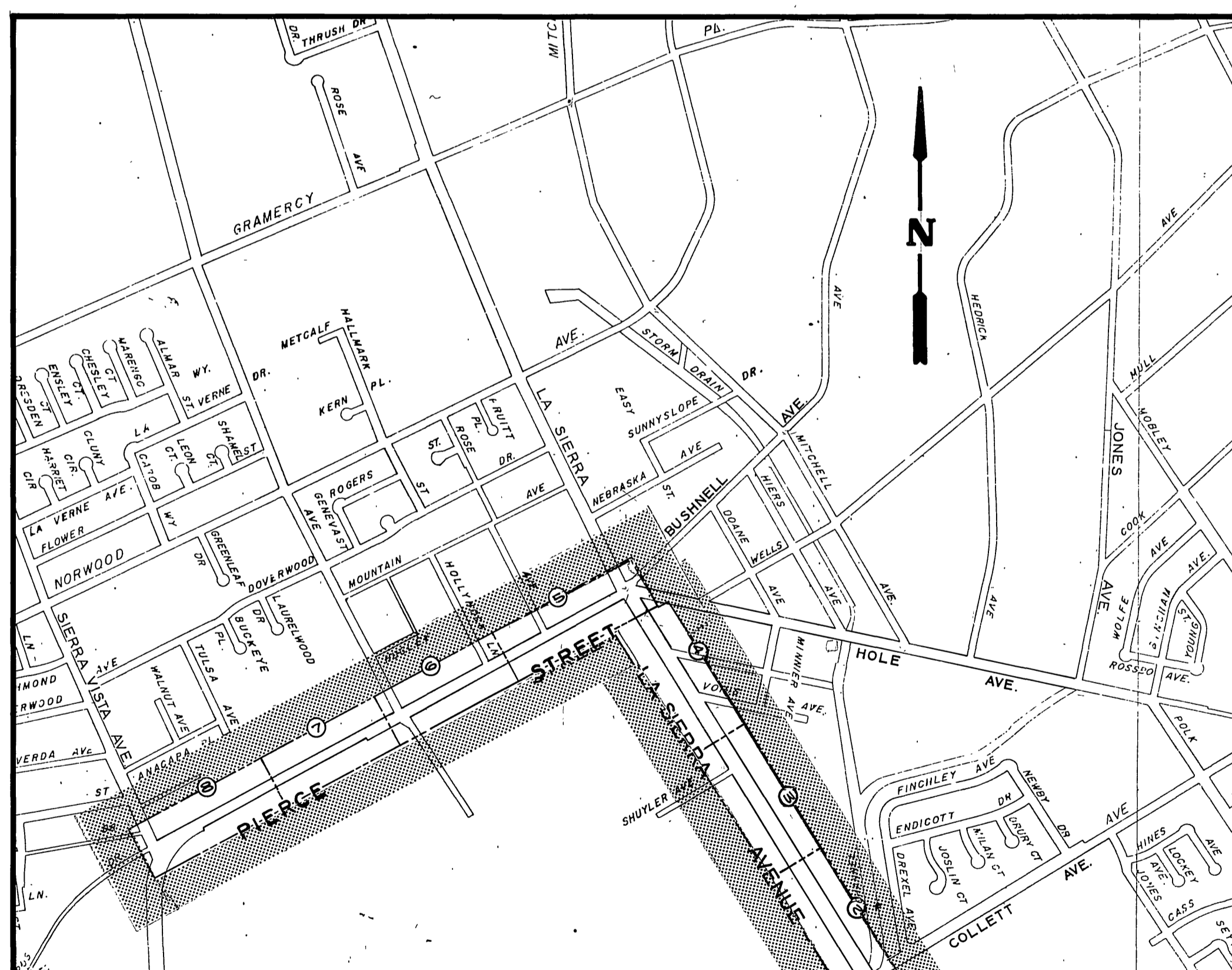
PIERCE - LA SIERRA TRUNK SEWER

COLLETT TO SIERRA VISTA
LENGTH OF PROJECT = 6900 Feet = 1.31 Mile

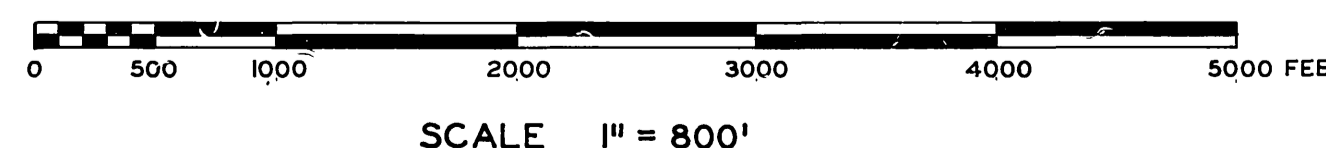
CENTER LINE ————
RIGHT-OF-WAY LINE ————
SUBDIVISION LOT LINE ————

CONSTRUCTION NOTES

1. CONSTRUCT MANHOLE PER STD. 500 AS INDICATED BY: STATIONS SHOWN ARE ±1'. MANHOLE NUMBER (M) SHALL BE CONSTRUCTED PER STD. 503.
2. PIPE SHALL BE VCP, INSTALLED PER STD. 452, CASE I, AND TYPICAL SECTION ON THIS SHEET.
3. ONLY SEWER LATERALS IN CONFLICT WITH NEW TRUNK SHALL BE CONNECTED TO IT PER STD. DWG. 562.
4. CONTRACTOR TO CONTACT SOUTHWEST WATER CO. 48 HOURS PRIOR TO TRENCHING NEAR WATER LINES. TELEPHONE: 1-213-336-1231
5. CONTRACTOR TO RESTORE TO ORIGINAL CONDITION ANY DRAINAGE DITCHES, CURBS, CROSS GUTTERS, CULVERTS OR OTHER IMPROVEMENTS DAMAGED BY CONSTRUCTION.
6. WHERE THE PROPOSED SEWER CROSSES A WATER MAIN THE CONTRACTOR SHALL ENGAGE THE SEWER OR THE WATER MAIN PER SECTION 306-2.12, CONCRETE BEDDING AT WATER MAIN CROSSINGS, OF THE SPECIAL PROVISIONS.
7. INSTALL CHIMNEYS PER STD. 561 AT LOCATIONS INDICATED BY (C) ON THE PLAN. THE UPPER END OF THE CHIMNEY IS TO BE 6' BELOW FINISH SURFACE GRADE. 6" CAST IRON PIPE MAY BE SUBSTITUTED FOR THE ENCASED 6" VCP.
8. SOIL BORINGS POSTED ON THE PLAN WHERE TAKEN ON JUNE 26, 1970.
9. ? INDICATES EXACT DEPTH OF UTILITY IS UNKNOWN BUT IS ANTICIPATED TO CLEAR PROPOSED SEWER



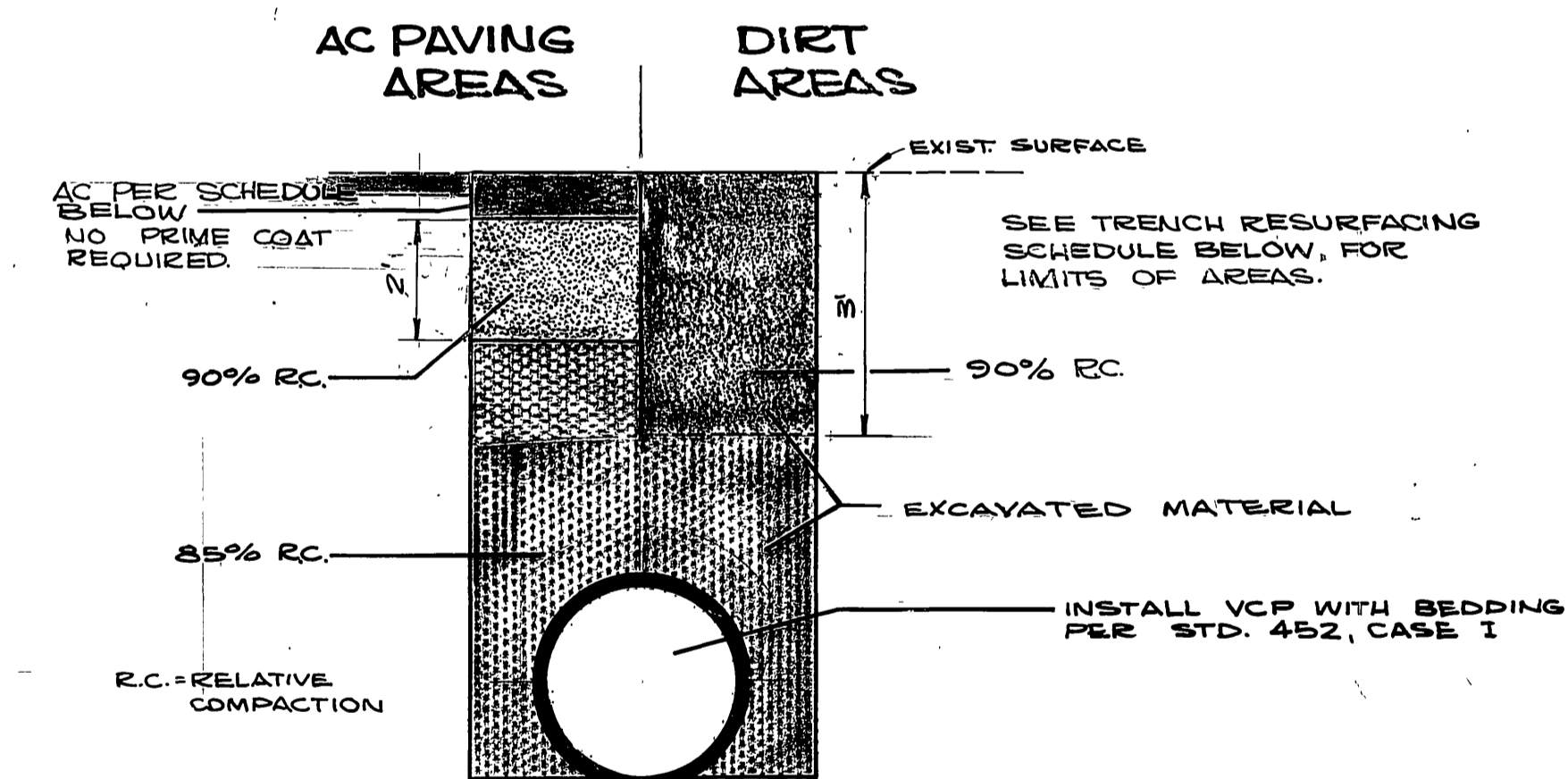
PROJECT LOCATION MAP



UNDERGROUND LEGEND

EXISTING UNDERGROUND UTILITIES

SANITARY SEWER	8" VCP - S	TELEPHONE CONDUIT	T - T
WATER LINE	8" CI - W	ELECTRICAL CONDUIT	E - E
STORM DRAIN	24" RCP - SD	STREET LIGHTING	SL - SL
CULVERT	15" CONC - C	TRAFFIC SIGNAL	SIG - SIG
IRRIGATION LINE	20" IRR - IRR	FIRE ALARM	F - F
GAS LINE	3" M - G	ABANDONED UTILITY	---

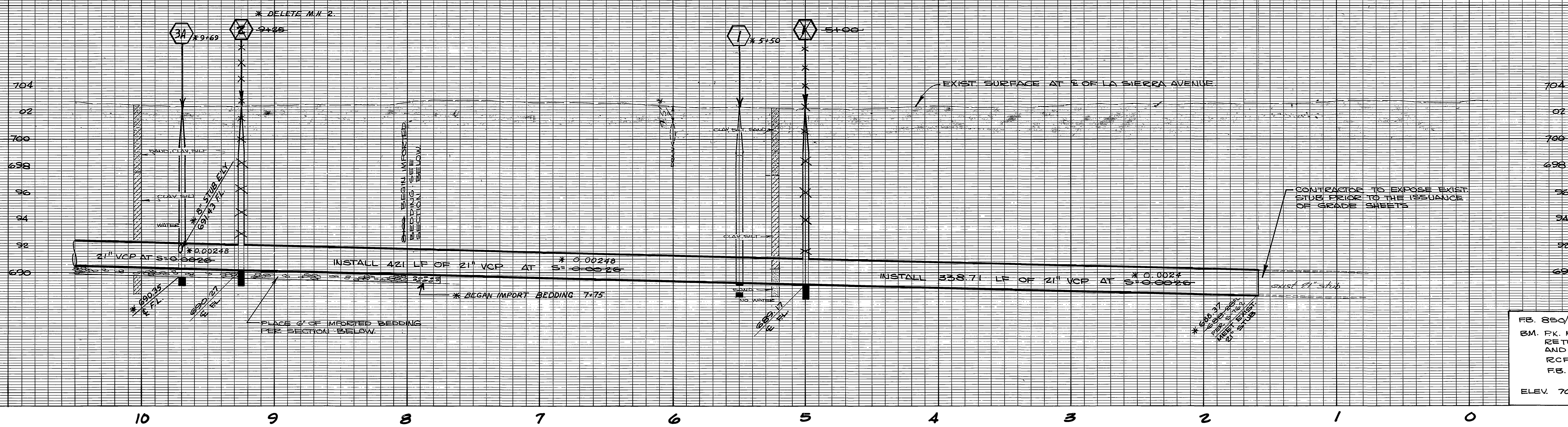


STATION	MATERIAL
BEGINNING TO 13+00	DIRT
13+00 TO 19+00	0.60 AC
19+00 TO 30+00	DIRT (EXCEPT 27+60 TO 28+00)
27+60 TO 28+00	0.33 AC
30+00 TO 31+50	0.33 AC
31+50 TO 54+00	0.60 AC
54+00 TO ENDING	0.80 AC

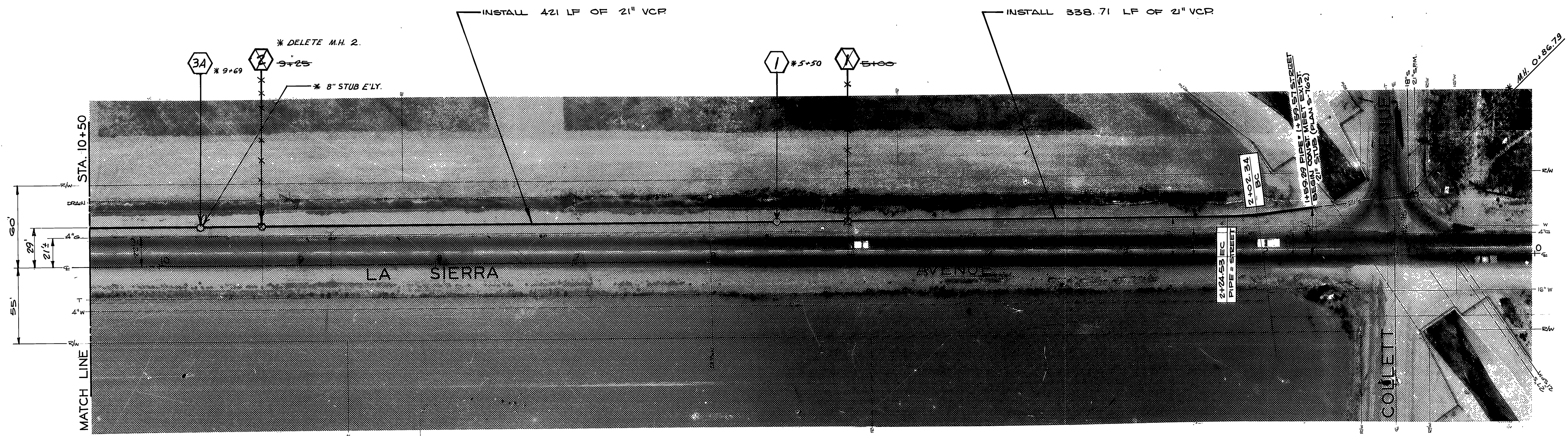
* AS BUILT 9-27-71 BDM

TRENCH RESURFACING SCHEDULE

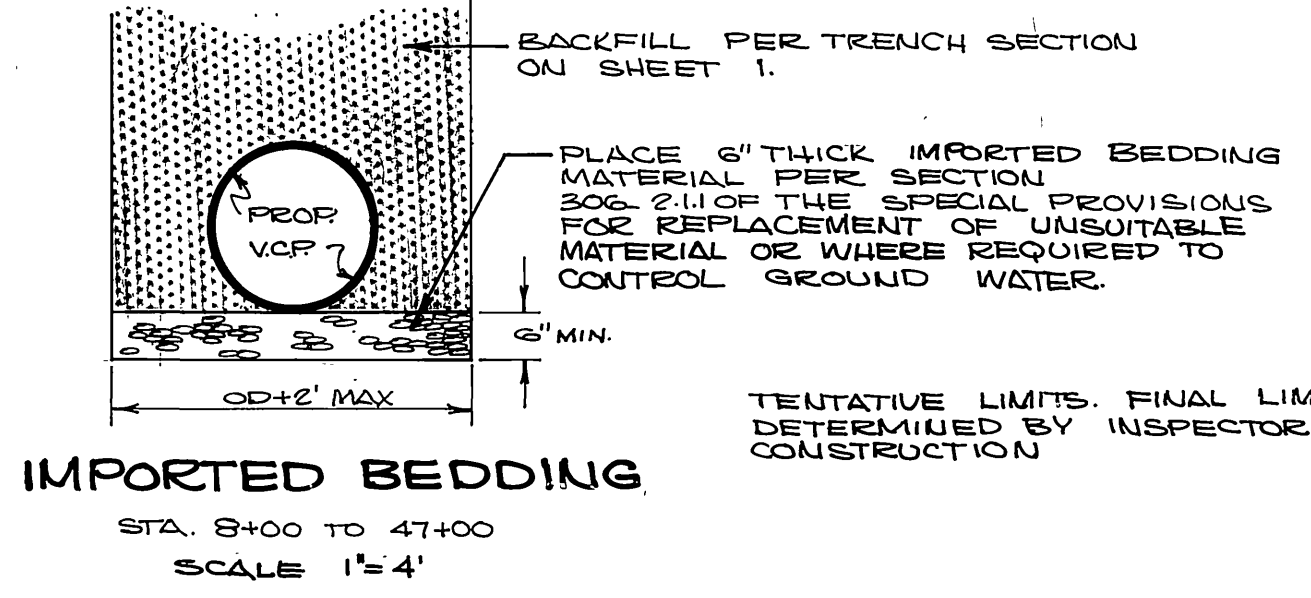
PIERCE - LA SIERRA TRUNK SEWER COLLETT TO SIERRA VISTA		APPROVED BY: <i>[Signature]</i> OFFICE ENGINEER PARK DEPARTMENT TRAFFIC DIVISION ASSISTANT CITY ENG.	BY DATE: <i>[Signature]</i> 1/14 APPROVED BY: <i>[Signature]</i> DIRECTOR OF PUBLIC WORKS DATE: 2-22-71	PROJECT NO. 527 S-723 SHEET 1 OF 8 S.S. NO.
--	--	--	--	---



FB. 850/36-43, 866/27-33
 3M. FK. NAIL IN N.E. CURB
 RETURN LA SIERRA
 AND COLLETT AT
 RCFC CHANNEL PER
 FB. 704/22
 ELEV. 701.611



MATCH LINE
 STA. 10+50

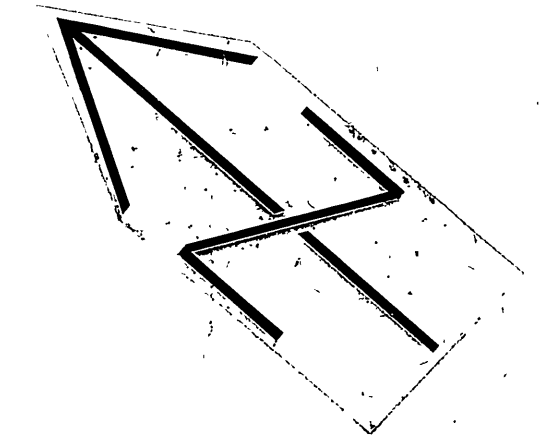


TENTATIVE LIMITS. FINAL LIMITS TO BE DETERMINED BY INSPECTOR DURING CONSTRUCTION.

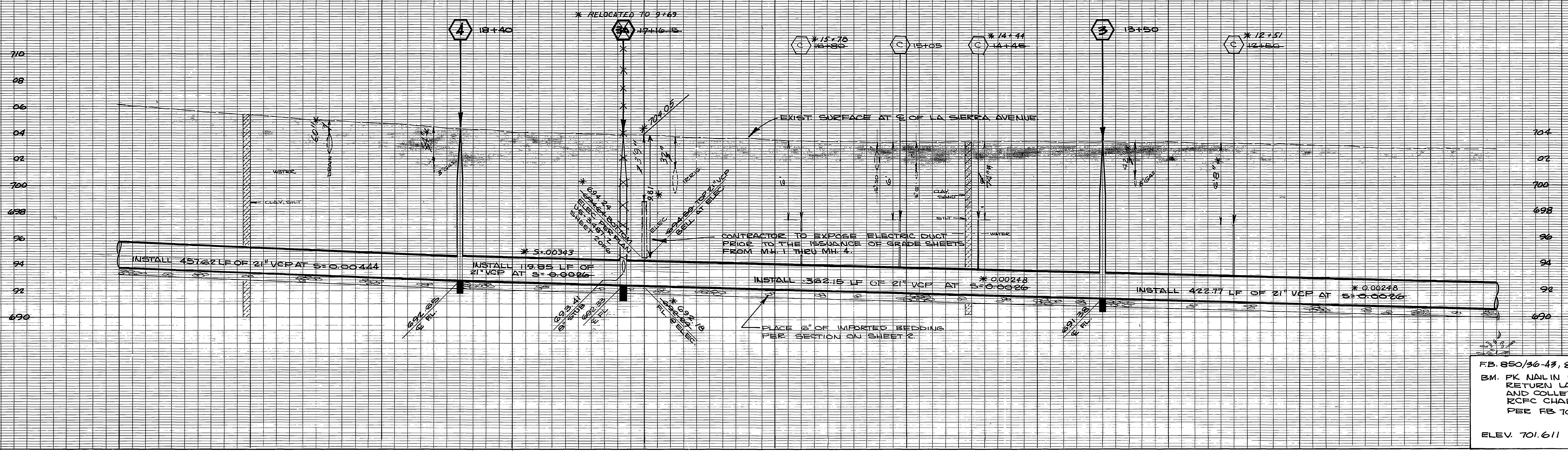
PIPE CURVE DATA

R = 200.00'
 Δ = 6° 21' 23"
 L = 22.19'
 T = 11.10'

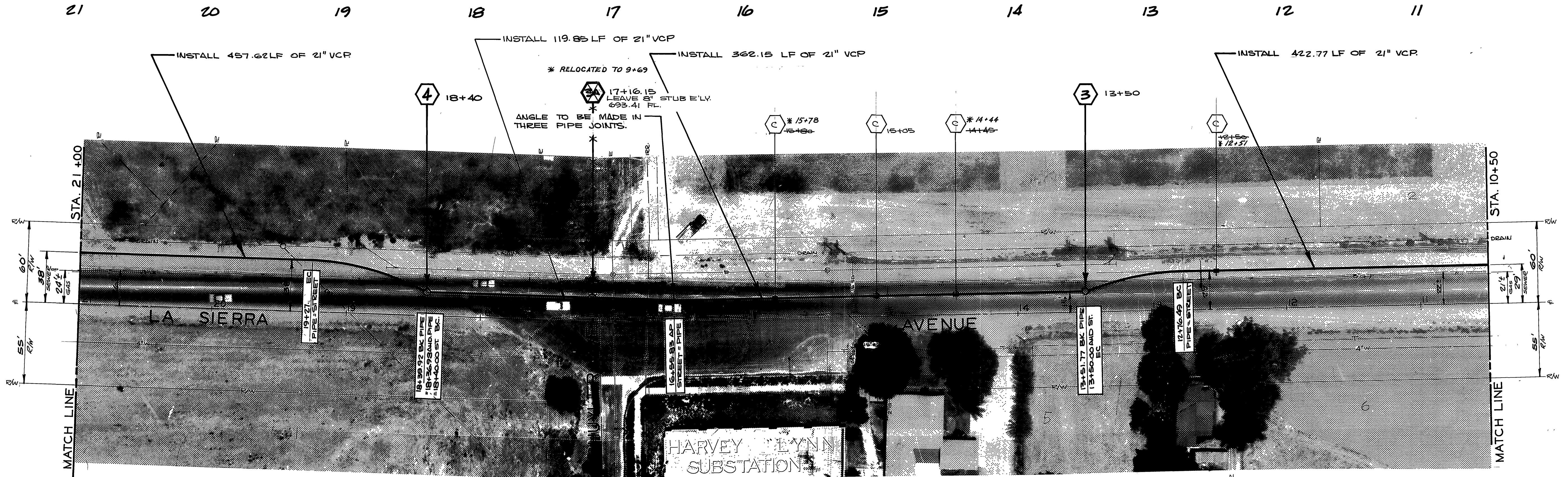
* 45 BUILT 9-3-71 BDM



CITY OF RIVERSIDE, CALIFORNIA PUBLIC WORKS DEPARTMENT				PIERCE - LA SIERRA TRUNK SEWER		ACCOUNT NO. 527 DRAWING NUMBER S-723
APPROVED BY	BY	DATE	APPROVED BY	SHEET 2 OF 8		
PRINCIPAL ENGINEER	144		DIRECTOR OF PUBLIC WORKS			
PARK DEPARTMENT						
TRAFFIC DIVISION						
CHIEF PUB. WKS. ENGR.	2-19		DATE 2-22-71	HORIZ. SCALE: 1" = 40' VERT. SCALE: 1" = 4'		
DESIGNED BY BE	DRAWN BY	CHECKED BY L.L.				



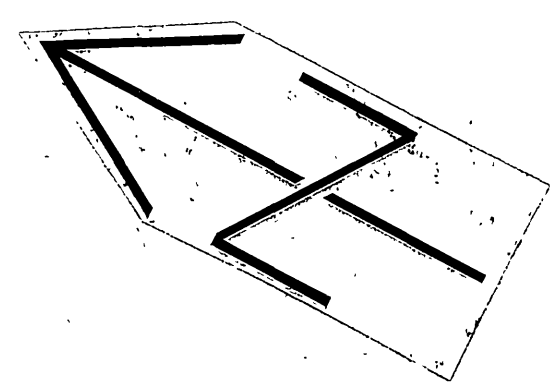
FB. 850/96-43, 866/27-33
 BM. PK NAIL IN NE CORN
 RETURN LA SIERRA
 AND COLLETT AT
 RCFC CHANNEL
 PER FB 704/22
 ELEV. 701.611



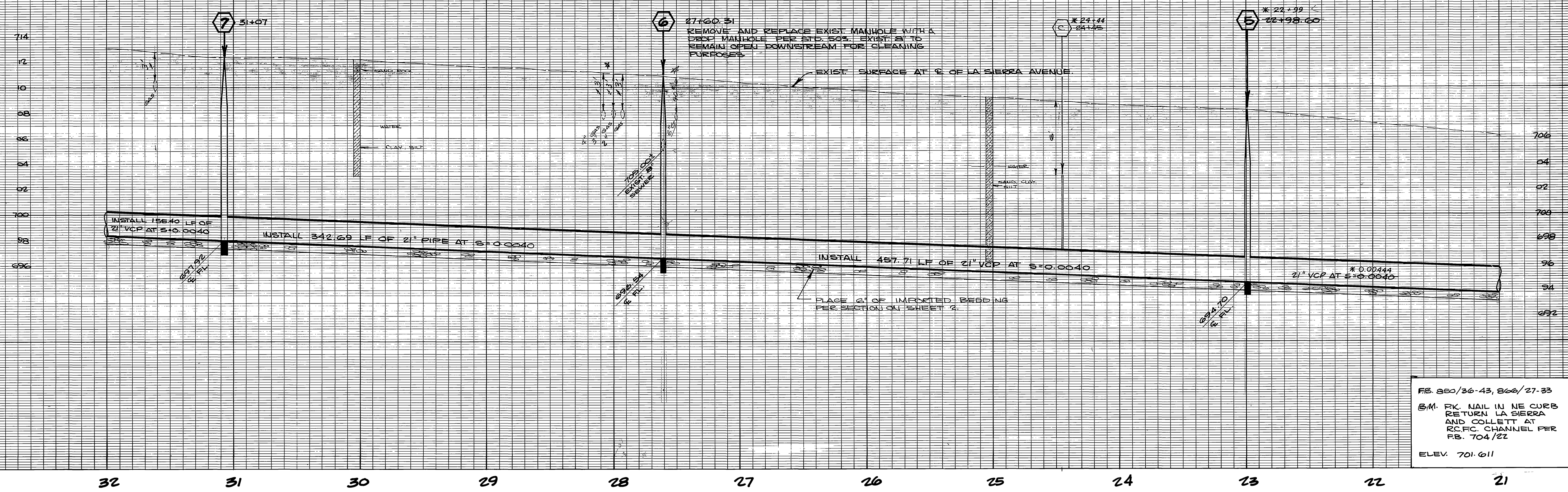
PIPE CURVE DATA
 R = 200.00'
 Δ = 26° 50' 31"
 L = 90.20' 31"
 T = 45.88'

PIPE CURVE DATA
 R = 200.00'
 Δ = 21° 33' 55"
 L = 75.28'
 T = 38.09'

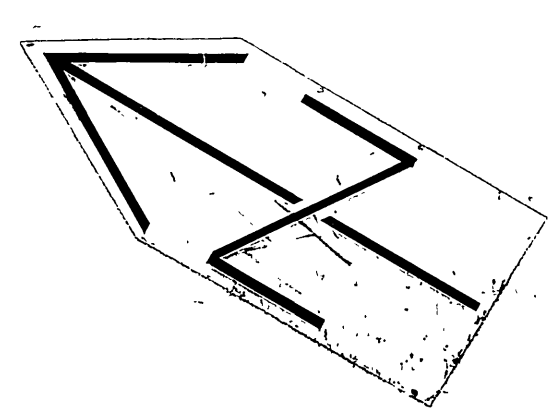
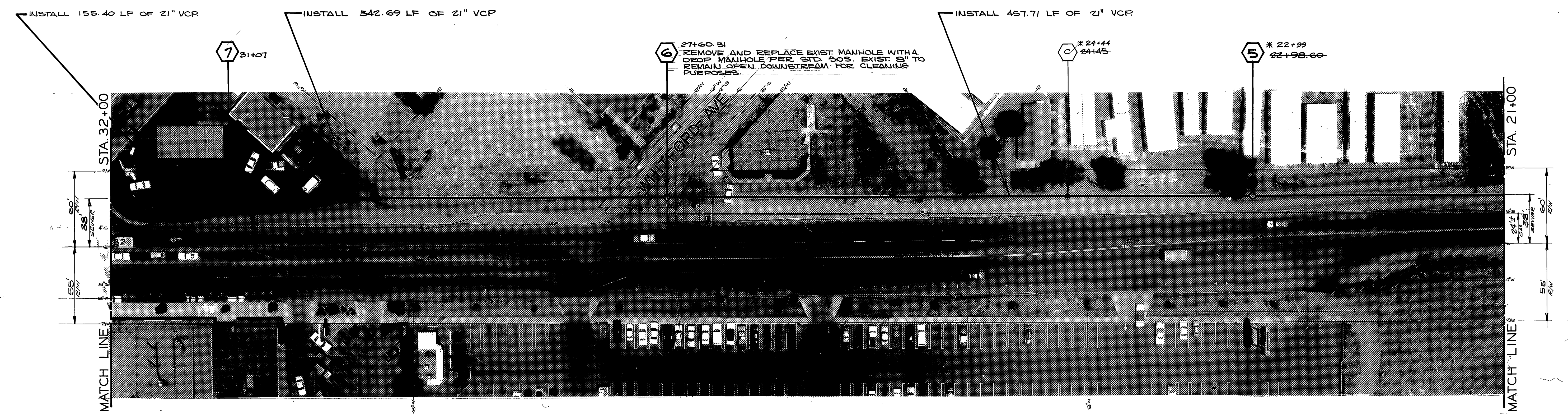
* AS BUILT 9-3-71 BDM



CITY OF RIVERSIDE, CALIFORNIA PUBLIC WORKS DEPARTMENT		PIERCE - LA SIERRA TRUNK SEWER		ACCOUNT NO. 527 DRAWING NUMBER S-723
APPROVED BY PRINCIPAL ENGINEER PARK DEPARTMENT TRAFFIC DIVISION CHIEF PUS. WKS. ENGR.	BY DATE 7/4 2-19	APPROVED BY DIRECTOR OF PUBLIC WORKS	DATE 2-22-71	SHEET 3 OF 8
DESIGNED BY BE DRAWN BY JOR CHECKED BY LL		HORIZ. SCALE: 1" = 40' VERT. SCALE: 1" = 4'		

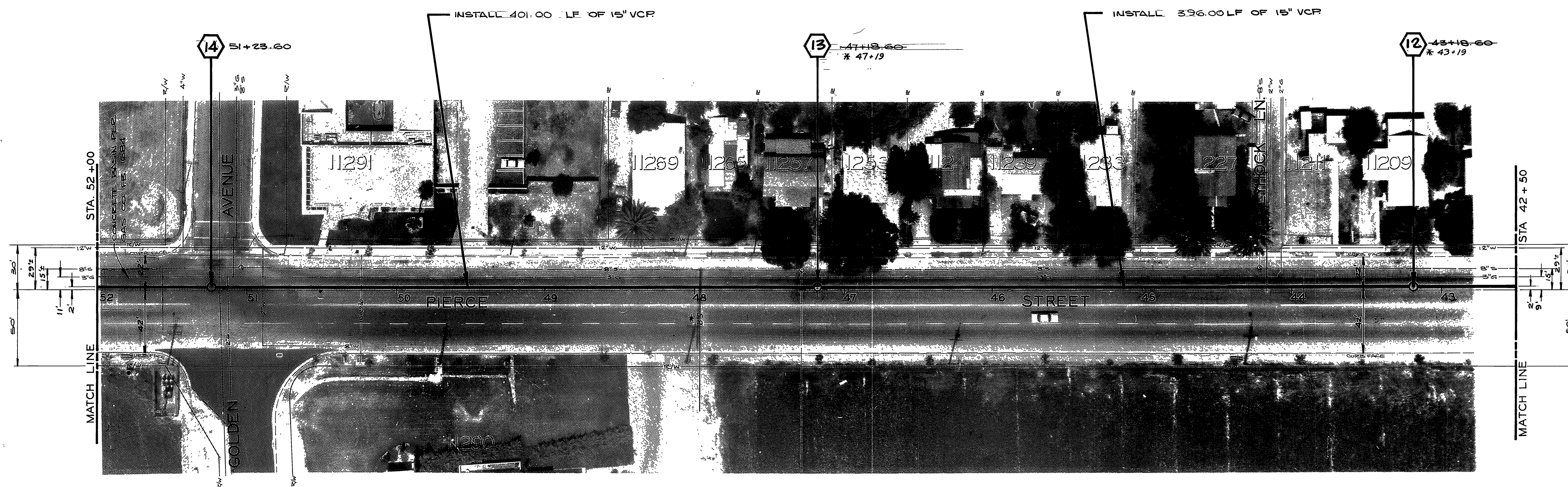
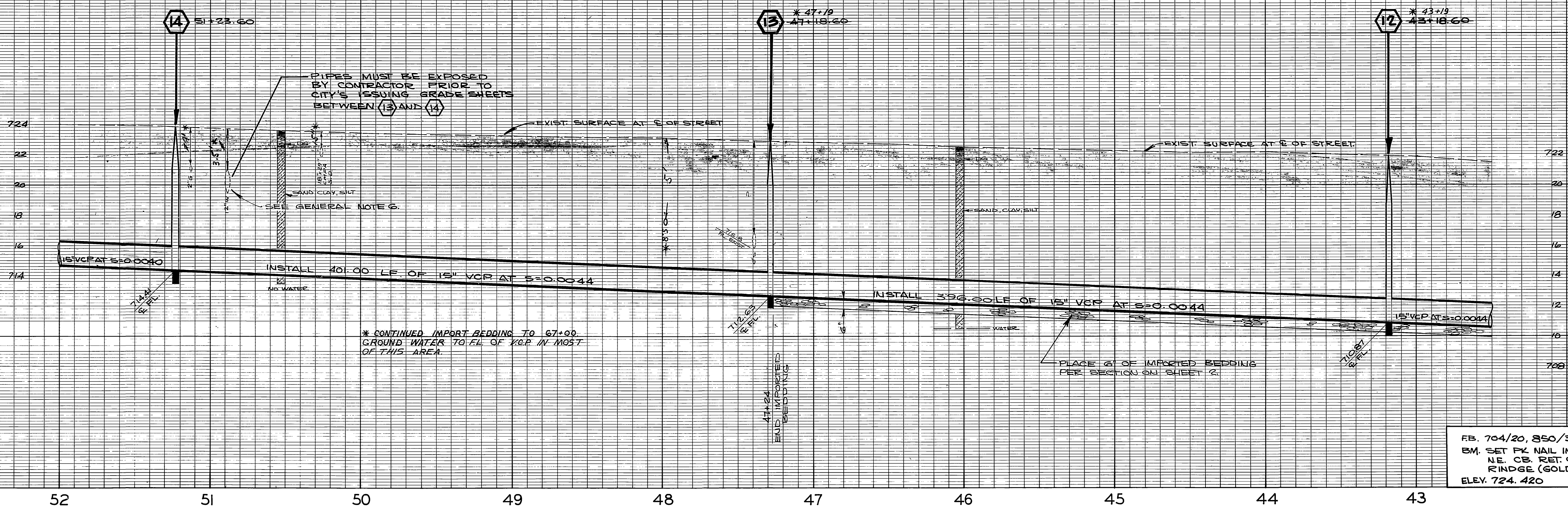


FB. 860/36-43, 866/27-33
 S.M. FK. NAIL IN NE CURB
 RETURN LA SIERRA
 AND COLLETT AT
 R.C.F.C. CHANNEL PER
 FB. 704/22
 ELEV. 701.611



* AS BUILT 9-3-71 BDM

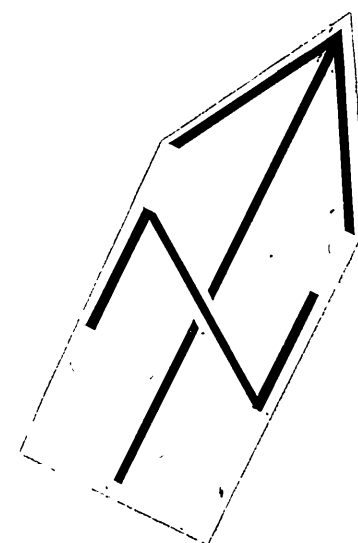
CITY OF RIVERSIDE, CALIFORNIA PUBLIC WORKS DEPARTMENT			PIERCE - LA SIERRA TRUNK SEWER		ACCOUNT NO 527 DRAWING NUMBER S-723
APPROVED BY PRINCIPAL ENGINEER <i>[Signature]</i>	BY DATE 2-19	APPROVED BY DIRECTOR OF PUBLIC WORKS <i>[Signature]</i>	DATE 2-22-71	COLLETT TO SIERRA VISTA SHEET 2 OF 8	
DESIGNED BY RE DRAWN BY FOR CHECKED BY L.L.	REVISIONS APPR. DATE	HORIZ. SCALE: 1" = 40' VERT. SCALE: 1" = 4'			



NOTICE TO CONTRACTOR

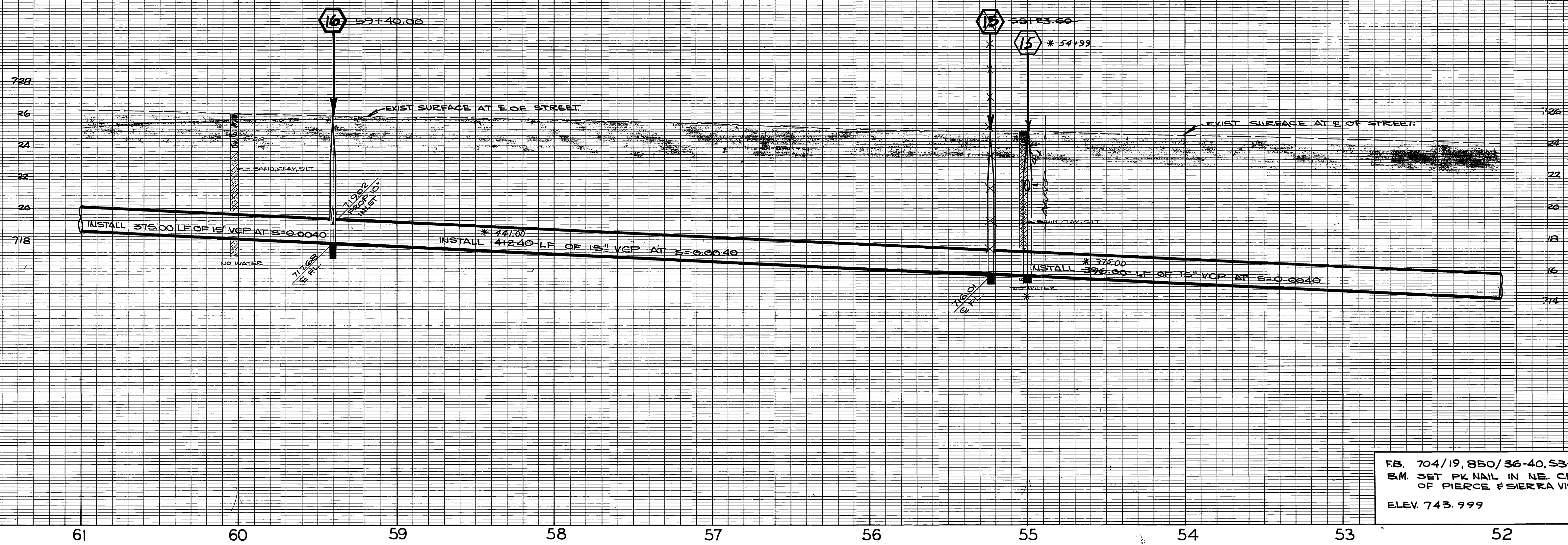
The existence and location of any underground utility pipes or structures shown on these plans are obtained by a search of the available records. To the best of our knowledge, there are no existing utilities except as shown on these plans.

The contractor is required to take due precautionary measures to protect the utility lines shown and any other lines not of record or not shown on these plans.

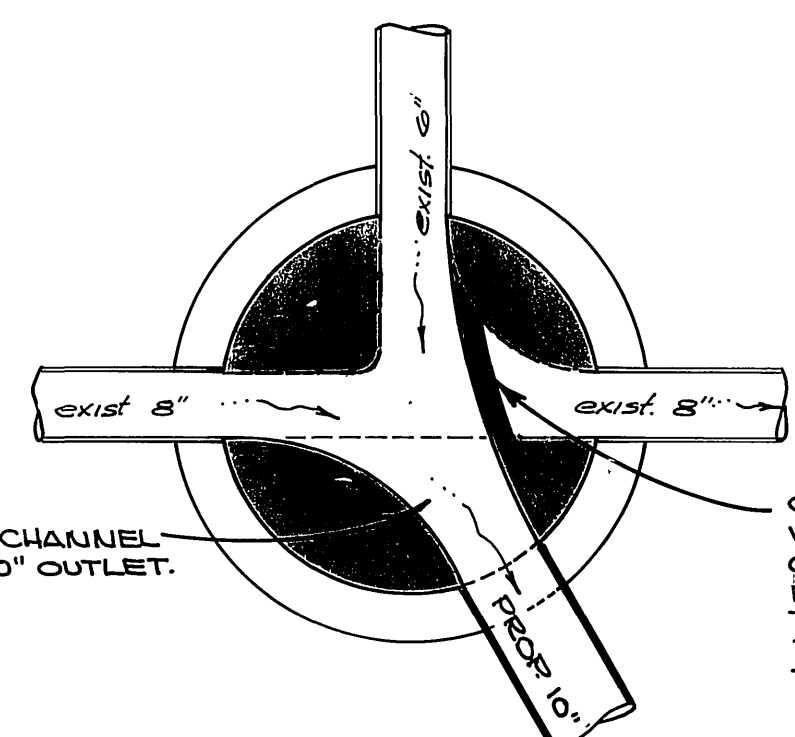
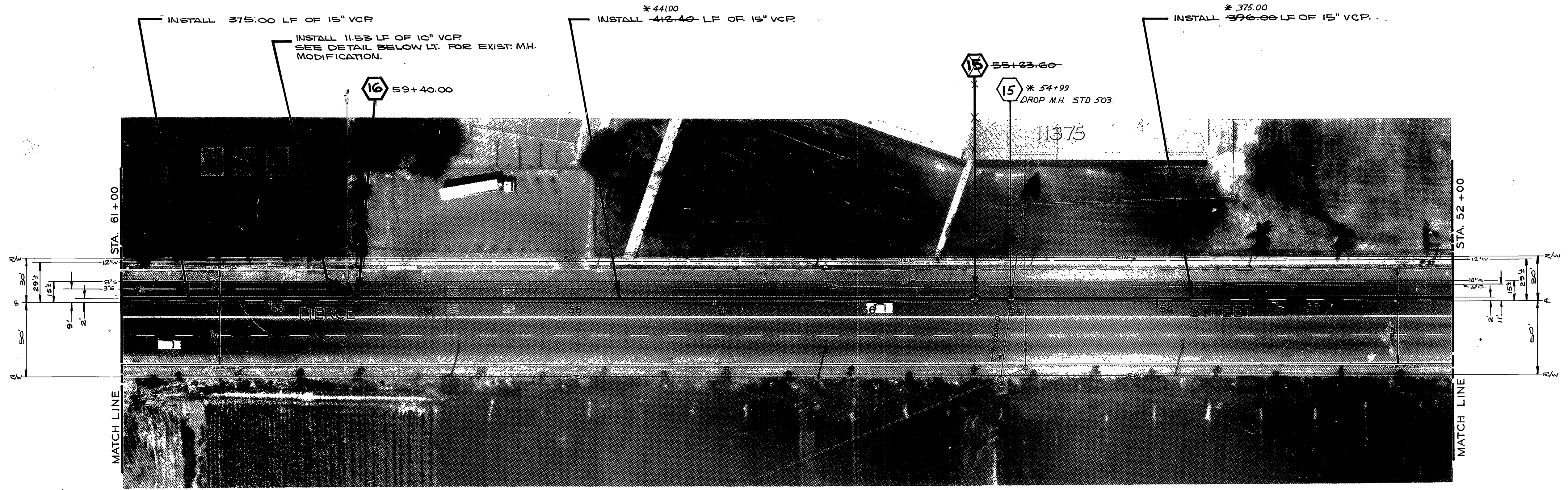


* AS BUILT 9-3-71 BDM/DC

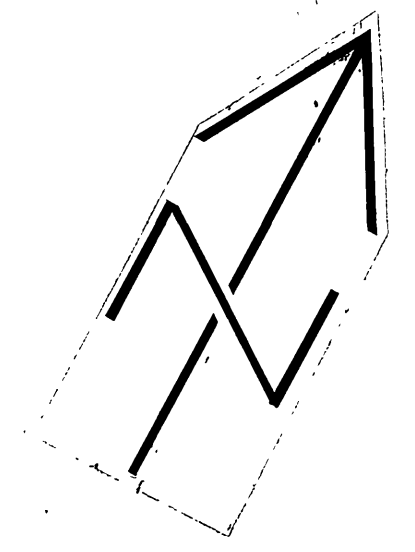
CITY OF RIVERSIDE, CALIFORNIA DEPARTMENT OF PUBLIC WORKS		PIERCE - LA SIERRA TRUNK SEWER		ACCOUNT NO. 527
APPROVED BY: [Signature] SENIOR ENGINEER		APPROVED BY: [Signature] DIRECTOR OF PUBLIC WORKS		S-723 SHEET 6 OF 8
DESIGNED BY: BE DRAWN BY: [Signature] CHECKED BY: [Signature]		DATE: 2-19-74		
HORIZ. SCALE: 1" = 40'		VERT. SCALE: 1" = 4'		S.S. PROJECT NO.



FB. 704/19, 850/36-40, 53-60
 B.M. SET PK NAIL IN NE. CB.
 OF PIERCE #SIERRA VISTA
 ELEV. 743.999

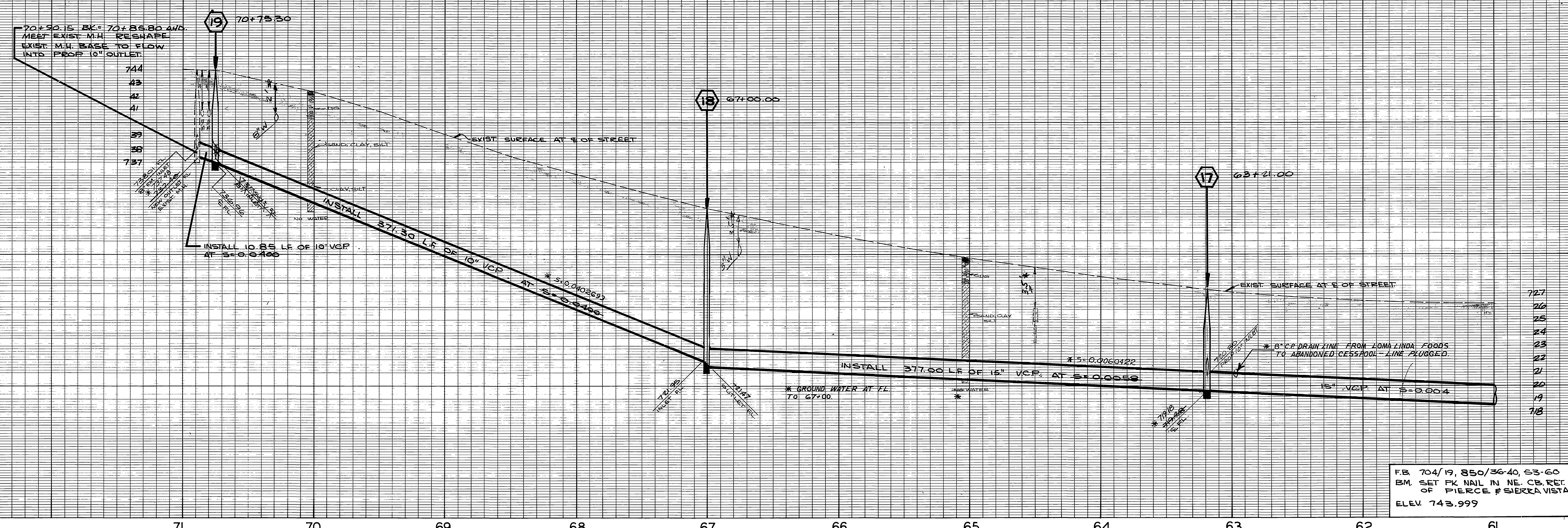


MANHOLE BOTTOM DETAIL
 STA 59+48±.13± RT.
 STA 63+09±.13± RT.
 SCALE 1"=2'

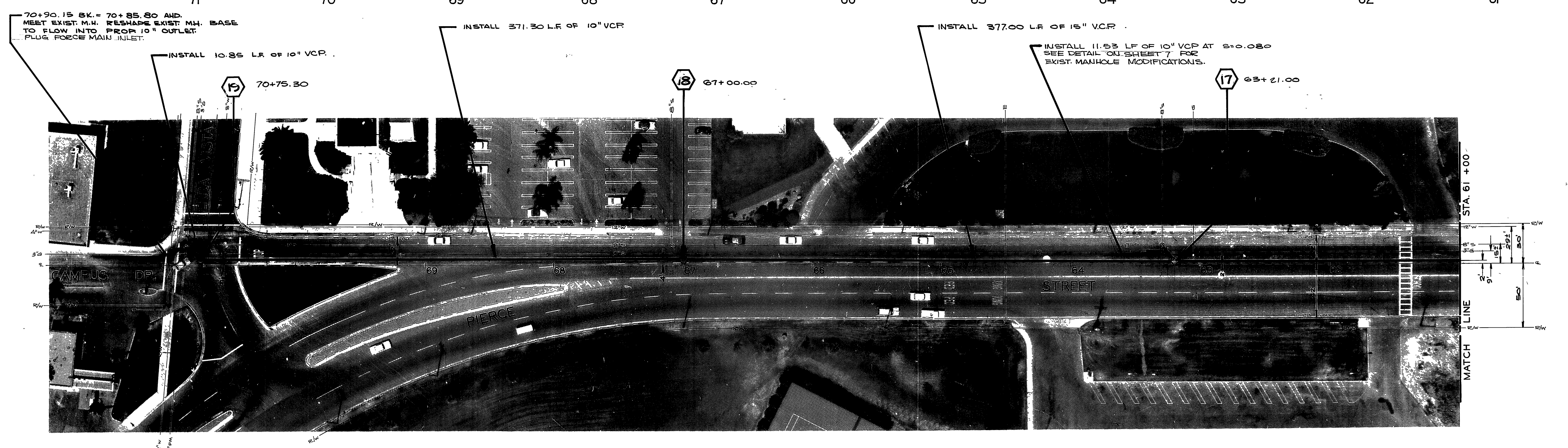


CITY OF RIVERSIDE, CALIFORNIA DEPARTMENT OF PUBLIC WORKS				PIERCE - LA SIERRA TRUNK SEWER		ACCOUNT NO. 527
APPROVED BY SENIOR ENGINEER		BY <i>[Signature]</i>	DATE 1/26	APPROVED BY DIRECTOR OF PUBLIC WORKS		S-723 SHEET 7 OF 8
PARK DEPARTMENT TRAFFIC DIVISION		ASSISTANT CITY ENG.	DATE 1-22-77	COLLETT TO SIERRA VISTA		
DESIGNED BY: BE		DRAWN BY: <i>[Signature]</i>	CHECKED BY: <i>[Signature]</i>	HORIZ. SCALE: 1" = 40' VERT. SCALE: 1" = 4'		S.S. PROJECT NO.

* AS BUILT 9-3-77 BDM



FB. 704/19, 850/36-40, 63-60
 BM. SET PK NAIL IN NE. CORNER
 OF PIERCE # SIERRA VISTA
 ELEV. 743.999



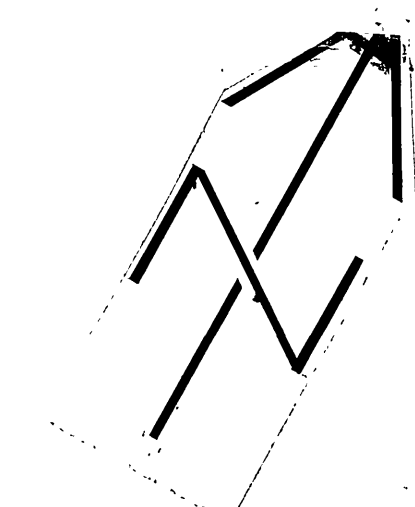
70+90.15 BK. = 70+85.80 AND
 MEET EXIST. M.H. RESHAPE
 EXIST. M.H. BASE TO FLOW
 INTO PROP. 10" OUTLET.

INSTALL 10.85 LF OF 10" VCP.

INSTALL 371.30 LF OF 10" VCP

INSTALL 377.00 LF OF 15" VCP

INSTALL 11.53 LF OF 10" VCP AT S=0.080
 SEE DETAIL 'OU-SHEET 7' FOR
 EXIST. MANHOLE MODIFICATIONS.



* AS BUILT 9-7-71 BDM

CITY OF RIVERSIDE, CALIFORNIA DEPARTMENT OF PUBLIC WORKS		PIERCE - LA SIERRA TRUNK SEWER		ACCOUNT NO. 527
APPROVED BY: [Signature] SENIOR ENGINEER		APPROVED BY: [Signature] DIRECTOR OF PUBLIC WORKS		S-723 SHEET 8 OF 8
DESIGNED BY: BE DRAWN BY: [Signature] CHECKED BY: [Signature]		DATE: [Date]		
MARK REVISIONS APPR. DATE		TRAFFIC DIVISION ASSISTANT CITY ENG. [Signature]		HORIZ. SCALE: 1" = 40' VERT. SCALE: 1" = 4' S.S. PROJECT NO.