

- GENERAL NOTES:**
- Construction shall be in accordance with the City of Riverside Dept. of Public Works Standard Specification No. 461 and Standard Drawings.
  - It shall be the responsibility of the contractor to clear the right-of-way in accordance with the provisions of the law as it affects each utility including irrigation lines and appurtenances and at no cost to the City of Riverside.
  - Joints shall be in conformance to A.S.T.M. Specifications C-425-64 Type I or III or to A.S.T.M. Specifications C-594-66T (Band Seal) with certain exceptions on file with the City Engineer.
  - Pipe shall be bedded per Case I, Standard Drawing No. 452, unless otherwise specified on plan.
  - Location of Tees and laterals will be determined in the field by the owner.
  - All stubs and laterals to be constructed in accordance with Standard Drawing No. 562. Stubs shall be plugged and capped and shall be two feet long.
  - Precast manholes may be used after obtaining prior approval of the City Engineer.
  - Manhole rims shall be set to finish street grades.

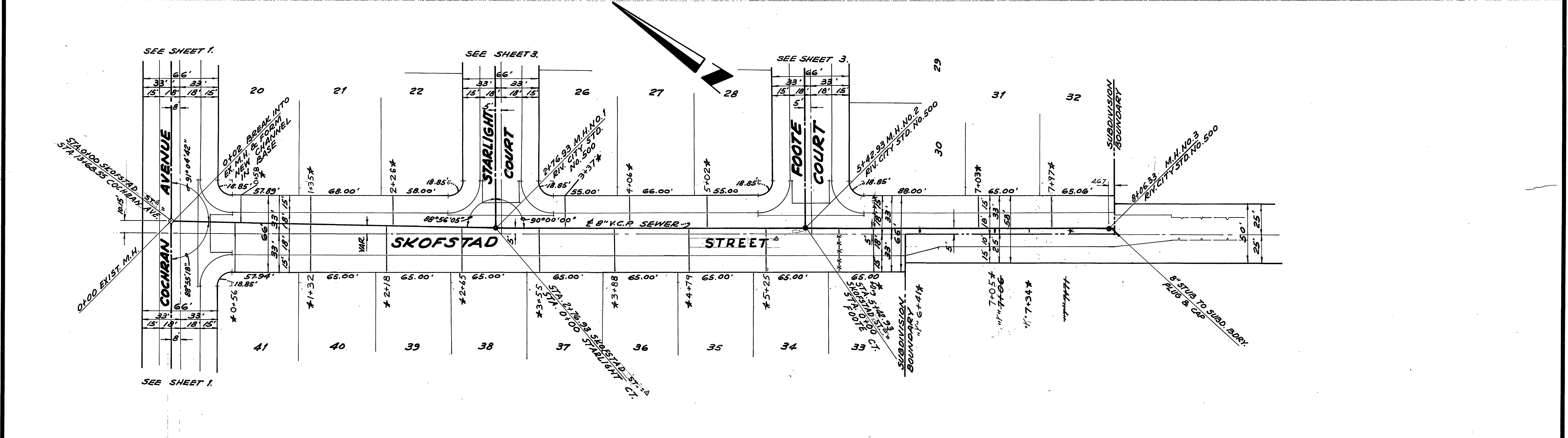
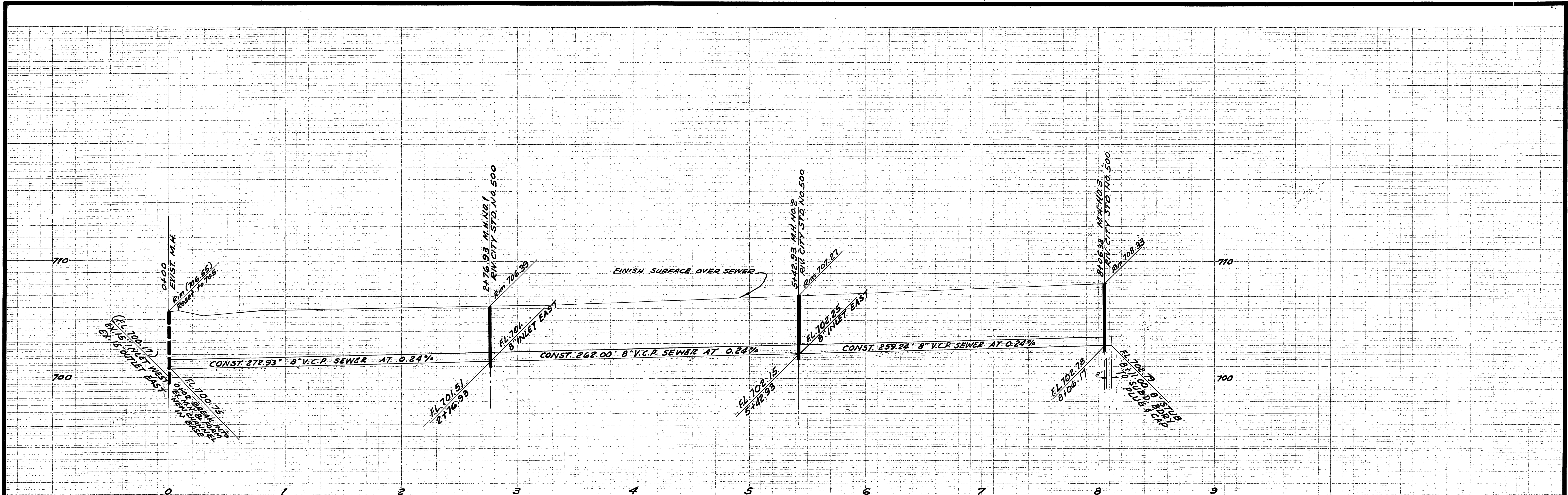
Improve street grade.

\*A5 BUILT 7-25-69 B.M.

BENCH MARK EL. 703.93  
 RIVERSIDE COUNTY B.M. NO. 7  
 CHISELED "N" ON S.E. COR. OF BOTTOM CONC. STEP  
 AT MAIN ENTRANCE TO CHURCH ON MAIN COR.  
 OF HOLE AVE. & JONES AVE.

<b>TECHNOLOGICAL ENGINEERING CORP.</b> 4921 DUFFEE AVE., PICO RIVERA, CALIF. 699-1043 723-8931 <i>Bob Farris</i> APR. 22, 1968 DATE R.R. WARWICK R.C.E. 7830	CHANGED SKOFSTAD AVENUE TO SKOFSTAD STREET ON ALL 7 SHEETS PER CITY COUNCIL ACTION 7-2-68	<b>CITY OF RIVERSIDE, CALIFORNIA</b> DEPARTMENT OF PUBLIC WORKS APPROVED BY: <i>[Signature]</i> DATE: 7-19-68 OFFICE ENGINEER: <i>[Signature]</i> PARK DEPARTMENT: <i>[Signature]</i> TRAFFIC DIVISION: <i>[Signature]</i> ASSISTANT CITY ENG.	<b>SEWER IMPROVEMENTS</b> TRACT NO. 3781 <b>COCHRAN AVENUE</b> FROM 443' EAST OF CARRICK STREET TO LA SIERRA AVENUE	PROJECT NO.
				SHEET 1 OF 3
				FILE NO.

HORIZ. SCALE: 1" = 40' VERT. SCALE: 1" = 4'



\* AS BUILT 7-25-69 B.M.

TECHNOLOGICAL ENGINEERING CORP.  
4921 DURFEE AVE., PICO RIVERA, CALIF.  
629-1043 723-8891  
R.R. WARWICK R.C.E. 7830 DATE

MARK	REVISIONS	APPR.	DATE

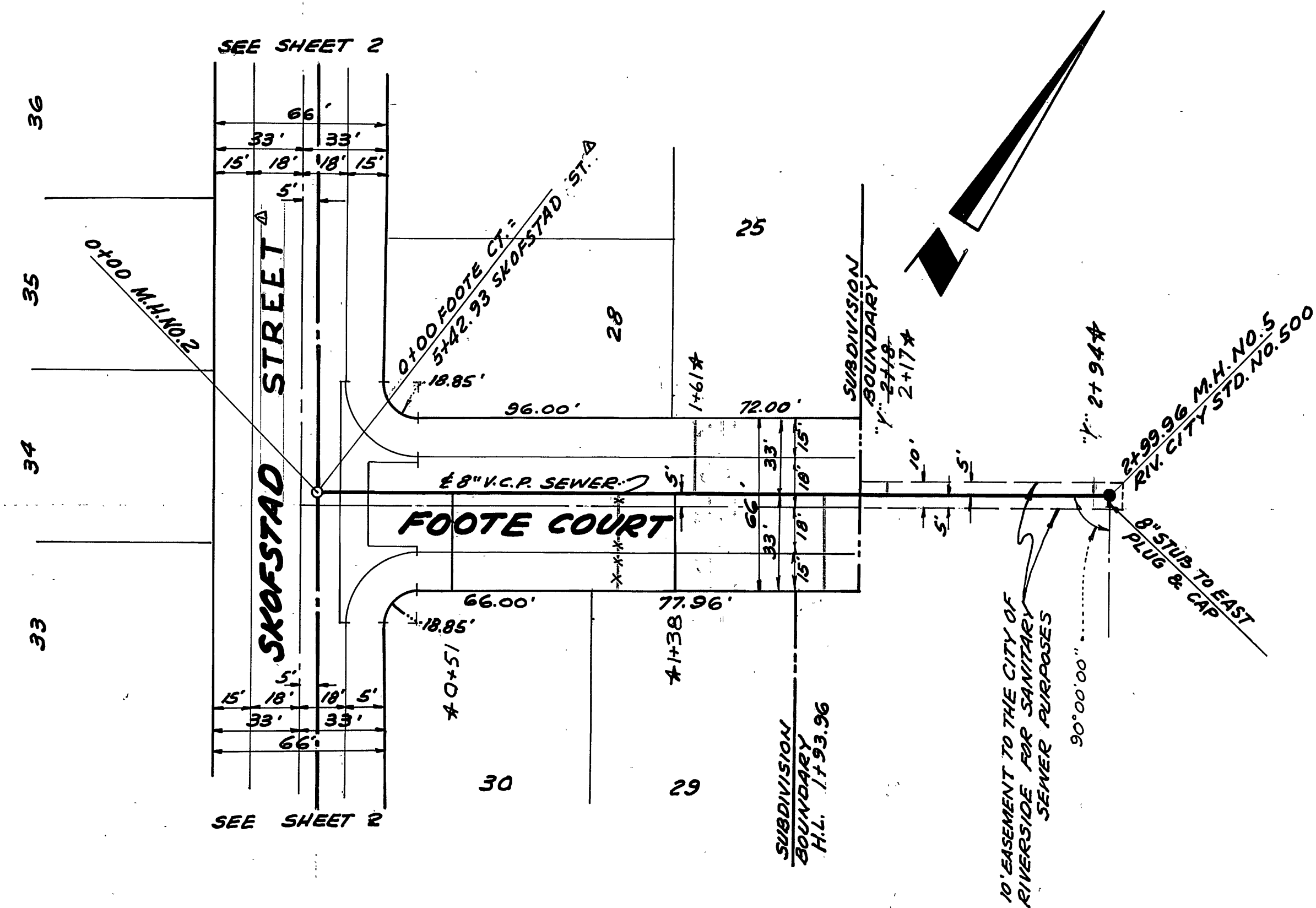
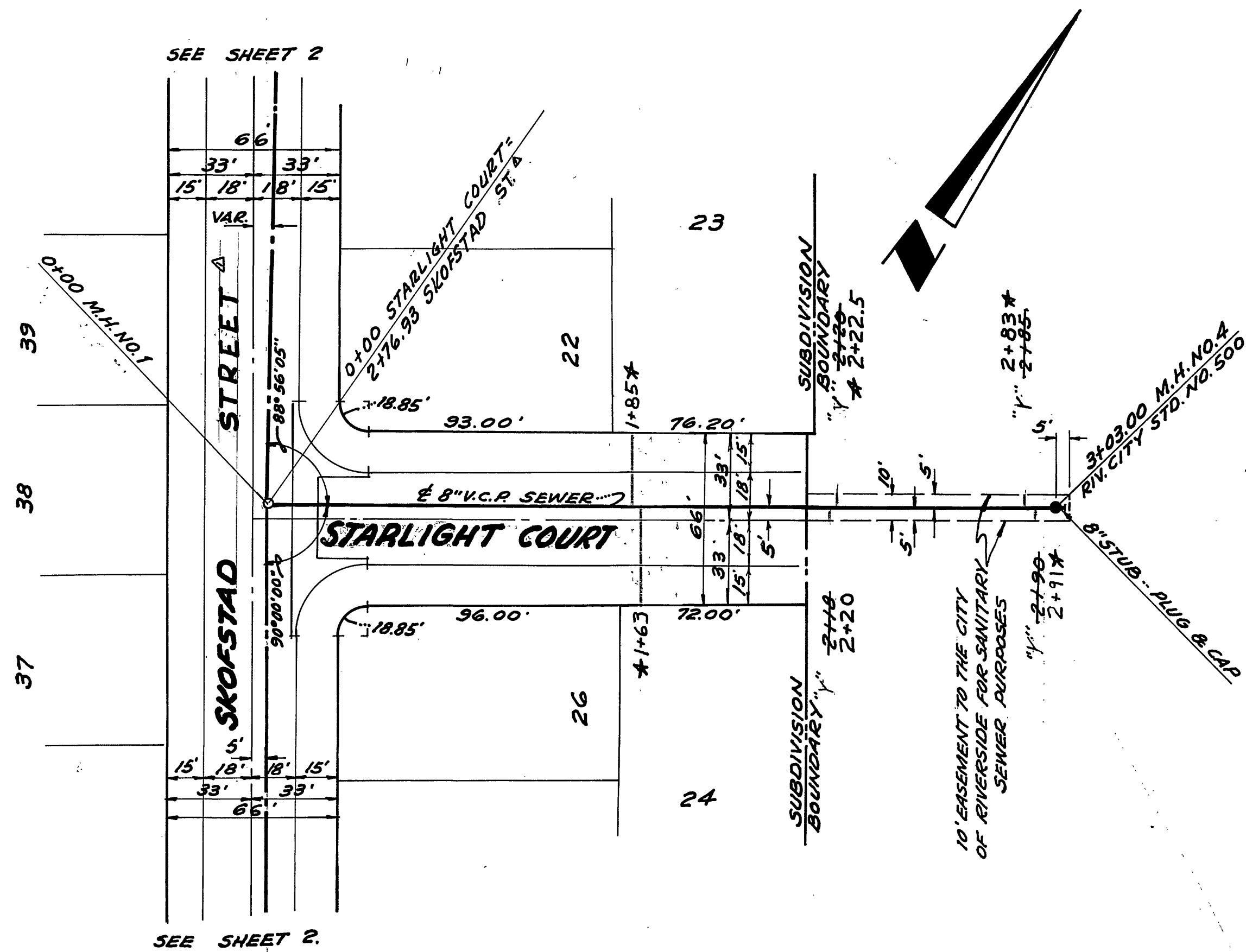
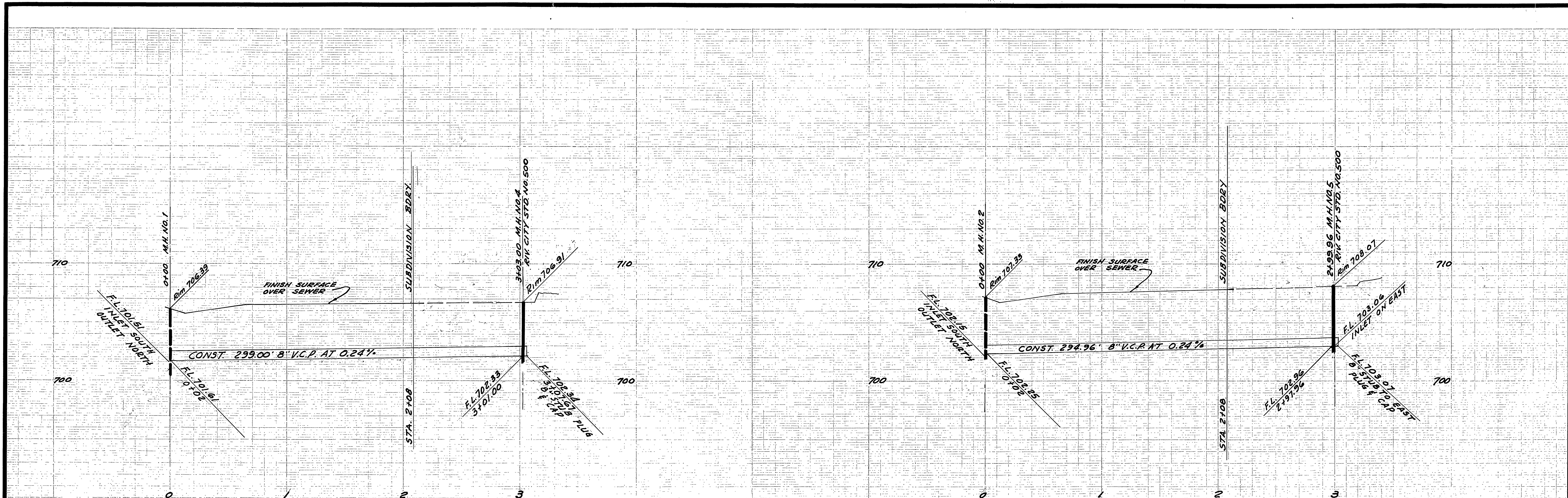
CITY OF RIVERSIDE, CALIFORNIA  
DEPARTMENT OF PUBLIC WORKS  
APPROVED BY: [Signature]  
OFFICE ENGINEER: [Signature]  
TRAFFIC DIVISION: [Signature]  
ASSISTANT CITY ENGINEER: [Signature]

BENCH MARK EL. 703.93  
RIVERSIDE COUNTY B.M. NO. 7  
CHISELED "X" ON S.E. COR. OF BOTTOM CONC.  
STEP AT MAIN ENTRANCE TO CHURCH  
ON N.W. COR. OF HOLE AVE & JONES AVE.

SEWER IMPROVEMENTS  
TRACT NO. 3781  
**SKOFSTAD STREET**  
FROM COCHRAN AVENUE  
TO 264' SOUTH OF FOOTE COURT

PROJECT NO.  
**S-724**  
SHEET 2 OF 3  
FILE NO.

HORIZ. SCALE: 1" = 40' VERT. SCALE: 1" = 4'



\*AS BUILT 7-25-69 B.M.

BENCH MARK EL. 703.93  
RIVERSIDE COUNTY B.M. NO. 7  
CHISELED "X" ON S.E. COR. OF BOTTOM CONC. STEP  
AT MAIN ENTRANCE TO CHURCH ON N.W.  
COR. OF HOLE AVE. & JONES AVE.

TECHNOLOGICAL ENGINEERING CORP.  
4921 DURFEE AVE., PICO RIVERA, CALIF.  
639-1043 723-8891  
R.R. WERNICK R.C.E. 1930  
APR. 23, 1968  
DATE

CITY OF RIVERSIDE, CALIFORNIA  
DEPARTMENT OF PUBLIC WORKS

APPROVED BY: [Signature]  
OFFICE ENGINEER: [Signature]  
PARK DEPARTMENT: [Signature]  
TRAFFIC DIVISION: [Signature]  
ASSISTANT CITY ENG.: [Signature]

SEWER IMPROVEMENTS  
TRACT NO. 3781  
STARLIGHT COURT  
FROM SKOFSTAD STREET TO 308' EASTERLY THEREOF  
FOOTE COURT  
FROM SKOFSTAD STREET TO 305' EASTERLY THEREOF.

PROJECT NO. S-724  
SHEET 3 OF 3  
FILE NO.

DESIGNED BY: P.R.W. DRAWN BY: A.S.C. CHECKED BY: [Signature]  
DATE: 7-22-68  
HORIZ. SCALE: 1" = 40' VERT. SCALE: 1" = 4'