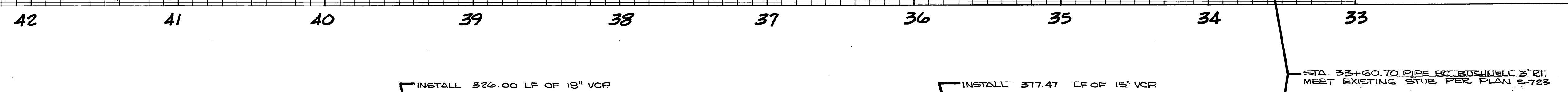
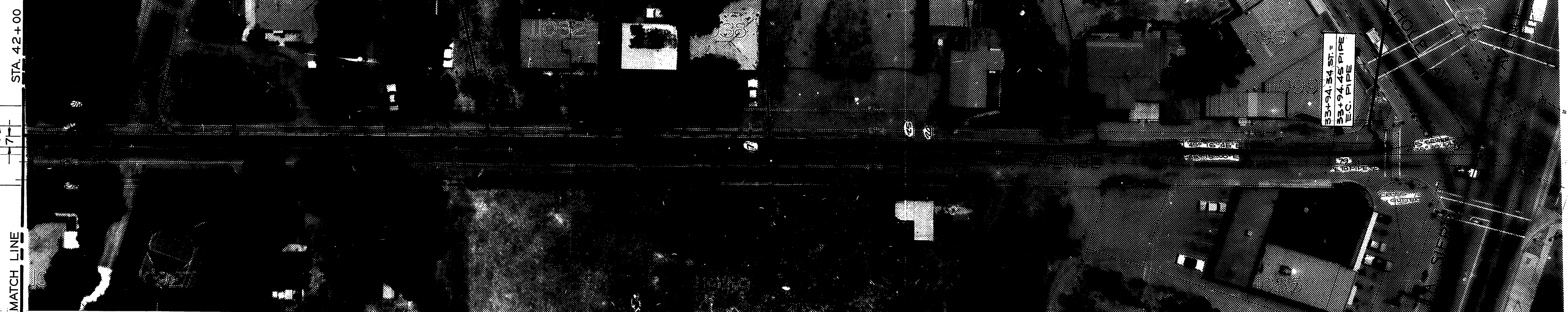


FB. 635/44.41, 66-69; 862/30
 BM RAILROAD SPIKE IN POLE
 #262710E ON N.E. CORNER
 OF MITCHELL AND BUSHNELL
 ELEV. 714.424



GENERAL NOTES

1. CONSTRUCT MANHOLE PER STD. 500 AS INDICATED BY (60) 3+60.50. STATIONS SHOWN ARE ± CONSTRUCT DEEP MH WHERE INDICATED BY (60)
2. PIPE SHALL BE VCP INSTALLED PER STD. 482 CASE 1 AND TYPICAL SECTION ON SHEET 3.
3. ONLY SEWER LATERALS IN CONFLICT WITH THE NEW TRUNK SHALL BE CONNECTED TO IT, PER STD. 562.
4. CONTRACTOR TO CONTACT SOUTHWEST WATER CO. 48 HOURS PRIOR TO TRENCHING. TELEPHONE: 1-213-336-1231
5. WHEN A NEW MANHOLE IS OVER AN EXISTING SEWER, THE EXIST. SEWER IS TO REMAIN IN SERVICE. REMOVE EXIST. PIPE INSIDE NEW MANHOLE. FORM CHANNEL TO NEW OUTLET.
6. WHERE THE PROPOSED SEWER CROSSES A WATER MAIN, THE CONTRACTOR SHALL ENCASE THE SEWER OR WATER MAIN PER SECTION 306-2.1.2 OF THE SPECIAL PROVISIONS.
7. SOIL BORINGS POSTED ON THE PLAN WERE TAKEN ON AUGUST 25, 1970.

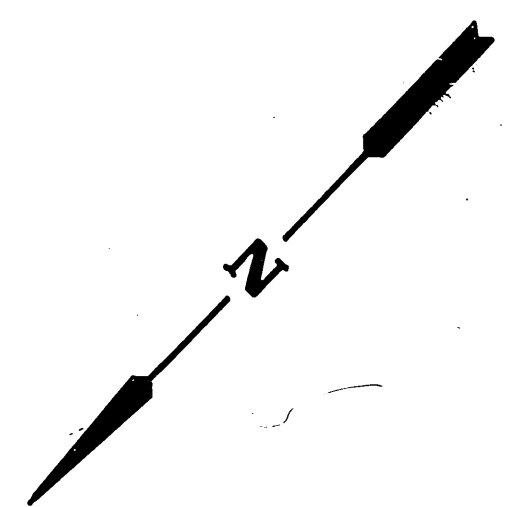


EXISTING TOPOGRAPHY

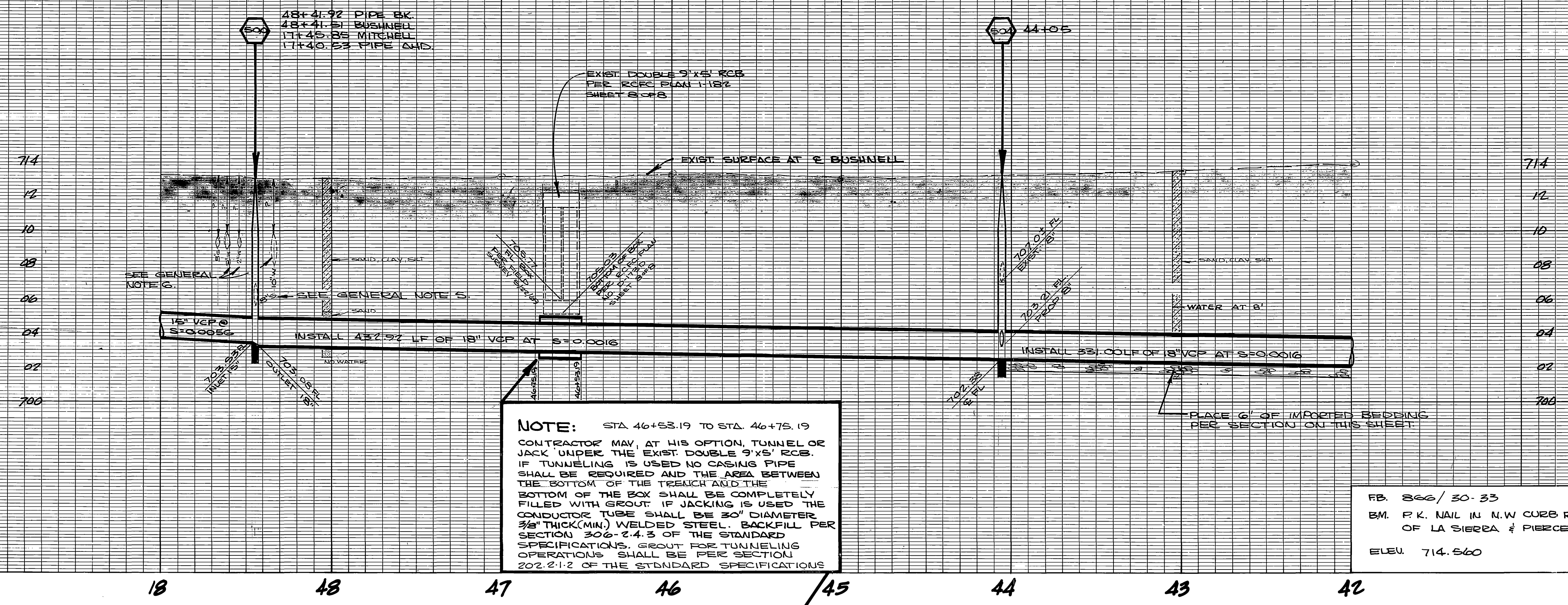
- (C) CULVERT: PCC, CMP, VCP
CULVERTS REMOVED DURING CONSTRUCTION SHALL BE REPLACED IN KIND OR EQUAL.
 - (P) POWER POLE:
CONTRACTOR SHALL CONTACT PUBLIC UTILITIES, ELECTRIC, 24 HOURS PRIOR TO TRENCHING BY POLES. DISTANCES SHOWN OFF E ARE ±1'
TELEPHONE: 787-7511
 - (T) TREE:
CONTRACTOR SHALL PROTECT TREES DURING TRENCHING.
- INDICATES EXACT DEPTH OF UTILITY IS UNKNOWN BUT IS ANTICIPATED TO CLEAR PROPOSED SEWER.

PIPE CURVE DATA

R = 200.00
 Δ = 9° 40' 06"
 L = 33.75'
 T = 16.92'

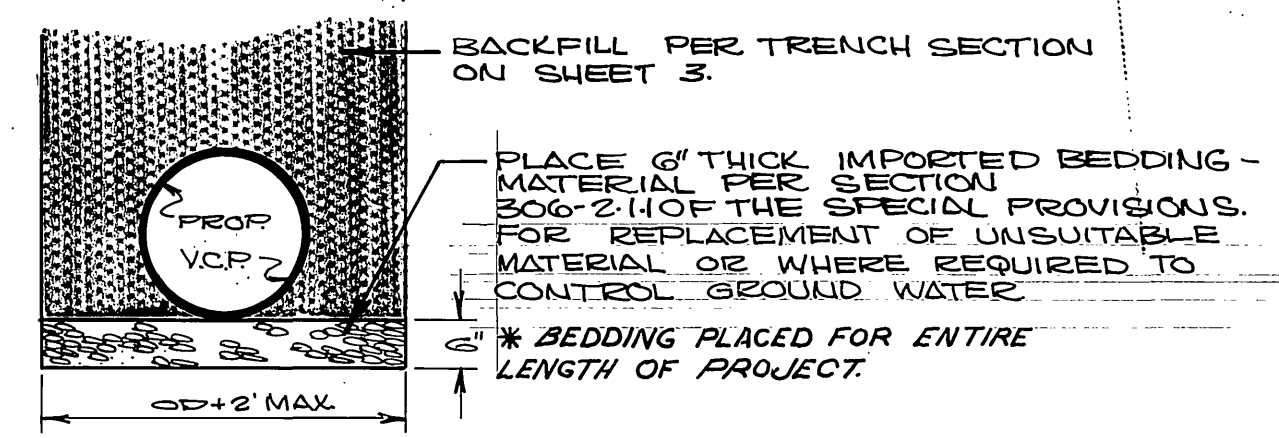
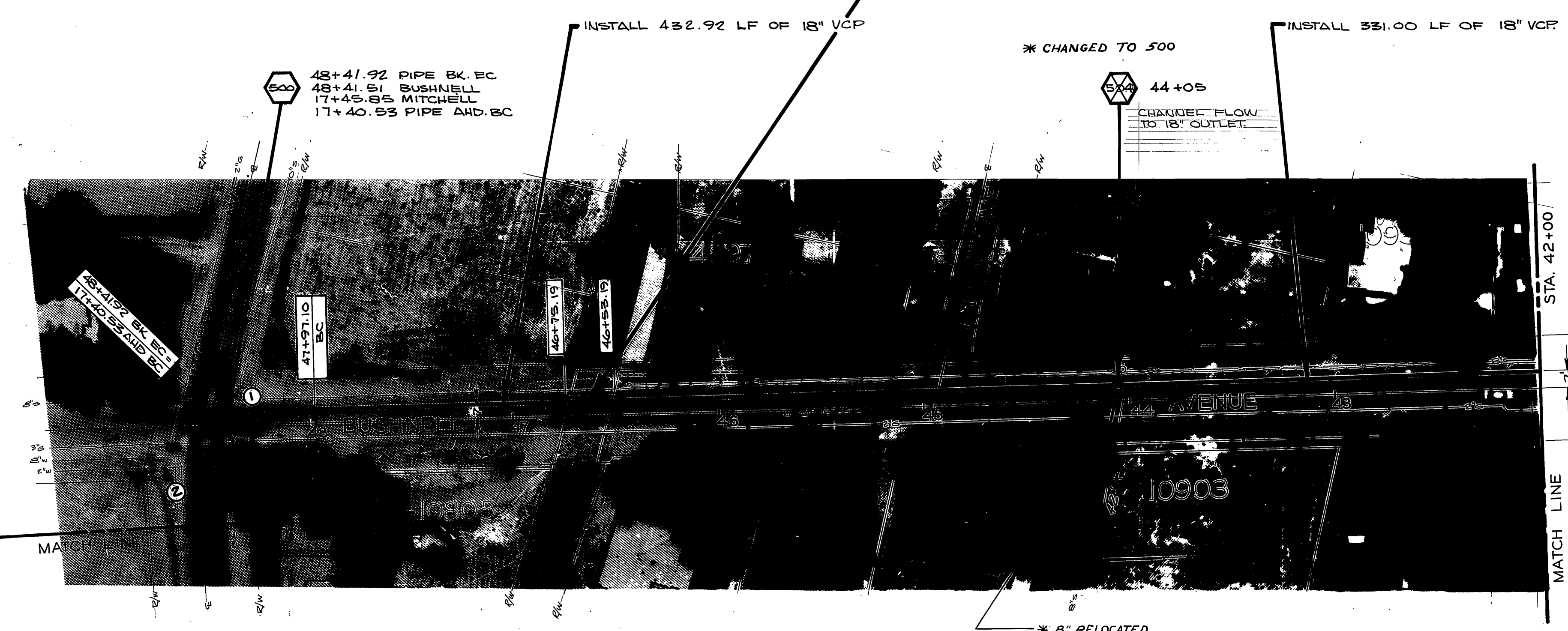


CITY OF RIVERSIDE, CALIFORNIA PUBLIC WORKS DEPARTMENT		MITCHELL - BUSHNELL TRUNK SEWER		ACCOUNT NO. 529
APPROVED BY: [Signature] PRINCIPAL ENGINEER		APPROVED BY: [Signature] DIRECTOR OF PUBLIC WORKS		DRAWING NUMBER S-728
DESIGNED BY: BE		DRAWN BY: [Signature]		SHEET 1 OF 5
DATE: 2-22-71		HORIZ. SCALE: 1" = 40'		VERT. SCALE: 1" = 4'



NOTE: STA 46+53.19 TO STA. 46+75.19
 CONTRACTOR MAY, AT HIS OPTION, TUNNEL OR JACK UNDER THE EXIST. DOUBLE 9\"/>

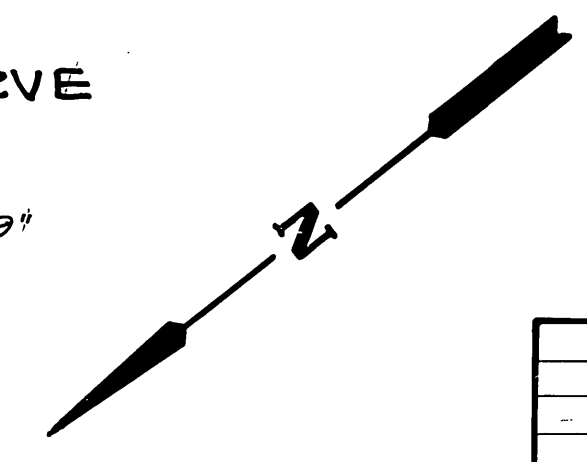
FB. 806/30-33
 B.M. P.K. NAIL IN N.W CORN RETURN
 OF LA SIERRA & PIERCE
 ELEV. 714.560



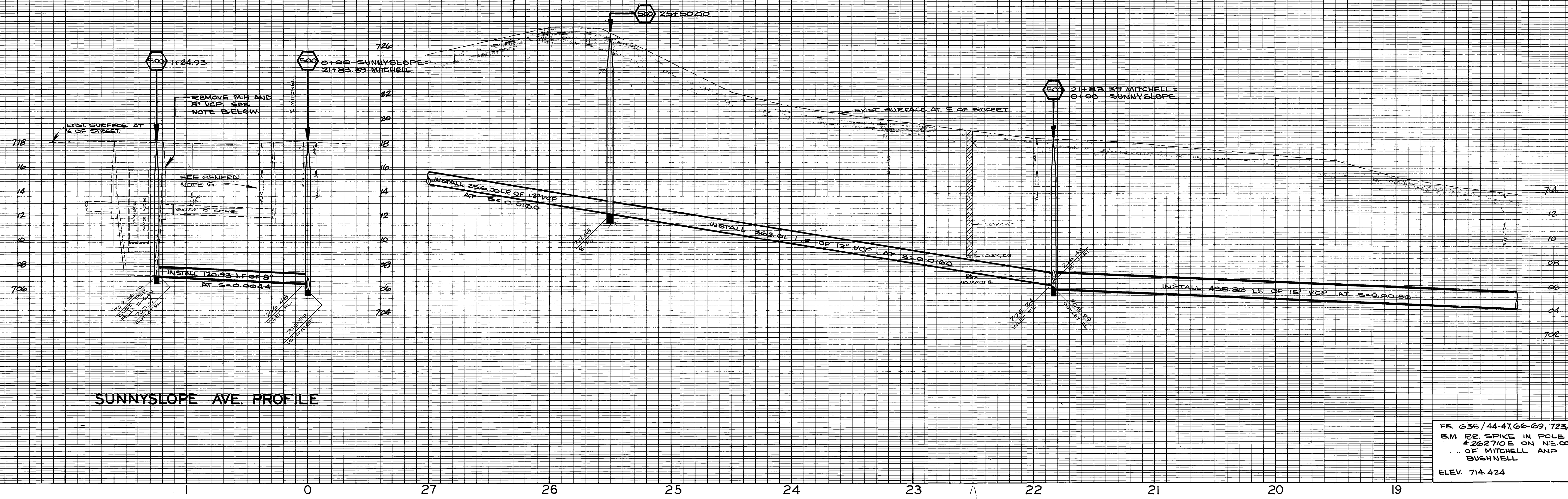
IMPORTED BEDDING
 STA 40+70 TO 44+05
 SCALE 1" = 2'

TENTATIVE LIMITS. FINAL LIMITS TO BE DETERMINED BY INSPECTOR DURING CONSTRUCTION.

PIPE CURVE DATA	PIPE CURVE DATA
R = 200.00'	R = 200.00'
Δ = 31° 14' 25"	Δ = 12° 50' 19"
L = 109.05'	L = 44.82'
T = 55.92'	T = 22.50'

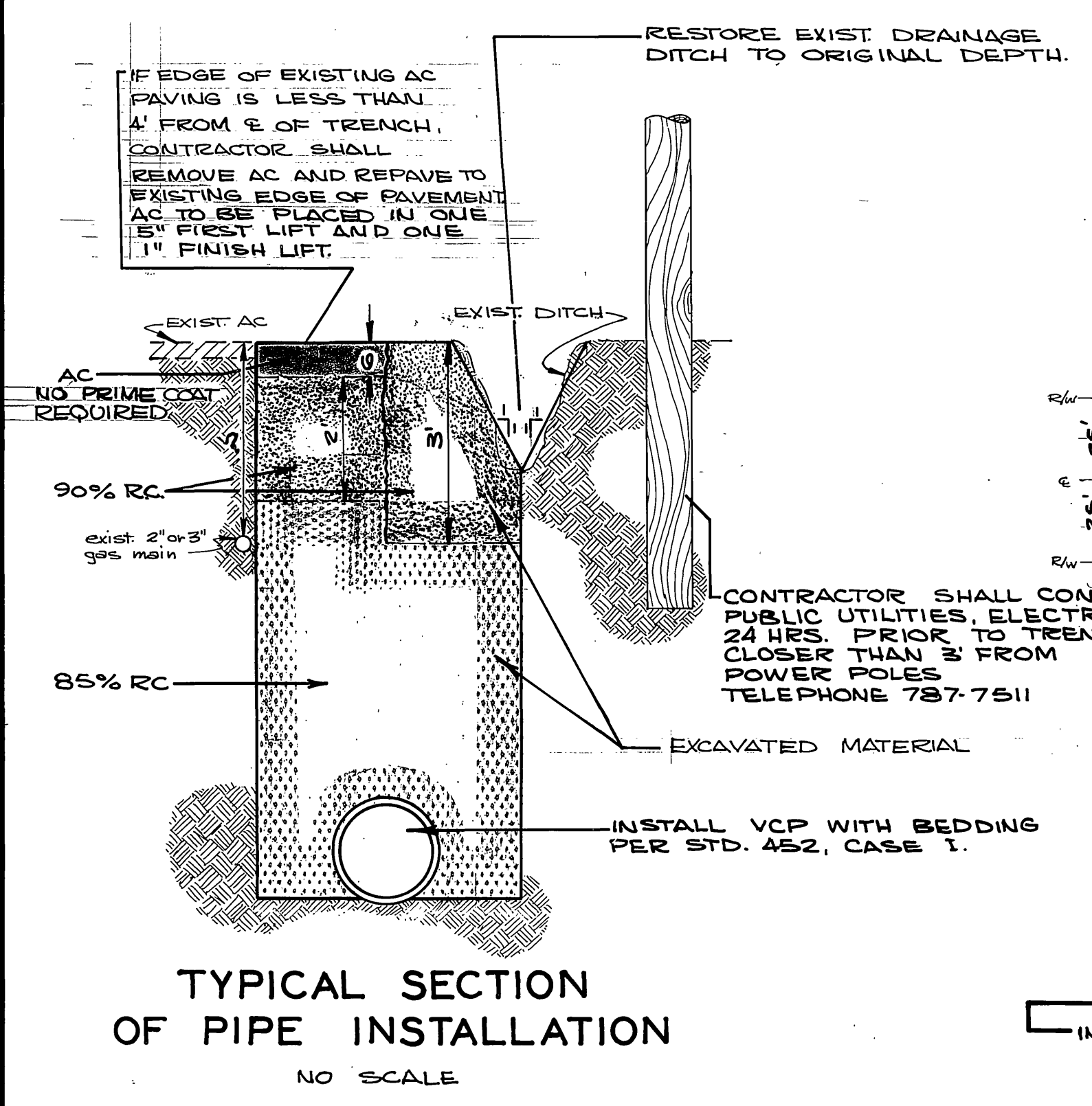


CITY OF RIVERSIDE, CALIFORNIA PUBLIC WORKS DEPARTMENT		MITCHELL - BUSHNELL TRUNK SEWER		ACCOUNT NO. 529 DRAWING NUMBER:
APPROVED BY: [Signature] DATE: 2-19 PRINCIPAL ENGINEER		APPROVED BY: [Signature] DATE: 2-19 DIRECTOR OF PUBLIC WORKS		S-728
MARK REVISIONS APPR. DATE		CHIEF PUB. WKS. ENGR. DATE: 2-19		SHEET 2 OF 5
DESIGNED BY: BE DRAWN BY: [Signature] CHECKED BY: [Signature]		LA SIERRA TO GRAMERCY		HORIZ. SCALE: 1" = 40' VERT. SCALE: 1" = 4'

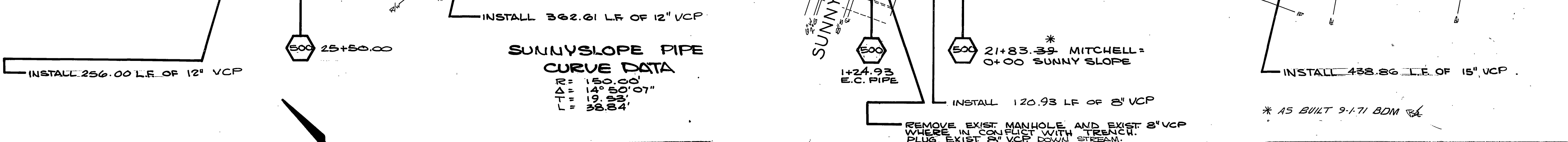
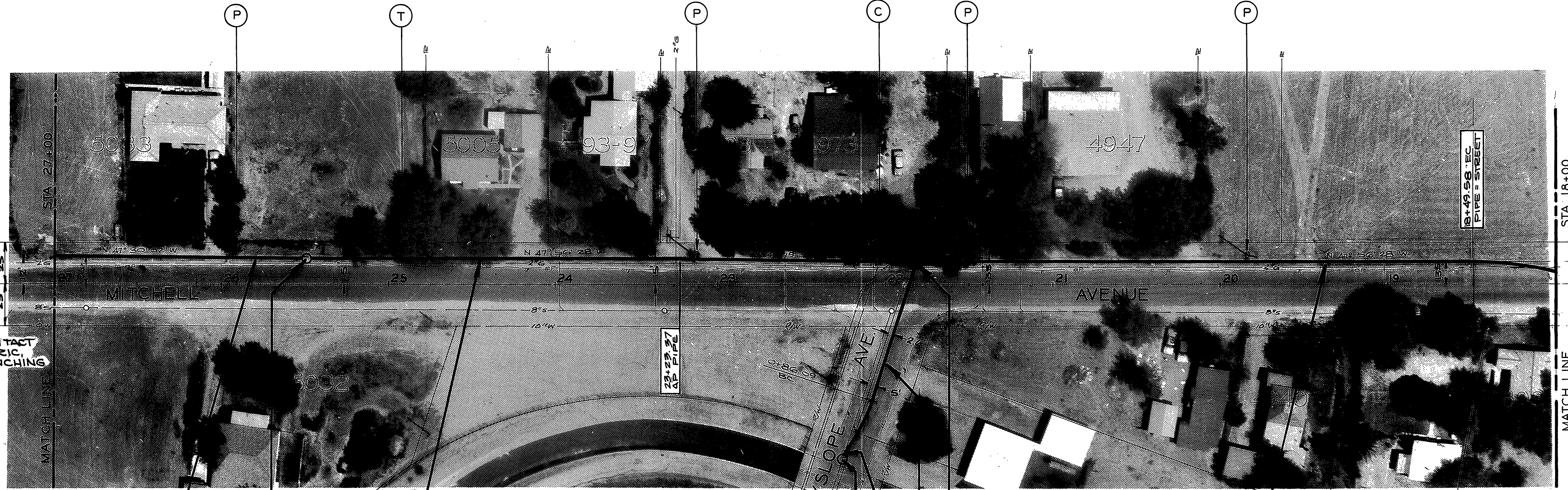


SUNNYSLOPE AVE. PROFILE

FB. 635 / 44-47, 66-69, 723/10
 S.M. IR. SPIKE IN POLE #262710E ON NE. COE OF MITCHELL AND BUSHNELL
 ELEV. 714.424



TYPICAL SECTION OF PIPE INSTALLATION
 NO SCALE



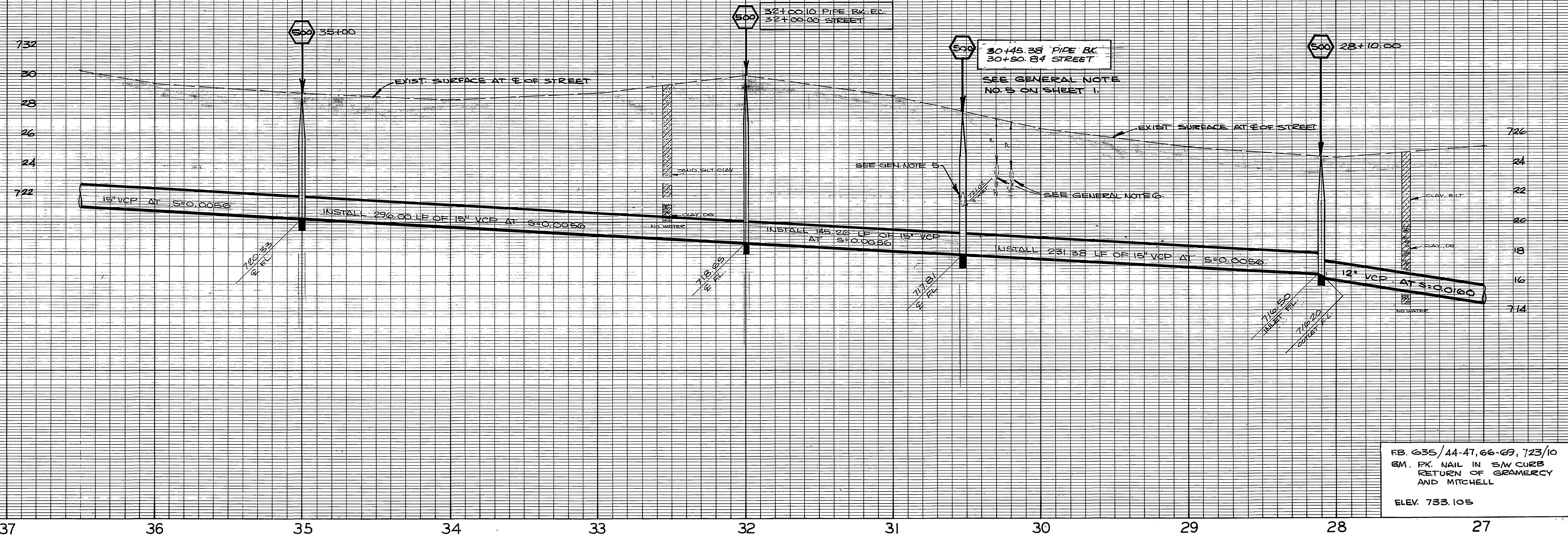
-CAUTION-
PACIFIC TELEPHONE
CABLES UNDERGROUND
BEFORE EXCAVATING
CALL COLLECT:
 After Hours & Holidays
 7:30 A.M. to 5 P.M. 714-633-0911 714-547-6606
 Orange County 714-633-0911 714-547-6606
 Riverside County 714-684-0071 714-547-6606
FOR FREE CABLE LOCATING SERVICE

MARK	REVISIONS	APPR.	DATE

CITY OF RIVERSIDE, CALIFORNIA
DEPARTMENT OF PUBLIC WORKS
 APPROVED BY: [Signature] DATE: 2-19
 SENIOR ENGINEER
 PARK DEPARTMENT
 TRAFFIC DIVISION
 ASSISTANT CITY ENG. DATE: 2-19

MITCHELL - BUSHNELL
TRUNK SEWER
 LA SIERRA TO GRAMERCY
 HORIZ. SCALE: 1" = 40'
 VERT. SCALE: 1" = 4'

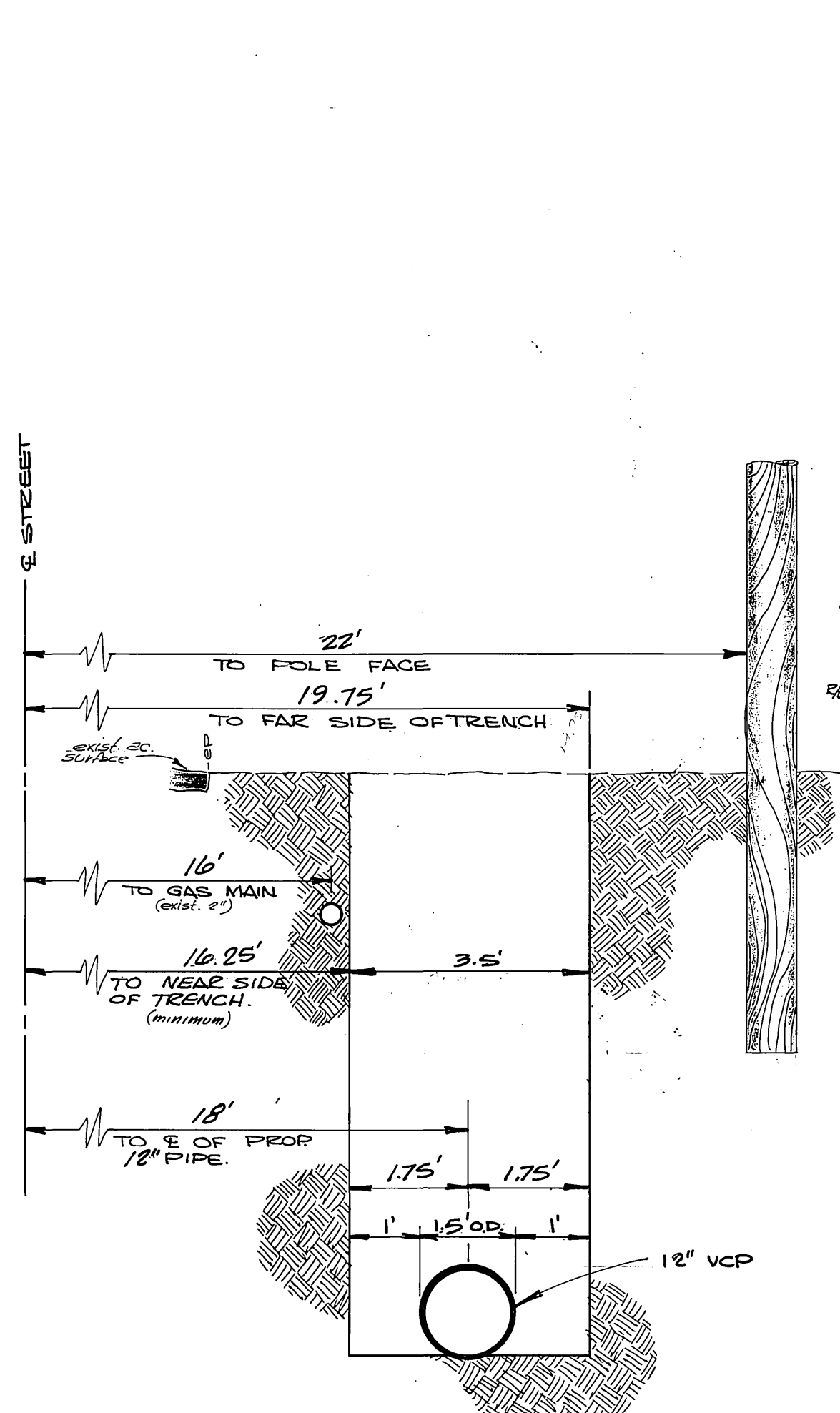
ACCOUNT NO. 529
S-728
 SHEET 3 OF 5
 S.S. PROJECT NO.



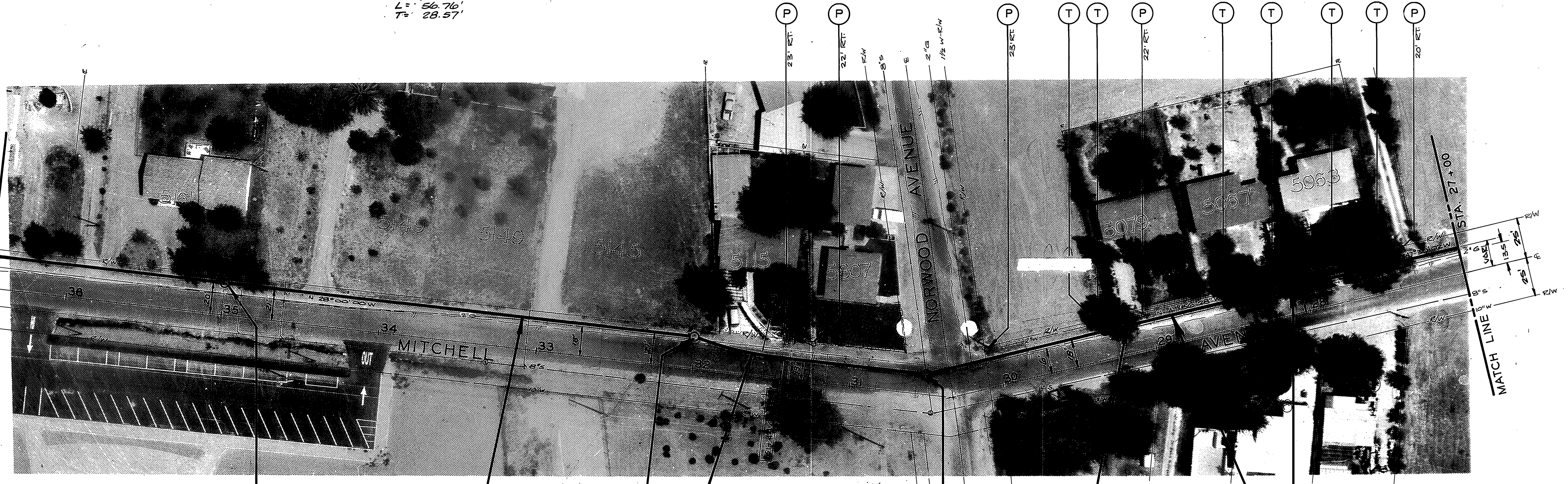
FB. 635/44-47, 66-69, 723/10
 EM. PK NAIL IN S/W CURB
 RETURN OF GRAMERCY
 AND MITCHELL
 ELEV. 733.105

PIPE CURVE DATA

Ⓢ R = 200'
 Δ = 16°15'38"
 L = 56.76'
 T = 28.57'



SECTION A-A
 STA. 28+50 TO 30+50
 SCALE 1" = 2'



* 34+97.50
 35+00
 1' OFFSET THROUGH MANHOLE

* 32+00.10
 32+10-00 PIPE BK. EC.
 32+00.00 STREET
 INSTALL 298.00 L.F. OF 15" VCP

* 30+45.38 PIPE BK.
 30+50-84 STREET
 *
 SEE GENERAL NOTE NO. 5.
 * AS BUILT 9-17-71 BDM

* 28+10.00
 1' OFFSET THROUGH MANHOLE
 INSTALL 231.38 L.F. OF 12" VCP

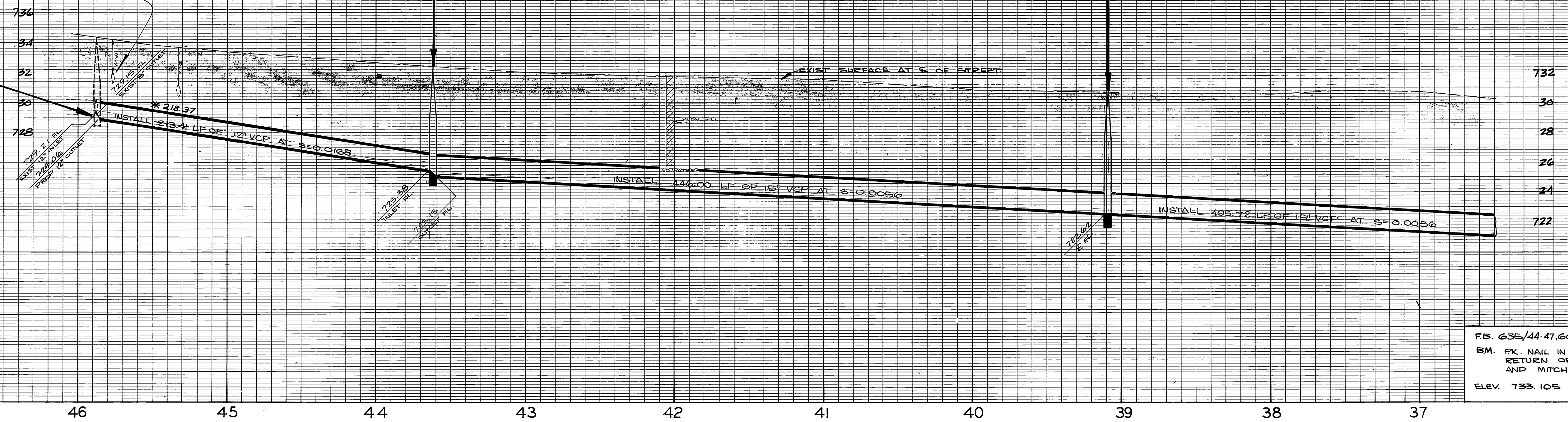
CITY OF RIVERSIDE, CALIFORNIA DEPARTMENT OF PUBLIC WORKS		MITCHELL - BUSHNELL TRUNK SEWER		ACCOUNT NO. 529
APPROVED BY SENIOR ENGINEER PARK DEPARTMENT TRAFFIC DIVISION	BY DATE 2-17	APPROVED BY <i>[Signature]</i> DIRECTOR OF PUBLIC WORKS	S-728	
DESIGNED BY BE	DRAWN BY TW	CHECKED BY LL	SHEET 4 OF 5	
HORIZ. SCALE: 1" = 40'			VERT. SCALE: 1" = 4'	
S.S. PROJECT NO.				

* 45+86.18
 45+81.81 EX. 45+82.00 AHD.
 MEET EXIST. MANHOLE. RESHAPE
 MANHOLE BASE
 PER DETAIL BELOW.

SEE GENERAL
 NOTE 9

500 43+63.81

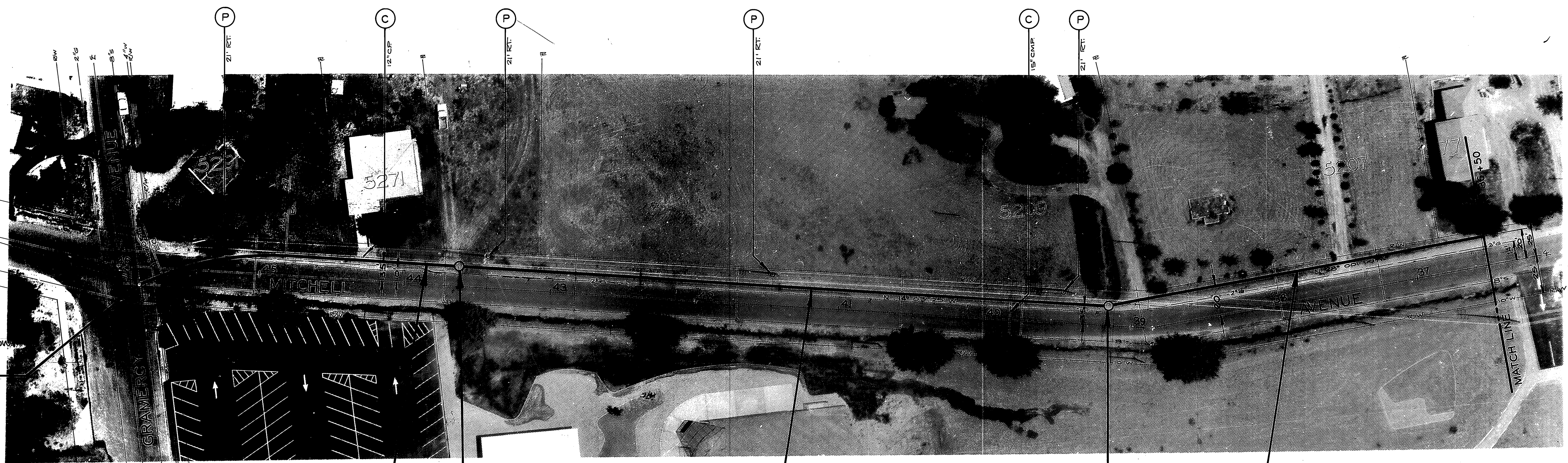
* 39+10
 39+09.72 EX. =
 39+13.81 AHD.



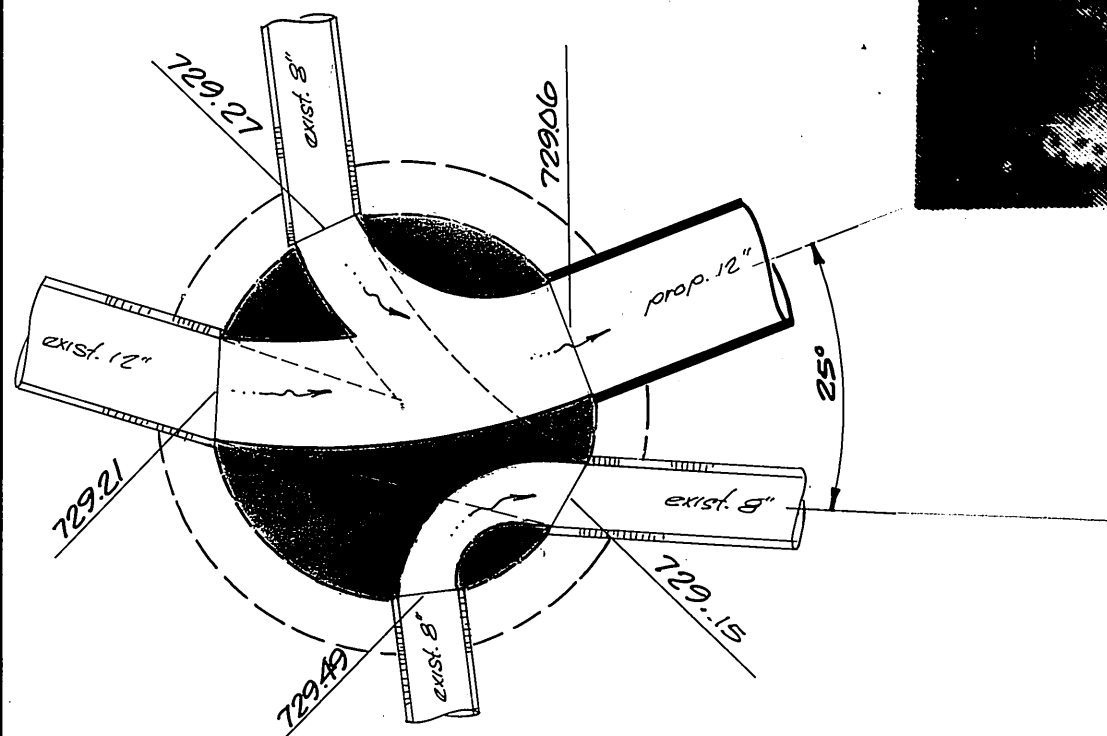
RS. 635/44-47, 66-69, 723/10
 BM. PK. NAIL IN S/W CORN.
 RETURN OF GRAMERCY
 AND MITCHELL.
 ELEV. 733.105

CURVE DATA

R = 300'
 Δ = 25° 00' 00"
 L = 87.27'
 T = 44.34'



* 45+86.18
 45+81.81 EX. 45+82.00 AHD.
 MEET EXIST. MANHOLE. RESHAPE
 MANHOLE BASE PER DETAIL BELOW.



EXIST. MANHOLE DETAIL

STA. 45+81.22
 SCALE 1" = 2'

500 * 43+64
 43+63.81

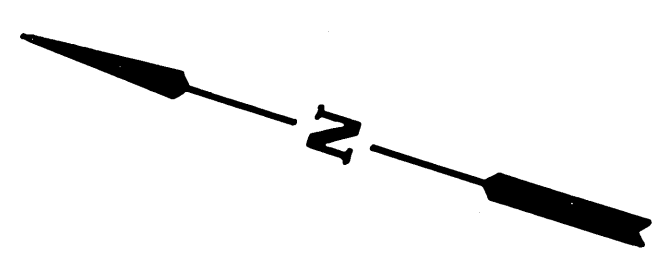
* 218.37
 INSTALL 213.4' LF OF 12" VCP

* 39+10
 39+09.72 EX. =
 39+13.81 AHD.

INSTALL 446.00 L.F. OF 15" VCP

INSTALL 405.72 L.F. OF 15" VCP

* AS BUILT 9-171 BDM B/C



CITY OF RIVERSIDE, CALIFORNIA DEPARTMENT OF PUBLIC WORKS				MITCHELL - BUSHNELL TRUNK SEWER		ACCOUNT NO. 529
APPROVED BY	BY	DATE	APPROVED BY	BY	DATE	S-728
SENIOR ENGINEER	LL	2-19	DIRECTOR OF PUBLIC WORKS	LL	2-22-71	
MARK REVISIONS		APPR. DATE	DESIGNED BY BE		DRAWN BY JTW	SHEET 5 OF 5
TRAFFIC DIVISION		ASSISTANT CITY ENG. LL	CHECKED BY LL			
HORIZ. SCALE: 1" = 40'				VERT. SCALE: 1" = 4'		S.S. PROJECT NO.