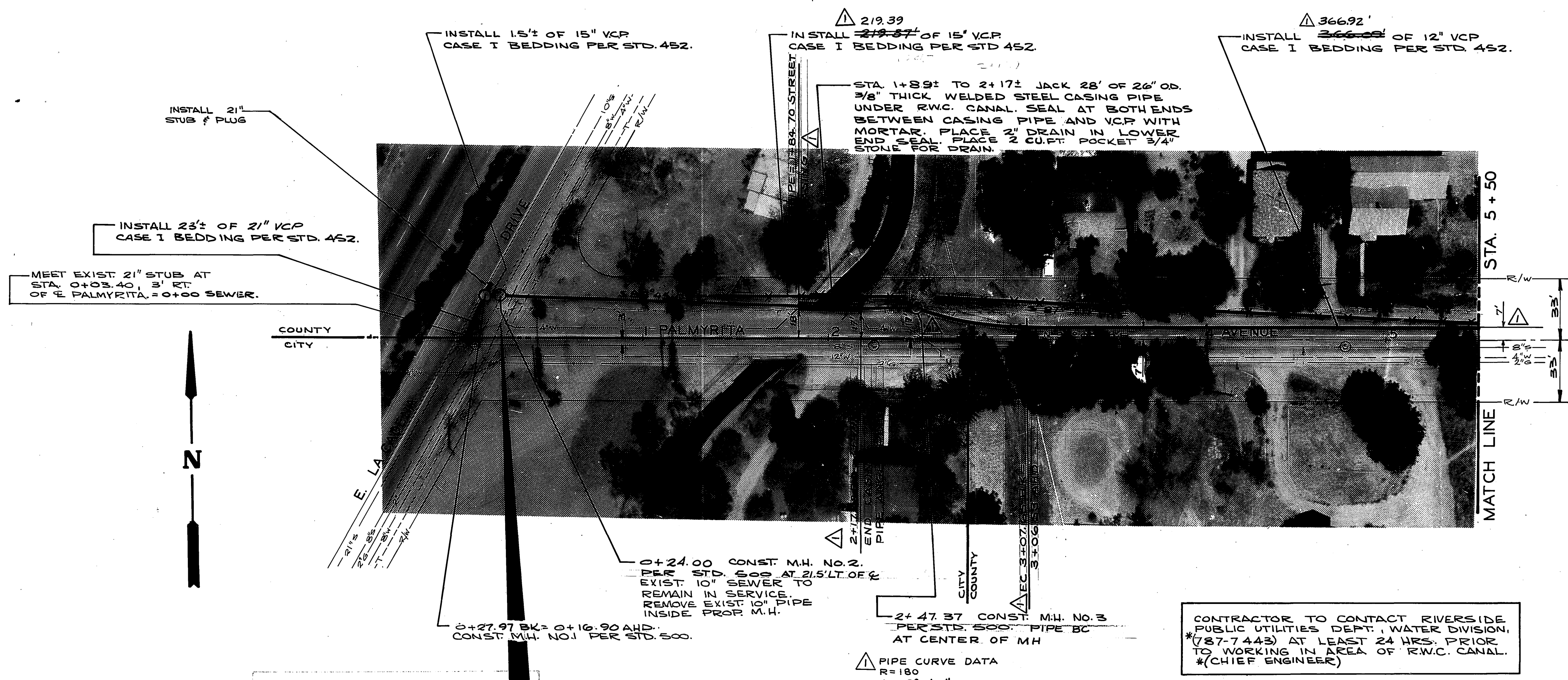


F.B. 741/44-58  
 B.M. 60d SPIKE IN W. CURB OF E. OUTER HIWAY 14' SW. OF E. PALMYRITA AT LA CADENA.  
 ELEV. 881.476

**NOTE:**

1. CONTRACTOR TO ERECT AND MAINTAIN A FENCE AROUND BORE PITS.
2. MANHOLES SHALL HAVE A MINIMUM OF 18" OF ADJUSTING RINGS.



**-CAUTION-**  
**PACIFIC TELEPHONE**  
**CABLES UNDERGROUND**  
 BEFORE EXCAVATING  
 CALL COLLECT:

Orange County	714-633-0811	714-547-6606
Riverside County	714-684-0071	714-547-6606
Inyo County	714-684-0071	714-547-6606
San Bernardino County	714-684-0071	714-547-6606
Los Angeles County	213-621-3111	24 HOUR SERVICE
Ventura County	213-621-3111	24 HOUR SERVICE
San Diego County	714-298-0595	714-232-0027

FOR FREE CABLE LOCATING SERVICE

APPROVED BY  
*Howard K. Coe*  
 CHIEF UTILITIES ENGINEER  
 DATE: 11-14-68

MARK	REVISIONS	APPR. DATE
DESIGNED BY	DRAWN BY	CHECKED BY

CITY OF RIVERSIDE, CALIFORNIA  
 DEPARTMENT OF PUBLIC WORKS

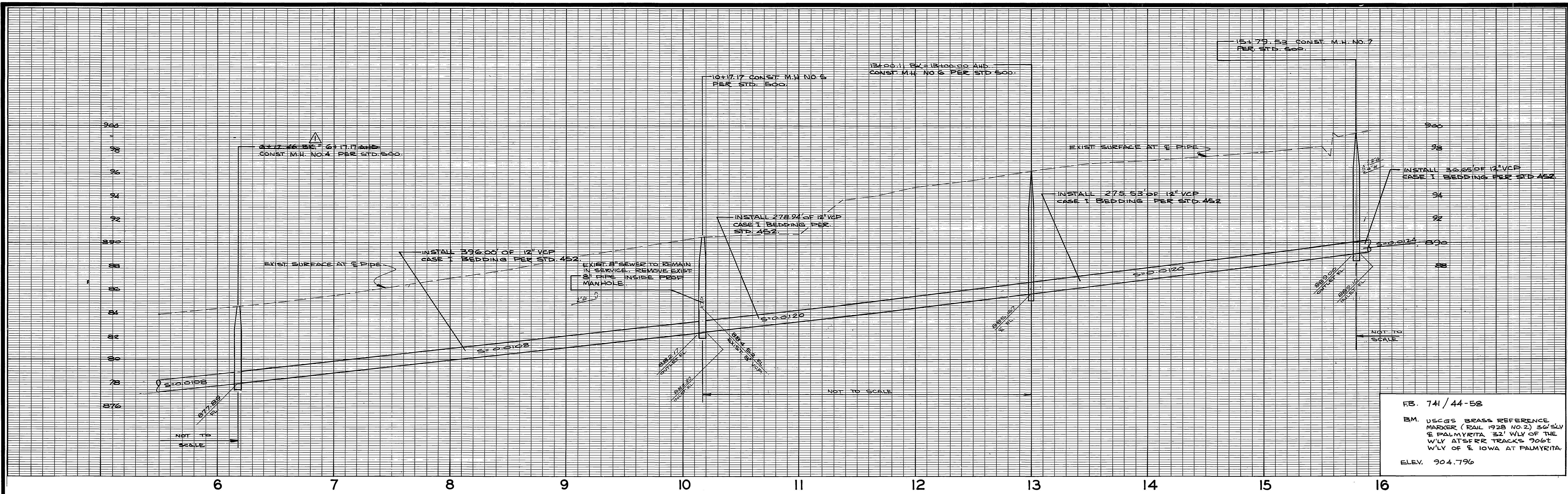
APPROVED BY: *[Signature]*  
 SENIOR ENGINEER  
 DATE: 6-20-69

APPROVED BY: *[Signature]*  
 DIRECTOR OF PUBLIC WORKS  
 DATE: 6-20-69

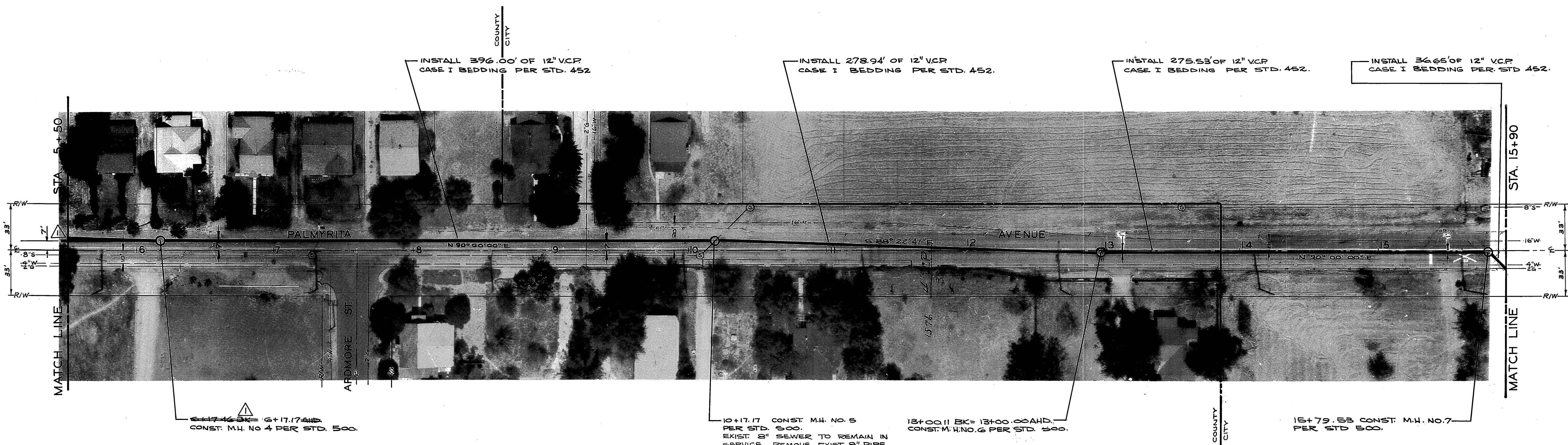
PALMYRITA TRUNK  
 SEWER No 2  
 EAST LA CADENA TO AT&SFRR

ACCOUNT No. 522  
**S-729**  
 SHEET 1 OF 3  
 HORIZ. SCALE: 1" = 40'  
 VERT. SCALE: 1" = 4'  
 S.S. PROJECT NO.





FB. 741/44-58  
 B.M. USGS BRASS REFERENCE MARKER (RAIL 1928 NO. 2) 34' SLY E PALMYRITA 32' WLY OF THE WLY AT&FR TRACKS 906' WLY OF E IOWA AT PALMYRITA. ELEV. 904.796



CONTRACTOR TO CONTACT RIVERSIDE PUBLIC UTILITIES DEPT. WATER DIVISION, # (787-7511) AT LEAST 24 HRS. PRIOR TO TRENCHING IN AREA OF WATER MAIN. \* (FIELD OPERATIONS BRANCH)

APPROVED BY <i>Howard &amp; Cream</i> CHIEF UTILITIES ENGINEER DATE 11-14-68	CITY OF RIVERSIDE, CALIFORNIA DEPARTMENT OF PUBLIC WORKS		PALMYRITA TRUNK SEWER No 2 EAST LA CADENA TO AT&SFRR	ACCOUNT NO. 522 <b>S-729</b> SHEET 2 OF 3
	DESIGNED BY BE DRAWN BY JW CHECKED BY	REVISIONS APPR. DATE		
HORIZ. SCALE: 1" = 40'    VERT. SCALE: 1" = 4'    S.S. PROJECT NO.				



