

BENCH MARK
 BK NAIL IN LEAD IN CURB ON S.W. SIDE OF FOX ST. 6' WEST OF
 C.C. AT HARRISON ST. ELEV. 803.905. (C/R PLAN NO. R-713)

GENERAL NOTES

shall be in accordance with the City of Riverside,
 Public Works, Standard Specifications No. 451 and
 452.

responsibility of the contractor to clear
 accordance with the provisions of the
 utility including irrigation lines and
 set to the City.

route shall be in accordance with A.S.T.M. Specifications C-415-64
 Type I or III or to A.S.T.M. Specifications C-594-66T (Revised 5-66) with
 certain exceptions or modifications as filed with City Engineer.

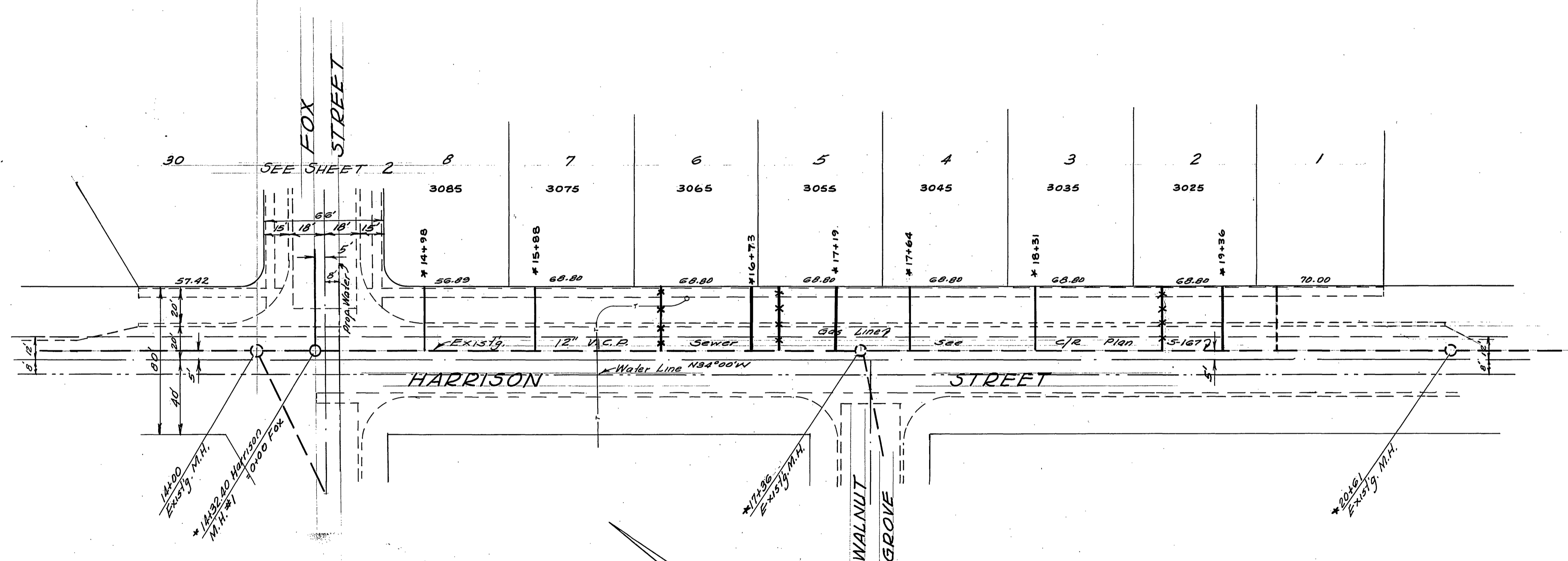
Standard Drawing No. 452.

marked in the field by
 the owner or his representative.

accordance with
 and capped.

or proposed
 pavement grades.

existing
 elevations.



QUANTITY ESTIMATE

8" VITRIFIED CLAY PIPE	1,063 L.F.
4" VITRIFIED CLAY PIPE	986 L.F.
4"x8" TEES	22 EA.
SADDLES	7 EA.
MANHOLES STANDARD No. 500	5 EA.
CLEANOUT STANDARD No. 560	2 EA.

-CAUTION-
PACIFIC TELEPHONE
CABLES UNDERGROUND
BEFORE EXCAVATING
CALL COLLECT:
 7:30 A.M. to 5 P.M. After Hours & Holidays

Orange County	714-633-0811	714-547-6606
Riverside County	714-684-0071	714-547-6606
Inyo County	714-684-0071	714-547-6606
San Bernardino County	714-684-0071	714-547-6606
Los Angeles County	213-621-3111	24 HOUR SERVICE
Ventura County	213-621-3111	
San Diego County	714-298-8595	714-232-0027

FOR FREE CABLE LOCATING SERVICE

* AS BUILT 3-19-69 B.E.

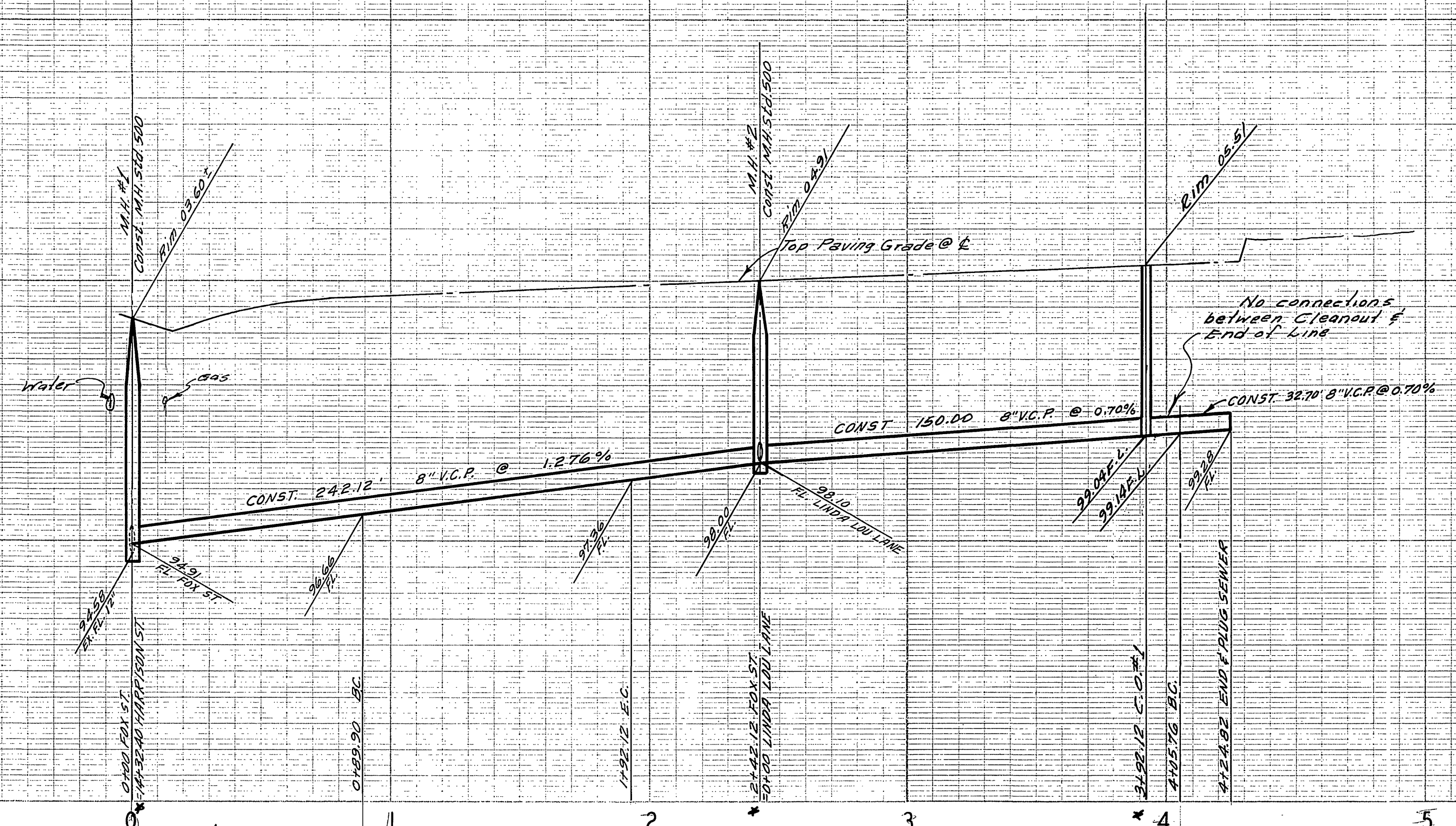
Approved by <i>[Signature]</i> R.C.E. 3076 Date 2/12/68 W.O. 67-418-Woodhaver Dev. F.B. 1002	<table border="1"> <tr> <td>APPROVED BY</td> <td>BY</td> <td>DATE</td> </tr> <tr> <td>OFFICE ENGINEER</td> <td><i>[Signature]</i></td> <td>2/12/68</td> </tr> <tr> <td>PARK DEPARTMENT</td> <td></td> <td></td> </tr> <tr> <td>TRAFFIC DIVISION</td> <td></td> <td></td> </tr> <tr> <td>ASSISTANT CITY ENG.</td> <td></td> <td></td> </tr> </table>	APPROVED BY	BY	DATE	OFFICE ENGINEER	<i>[Signature]</i>	2/12/68	PARK DEPARTMENT			TRAFFIC DIVISION			ASSISTANT CITY ENG.			CITY OF RIVERSIDE, CALIFORNIA DEPARTMENT OF PUBLIC WORKS SEWER PLAN & PROFILE HARRISON STREET TRACT NO. 3739	PROJECT NO. S-731 SHEET 1 OF 3 FILE NO. 67-418-B
APPROVED BY	BY	DATE																
OFFICE ENGINEER	<i>[Signature]</i>	2/12/68																
PARK DEPARTMENT																		
TRAFFIC DIVISION																		
ASSISTANT CITY ENG.																		
DESIGNED BY REC. DRAWN BY REC. CHECKED BY BL.	DATE 11/18/65	HORIZ. SCALE: 1" = 40'	VERT. SCALE: 1" = 4'															

805

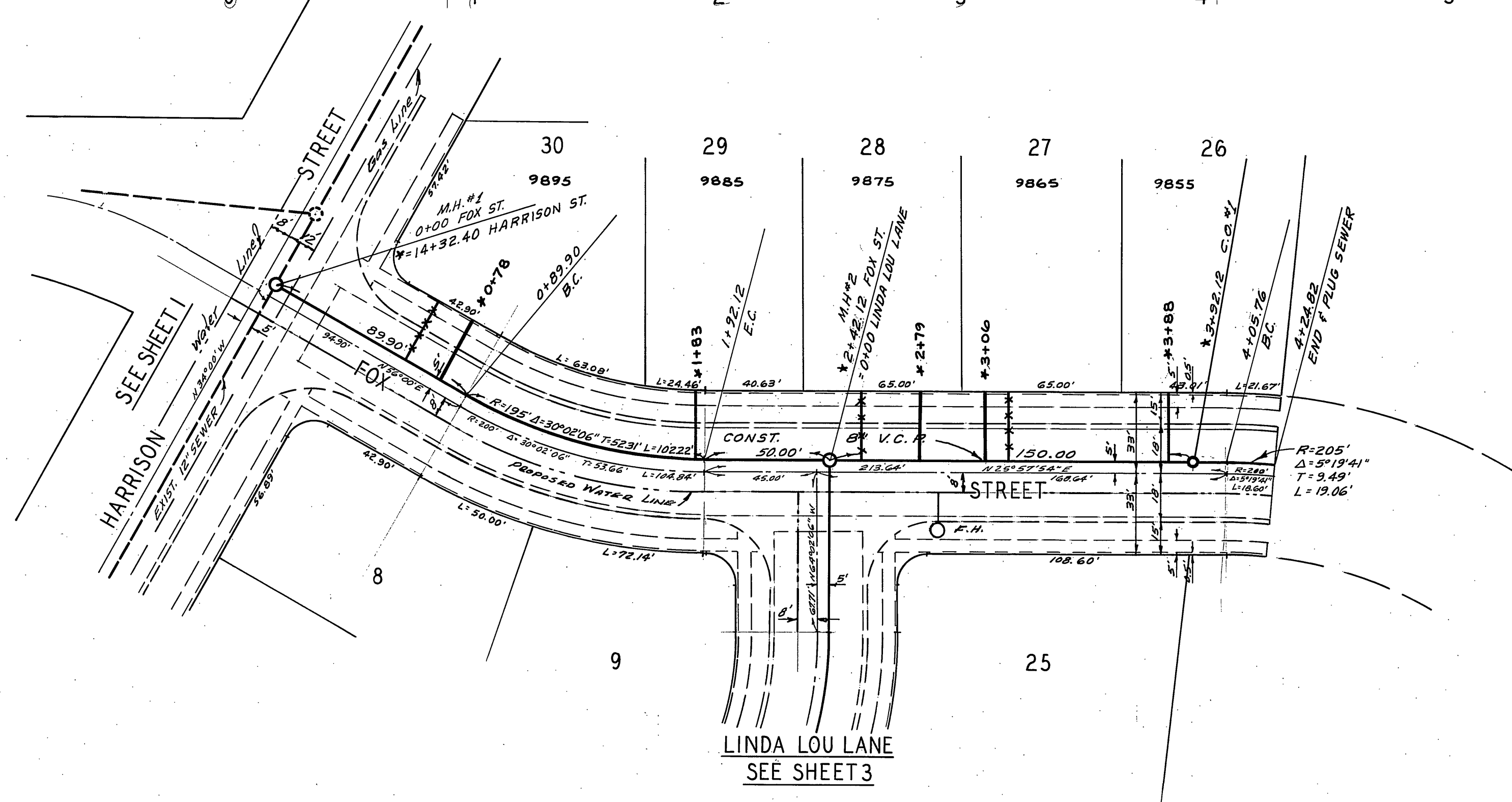
805

795

795



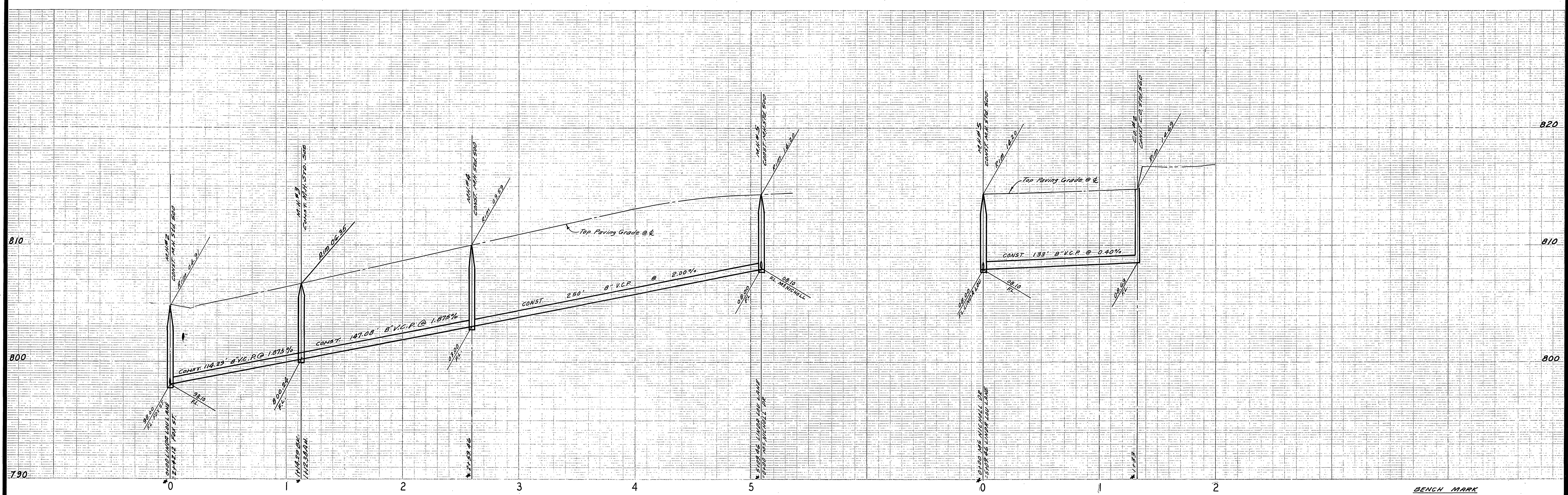
BENCH MARK
 PK nail in land in curb on S'ly side of Fox St.
 6' W. of B.C.R. of Harrison St. Elev. 883.905
 CIR File No. R-719



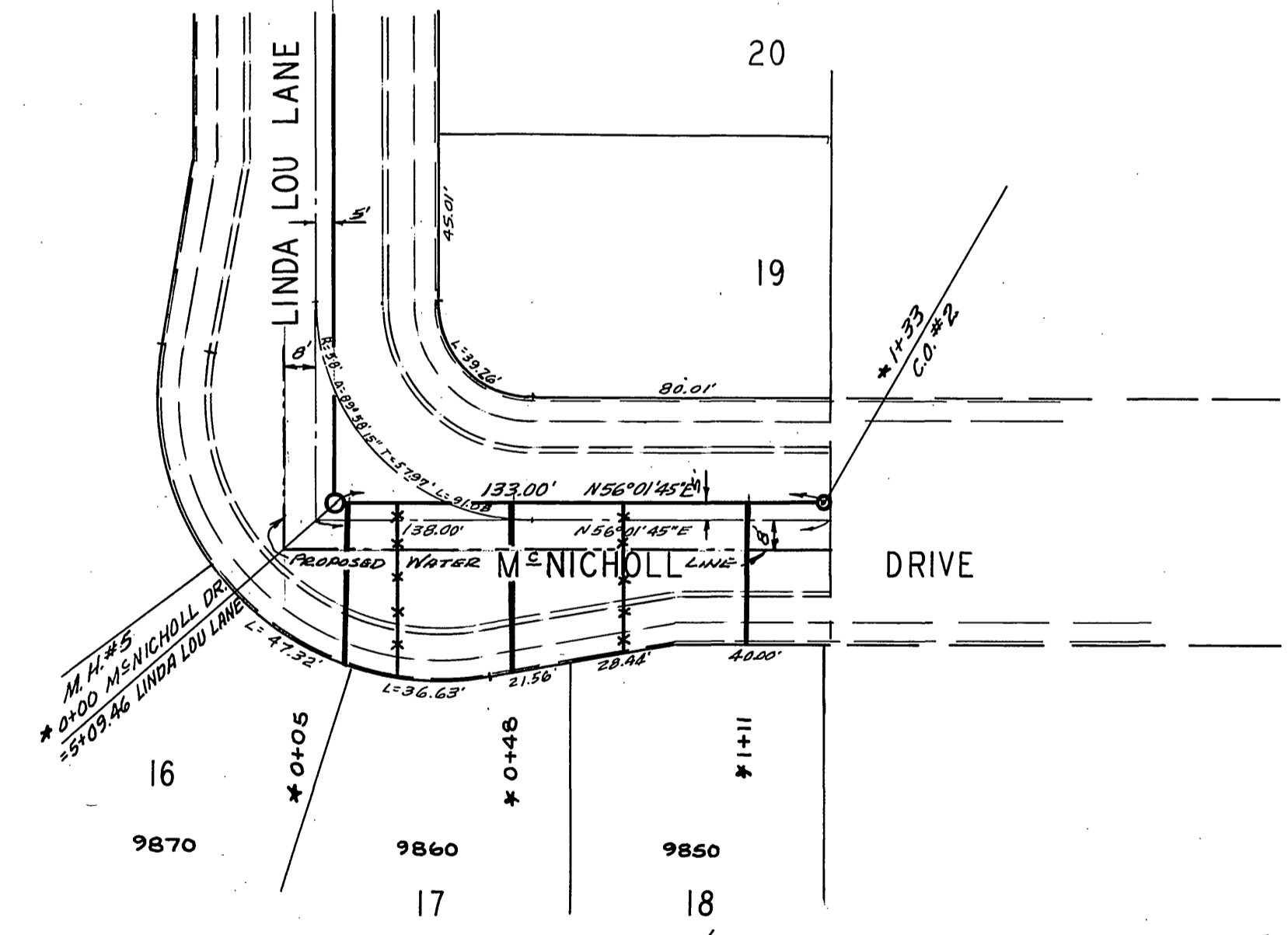
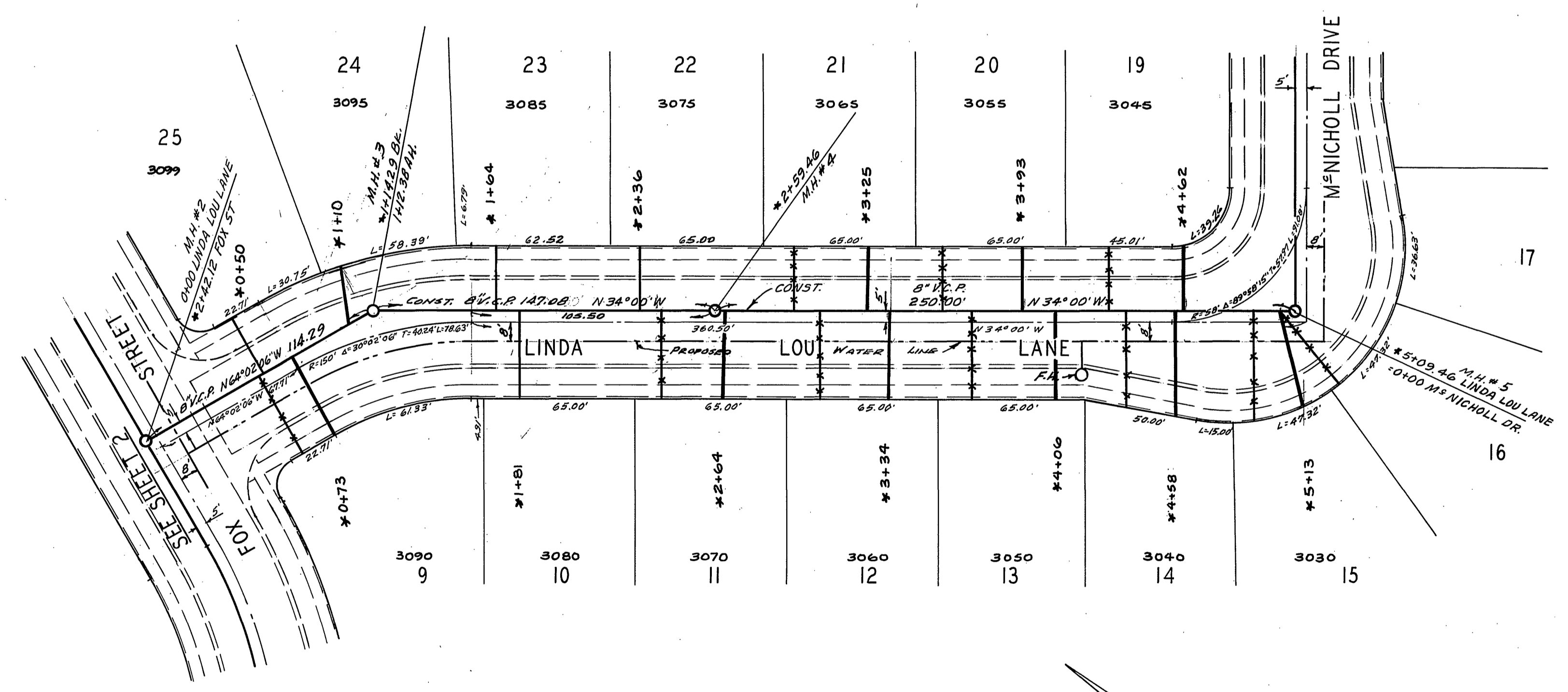
* AS BUILT 3-19-69 BE.

Approved by
[Signature] 2/12/68
 R.C.E. 3876
 W.D. 67-418 - Woodhaven Dev. F.B. 1002 710

CITY OF RIVERSIDE, CALIFORNIA DEPARTMENT OF PUBLIC WORKS		SEWER PLAN & PROFILE FOX STREET TRACT NO 3739	PROJECT NO. S-731 SHEET 2 OF 3 FILE NO. 67-418-B
APPROVED BY OFFICE ENGINEER PARK DEPARTMENT TRAFFIC DIVISION ASSISTANT CITY ENG.	BY <i>[Signature]</i> DATE 1/14/68	APPROVED BY <i>[Signature]</i> DIRECTOR OF PUBLIC WORKS DATE 1/14/68	HORIZ. SCALE: 1" = 40' VERT. SCALE: 1" = 4'
DESIGNED BY: BEL DRAWN BY: BEL CHECKED BY: BEL	REVISIONS APPR. DATE		



BENCH MARK
 PK nail in lead in curb on Sly side of Fox St.
 6' W. of B.C.R. at Harrison St. Elev. 803.905
 C.R. Plan No. R-713.



* AS BUILT 3-19-69 BE.

Approved By:
Howard A. Orman DATE: 11-1-68
 Chief Utilities Engineer - Water

Approved By:
S. J. Miller DATE: 2/1/69
 R.C.E. 9876
 W.D. 67-418 - WOODHAVEN DEV. - R. 1002/10

CITY OF RIVERSIDE, CALIFORNIA DEPARTMENT OF PUBLIC WORKS		SEWER PLAN & PROFILE		PROJECT NO.
LINDA LOU LANE & M ^e NICHOLL DRIVE TRACT NO. 3739		S-731		SHEET 3 OF 3
APPROVED BY: <i>[Signature]</i> DATE: 11/1/68 OFFICE ENGINEER TRAFFIC DIVISION ASSISTANT CITY ENGINEER		APPROVED BY: <i>[Signature]</i> DATE: 11/19/68 DIRECTOR OF PUBLIC WORKS		HORIZ. SCALE: 1" = 40' VERT. SCALE: 1" = 4'
DESIGNED BY: BEL. DRAWN BY: BEL. CHECKED BY: [Signature]		FILE NO. 67-418-B		