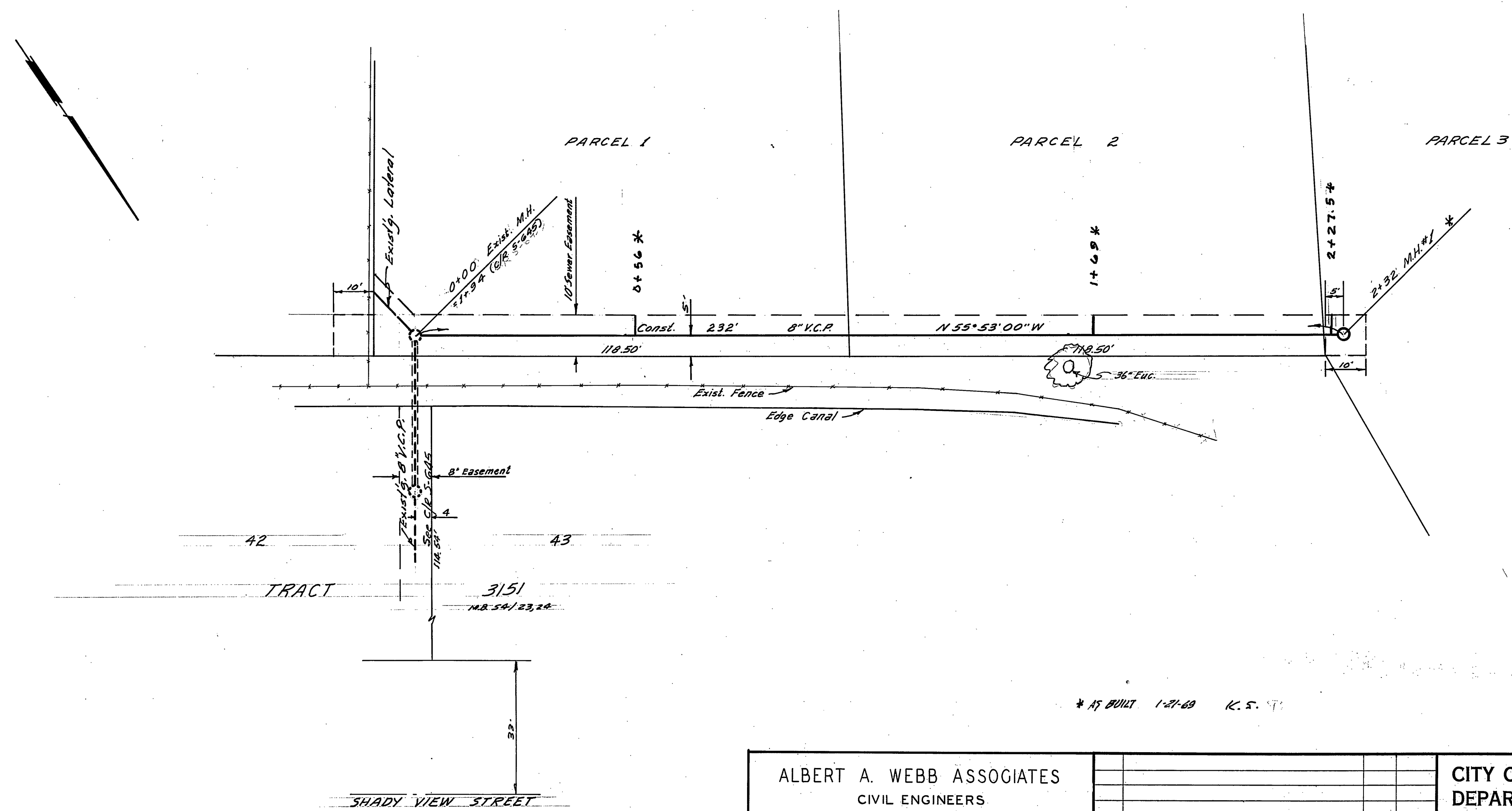


**BENCH MARKS:**  
 1. P.K. nail in curb 3' W of B.C.R. on Nly side Bellevista at Harrison. Elev. 830.005, G.P. P.B. 668/33  
 2. M.E. Corner Cover over Canal A.P. Elev. 806.17, Webb F.B. 1004



- GENERAL NOTES:**
- Construction shall be in accordance with the City of Riverside, Department of Public Works, Standard Specifications No. 461 and Standard Drawings.
  - It shall be the responsibility of the contractor to clear the right of way in accordance with the provisions of the law as it affects each utility including irrigation lines and appurtenances and at no cost to the City.
  - Joints shall be in accordance to A.S.P.M. Specifications C-425-64 Type 1 or 2 or to A.S.P.M. Specifications C-594-64 T (Bore 500') with certain exceptions or modifications on file with the City Engineer.
  - Pipe shall be bedded per Case 1, Standard Drawing No. 452, unless otherwise specified on plan.
  - Location of tees and laterals to be determined at the direction of the sewer.
  - All stubs and laterals to be constructed in accordance with Standard Drawing No. 562. Stubs shall be plugged and capped.

**QUANTITY ESTIMATE**

8" Vitified Clay Pipe	232 L.F.
Manhole Standard No. 500	1 Ea.
4" X 8" Tees	3 Ea.

Approved By *[Signature]* Date 8/15/68  
*Harold L. Orman*  
 Chief Engineer - water

ALBERT A. WEBB ASSOCIATES  
 CIVIL ENGINEERS  
 RIVERSIDE CALIFORNIA  
 APPROVED BY *[Signature]* DATE 7/18/68  
 R.E. No. 2876  
 W.O. 66-176 FOR E.L. YEAGER F.B. 1004

MARK	REVISIONS	APPR.	DATE

CITY OF RIVERSIDE, CALIFORNIA  
 DEPARTMENT OF PUBLIC WORKS  
 APPROVED BY *[Signature]* DATE 11-25-68  
 OFFICE ENGINEER *[Signature]* 7/18/68  
 PARK DEPARTMENT  
 TRAFFIC DIVISION  
 ASSISTANT CITY ENG. *[Signature]* 11-21-68

INDEXED P.R.  
 SEWER PLAN & PROFILE  
**EASEMENT**  
 Along the Northerly line of Parcels 1, 2 and portion of Parcel 3.  
 R/S No. 1028  
 PROJECT NO. S-732  
 SHEET 1 OF 1  
 HORIZ. SCALE: 1" = 20' VERT. SCALE: 1" = 4'  
 FILE NO. 66-176-B