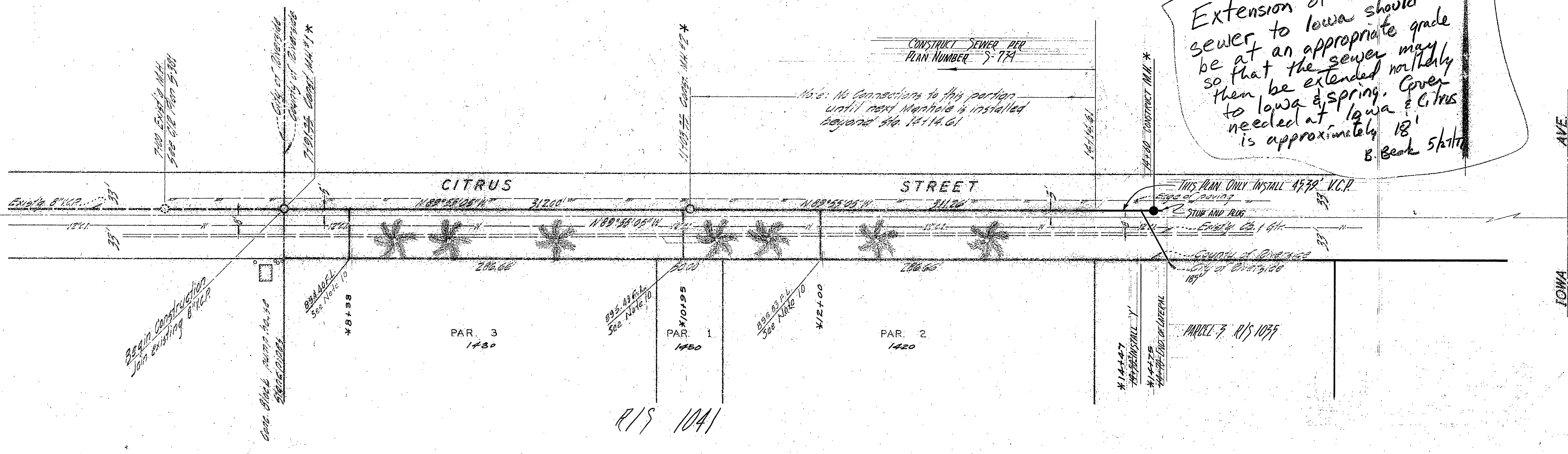


Extension of this sewer to Iowa should be at an appropriate grade so that the sewer may then be extended north to Iowa & Spring. Cover needed at Iowa & Citrus is approximately 18' B. Beck 5/1/77

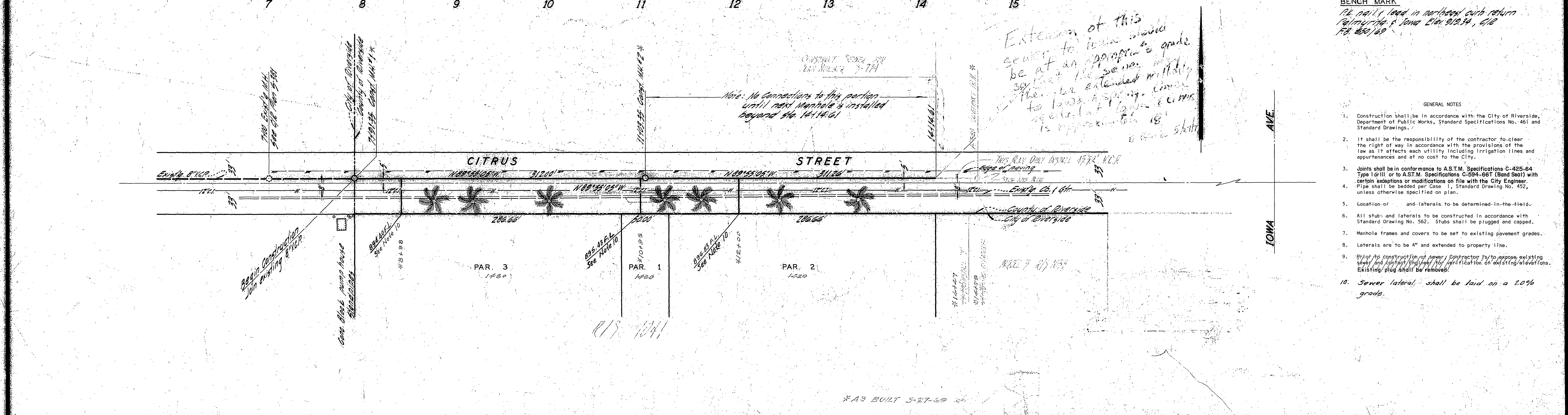
BENCH MARK
 16' nail in northern curb return
 Palmyra & Iowa. Elev. 912.34, G.I.R.
 P.B. 850/68

- GENERAL NOTES
1. Construction shall be in accordance with the City of Riverside, Department of Public Works, Standard Specifications No. 401 and Standard Drawings.
 2. It shall be the responsibility of the contractor to clear the right of way in accordance with the provisions of the law as it affects each utility including irrigation lines and appearances and at no cost to the City.
 3. Joints shall be in conformance to A.S.T.M. Specifications C-425-64 Type I or III or to A.S.T.M. Specifications C-594-68T (Band Seal) with certain exceptions or modifications on file with the City Engineer.
 4. Pipe shall be bedded per Code, Standard Drawing No. 452, unless otherwise specified on plan.
 5. _____
 6. All stubs and laterals to be constructed in accordance with Standard Drawing No. 562. Stubs shall be plugged and capped.
 7. Manhole frames and covers to be set to existing pavement grades.
 8. Laterals are to be 4" and extended to property line.
 9. _____
 10. Sewer lateral shall be laid on a 2.0% grade.



AS BUILT 3-27-69 K

APPROVED BY: CIVIL UTILITIES ENGINEER - WATER		ALBERT A. WEBB ASSOCIATES CIVIL ENGINEERS RIVERSIDE, CALIFORNIA		APPROVED BY: CITY ENGINEER R.E. NO. 9876		CITY OF RIVERSIDE, CALIFORNIA DEPARTMENT OF PUBLIC WORKS		SEWER PLAN AND PROFILE CITRUS STREET SEWER EXTENSION		PROJECT NO. S-733	
DATE: 11-2-68		DATE: 10/19/68		DATE: 11-27-68		DATE: 11-27-68		R/S 1055 PARCEL 7		SHEET 1 of 1	
DESIGNED BY: R.E.		DRAWN BY: R.E.		CHECKED BY: R.E.		DATE: 11-27-68		HORIZ. SCALE: 1" = 50'		VERT. SCALE: 1" = 5'	
								FILE NO. 68-263			



Extension of this sewer to lower grades be at an appropriate grade so that the sewer there be extended with ability to load a spring. Current depth at 14+00 is approximately 18' to 20' depth.

BENCH MARK
 1/2" nail in northern curb return
 Palmsville & Iowa Elev. 910.34, CIP
 FB 880/68

- GENERAL NOTES
- Construction shall be in accordance with the City of Riverside, Department of Public Works, Standard Specifications No. 461 and Standard Drawings.
 - It shall be the responsibility of the contractor to clear the right of way in accordance with the provisions of the law as it affects each utility including irrigation lines and appurtenances and at no cost to the City.
 - Joints shall be in conformance to A.S.T.M. Specifications C-425-64 Type I or II, or to A.S.T.M. Specifications C-594-66T (Bond Seal) with certain exceptions or modifications on file with the City Engineer.
 - Pipe shall be bedded per Case 1, Standard Drawing No. 452, unless otherwise specified on plan.
 - Location of and laterals to be determined in the field.
 - All stubs and laterals to be constructed in accordance with Standard Drawing No. 562. Stubs shall be plugged and capped.
 - Manhole frames and covers to be set to existing pavement grades.
 - Laterals are to be 4" and extended to property line.
 - Upon the construction of sewer, Contractor is to expose existing sewer and catch basins for verification of existing elevations. Existing plug shall be removed.
 - Sewer lateral shall be laid on a 2.0% grade.

APPROVED BY: <i>Howard K. Carson</i> 11-12-68 CHIEF UTILITIES ENGINEER - WATER	ALBERT A. WEBB ASSOCIATES CIVIL ENGINEERS RIVERSIDE, CALIFORNIA APPROVED BY: <i>Edward N. Webb</i> DATE 11/15/68 R.E. No. 9876	CITY OF RIVERSIDE, CALIFORNIA DEPARTMENT OF PUBLIC WORKS APPROVED BY: <i>W. H. [Signature]</i> DATE 11/17/68 OFFICE ENGINEER PARK DEPARTMENT TRAFFIC DIVISION ASSISTANT CITY ENG.	APPROVED BY: <i>[Signature]</i> DATE 11/17/68 DIRECTOR OF PUBLIC WORKS	PROJECT NO. S-733
				SHEET 1 OF 1 FILE NO. 68-263