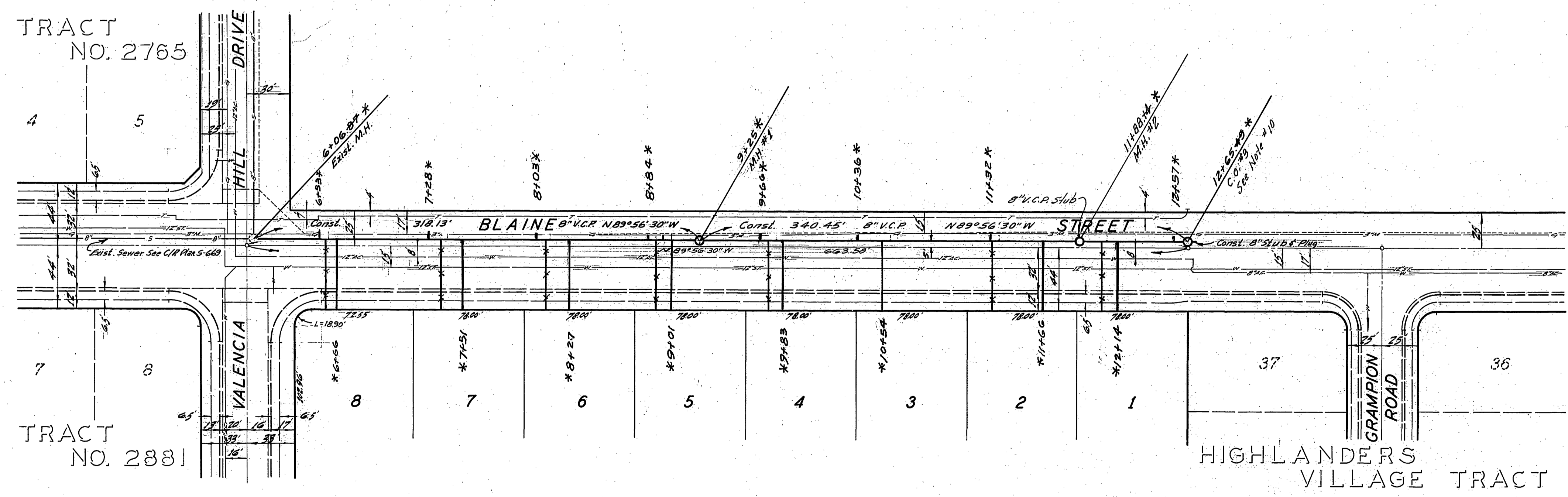


TRACT NO. 2765



TRACT NO. 2881

SEE SHEET 2

HIGHLANDERS VILLAGE TRACT

BENCH MARK
Capped concrete monument at E of Blaine St & Mt. Vernon Ave. Elev. 1215.951 C/R F.B. 705/48

GENERAL NOTES

- Construction shall be in accordance with the City of Riverside, Department of Public Works, Standard Specifications No. 461 and Standard Drawings.
- It shall be the responsibility of the contractor to clear the right of way in accordance with the provisions of the law as it affects each utility including irrigation lines and appearances and at no cost to the City.
- Units shall be in accordance to ASTM Specifications C-405-64 Type I or III or to ASTM Specifications C-594-61 (Sand Seal) with certain exceptions or modifications on file with the City Engineer.
- Pipe shall be bedded per Case 1, Standard Drawing No. 552, unless otherwise specified on plan.
- Location of tees and laterals to be indicated at the direction of the owner.
- All stubs and laterals to be constructed in accordance with Standard Drawing No. 552. Tees shall be plugged and capped (shall be 2' long).
- Manhole frames and covers to be set to existing finished pavement grades.
- Laterals are to be 4" and extended to property line.
- Prior to construction of sewer, Contractor is to expose existing sewer and contact Engineer for verification of existing elevations.
- Contractor shall contact G.R. Bradford (LDS Church), phone 684-428, for cost of constructing Cleanout #3.

- CAUTION -
PACIFIC TELEPHONE
CABLES UNDERGROUND
BEFORE EXCAVATING
CALL COLLECT:

Orange County	714-633-0811	714-547-6606
Riverside County	714-684-0071	714-547-6606
Inyo County	714-684-0071	714-547-6606
San Bernardino County	714-684-0071	714-547-6606
Los Angeles County	213-621-3111	24 HOUR SERVICE
Ventura County	213-621-3111	24 HOUR SERVICE
San Diego County	714-298-0595	714-232-0027

FOR FREE CABLE LOCATING SERVICE

QUANTITY ESTIMATE

8" Vitrified Clay Pipe	1,774 L.F.
4" Vitrified Clay Pipe	1,358 L.F.
4"x8" Tee	40 Ea.
Manhole Standard No. 500	5 Ea.
Cleanout Standard No. 560	3 Ea.
Pavement Replacement	2,659 SF
Saddles	4 Ea.

APPROVED BY: *Harold R. Cream* date: 10/16/68
Chief Utilities Engineer - Water

ALBERT A. WEBB ASSOCIATES
CIVIL ENGINEERS
RIVERSIDE, CALIFORNIA

APPROVED BY: *Albert A. Webb* DATE: 10/2/68
R.E. No. 9876

* AS BUILT 2-24-69 K.S.

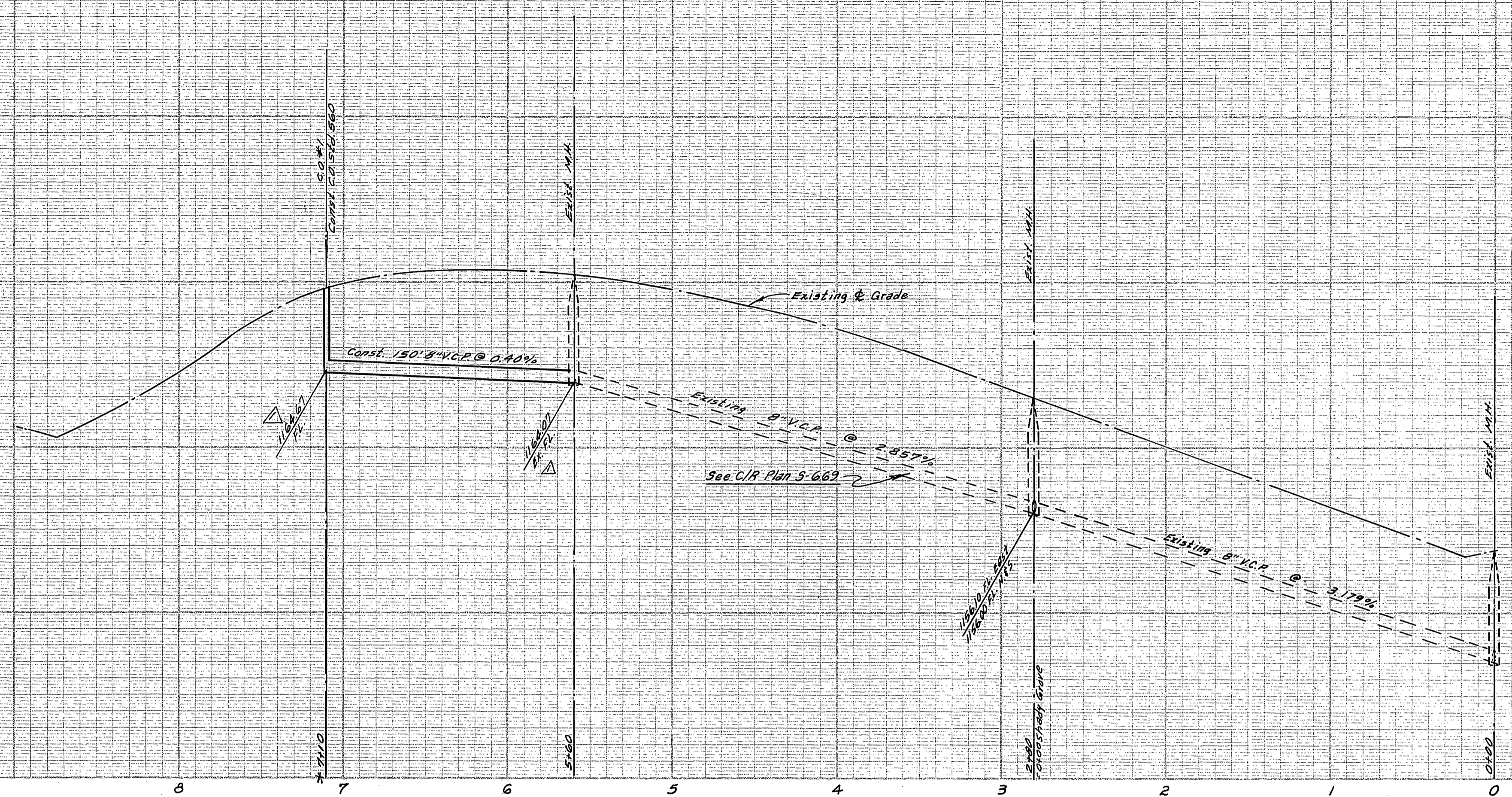
CITY OF RIVERSIDE, CALIFORNIA
DEPARTMENT OF PUBLIC WORKS

APPROVED BY: *Jim A. Smith*
DIRECTOR OF PUBLIC WORKS

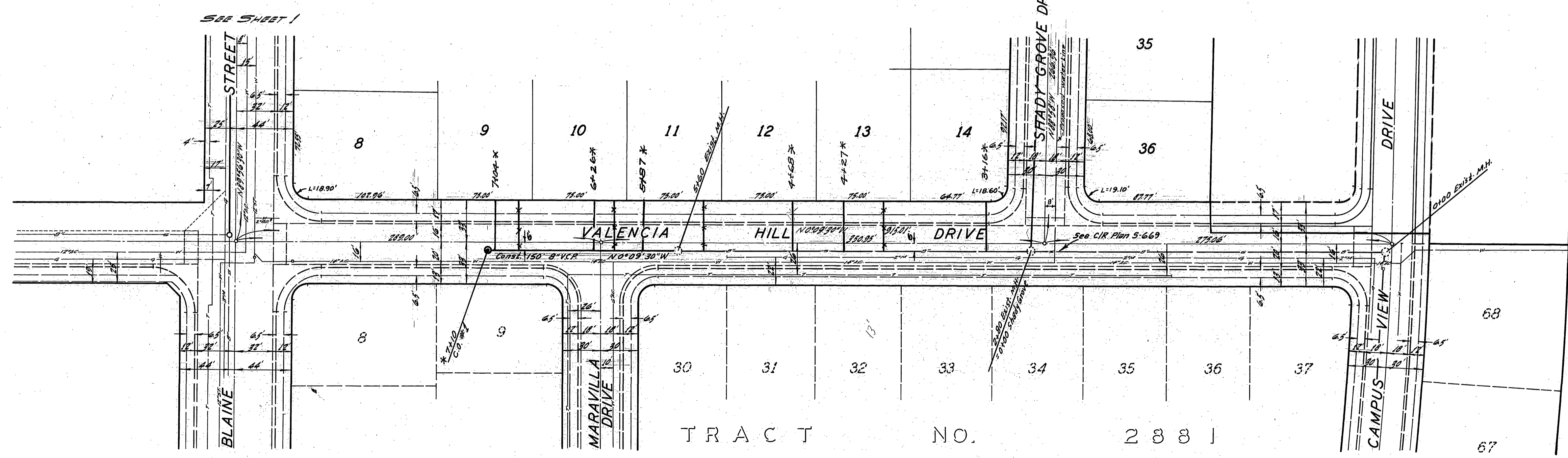
DATE: 11/27/68

SEWER PLAN AND PROFILE
BLAINE STREET
TRACT No. 3770

PROJECT NO. S-737
SHEET 1 OF 4
FILE NO. 68-66-B



BENCH MARK
Capped concrete monument at E of Blaine St 4 MI.
Vernon Ave. Elev. 1215.951 C/R F.B. 705/48



APPROVED BY:
Howard R. Cron Date: 10/1/68
Chief Engineer - Water

* AS BUILT 2-24-69 KT

ALBERT A. WEBB ASSOCIATES
CIVIL ENGINEERS
RIVERSIDE, CALIFORNIA
APPROVED BY: *Ernest H. Wells* DATE: 8/2/68
R.E. No. 9876

CITY OF RIVERSIDE, CALIFORNIA
DEPARTMENT OF PUBLIC WORKS
APPROVED BY: *[Signature]* DATE: 11/27/68
TRAFFIC DIVISION
ASSISTANT CITY ENGINEER

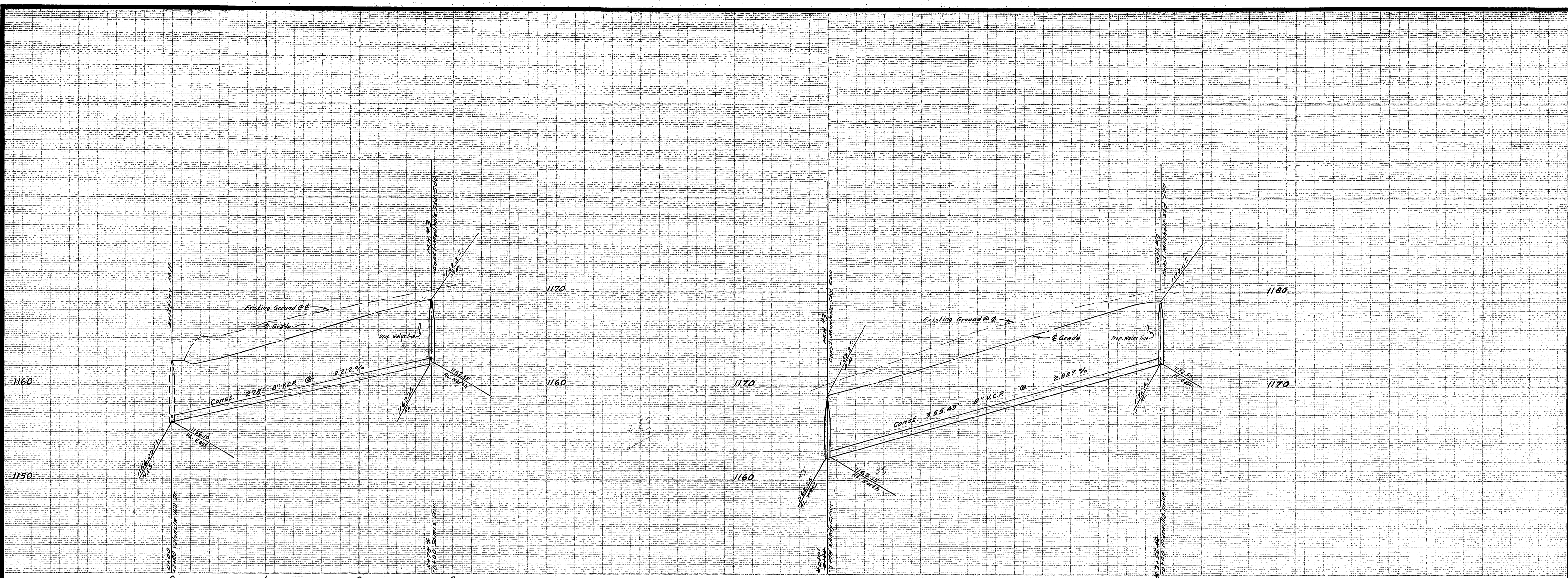
SEWER PLAN AND PROFILE
VALENCIA HILL DRIVE
TRACT No. 3770
PROJECT NO. S-737
SHEET 2 OF 4
DATE 11/27/68
FILE NO. 68-66-B

NOTICE TO CONTRACTOR
The existence and location of any underground structures shown on these plans are based on available records. To the best of our knowledge, existing utilities are shown on these plans. The contractor is required to take all necessary precautions to protect the utility lines shown on these plans and to protect the utility lines not shown on these plans.

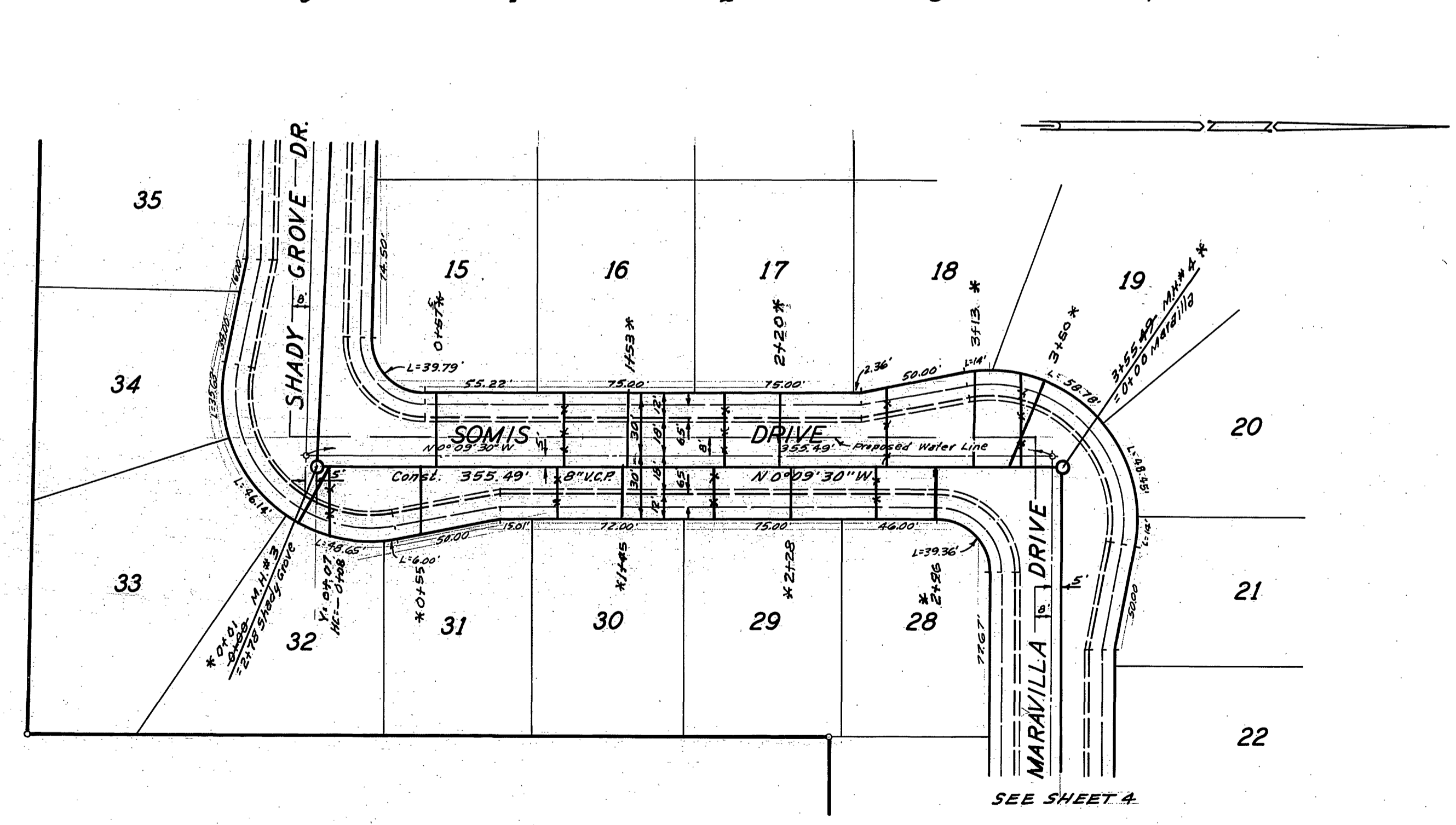
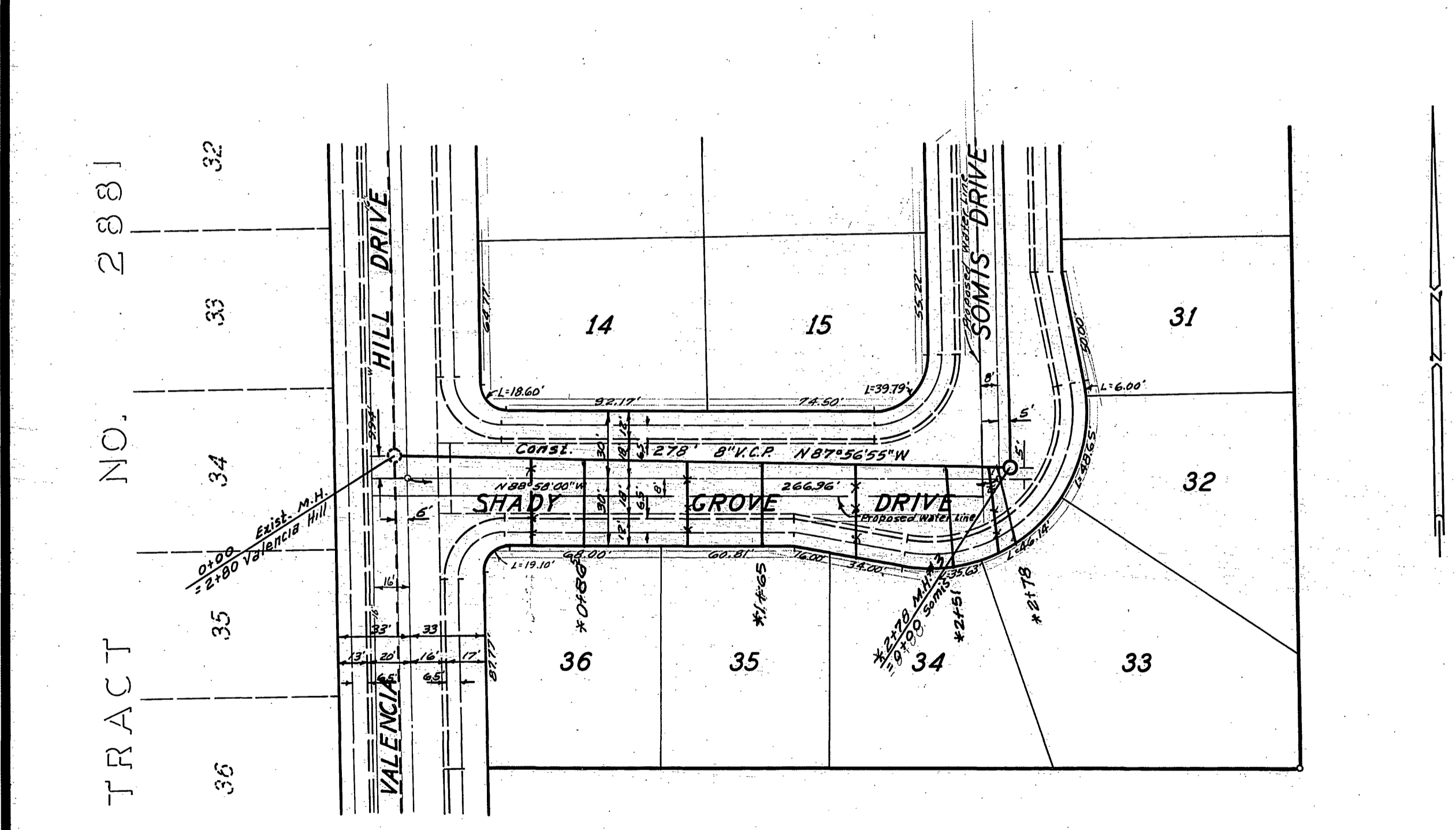
W.O. 68-68 FOR BRATTAIN CONST. Co. F.B. 1002

DESIGNED BY: *BL* DRAWN BY: *BL* CHECKED BY: *REC*

HORIZ. SCALE: 1" = 50' VERT. SCALE: 1" = 5'

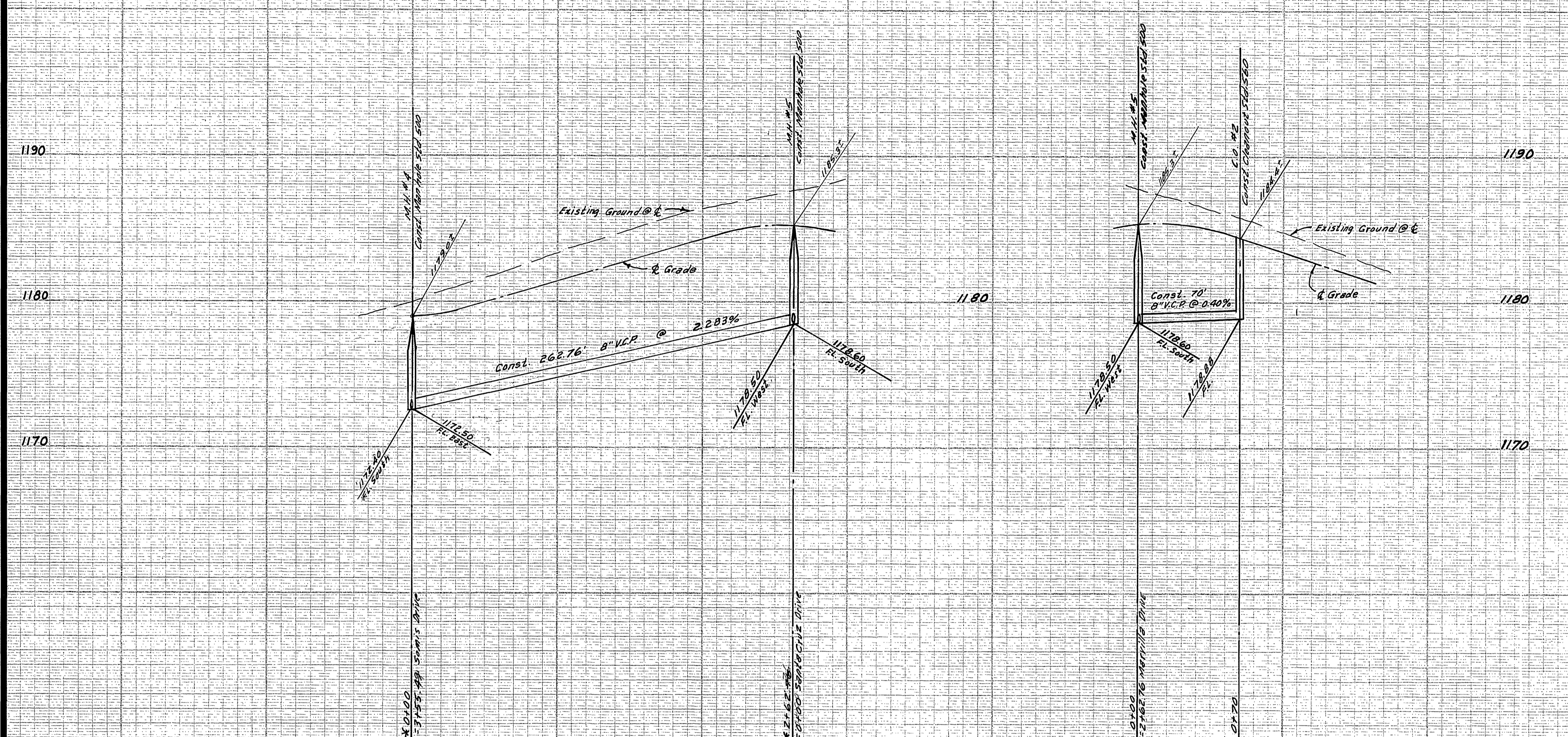


BENCH MARK
Capped concrete monument at E. of Blaine St.
& Mt. Vernon Ave Elev. 1215.951 CTR FB. 745/48

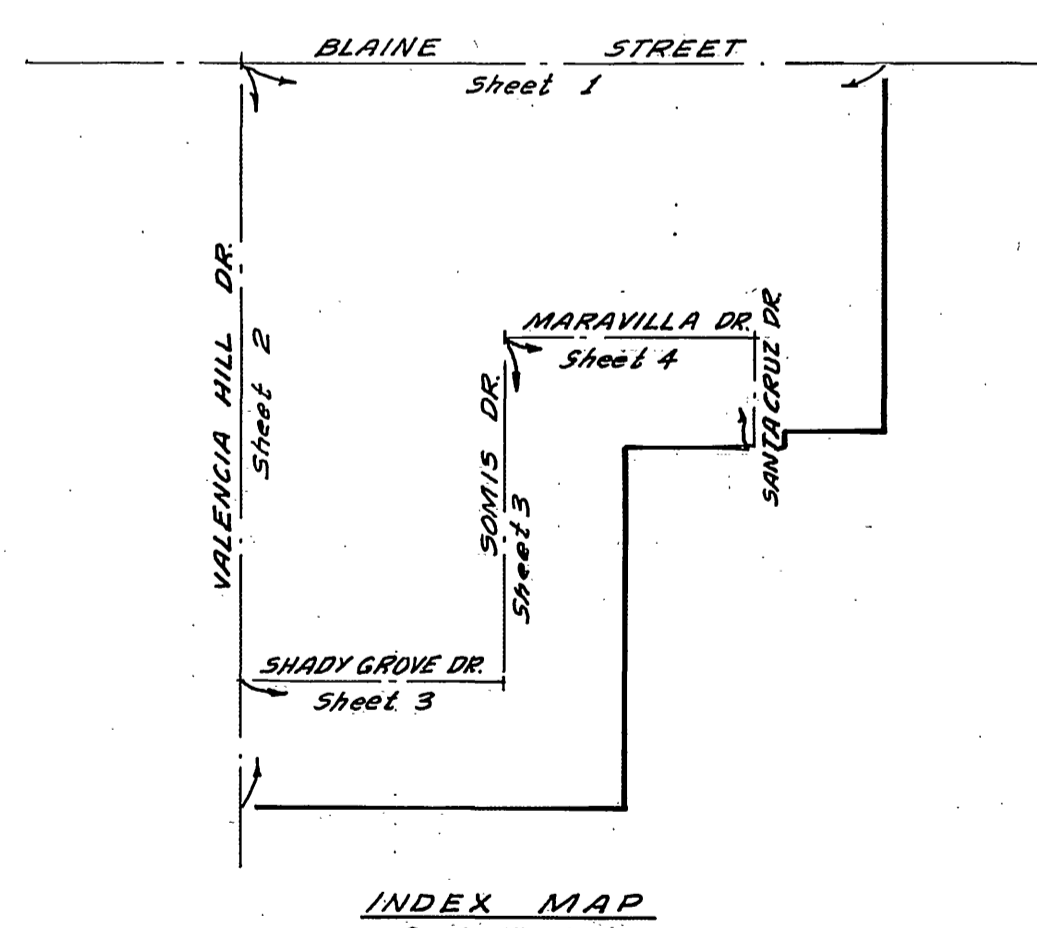
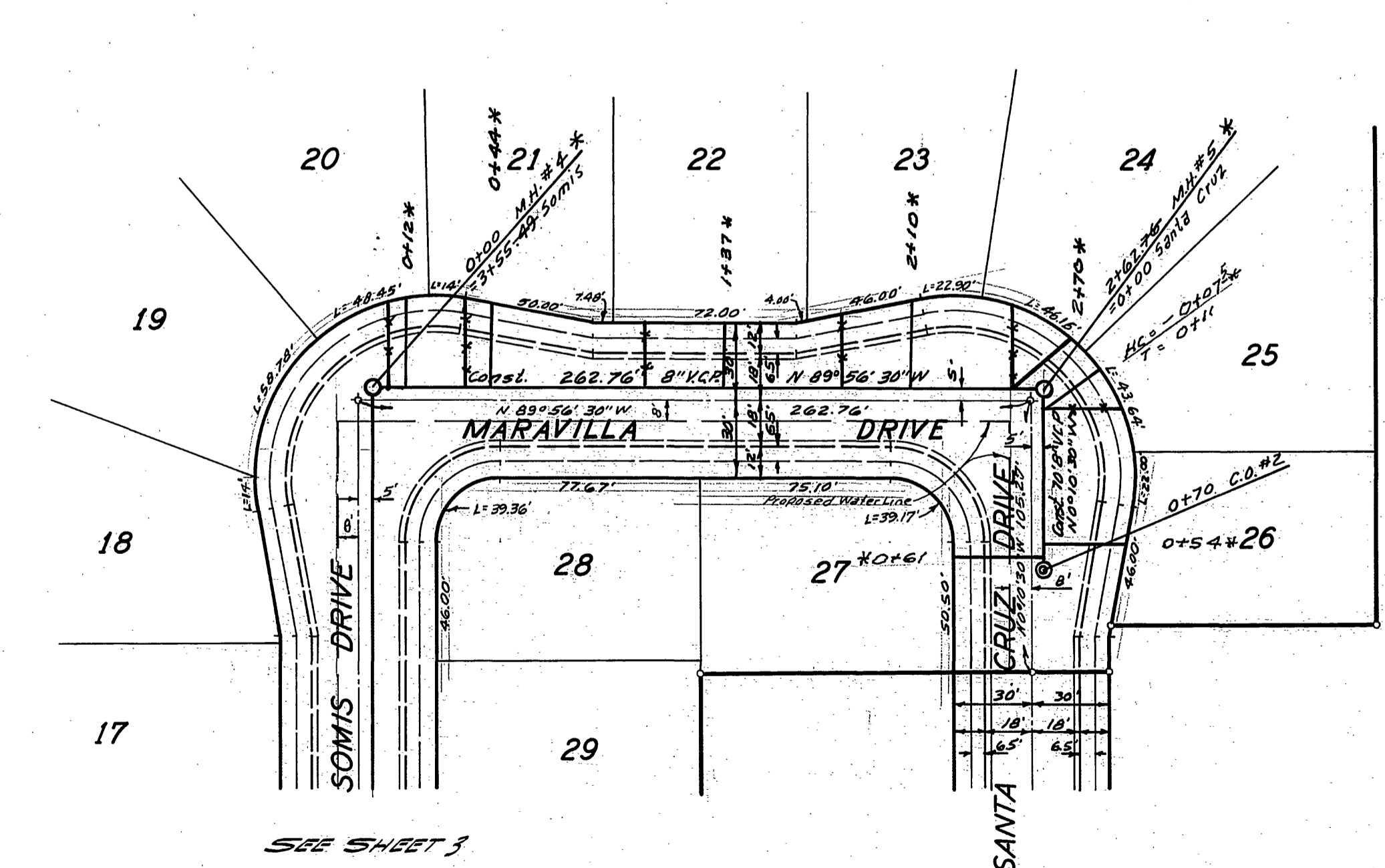


SEE SHEET #

APPROVED BY: <i>Howard R. Cremer</i> Date: 10/11/68 Chief Utilities Engineer - Water		*A5 BUILT 2-25-69 K4	
ALBERT A. WEBB ASSOCIATES CIVIL ENGINEERS RIVERSIDE, CALIFORNIA APPROVED BY: <i>Albert A. Webb</i> DATE: 8/2/68 R.E. No. 9876		CITY OF RIVERSIDE, CALIFORNIA DEPARTMENT OF PUBLIC WORKS APPROVED BY: <i>[Signature]</i> DATE: 11/21/68 OFFICE ENGINEER PARK DEPARTMENT TRAFFIC DIVISION ASSISTANT CITY ENG.	
W.O. 68-68 FOR BRATTAIN CONST. Co. F.B. 1002		DESIGNED BY: <i>BEL</i> DRAWN BY: <i>MBE</i> CHECKED BY: <i>REC/EM</i>	
SEWER PLAN AND PROFILE SHADY GROVE DRIVE & SOMIS DRIVE TRACT No. 3770		PROJECT NO. S-737 SHEET 3 OF 4 FILE NO. 68-66-B	
HORIZ. SCALE: 1" = 50'		VERT. SCALE: 1" = 5'	



BENCH MARK
Capped concrete monument at E of Blaine St.
& MI. Vernon Ave. Elev. 125.951 C.I.R. F.B. 705/48



SEE SHEET 3

* AS BUILT 2-28-69 KF

APPROVED BY: <i>Howard A. Pearson</i> Date: 10/11/68 CIVIL ENGINEER - WATER		CITY OF RIVERSIDE, CALIFORNIA DEPARTMENT OF PUBLIC WORKS		PROJECT NO. S-737
ALBERT A. WEBB ASSOCIATES CIVIL ENGINEERS RIVERSIDE, CALIFORNIA		APPROVED BY: <i>[Signature]</i> DIRECTOR OF PUBLIC WORKS		SHEET 4 OF 4
APPROVED BY: <i>[Signature]</i> DATE: 8/2/68 R.E. No. 9876		ASSISTANT CITY ENG. DATE: 11/27/68		FILE NO. 68-66-B
W.O. 68-68 FOR: BRATTAIN CONST. Co. F.B. 1002		DESIGNED BY: <i>[Signature]</i> DRAWN BY: <i>[Signature]</i> CHECKED BY: <i>[Signature]</i>		HORIZ. SCALE: 1" = 50' VERT. SCALE: 1" = 5'