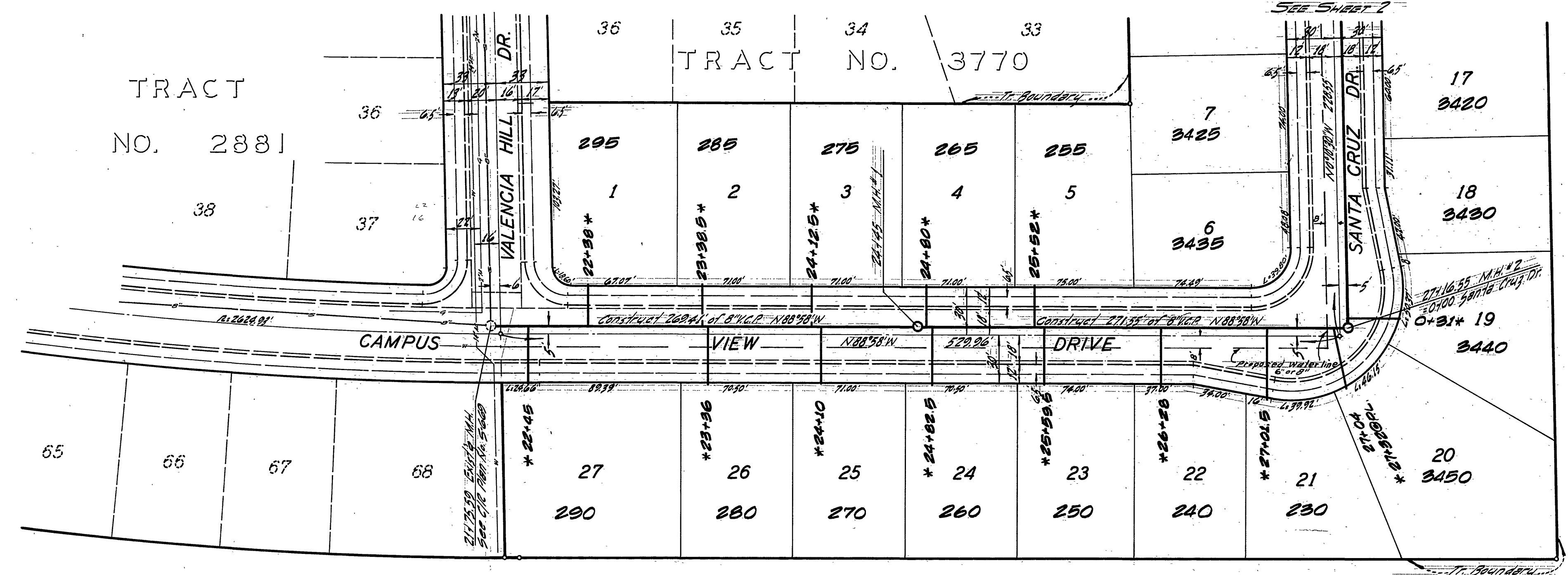


BENCH MARK: Capped concrete monument at E. Blaine St. & Mount Vernon Ave., Elev. 1215.981, C.I.R. E.S. 705/48.



- GENERAL NOTES**
1. Construction shall be in accordance with the City of Riverside, Department of Public Works, Standard Specifications No. 461 and Standard Drawings.
  2. It shall be the responsibility of the contractor to clear the right of way in accordance with the provisions of the law as it affects each utility including irrigation lines and appurtenances and at no cost to the City.
  3. Joints shall be in conformance to A.S.T.M. specifications C-425-66, Type 1 or 2 or to A.S.T.M. specifications C-394-66T (Standard 1) with certain exceptions or modifications on file with the City Engineer.
  4. Pipe shall be bedded per Case 1, Standard Drawing No. 452, unless otherwise specified on plan.
  5. Location of Tees and Laterals to be determined at the direction of the owner.
  6. All slubs and laterals to be in accordance with Standard Drawing No. 562, slubs shall be plugged and capped.
  7. Manhole frames and covers to be set to proposed pavement grade.
  8. Laterals are to be 4" and extended to property line.
  9. Prior to construction of sewer Contractor is to expose existing sewer and contact engineer for verification of existing elevations.

**QUANTITY ESTIMATE**

Manholes - Std. No. 500	4 EA
8" V.C.P. - Main Sewer	1,159 LF
4" V.C.P. - Laterals	850 LF
8" x 4" Tees	27 EA
Pavement Replacement	30 SF

\* CB built 5'13.71' norm

Approved By: *Howard Crason* 12-6-68  
Chief Utility Engineer, Water

ALBERT A. WEBB ASSOCIATES  
CIVIL ENGINEERS  
RIVERSIDE, CALIFORNIA  
APPROVED BY: *Albert A. Webb* DATE 9/12/68  
R.E. No. 9876

MARK	REVISIONS	APPR.	DATE

CITY OF RIVERSIDE, CALIFORNIA  
DEPARTMENT OF PUBLIC WORKS  
APPROVED BY: *[Signature]* DATE 1-6-69  
OFFICE ENGINEER  
PARK DEPARTMENT  
TRAFFIC DIVISION  
ASSISTANT CITY ENGINEER

SEWER PLAN AND PROFILE  
PROJECT NO. S-738  
CAMPUS VIEW DRIVE  
TRACT No. 3769  
SHEET 1 OF 2

FILE NO. 68-65-B

1185

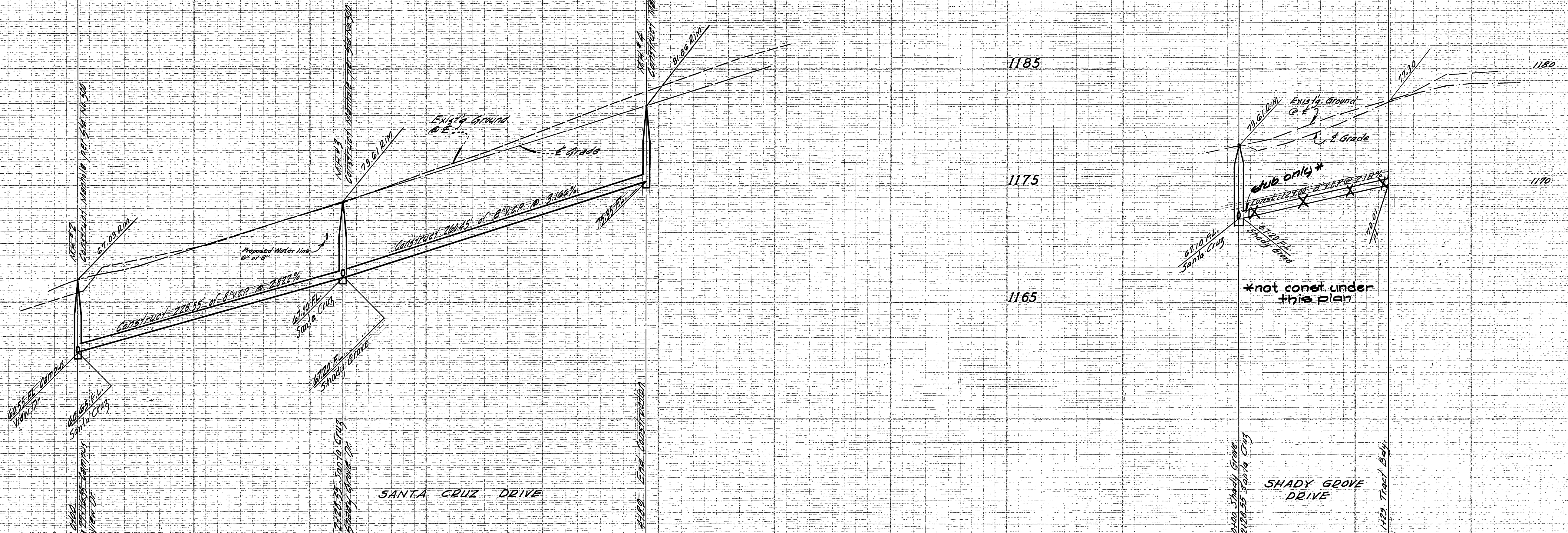
1175

1165

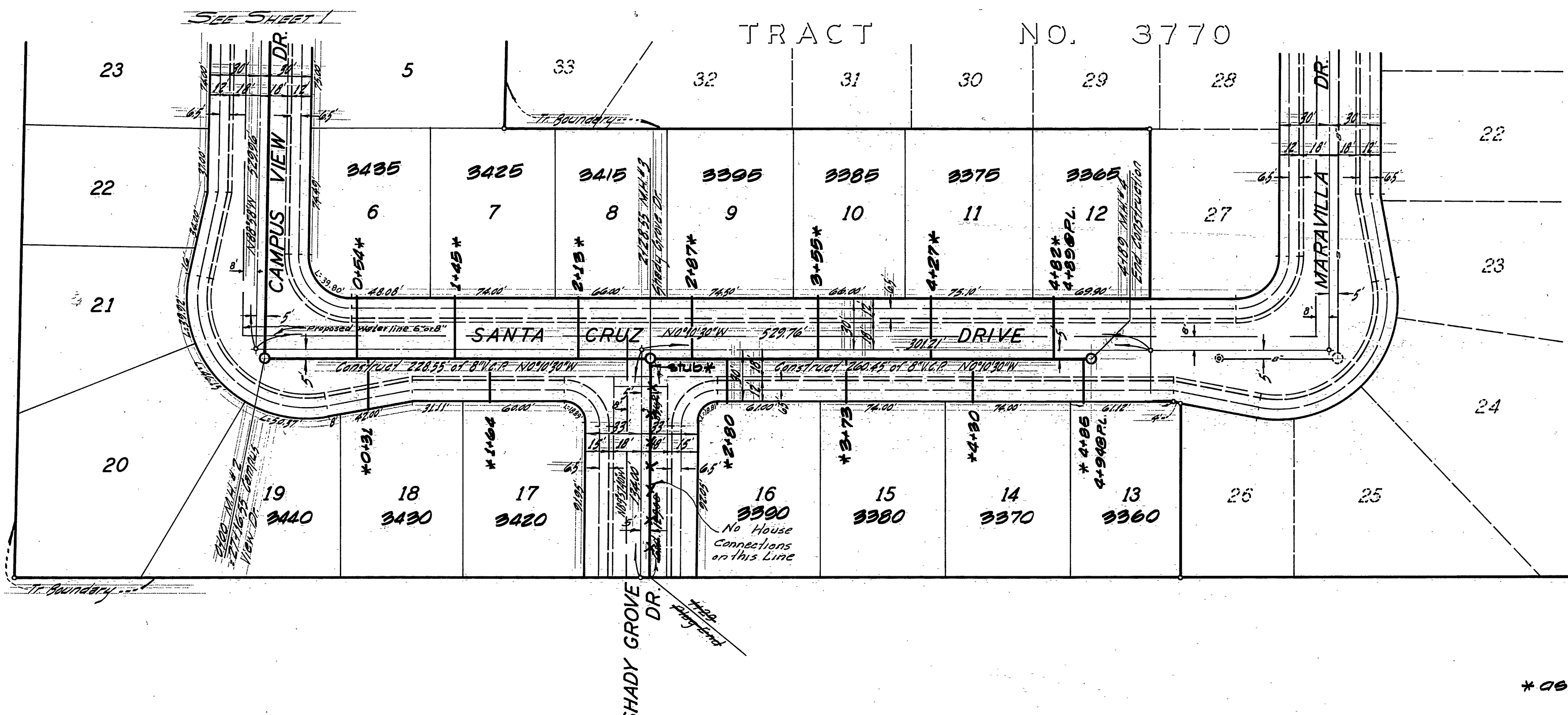
1185

1175

1165



BENCH MARK: Copied concrete monument at E. Blaine St. & Mount Vernon Ave., Elev. 121.891, C.R. 12-728-148



\* as built 5-13-71 norm

Approved By:  
*Howard K. Creamer* 12-6-68  
 Chief Utility Engineer, Water Date

ALBERT A. WEBB ASSOCIATES  
 CIVIL ENGINEERS  
 RIVERSIDE, CALIFORNIA  
 APPROVED BY: *Albert A. Webb* DATE 7/1/68  
 R.E. No. 9876

MARK	REVISIONS	APPR.	DATE

CITY OF RIVERSIDE, CALIFORNIA  
 DEPARTMENT OF PUBLIC WORKS  
 APPROVED BY: *[Signature]* DATE 12/1/68  
 OFFICE ENGINEER  
 PARK DEPARTMENT  
 TRAFFIC DIVISION  
 ASSISTANT CITY ENGINEER

SEWER PLAN AND PROFILE  
 SANTA CRUZ DRIVE  
 TRACT No. 3769

PROJECT NO.  
 S-738  
 SHEET 2 OF 2  
 FILE NO. 68-65-B

HORIZ. SCALE: 1" = 50' VERT. SCALE: 1" = 5'