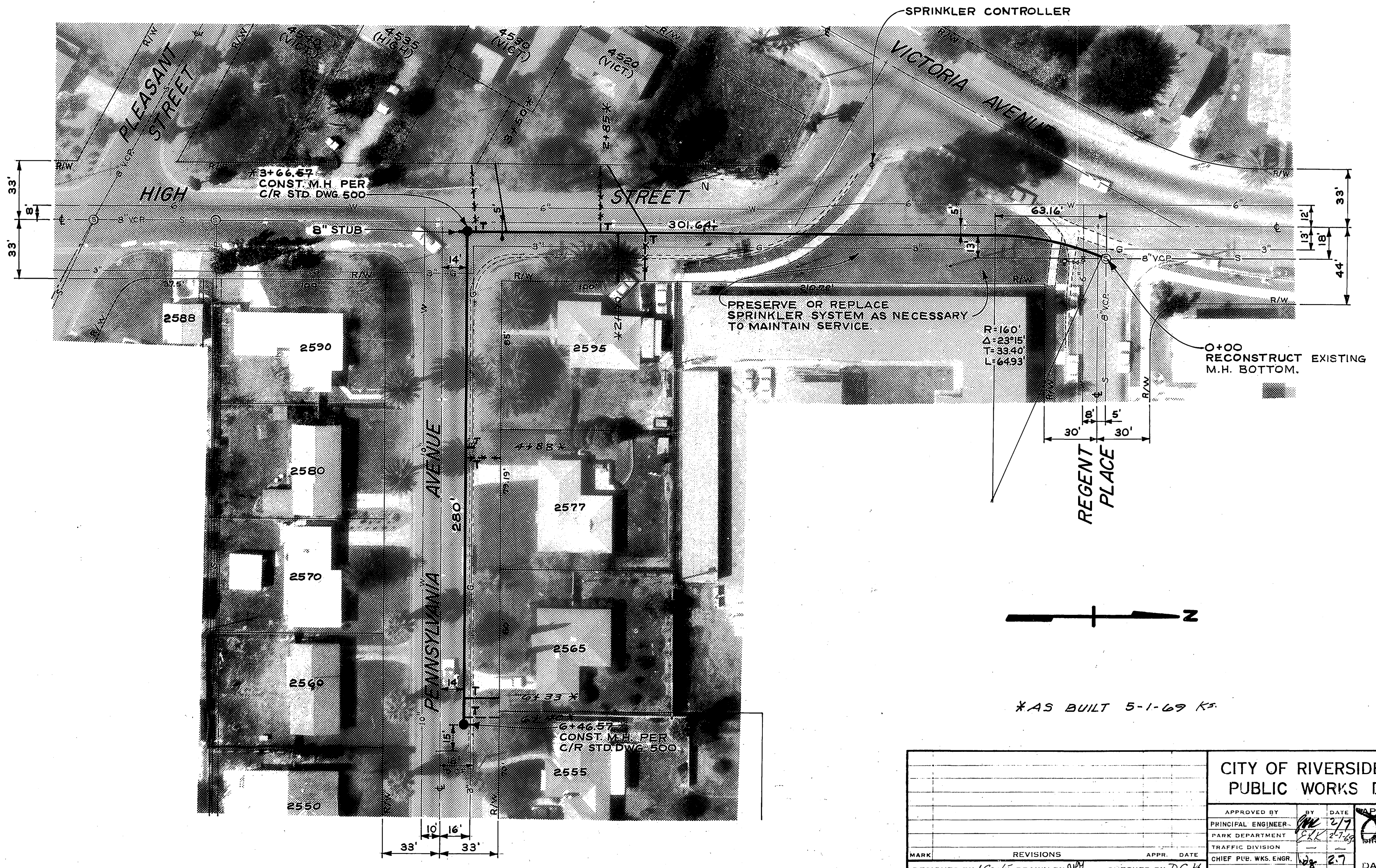


B.M. 906.95 TOP OF F.H. SW COR.
VICTORIA & PLEASANT
F.B. 483/46



- CONSTRUCTION NOTES:**
1. --- INDICATES POSSIBLE LATERAL INSTALLATION AT PROPERTY OWNER'S EXPENSE, SEE SPECIAL PROVISIONS.
 2. PIPE BEDDING INSTALLATION SHALL CONFORM TO C/R STD. DWG. N°452, CASE I
 3. PAVEMENT REPLACEMENT SHALL BE 3\"/>

AS BUILT 5-1-69 K

CITY OF RIVERSIDE, CALIFORNIA PUBLIC WORKS DEPARTMENT		HIGH & PENNSYLVANIA SEWER		ACCOUNT N° 516 DRAWING NUMBER S-739
APPROVED BY PRINCIPAL ENGINEER PARK DEPARTMENT	DATE 12/77	APPROVED BY <i>[Signature]</i> DIRECTOR OF PUBLIC WORKS	Plan and Profile	
TRAFFIC DIVISION	CHIEF P.W. WKS. ENGR.	DATE 2-10-69	SHEET 1 OF 1	
DESIGNED BY <i>[Signature]</i> DRAWN BY <i>[Signature]</i> CHECKED BY <i>[Signature]</i>		HORIZ. SCALE: 1" = 40' VERT. SCALE: 1" = 4'		