

BENCH MARK
 ROUND 4" IRON PIPE FILLED WITH CONCRETE, WITH NAIL IN CENTER, SOUTHWEST CORNER OF SECTION 31, T.28, R.4W, S.8.8, E.1M. (SINCE DESTROYED)
 ELEVATION: 1138.41
 T.8N. LINED AS BASIS OF ELEV. ELEVATION: 1030.40
 R.R. SPIKE IN PP 22209-1 CENTERLINE OF SECTION 31, T.28, R.4W, S.8.8 E.1M.; 300' SOUTHERLY OF ITS INTERSECTION WITH CENTRAL AVENUE
 ELEVATION: 1030.40
 (CITY OF RIVERSIDE FB. 858/23 ELEVATION: 1030.150)

- GENERAL NOTES**
1. ALL MANHOLES TO BE CITY OF RIVERSIDE STANDARD NO. 500, UNLESS OTHERWISE NOTED ON PLAN. MAXIMUM VERTICAL SPACING OF STEPS IN ALL MANHOLES TO BE 15".
 2. ALL CONSTRUCTION SHALL BE IN ACCORDANCE WITH THE STANDARDS AND SPECIFICATIONS NO. 401 OF THE CITY OF RIVERSIDE DEPARTMENT OF PUBLIC WORKS. PIPE SHALL BE EMBEDDED PER CASE I, STANDARD DRAWING NO. 452, UNLESS OTHERWISE SPECIFIED ON PLANS.
 3. IT SHALL BE THE RESPONSIBILITY OF THE CONTRACTOR TO CLEAR THE RIGHT OF WAY IN ACCORDANCE WITH THE PROVISIONS OF LAW AS IT AFFECTS EACH UTILITY INCLUDING IRRIGATION LINES AND APPURTENANCES, AND AT NO COST TO THE CITY OF RIVERSIDE.
 4. JOINTS SHALL BE IN CONFORMANCE TO A.S.T.M. SPECIFICATIONS C-458-64, TYPE I OR II, OR TO A.S.T.M. SPECIFICATIONS C-594-66T (BAND SEAL) WITH CERTAIN EXCEPTIONS OR MODIFICATIONS ON FILE WITH THE CITY ENGINEER.
 5. LOCATION OF ALL TEES AND LATERALS TO BE LOCATED IN THE FIELD NOTES APPROPRIATE STATIONING ON PLANS. AVOID CONFLICT WITH PROPOSED AND/OR EXISTING FACILITIES.
 6. ALL STUBS AND LATERALS TO BE CONSTRUCTED IN ACCORDANCE WITH STANDARD DRAWING NO. 502.
 7. LATERALS SHALL BE 4" V.C.P. AND EXTENDED TO PROPERTY LINE.
 8. ALL STUBS AT MANHOLES SHALL BE 2' LONG AND PLUGGED.

APPROVED BY:
 Howard L. Orman
 CHIEF UTILITY ENGINEER
 12-13-68
 DATE

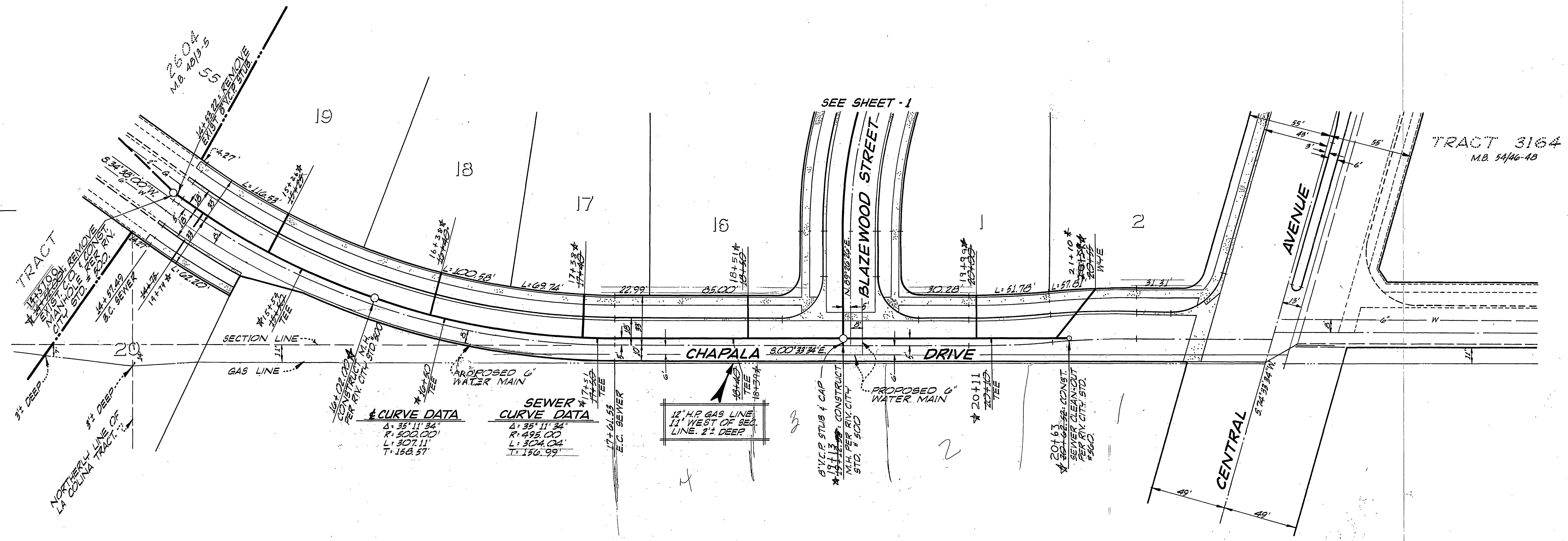
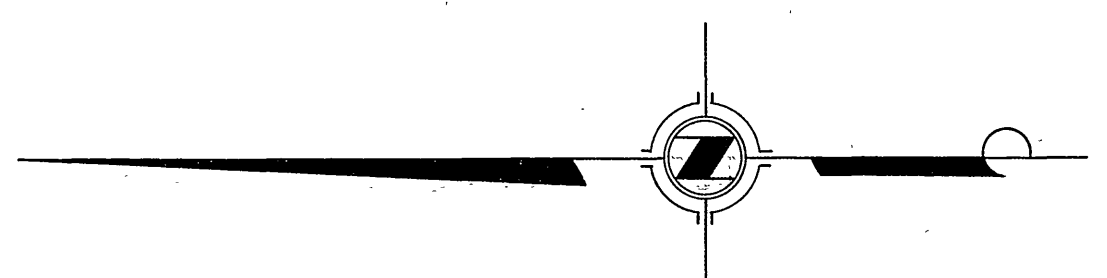
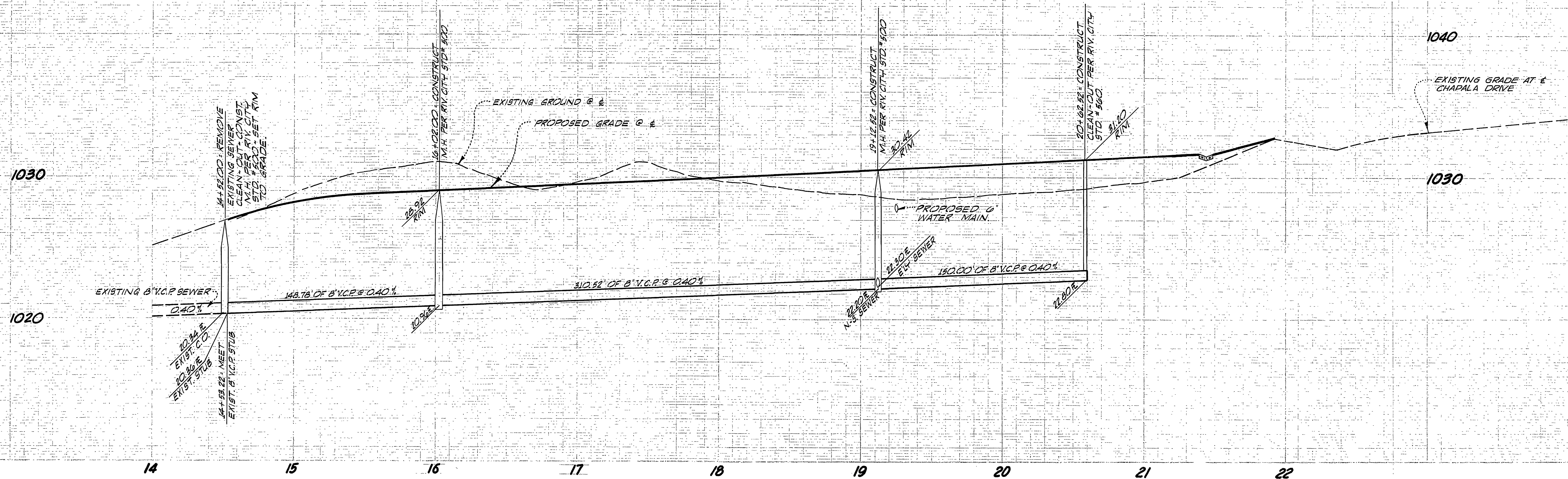
J.F. DAVIDSON ASSOCIATES
 CIVIL ENGINEERS SURVEYORS PLANNERS
 RIVERSIDE CALIFORNIA
 APPROVED BY: *John W. Conly* 12-20-68
 R.C.E. 17550 DATE

NO.	REVISIONS	APPR. DATE

CITY OF RIVERSIDE, CALIFORNIA
 DEPARTMENT OF PUBLIC WORKS
 APPROVED BY: *[Signature]*
 OFFICE ENGINEER
 PARK DEPARTMENT
 TRAFFIC DIVISION
 ASSISTANT CITY ENGINEER
 DATE: 2-10-49

SEWER PLAN & PROFILE
 TRACT 3344
BLAZEWOOD STREET
 CHAPALA DR. TO 100' W. LYNDHURST DR.

PROJECT NO.
S-740
 SHEET **1** OF **2**
 FILE NO. 2735L



AS BUILT PLANS 7-9-69 BARRY M.

APPROVED BY:
Howard J. O'Connell
 CHIEF UTILITY ENGINEER
 12-13-68
 DATE

J. F. DAVIDSON ASSOCIATES
 CIVIL ENGINEERS SURVEYORS PLANNERS
 RIVERSIDE CALIFORNIA
 APPROVED BY *John W. Coffey* 12-20-68
 R.C.E. 17550 DATE

MARK REVISIONS APPR. DATE
 DESIGNED BY *BOO* DRAWN BY *STEVE* CHECKED BY *BOO*

CITY OF RIVERSIDE, CALIFORNIA
 DEPARTMENT OF PUBLIC WORKS
 APPROVED BY *[Signature]*
 OFFICE ENGINEER DATE 12/23/68
 PARK DEPARTMENT
 TRAFFIC DIVISION
 ASSISTANT CITY ENGINEER DATE 12/23/68

SEWER PLAN & PROFILE
 TRACT 3844
 CHAPALA DRIVE
 STA. 14+52.00 THRU STA. 20+02.52
 HORIZ. SCALE: 1" = 40'
 VERT. SCALE: 1" = 4'

PROJECT NO. S-740
 SHEET 2 OF 2
 FILE NO. 2735L