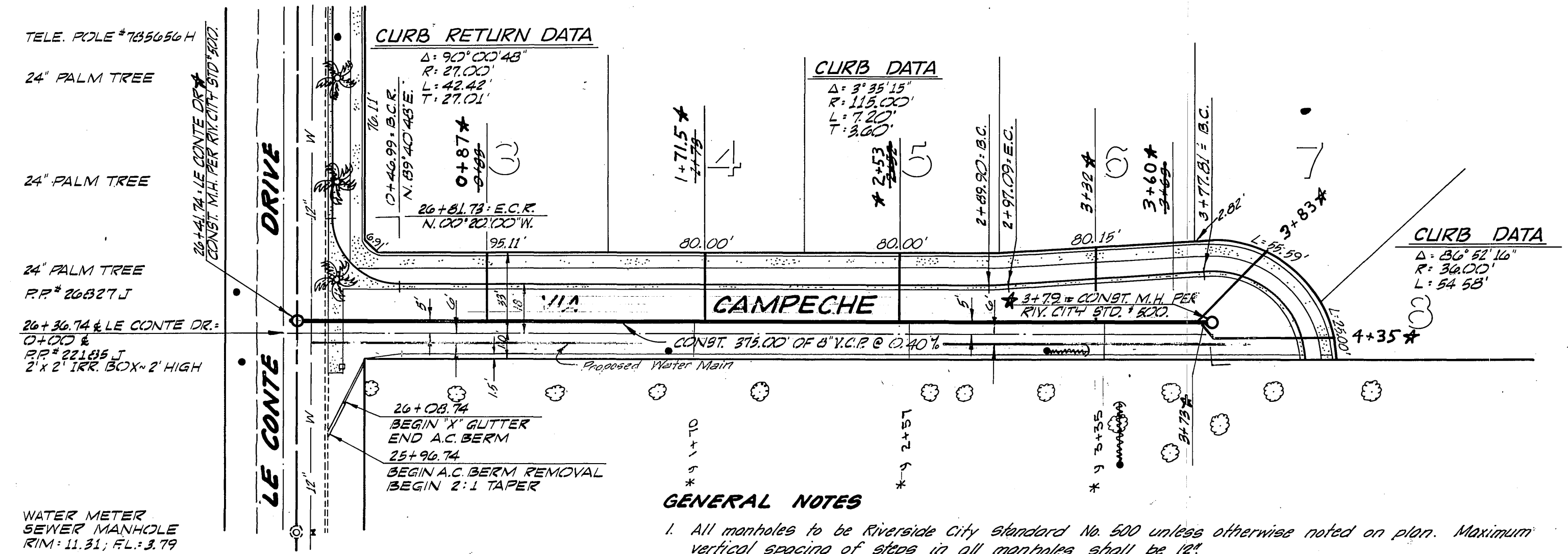
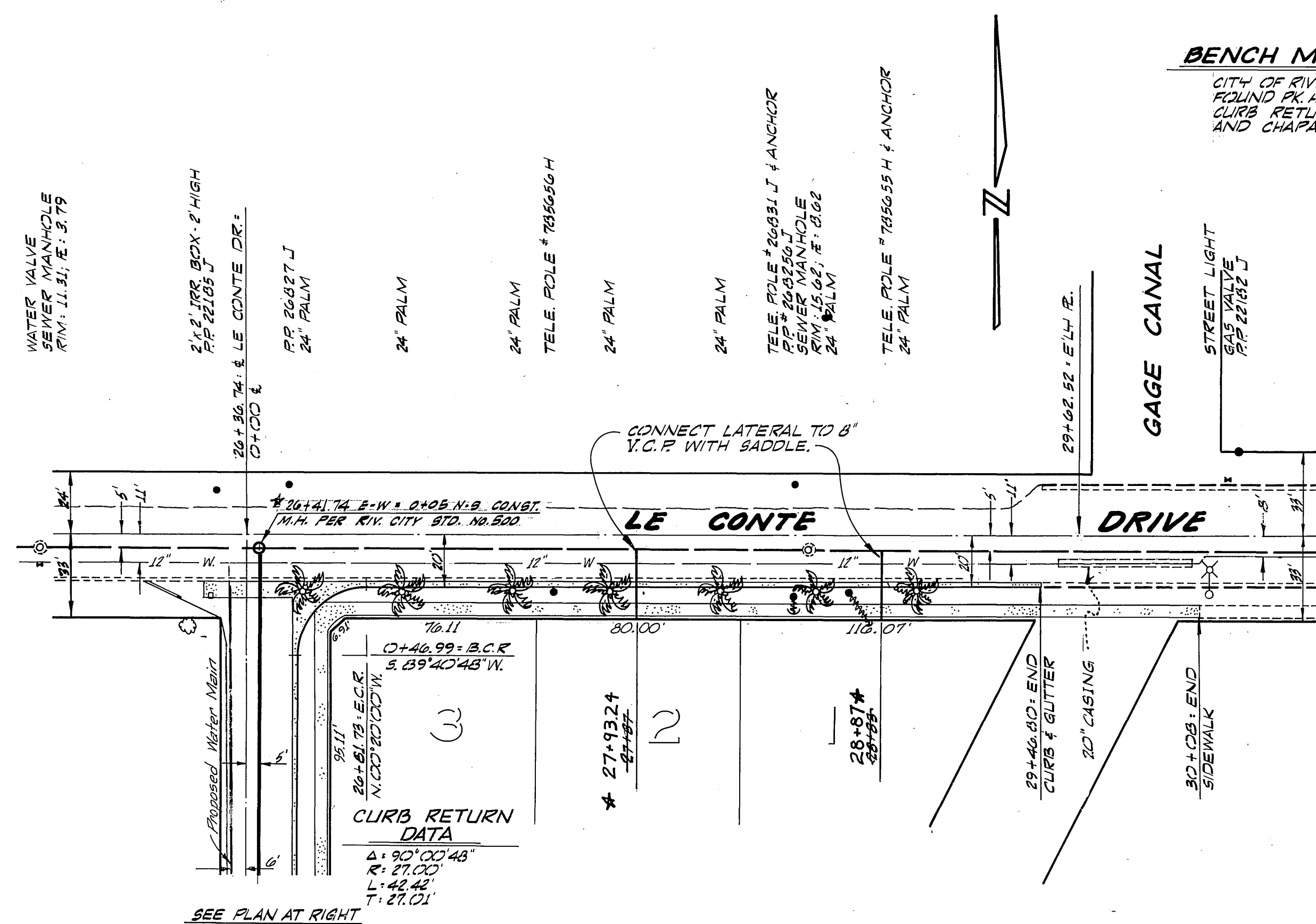


BENCH MARK
 CITY OF RIVERSIDE B.M. 'CHAPALA';
 FOUND PK AT B.C.R. OF THE SW
 CURB RETURN OF LE CONTE DR.
 AND CHAPALA DR. - F.B. N/64.
 ELEV. = 1020.431



GENERAL NOTES

1. All manholes to be Riverside City standard No. 500 unless otherwise noted on plan. Maximum vertical spacing of steps in all manholes shall be 12\"/>

J.F. DAVIDSON ASSOCIATES
 CIVIL ENGINEERS - SURVEYORS - PLANNERS
 RIVERSIDE - CALIFORNIA
 APPROVED BY: *John W. Canty* 12-20-68
 R.O.E. #17550 DATE
 W.O. 2029 FOR CAL. FED. R.B. 1000/1-15

APPROVED BY:
Howard A. Crenan 12-13-68
 CHIEF UTILITY ENGINEER DATE

CITY OF RIVERSIDE, CALIFORNIA
DEPARTMENT OF PUBLIC WORKS
 APPROVED BY: *John W. Canty* 12-20-68
 OFFICE ENGINEER
 PARK DEPARTMENT
 TRAFFIC DIVISION
 ASSISTANT CITY ENG. *John W. Canty*
 DATE 12-10-69

TRACT 3843
SEWER PLAN AND PROFILE
LE CONTE DRIVE
VIA CAMPECHE
 HORIZ. SCALE: 1" = 40'
 VERT. SCALE: 1" = 4'

PROJECT NO.
S-741
 SHEET 1 OF 1
 FILE NO. 2735 U