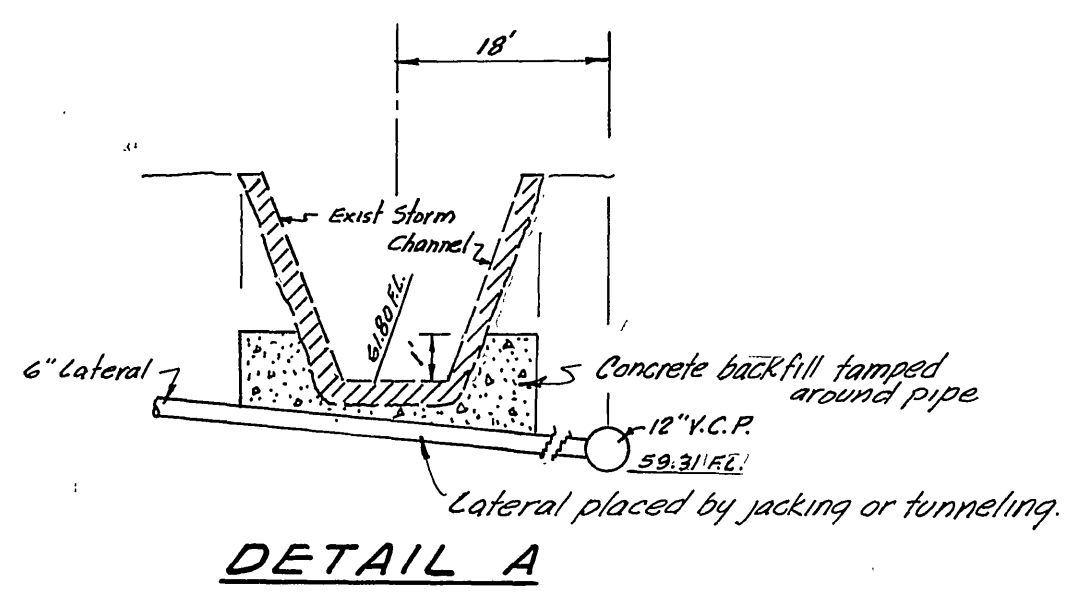
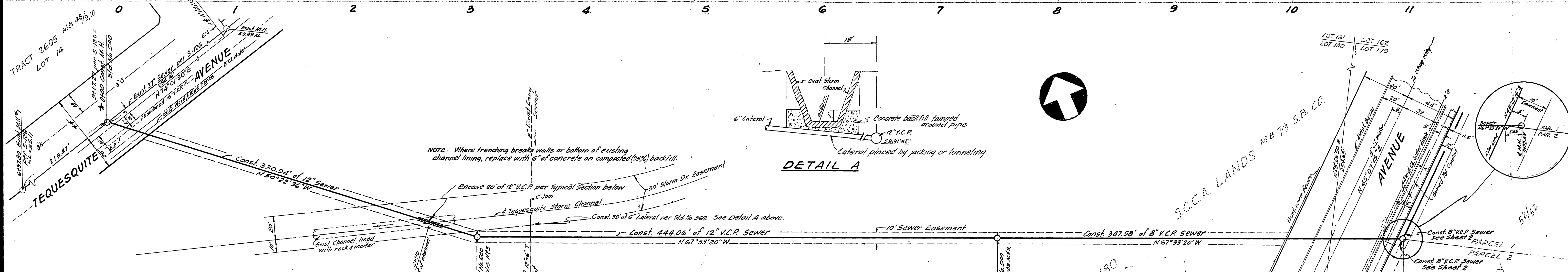
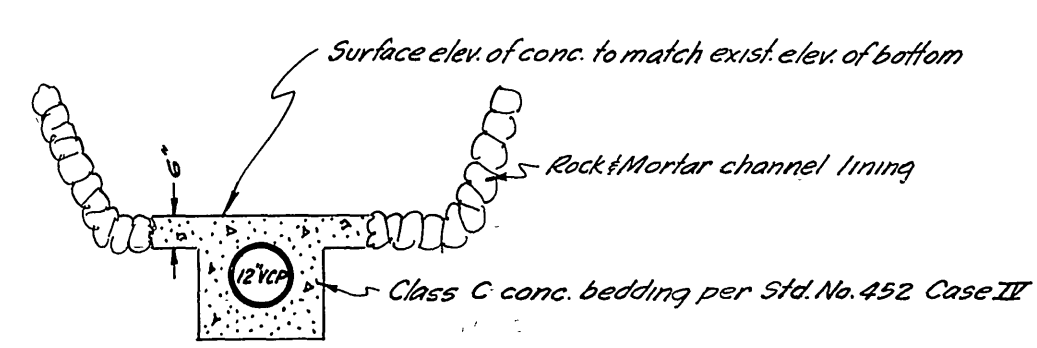


BENCH MARK: Dr. nail in top of storm drain on approx. production of the E of Tequesquite Ave. 65' Ely of the E of Brockton Ave. City F.B. 5-11/9 Elev. 790.51



NOTE: Where trenching breaks walls or bottom of existing channel lining, replace with 6\"/>



GENERAL NOTES

1. Construction shall be in accordance with the City of Riverside Department of Public Works Specifications No. 461 and Standard Dwg's.
2. It shall be the responsibility of the contractor to clear the right of way in accordance with the provisions of the law as it affects each utility, including irrigation lines and appurtenances and at no cost to the City.
3. Location of tees and laterals will be determined in the field by owner or his representative.
4. Precast Manholes may be used after obtaining prior approval of the City Engineer.
5. Joints shall be in conformance with A.S.T.M. Specs. C-425-64 Type I or II or A.S.T.M. Specs. C-594-66T (Band Seal) with certain exceptions or modifications on file with the City Engineer.
6. Prior to trenching, contractor is to uncover exist. 27\"/>

Approved for construction from Sta. 0+00 to 11+17.03 only.
 2/12/62 *William B. Gardner* for Public Works Dept. 786

-CAUTION- PACIFIC TELEPHONE CABLES UNDERGROUND BEFORE EXCAVATING CALL COLLECT-

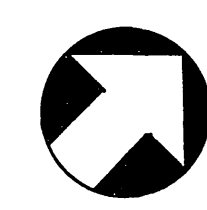
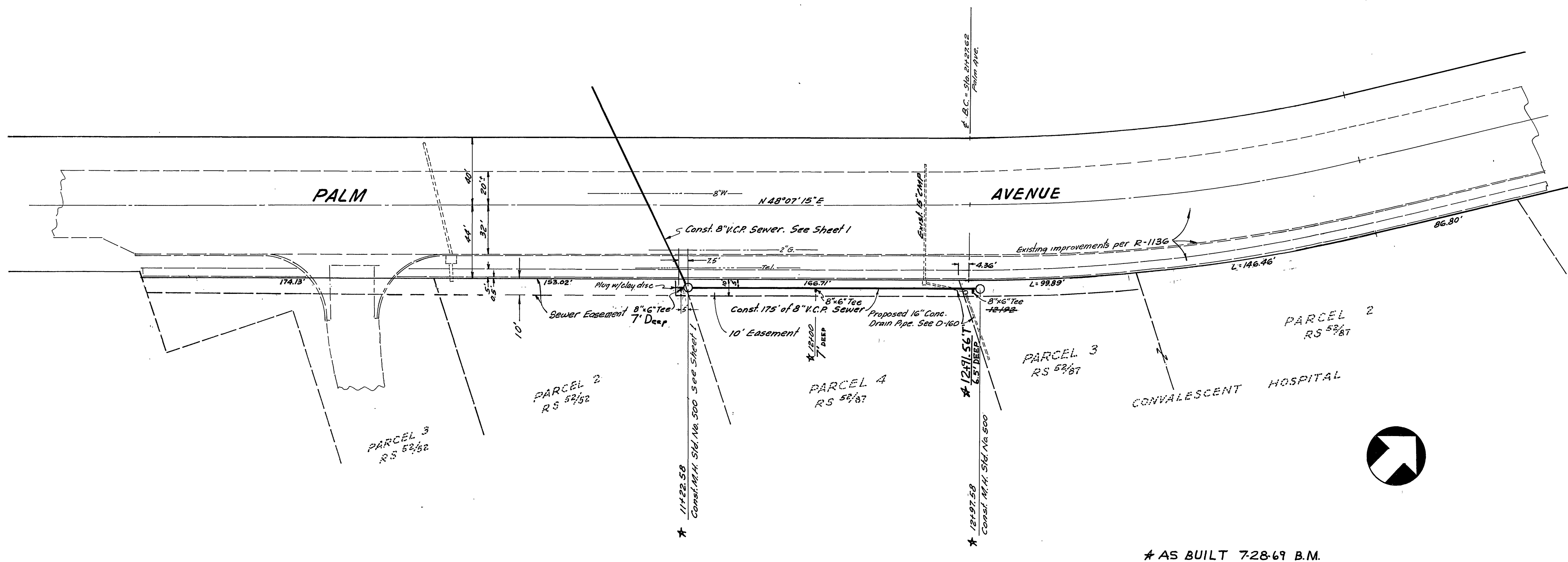
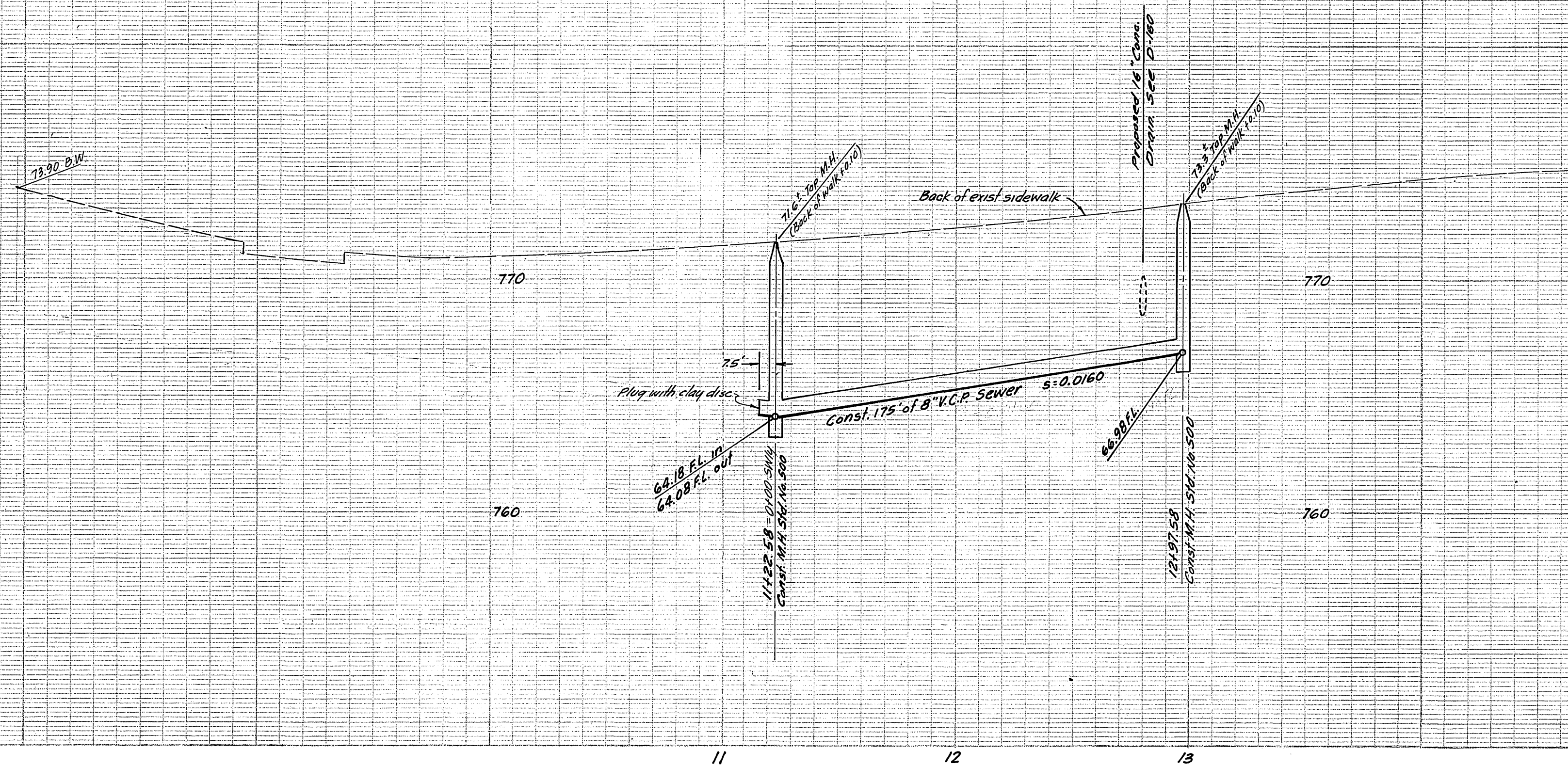
7:30 A.M. to 5 P.M. & Holidays
 After Hours

Orange County	714-633-0911	714-547-6606
Riverside County	714-684-0971	714-547-6606
Inyo County	714-684-0971	714-547-6606
San Bernardino County	714-684-0971	714-547-6606
Los Angeles County	213-621-3111	24 HOUR SERVICE
Ventura County	213-621-3111	24 HOUR SERVICE
San Diego County	714-296-0595	714-232-0027

FOR FREE CABLE LOCATING SERVICE.

* AS BUILT 7-28-69 B.M.

CRAWLEY, HAWKINS & ASSOCIATES ENGINEERS AND SURVEYORS RIVERSIDE 684-9522 APPROVED <i>George O. Crawley</i> DATE 12/2/68 REG. CIVIL ENGINEER No. 9455		CITY OF RIVERSIDE, CALIFORNIA DEPARTMENT OF PUBLIC WORKS APPROVED BY <i>William B. Gardner</i> DATE 2/10/62 OFFICE ENGINEER PARK DEPARTMENT DIRECTOR OF PUBLIC WORKS ASSISTANT CITY ENGINEER		PROJECT NO. S-742 SHEET 1 OF 2
Approved: <i>Howard K. Coxson</i> Date 1-7-69 Chief Utility Engineer - Water	MARK DESIGNED BY <i>GC</i> DRAWN BY <i>GC</i> CHECKED BY <i>GC</i>	REVISIONS APPR. DATE	DATE 2/10/72	HORIZ. SCALE: 1" = 40' VERT. SCALE: 1" = 4' FILE NO. 4141



* AS BUILT 7-28-69 B.M.

-CAUTION-
PACIFIC TELEPHONE
CABLES UNDERGROUND
BEFORE EXCAVATING
CALL COLLECT:

Orange County	714-633-0811	After Hours 714-547-6606
Riverside County	714-684-0071	714-547-6606
Inyo County	714-684-0071	714-547-6606
San Bernardino County	714-684-0071	714-547-6606
Los Angeles County	213-621-3111	24 HOUR SERVICE
Ventura County	213-621-3111	24 HOUR SERVICE
San Diego County	714-298-0595	714-232-0027

FOR FREE CABLE LOCATING SERVICE

CRAWLEY, HAWKINS & ASSOCIATES ENGINEERS AND SURVEYORS RIVERSIDE 684-9522 APPROVED: <i>George O. Crawley</i> DATE: 12/9/68 REG. CIVIL ENGINEER NO. 9455	MARK: _____ REVISIONS: _____ APPR. DATE: _____ DESIGNED BY: <i>GC</i> DRAWN BY: <i>GC</i> CHECKED BY: <i>BB</i>	APPROVED BY: _____ BY: _____ DATE: _____ OFFICE ENGINEER: _____ PARK DEPARTMENT: _____ TRAFFIC DIVISION: _____ ASSISTANT CITY ENG.: _____	APPROVED BY: _____ BY: _____ DATE: _____ DIRECTOR OF PUBLIC WORKS: _____	CITY OF RIVERSIDE, CALIFORNIA DEPARTMENT OF PUBLIC WORKS SEWER PLAN AND PROFILE EASEMENT SE 1/4 side of Palm Ave. 600'± to 1000'± SW 1/4 from Pine St. RS 1015	PROJECT NO. _____ 5-742 S-742 SHEET 2 OF 2 FILE NO. 4191
		FOR: 5000 PALM JT. VENTURE FB 94/6	HORIZ. SCALE: 1" = 40' VERT. SCALE: 1" = 4'		