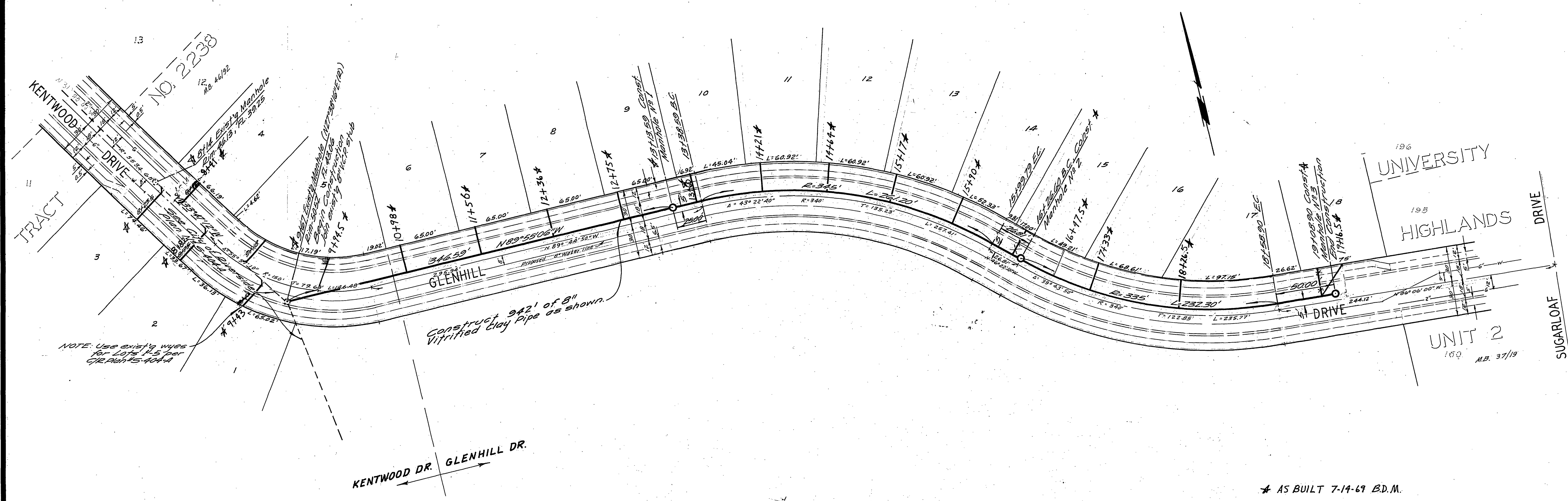




BENCHMARK:
 R.R. spike on Tel Pole 1,876' North of Blaine St.
 and East of AT&SF railroad - Elev 1055.94
 C/2 R.R. 11/40



Joints shall be in conformance to ASTM Specifications C-425-64 Type L or III
 or to ASTM Specifications C-294-66T (Band Seal) with certain exceptions
 or modifications on file with the City Engineer.

the owner, to at direction of
 See City Plan 2- proposed

QUANTITY ESTIMATE

8" V.C.P.	942 LF
4" V.C.P.	475 LF
Manhole Standard No. 500	3 Ea.
4"x8" tees	13 Ea.

* AS BUILT 7-14-69 B.D.M.

ALBERT A. WEBB ASSOCIATES CIVIL ENGINEERS RIVERSIDE, CALIFORNIA APPROVED BY: <i>[Signature]</i> DATE 2/13/69 R.E. No. 9876	CITY OF RIVERSIDE, CALIFORNIA DEPARTMENT OF PUBLIC WORKS APPROVED BY: <i>[Signature]</i> DATE 3-12-69 OFFICE ENGINEER PARK DEPARTMENT TRAFFIC DIVISION ASSISTANT CITY ENG.	SEWER PLAN AND PROFILE GLENHILL DRIVE & KENTWOOD DRIVE TRACT NO. 3670	PROJECT NO. S-745
			SHEET 1 OF 1 FILE NO. 68-348-B
W.O. 68-348 FOR: ADVANCED HOMES CO. F.B. 1004 DESIGNED BY: B.E.L. DRAWN BY: B.E.L. CHECKED BY: B.E.		HORIZ. SCALE: 1" = 50' VERT. SCALE: 1" = 5'	