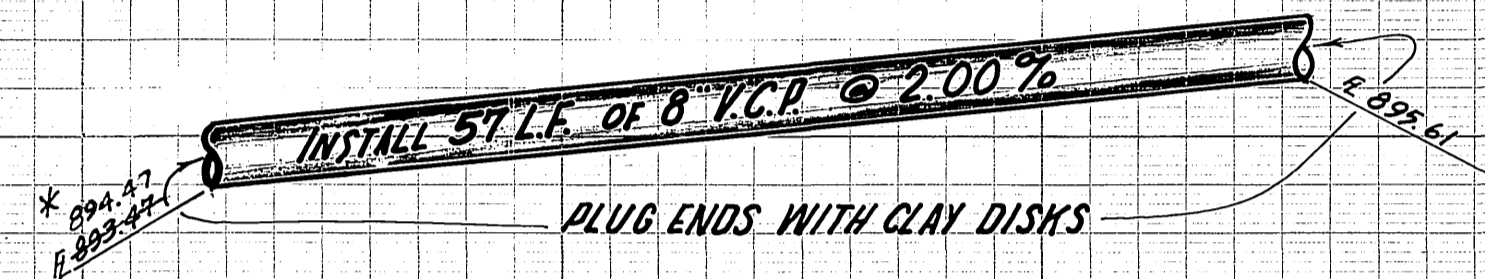
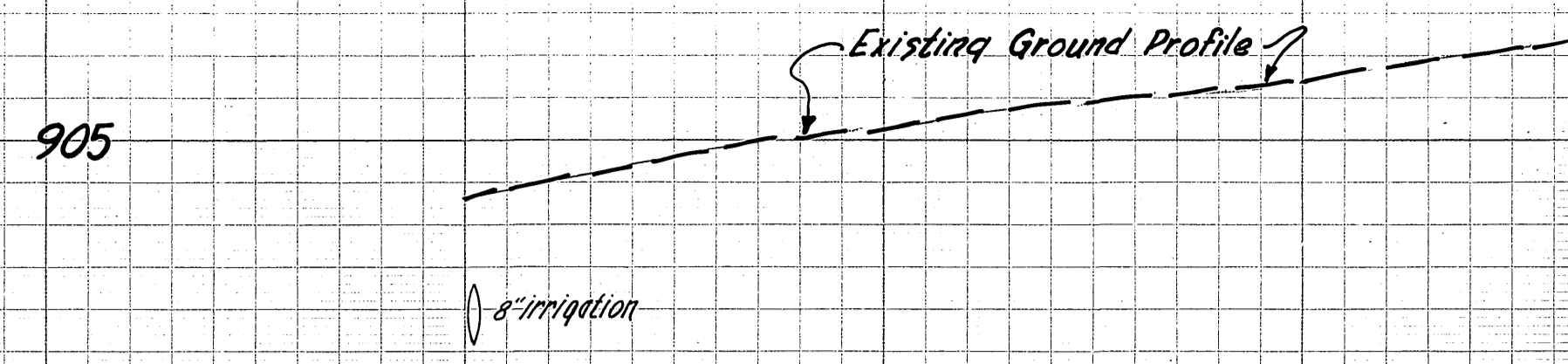
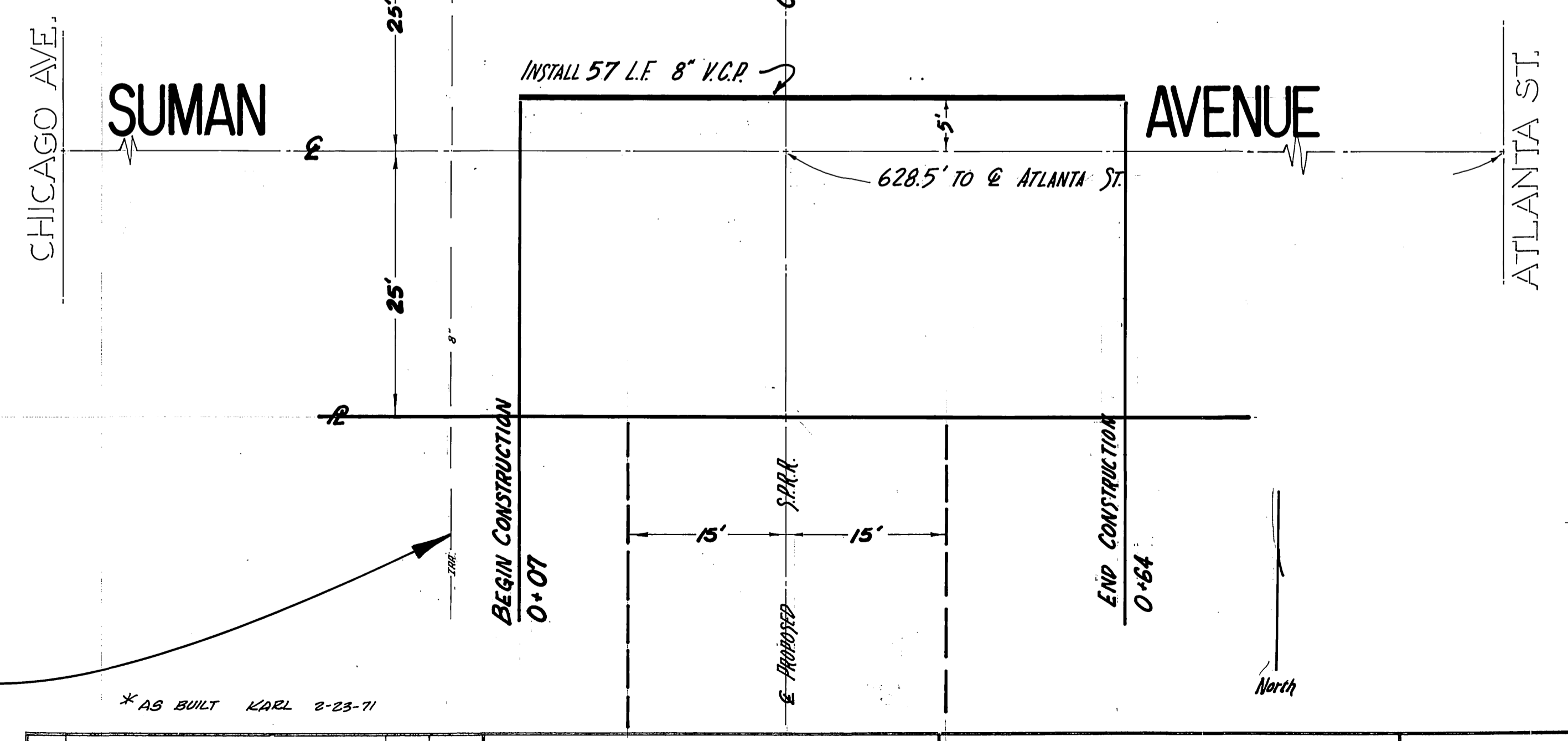
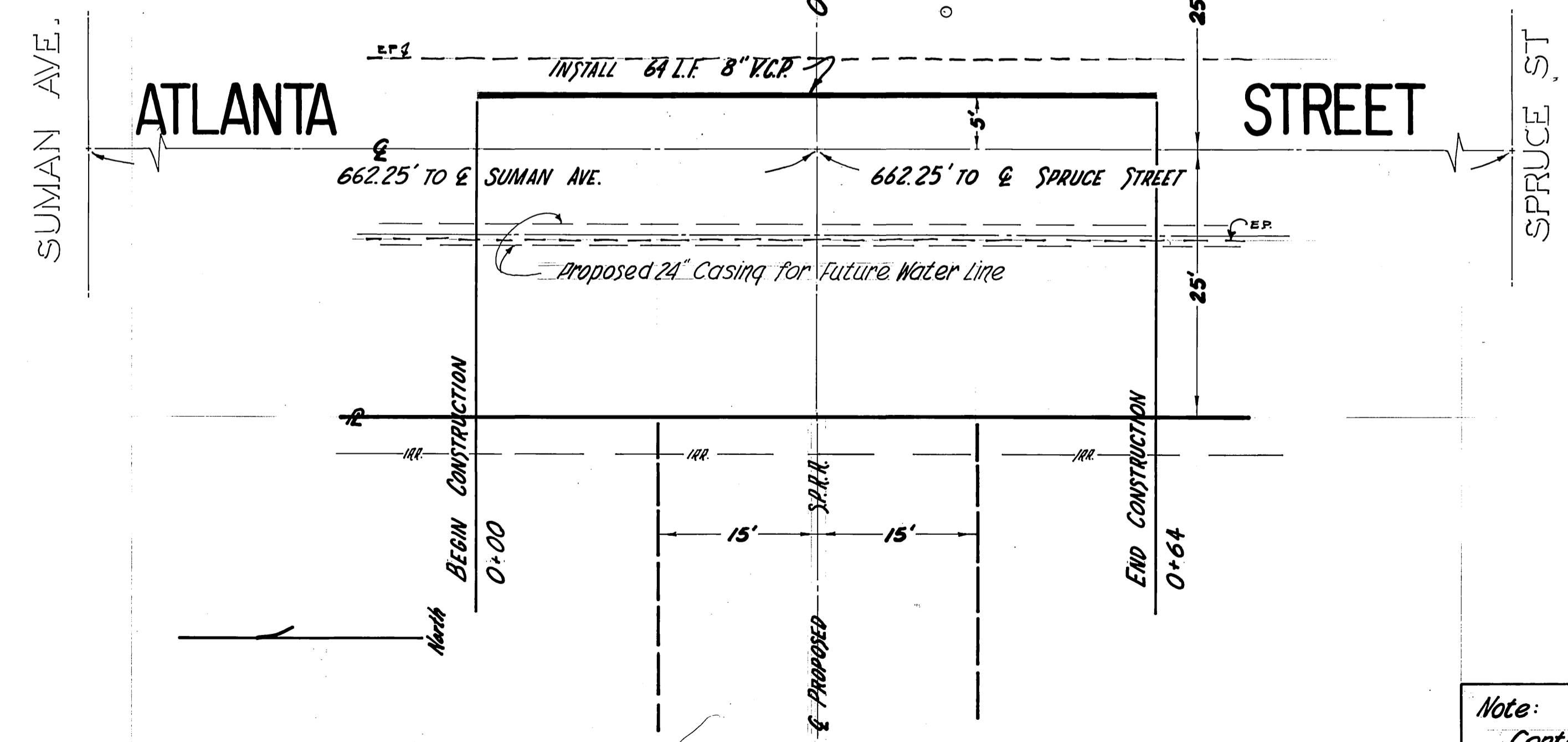


0+00 +25 +50 +75



0+00 +25 +50 +75



Note:
Contact George Blanchard
of the Gage Canal Co. at
683-8228 prior to trenching.

* AS BUILT KARL 2-25-71

DESIGNED BY <i>LDV</i>		DRAWN BY <i>MM</i>		CHECKED BY	
REVISIONS		APPR. DATE		APPROVED BY	
MARK		APPR. DATE		APPROVED BY	
CITY OF RIVERSIDE, CALIFORNIA		DEPARTMENT OF PUBLIC WORKS		PROJECT NO.	
OFFICE ENGINEER		BY DATE		ATLANTA STREET	
PARK DEPARTMENT		APPROVED BY		SUMAN AVENUE	
TRAFFIC DIVISION		DIRECTOR OF PUBLIC WORKS		S-747	
ASSISTANT CITY ENG.		DATE 4/2/62		SHEET 1 OF 1	
HORIZ. SCALE: 1" = 10'		VERT. SCALE: 1" = 2'		FILE NO.	