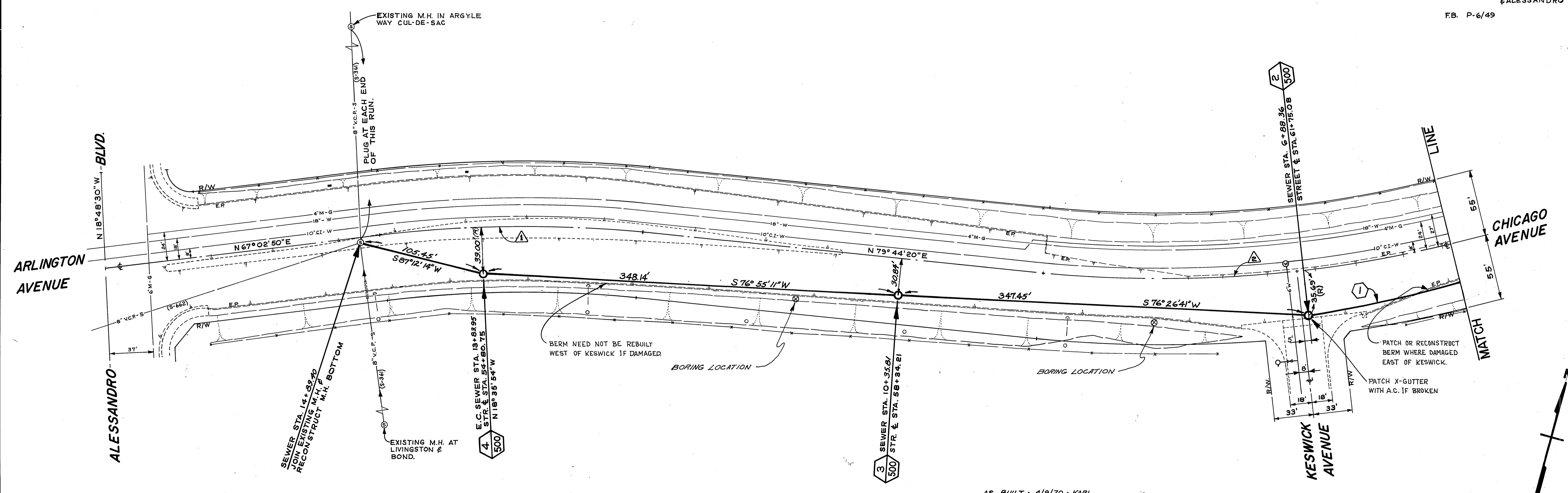


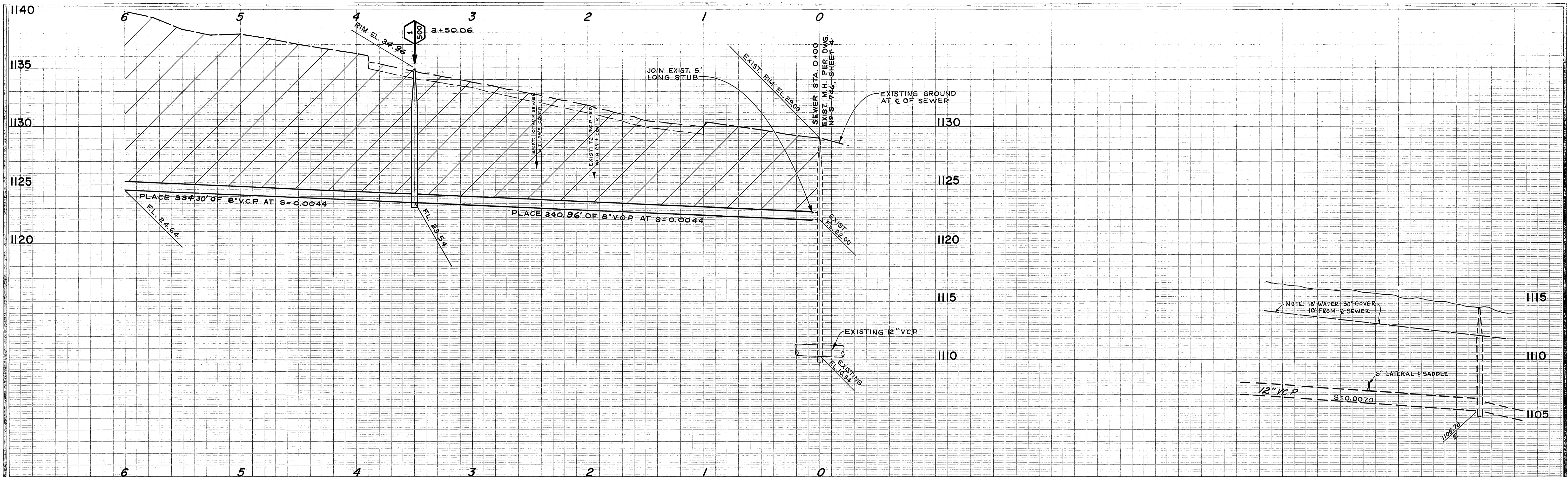
B.M. 1136.74 PK NAIL IN CTR OF SELY
 CB RETURN OF CHICAGO
 #ALESSANDRO
 FB. P-6/49



AS BUILT - 4/9/70 - KARL

SEWER CURVE DATA				CURVE DATA					
INDEX	R	Δ	T	L	INDEX	R	Δ	T	L
(1)	960'	20°11'40"	170.96	338.36	1	1000'	12°41'30"	111.21'	221.51'
					2	1000'	35°24'20"	319.19'	617.94'

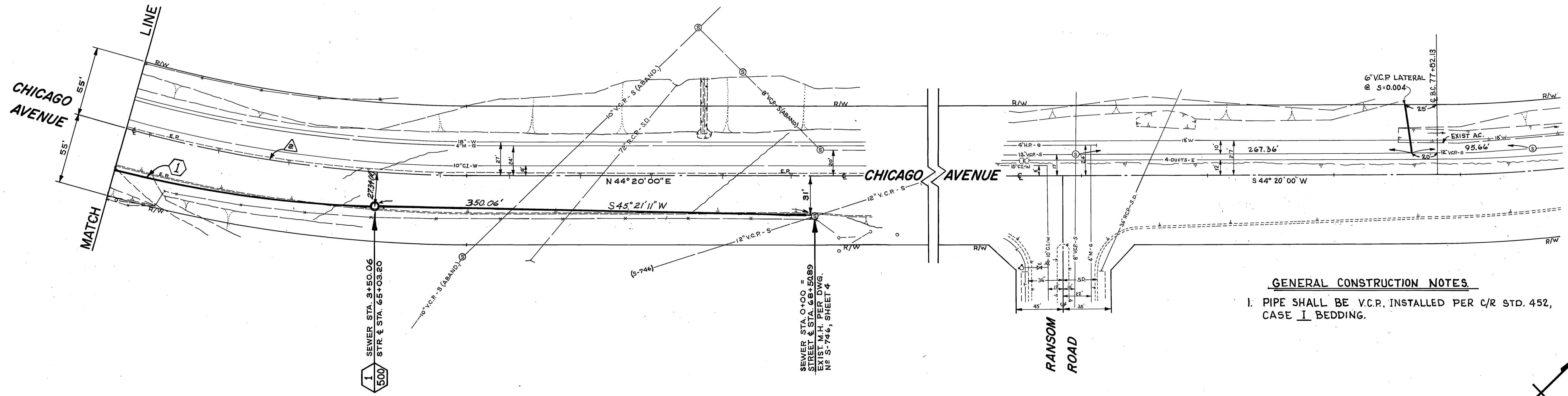
CITY OF RIVERSIDE, CALIFORNIA DEPARTMENT OF PUBLIC WORKS		CHICAGO AVE. SEWER From NE of Keswick to Aless. Blvd.		PROJECT NO. 542 S-748
APPROVED BY OFFICE ENGINEER PARK DEPARTMENT TRAFFIC DIVISION ASSISTANT CITY ENGINEER	BY DATE 1/19/71	APPROVED BY DIRECTOR OF PUBLIC WORKS	DATE 1/19/71	SHEET 1 OF 2
DESIGNED BY DRAWN BY CHECKED BY		HORIZ. SCALE: 1" = 40' VERT. SCALE: 1" = 4' FILE NO.		



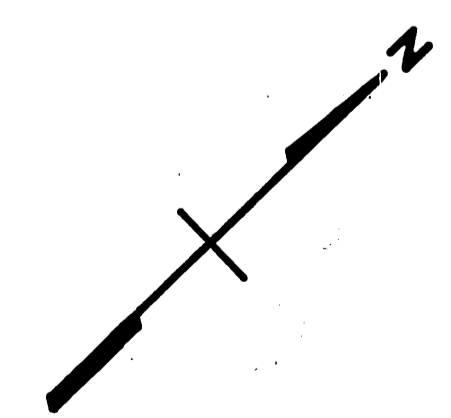
B.M. 1119.37 PK NAIL IN N'LY END OF ISLAND AT RANSON RD. & CHICAGO AVE.
 F.B. R-711/16

CONSTRUCTION LEGEND

0+00
 MANHOLE NUMBER AS INDICATED.
 CONSTRUCT MANHOLE PER C/R STD. 500



GENERAL CONSTRUCTION NOTES
 1. PIPE SHALL BE V.C.P. INSTALLED PER C/R STD. 452, CASE I BEDDING.



AS BUILT 4/9/70 KARL

SEWER CURVE DATA				CURVE DATA					
INDEX	R	Δ	T	L	INDEX	R	Δ	T	L
(1)	960'	20°11'40"	170.96'	338.36'	Δ	1000'	35°24'20"	319.19'	617.94'

CITY OF RIVERSIDE, CALIFORNIA DEPARTMENT OF PUBLIC WORKS		CHICAGO AVE. SEWER From NE of Keswick to Aless. Blvd.		PROJECT NO. 542 S-748
APPROVED BY OFFICE ENGINEER PARK DEPARTMENT TRAFFIC DIVISION ASSISTANT CITY ENGINEER	BY DATE 1/79	APPROVED BY DIRECTOR OF PUBLIC WORKS	PLAN & PROFILE FROM NE OF KESWICK TO KESWICK AVE.	
DESIGNED BY <i>RLW</i> DRAWN BY <i>JG</i> CHECKED BY <i>DCM</i>		DATE 1-2-79	SHEET 2 OF 2 HORIZ. SCALE: 1" = 40' VERT. SCALE: 1" = 4' FILE NO.	