

SEWER STA. 14+89.36 (ALT. 1)

13+89.95 (ALT. 1)

10+35.81 (ALT. 1)

6+88.36 (ALT. 1)

E. 28.56 (ALT. 1)

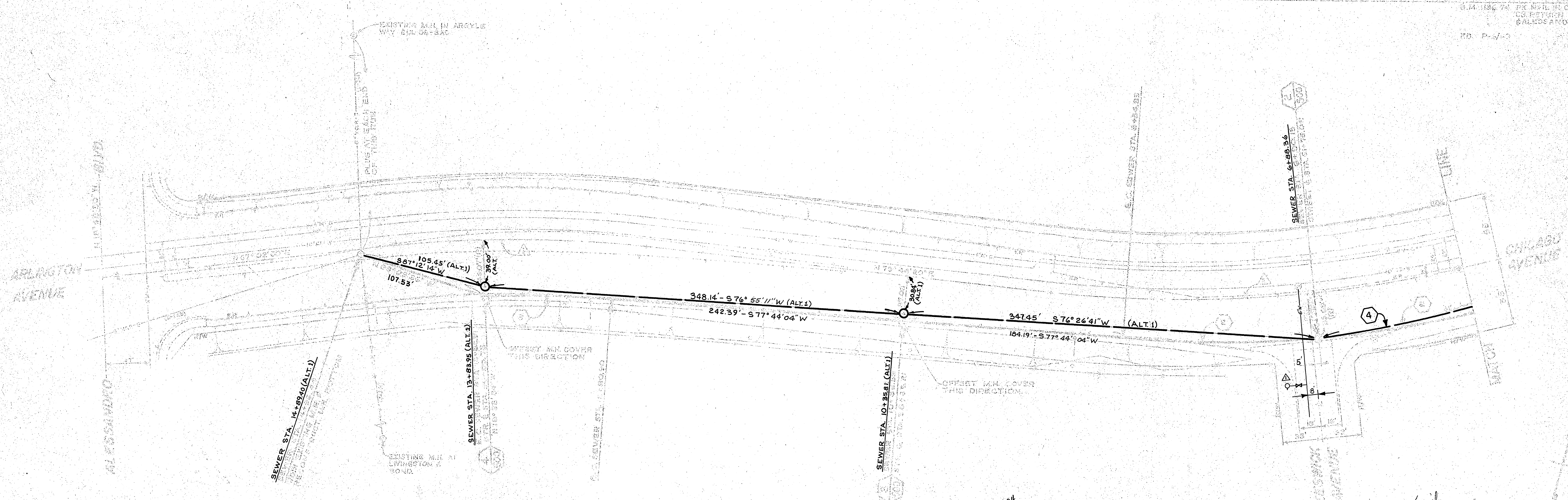
PLACE 101.45' OF 8" V.C.P. AT S=0.0044 (ALT. 1)

PLACE 344.14' OF 8" V.C.P. AT S=0.0044 (ALT. 1)

PLACE 343.45' OF 8" V.C.P. AT S=0.0044 (ALT. 1)

Exist 6" Water

U.M. 1186 741 P.C. MAIL IN CITY OF CHICAGO  
U.S. RETURN TO CHICAGO  
84505 ARVORO  
FD-36 (11-70)



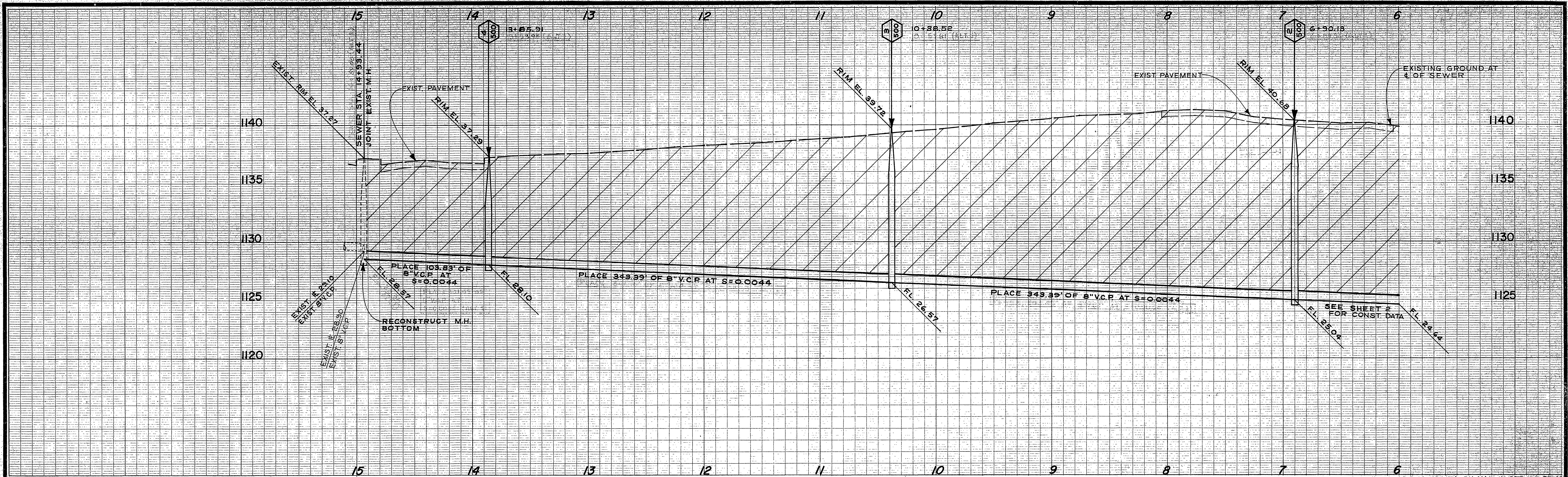
ALT SEWER LOCATION

ADDENDUM NO. 1 APPR. BY *William D. Hadwin* 11/20/63  
Added 6" water line & Fire hydrant at Keswick Ave. ... 11/63

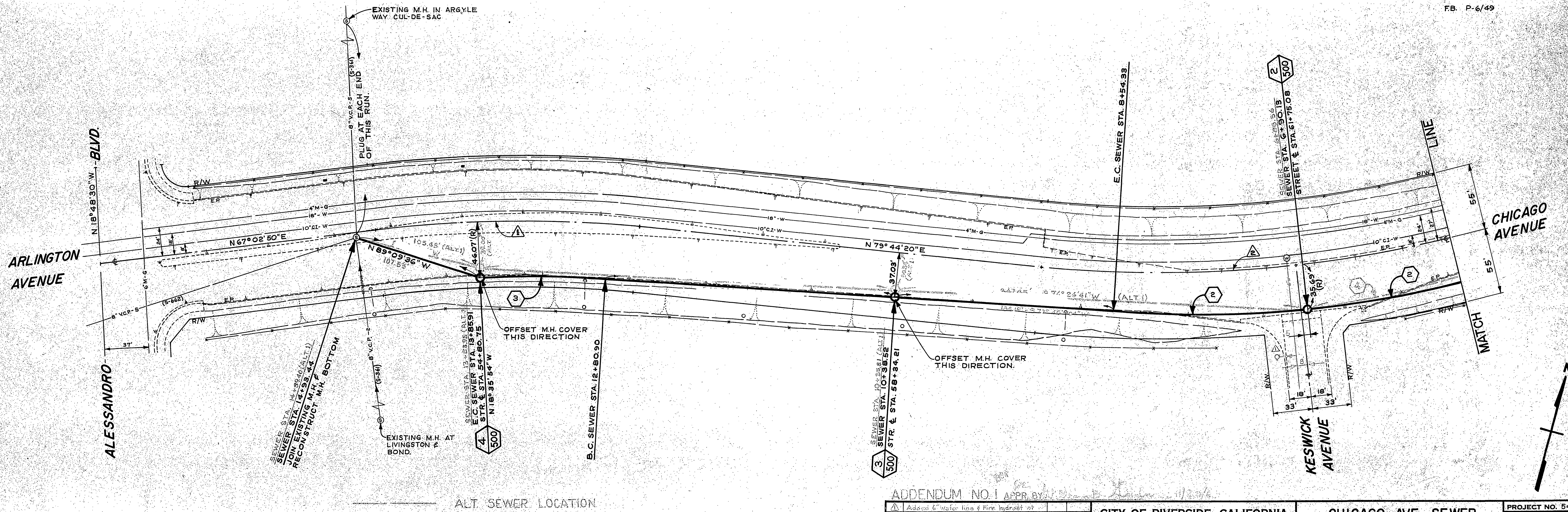
*Void*

ALT. SEWER CURVE DATA				
INDEX	R	Δ	IT	L
4	960'	20° 11' 40"	176.96'	338.36'





B.M. 1136.74 PK NAIL IN CTR. OF S.E. LY  
 CB. RETURN OF CHICAGO  
 & ALESSANDRO  
 FB. P-6/49



ALT SEWER CURVE DATA					SEWER CURVE DATA					CURVE DATA				
INDEX	R	Δ	T	L	INDEX	R	Δ	T	L	INDEX	R	Δ	T	L
(1)	950'	90° 11' 40"	170.88'	330.56'	(2)	960'	26° 43' 07"	227.98'	447.68'	(3)	950'	6° 19' 58"	52.48'	105.00'
										(4)	1000'	12° 41' 30"	111.21'	221.51'
										(5)	1000'	35° 24' 20"	319.19'	617.94'

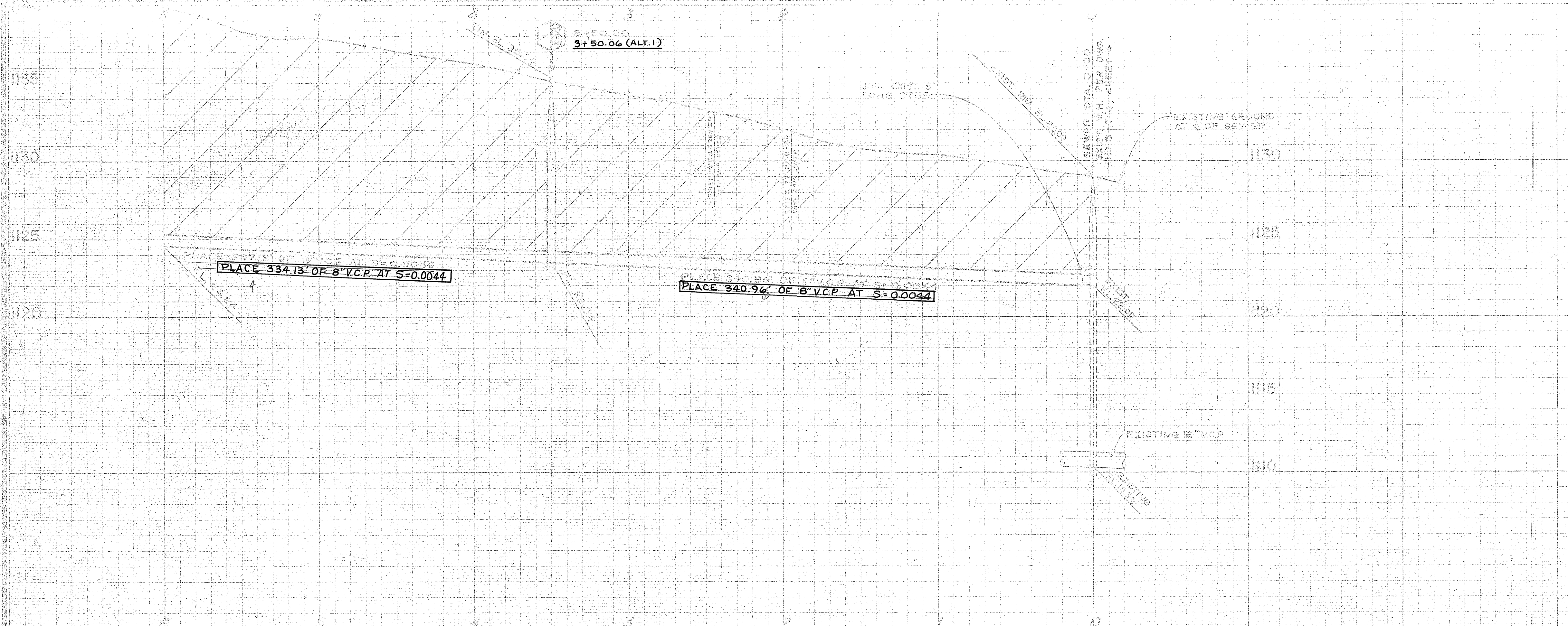
ADDENDUM NO. 1 APPR. BY: *[Signature]* DATE: *11/2/76*

CITY OF RIVERSIDE, CALIFORNIA DEPARTMENT OF PUBLIC WORKS		CHICAGO AVE. SEWER From NE of Keswick to Aless. Blvd.		PROJECT NO. 542
APPROVED BY OFFICE ENGINEER PARK DEPARTMENT TRAFFIC DIVISION ASSISTANT CITY ENGR.	BY <i>[Signature]</i> DATE 11/2/76	APPROVED BY <i>[Signature]</i> DIRECTOR OF PUBLIC WORKS	DATE 11/4/76	FILE NO.
DESIGNED BY <i>[Signature]</i> DRAWN BY <i>[Signature]</i> CHECKED BY <i>[Signature]</i>			HORIZ. SCALE: 1" = 40' VERT. SCALE: 1" = 4'	

S-748-A

SHEET 1 OF 2





B.M. 118.37 PK. N.M. IN N.E. END OF ISLAND AT RAMSON RD. & CHICAGO AVE.  
 E.B. R-7716

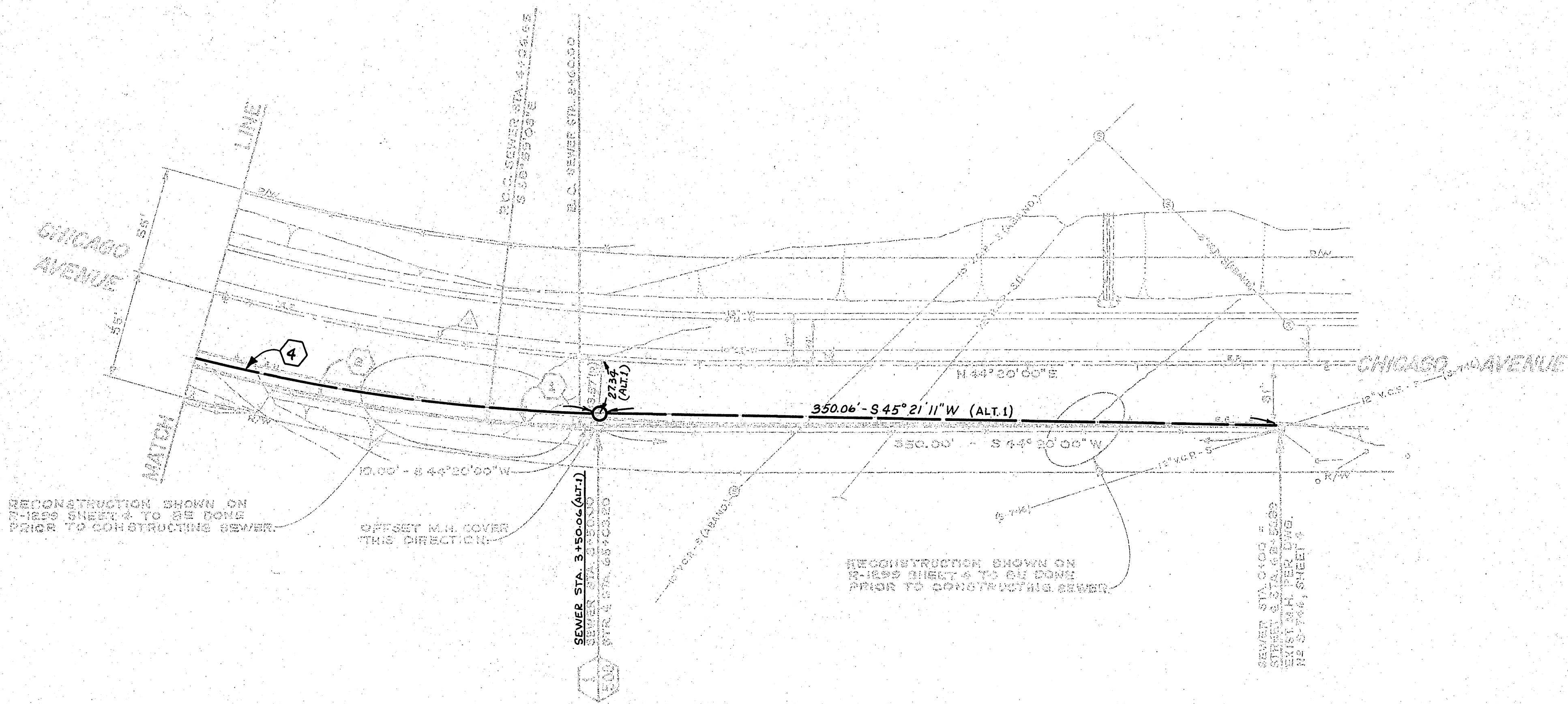
**CONSTRUCTION LEGEND**

MANHOLE NUMBER AS INDICATED.  
 CONSTRUCT MANHOLE PER C/R STD 500

ALT. SEWER LOCATION.

**GENERAL CONSTRUCTION NOTES**

1. PIPE SHALL BE 8" V.C.P., INSTALLED PER C/R STD. 452, CASE I, BEDDING
2. SEE TITLE SHEET OF DWG. NO. R-1292



RECONSTRUCTION SHOWN ON R-1292 SHEET 4 TO BE DONE PRIOR TO CONSTRUCTING SEWER.

OFFSET M.H. COVER THIS DIRECTION

RECONSTRUCTION SHOWN ON R-1292 SHEET 4 TO BE DONE PRIOR TO CONSTRUCTING SEWER.

ADDENDUM NO. 1 APPR. BY *William D. Gardner* 11/20/69

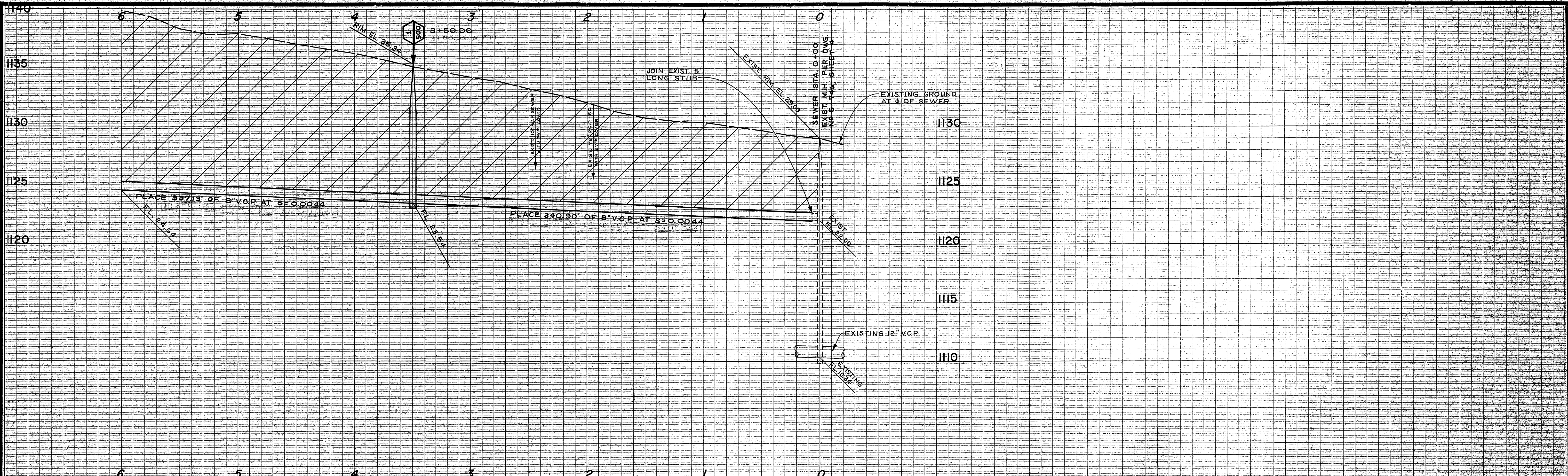
*Void*

ALT. SEWER CURVE DATA			
INDEX	R	Δ	T
(4)	960'	20° 11' 40"	170.96'

SEWER CURVE DATA			
INDEX	R	Δ	T
1	960'	20° 11' 40"	170.96'

CITY OF RIVERSIDE, CALIFORNIA DEPARTMENT OF PUBLIC WORKS		CHICAGO AVE. SEWER From NE of Keswick to Alsea Blvd.		PROJECT NO. E22
DESIGNED BY	APPROVED BY	PLAN & PROFILE		S-748A
CHECKED BY	DATE	FROM NE OF KESWICK TO KESWICK AVE.		
DATE: 11/20/69		SHEET: 2 of 2		





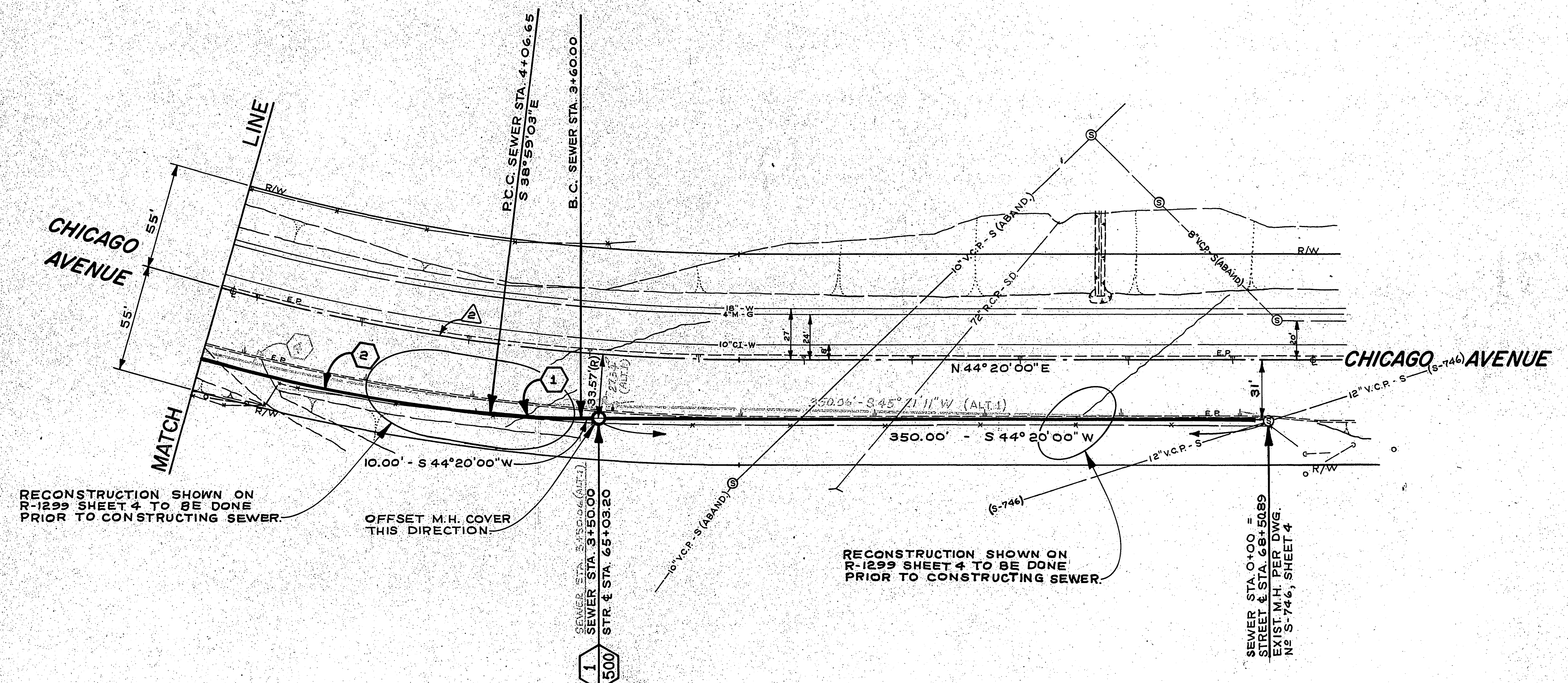
B.M. 1119.37 PK NAIL IN N'LY END OF ISLAND AT RAMSON RD. & CHICAGO AVE.  
F.B. R-711/16

**CONSTRUCTION LEGEND**

- MANHOLE NUMBER AS INDICATED. CONSTRUCT MANHOLE PER C/R STD 500
- ALT. SEWER LOCATION

**GENERAL CONSTRUCTION NOTES**

1. PIPE SHALL BE 8" V.C.P., INSTALLED PER C/R STD. 452, CASE I BEDDING.
2. SEE TITLE SHEET OF DWG. N<sup>o</sup> R-1299



ADDENDUM NO. 1 APPR. BY *[Signature]* DATE *11/1/16*

ALT. SEWER CURVE DATA				SEWER CURVE DATA				CURVE DATA						
INDEX	R	Δ	T	INDEX	R	Δ	T	INDEX	R	Δ	T			
(5)	960'	20°11'46"	170.96'	333.36'	(1)	400'	6°40'57"	23.35'	46.65'	(2)	1000'	35°24'20"	319.19'	617.94'
					(2)	960'	26°43'07"	227.98'	447.68'					

CITY OF RIVERSIDE, CALIFORNIA DEPARTMENT OF PUBLIC WORKS		CHICAGO AVE. SEWER From NE of Keswick to Aless. Blvd.		PROJECT NO. 542
APPROVED BY <i>[Signature]</i> DATE <i>11/1/16</i>		APPROVED BY <i>[Signature]</i> DATE <i>11/4/16</i>		S-748 SHEET 2 OF 2
OFFICE ENGINEER		DIRECTOR OF PUBLIC WORKS		
DESIGNED BY <i>[Signature]</i> DRAWN BY <i>[Signature]</i> CHECKED BY <i>[Signature]</i>		HORIZ. SCALE: 1" = 40' VERT. SCALE: 1" = 4'		FILE NO.