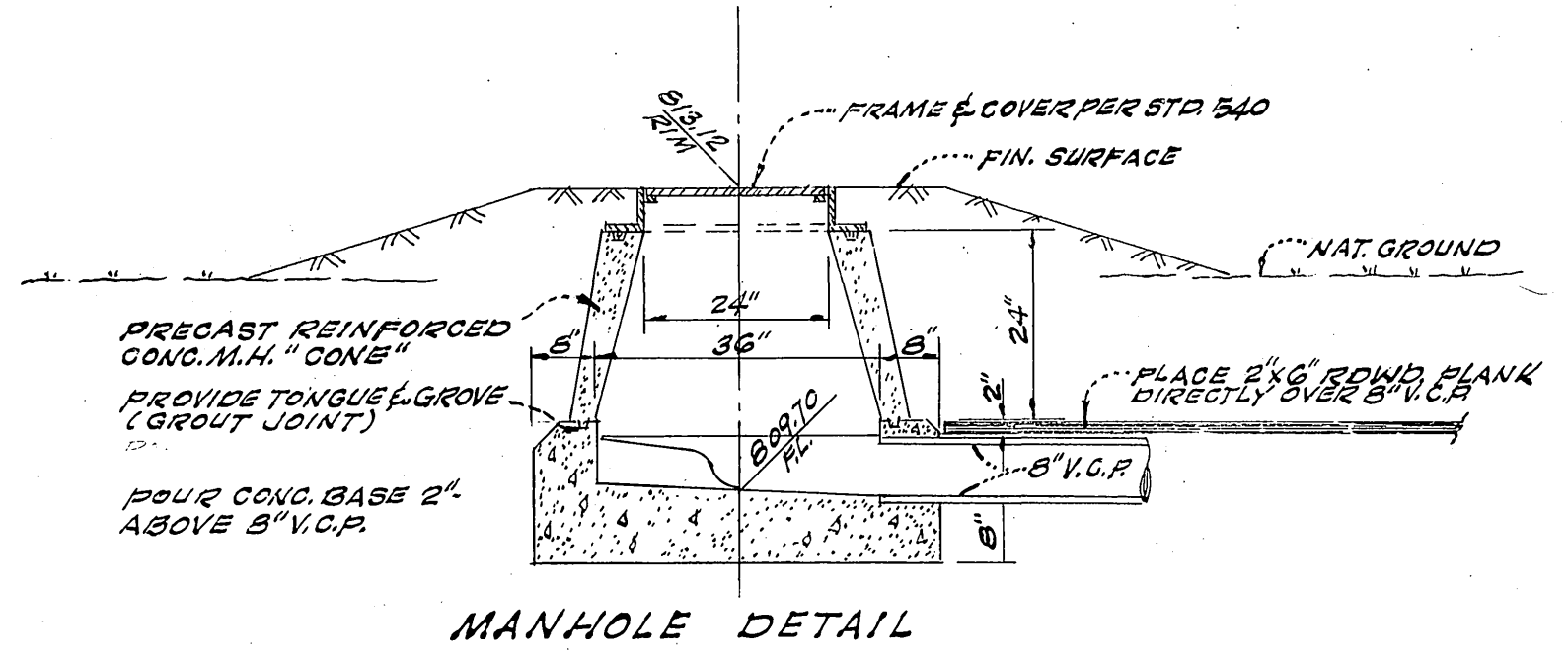
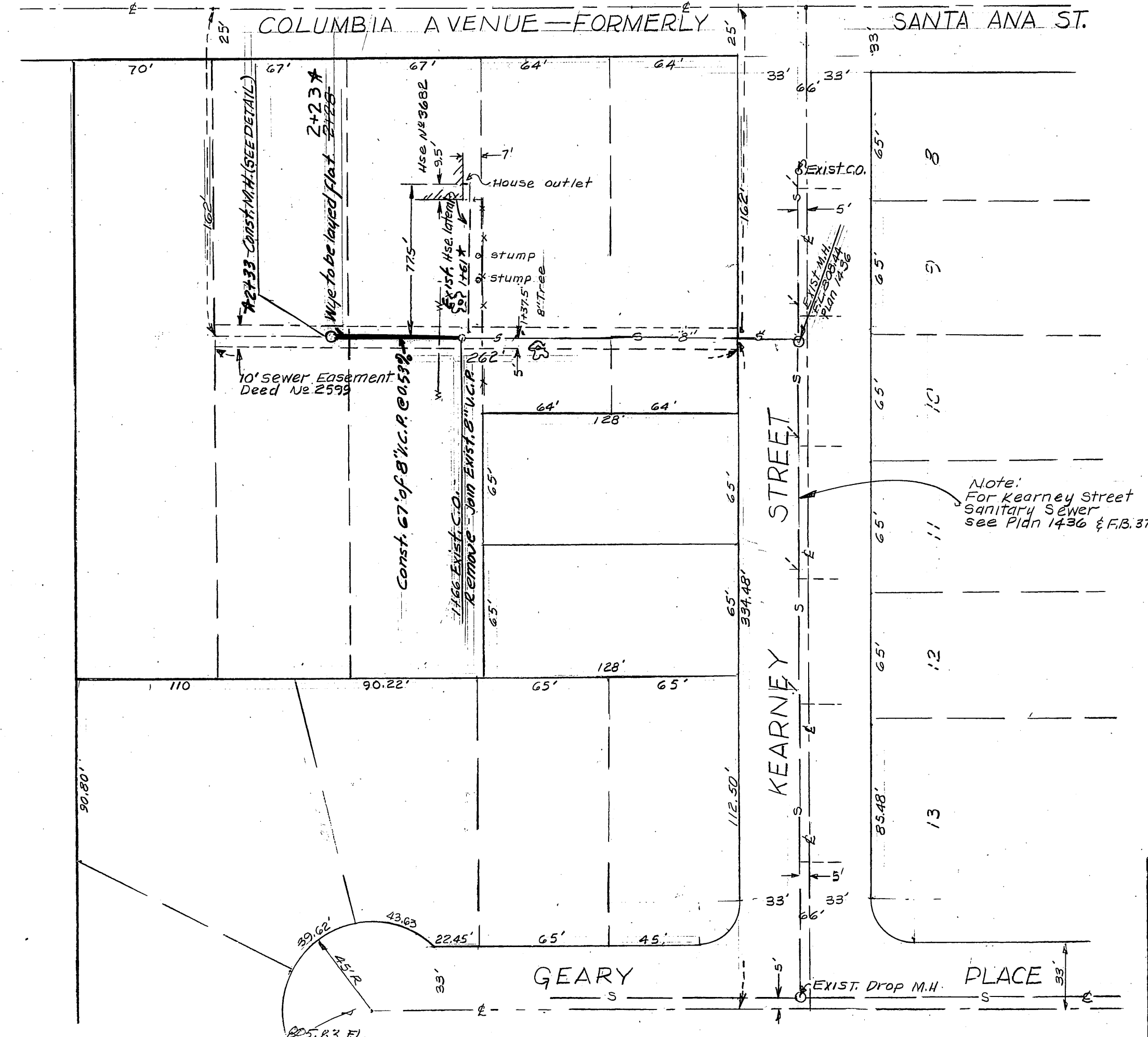


B.M. ELEV. 813.99 S&L IN S/E CURB
RETURN COLUMBIA AVE. & KEARNEY
STREET. F.B. 560/43
F.B. 639/61 SCALE VERT 1"=5'
HOR. 1"=50'

PROFILE	DATE	BY
SURVEYED		
PLOTTED		
CHECKED		
NO. OF MAN. CHANGED		



GENERAL NOTES

- CONSTRUCTION SHALL BE IN ACCORDANCE WITH THE CITY OF RIVERSIDE, DEPT. OF PUBLIC WORKS, STANDARD SPECIFICATIONS NO. 461 AND STD. DRAWINGS.
- IT SHALL BE THE RESPONSIBILITY OF THE CONTRACTOR TO CLEAR THE RIGHT OF WAY IN ACCORDANCE WITH THE PROVISIONS OF THE LAW AS IT AFFECTS EACH UTILITY INCLUDING IRRIGATION LINES AND APPURTENANCES AND AT NO COST TO THE CITY.
- JOINTS SHALL BE IN CONFORMANCE TO A.S.T.M. SPECIFICATIONS C-425-64, TYPE I OR III OR TO A.S.T.M. SPECIFICATIONS C-594-GGT (BAND SEAL) WITH CERTAIN EXCEPTIONS OR MODIFICATIONS ON FILE WITH THE CITY ENGINEER.
- PIPE SHALL BE BEDDED PER CASE I, STD. DWG. NO. 452, UNLESS OTHERWISE SPECIFIED ON THE PLAN.
- LOCATION OF WYE AND LATERAL TO BE DETERMINED AT THE DIRECTION OF THE OWNER.
- ALL STUBS AND LATERALS TO BE CONSTRUCTED IN ACCORDANCE WITH STD. DWG. NO. 562.
- PRIOR TO CONSTRUCTION OF SEWER, CONTRACTOR IS TO EXPOSE EXISTING SEWER AND CONTACT ENGINEER FOR VERIFICATION OF EXISTING ELEVATIONS.

PLAN	DATE	BY
SURVEYED		
PLOTTED		
CHECKED		
NO. OF MAN. CHANGED		

★ AS BUILT 7-25-61 B.M.

SCALE 1"=50'

CRAWLEY, HAWKINS & ASSOCIATES
ENGINEERS AND SURVEYORS
RIVERSIDE 684-9522
APPROVED *George O. Crawley* DATE 5-6-69
R.E. 9455
FOR E.R. BLOCK

REVISIONS		CITY OF RIVERSIDE, CALIFORNIA DEPARTMENT OF PUBLIC WORKS	
MARK	DATE	DESCRIPTION	
			1 8" SANITARY SEWER IN 10' SEWER EASEMENT NWLY OF KEARNEY STREET BETWEEN COLUMBIA AVENUE AND GEARY PLACE
DESIGNED BY	SUBMITTED BY	APPROVED BY	PROJ. NO.
DRAWN BY	PARK DEPT. TRAFFIC DIV.	<i>[Signature]</i> DIRECTOR OF PUBLIC WORKS	S-10
CHECKED BY	RECOMMENDED BY	DATE 6-1-69	SHEET 1 OF 1