

- GENERAL NOTES**
- CONSTRUCTION SHALL BE IN ACCORDANCE WITH THE CITY OF RIVERSIDE, DEPARTMENT OF PUBLIC WORKS, STANDARD SPECIFICATIONS NO. 461 AND STANDARD DRAWINGS.
  - IT SHALL BE THE RESPONSIBILITY OF THE CONTRACTOR TO CLEAR THE RIGHT OF WAY IN ACCORDANCE WITH THE PROVISIONS OF THE LAW AS IT AFFECTS EACH UTILITY INCLUDING IRRIGATION LINES AND APPURTENANCES AND AT NO COST TO THE CITY.
  - LOCATION OF TEES AND LATERALS TO BE DETERMINED AT THE DIRECTION OF THE OWNER.
  - PIPE SHALL BE BEDDED PER CASE 1, STANDARD DRAWING NO. 452 UNLESS OTHERWISE SPECIFIED ON PLAN.
  - ALL STUBS AND LATERALS TO BE CONSTRUCTED IN ACCORDANCE WITH STANDARD DRAWING NO. 562. STUBS SHALL BE PLUGGED AND CAPPED.
  - MANHOLE FRAMES AND COVERS TO BE SET TO PROPOSED PAVEMENT GRADES.
  - LATERALS ARE TO BE 4" AND EXTENDED TO PROPERTY LINE.
  - PRIOR TO CONSTRUCTION OF SEWER, CONTRACTOR IS TO EXPOSE EXISTING SEWER AND CONTACT ENGINEER FOR VERIFICATION OF EXISTING ELEVATIONS.
  - JOINTS IN VITRIFIED CLAY PIPE SEWERS SHALL BE IN CONFORMANCE TO A.S.T.M. SPECIFICATIONS C-425-64 TYPE 1 OR 111 OR TO A.S.T.M. SPECIFICATIONS C-594-66T (BAND SEAL) WITH CERTAIN EXCEPTIONS OR MODIFICATIONS ON FILE WITH THE CITY ENGINEER.

QUANTITY ESTIMATE	
4" V.C.P.	1186 L.F.
8" V.C.P.	1596 L.F.
Clean Out	1 ea.
MANHOLES (STD 500)	7 EA.
8" X 4" WYES OR TEES	3.5 EA.
REMOVE CLEAN OUT	1 ea.

BENCH MARK: FB 706/16  
 R.R. SPIKE IN POLE 6654894-H  
 ON S.E. COR. FILLMORE & INDIANA.  
 ELEV. 740.179

NOTICE TO CONTRACTOR

THE EXISTENCE AND LOCATION OF ANY UNDERGROUND UTILITY PIPES OR STRUCTURES SHOWN ON THESE PLANS ARE OBTAINED BY A SEARCH OF THE AVAILABLE RECORDS. TO THE BEST OF OUR KNOWLEDGE, THERE ARE NO EXISTING UTILITIES EXCEPT AS SHOWN ON THESE PLANS.

THE CONTRACTOR IS REQUIRED TO TAKE DUE PRECAUTIONARY MEASURES TO PROTECT THE UTILITY LINES SHOWN AND ANY OTHER LINES NOT OF RECORD OR NOT SHOWN ON THESE PLANS.

PLANS PREPARED UNDER SUPERVISION OF:

*Jack McInerney* DATE 1-1-69  
 JACK McINERNEY, R.C.E. 14325

IN THE OFFICES OF  
 VOORHEIS-TRINDLE-NELSON  
 13794 BEACH BLVD.  
 WESTMINSTER, CALIFORNIA

MARK	REVISIONS	APPR.	DATE

CITY OF RIVERSIDE, CALIFORNIA  
 DEPARTMENT OF PUBLIC WORKS

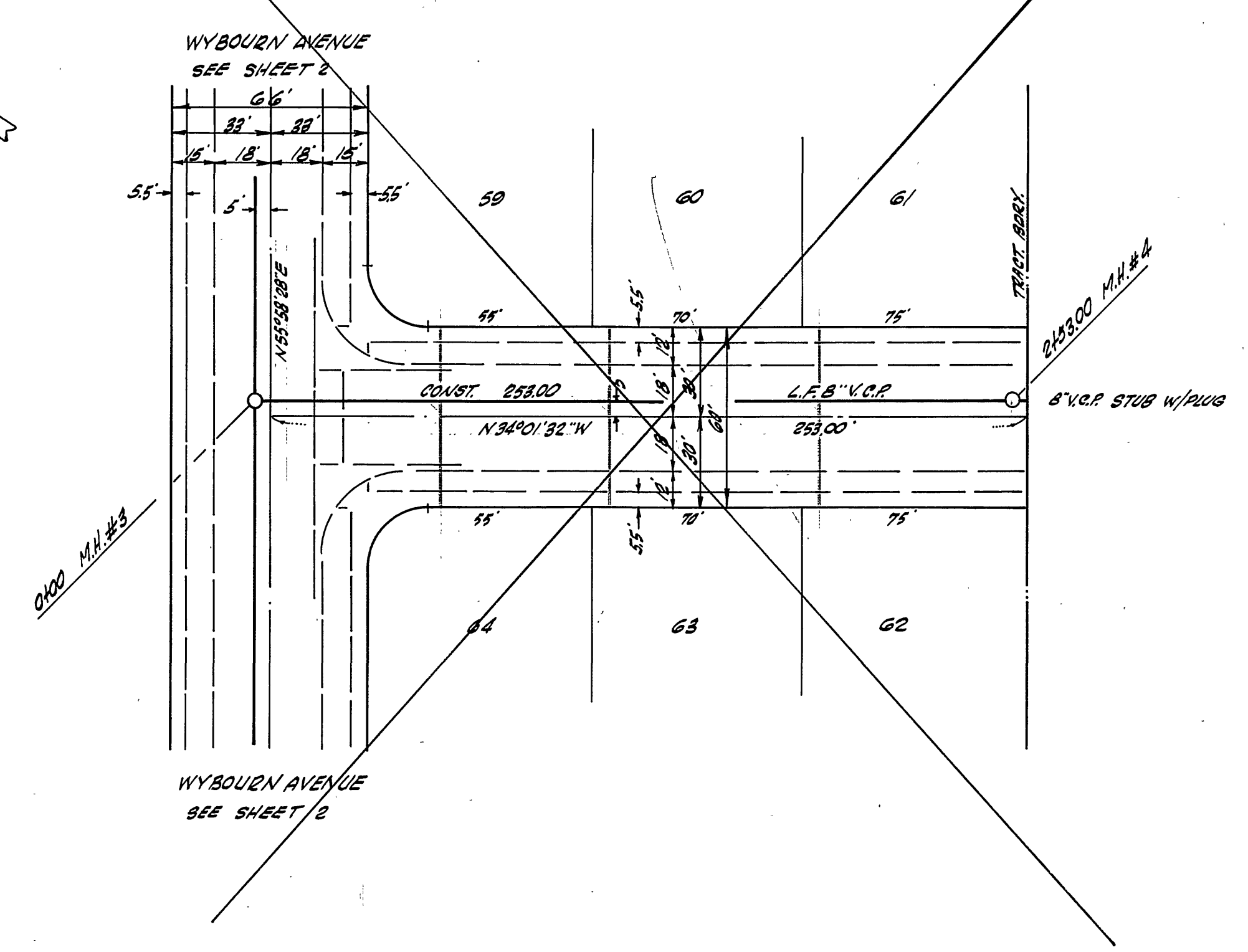
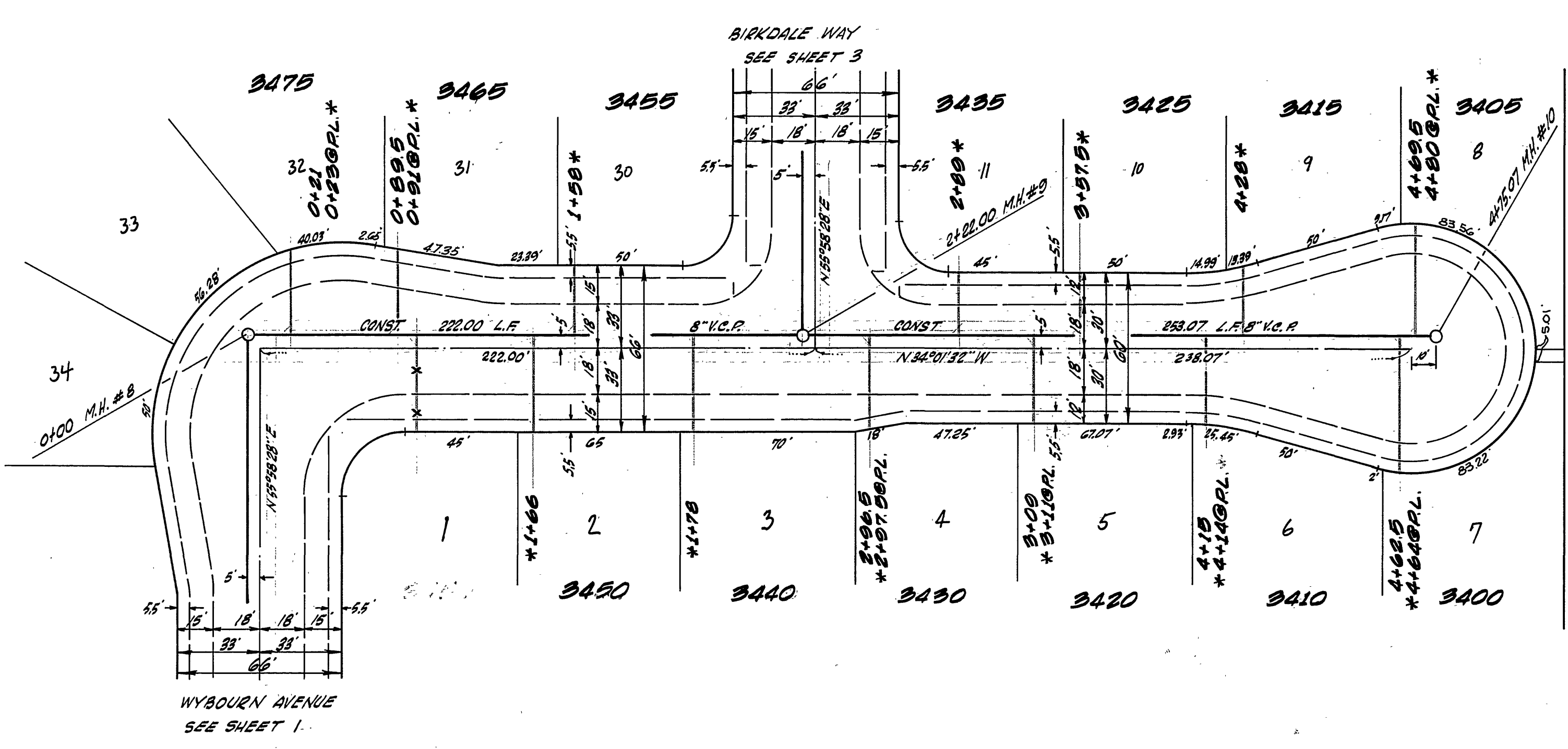
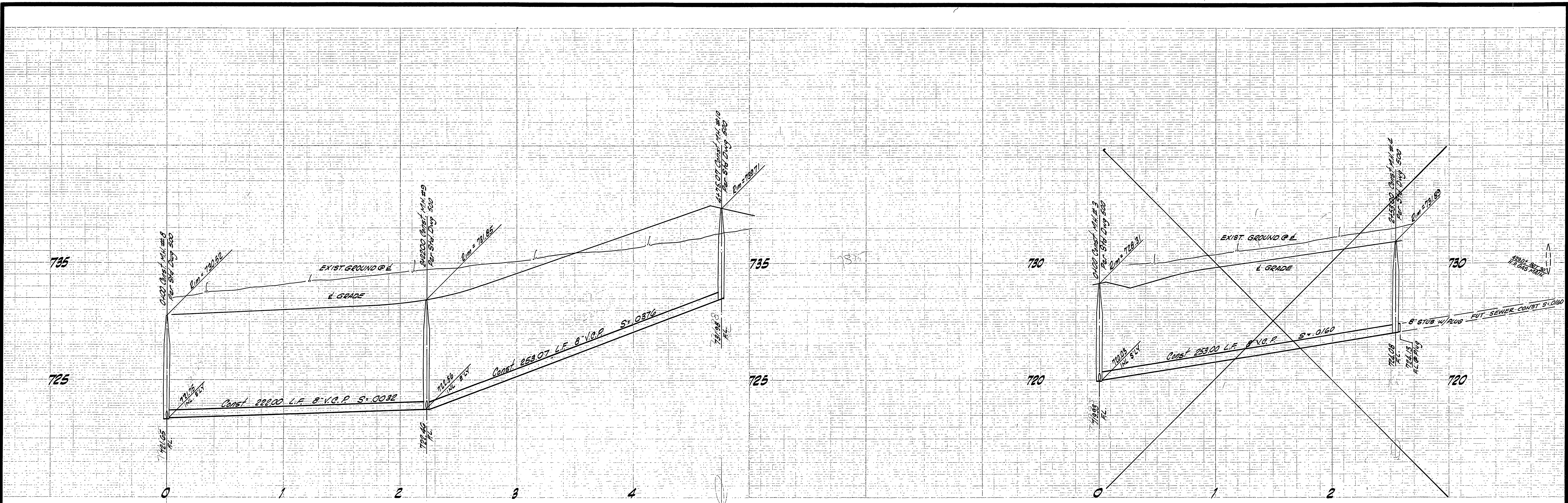
APPROVED BY: *[Signature]* DATE: 6-23-69  
 OFFICE ENGINEER  
 PARK DEPARTMENT  
 TRAFFIC DIVISION  
 ASSISTANT CITY ENG.

SEWER PLAN & PROFILE  
 WYBOURN AVE.  
 TRACT NO. 3783

PROJECT NO. S-756  
 SHEET 1 OF 3  
 FILE NO.

HORIZ. SCALE: 1" = 40'  
 VERT. SCALE: 1" = 4'





TORREY

STREET

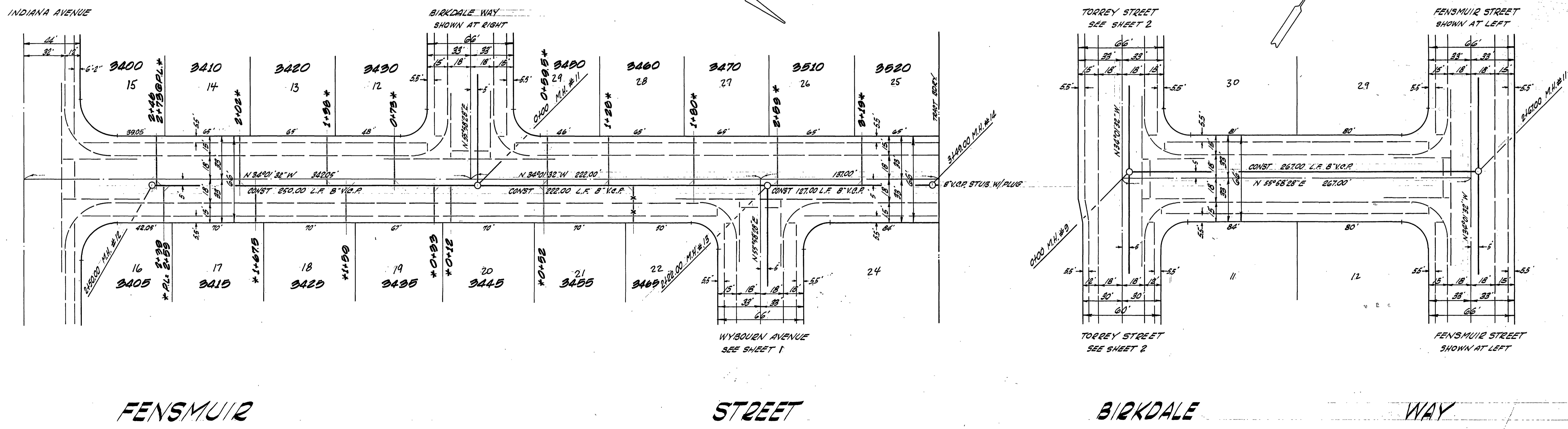
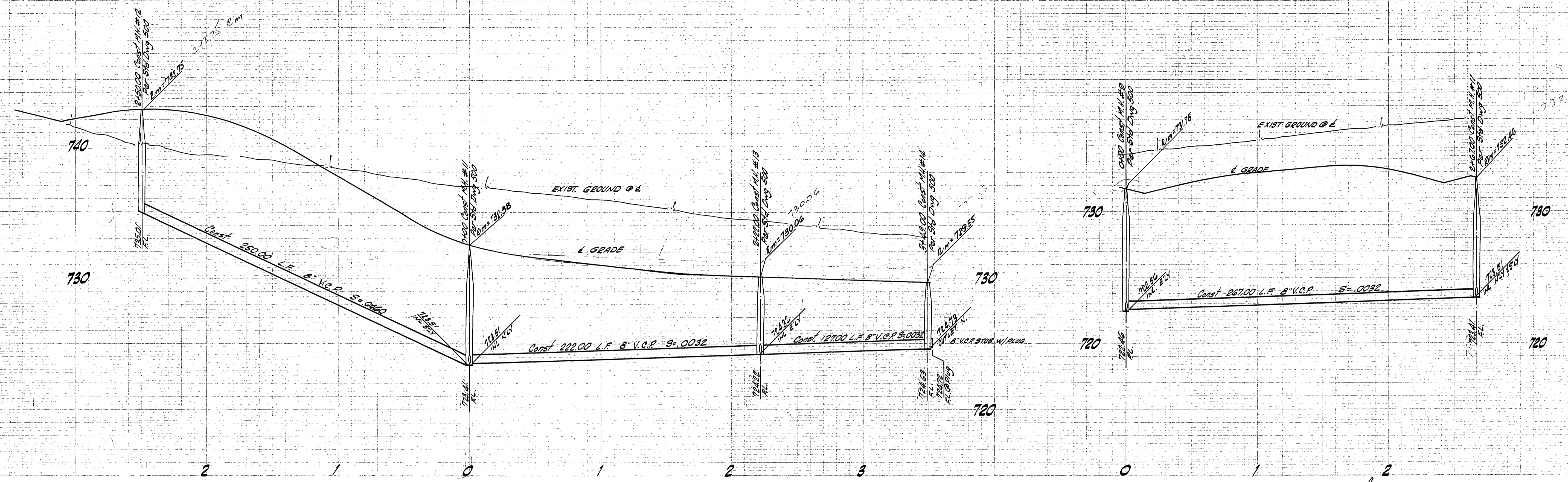
PICKWICK

STREET

\* CG built - 5-20-71 - norm

PLANS PREPARED UNDER SUPERVISION OF: <i>Jack Mahoney</i> DATE: 1-1-69 JACK MAHONEY, R.C.E. 14325 IN THE OFFICES OF VOORHEIS-TRINDLE-NELSON 13794 BEACH BLVD WESTMINSTER, CALIFORNIA		CITY OF RIVERSIDE, CALIFORNIA DEPARTMENT OF PUBLIC WORKS APPROVED BY: <i>[Signature]</i> OFFICE ENGINEER DATE: 6/22/69 PARK DEPARTMENT TRAFFIC DIVISION ASSISTANT CITY ENG. DATE: 6-23-69		SEWER PLAN & PROFILE TORREY STREET TRACT NO 3783 PROJECT NO. S-756 SHEET 2 OF 3 FILE NO.	
MARK	REVISIONS	APPR. DATE	DATE	HORIZ. SCALE: 1" = 40'	VERT. SCALE: 1" = 4'
DESIGNED BY: JL	DRAWN BY: JL	CHECKED BY: JL	DATE: 6-23-69		





FENSMUIR

STREET

BIRKDALE

WAY

PLANS PREPARED UNDER SUPERVISION OF: <i>Jack Mahoney</i> DATE: 1-1-69 JACK MAHONEY P.E. 14325		CITY OF RIVERSIDE, CALIFORNIA DEPARTMENT OF PUBLIC WORKS		PROJECT NO. <b>S-756</b>
IN THE OFFICES OF VOORHEIS-TRINDLE-NELSON 13794 BEACH BLVD. WESTMINSTER, CALIFORNIA		APPROVED BY OFFICE ENGINEER <i>Jack Mahoney</i>	BY DATE <i>6/20</i>	APPROVED BY DIRECTOR OF PUBLIC WORKS <i>David L. ...</i>
MARK REVISIONS APPR. DATE DESIGNED BY J.L. DRAWN BY J.L. CHECKED BY J.L.		ASSISTANT CITY ENGINEER <i>6/23</i>	DATE <b>6-23-69</b>	SHEET <b>3</b> OF <b>3</b> FILE NO.

\* 08 built 5-20-71 norm

SEWER PLAN & PROFILE  
 FENSMUIR STREET  
 BIRKDALE WAY  
 TRACT NO 3783

HORIZ. SCALE: 1" = 40'  
 VERT. SCALE: 1" = 4'