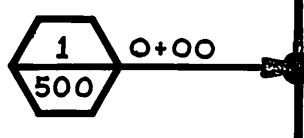
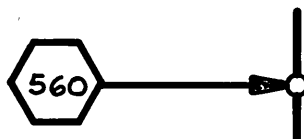
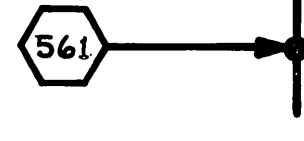
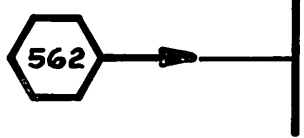



CONSTRUCTION LEGEND

-  CONSTRUCT MANHOLE PER C/R STD. 500 AND MANHOLE NUMBER AS INDICATED.
-  CONSTRUCT CLEANOUT PER C/R STD. 560
-  CONSTRUCT CHIMNEY PIPE PER C/R STD. 561
-  PLACE 4" V.C.P. LATERAL PER C/R STD. 562
-  PLACE "T" OR "WYE" PER C/R STD. 562

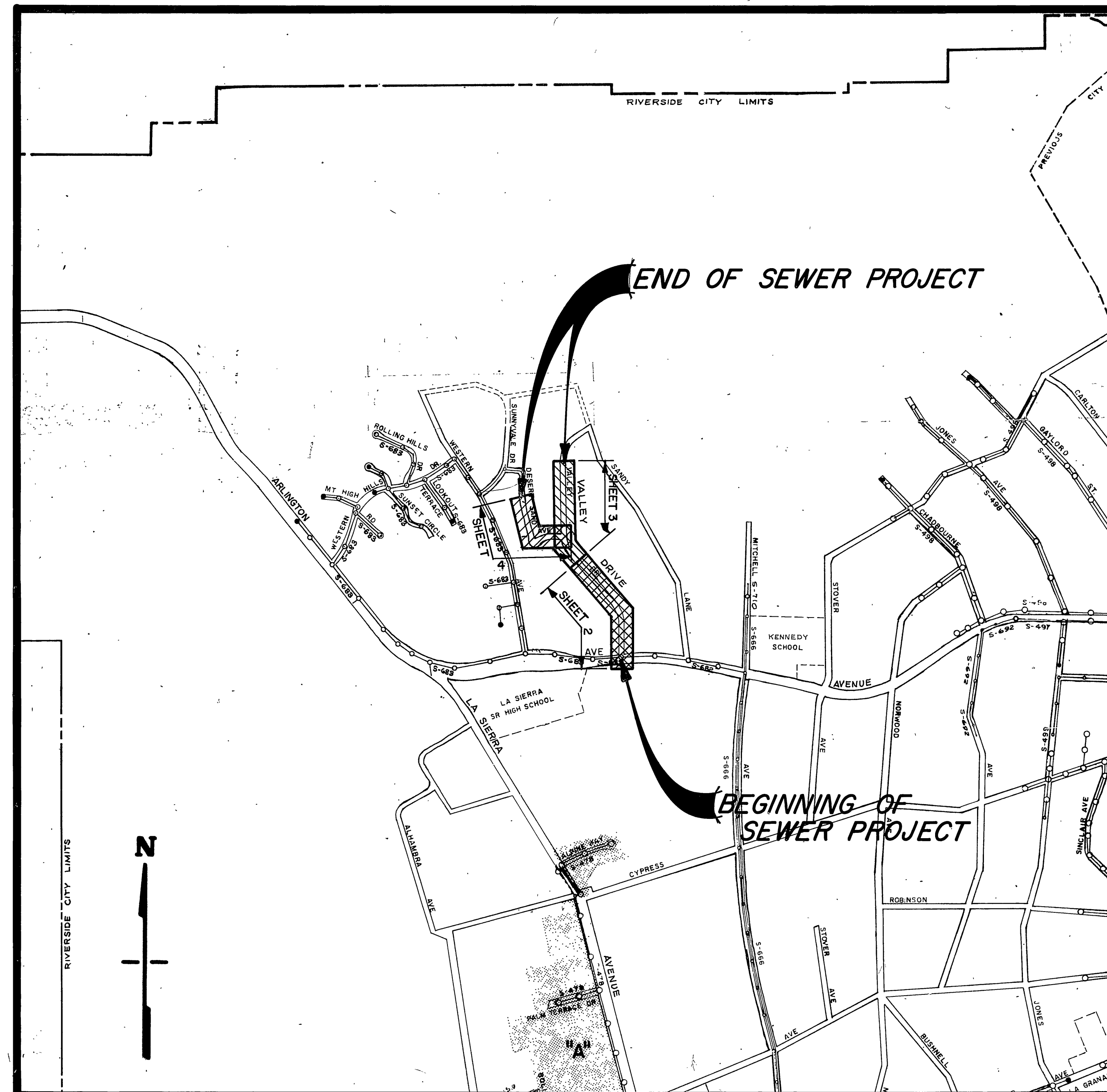
RIVERSIDE



CALIFORNIA

PUBLIC WORKS DEPARTMENT
VALLEY DRIVE
ASSESSMENT DISTRICT
(SEWER)

| SHEET INDEX | |
|-------------|--|
| SHEET 1 | TITLE SHEET |
| " 2 | PLAN & PROFILE, ARLINGTON TO DESERT SAND |
| " 3 | " " " DESERT SAND TO SANDY LANE |
| " 4 | " " " DESERT SAND AVENUE |



EXISTING CULTURE & UNDERGROUND LEGEND

| EXISTING UNDERGROUND UTILITIES | | | |
|--------------------------------|---------------|--------------------|-----------|
| SANITARY SEWER | 8" VCP - S | TELEPHONE CONDUIT | T - T |
| WATER LINE | 6" CI - W | ELECTRICAL CONDUIT | E - E |
| STORM DRAIN | 24" RCP - SD | STREET LIGHTING | SL - SL |
| CULVERT | 15" CONC - C | TRAFFIC SIGNAL | SIG - SIG |
| IRRIGATION LINE | 20" IRR - IRR | FIRE ALARM | F - F |
| GAS LINE | 3" M - G | ABANDONED UTILITY | - - - - - |

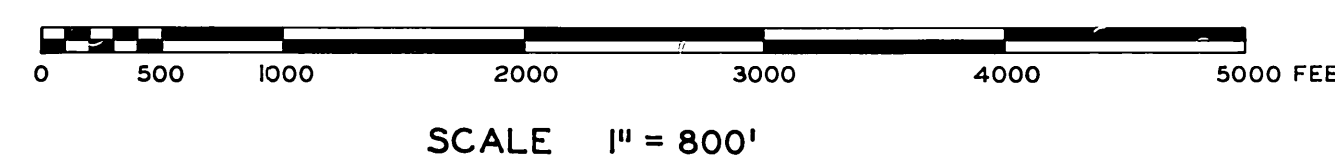
| EXISTING TOPOGRAPHY | |
|----------------------|---------|
| CENTER LINE | — C — |
| RIGHT-OF-WAY LINE | — R/W — |
| SUBDIVISION LOT LINE | — P — |

- ⊙ SANITARY SEWER MH
- ⊙ SANITARY SEWER CLEANOUT
- ⊙ STORM DRAIN MH
- ⊙ IRRIGATION WEIR
- ⊙ WATER MH
- ⊙ GAS MH
- ⊙ ELECTRIC MH
- ⊙ TELEPHONE MH OR VAULT
- POWER POLE
- GUY POLE
- → POLE & GUY ANCHOR

GENERAL CONSTRUCTION NOTES

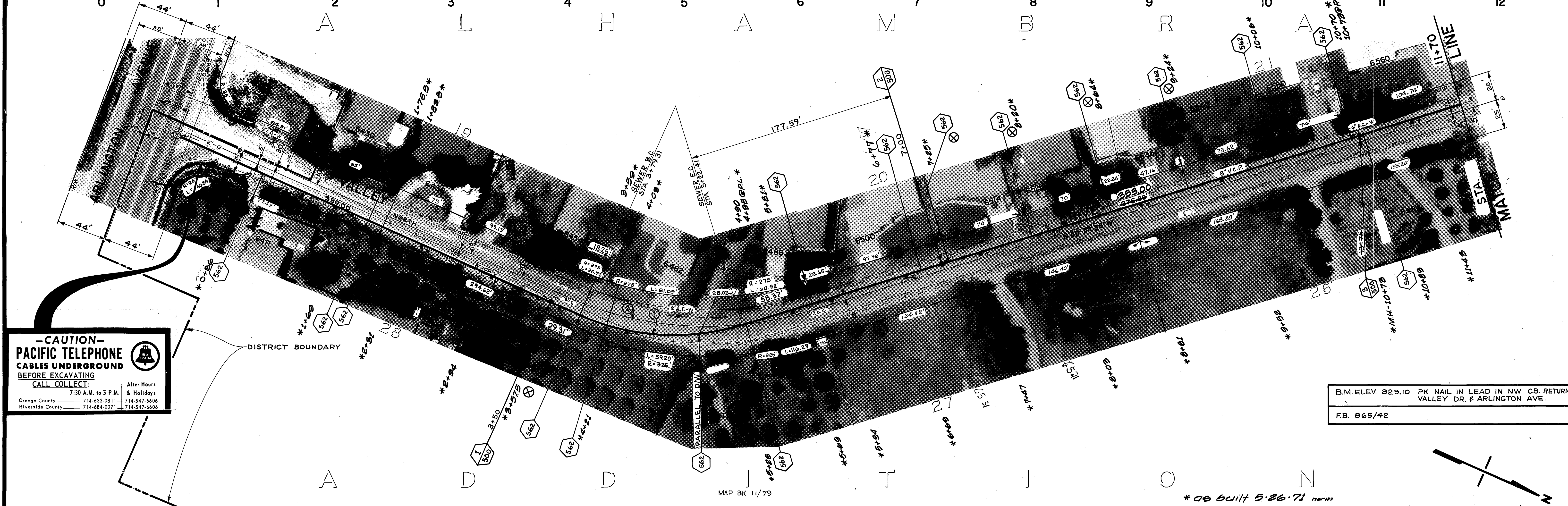
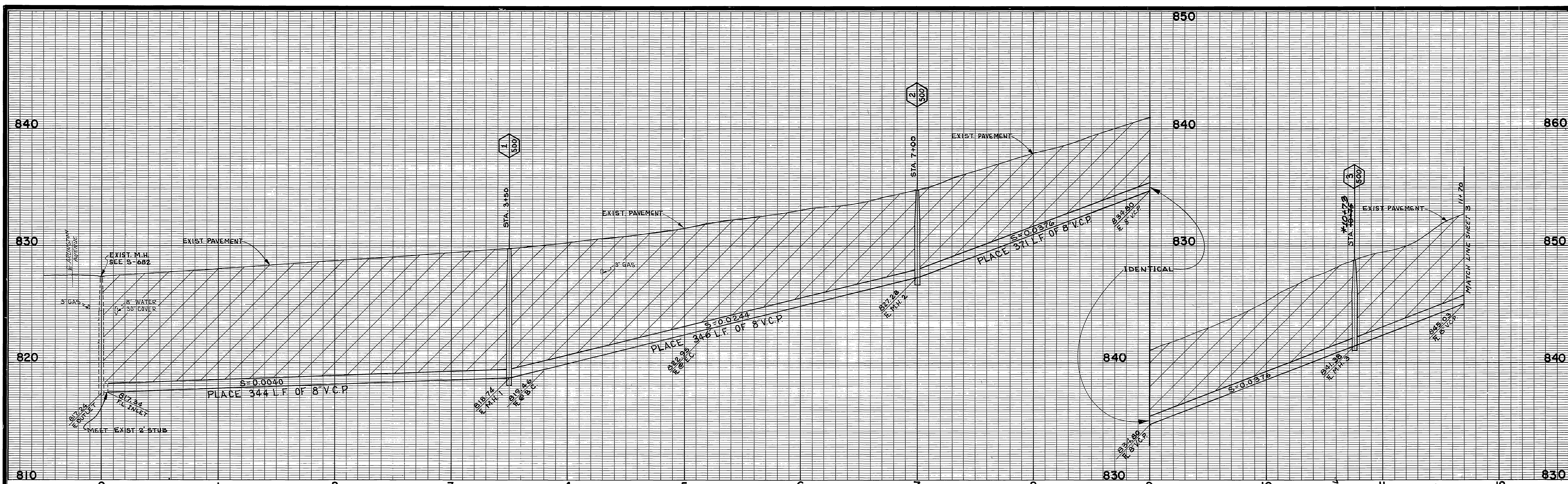
1. PIPE SHALL BE 8" V.C.P., INSTALLED PER C/R STD. 452, CASE I BEDDING, EXCEPT AS SHOWN.
2. LOCATION OF LATERALS AS NOTED;
 - (a) ⊗ NO SPECIFIC LOCATION OBTAINED - CONTACT THE PROPERTY OWNER,
 - FOR ALL OTHERS, LOCATIONS FURNISHED BY PROPERTY OWNERS ARE ON FILE AT DEPARTMENT OF PUBLIC WORKS.

PROJECT LOCATION PLAN



as built 5-26-71 - norm

| VALLEY DRIVE ASSESSMENT DISTRICT | | | |
|--|--------------------|--------------------------|----------------|
| APPROVED BY | BY DATE | APPROVED BY | ACCOUNT NO 625 |
| PRINCIPAL ENGINEER | <i>[Signature]</i> | DIRECTOR OF PUBLIC WORKS | DRAWING NUMBER |
| PARK DEPARTMENT | | | S-758 |
| TRAFFIC DIVISION | | | SHEET 1 OF 4 |
| CHIEF PUB. WKS. ENGR. | DATE | | |
| DESIGNED BY <i>[Signature]</i> DRAWN BY <i>[Signature]</i> CHECKED BY <i>[Signature]</i> | | | |

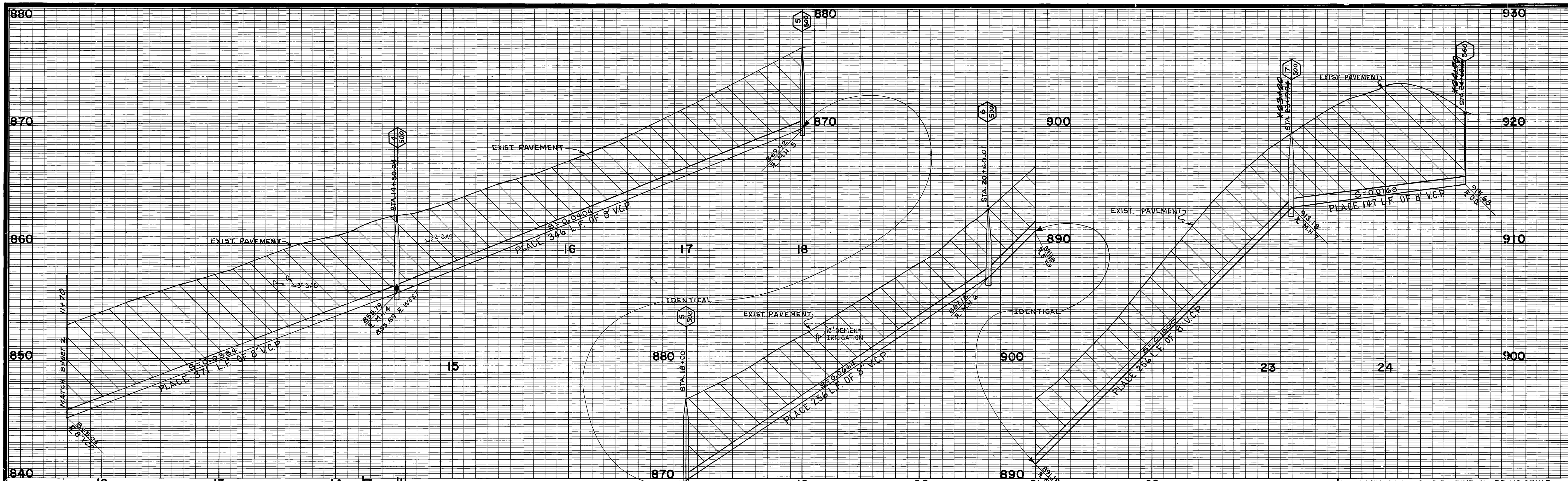


-CAUTION-
PACIFIC TELEPHONE
CABLES UNDERGROUND
BEFORE EXCAVATING
CALL COLLECT:
 Orange County 7:30 A.M. to 5 P.M. 714-633-0811
 Riverside County 714-547-6606 & Holidays 714-547-6606

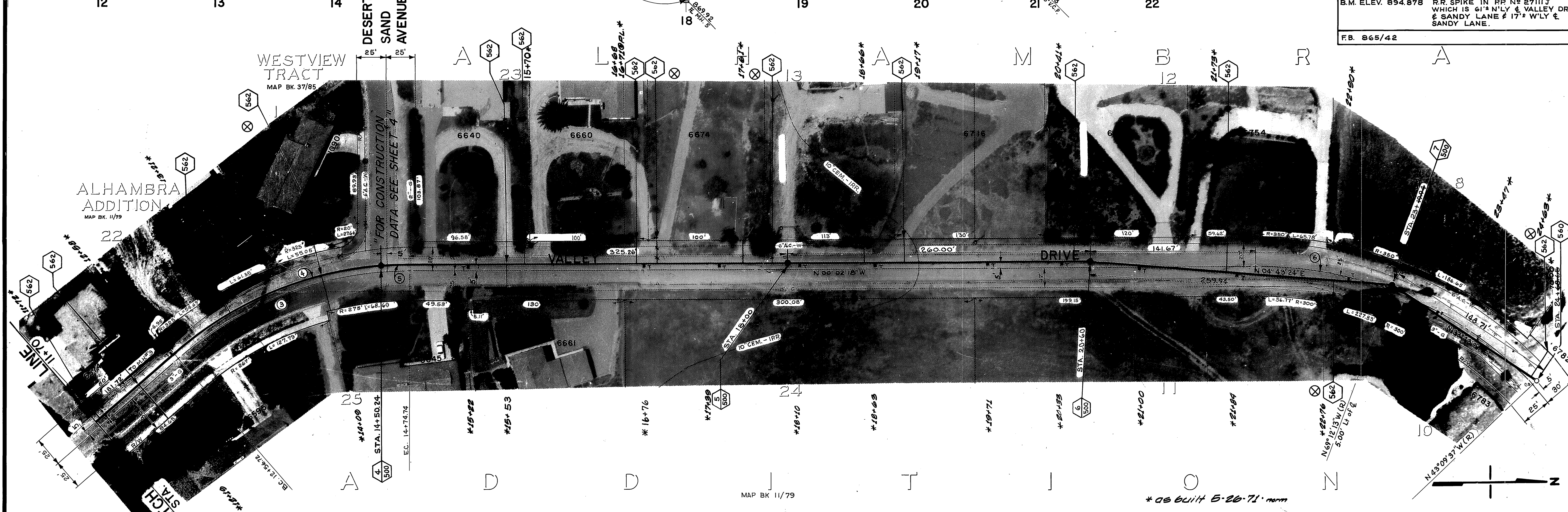
B.M. ELEV. 829.10 PK NAIL IN LEAD IN NW CB. RETURN VALLEY DR. & ARLINGTON AVE.
 FB. 865/42

| CURVE DATA | | | | |
|------------|---------|-----------|---------|---------|
| No. | R | Δ | T | L |
| ① | 200.00' | 40°59'38" | 74.76' | 143.10' |
| ② | 300.00' | 40°59'38" | 112.15' | 214.64' |

| | | | | |
|--|-----------------|---|--|--|
| CITY OF RIVERSIDE, CALIFORNIA PUBLIC WORKS DEPARTMENT | | VALLEY DRIVE ASSESSMENT DISTRICT | | ACCOUNT NO 625 DRAWING NUMBER S-758 |
| APPROVED BY PRINCIPAL ENGINEER <i>[Signature]</i> | BY DATE 4/13 | APPROVED BY DIRECTOR OF PUBLIC WORKS <i>[Signature]</i> | PLAN & PROFILE ARLINGTON TO DESERT SAND SHEET 2 OF 4 | |
| DESIGNED BY <i>[Signature]</i> DRAWN BY R.KHM. CHECKED BY <i>[Signature]</i> | | CHIEF PUB. WKS. ENGR. <i>[Signature]</i> | DATE 4/13 | HORIZ. SCALE: 1" = 40' VERT. SCALE: 1" = 4' |

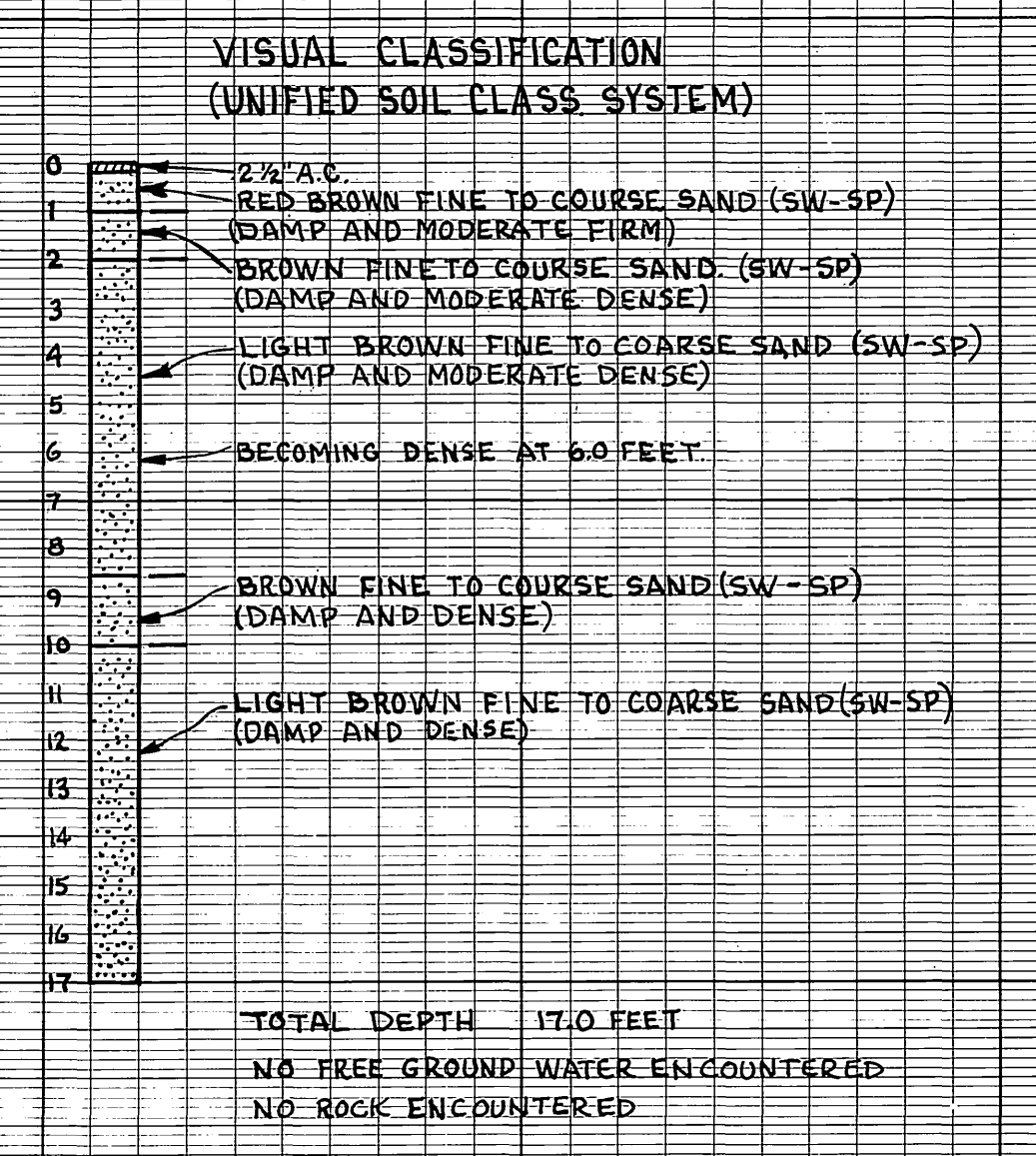
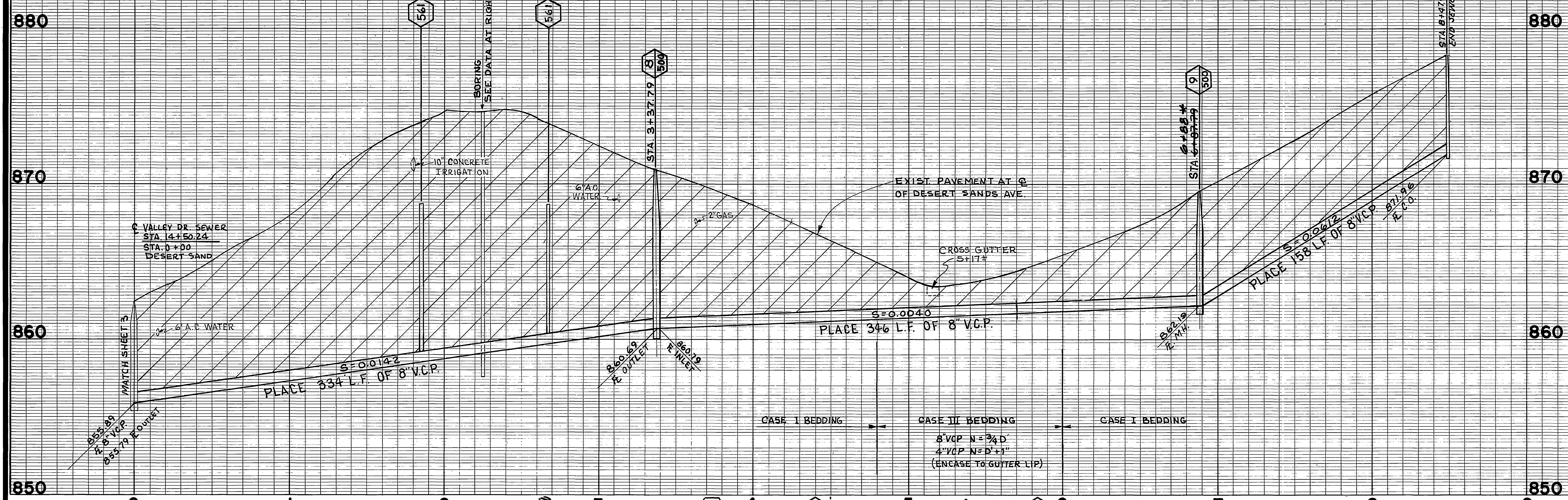


B.M. ELEV. 894.878 RR. SPIKE IN RR NS 271117 WHICH IS 61' N'LY & VALLEY DR. & SANDY LANE & 17' W'LY & SANDY LANE.
 F.B. 865/42



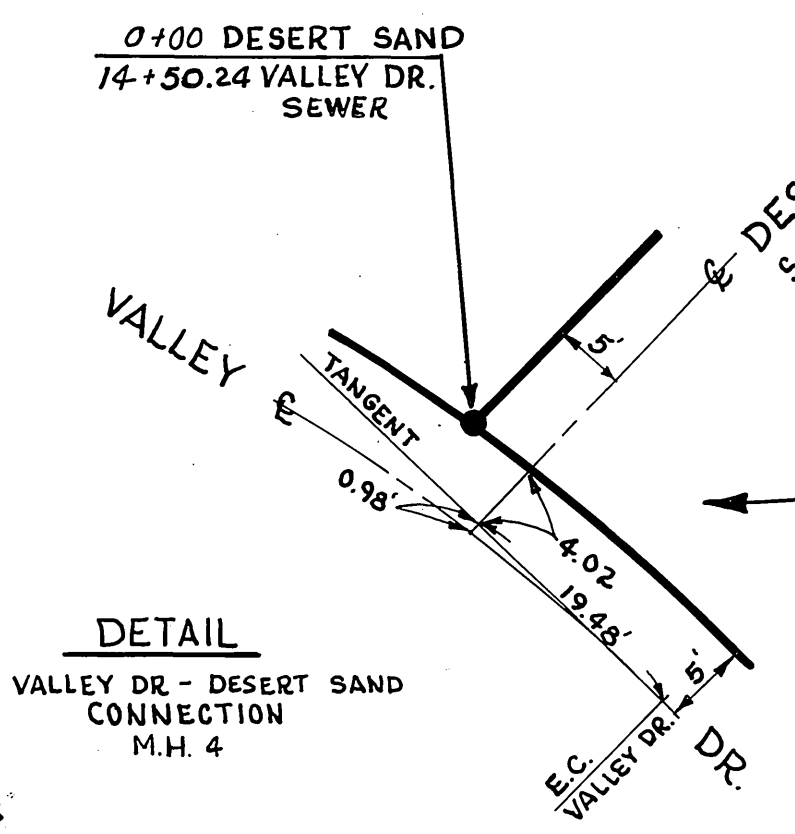
| CURVE DATA | | | | |
|------------|---------|-----------|---------|---------|
| No. | R | Δ | T | L |
| ③ | 300.00' | 40°57'20" | 112.03' | 214.44' |
| ④ | 305.00' | 36°21'10" | 100.14' | 193.52' |
| ⑤ | 305.00' | 4°36'10" | 12.26' | 24.50' |
| ⑥ | 325.00' | 54°19'23" | 166.78' | 308.19' |

| | | | | |
|--|-----------------|---|---|---|
| CITY OF RIVERSIDE, CALIFORNIA PUBLIC WORKS DEPARTMENT | | VALLEY DRIVE ASSESSMENT DISTRICT | | ACCOUNT # 625 DRAWING NUMBER S-758 |
| APPROVED BY PRINCIPAL ENGINEER <i>[Signature]</i> | BY DATE 7/13 | APPROVED BY DIRECTOR OF PUBLIC WORKS <i>[Signature]</i> | PLAN & PROFILE DESERT SAND TO SANDY LANE | |
| DESIGNED BY <i>RCW</i> , DRAWN BY <i>R.KHM</i> , CHECKED BY <i>DCM</i> | | REVISIONS DATE 7/13 | | SHEET 3 OF 4 |
| HORIZ. SCALE: 1" = 40' | | VERT. SCALE: 1" = 4' | | |



BORING DATA
2+30 DESERT SAND

B.M. ELEV. 863.13 PK NAIL IN SW CB RETURN SANDY LANE & DESERT SAND.
F.B. 865/40



| CURVE DATA | | | | |
|------------|---------|-----------|--------|---------|
| NO. | R | Δ | T | L |
| Ⓐ | 201.06' | 27°00'06" | 48.27' | 94.75' |
| Ⓑ | 206.06' | 32°30'00" | 60.06' | 116.88' |

CITY OF RIVERSIDE, CALIFORNIA
PUBLIC WORKS DEPARTMENT

APPROVED BY: [Signature]
PRINCIPAL ENGINEER
DATE: 7/13

APPROVED BY: [Signature]
DIRECTOR OF PUBLIC WORKS
DATE: 7/13

DESIGNED BY: [Signature] DRAWN BY: R. KIMM CHECKED BY: D.C.H.

ACCOUNT NO 625
DRAWING NUMBER
S-758

VALLEY DRIVE
ASSESSMENT DISTRICT

PLAN & PROFILE
DESERT SAND AVENUE

SHEET 4 OF 4

HORIZ. SCALE: 1" = 40'
VERT. SCALE: 1" = 4'

*08 built 5-20-71 norm