

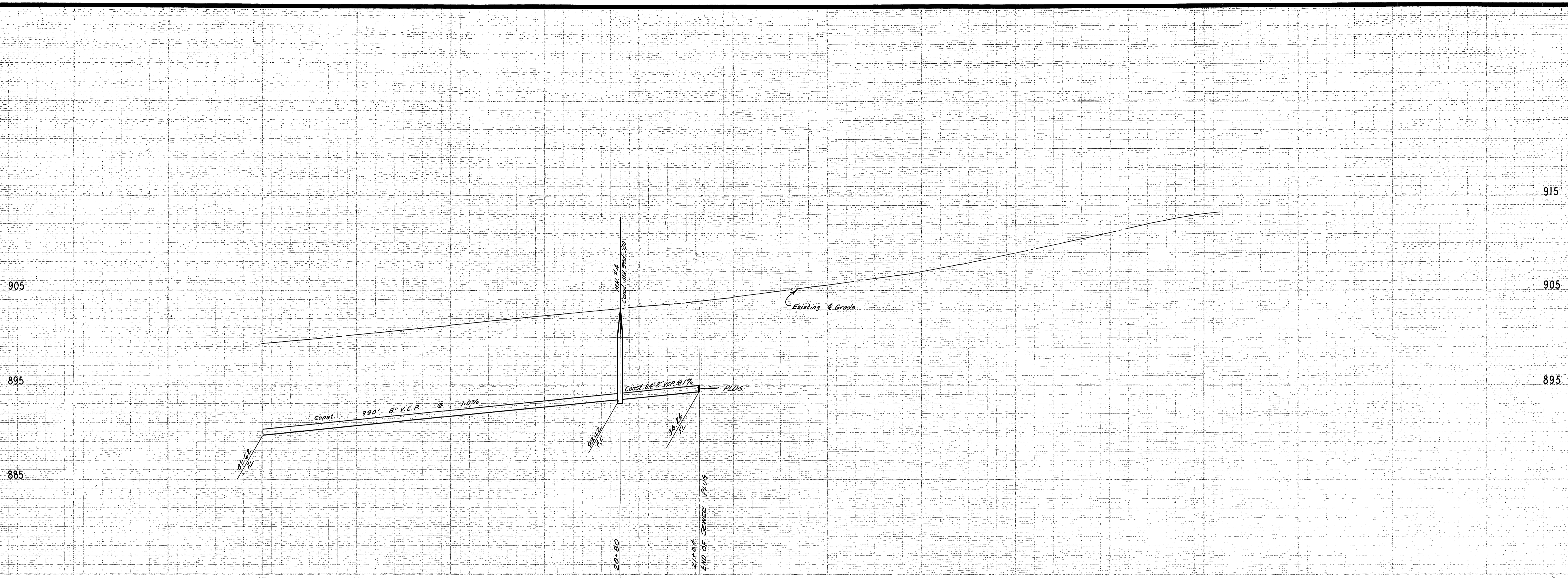
**BENCH MARK**  
 F.R. R. Spike 90' S. of Thornton St. on Chicago Ave.  
 Elev. 897.73 C.R. F.R. 682/24

**QUANTITY ESTIMATE**

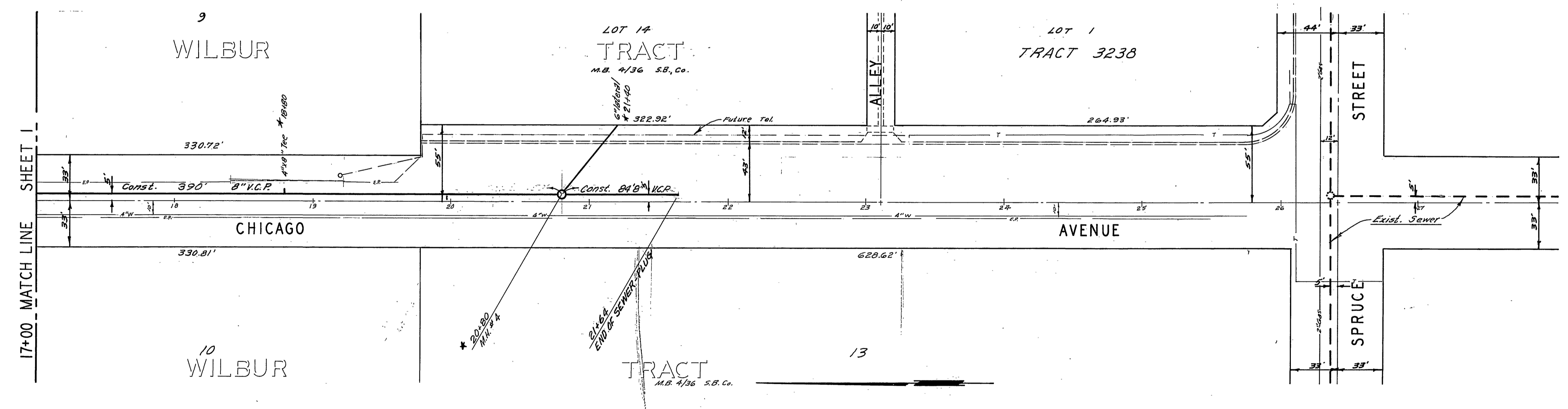
8" Vitrified Clay Pipe	1,412	L.F.
6" Vitrified Clay Pipe	30	L.F.
Manhole Standard No. 500	4	EA.
Cleanout Standard No. 600	1	EA.
6" X 8" Tee	1	EA.
Reinforced Replacement 6" X 8" Tee	4	EA.

\* As built 9/24/69 S.B.

<b>ALBERT A. WEBB ASSOCIATES</b> CIVIL ENGINEERS RIVERSIDE, CALIFORNIA APPROVED BY: <i>[Signature]</i> DATE 11/19/68 R.E. No. 3876 W.O. 68/49 FOR: E.L. Yeager Co. F.B. 589	REVISIONS 1. 11/19/68 2. 12/1/68 3. 6/23/69	<b>CITY OF RIVERSIDE, CALIFORNIA</b> DEPARTMENT OF PUBLIC WORKS APPROVED BY: <i>[Signature]</i> DATE 6-23-69 ASSISTANT CITY ENG. <i>[Signature]</i>	<b>SEWER PLAN AND PROFILE</b> <b>CHICAGO AVENUE</b> From 750' South of Marlborough Ave. to 475' North of Spruce St. HORIZ. SCALE: 1" = 50' VERT. SCALE: 1" = 5'	PROJECT NO. <b>S-761</b> SHEET 1 OF 2 FILE NO. 68-149-B
		DESIGNED BY: B.E.L. DRAWN BY: B.E.L. CHECKED BY: B.E.L.	INDEXED R.R.	



BENCH MARK:  
 Pt. RR Spike 80' S. of Thornton St. on Chicago Ave.  
 Elev. 897.73 C/R R.B. 682724



**- CAUTION -**  
**PACIFIC TELEPHONE**  
**CABLES UNDERGROUND**  
**BEFORE EXCAVATING**

CALL COLLECT:

7:30 A.M. to 5 P.M. & Holidays	After Hours
Orange County 714-633-0811	714-547-6606
Riverside County 714-684-0071	714-547-6606
Inyo County 714-684-0071	714-547-6606
San Bernardino County 714-884-0071	714-547-6606
Los Angeles County 213-621-3111	24 HOUR SERVICE
Ventura County 213-621-3111	714-232-0027
San Diego County 714-298-0595	714-232-0027

FOR FREE CABLE LOCATING SERVICE

\* As built 9/24/69 88

<b>ALBERT A. WEBB ASSOCIATES</b> CIVIL ENGINEERS RIVERSIDE, CALIFORNIA APPROVED BY <i>[Signature]</i> DATE 11/18/68 R.E. No. 9876	MARK REVISIONS APPR. DATE DESIGNED BY <i>[Signature]</i> DRAWN BY <i>[Signature]</i> CHECKED BY	CITY OF RIVERSIDE, CALIFORNIA DEPARTMENT OF PUBLIC WORKS APPROVED BY <i>[Signature]</i> DATE 6-23-69 ASSISTANT CITY ENGINEER	SEWER PLAN AND PROFILE CHICAGO AVENUE From 750' South of Meriborough Ave. to 475' North of Spruce St.	PROJECT NO. <b>S-761</b> SHEET 2 OF 2
		W.O. 68-149 FOR: E.L. Yeager Co. F.B. 589	HORIZ. SCALE: 1" = 50' VERT. SCALE: 1" = 5'	FILE NO. 68-149-B