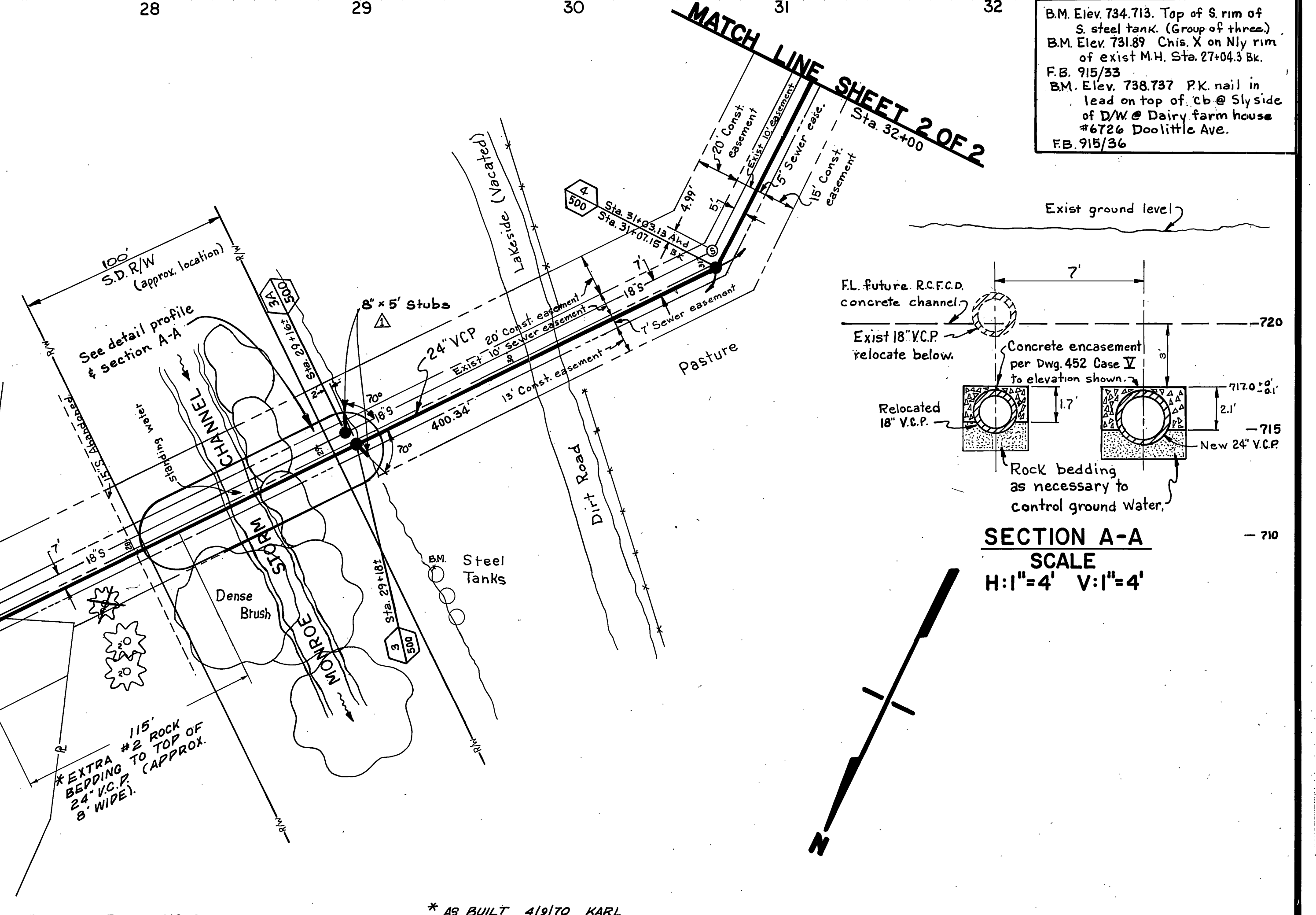
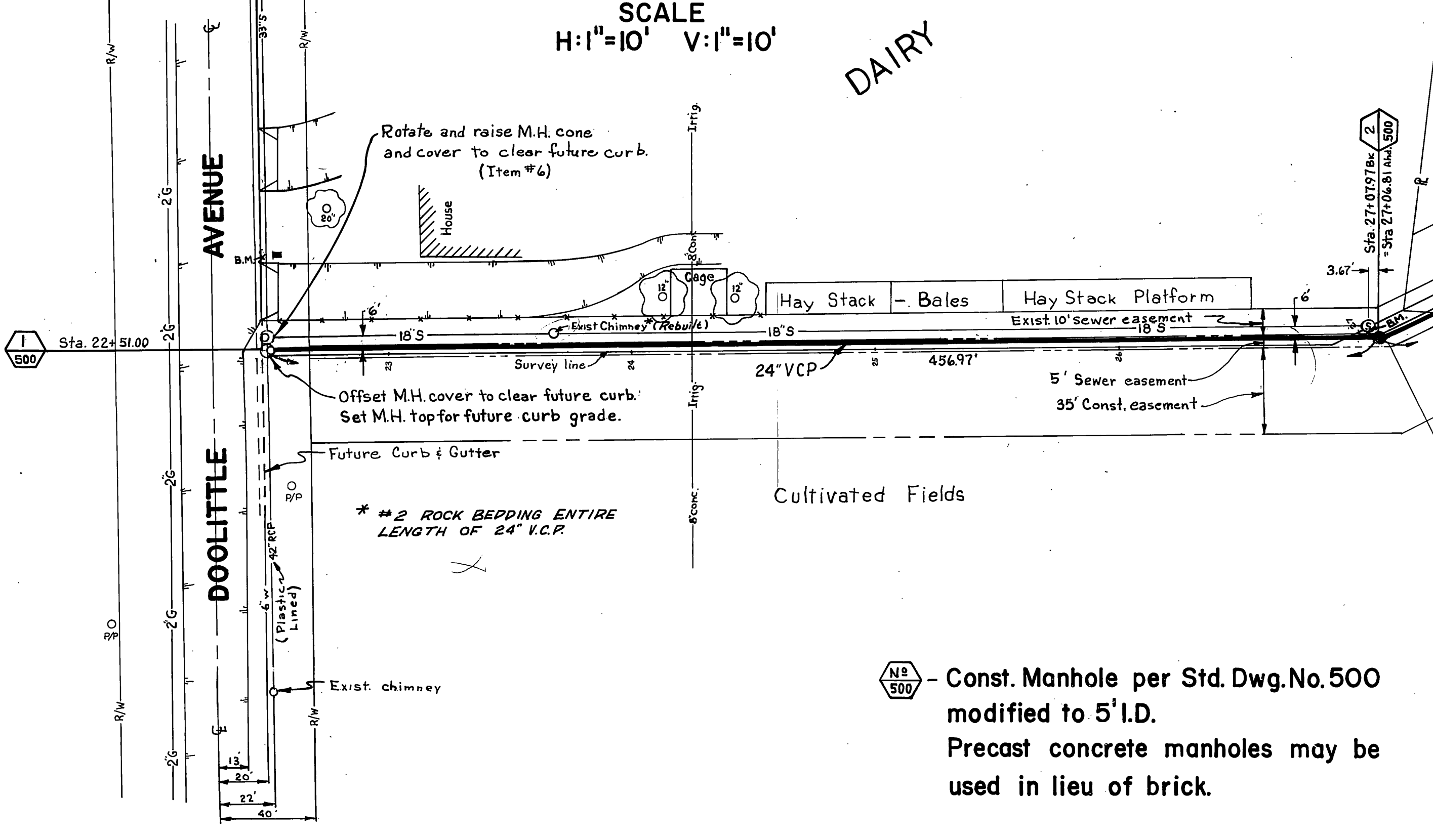


DETAIL PROFILE
SCALE
H: 1"=10' V: 1"=10'



SECTION A-A
SCALE
H: 1"=4' V: 1"=4'

B.M. Elev. 734.713. Top of S. rim of S. steel tank. (Group of three).
B.M. Elev. 731.89 Chis. X on Nly rim of exist M.H. Sta. 27+04.3 Bk.
F.B. 915/33
B.M. Elev. 738.737 P.K. nail in lead on top of cb @ Sly side of D/W @ Dairy farm house #472 @ Doolittle Ave.
F.B. 915/36

500 - Const. Manhole per Std. Dwg. No. 500 modified to 5' I.D.
Precast concrete manholes may be used in lieu of brick.

Reference Plan S-613 Shts 11-13

MARK	REVISIONS	APPR.	DATE

DESIGNED BY DCH DRAWN BY R. KUM. CHECKED BY DCH

CITY OF RIVERSIDE, CALIFORNIA
DEPARTMENT OF PUBLIC WORKS

APPROVED BY: [Signature]
DATE: 10-11-69

APPROVED BY: [Signature]
DATE: 10-11-69

INDEXED SLD
PROJECT NO. 546

ARLANZA LINE "B"
SEWER RELIEF

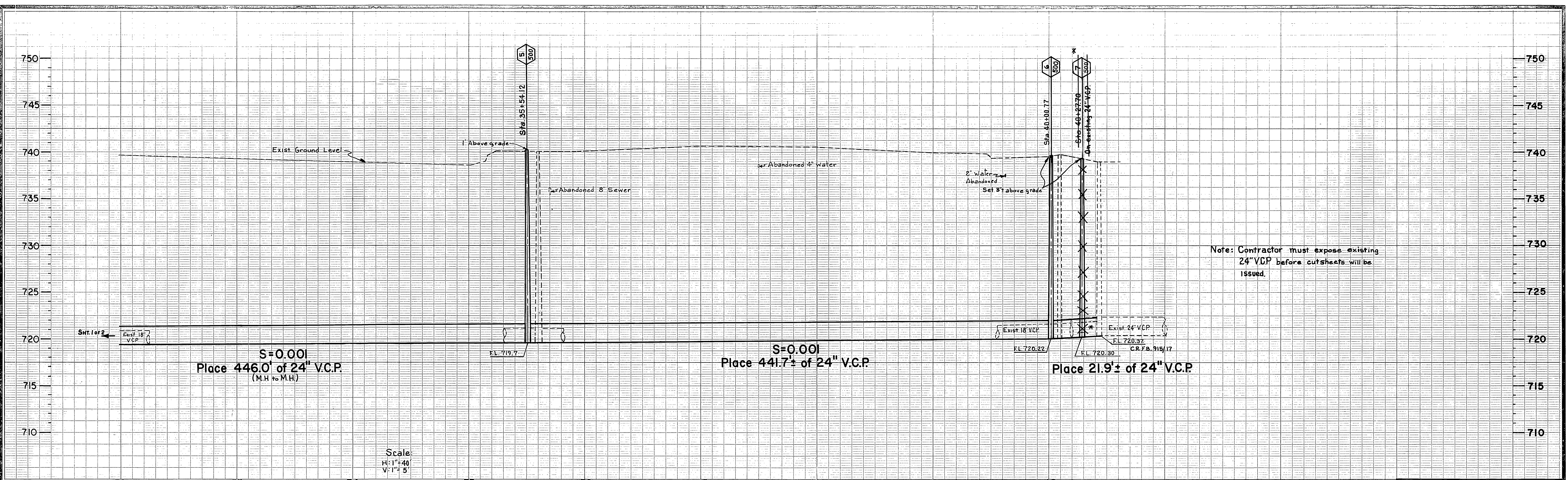
PLAN AND PROFILE
DOOLITTLE AVE TO LAKESIDE

S-766

SHEET 1 OF 2

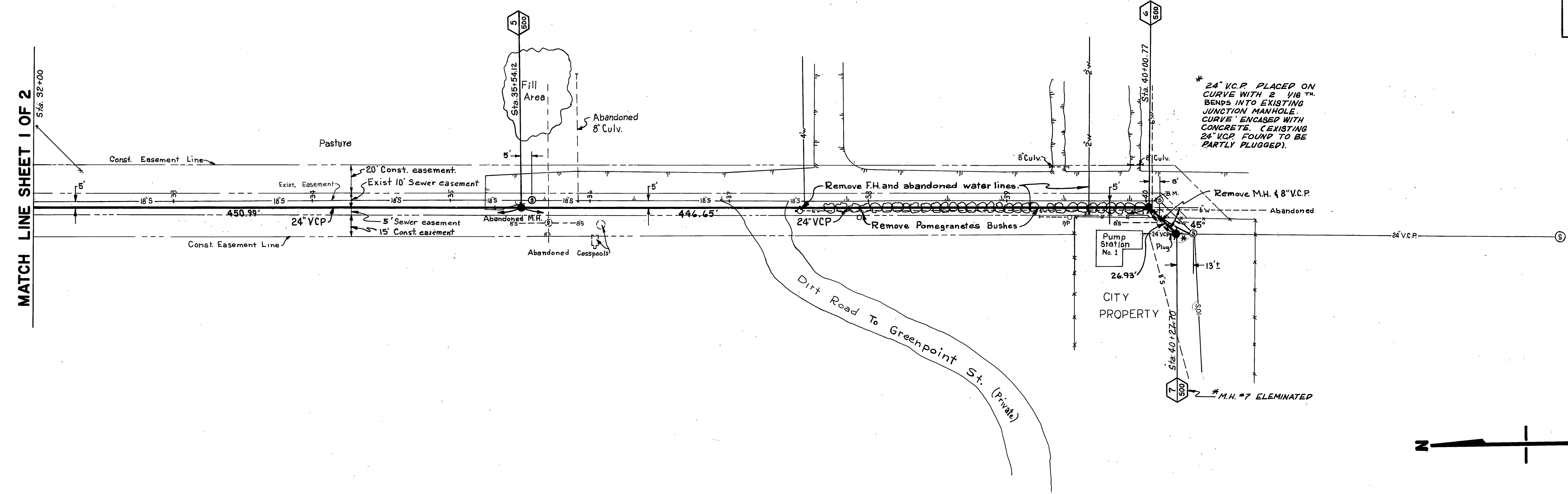
HORIZ. SCALE: 1"=40' VERT. SCALE: 1"=5'

FILE NO.



Note: Contractor must expose existing 24" VCP before cut sheets will be issued.

B.M. Elev. 734.06 On rim of M.H. #79, first M.H. next to Arlington Ave. Ref. plan S-613 sht 12 of 15.
 F.B. 915/5
 B.M. Elev. 739.69 Chis. X on Nly side exist M.H. ring sta. 40+08.77
 F.B. 915/33



* 24" V.C.P. PLACED ON CURVE WITH 2 1/8" TH. BENDS INTO EXISTING JUNCTION MANHOLE. CURVE ENCASED WITH CONCRETE. (EXISTING 24" VCP FOUND TO BE PARTLY PLUGGED).

* M.H. #7 ELEMENATED



Reference Plan S-613 Shts. 11-13

* AS BUILT 4/9/70 KARL

CITY OF RIVERSIDE, CALIFORNIA DEPARTMENT OF PUBLIC WORKS		ARLANZA LINE "B" SEWER RELIEF		INDEXED ELD PROJECT NO. 546
APPROVED BY OFFICE ENGINEER PARK DEPARTMENT TRAFFIC DIVISION ASSISTANT CITY ENG.	BY DATE 10/15/69	APPROVED BY DIRECTOR OF PUBLIC WORKS	PLAN AND PROFILE FROM LAKESIDE TO GREENPOINT PUMP STATION.	S-766 SHEET 2 OF 2
DESIGNED BY DCH DRAWN BY V. K... CHECKED BY DCH	DATE 10-15-69	DATE 10-15-69	HORIZ. SCALE: 1" = 40' VERT. SCALE: 1" = 5'	FILE NO.