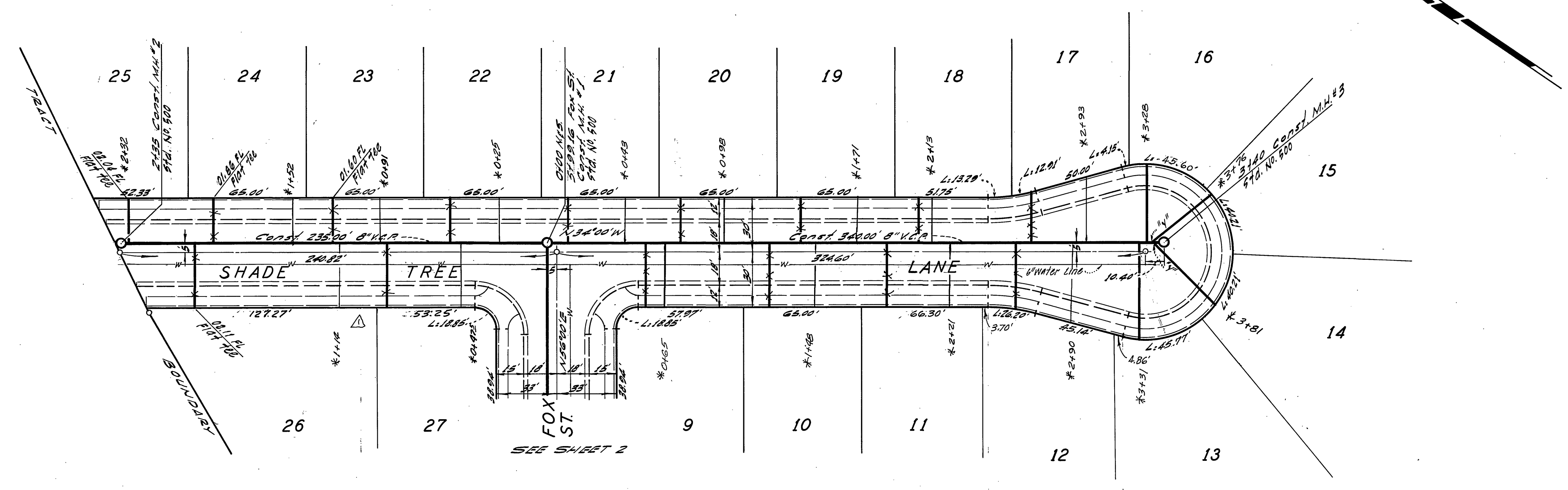


BEUCH MARK. RE. rail in lead in curb on
S 1/4 side of Fox St. 6' W of B.C.P. at
Harrison St. Elev. 808.905 G.R. PLAN NO. R-719.

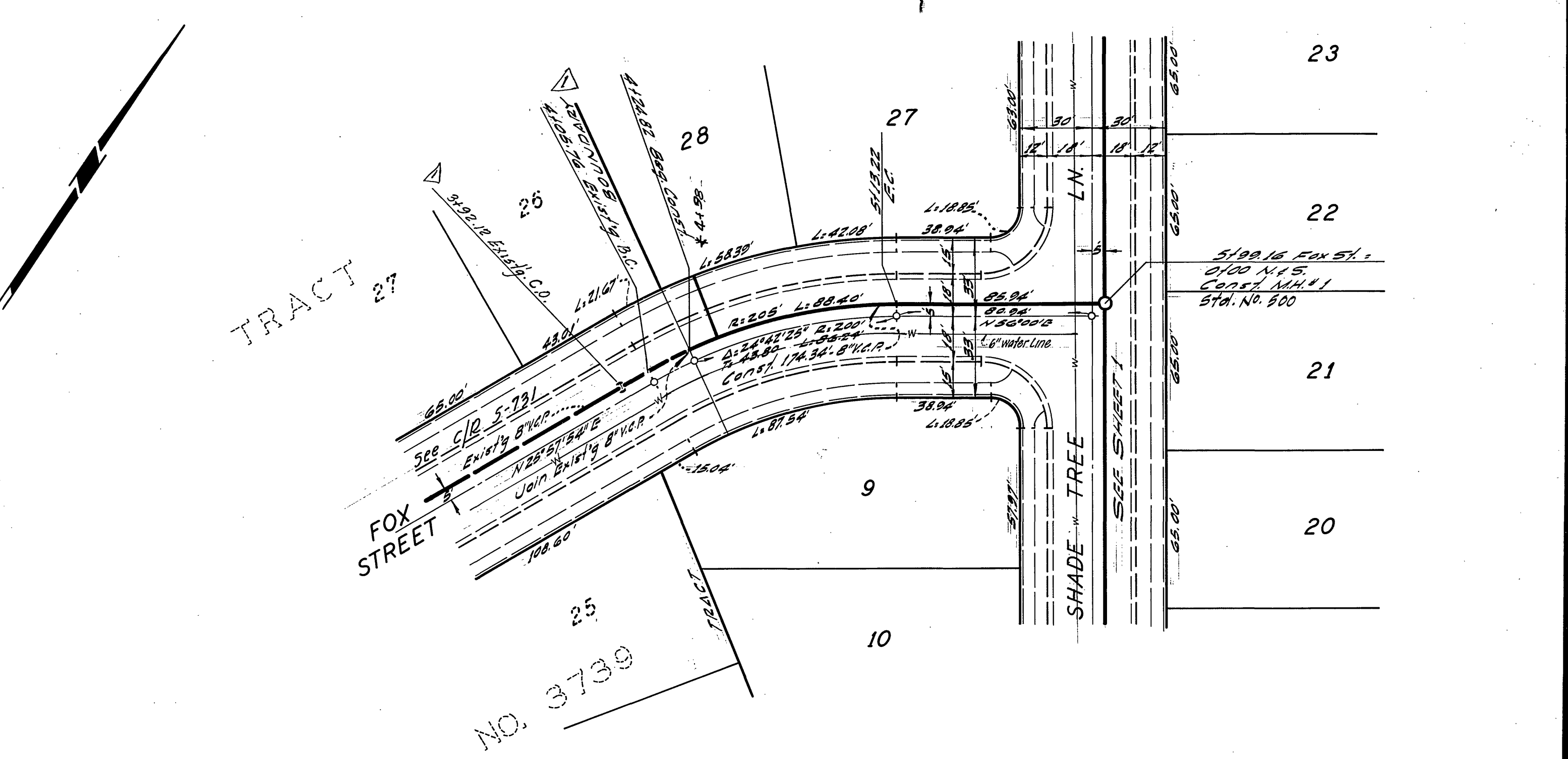
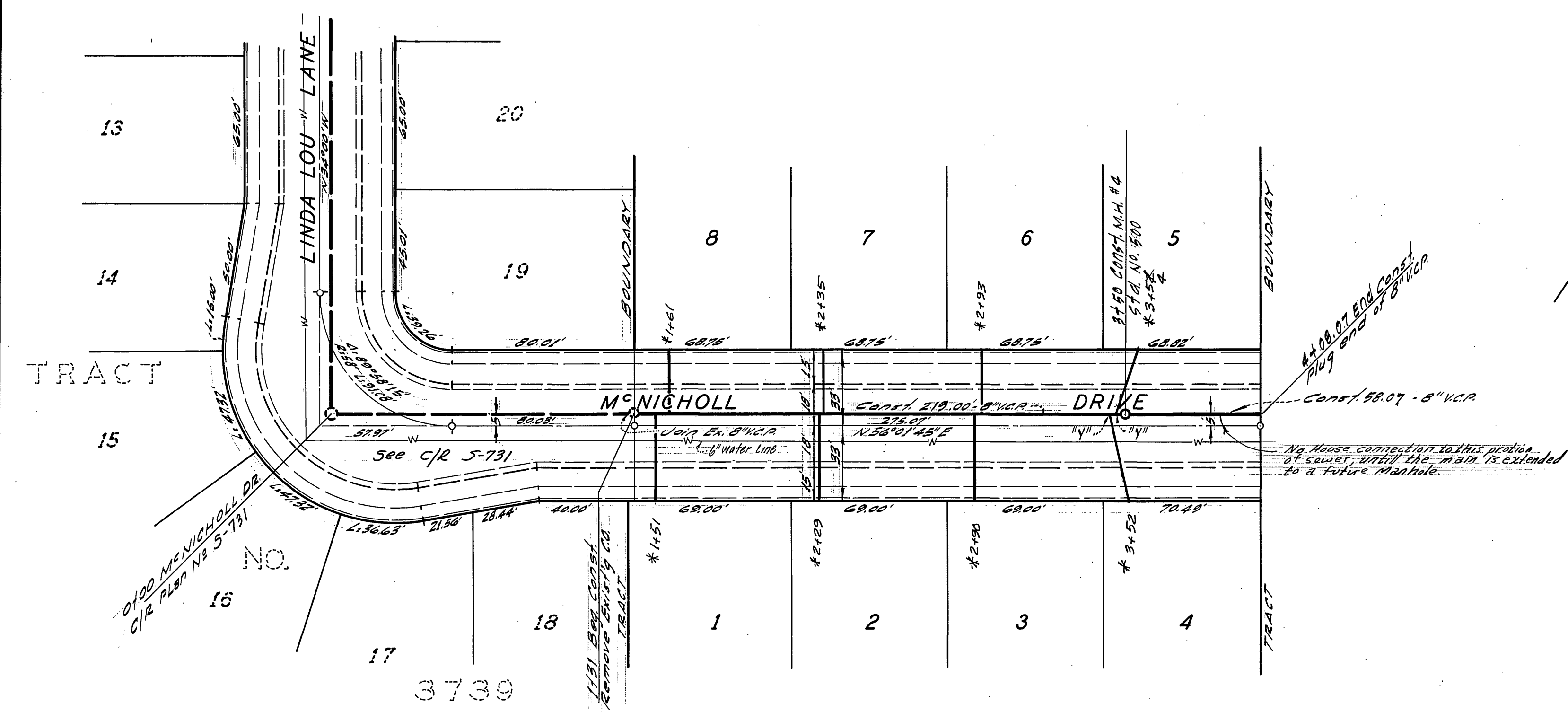
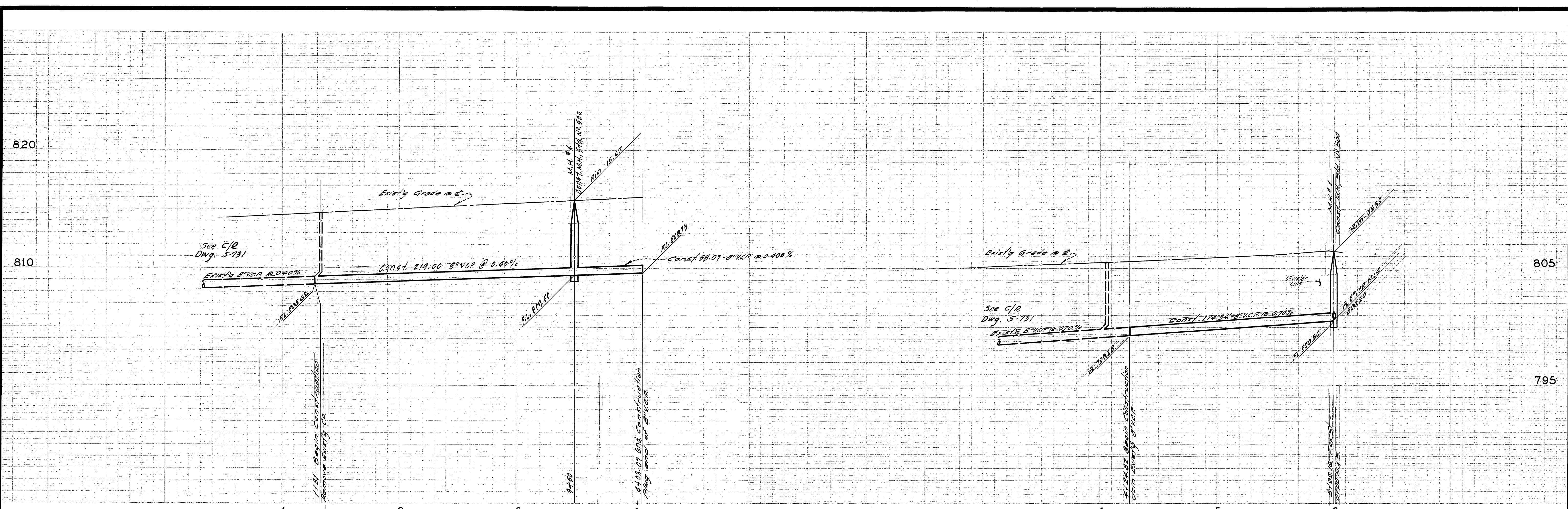


- GENERAL NOTES
- Construction shall be in accordance with the City of Riverside, Department of Public Works, Standard Specifications No. 461 and Standard Drawings.
 - It shall be the responsibility of the contractor to clear the right of way in accordance with the provisions of the law as to all affects each utility including irrigation lines and appurtenances and at no cost to the City.
 - JOINTS SHALL BE IN CONFORMANCE TO A.S.T.M. SPECIFICATIONS C-425-64 TYPE 3 OR 3E OR TO A.S.T.M. SPECIFICATIONS C-594-64T (RAND SEAL) WITH CERTAIN EXCEPTIONS OR MODIFICATIONS SPECIFIED WITH CITY ENGINEER.
 - Pipe shall be bedded per Case II, Standard Drawing No. 452, unless otherwise specified on plan.
 - Location of trees and laterals to be determined in the field by the owner or his representative.
 - All stubs and laterals to be constructed in accordance with Standard Drawing No. 552. Stubs shall be 2' LONG, PLUGGED AND CAPPED.
 - Manhole frames and covers to be set to existing or proposed PAVEMENT GRADES.
 - Laterals are to be 4" and extended to property line.
 - Prior to construction of sewer, Contractor is to expose existing sewer and contact Engineer for verification of existing elevations.

QUANTITY ESTIMATE
 Manholes, 5th. N^o 500 — 4 EA
 8" V.C.P. Sewer — 1027' L.F.
 4" V.C.P. Sewer Laterals — 938' L.F.
 8" x 4" Tees, WYCA — 28 EA

* As Built 10/3/69 B.B.

APPROVED BY <i>[Signature]</i> OFFICE ENGINEER R.E. No. 9876 DATE 3/29/69		CITY OF RIVERSIDE, CALIFORNIA DEPARTMENT OF PUBLIC WORKS		SEWER PLAN AND PROFILE SHADE TREE LANE TRACT N ^o 3699		PROJECT NO. S-768 SHEET 1 OF 2	
DESIGNED BY DRAWN BY CHECKED BY		REVISIONS APPR. DATE		APPROVED BY <i>[Signature]</i> DIRECTOR OF PUBLIC WORKS DATE 8-19-69		HORIZ. SCALE: 1" = 40' VERT. SCALE: 1" = 4' FILE NO. 67-316-B	



* As built 10/31/69 B.B.

BENCH MARK: Pt. nail in lead in curb on S 1/4 side of Fox St. 6' W of B.C.R. of Harrison St. Elev. 803.905
 C/R PLAN NO. R-719

CITY OF RIVERSIDE, CALIFORNIA DEPARTMENT OF PUBLIC WORKS		SEWER PLAN AND PROFILE M ^C NICHOLL DR. & FOX ST. TRACT NO 3699		PROJECT NO. S-768
APPROVED BY: <i>[Signature]</i> DATE: 3/29/69 OFFICE ENGINEER R.E. No. 9876		APPROVED BY: <i>[Signature]</i> PARK DEPARTMENT TRAFFIC DIVISION ASSISTANT CITY ENG.		SHEET 2 OF 2 FILE NO. 67-316-B
W.O. 67-316 FOR: WOODHAVEN DEV.		F.B. 1002		HORIZ. SCALE: 1" = 40' VERT. SCALE: 1" = 4'