

MARY

STREET

PREPARED IN THE OFFICE OF:
MILLET-KING AND ASSOCIATES
511 SO. BROOKHURST ROAD, FULLERTON
TR. 1-3440

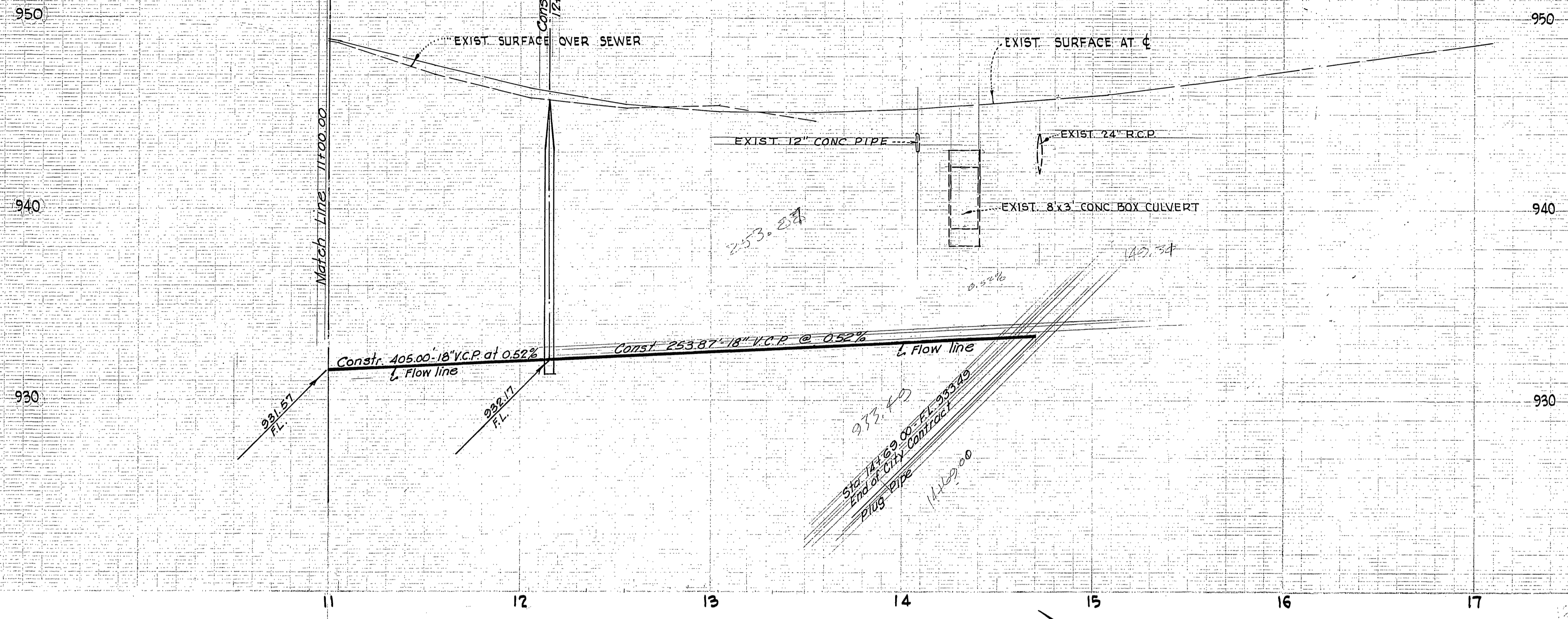
BY: *Thomas A. King* 2/13/60
THOMAS A. KING R.C.E. 16916

MARK	REVISIONS	APPR.	DATE

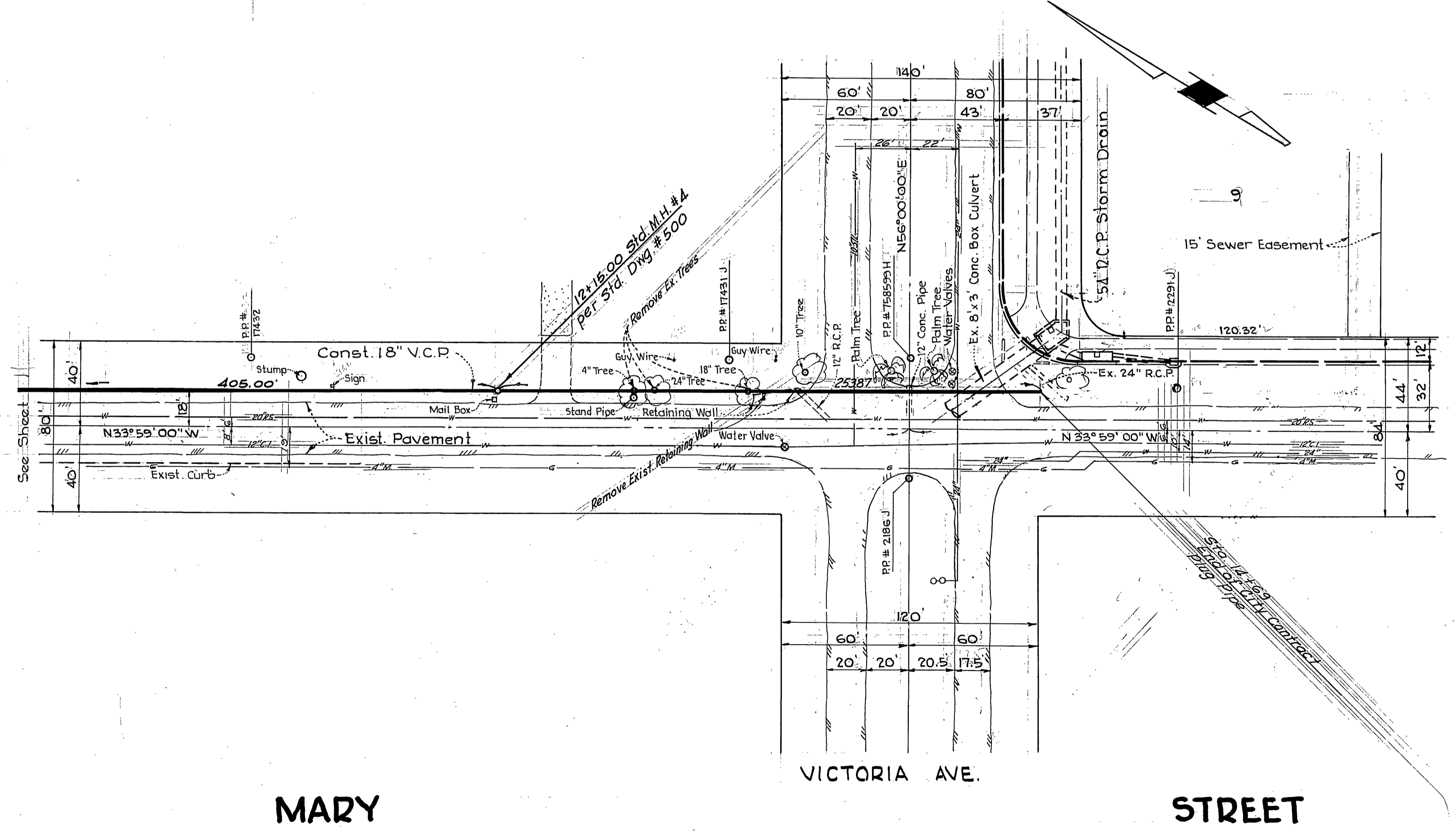
DESIGNED BY CITY DRAWN BY M.K.K. CHECKED BY 66

CITY OF RIVERSIDE, CALIFORNIA DEPARTMENT OF PUBLIC WORKS			
APPROVED BY	BY	DATE	APPROVED BY
OFFICE ENGINEER			DIRECTOR OF PUBLIC WORKS
PARK DEPARTMENT			
TRAFFIC DIVISION			
ASSISTANT CITY ENG.			
			DATE

NOT APPROVED OR BUILT		INDEXED 3.1
SEWER PLAN AND PROFILE		PROJECT NO.
MARY STREET		S-770
SEWER EXTENSION		SHEET 1 OF 2
BETWEEN LINCOLN AVENUE & VICTORIA AVENUE		FILE NO.
HORIZ. SCALE: 1" = 40'	VERT. SCALE: 1" = 4'	



BENCH MARK
 Chis. x on top of bolt of fire hydrant
 at intersection of Mary & Victoria (680/15)
 ELEV. 946.765



MARY

VICTORIA AVE.

STREET

NOT APPROVED OR BUILT

PREPARED IN THE OFFICE OF:
 MILLET, KING AND ASSOCIATES
 511 SO. BROOKHURST RD., FULLERTON
 TR-1-3440

BY: *Thomas A. King* 2/13/60
 THOMAS A. KING R.C.E. 16916

MARK	REVISIONS	APPR.	DATE

DESIGNED BY A.B. DRAWN BY L.M. CHECKED BY *AK*

CITY OF RIVERSIDE, CALIFORNIA
 DEPARTMENT OF PUBLIC WORKS

APPROVED BY	BY	DATE	APPROVED BY
OFFICE ENGINEER	<i>AK</i>	<i>2/13/60</i>	DIRECTOR OF PUBLIC WORKS
PARK DEPARTMENT			
TRAFFIC DIVISION			
ASSISTANT CITY ENG.			

DATE

SEWER PLAN AND PROFILE
**MARY STREET
 SEWER EXTENSION**
 BETWEEN LINCOLN AVENUE &
 VICTORIA AVENUE

HORIZ. SCALE: 1" = 40' VERT. SCALE: 1" = 4'

PROJECT NO.
S-770

SHEET **2** OF **2**

FILE NO.