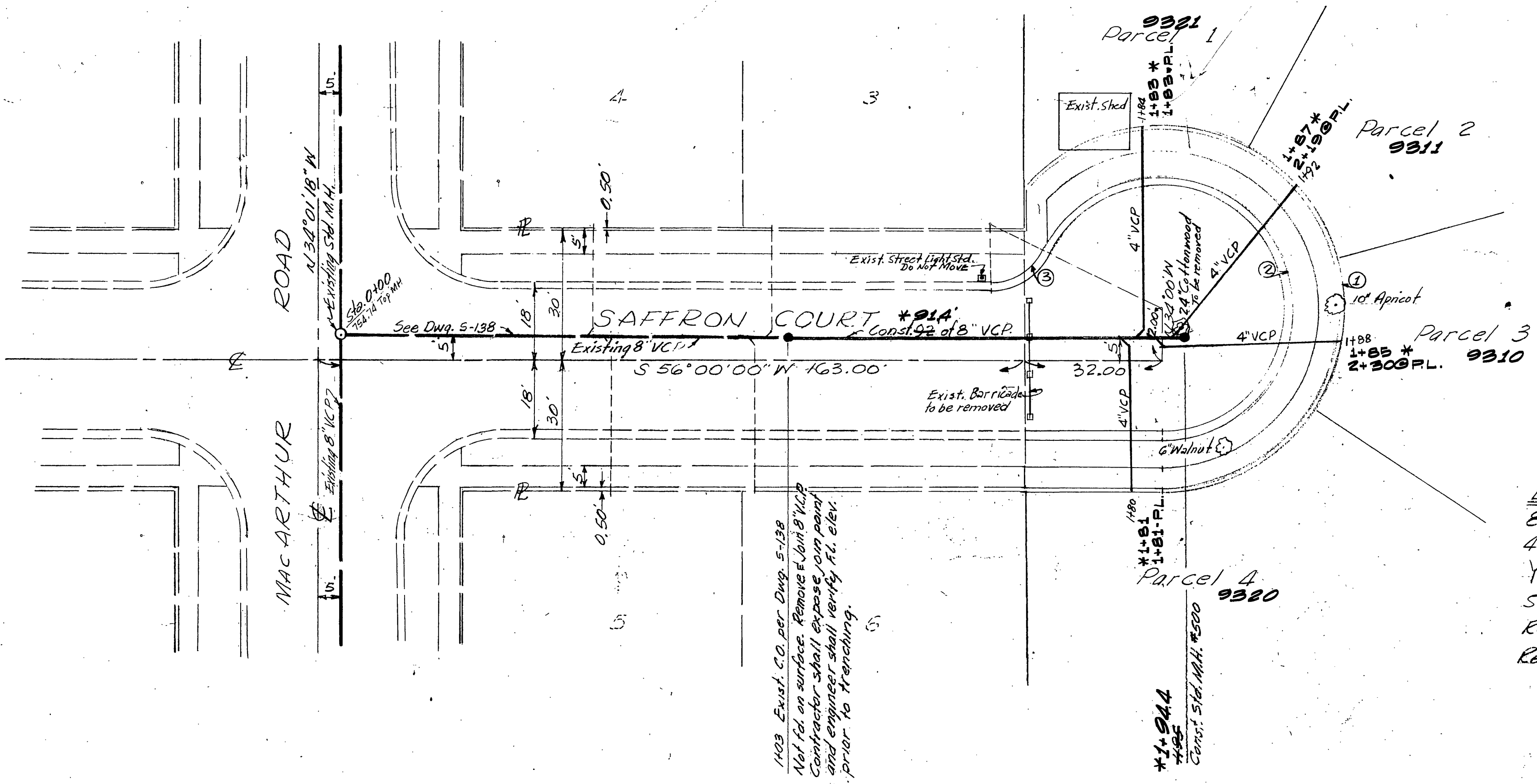


CURVE DATA:

No.	R	Δ	L	T	Ch.
①	42'	229°39'50"	168.35'	—	—
②	30'	242°10'55"	126.81'	—	—
③	15'	62°10'55"	16.28'	9.05'	15.49'

GENERAL NOTES

1. ALL MANHOLES TO BE RIVERSIDE CITY STANDARD NO. 500 UNLESS OTHERWISE NOTED ON PLAN. MAXIMUM VERTICAL SPACING OF STEPS IN ALL MANHOLES SHALL BE 12".
2. ALL CONSTRUCTION SHALL BE IN ACCORDANCE WITH THE STANDARDS AND SPECIFICATIONS NO. 44 OF THE CITY OF RIVERSIDE DEPARTMENT OF PUBLIC WORKS. PIPE SHALL BE BEDDED PER CASE I, STANDARD DRAWING NO. 452.
3. IT SHALL BE THE RESPONSIBILITY OF THE CONTRACTOR TO CLEAR THE RIGHT OF WAY IN ACCORDANCE WITH THE PROVISIONS OF LAW AS IT AFFECTS EACH UTILITY INCLUDING IRRIGATION LINES AND APPURTENANCES, AND AT NO COST TO THE CITY OF RIVERSIDE.
4. JOINTS SHALL BE IN CONFORMANCE TO ASTM SPECIFICATIONS C-425-64, TYPE I OR III OR TO ASTM SPECIFICATIONS C-594-66T (BAND SEAL) WITH CERTAIN EXCEPTIONS OR MODIFICATIONS ON FILE WITH THE CITY ENGINEER.
5. LOCATION OF ALL TEES, AND LATERALS TO BE LOCATED IN THE FIELD. NOTE APPROXIMATE STATIONING ON PLAN.
6. ALL STUBS AND LATERALS TO BE CONSTRUCTED IN ACCORDANCE WITH STD. DWG. NO. 562. STUBS SHALL BE PLUGGED AND CAPPED.
7. MANHOLE FRAMES AND COVERS TO BE SET TO PROPOSED PAVEMENT GRADES.
8. LATERALS SHALL BE 4" V.C.P. AND EXTENDED TO PROPERTY LINE.
9. PRIOR TO CONSTRUCTION OF SEWER, CONTRACTOR IS TO EXPOSE EXISTING SEWER AND CONTACT ENGINEER FOR VERIFICATION OF EXISTING ELEVATIONS.



ESTIMATE OF QUANTITIES

8" V.C. Pipe	92 LF
4" V.C. Pipe	176 LF
Y's.	4 Ea.
Std. M.H. (Std. #500)	1 Ea.
Remove Exist. Barricade	1 Ea.
Remove 24" Cottonwood	1 Ea.

1403 Exist. C.O. per Dwg. S-138
 Not for on surface. Remove & Join 8" V.C.P.
 Contractor shall expose joint point
 and engineer shall verify H. elev.
 prior to trenching.

1+944
 1+945
 Const. Std. M.H. #500

* as built @ 21-71 norm

Riv. City
 BENCH MARKS E.B. 525/161
 P.K. NAIL IN S.E. COR. CALIF.
 2' WEST OF S.W. COR. BETWEEN
 KING BURY & CALIFORNIA E.L. 75082

CRAWLEY, HAWKINS & ASSOCIATES
 ENGINEERS AND SURVEYORS
 RIVERSIDE 924-3522

APPROVED *George O. Crawley* 9-15-69
 REG. CIVIL ENGINEER No. 9455

FOR: Rose R. Pearson

MARK	REVISIONS	APPR. DATE

DESIGNED BY: DRAWN BY: CHECKED BY: *[Signature]*

CITY OF RIVERSIDE, CALIFORNIA
 DEPARTMENT OF PUBLIC WORKS

APPROVED BY: *[Signature]* DATE: 10/24/69
 OFFICE ENGINEER
 PARK DEPARTMENT: *[Signature]* DIRECTOR OF PUBLIC WORKS
 TRAFFIC DIVISION
 ASSISTANT CITY ENGINEER: *[Signature]* DATE: 10/24/69

SEWER PLAN AND PROFILE
 SAFFRON COURT
 103'-195' N.E. LY OF MAC ARTHUR ROAD
 R.S. 1065

PROJECT NO. 112-7128
 SHEET 1 OF 1
 FILE NO. 4162